

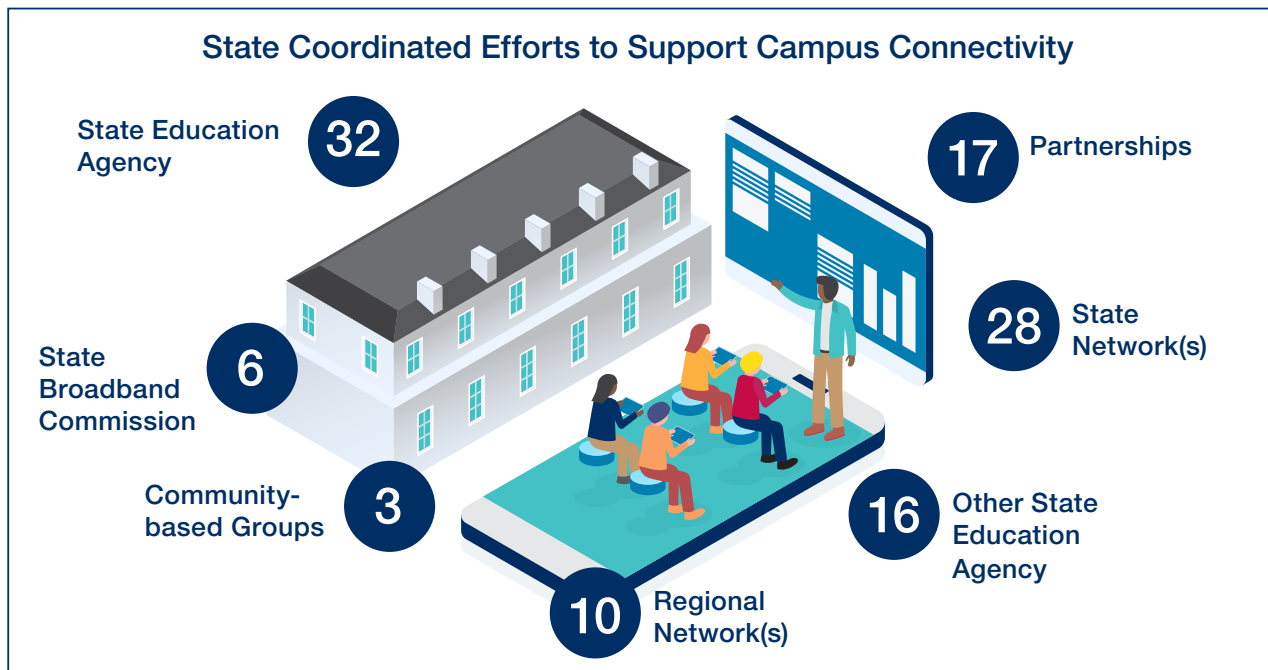


# State K-12 Broadband Leadership 2019: Driving Connectivity, Access and Student Success

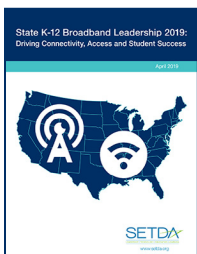
SETDA

LEADERSHIP • TECHNOLOGY • INNOVATION • LEARNING

SETDA's [State K-12 Broadband Leadership 2019: Driving Connectivity, Access and Student Success](#) highlights the importance of state leadership and the various ways states strive to support districts and schools to achieve equitable broadband access both on and off campus to provide digital learning opportunities for all students. No one state has the same policies or practices as multiple considerations including geography, state education agency practices and state procurement laws all impact decisions regarding broadband support and implementation. Some states (28) have implemented a statewide network, while other states solicit different state agencies to collaborate with each other *and* partner with non-profit organizations. Other states collaborate with various state agencies, regional organizations, community-based groups, or external organizations. Regardless of the approach, the overall goal is to expand high-quality connectivity to all K-12 public schools to provide robust access for students to further teaching and learning.



States indicated the types of efforts to support on campus connectivity. For details regarding each state visit the [State K-12 Education Online Broadband Map](#).



## FULL REPORT

Dig into the full report to learn about a variety of state examples of broadband state leadership, policy and practice considerations and district examples.

<https://www.setda.org/priorities/equity-of-access/statek12broadbandleadership2019/>

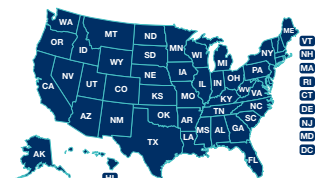
<https://www.setda.org/priorities/equity-of-access/statek12broadbandleadership2019/>

## STATE K-12 EDUCATION ONLINE BROADBAND MAP

The [State K-12 Education Online Broadband Map](#) includes highlights from each states K-12 broadband approach, identifies which states have statewide

networks, regional networks and statewide purchasing consortia and state funding models.

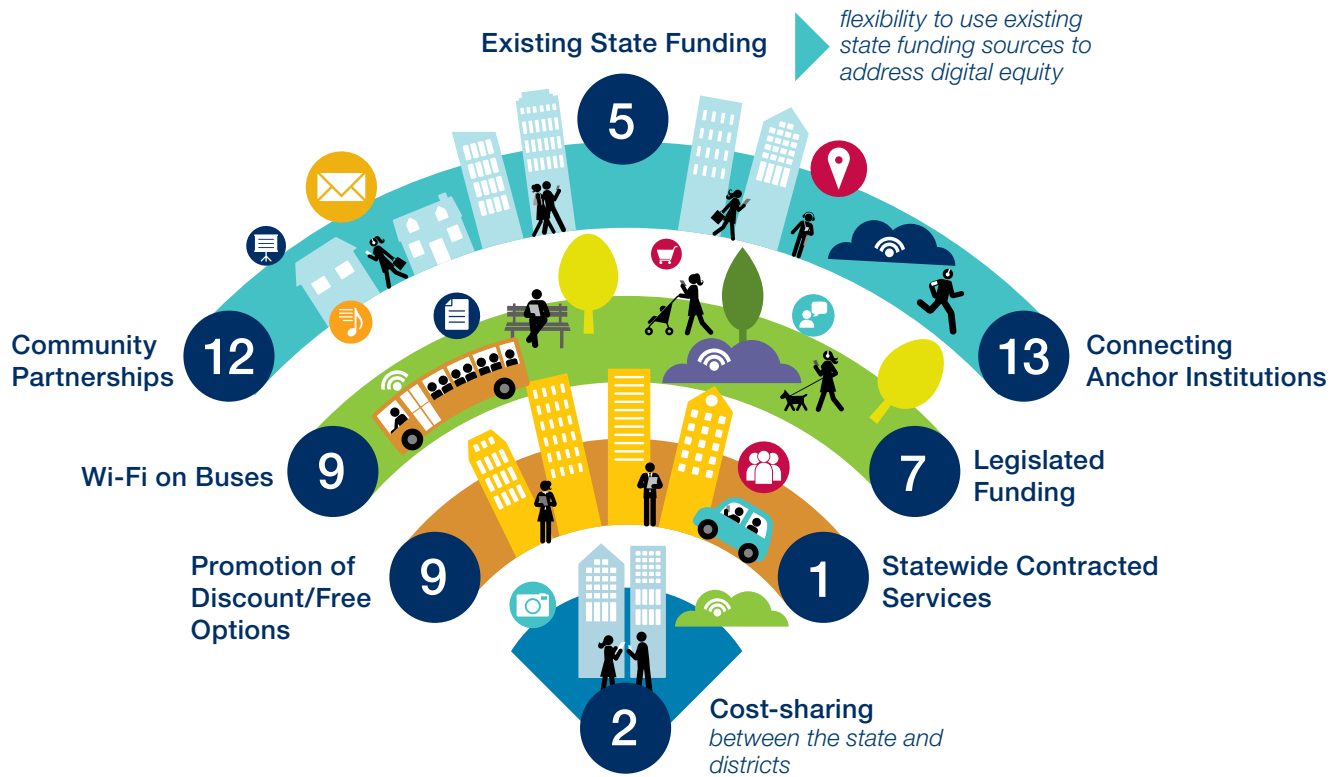
<http://arcg.is/setdabroadbandmap>



## OFF CAMPUS ACCESS

Many students do not have adequate access to the internet at home—often referred to as the “homework gap,” the gap between students whose internet connections at home are slow or non-existent—and those who have home connections with adequate speed. States (29) are developing strategies either formally or informally to address affordable off campus internet access for students, especially in low-income and rural areas.

## Strategies for Affordable Off Campus Internet Access for Students



## CASE STUDIES

This publication includes a more in-depth look at how three states are ensuring reliable, cost effective connectivity for their districts and schools. Learn about [leadership practices](#) in Connecticut, Kentucky and Minnesota for both on and off campus connectivity. These states share unique stories around implementation, including examples showcasing how connectivity changes teaching and learning. <https://www.setda.org/priorities/equity-of-access/statek12broadbandleadership2019/>

## SPONSORS

