

Facility image redacted at the request of Department of Corrections

Facility image redacted at the request of Department of Corrections

Facility image redacted at the request of Department of Corrections

(N) SECTIONALIZING CABINET, PV SYSTEM DISCONNECT, LREC METER AND PROPOSED LBS LOCATION AT 25KV POINT OF INTERCONNECTION EVERSOURCE METER #081091971

Facility image redacted at the request of Department of Corrections

AC-RUN (STEP-UP XFMR - LBS) ≈2630 LF

(N) SITE ACCESS GATE
PROPOSED SOLAR SWITCHBOARD AND 2000KVA STEP-UP XFMR LOCATION

(N) FENCE ≈ 2,450 LF



VICINITY MAP:
LATITUDE: 41.519923°
LONGITUDE: -72.904971°

SUNPOWER

1414 HARBOUR WAY SOUTH
RICHMOND, CA 94804 USA
(510) 540-0550

THIS DOCUMENT CONTAINS PROPRIETARY INFORMATION. REPRODUCTION, DISCLOSURE, OR USE WITHOUT SPECIFIC WRITTEN PERMISSION OF SUNPOWER CORPORATION IS STRICTLY PROHIBITED.

ENGINEER'S STAMP
**CONNECTICUT GREEN BANK
MALONEY & WEBSTER (CHESHIRE CORRECTIONAL)**

900 HIGHLAND AVE
CHESHIRE, CT 06410

ARRAY LAYOUT

REV	DESIGN #	DESCRIPTION	DATE	DB	CB
A	D-0100073	PROPOSAL	02-11-20	AA	ES
B	D-0103855	SITE NEW INFORMATION	04-07-20	AA	ES
C	D-0101782	CHANGE IN MODULE TYPE	03-16-21	MB	DW
D		CHANGE MODULE TYPE	04-27-21	JF	DW

LEGEND:

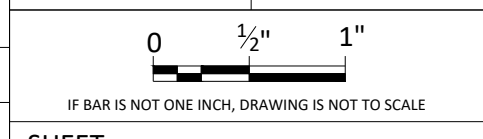
- PROPOSED SOLAR SWITCHBOARD
- PROPOSED POINT OF INTERCONNECTION
- AC CONDUITS (SSB-LBS)
- DC CONDUITS (CB-INV)

PROJECT SUMMARY

PROJECT SUMMARY	GFT
TOTAL # OF MODULE	5160
MODULE TYPE	TSM-DEG15VC.20(II) 470
STRING LENGTH	30
# OF SMA PEAK 3 INVERTER	13
TOTAL # OF COMBINER BOX	13
DC SYSTEM SIZE (kW)	2425.20
AC SYSTEM SIZE (kW)	1950.00

OPPORTUNITY 0001930120

PROJECT ----



SHEET

AL1

1 ARRAY LAYOUT
SCALE: 1/128" = 1'-0"

- NOTES:
- 113 MPH WIND ZONE (ASCE 7-10) CATEGORY I, EXPOSURE C
 - SNOWLOAD 30 PSF, ELEVATION 232'
 - ARRAY SHOWN ON AERIAL IMAGE
 - FOUNDATION ARE DRIVEN POST WITH 8" EMBEDMENT
 - ALL TREES WITHIN ARRAY BOUNDARY NEED TO BE REMOVED PRIOR TO INSTALLATION
 - MAXIMUM PANEL HEIGHT FROM GRADE: 3FT

BLOCK	# MODULE	#STRING	KW (DC)	18 INPUT CB (W/ 14STR)	18 INPUT CB (W/ 13STR)	SMA PEAK 3 SHP 150-US	KW (AC)	GCR	TILT (°)	CSI AZIMUTH (°)	SPWR AZIMUTH (°)	DC RUN (CB-INV)
1	5160	172	2425.2	3	10	13	1950	0.50	25	180	0	370, 310, 280, 250, 190, 125, 185, 245, 335, 365, 425, 485, 545

TIER 1