



STATE OF CONNECTICUT

CONNECTICUT SITING COUNCIL

Ten Franklin Square, New Britain, CT 06051

Phone: (860) 827-2935 Fax: (860) 827-2950

E-Mail: siting.council@po.state.ct.us

Web Site: www.ct.gov/csc

Post-Construction Report

Date: August 23, 2011

Re: **DOCKET NO. 387** – SBA Towers II, LLC application for a Certificate of Environmental Compatibility and Public Need for the construction, maintenance and operation of a telecommunications facility at 44 Gavitt Road, Barkhamsted, Connecticut.

In this docket, SBA proposed building a 170-foot monopole tower within a 70-foot by 70-foot compound on a 36-acre property owned by Karen and Richard Langer at 44 Gavitt Road in Barkhamsted. AT&T and Verizon participated in this proceeding as likely tenants. Pocket submitted a letter indicating that it was also interested in locating on this tower. The Council approved a facility with a 170-foot tower at the proposed site on February 25, 2010. The Development and Management Plan was approved on May 18, 2010.

I visited this site on August 22, 2011. At the time of my visit, all site construction work was completed. The tower was erected. The compound was well graveled and enclosed by an eight-foot chain link fence. All utilities were hooked up. There were six meter placements on the compound's utility board with one meter in place for AT&T. AT&T's antennas were mounted on a low profile platform at the top of the tower.

This facility is near the top of a hill with a long, steep access road to it. The gravel drive was well-established with riprap swales, splash pad areas, and culverts installed as indicated on the approved D&M plans. There were no erosion issues at the time of my visit.

Topography and a profusion of mature deciduous and coniferous trees in the area combine to limit the visibility of this tower. There are a few short distances on Legeyt Road and Shannon Road from which I was able to see the tower. In general, however, the tower was not visible from the main roads in the vicinity.

Conditions observed at the site at the time of my visit conformed to the approved D&M plans.

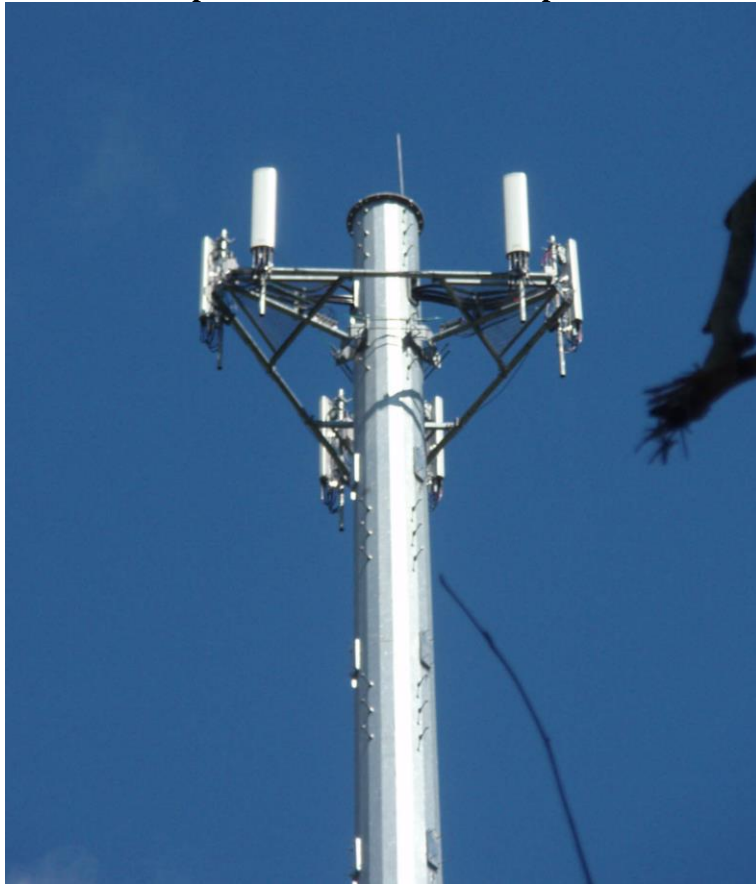
View of tower



View of base compound



Close up of antennas mounted at top of tower



Culvert and riprap splash pad next to access drive



Culvert and riprap splash pad near access drive entrance



View of tower from #21 Legeyt Road



Simulated view from application



View from Legeyt Road, east of #21

