



# Middletown-Norwalk Project

---

**Route Analysis: Beseck to East Devon via East Shore**  
**Prepared for the Connecticut Siting Council**

**June 2, 2004**



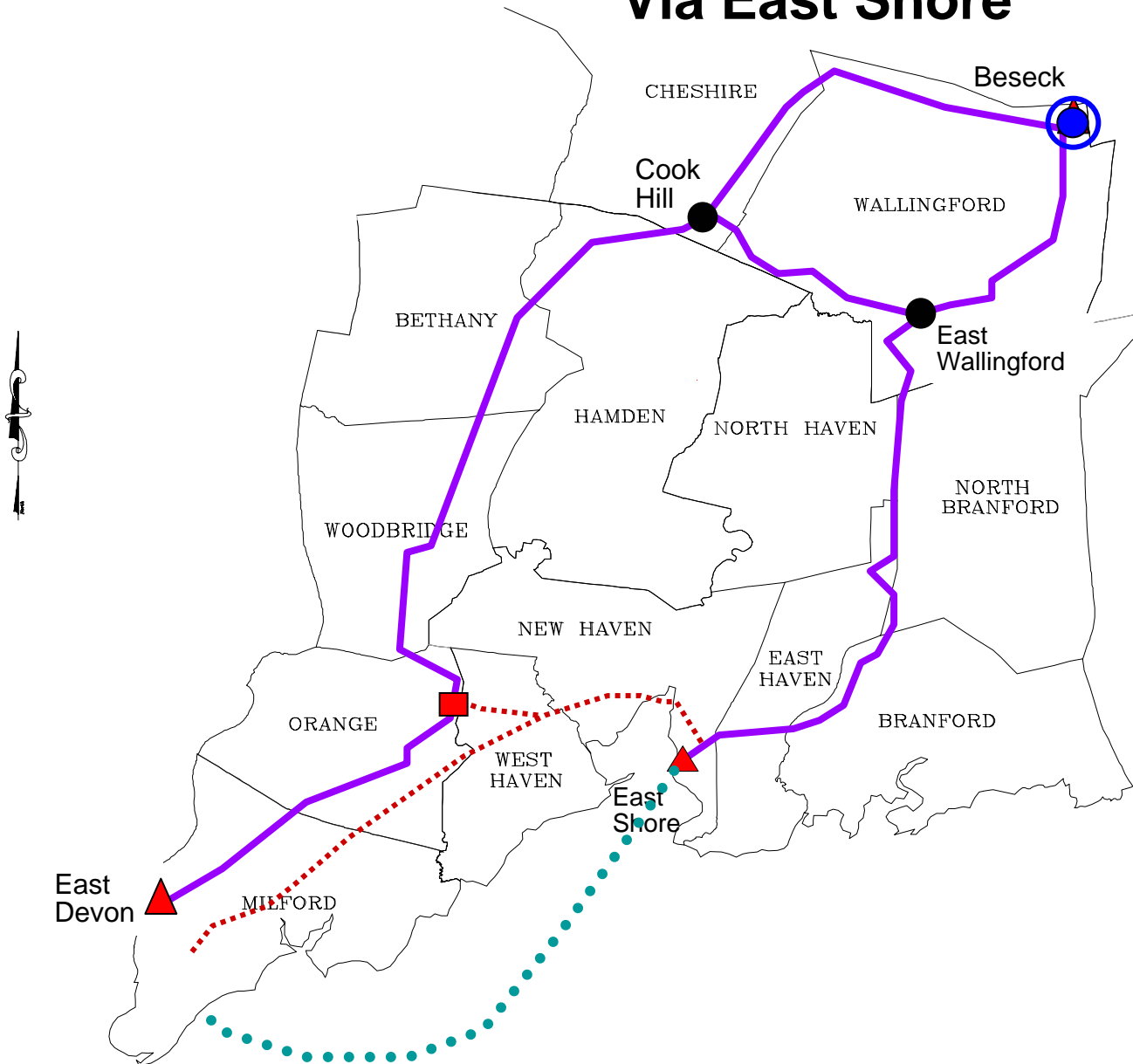
**Connecticut  
Light & Power**

The Northeast Utilities System

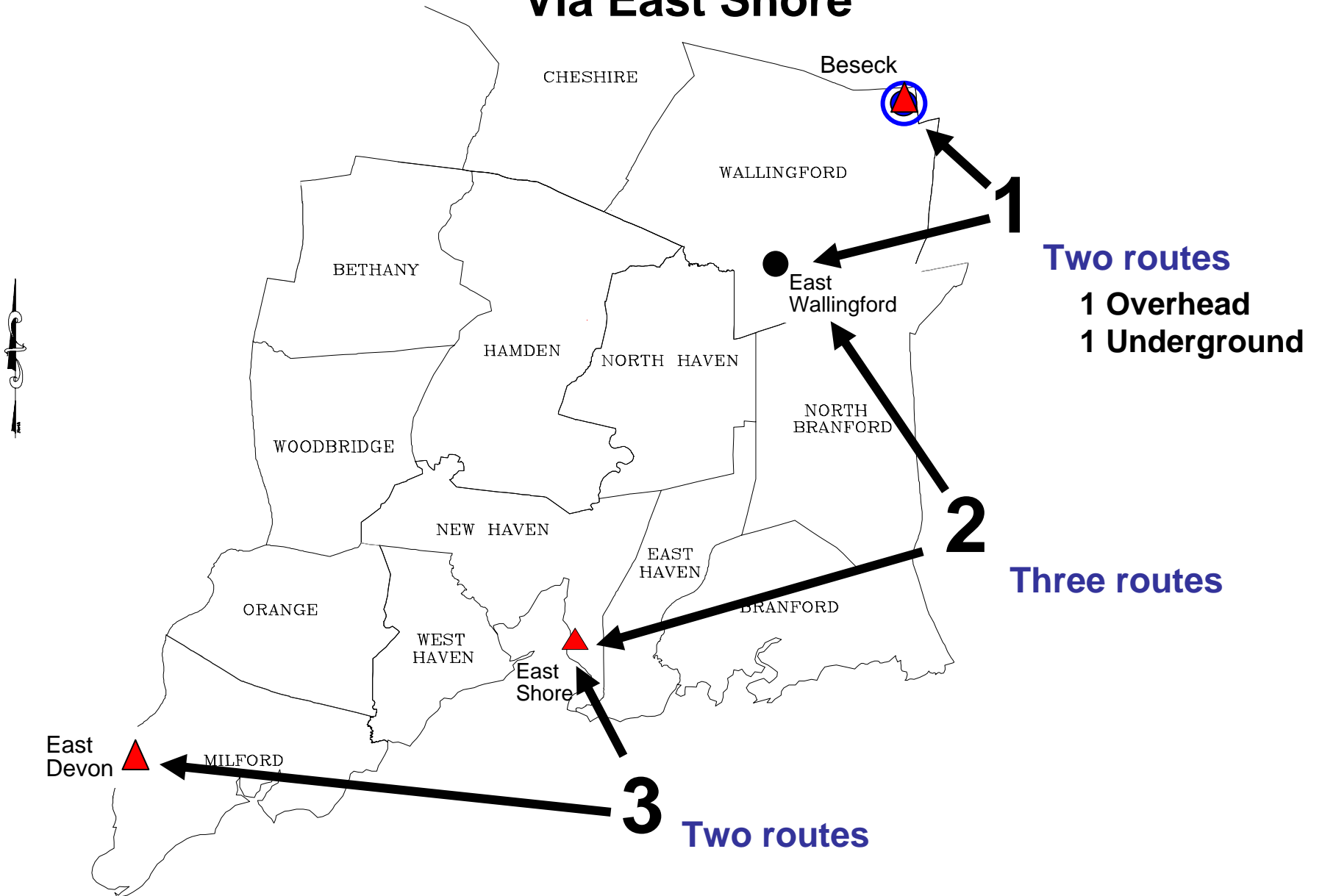


*The United Illuminating Company*

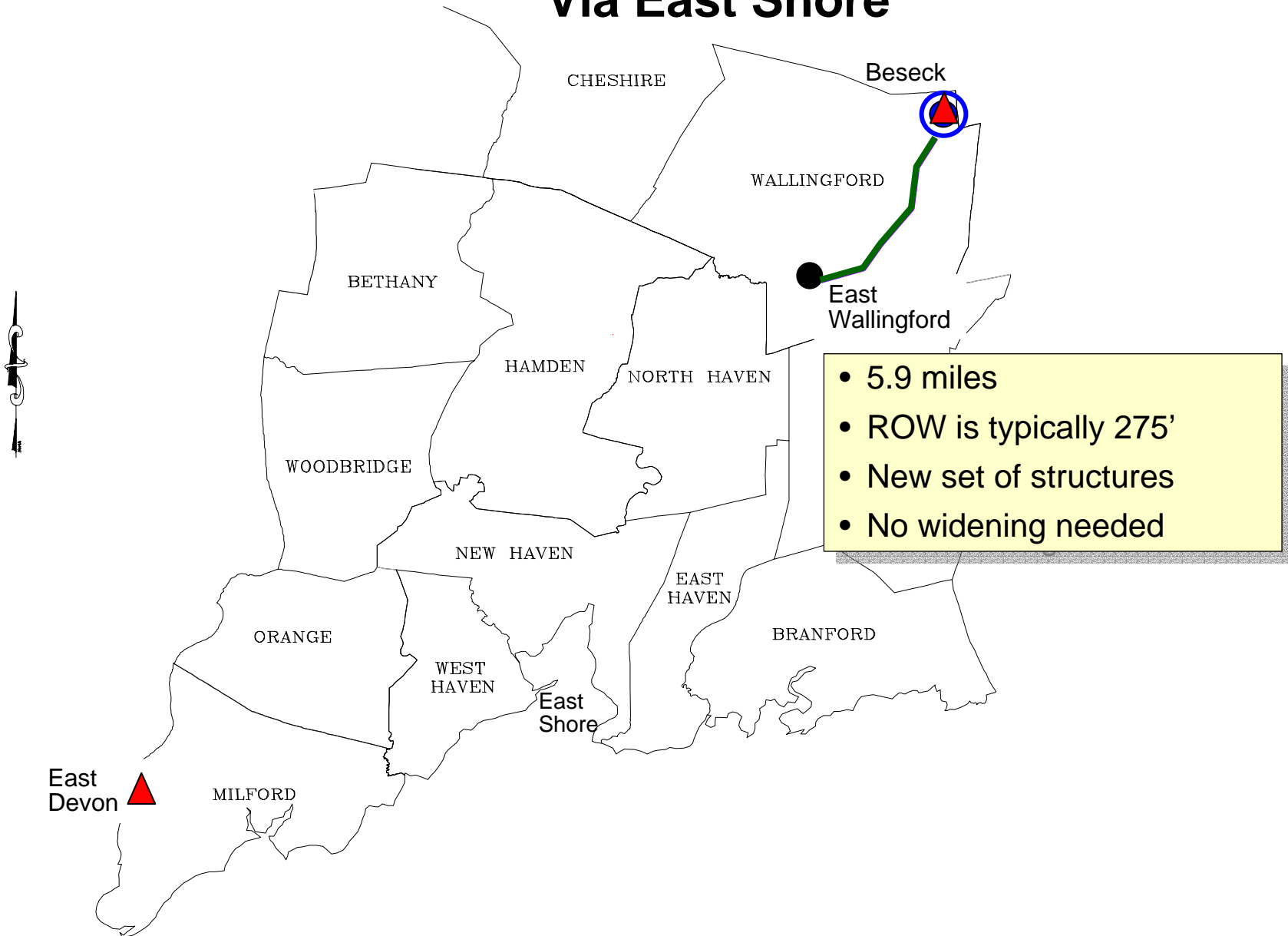
# Segment 2: Beseck to East Devon Via East Shore



# Segment 2: Beseck to East Devon Via East Shore



## Segment 2: Beseck to East Devon Via East Shore



# Beseck to E. Wallingford (1 of 3)

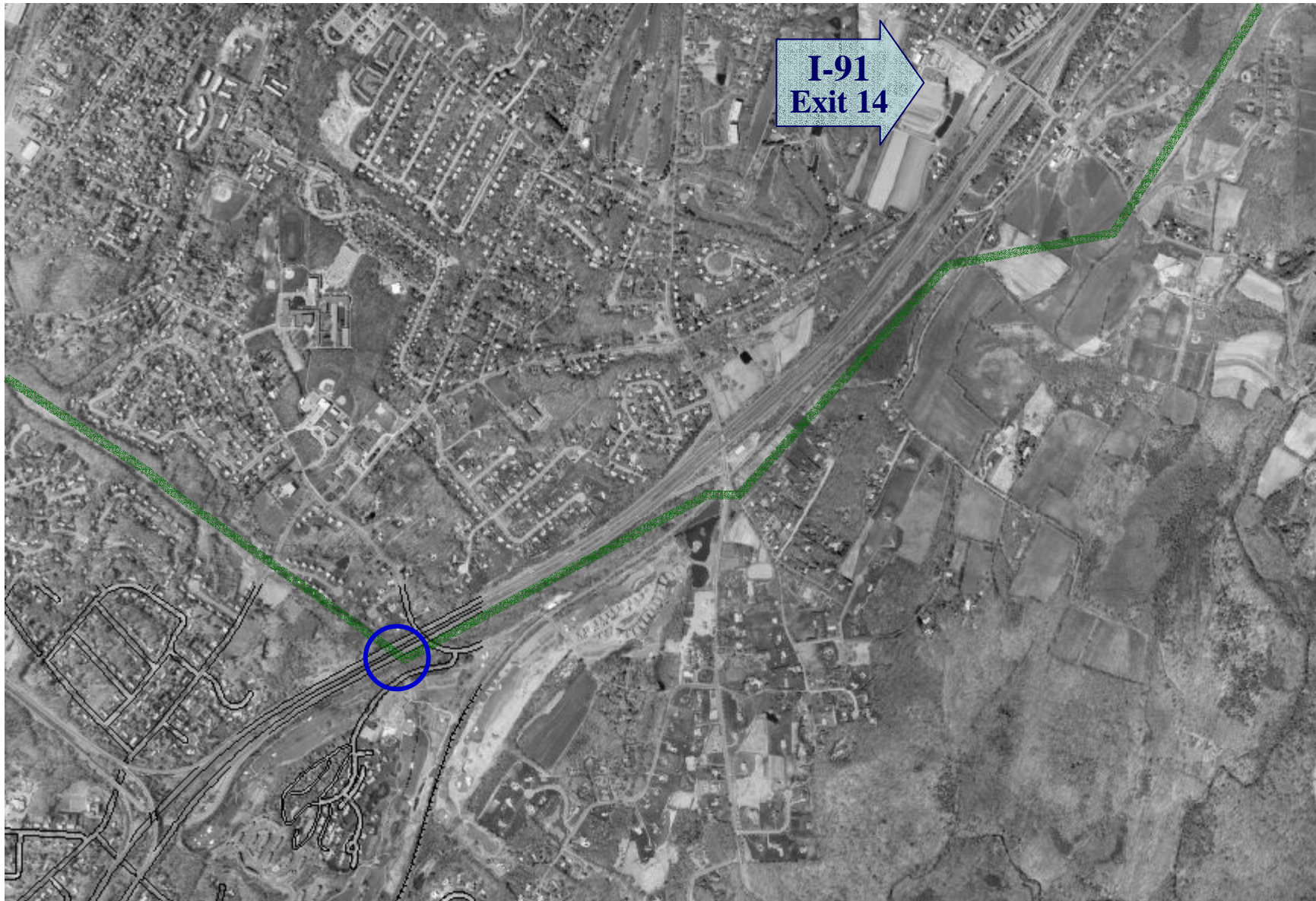


## Beseck to E. Wallingford (2 of 3)

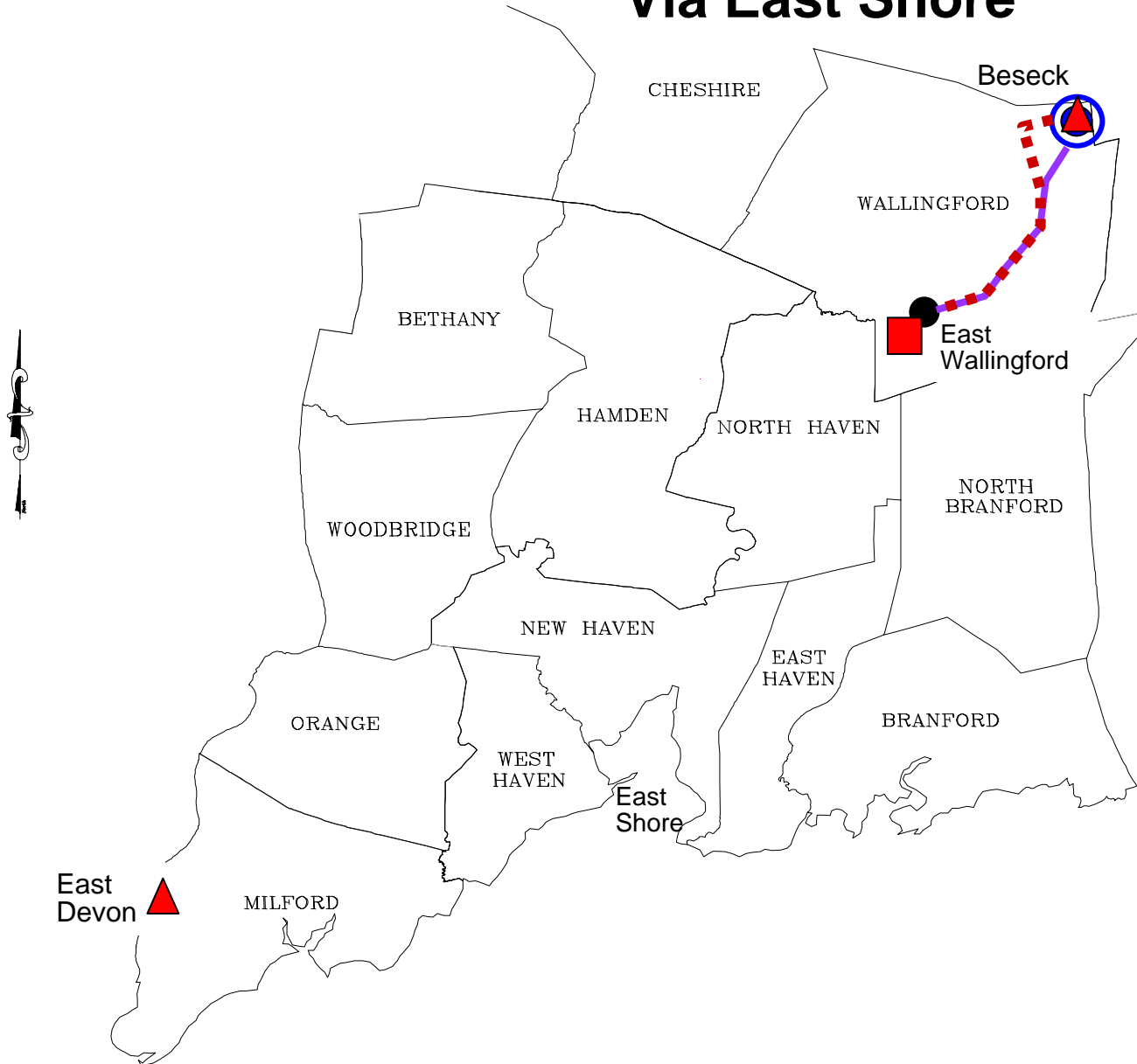


**I-91  
Exit 14**

# Beseck to E. Wallingford (3 of 3)

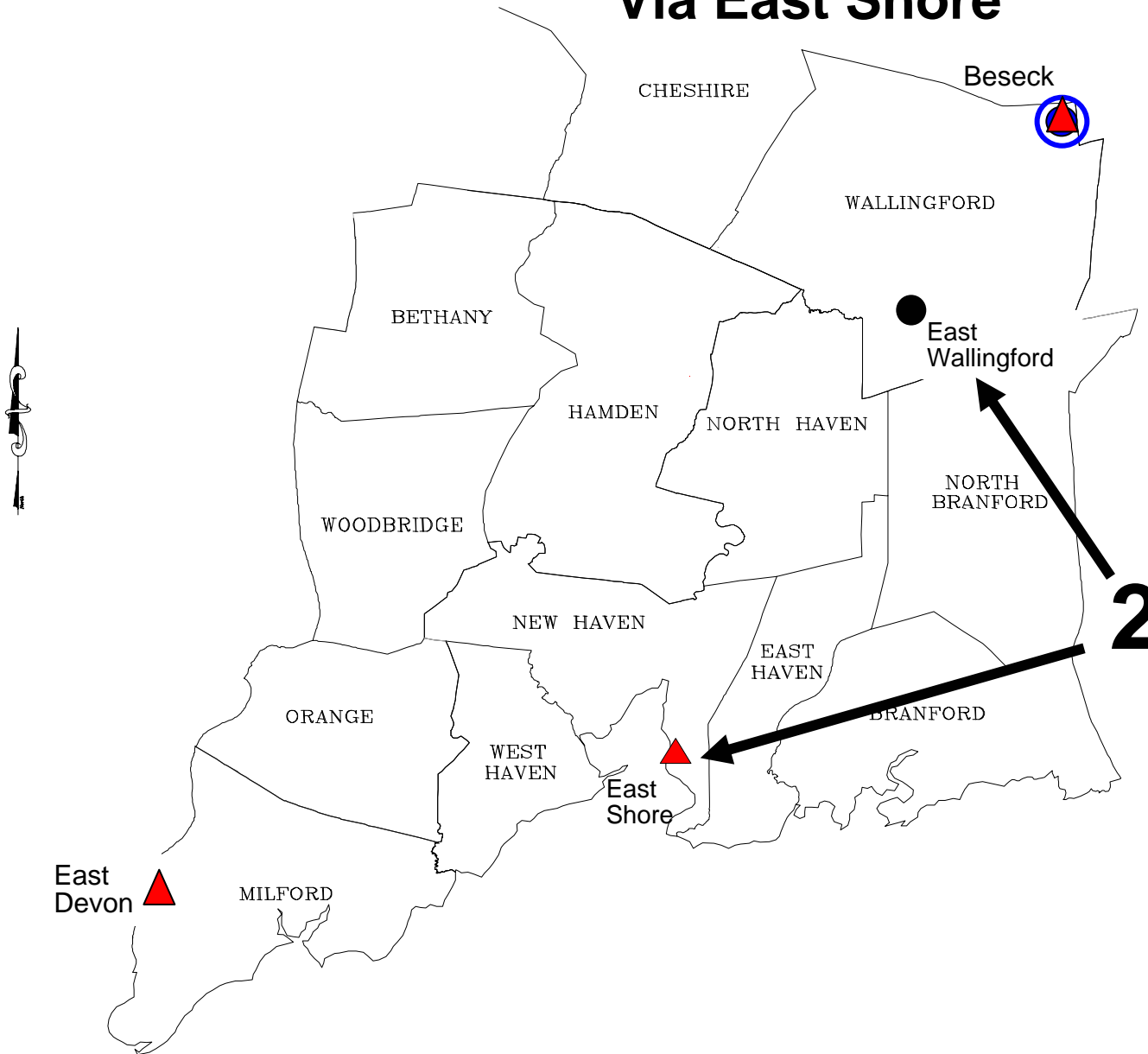


# Segment 2: Beseck to East Devon Via East Shore



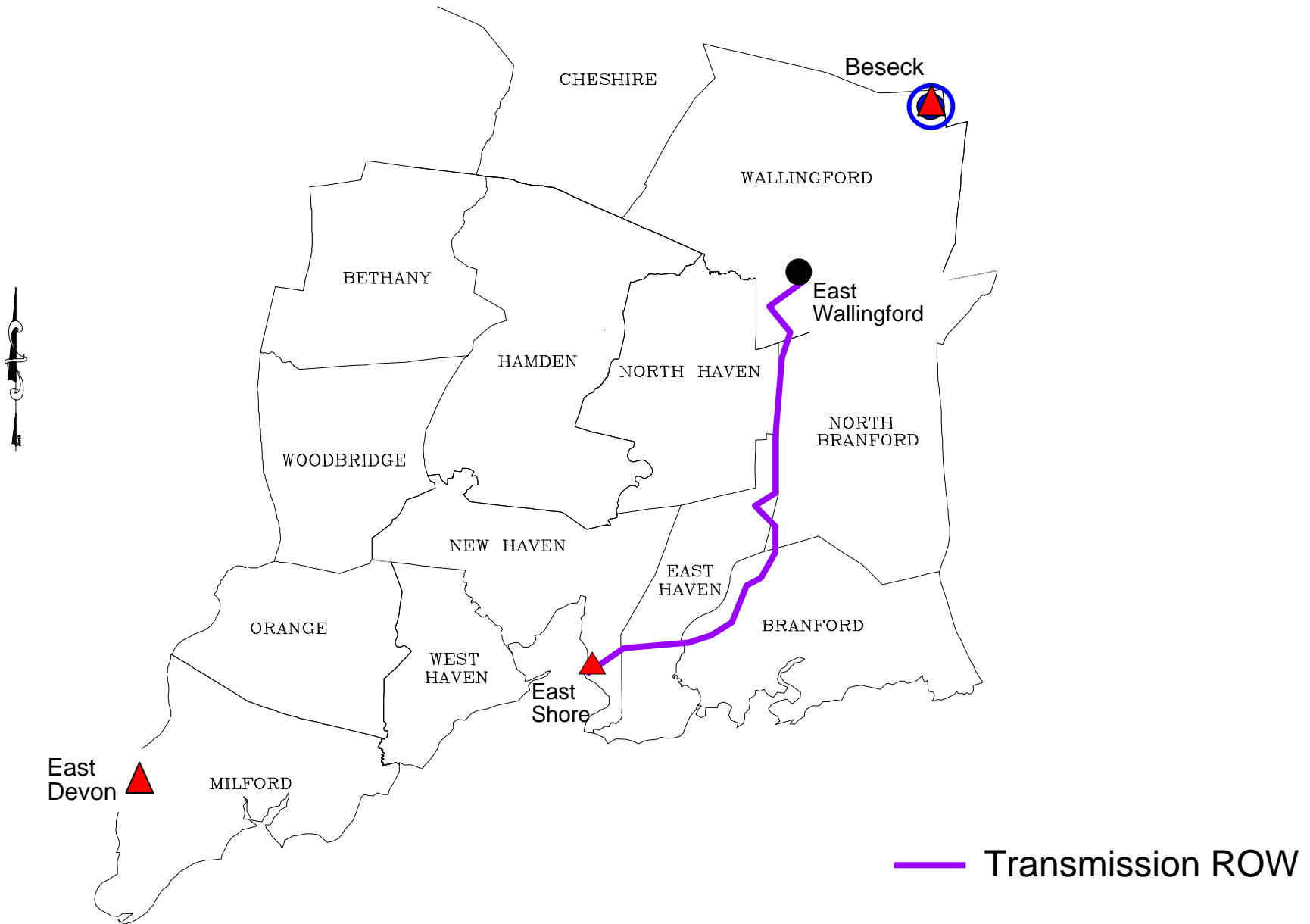


# Segment 2: Beseck to East Devon Via East Shore

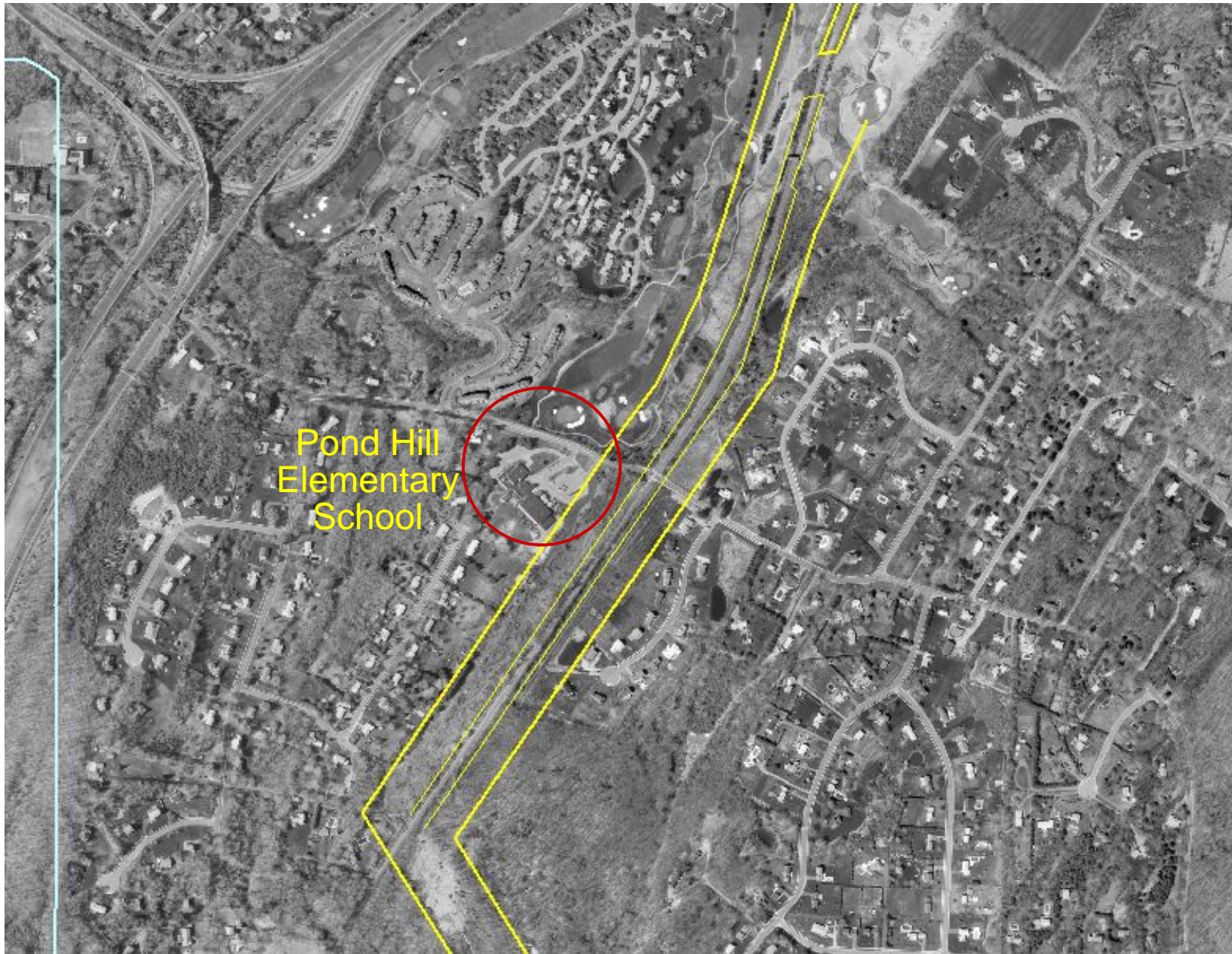


**Three routes:**  
Transmission ROW  
Conrail Corridor  
Amtrak Corridor

# Segment 2: Beseck to East Devon



# Beseck to E. Shore: Wallingford



## 387 ROW next to Pond Hill Elementary - Wallingford



Just beyond the 387 corridor is the “Airline” RR corridor

## 387 ROW Roxbury Lane



Between the house and the 387 line is also the Airline corridor

# Beseck to E. Shore: North Haven – North Branford



# 387 ROW Hanson Farm Road – North Haven



# 387 ROW Colonial Heights – East Haven

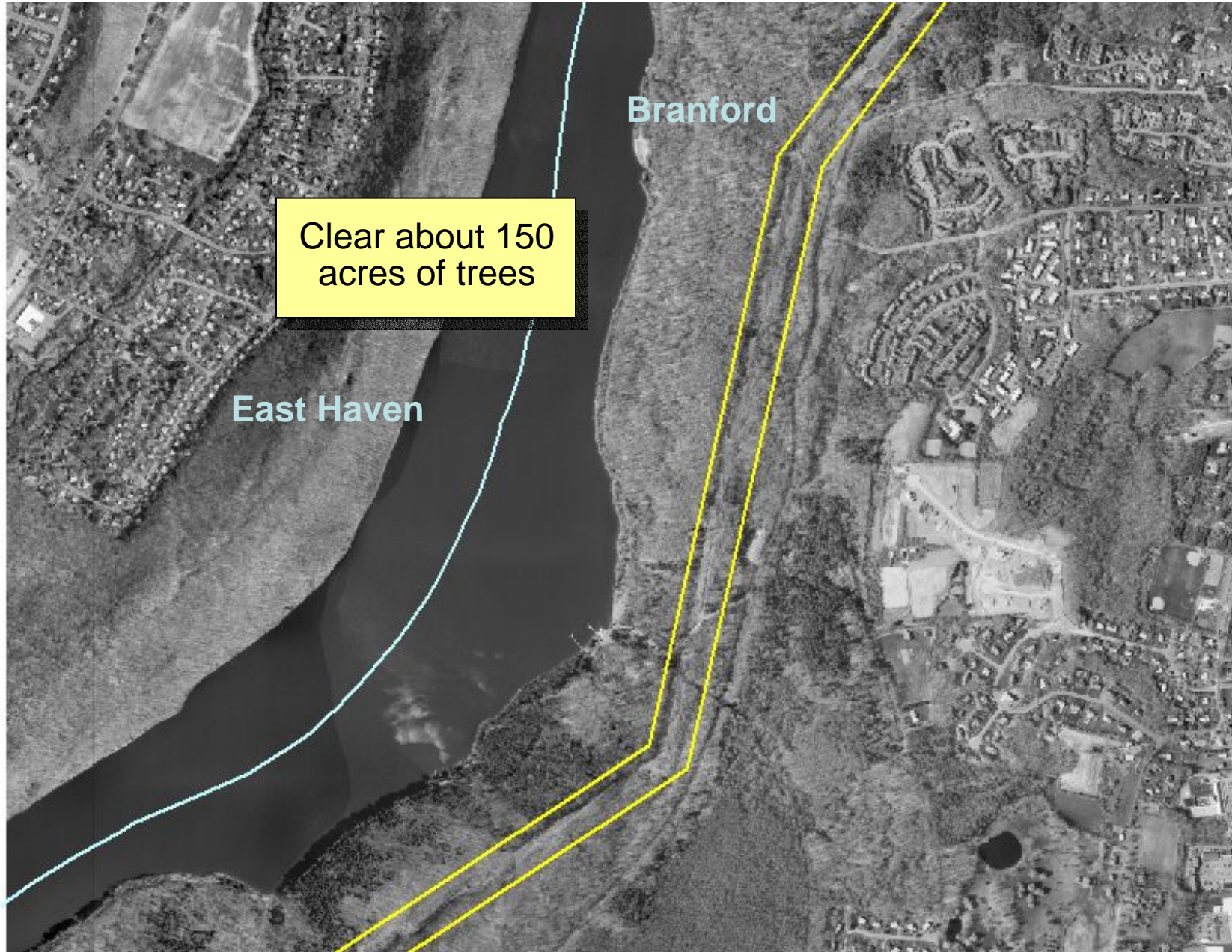




# 387 ROW CT Sportsplex – East Haven



# Beseck to E. Shore: Branford



Clear about 150  
acres of trees

Branford

East Haven

# 387 ROW Lake Saltonstall Recreation Area - Branford



# Beseck to E. Shore: East Haven

