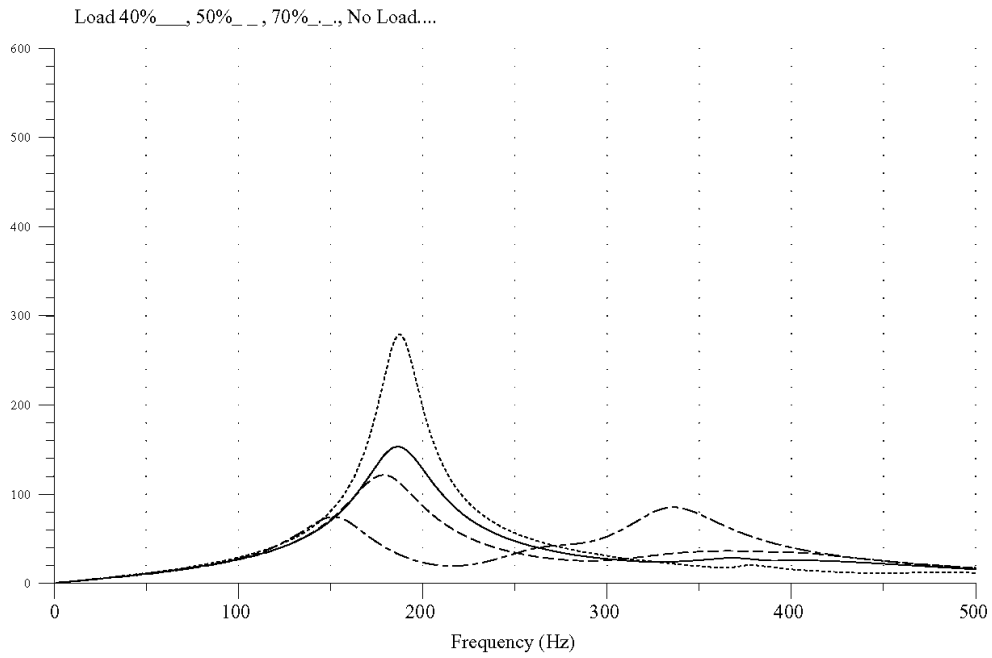


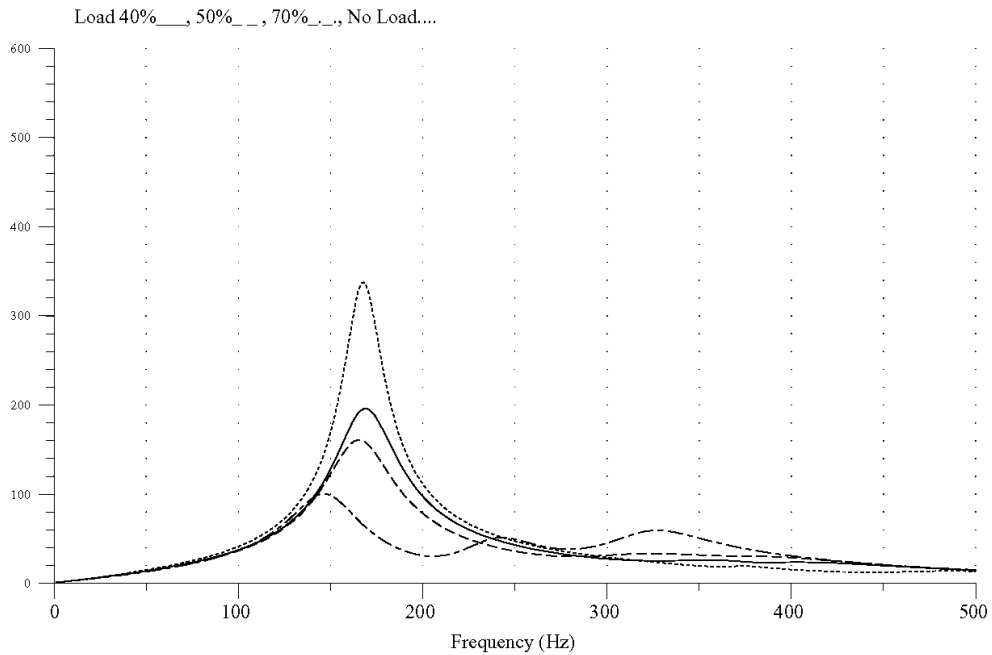
Norwalk 345 kV Positive-Sequence Driving Point Impedance (ohms)
All Lines In



06-Dec-04 23:53:28 ALLIN40.PL4

Page 1

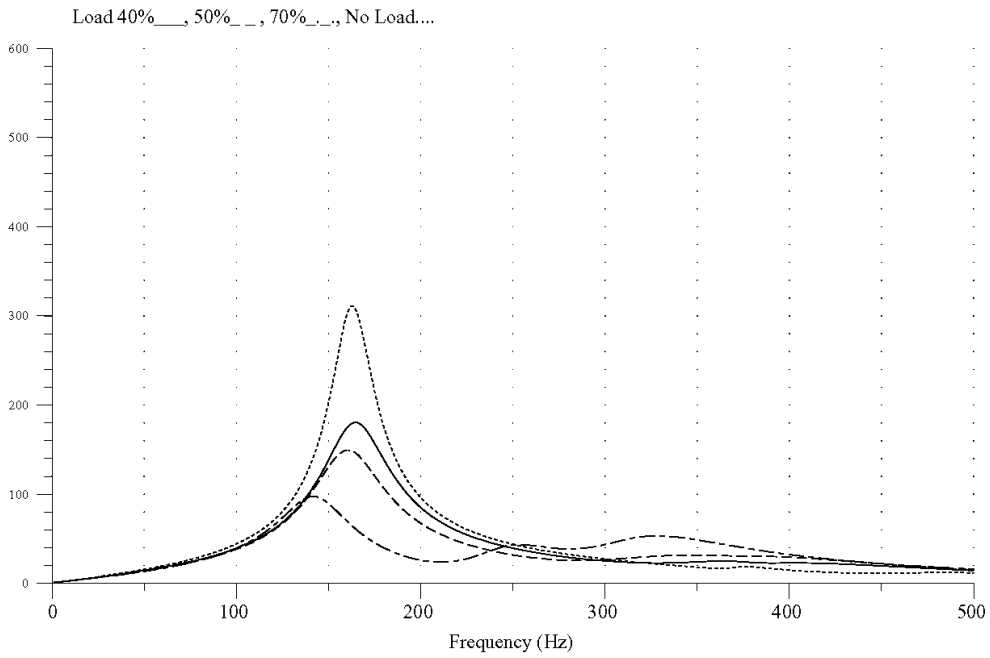
Norwalk 345 kV Positive-Sequence Driving Point Impedance (ohms)
E. Devon - Beseck Line Out



07-Dec-04 01:51:21 ED-BS40.PL4

Page 1

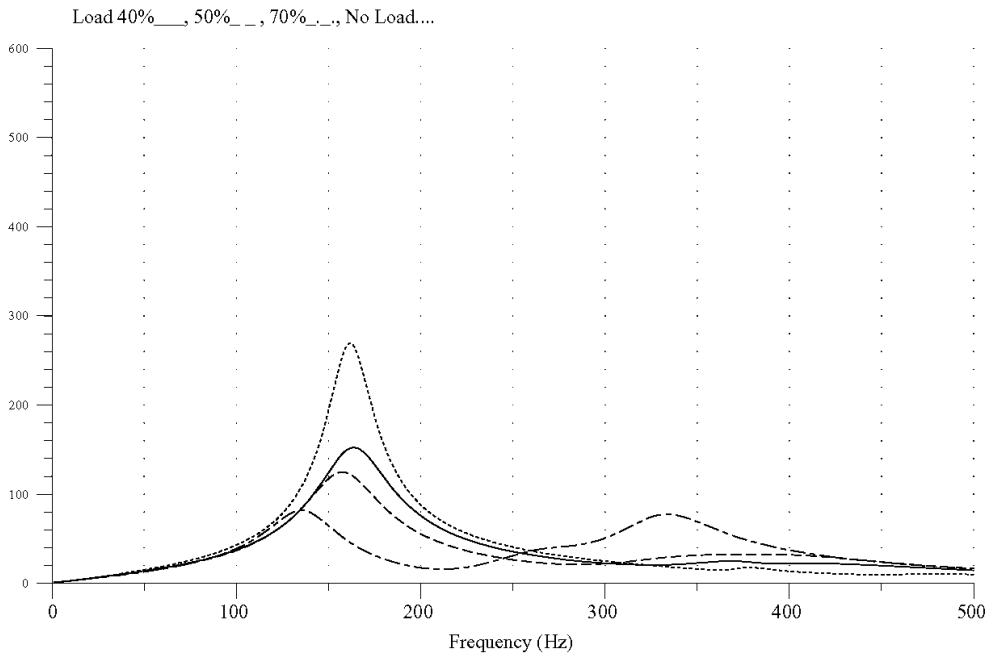
Norwalk 345 kV Positive-Sequence Driving Point Impedance (ohms)
Plumtree - Long Mountain Line Out



07-Dec-04 01:53:10 PL-LM40.PL4

Page 1

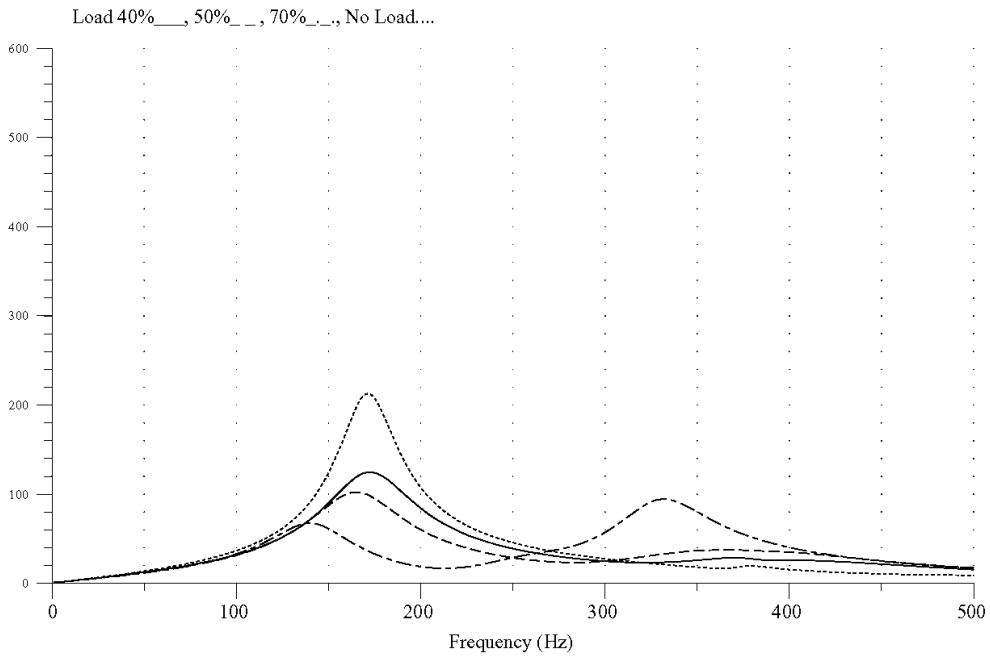
Norwalk 345 kV Positive-Sequence Driving Point Impedance (ohms)
Long Mountain - Pleasant Valley Line Out



07-Dec-04 01:55:00 LM-PV40.PL4

Page 1

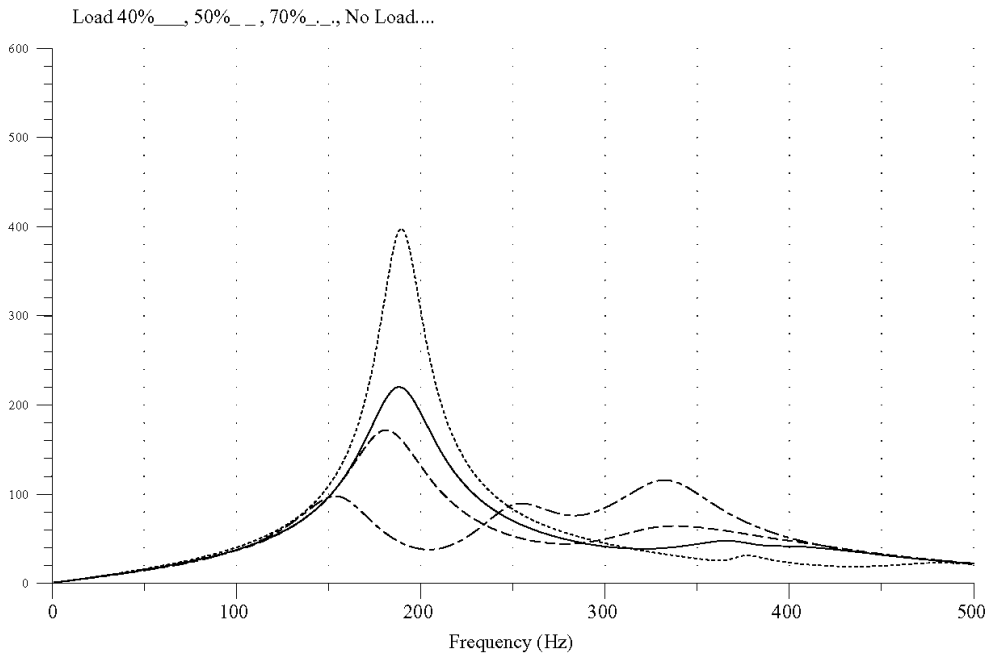
Norwalk 345 kV Positive-Sequence Driving Point Impedance (ohms)
Norwalk Harbor - Northport LI Cables Out



07-Dec-04 01:56:50 NH-LI40.PL4

Page 1

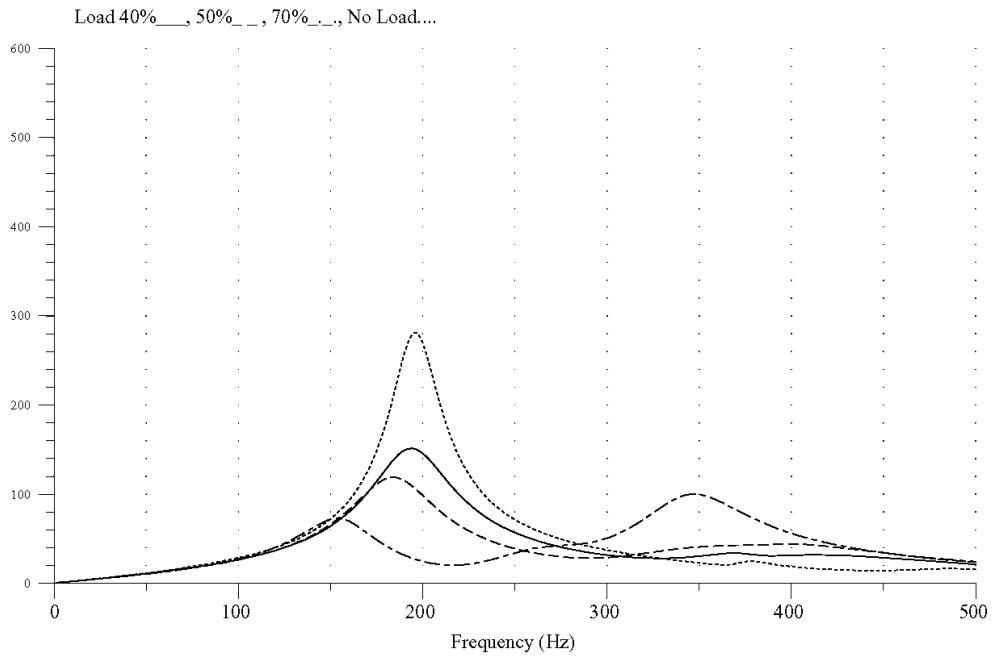
Norwalk 345 kV Positive-Sequence Driving Point Impedance (ohms)
Norwalk - Plumtree Cable Out



07-Dec-04 01:58:40 NR-PL40.PL4

Page 1

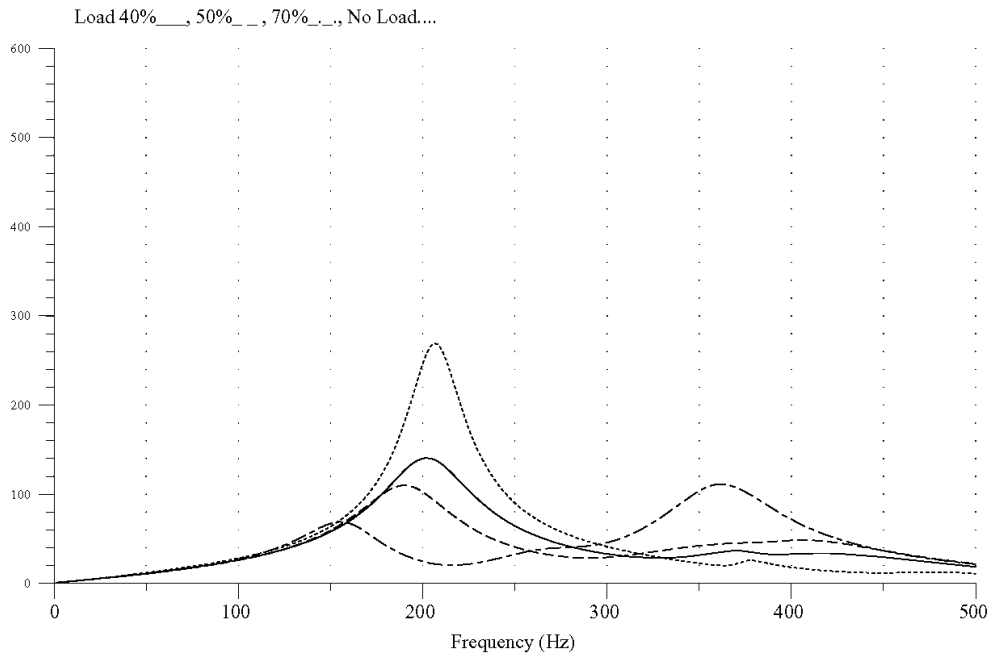
Norwalk 345 kV Positive-Sequence Driving Point Impedance (ohms)
Singer - E. Devon Cable Out



07-Dec-04 02:00:30 SG-ED40.PL4

Page 1

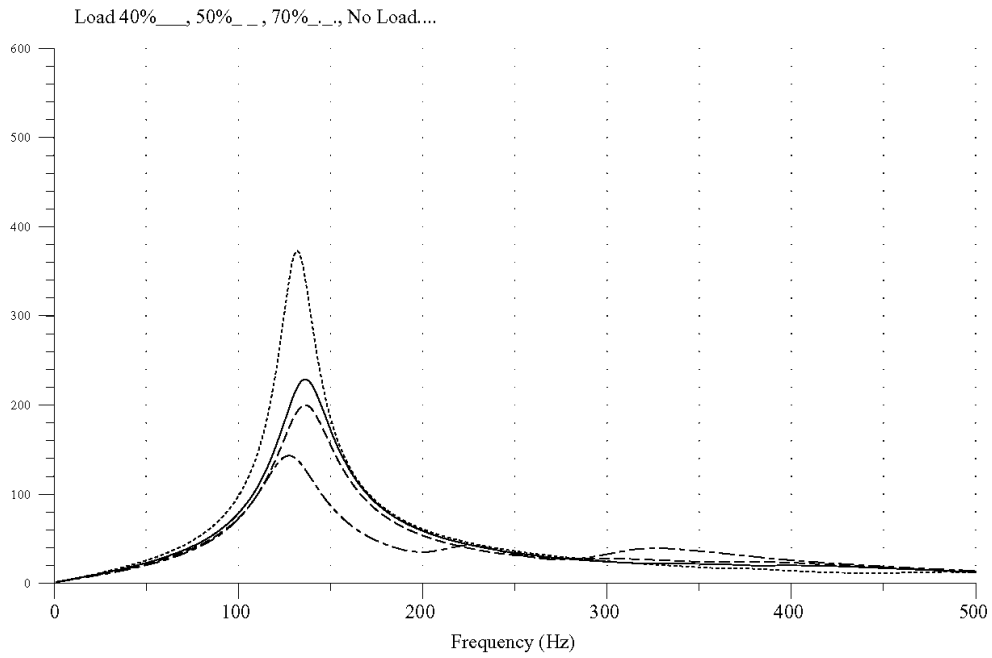
Norwalk 345 kV Positive-Sequence Driving Point Impedance (ohms)
Norwalk - Singer Cable Out



07-Dec-04 02:02:20 NR-SG40.PL4

Page 1

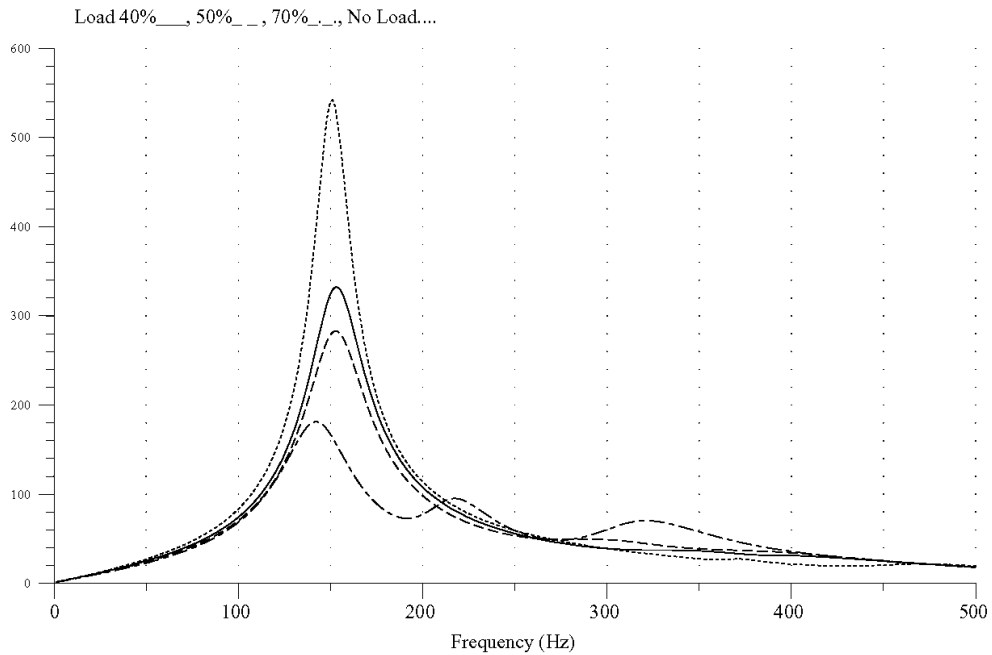
Norwalk 345 kV Positive-Sequence Driving Point Impedance (ohms)
E. Devon - Beseck Line and Plumtree - Long Mountain Line Out



07-Dec-04 02:07:49 ED-BS_PL-LM40.PL4

Page 1

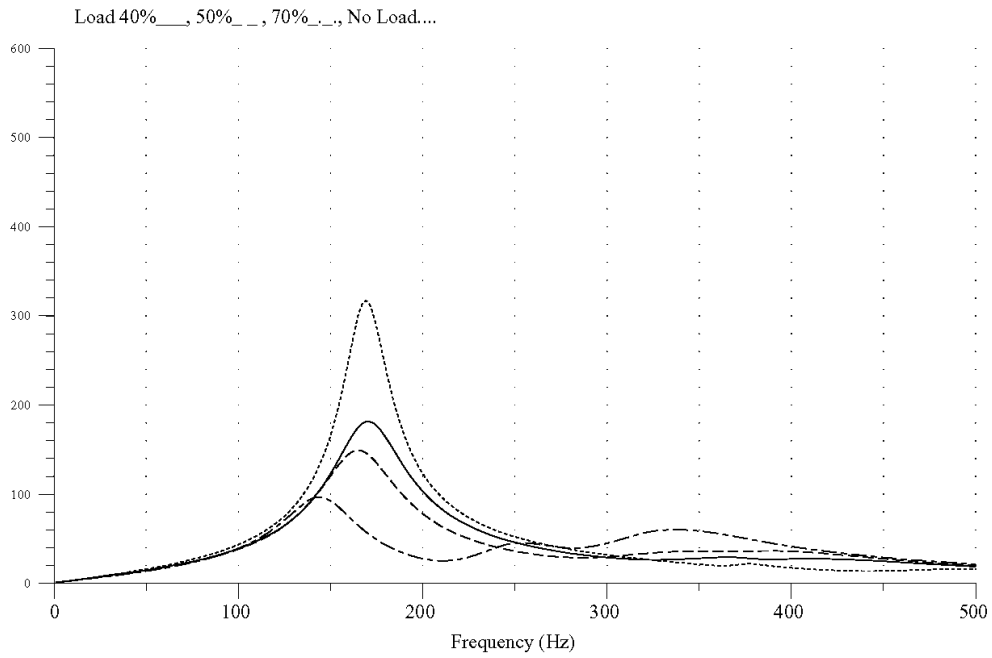
Norwalk 345 kV Positive-Sequence Driving Point Impedance (ohms)
Norwalk - Plumtree Cable and E. Devon - Beseck Line Out



07-Dec-04 02:05:59 NR-PL_ED-BS40.PL4

Page 1

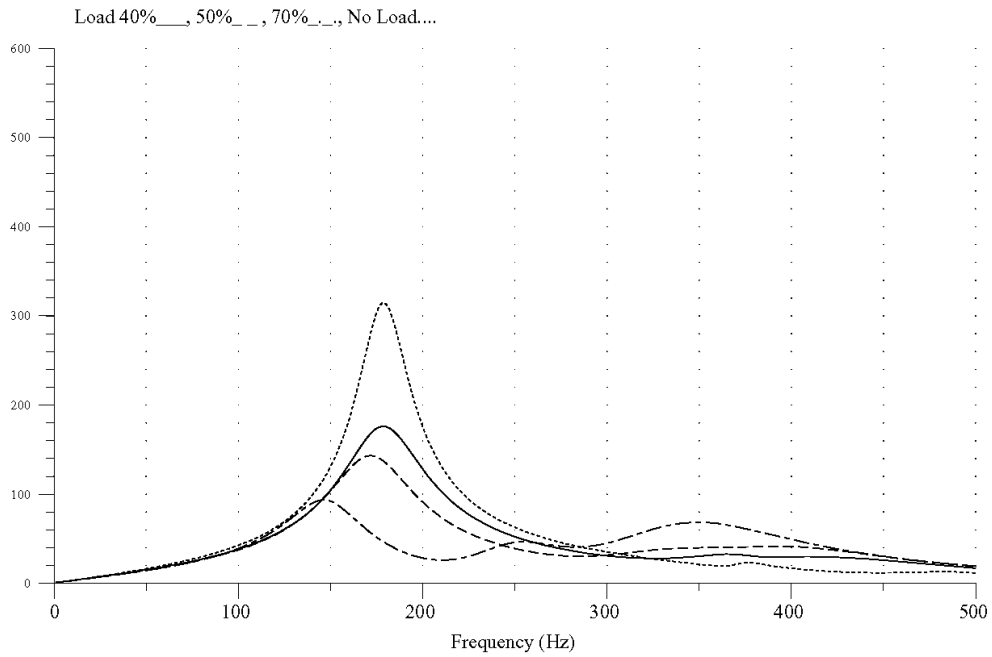
Norwalk 345 kV Positive-Sequence Driving Point Impedance (ohms)
Singer - E. Devon Cable and Plumtree - Long Mountain Line Out



07-Dec-04 02:04:10 SG-ED_PL-LM40.PL4

Page 1

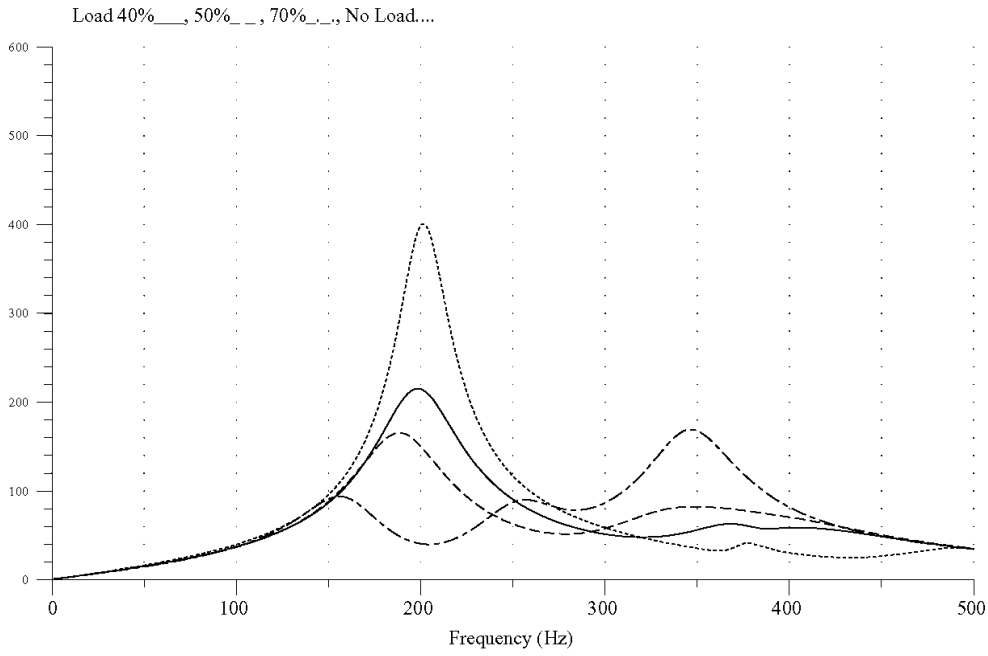
Norwalk 345 kV Positive-Sequence Driving Point Impedance (ohms)
Plumtree - Long Mountain Line and Norwalk - Singer Cable Out



14-Dec-04 00:14:11 PL-LM_NR-SG40.PL4

Page 1

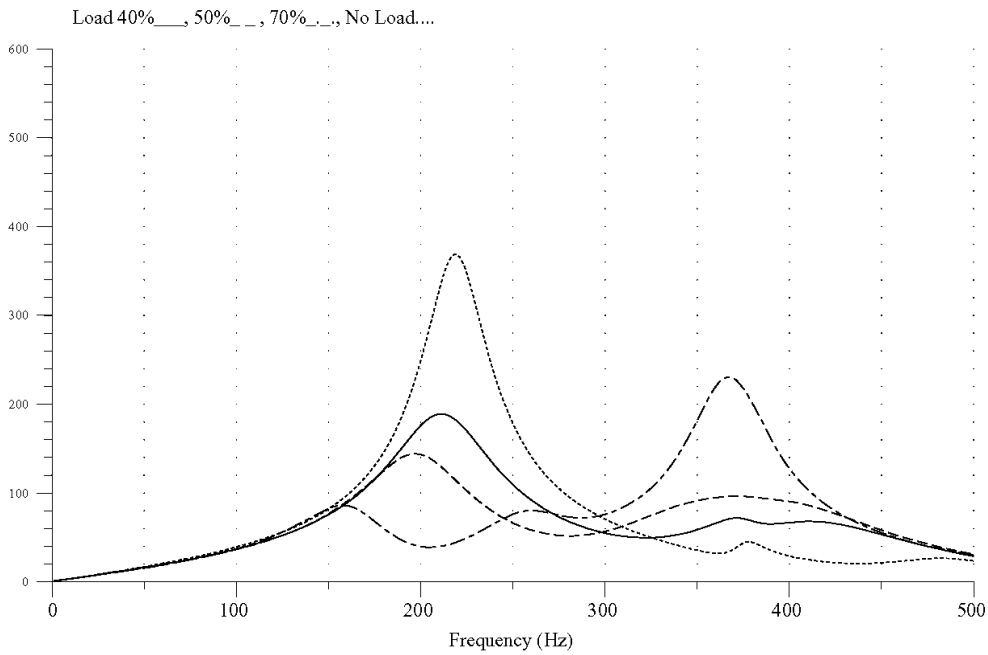
Norwalk 345 kV Positive-Sequence Driving Point Impedance (ohms)
Norwalk - Plumtree and Singer - East Devon Cables Out



14-Dec-04 00:41:05 NR-PL_SG-ED40.PL4

Page 1

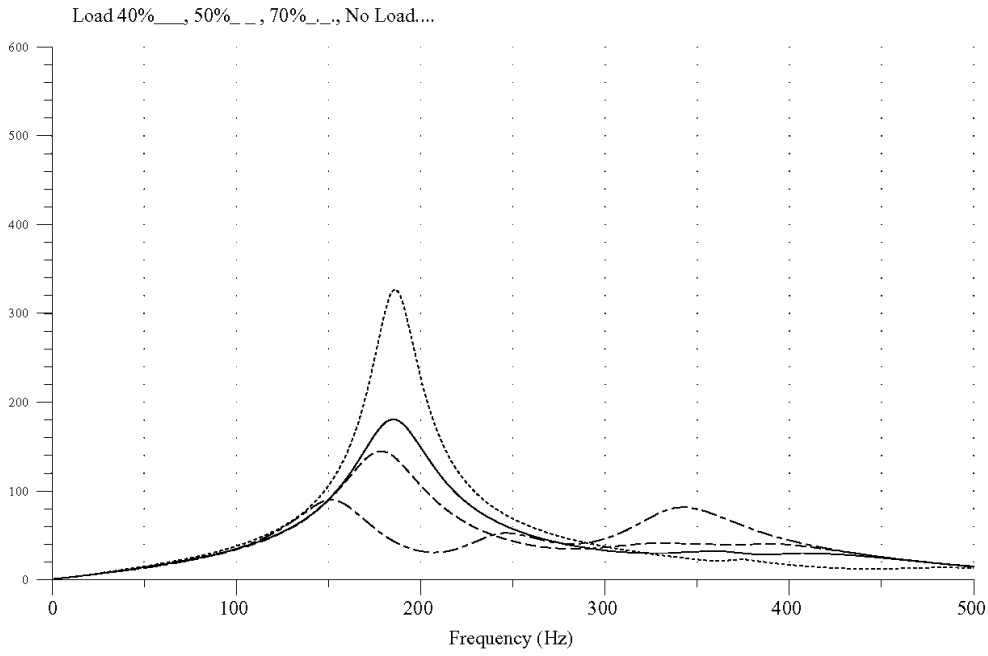
Norwalk 345 kV Positive-Sequence Driving Point Impedance (ohms)
Norwalk - Plumtree and Norwalk - Singer Cables Out



14-Dec-04 00:55:03 NR-PL_NR-SG40.PL4

Page 1

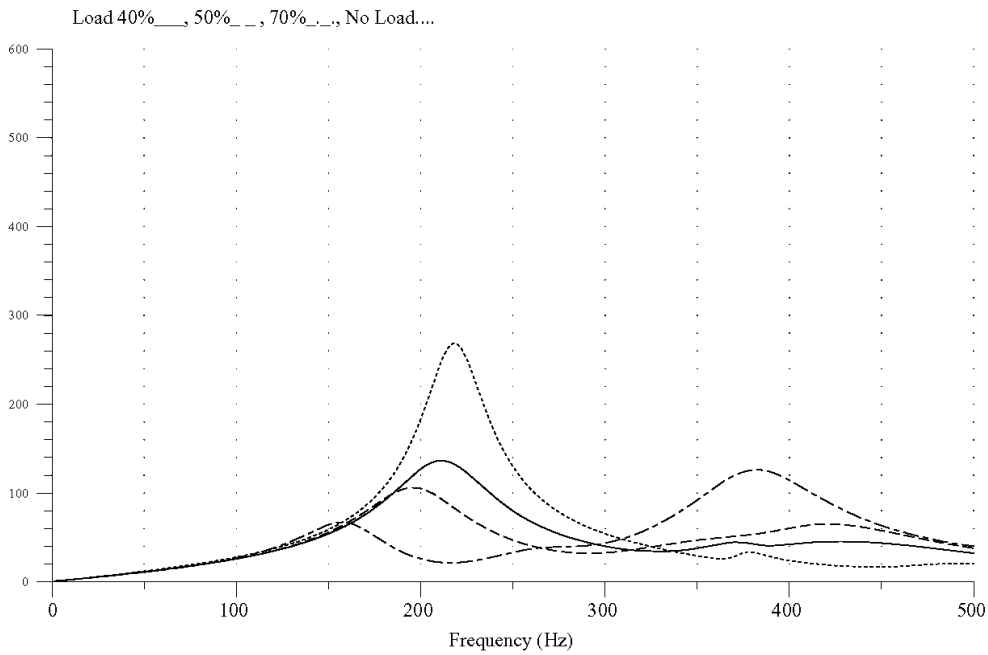
Norwalk 345 kV Positive-Sequence Driving Point Impedance (ohms)
East Devon - Beseck Line and Norwalk - Singer Cable Out



14-Dec-04 01:06:10 ED-BS_NR-SG40.PL4

Page 1

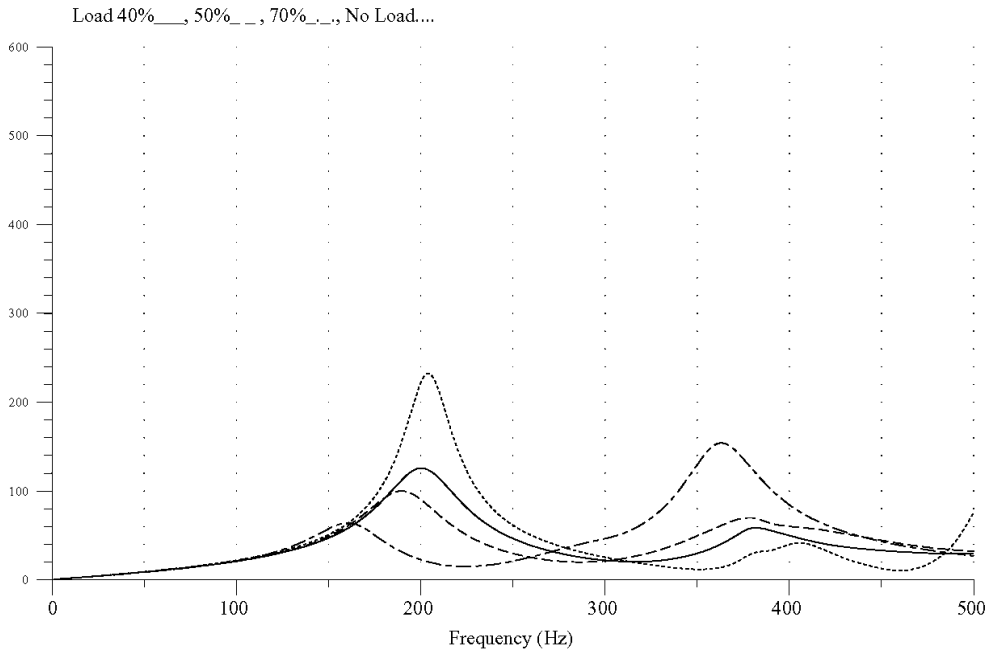
Norwalk 345 kV Positive-Sequence Driving Point Impedance (ohms)
Norwalk - Singer and Singer - East Devon Cables Out



14-Dec-04 01:20:44 NR-SG_SG-ED40.PL4

Page 1

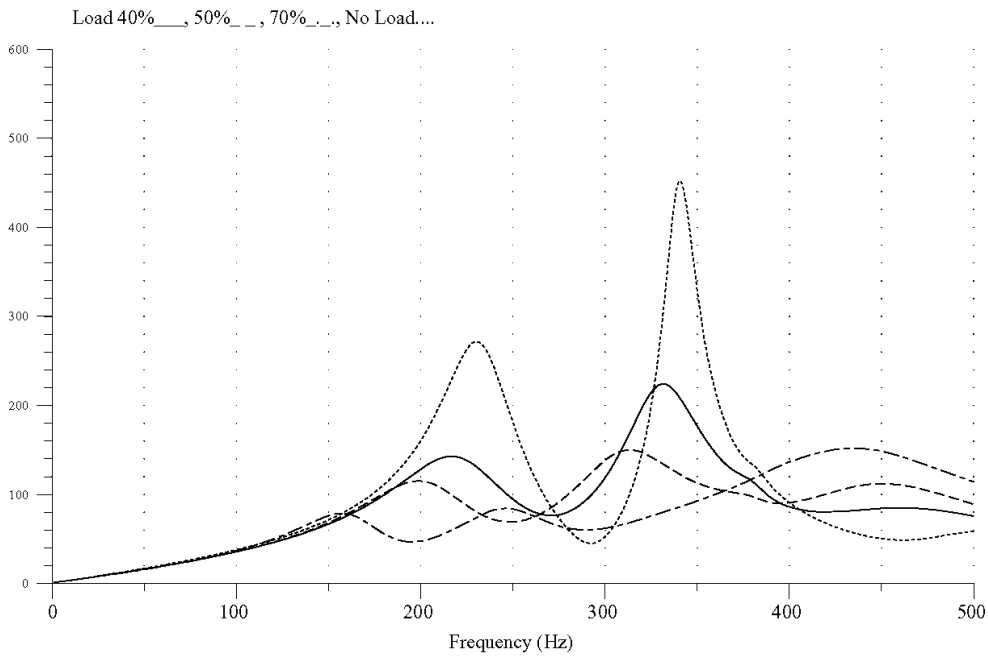
Norwalk 345 kV Positive-Sequence Driving Point Impedance (ohms)
Singer - East Devon Cable and East Devon - Beseck Line Out



14-Dec-04 01:33:53 SG-ED_ED-BS40.PL4

Page 1

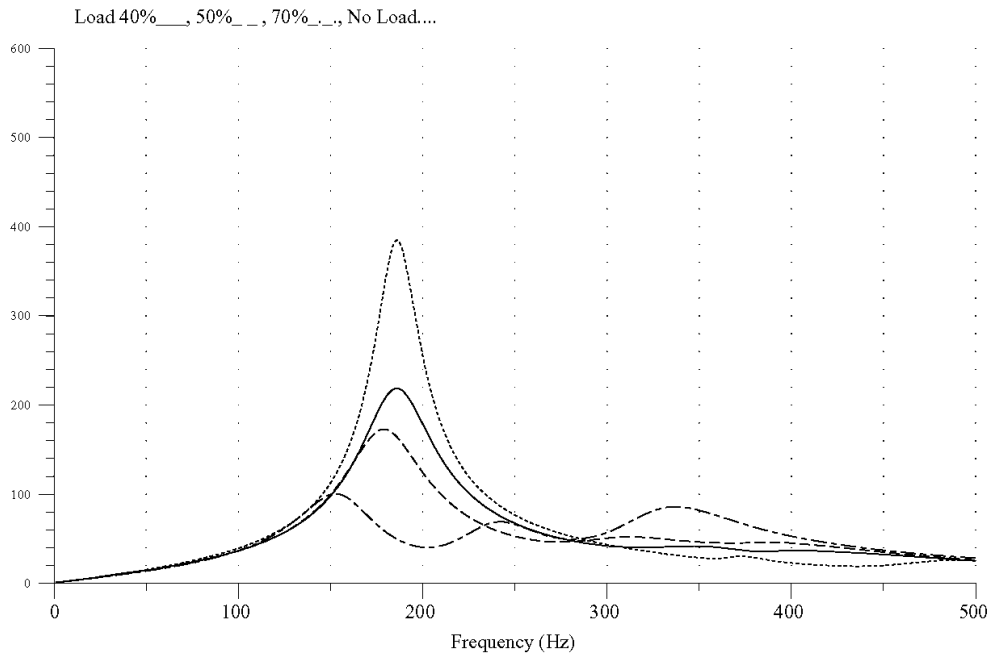
Norwalk 345 kV Positive-Sequence Driving Point Impedance (ohms)
Two Norwalk - Singer Cables Out



14-Dec-04 01:44:34 NR-SG240.PL4

Page 1

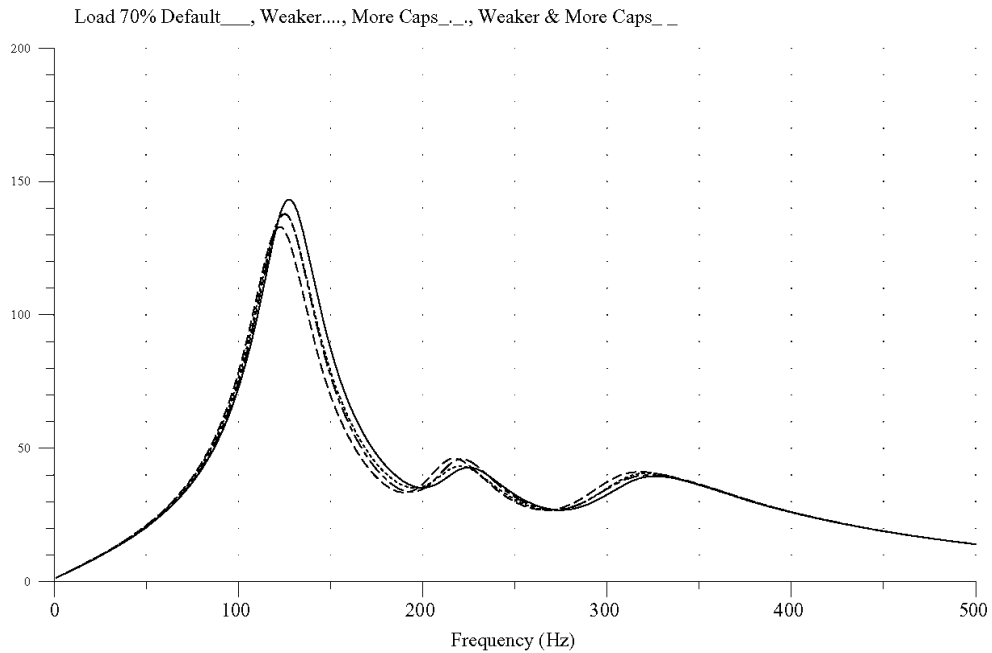
Norwalk 345 kV Positive-Sequence Driving Point Impedance (ohms)
Two Singer - East Devon Cables Out



14-Dec-04 02:06:03 SG-ED240.PL4

Page 1

Norwalk 345 kV Positive-Sequence Driving Point Impedance (ohms)
E. Devon - Beseck Line and Plumtree - Long Mountain Line Out

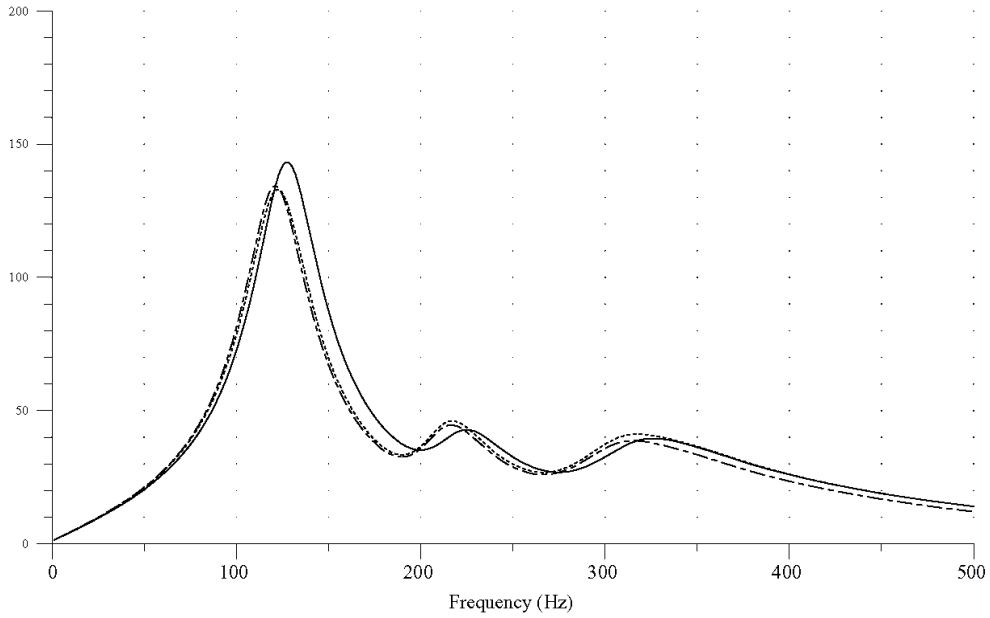


13-Dec-04 02:11:10 ED-BS_PL-LM70.PL4

Page 1

Norwalk 345 kV Positive-Sequence Driving Point Impedance (ohms)
E. Devon - Beseck Line and Plumtree - Long Mountain Line Out

Load 70% Default___, Weaker & More Caps...., Weaker, Caps, ImiCable___.

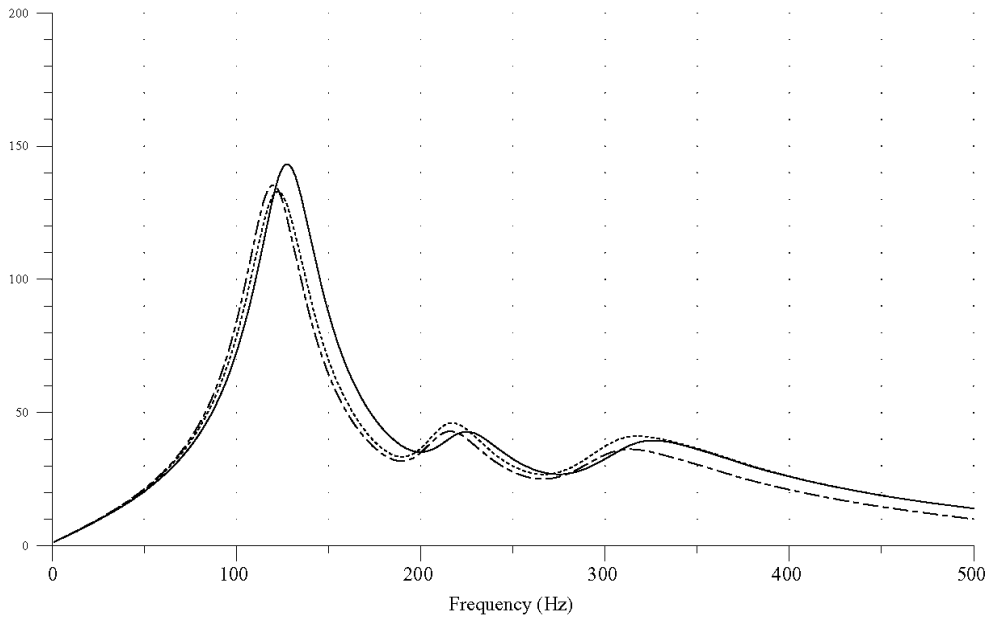


13-Dec-04 03:41:26 ED-BS_PL-LM70.PL4

Page 1

Norwalk 345 kV Positive-Sequence Driving Point Impedance (ohms)
E. Devon - Beseck Line and Plumtree - Long Mountain Line Out

Load 70% Default___, Weaker & More Caps...., Weaker, Caps, 2miCable___.

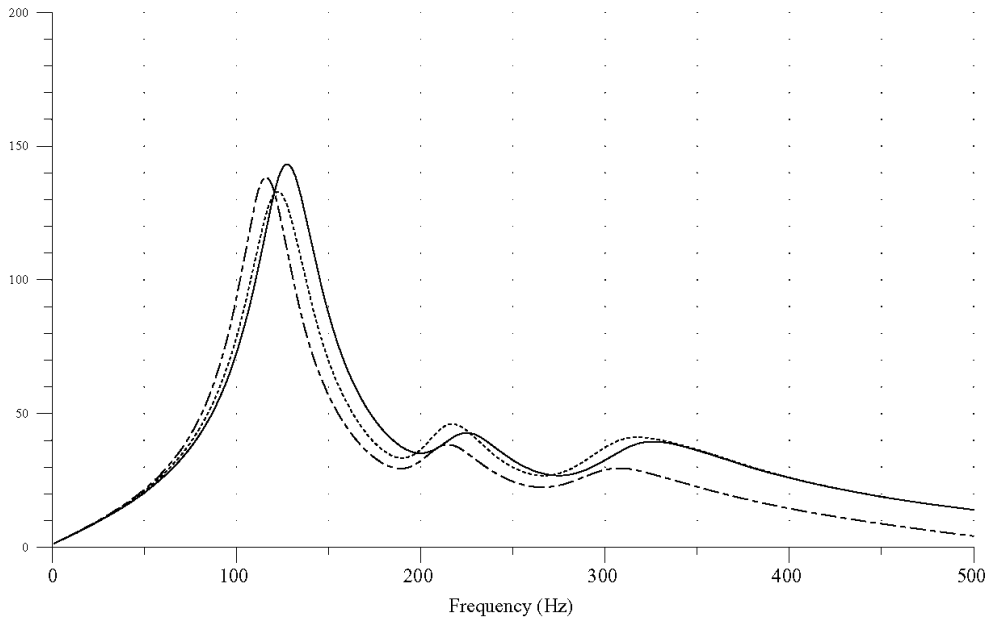


13-Dec-04 03:41:26 ED-BS_PL-LM70.PL4

Page 2

Norwalk 345 kV Positive-Sequence Driving Point Impedance (ohms)
E. Devon - Beseck Line and Plumtree - Long Mountain Line Out

Load 70% Default___, Weaker & More Caps...., Weaker, Caps, 5miCable___.



13-Dec-04 03:41:26 ED-BS_PL-LM70.PL4

Page 3