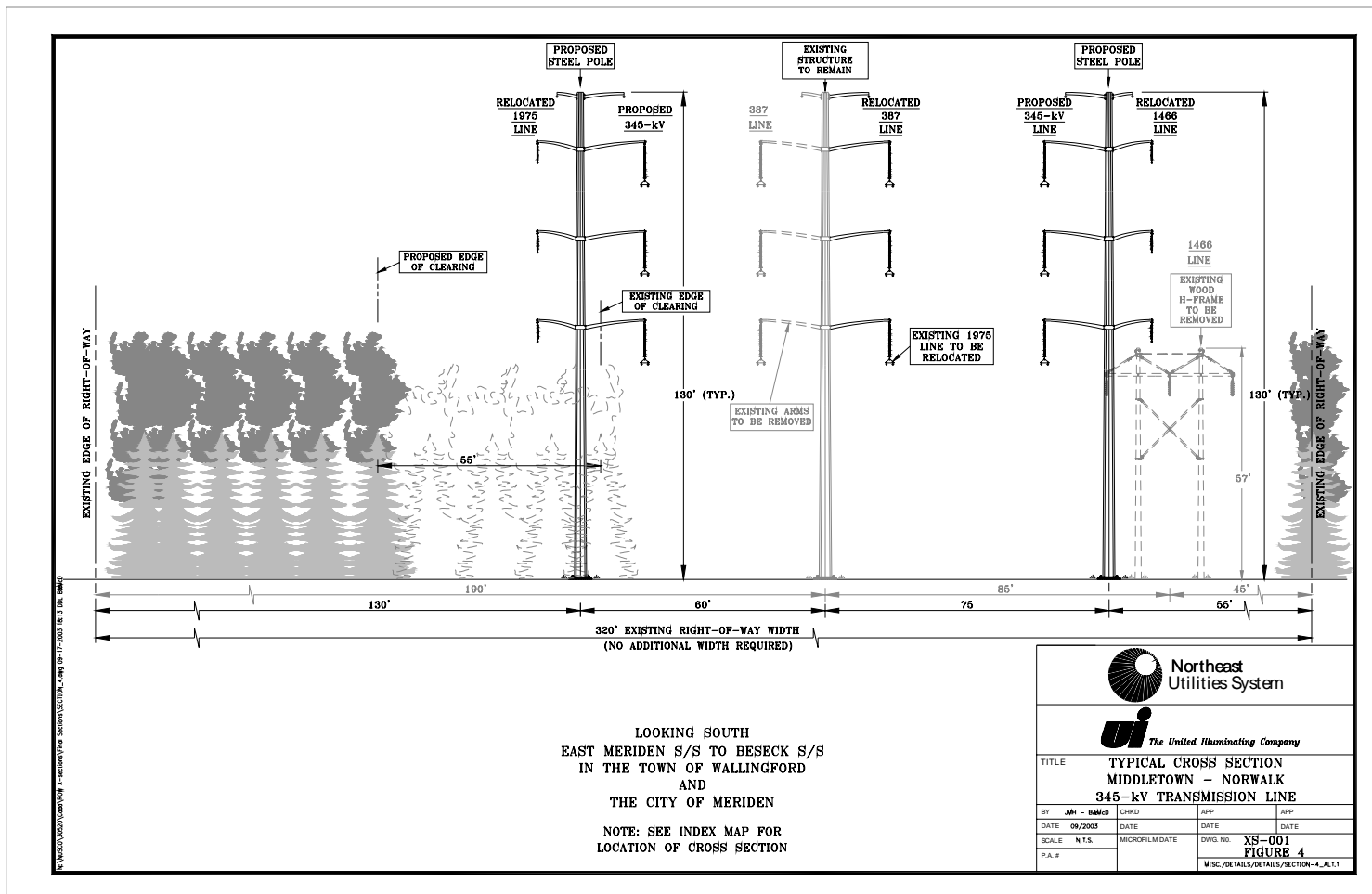


Cross Section 4 (15GW Case)

Typical Segment –East Meriden S/S to Beseck S/S in the Town of Wallingford

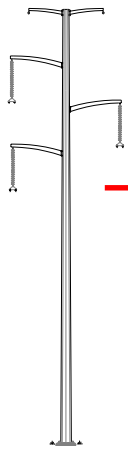
		Transmission ROW																											
Site Condition		150'	135'	120'	105'	90'	75'	60'	45'	30'	15'	S/E Edge	50'	25'	Center	25'	50'	N/W Edge		15'	30'	45'	60'	75'	90'	105'	120'	135'	150'
Existing Lines (For Reference)		2.0	2.2	2.4	2.6	2.9	3.2	3.6	4.1	4.6	5.3	6.1	27.0	43.6	68.6	74.2	61.5	11.9		10.1	8.5	7.2	6.1	5.3	4.6	4.1	3.6	3.2	2.9
0 Proposed Lines on Existing ROW (For Reference)		1.3	1.5	1.6	1.8	2.1	2.4	2.7	3.2	3.7	4.4	5.3	32.8	43.6	50.1	57.4	70.9	11.5		8.5	6.5	5.2	4.2	3.5	3.0	2.6	2.2	2.0	1.7



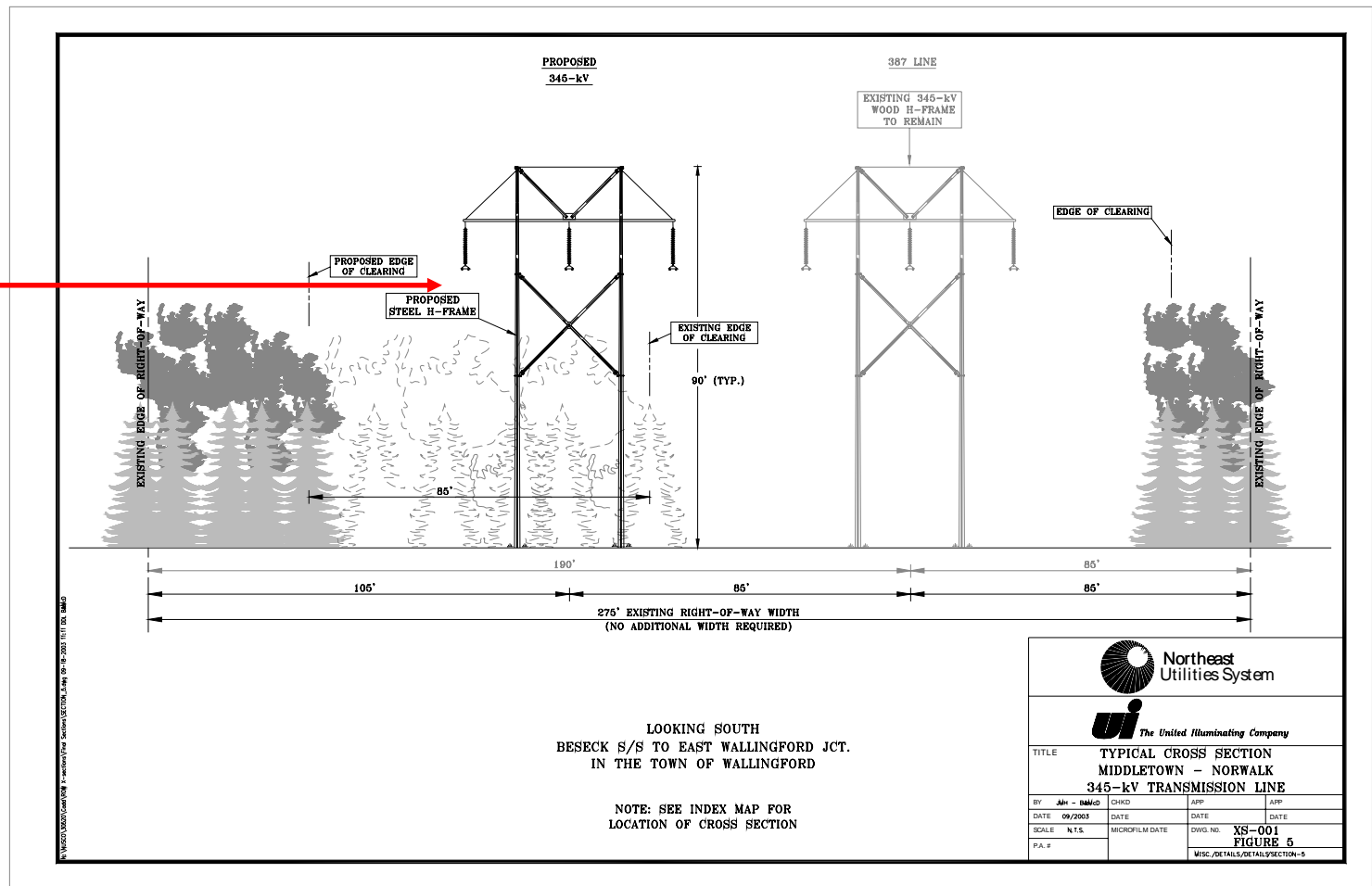
Cross Section 5 (15GW Case)

Typical Segment – Beseck S/S to East Wallingford Junction in the Town of Wallingford

		Transmission ROW																									
Site Condition	150'	135'	120'	105'	90'	75'	60'	45'	30'	15'	S/E Edge	50'	25'	Center	25'	50'	NW Edge	15'	30'	45'	60'	75'	90'	105'	120'	135'	150'
Existing Lines (For Reference)	1.6	1.8	2.0	2.2	2.4	2.7	3.0	3.4	3.9	4.5	5.2	17.5	29.5	56.1	102.0	123.7	24.7	18.2	13.9	10.9	8.8	7.3	6.1	5.2	4.5	3.9	3.4
2 345kV Delta	1.0	1.1	1.3	1.4	1.6	1.8	2.0	2.4	2.8	3.4	4.2	35.9	61.3	77.4	104.6	121.2	21.2	15.4	11.6	9.0	7.2	5.8	4.8	4.1	3.5	3.0	2.6



Proposed H-Frame structure would be replaced with Delta-monopole structure with a typical height of 108 feet. Applicant's exhibit 96.

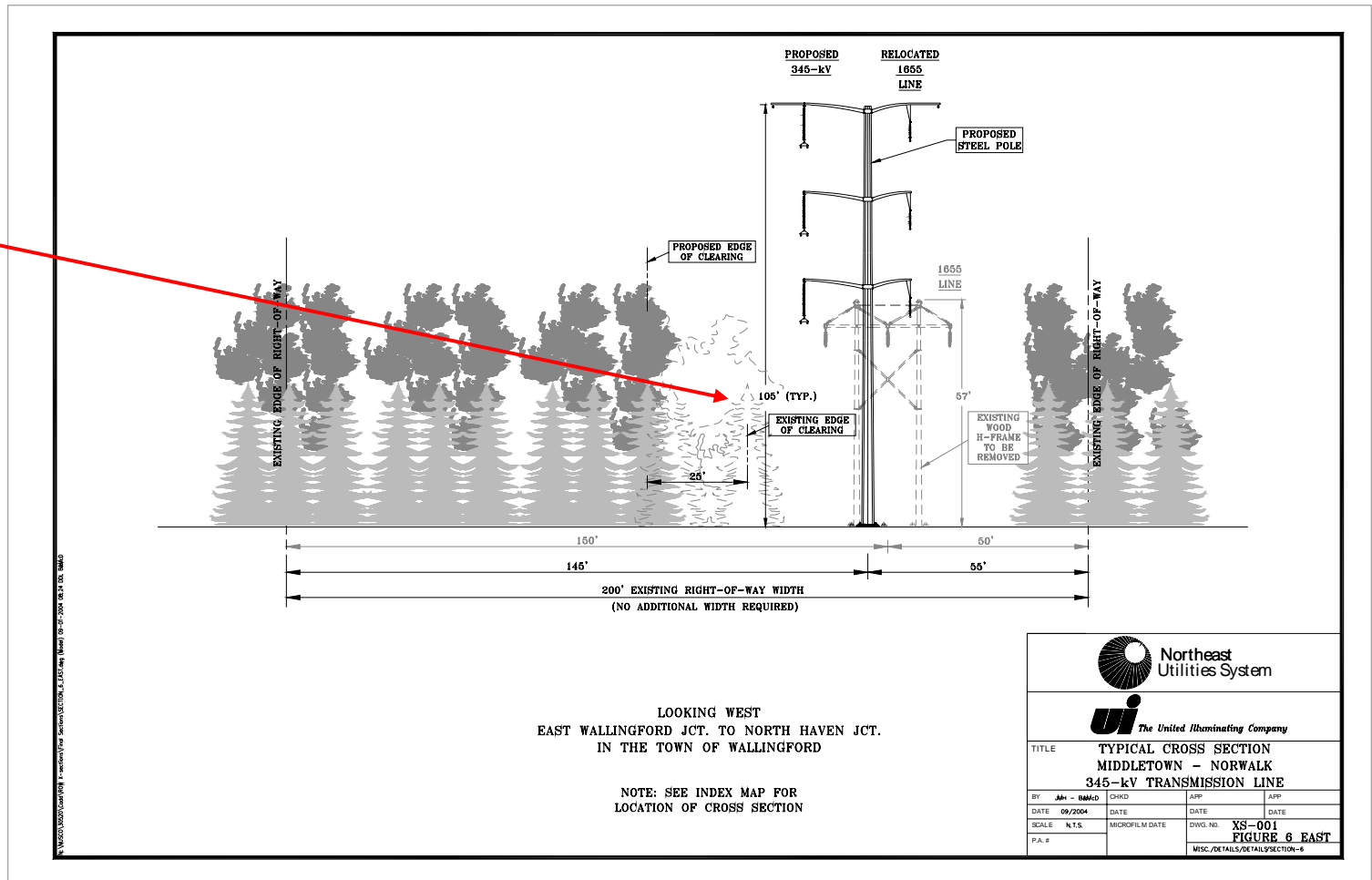


Cross Section 6 (15GW Case) East Segment

Typical Segment – East Wallingford Junction to North Haven Junction in the Town of Wallingford

		Transmission ROW																										
Site Condition		150'	135'	120'	105'	90'	75'	60'	45'	30'	15'	S/E Edge	50'	25'	Center	25'	50'	NW Edge	15'	30'	45'	60'	75'	90'	105'	120'	135'	150'
Existing Lines (For Reference)		0.0	0.0	0.0	0.1	0.1	0.1	0.1	0.1	0.1	0.1	0.2	0.3	0.6	1.2	2.7	4.0	1.2	0.8	0.5	0.4	0.3	0.2	0.2	0.1	0.1	0.1	0.1
2	As proposed additional 30' in height	1.3	1.4	1.6	1.7	2.0	2.2	2.5	2.9	3.3	3.9	4.5	8.2	11.1	14.6	16.8	15.9	9.4	7.8	6.5	5.4	4.6	3.9	3.4	2.9	2.5	2.2	2.0

Note: Structure height would be increased by 30 feet, typical structure height would be 135 feet.



Cross Section 6 (15GW Case) West Segment

Typical Segment – North Haven Junction to Wallingford Junction in the Town of Wallingford

Site Condition	Transmission ROW																											
	150'	135'	120'	105'	90'	75'	60'	45'	30'	15'	S/E Edge	50'	25'	Center	25'	50'	NW Edge	15'	30'	45'	60'	75'	90'	105'	120'	135'	150'	
Existing Lines (For Reference)	0.1	0.1	0.1	0.1	0.1	0.1	0.2	0.2	0.2	0.3	0.3	0.7	1.2	2.4	5.5	8.2	2.4	1.5	1.1	0.8	0.6	0.5	0.4	0.3	0.2	0.2	0.2	
0 Proposed Lines on Existing ROW (For Reference)	1.3	1.4	1.6	1.7	2.0	2.3	2.6	3.0	3.6	4.2	5.1	10.9	17.5	29.5	43.6	35.8	12.4	9.5	7.5	6.0	4.9	4.1	3.5	3.0	2.5	2.2	1.9	

