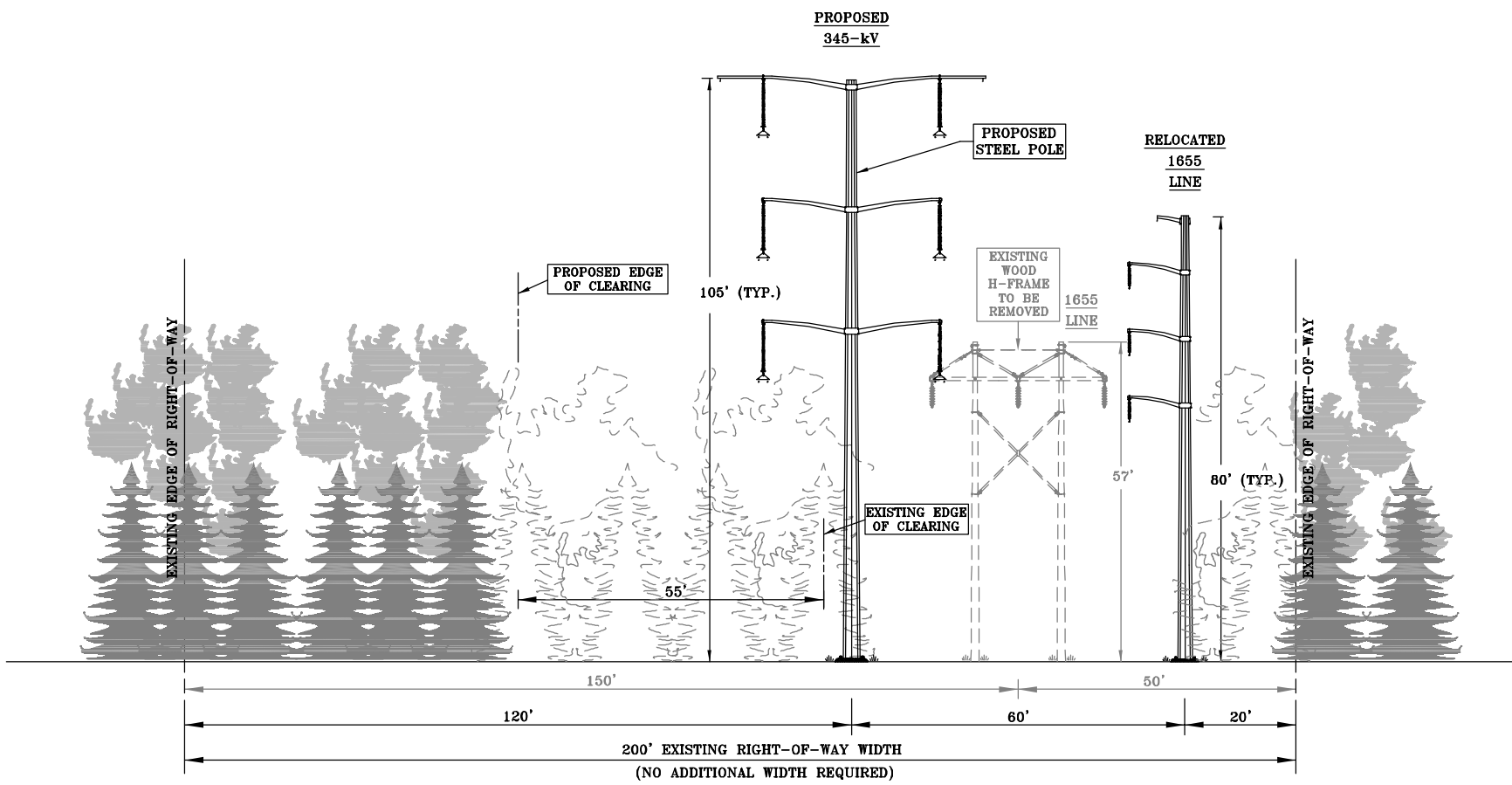




H:\NURS03\30020\Cadd\POW\4-revision\Wind Section\SECTION\_6\_EAST\_LEMF.dwg (Model) 11-23-2004 10:35 DDL BMMcD



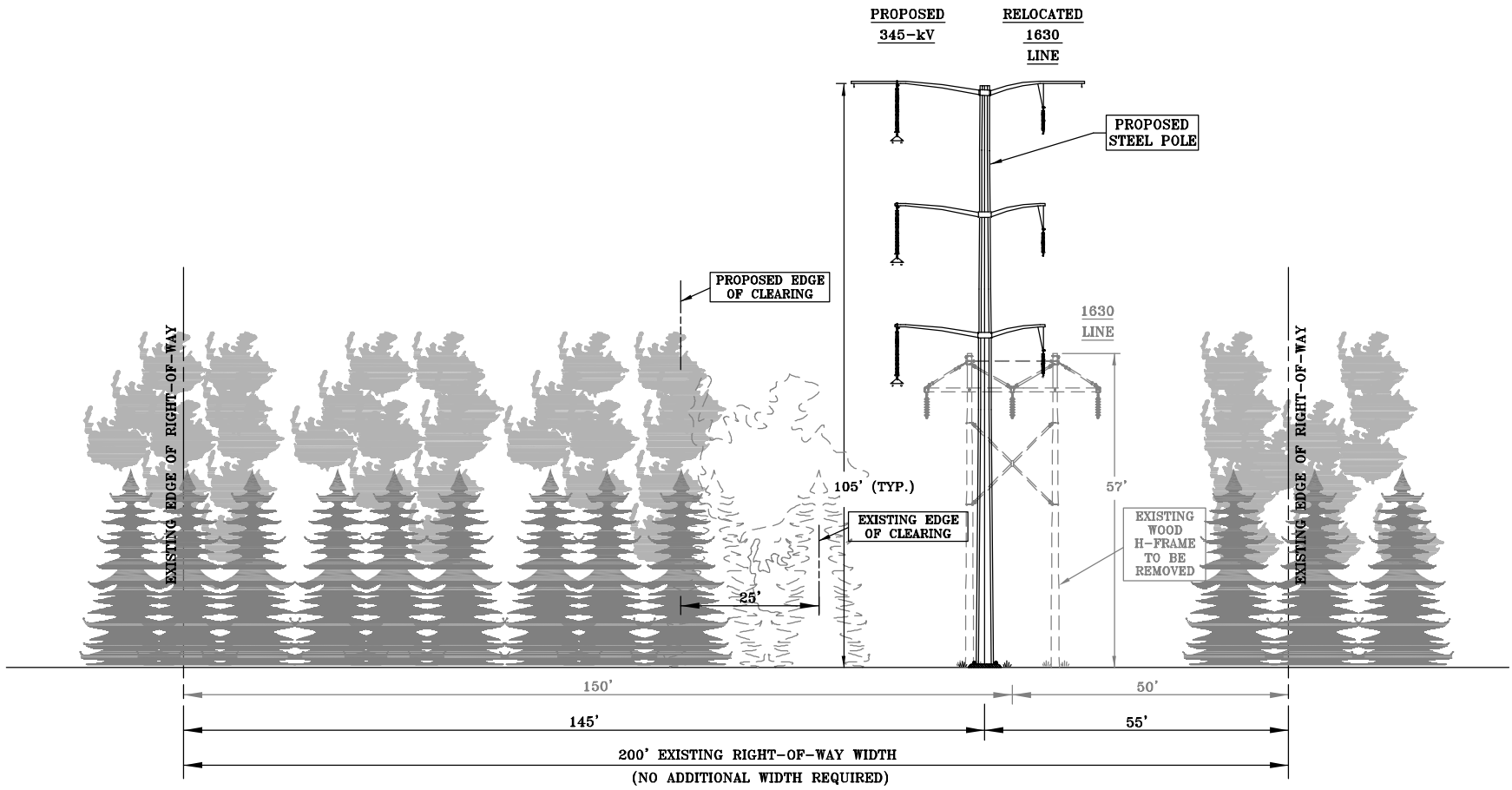
LOW MAGNETIC FIELD  
DESIGN OPTION #4

LOOKING WEST  
EAST WALLINGFORD JCT. TO NORTH HAVEN JCT.  
IN THE TOWN OF WALLINGFORD

NOTE: SEE INDEX MAP FOR  
LOCATION OF CROSS SECTION



 Northeast Utilities System			
			
<b>TITLE</b> TYPICAL CROSS SECTION MIDDLETOWN - NORWALK 345-kV TRANSMISSION LINE			
BY	JMH - BMMcD	CHKD	APP
DATE	11/2004	DATE	DATE
SCALE	N.T.S.	MICROFILM DATE	DWG. No. XS-001
P.A. #			FIGURE 6 EAST LEMF

H:\NURS03\300203\Code\POW 4-revision\Wind Section\SECTION 6 WEST.dwg (Model) 11-23-2004 10:36:01 DLB BMM

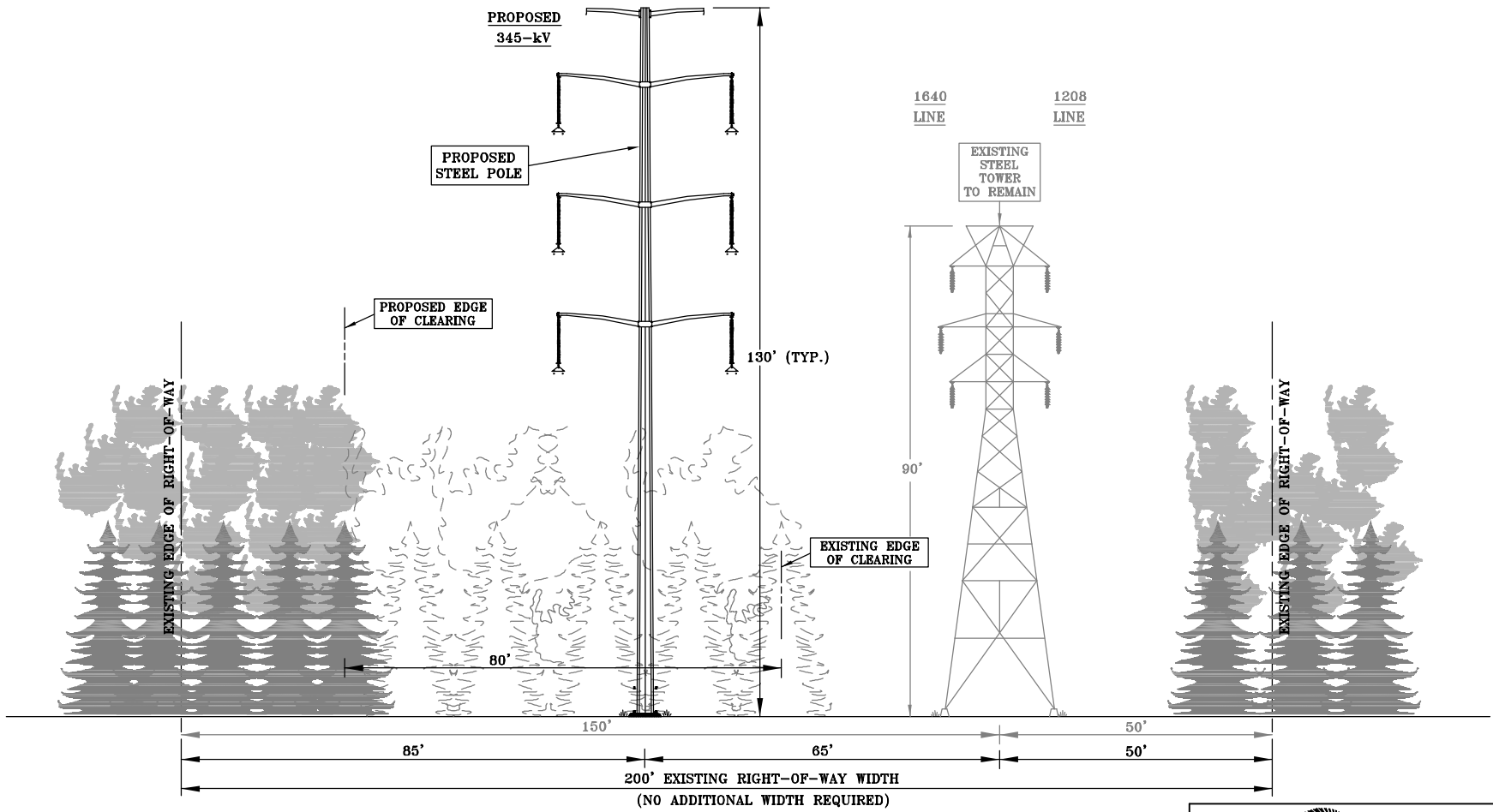


LOOKING WEST  
 NORTH HAVEN JCT. TO WALLINGFORD JCT.  
 IN THE TOWN OF WALLINGFORD

NOTE: SEE INDEX MAP FOR  
 LOCATION OF CROSS SECTION

 Northeast Utilities System			
			
<b>TITLE</b> TYPICAL CROSS SECTION MIDDLETOWN - NORWALK 345-kV TRANSMISSION LINE			
BY	JMH - BMMCD	CHKD	APP
DATE	11/2004	DATE	DATE
SCALE	N.T.S.	MICROFILM DATE	DWG. NO. XS-001
P.A. #			FIGURE 6 WEST

C:\NURS03\300203\Code\POW 4-section\Wind Section\SECTION\_7A\_LEMF.dwg (16449) 12-14-2004 16:00 DDL BMMCD



LOW MAGNETIC FIELD  
DESIGN OPTION #4

LOOKING WEST  
WALLINGFORD JCT. TO CHESHIRE TOWN LINE  
IN THE TOWN OF WALLINGFORD

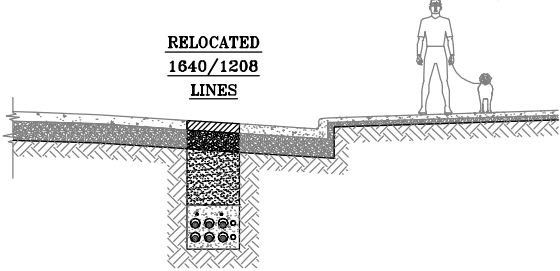
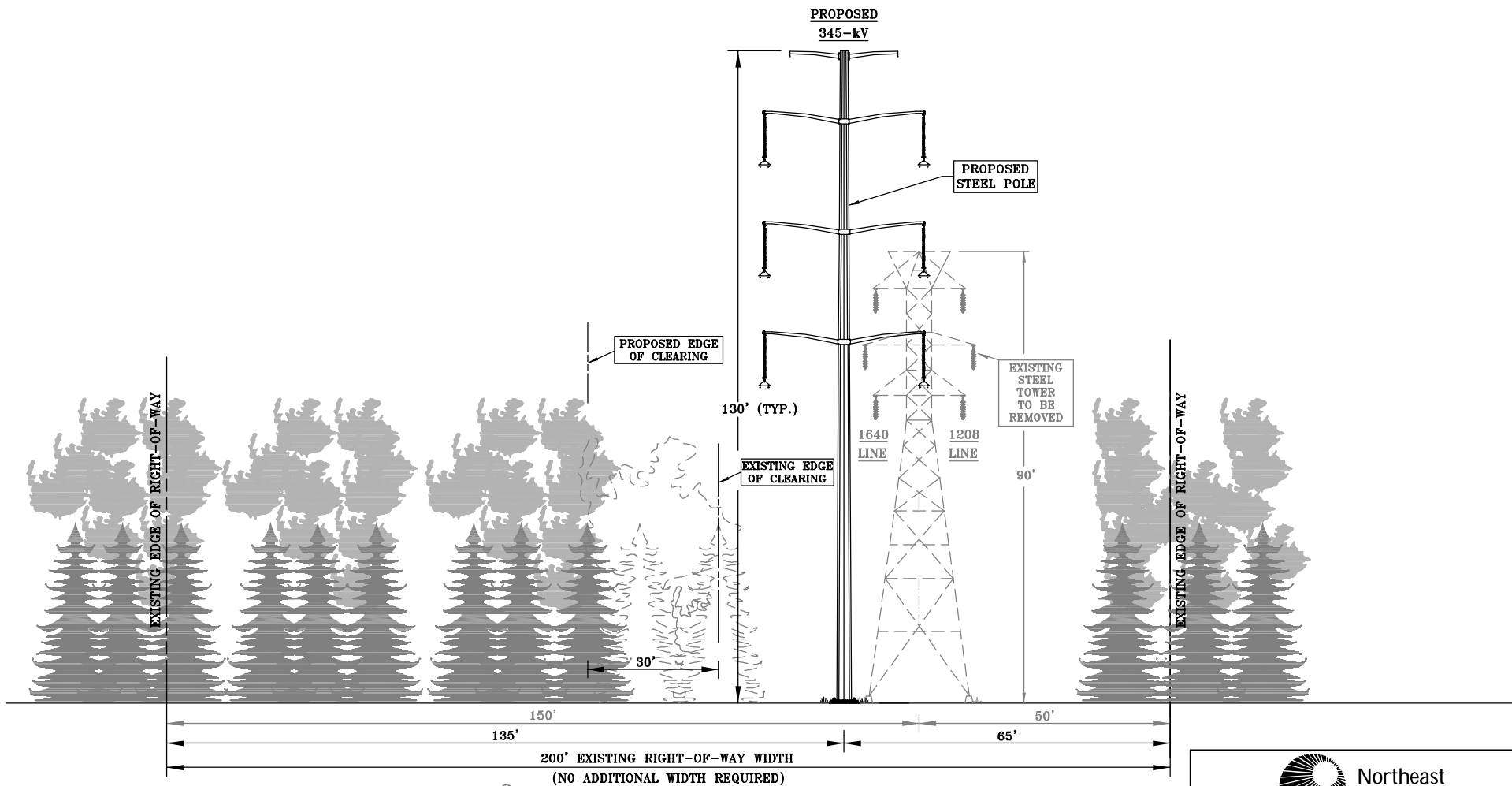
NOTE: SEE INDEX MAP FOR  
LOCATION OF CROSS SECTION



TITLE  
TYPICAL CROSS SECTION  
MIDDLETOWN - NORWALK  
345-kV TRANSMISSION LINE

BY	JMH - BMMCD	CHKD	APP	APP
DATE	12/2004	DATE	DATE	DATE
SCALE	N.T.S.	MICROFILM DATE	DWG. No. XS-001	
P.A. #			FIGURE 7A LEMF	



RE: N:\MSD\30020\Code\POW 4-revision\Wind Section\SECTION\_7B\_LDM.dwg (Week) 11-22-2004 10:57 DDL BMM40

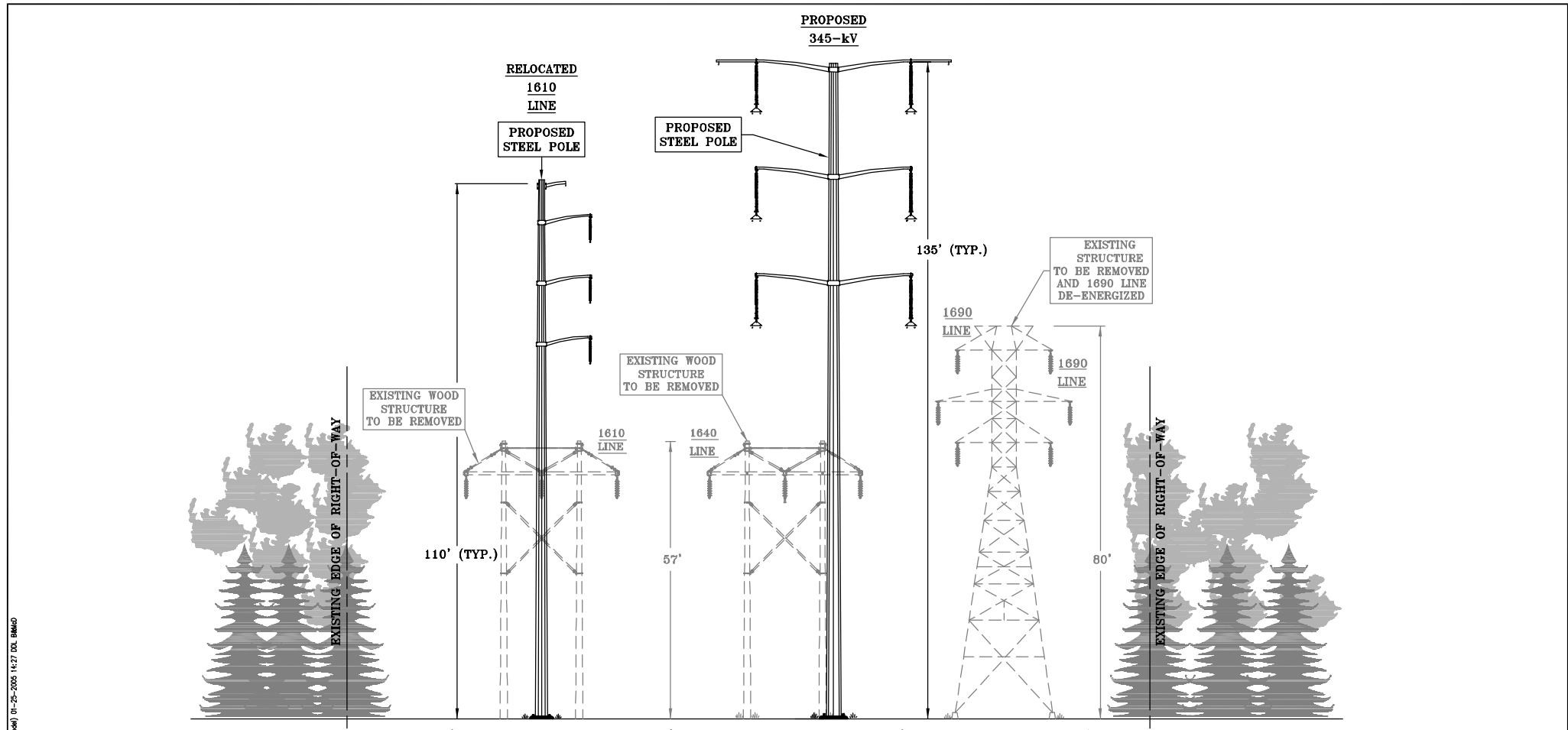


UNDER STREET 115-kV XLPE CABLE

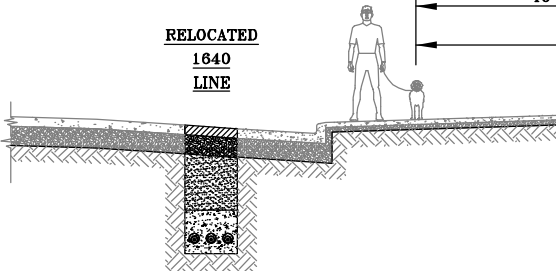
"SUPPORTED CHANGE"  
 LOOKING WEST  
 WALLINGFORD TOWN LINE TO COOK HILL JCT.  
 IN THE TOWN OF CHESHIRE

NOTE: SEE INDEX MAP FOR LOCATION OF CROSS SECTION

 Northeast Utilities System			
 The United Illuminating Company			
TITLE <b>TYPICAL CROSS SECTION          MIDDLETOWN - NORWALK          345-kV TRANSMISSION LINE</b>			
BY	JMH - BMMcd	CHKD	APP
DATE	11/2004	DATE	DATE
SCALE	N.T.S.	MICROFILM DATE	DWG. No. XS-001
P.A. #			<b>FIGURE 7B LEMF</b>



RELOCATED  
1640  
LINE



UNDER STREET 115-kV XLPE CABLE

165' EXISTING RIGHT-OF-WAY WIDTH  
(NO ADDITIONAL WIDTH REQUIRED)

"SUPPORTED CHANGE"

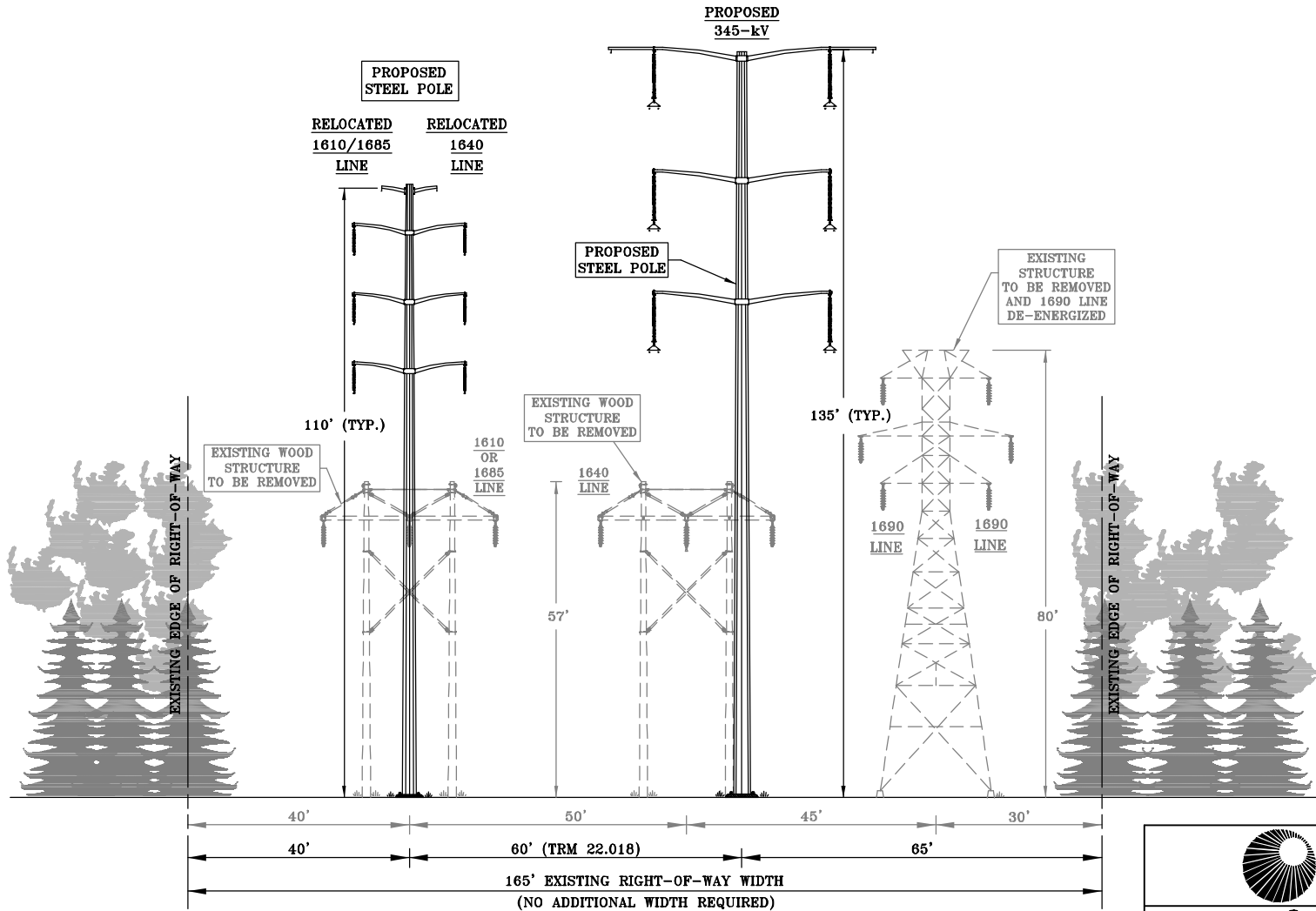
LOOKING SOUTH  
COOK HILL JCT. TO HAMDEN TOWN LINE  
IN THE TOWN OF CHESHIRE

NOTE: SEE INDEX MAP FOR  
LOCATION OF CROSS SECTION



TITLE  
TYPICAL CROSS SECTION  
MIDDLETOWN - NORWALK  
345-kV TRANSMISSION LINE

BY	JMH - BMMCD	CHKD	APP	APP
DATE	01/2005	DATE	DATE	DATE
SCALE	N.T.S.	MICROFILM DATE	DWG. No. XS-001	
P.A. #			FIGURE 8A LEMF +30	



NOTE: TRM 22.018 ALLOWS FOR THE PLACEMENT OF ADJACENT STRUCTURES CLOSER TOGETHER BUT LIMITS THE AMOUNT OF STAGGER THAT CAN OCCUR.

LOOKING SOUTH  
 HAMDEN TOWN LINE TO EAST DEVON S/S  
 IN THE TOWNS OF HAMDEN,  
 BETHANY, WOODBRIDGE AND ORANGE  
 AND  
 THE CITIES OF WEST HAVEN AND MILFORD

NOTE: SEE INDEX MAP FOR  
 LOCATION OF CROSS SECTION



TITLE  
**TYPICAL CROSS SECTION  
 MIDDLETOWN - NORWALK  
 345-kV TRANSMISSION LINE**

BY JMH - BMMcd	CHKD	APP	APP
DATE 01/2005	DATE	DATE	DATE
SCALE N.T.S.	MICROFILM DATE	DWG. No. XS-001	
P.A. #		FIGURE 8B LEMF +30	

H:\NURS03\300203\Code\POW 14-revision\Wind Section\SECTION\_8B\_LDW\_P30.dwg (Mead) 01-25-2005 14:28 DDJ BMMcd