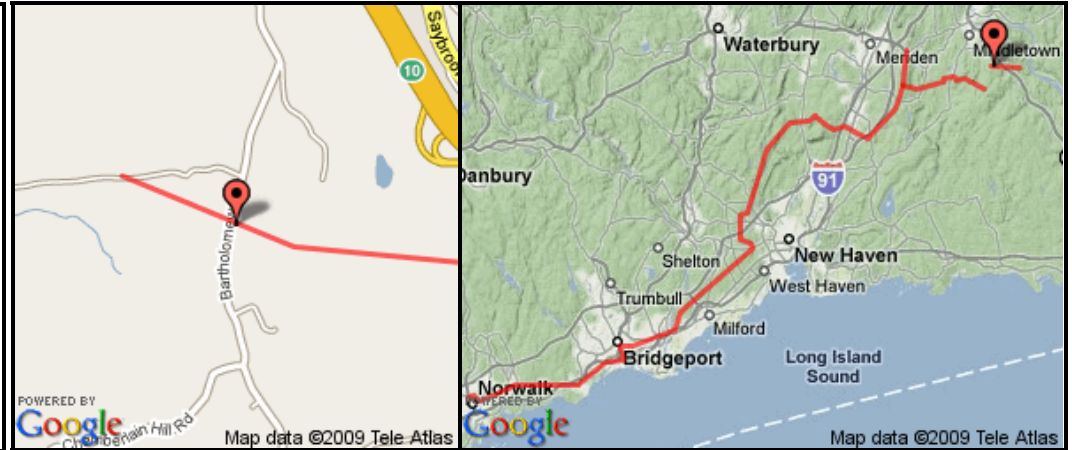


Monitoring Site 2 Bartholomew Road

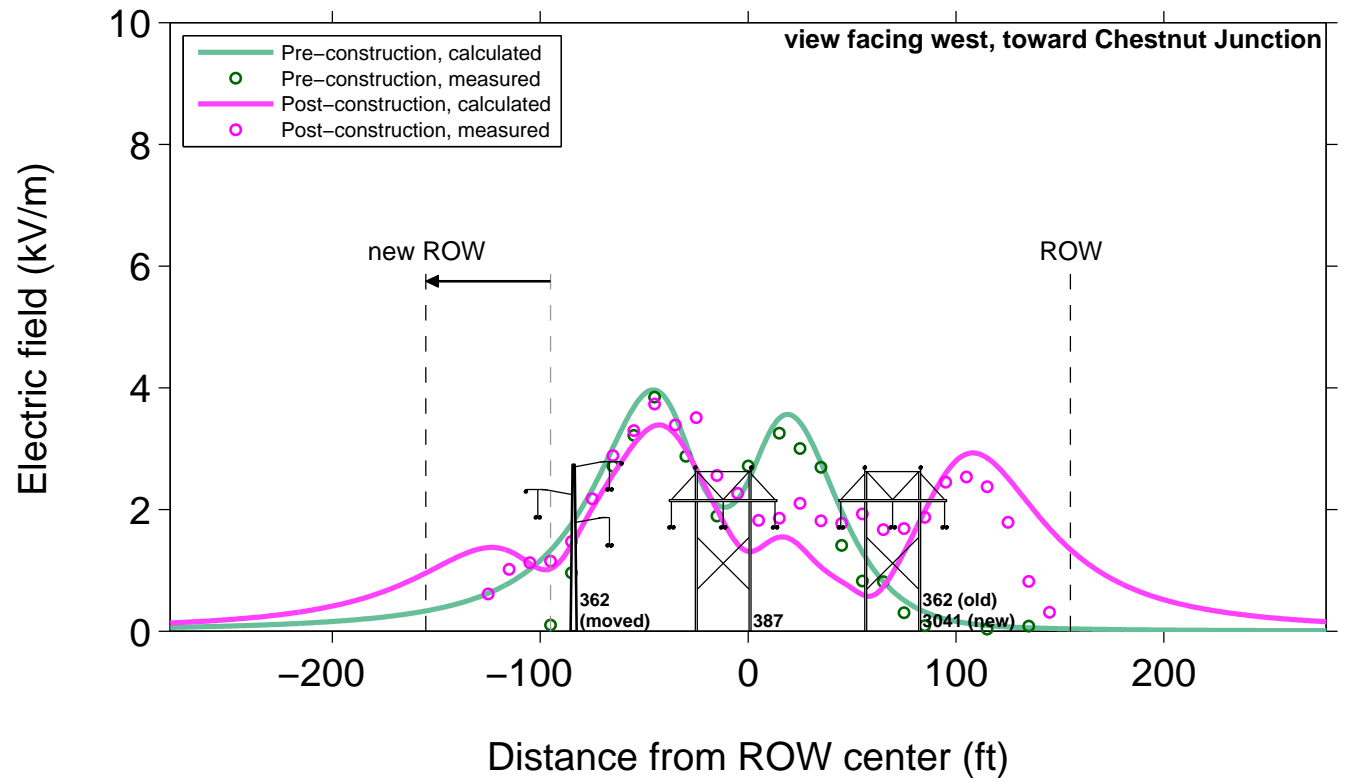
Segment: 1A Middletown
 Reference Section: 1 LEMF
 ROW width: 310 ft (250 ft preconstruction)
 Lat/Long meas. start: 72.61036W 41.50977N
 Lat/Long meas. end: 72.61007W 41.51044N
 Preconstruction measurement time: 11-Jan-2007 10:56:00
 Postconstruction measurement time: 12-May-2009 09:34:00
 Notes: 362 line de-energized during pre-construction readings



LINE AND LOADING DATA

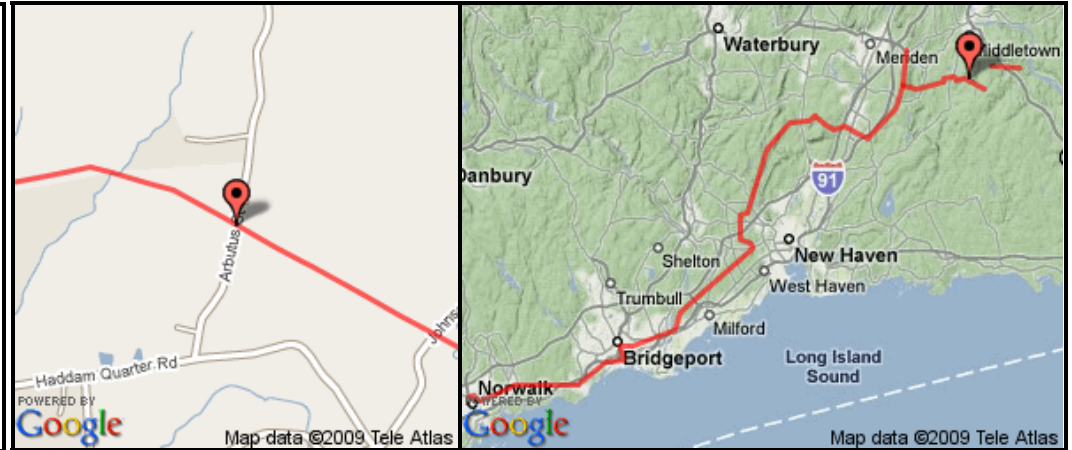
	Line	Line Voltage (kV)	Bottom phase height (ft)
pre-construction	387	345	40.0
	362	345	45.0
	-	-	-
	-	-	-
	-	-	-
	-	-	-
post-construction	387	345	40.0
	3041	345	45.0
	362	345	45.0
	-	-	-
	-	-	-
	-	-	-

**Electric field, Monitoring Site 2
Bartholomew Road**



Monitoring Site 3 Arbutus Street

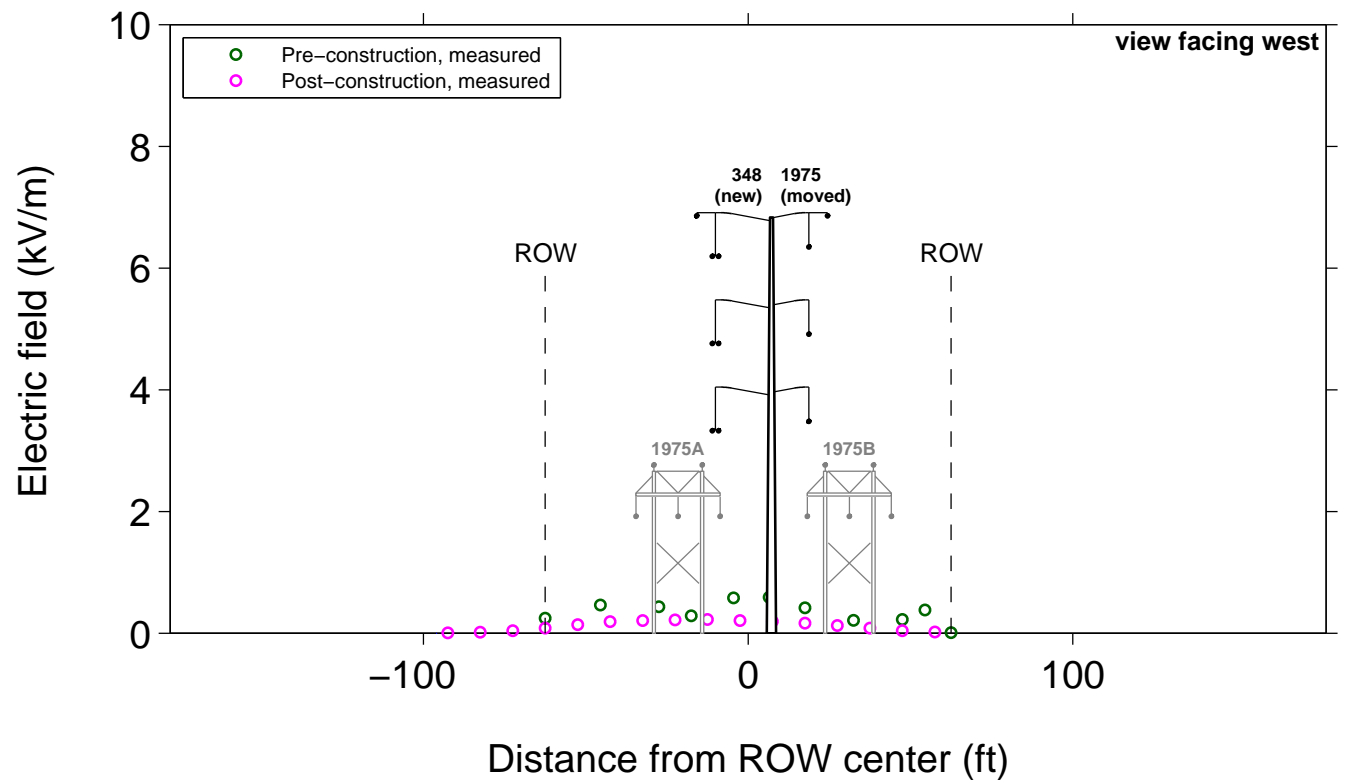
Segment: 1A Durham
 Reference Section: 2 LEMF
 ROW width: 125 ft (125 ft preconstruction)
 Lat/Long meas. start: 72.64907W 41.49546N
 Lat/Long meas. end: 72.64893W 41.49581N
 Preconstruction measurement time: 20-Nov-2006 14:55:00
 Postconstruction measurement time: 12-May-2009 10:46:00
 Notes: proximity to residences



LINE AND LOADING DATA

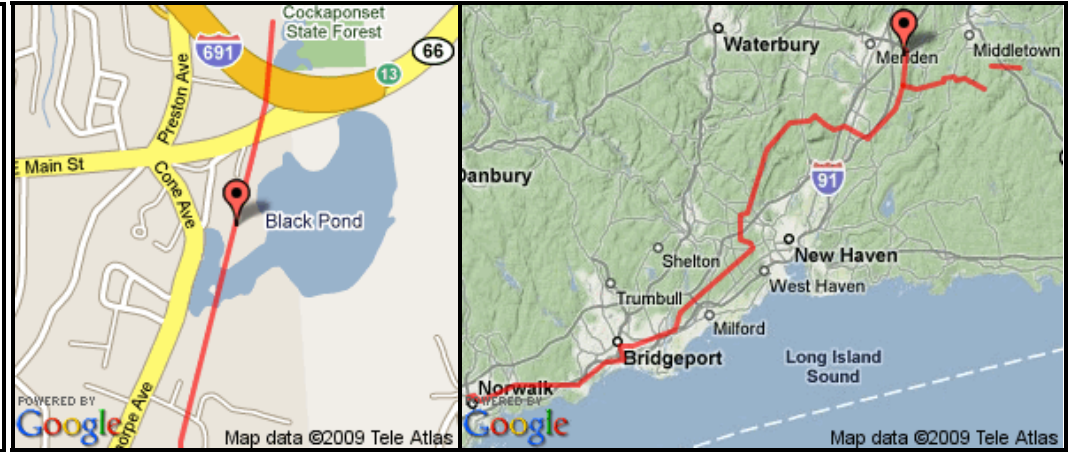
	Line	Line Voltage (kV)	Bottom phase height (ft)
pre-construction	1975A	115	35.0
	1975B	115	35.0
	-	-	-
	-	-	-
	-	-	-
	-	-	-
post-construction	1975	115	117.0
	348	345	116.0
	-	-	-
	-	-	-
	-	-	-
	-	-	-

**Electric field, Monitoring Site 3
Arbutus Street**



Monitoring Site 6 Meriden PBA

Segment: 1A Meriden
 Reference Section: 3 LEMFB
 ROW width: 275 ft (275 ft preconstruction)
 Lat/Long meas. start: 72.74929W 41.52330N
 Lat/Long meas. end: 72.75003W 41.52356N
 Preconstruction measurement time: 20-Nov-2006 13:02:00
 Postconstruction measurement time: 12-May-2009 12:38:00
 Notes: proximity to Meriden Police Benevolent Association meeting hall

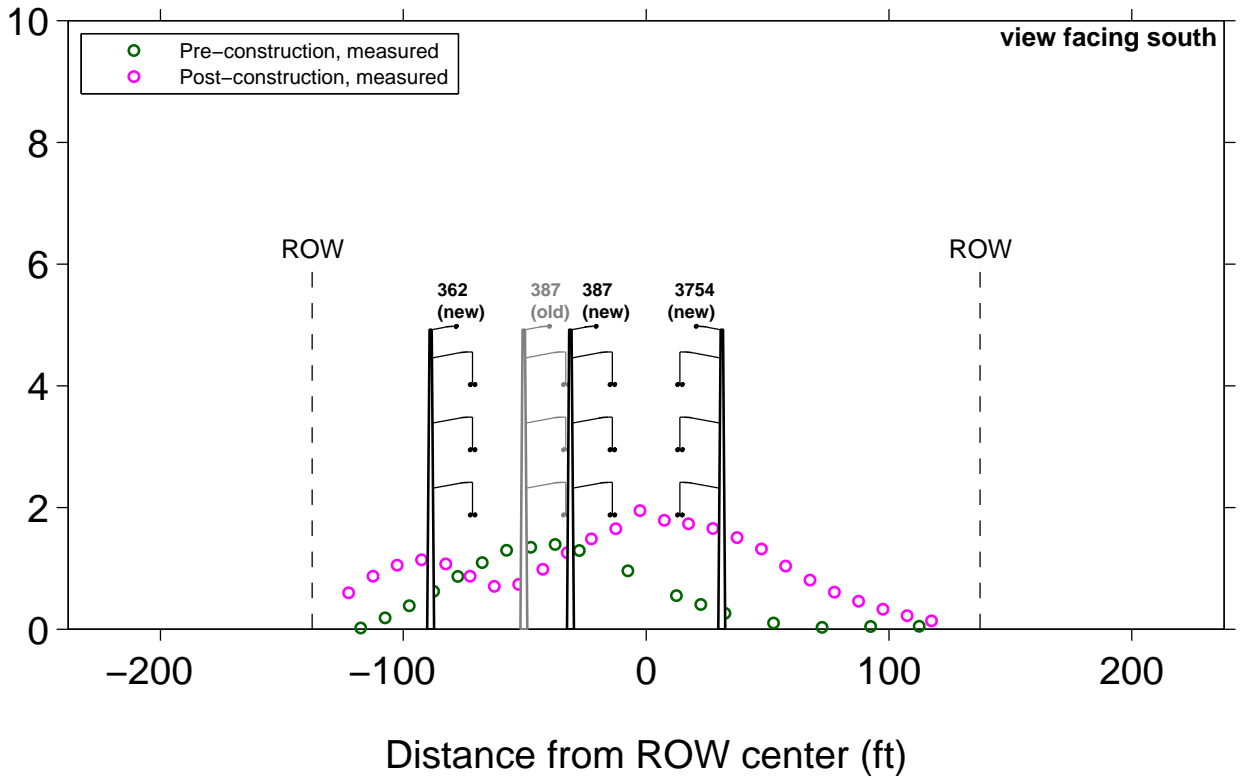


**Electric field, Monitoring Site 6
Meriden PBA**

LINE AND LOADING DATA

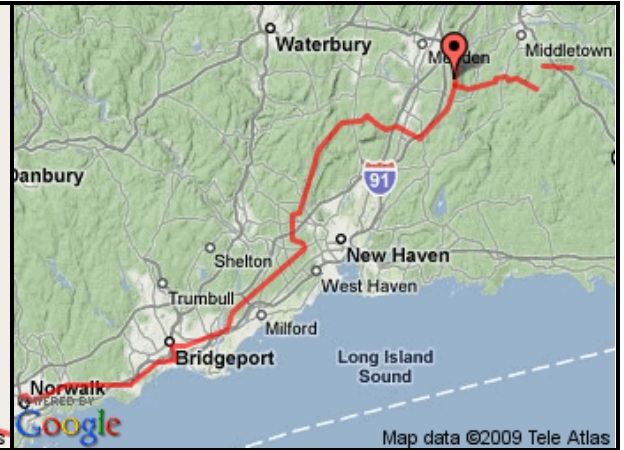
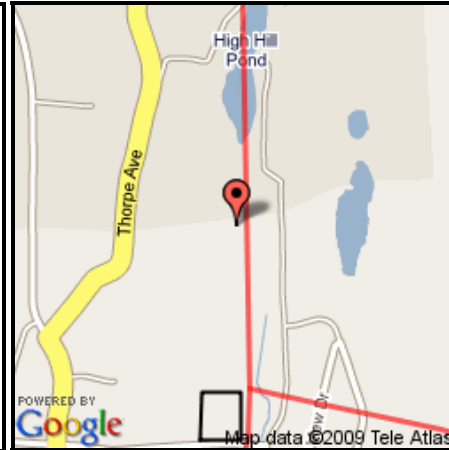
	Line	Line Voltage (kV)	Bottom phase height (ft)
pre-construction	387	345	57.0
	-	-	-
	-	-	-
	-	-	-
	-	-	-
	-	-	-
post-construction	387	345	64.0
	362	345	57.0
	3754	345	65.0
	-	-	-
	-	-	-
	-	-	-

Electric field (kV/m)



Monitoring Site 8 Gravel Operation

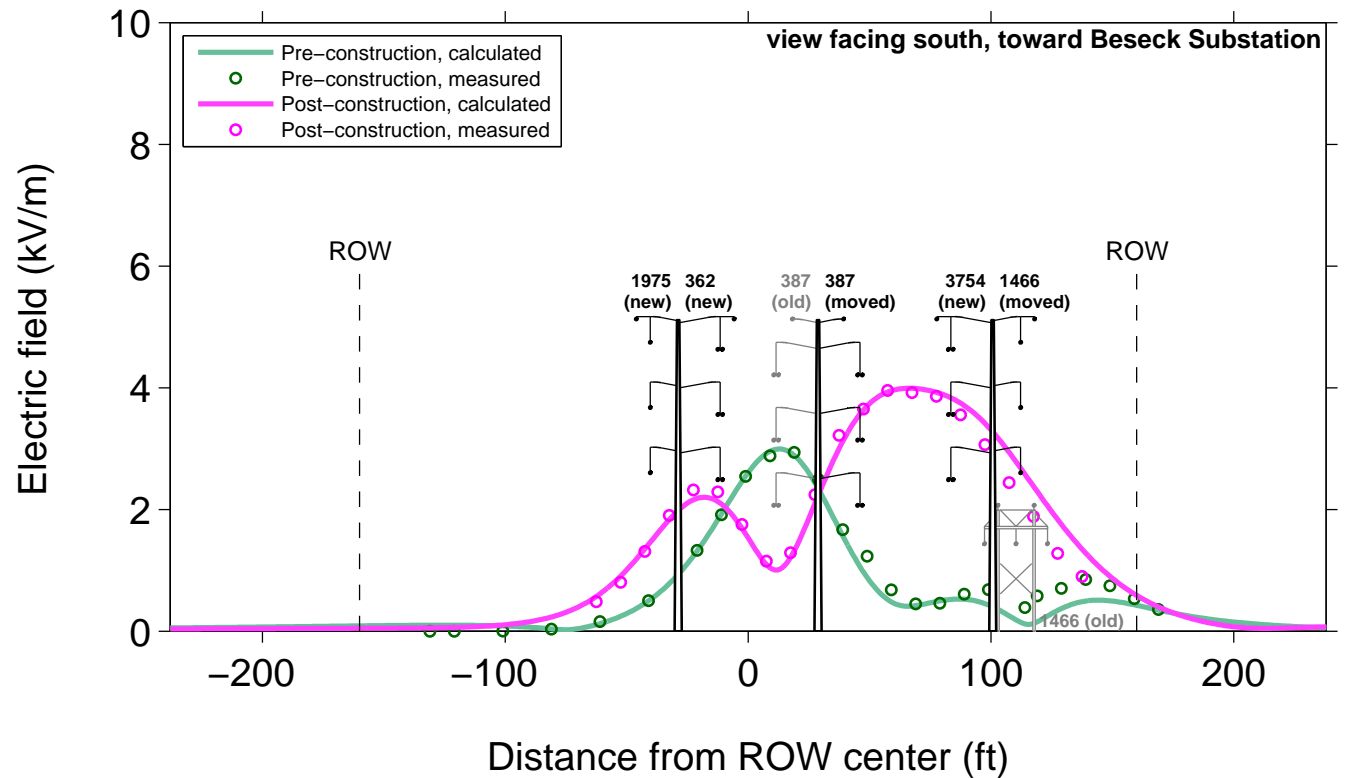
Segment: 1A Wallingford
 Reference Section: 4
 ROW width: 320 ft (320 ft preconstruction)
 Lat/Long meas. start: 72.75376W 41.49599N
 Lat/Long meas. end: 72.75482W 41.49596N
 Preconstruction measurement time: 20-Nov-2006 11:14:00
 Postconstruction measurement time: 12-May-2009 13:56:00
 Notes: proximity to Mountain Mist Day Camp



LINE AND LOADING DATA

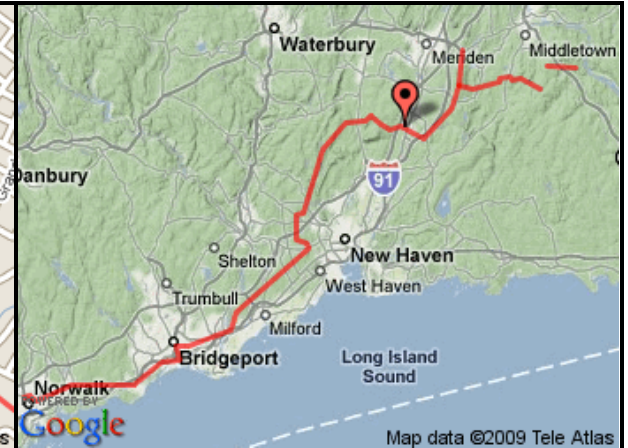
	Line	Line Voltage (kV)	Bottom phase height (ft)
pre-construction	387	345	45.0
	1975	115	50.0
	1466	115	45.5
	-	-	-
	-	-	-
	-	-	-
post-construction	1975	115	55.0
	1466	115	54.0
	387	345	45.0
	362	345	46.0
	3754	345	51.0
	-	-	-

Electric field, Monitoring Site 8 Gravel Operation



Monitoring Site 13 South Cherry Street

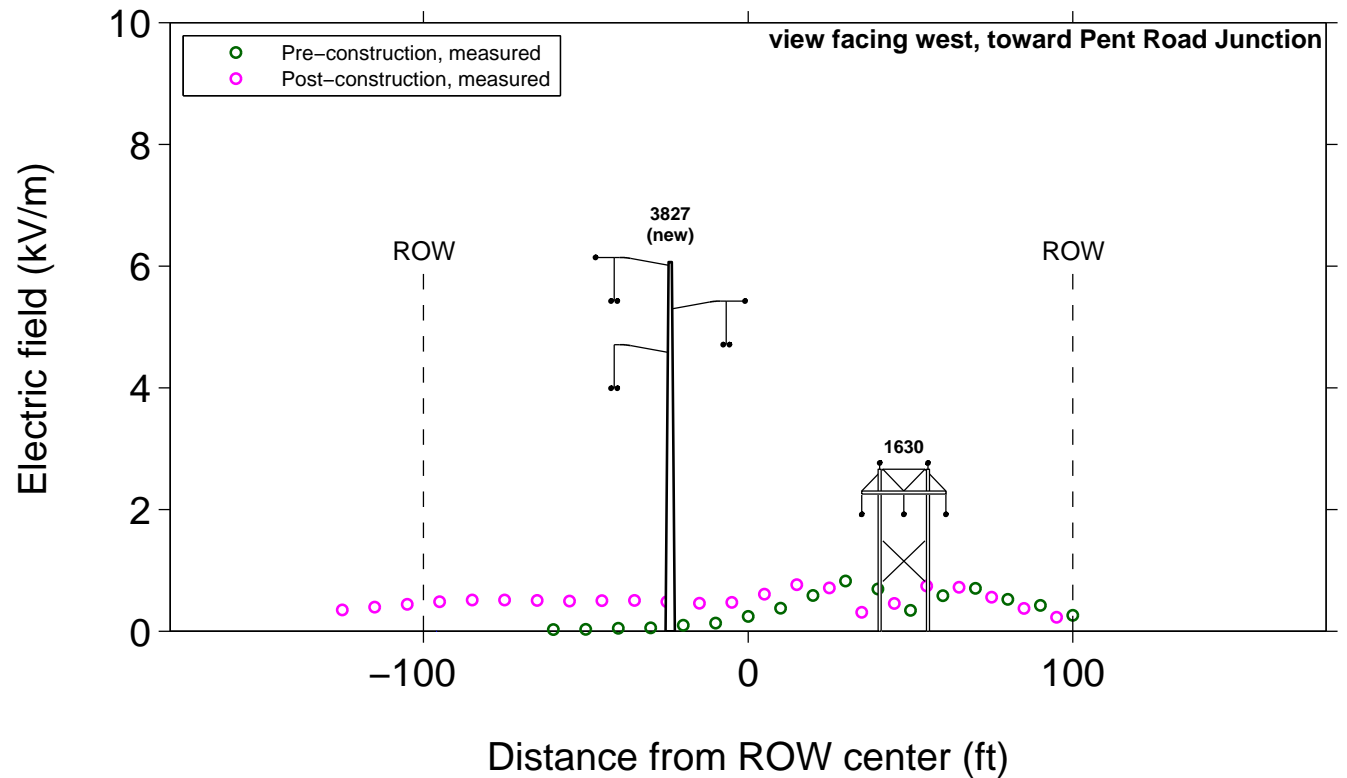
Segment: 2A Wallingford
 Reference Section: 6 WEST
 ROW width: 200 ft (200 ft preconstruction)
 Lat/Long meas. start: 72.83667W 41.43949N
 Lat/Long meas. end: 72.83623W 41.44012N
 Preconstruction measurement time: 10-Nov-2006 16:51:00
 Postconstruction measurement time: 13-May-2009 08:41:00
 Notes:



LINE AND LOADING DATA

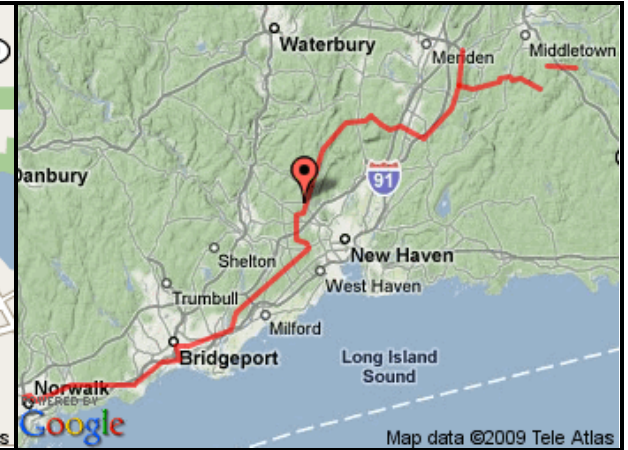
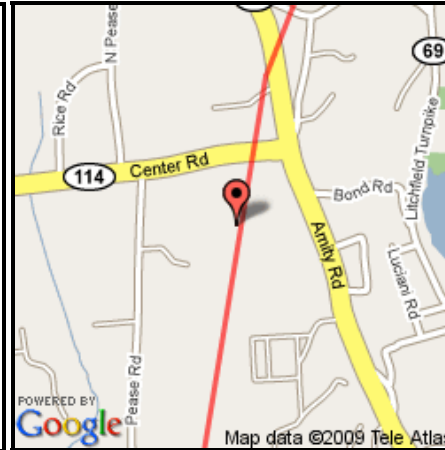
	Line	Line Voltage (kV)	Bottom phase height (ft)
pre-construction	1630	115	35.0
	-	-	-
	-	-	-
	-	-	-
	-	-	-
	-	-	-
post-construction	3827	345	94.6
	1630	115	34.0
	-	-	-
	-	-	-
	-	-	-

**Electric field, Monitoring Site 13
South Cherry Street**



Monitoring Site 20 JCC Parking Lot

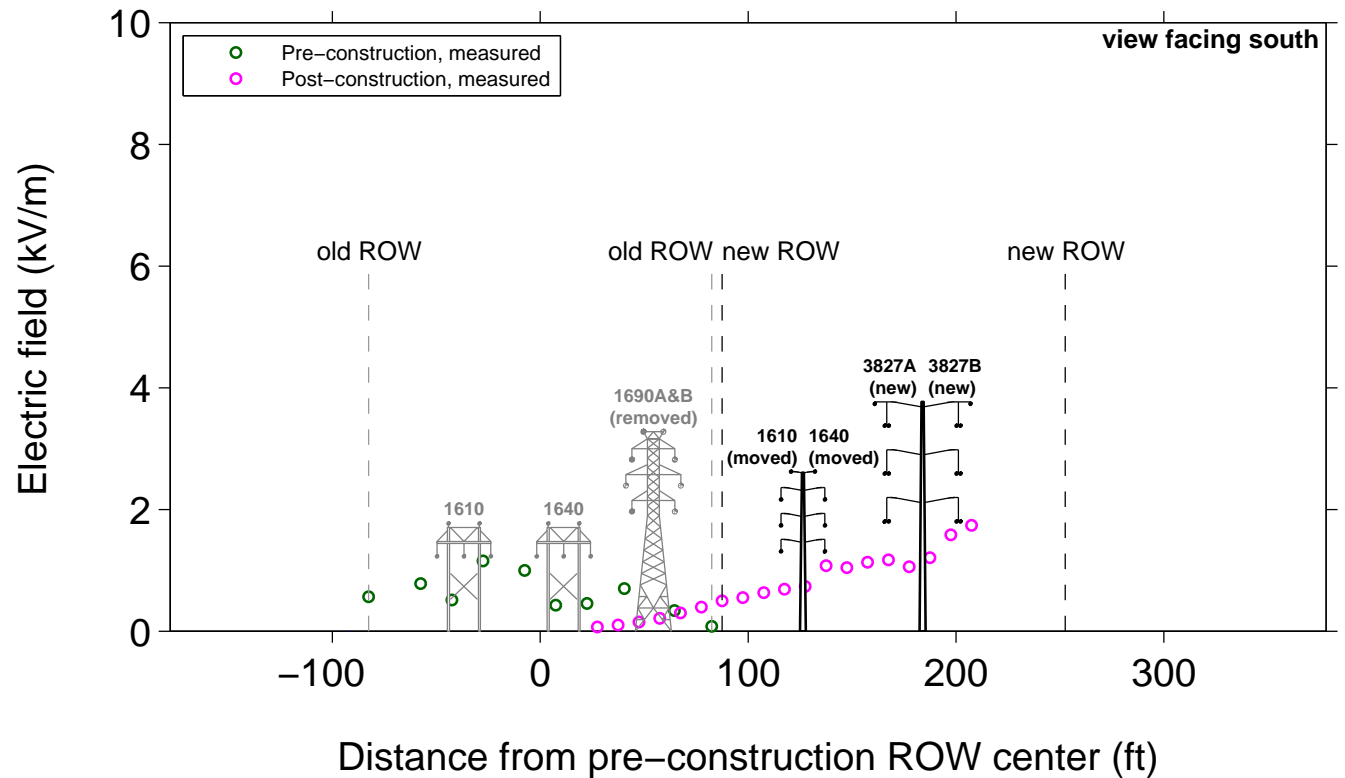
Segment: 2B Woodbridge
 Reference Section: 8 LEMF
 ROW width: 165 ft (165 ft preconstruction)
 Lat/Long meas. start: 72.99244W 41.35153N
 Lat/Long meas. end: 72.99358W 41.35181N
 Preconstruction measurement time: 10-Nov-2006 11:18:00
 Postconstruction measurement time: 13-May-2009 12:13:00
 Notes: on Jewish Community Center property; 1690 line de-energized during pre-construction readings



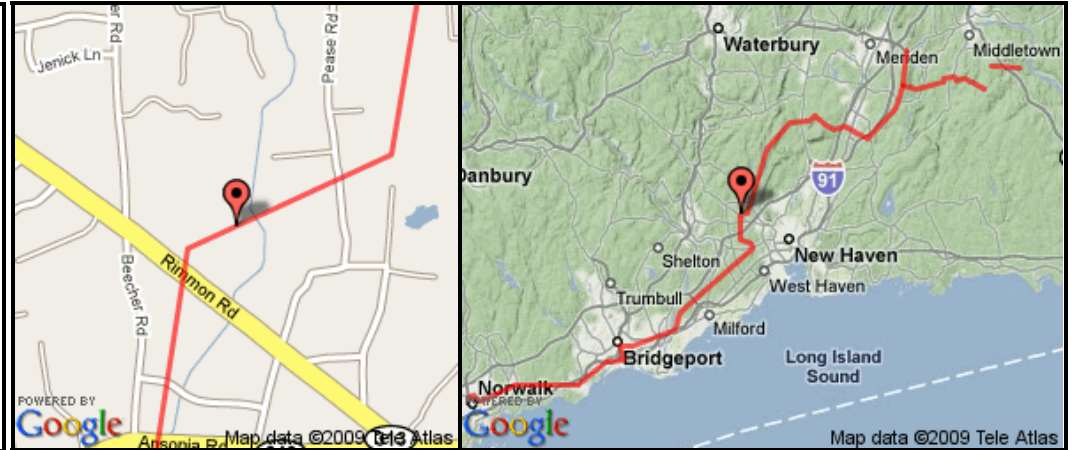
LINE AND LOADING DATA

	Line	Line Voltage (kV)	Bottom phase height (ft)
pre-construction	1610-1P	115	45.5
	1640	115	45.5
	1690A	115	45.0
	1690B	115	45.0
	-	-	-
post-construction	1610-1P	115	50.0
	1640	115	50.0
	3827A	345	57.0
	3827B	345	57.0
	-	-	-

**Electric field, Monitoring Site 20
Jewish Community Center Parking Lot**



Monitoring Site 21 Congregation B'nai Jacob
 Segment: 2B Woodbridge
 Reference Section: 8 LEMF
 ROW width: 165 ft (165 ft preconstruction)
 Lat/Long meas. start: 73.00237W 41.33900N
 Lat/Long meas. end: 73.00266W 41.33944N
 Preconstruction measurement time: 09-Nov-2006 16:33:00
 Postconstruction measurement time: 14-May-2009 11:07:00
 Notes: 1690 line de-energized during pre-construction readings

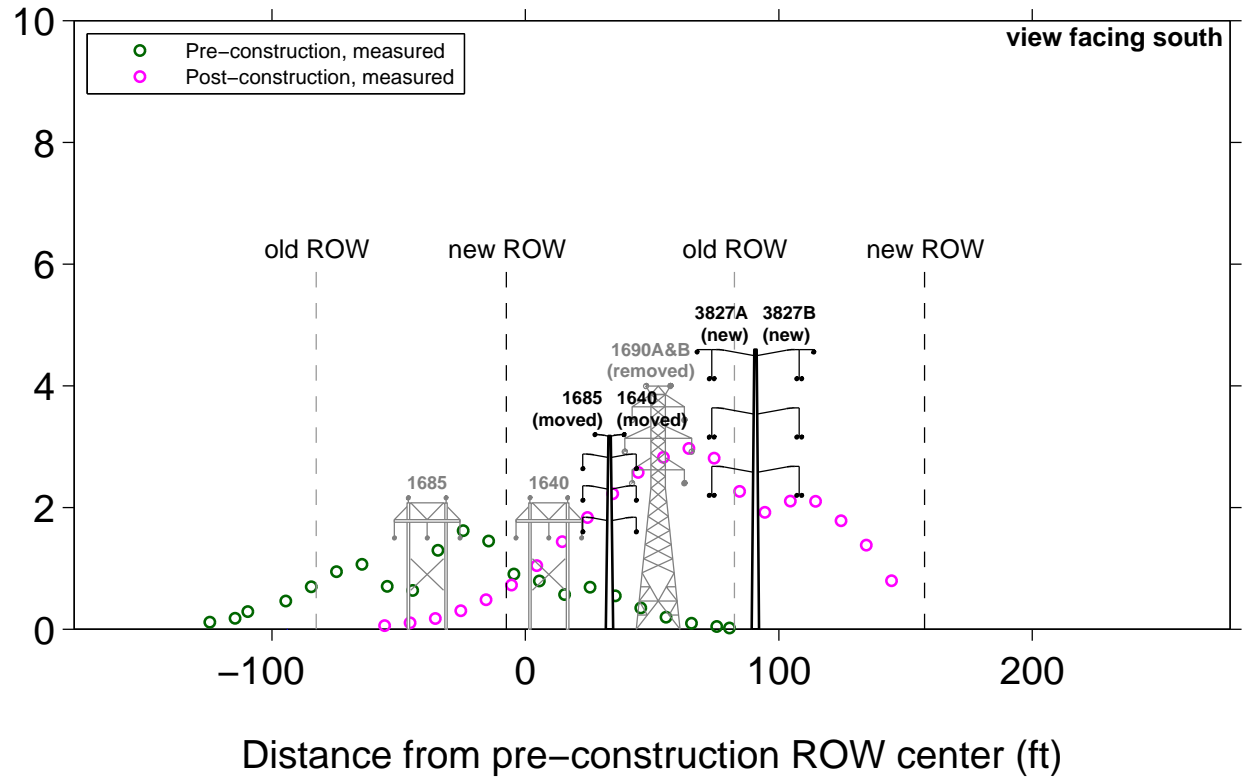


Electric field, Monitoring Site 21 Congregation B'nai Jacob

LINE AND LOADING DATA

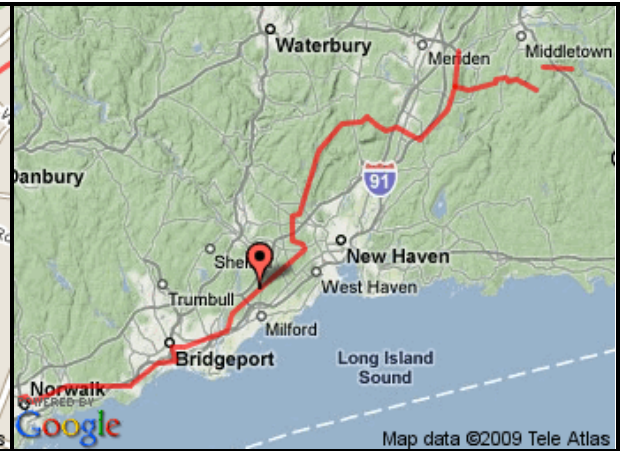
	Line	Line Voltage (kV)	Bottom phase height (ft)
pre-construction	1610-4C	115	45.5
	1640	115	45.5
	1690A	115	45.0
	1690B	115	45.0
	-	-	-
post-construction	1685	115	46.0
	1640	115	46.0
	3827A	345	47.0
	3827B	345	47.0
	-	-	-
	-	-	-

Electric field (kV/m)



Monitoring Site 24 Eisenhower Park Parking Lot and Equestrian Field

Segment: 2B
 Reference Section: 8 LEMF
 ROW width: 165 ft (165 ft preconstruction)
 Lat/Long meas. start: 73.05573W 41.25170N
 Lat/Long meas. end: 73.05664W 41.25219N
 Preconstruction measurement time: 09-Nov-2006 12:06:00
 Postconstruction measurement time: 14-May-2009 09:35:00
 Notes: 1690 line de-energized during pre-construction readings



LINE AND LOADING DATA

	Line	Line Voltage (kV)	Bottom phase height (ft)
pre-construction	1610-4C	115	45.5
	1640	115	45.5
	1690A	115	45.0
	1690B	115	45.0
	-	-	-
post-construction	1685	115	55.0
	1640	115	55.0
	3827A	345	66.0
	3827B	345	66.0
	-	-	-
	-	-	-
	-	-	-

**Electric field, Monitoring Site 24
 Eisenhower Park Parking Lot and Equestrian Field**

