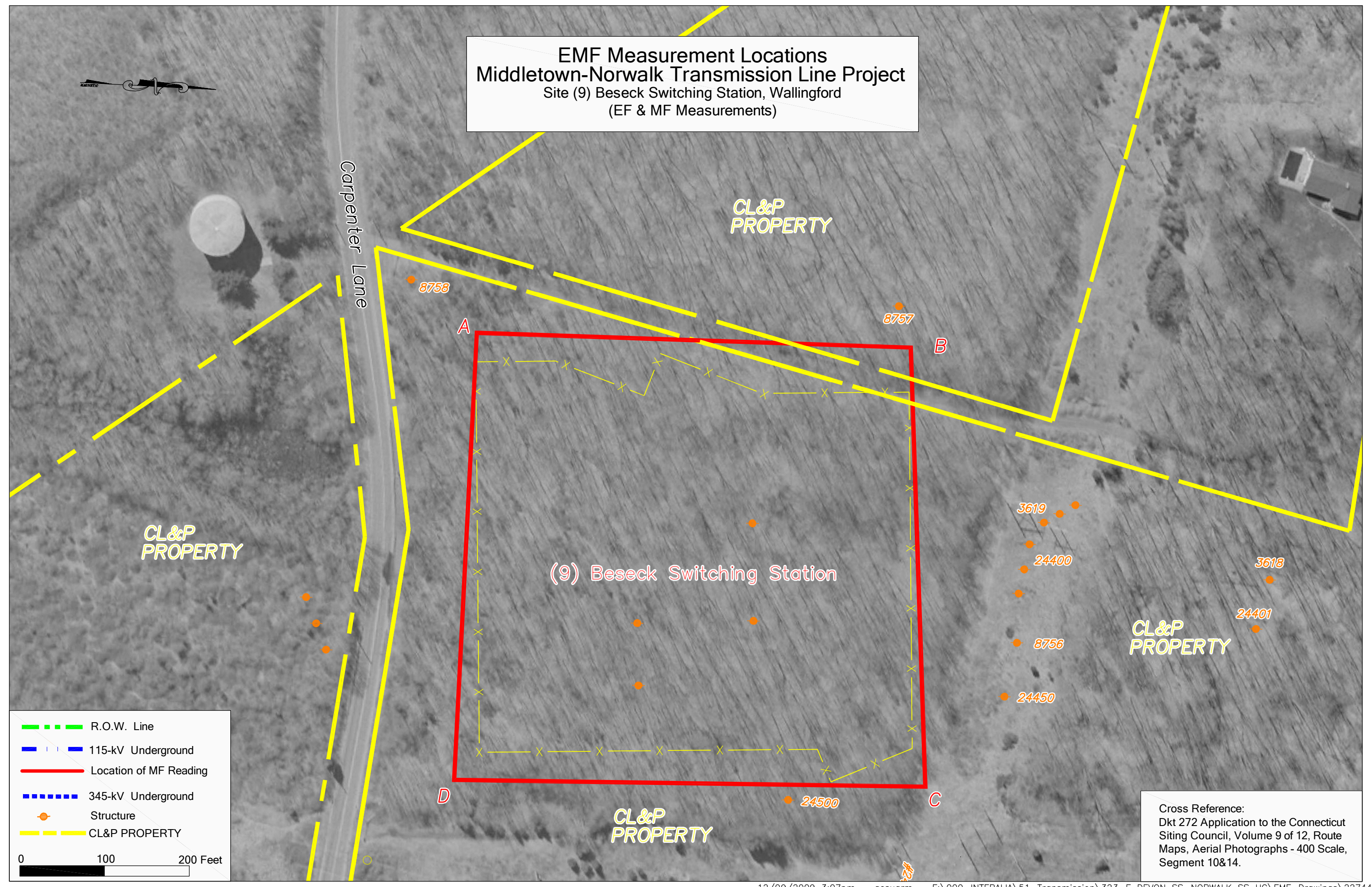


EMF Measurement Locations
Middletown-Norwalk Transmission Line Project
 Site (9) Beseck Switching Station, Wallingford
 (EF & MF Measurements)



- - - R.O.W. Line
- - - 115-kV Underground
— Location of MF Reading
- - - - 345-kV Underground
● Structure
- - - - CL&P PROPERTY

0 100 200 Feet

Cross Reference:
 Dkt 272 Application to the Connecticut
 Siting Council, Volume 9 of 12, Route
 Maps, Aerial Photographs - 400 Scale,
 Segment 10&14.