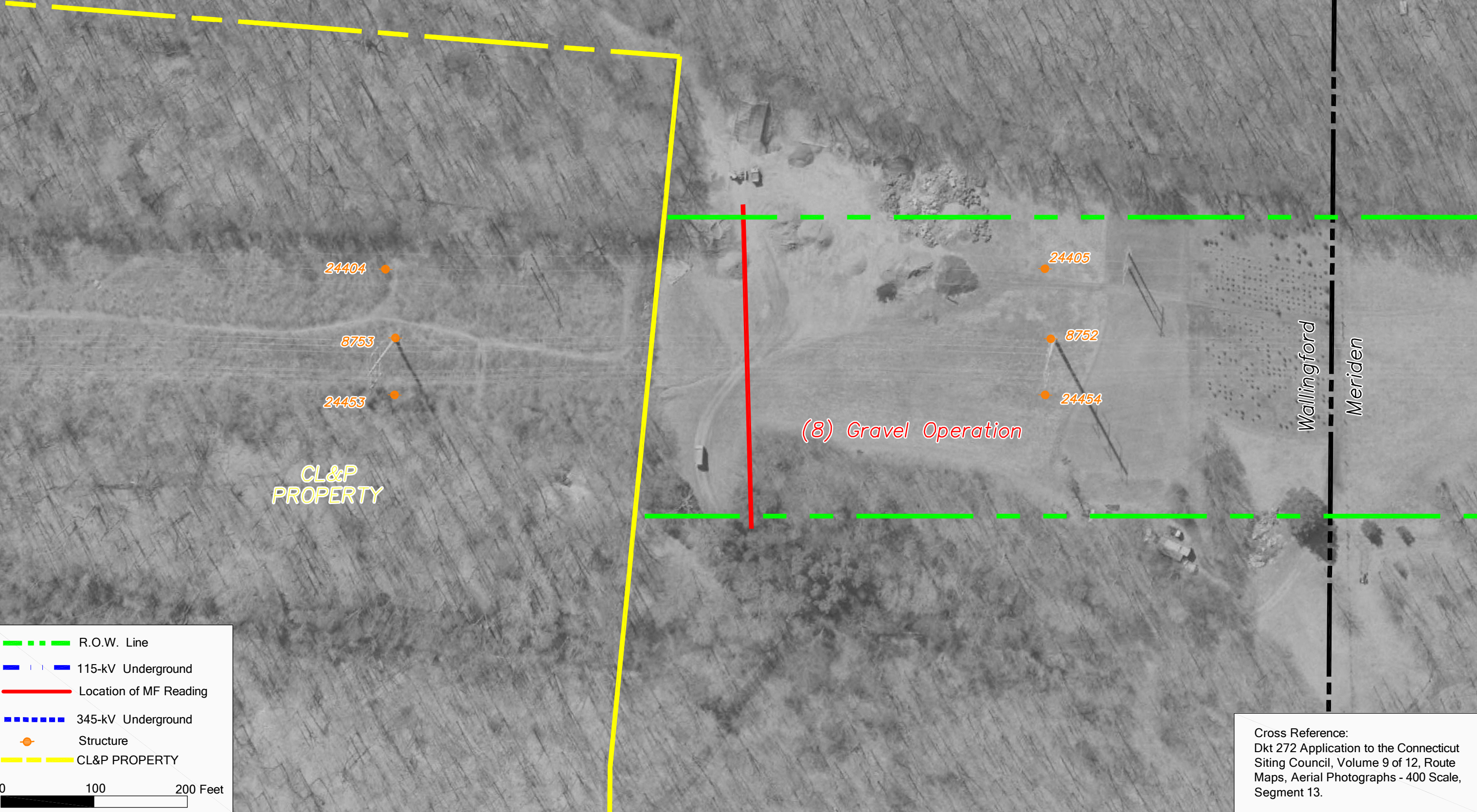


EMF Measurement Locations
 Middletown-Norwalk Transmission Line Project
 Site (8) Gravel Operation, Wallingford
 345/115-kV Overhead Lines
 (EM & MF Measurements)



CL&P
PROPERTY

(8) Gravel Operation

Wallingford
Meriden

- - - - R.O.W. Line
- - - - 115-kV Underground
- Location of MF Reading
- - - - 345-kV Underground
- Structure
- - - - CL&P PROPERTY

0 100 200 Feet

Cross Reference:
 Dkt 272 Application to the Connecticut
 Siting Council, Volume 9 of 12, Route
 Maps, Aerial Photographs - 400 Scale,
 Segment 13.