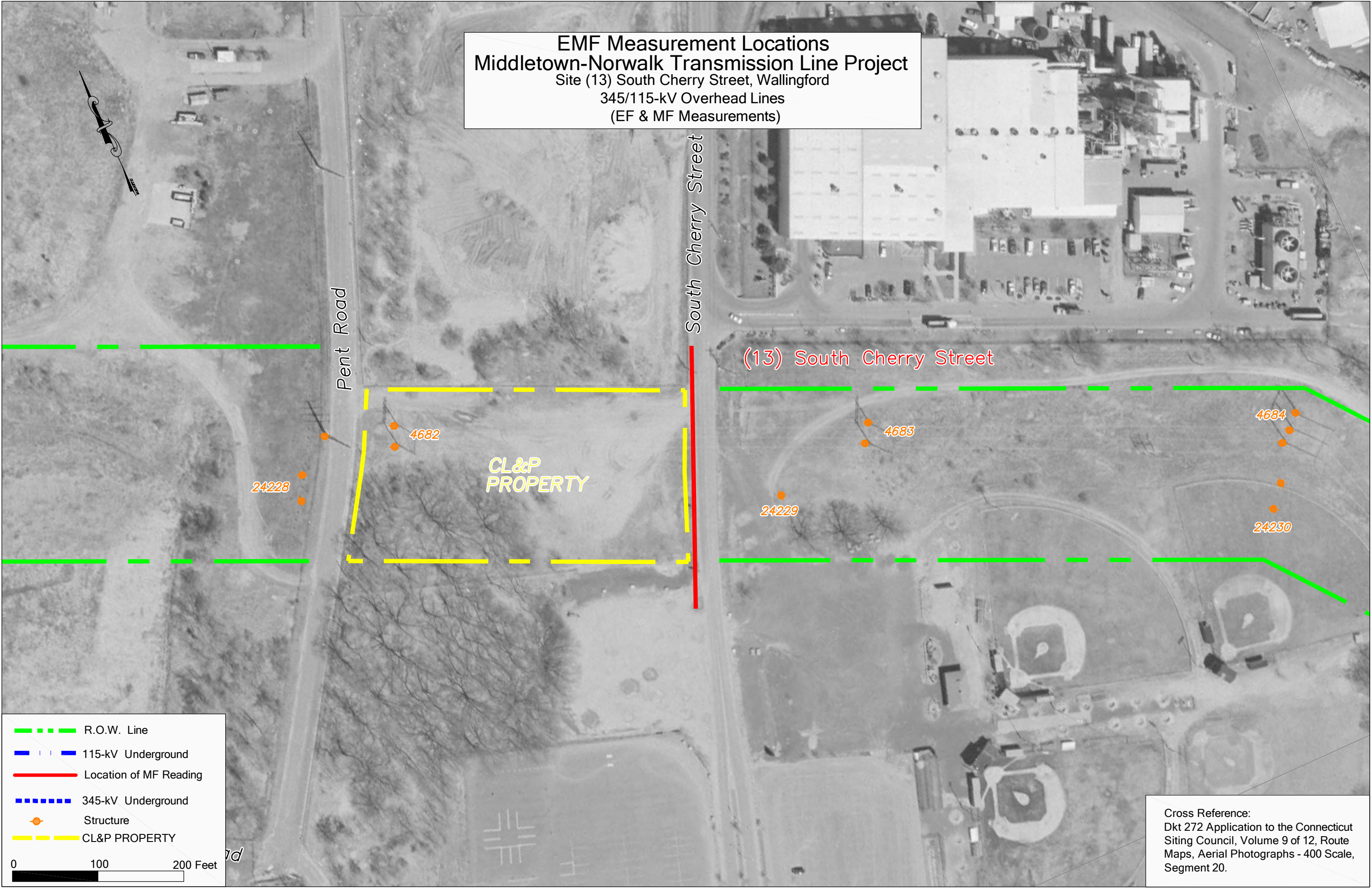


EMF Measurement Locations  
 Middletown-Norwalk Transmission Line Project  
 Site (13) South Cherry Street, Wallingford  
 345/115-kV Overhead Lines  
 (EF & MF Measurements)



--- R.O.W. Line  
 --- 115-kV Underground  
 --- Location of MF Reading  
 --- 345-kV Underground  
 ● Structure  
 --- CL&P PROPERTY  
 0 100 200 Feet

(13) South Cherry Street

Cross Reference:  
 Dkt 272 Application to the Connecticut  
 Siting Council, Volume 9 of 12, Route  
 Maps, Aerial Photographs - 400 Scale,  
 Segment 20.