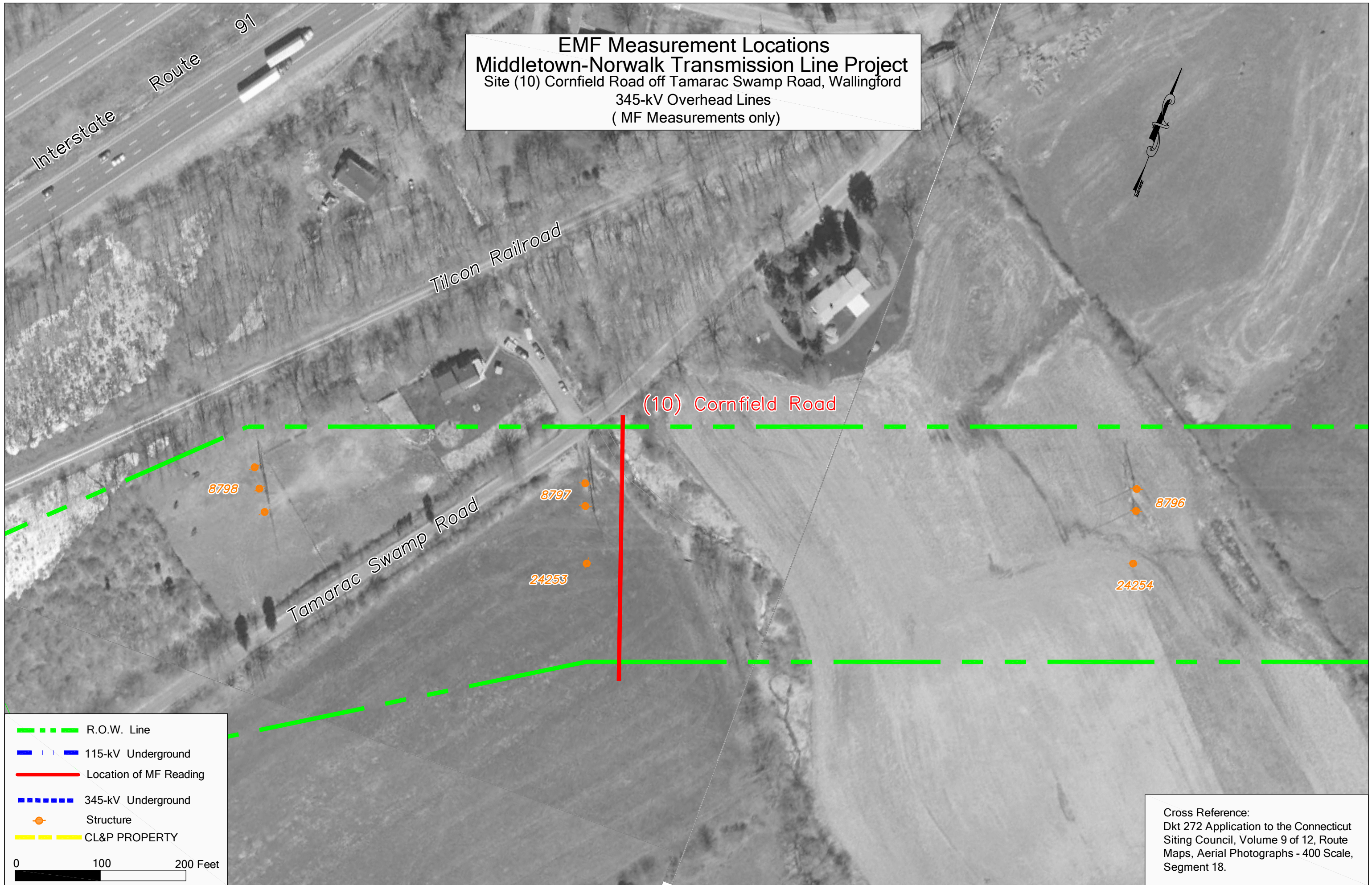
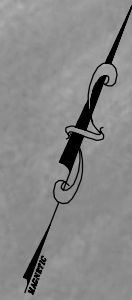


EMF Measurement Locations
Middletown-Norwalk Transmission Line Project
 Site (10) Cornfield Road off Tamarac Swamp Road, Wallingford
 345-kV Overhead Lines
 (MF Measurements only)



- - - R.O.W. Line
- | - 115-kV Underground
— Location of MF Reading
- - - - - 345-kV Underground
● Structure
- - - - - CL&P PROPERTY
 0 100 200 Feet

Cross Reference:
 Dkt 272 Application to the Connecticut
 Siting Council, Volume 9 of 12, Route
 Maps, Aerial Photographs - 400 Scale,
 Segment 18.