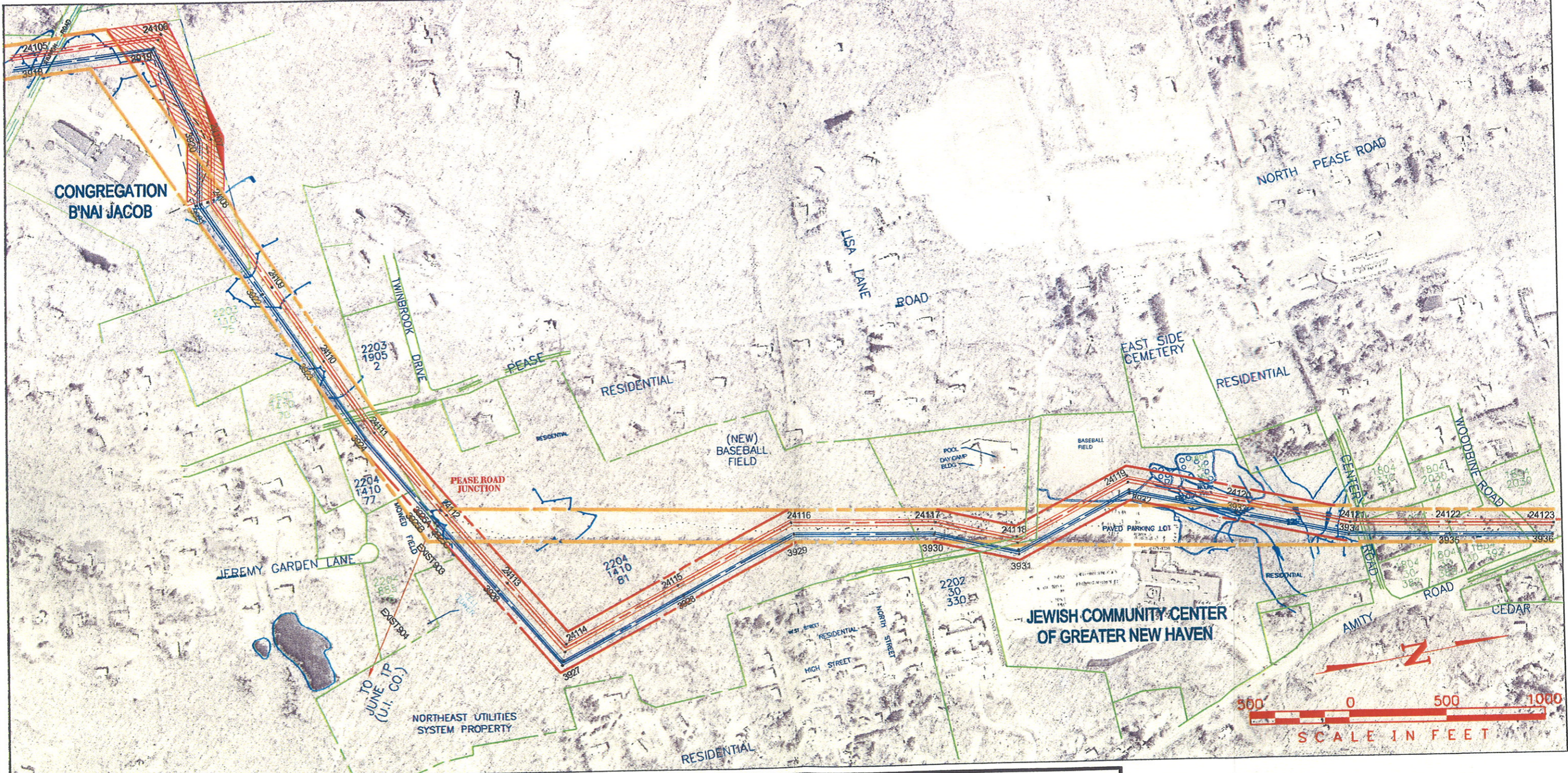








N:\MUSCO\38565\Cadd\OH\JCC\JCC-B-JACOB.dwg (JCC-B-JACOB) 06-20-2006 14:59 DDL B&Mcd



DATE OF AERIAL PHOTOGRAPHY:
SPRING 2002



LEGEND

-  WETLAND FLAGS (FIELD SURVEY, 2003)
-  WATERCOURSE (FIELD INVENTORY, 2002)
-  ORIGINAL ROW
-  SETTLEMENT ROW
-  ACCESS ROAD (FIELD INVENTORY, 2002)
-  345kV CENTERLINE W/15' CONDUCTOR OFFSET
-  115kV CENTERLINE W/10' CONDUCTOR OFFSET

**ATTACHMENT A
MIDDLETOWN - NORWALK
345-kV TRANSMISSION LINE
TOWN OF WOODBRIDGE
(REVISED JUNE 20, 2006)**

SCALE 1" = 500'

