

**Docket No. 272**

The United Illuminating Company and the Connecticut Light & Power Company application for a Certificate of Environmental Compatibility and Public Need for the construction of a 345kV electric transmission line and associated facilities between the Scovill Rock Switching Station in the Town of Middletown and the Norwalk Substation in the City of Norwalk, Connecticut.

**APPENDIX A**

**EROSION AND SEDIMENT CONTROL PLAN**

Docket No. 272

The United Illuminating Company and the Connecticut Light & Power Company application for a Certificate of Environmental Compatibility and Public Need for the construction of a 345kV electric transmission line and associated facilities between the Scovill Rock Switching Station in the Town of Middletown and the Norwalk Substation in the City of Norwalk, Connecticut.

## **APPENDIX A TABLE OF CONTENTS DRAWINGS**

### **SINGER SUBSTATION**

<b><u>Drawing No.</u></b>	<b><u>Drawing Title</u></b>
25251-530	Singer Substation Soil Erosion and Sediment Control Plan
25251-531	Singer Substation Soil Erosion and Sediment Control Details

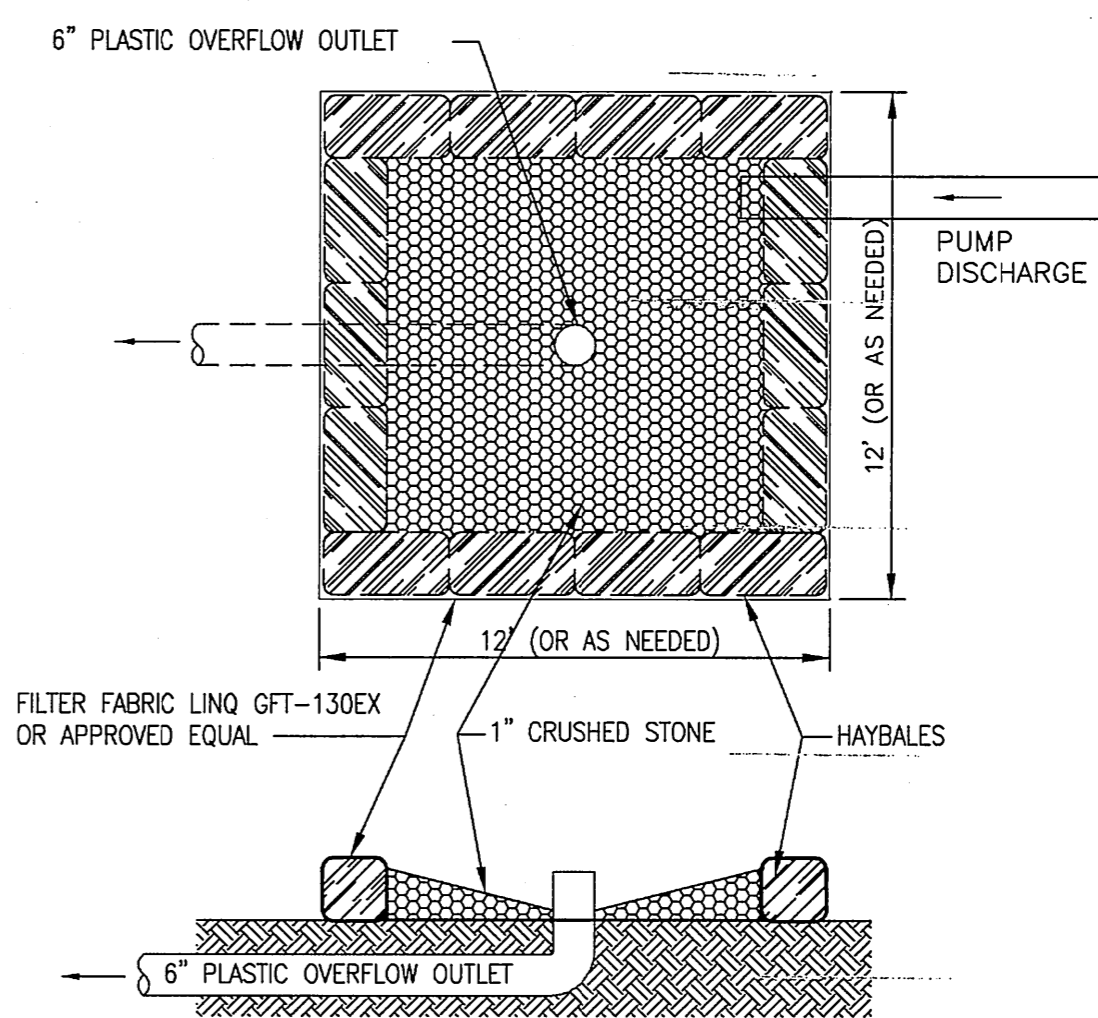
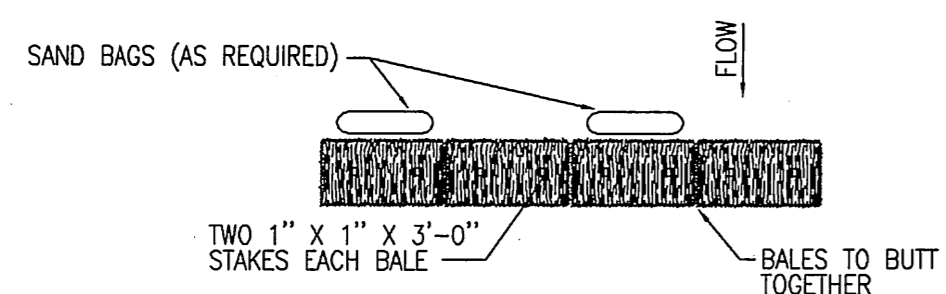
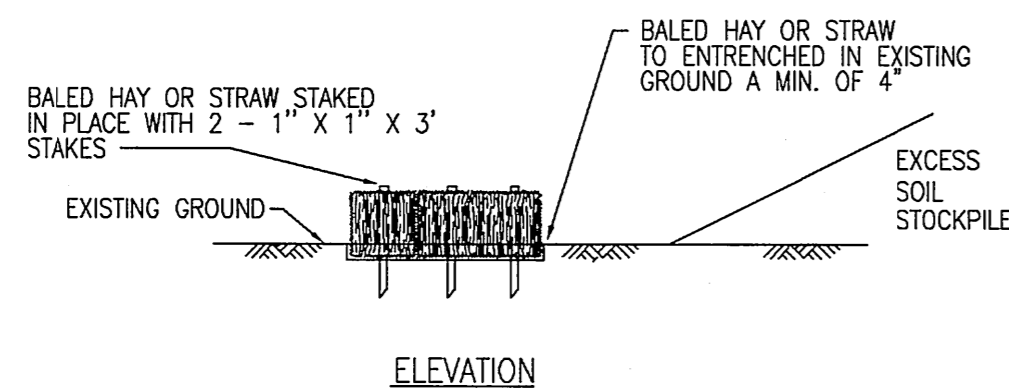
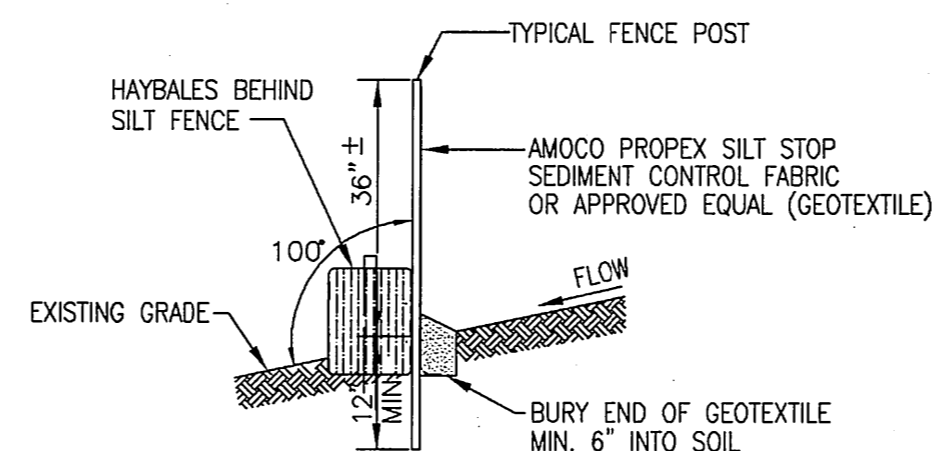
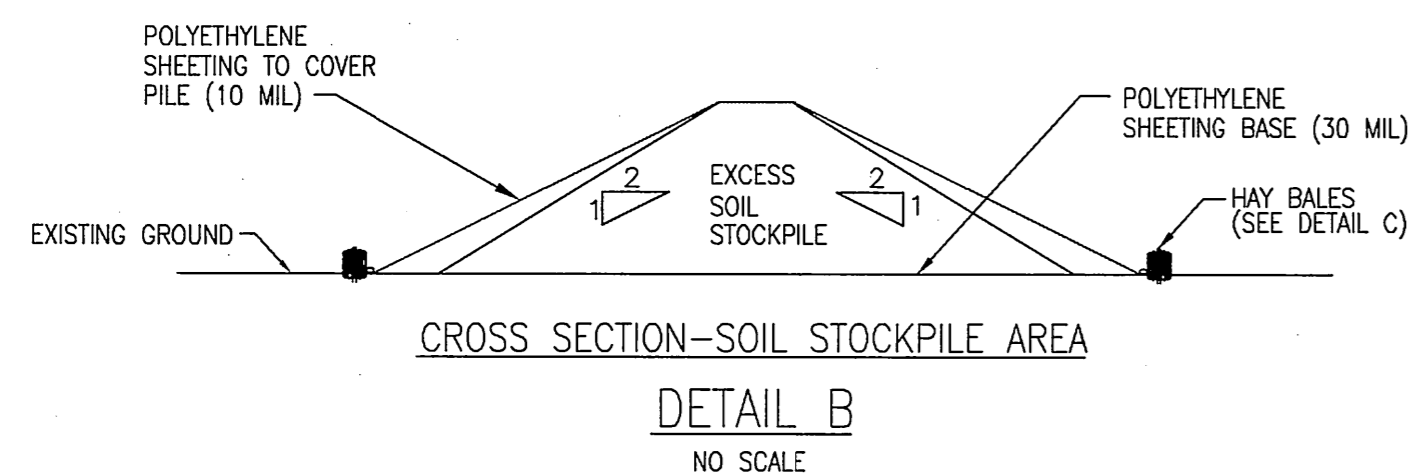
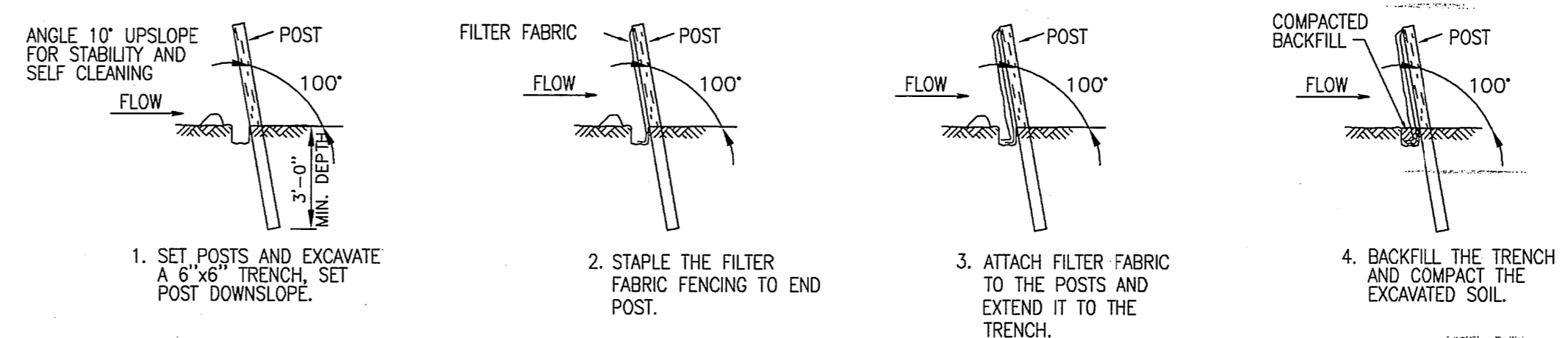
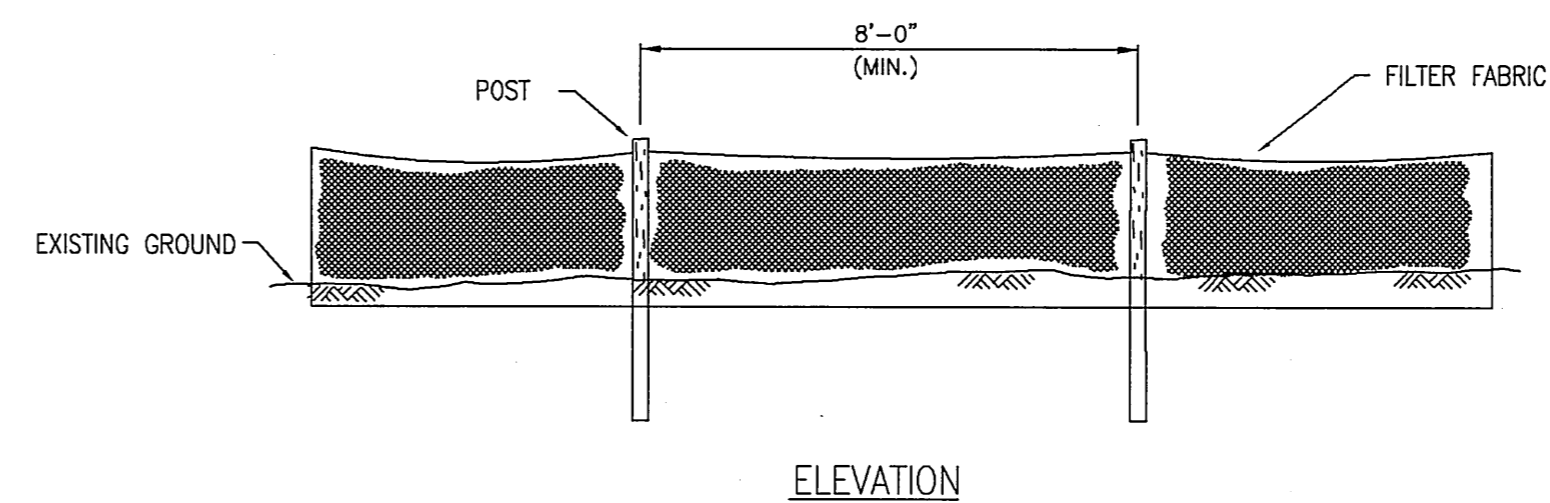
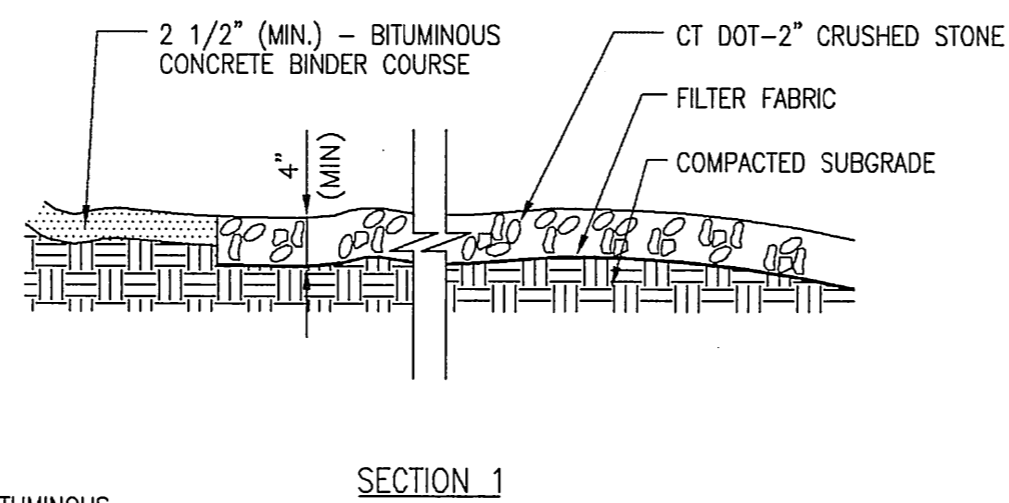
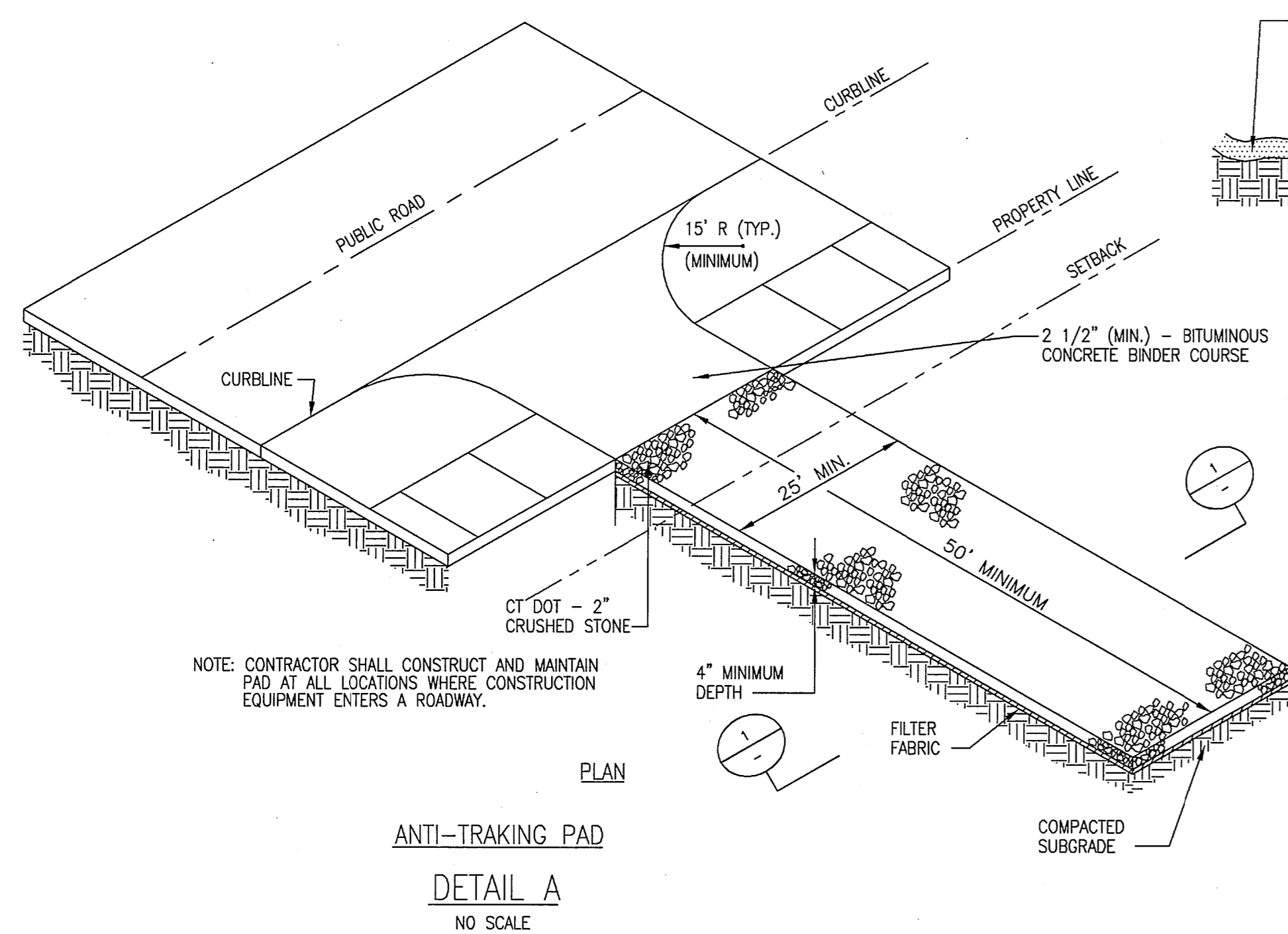
### **PEQUONNOCK SUBSTATION**

<b><u>Drawing No.</u></b>	<b><u>Drawing Title</u></b>
25247-800	Pequonnock Substation Soil Erosion and Sediment Control Plan
25247-801	Pequonnock Substation Soil Erosion and Sediment Control Details

### **BRIDGEPORT ENERGY SWITCHYARD**

<b><u>Drawing No.</u></b>	<b><u>Drawing Title</u></b>
25250-800	Bridgeport Energy Switchyard Soil Erosion and Sediment Control Plan
25250-801	Bridgeport Energy Switchyard Soil Erosion and Sediment Control Details





- NOTES:
1. 12' x 12' ARE APPROXIMATE DIMENSIONS FOR DEWATERING BASIN, DEPENDING UPON DISCHARGE TO THE BASIN THE DIMENSIONS MAY BE ADJUSTED BY THE ENGINEER.
  2. ALTERNATE DESIGNS SHALL BE APPROVED BY THE ENGINEER PRIOR TO IMPLEMENTATION.

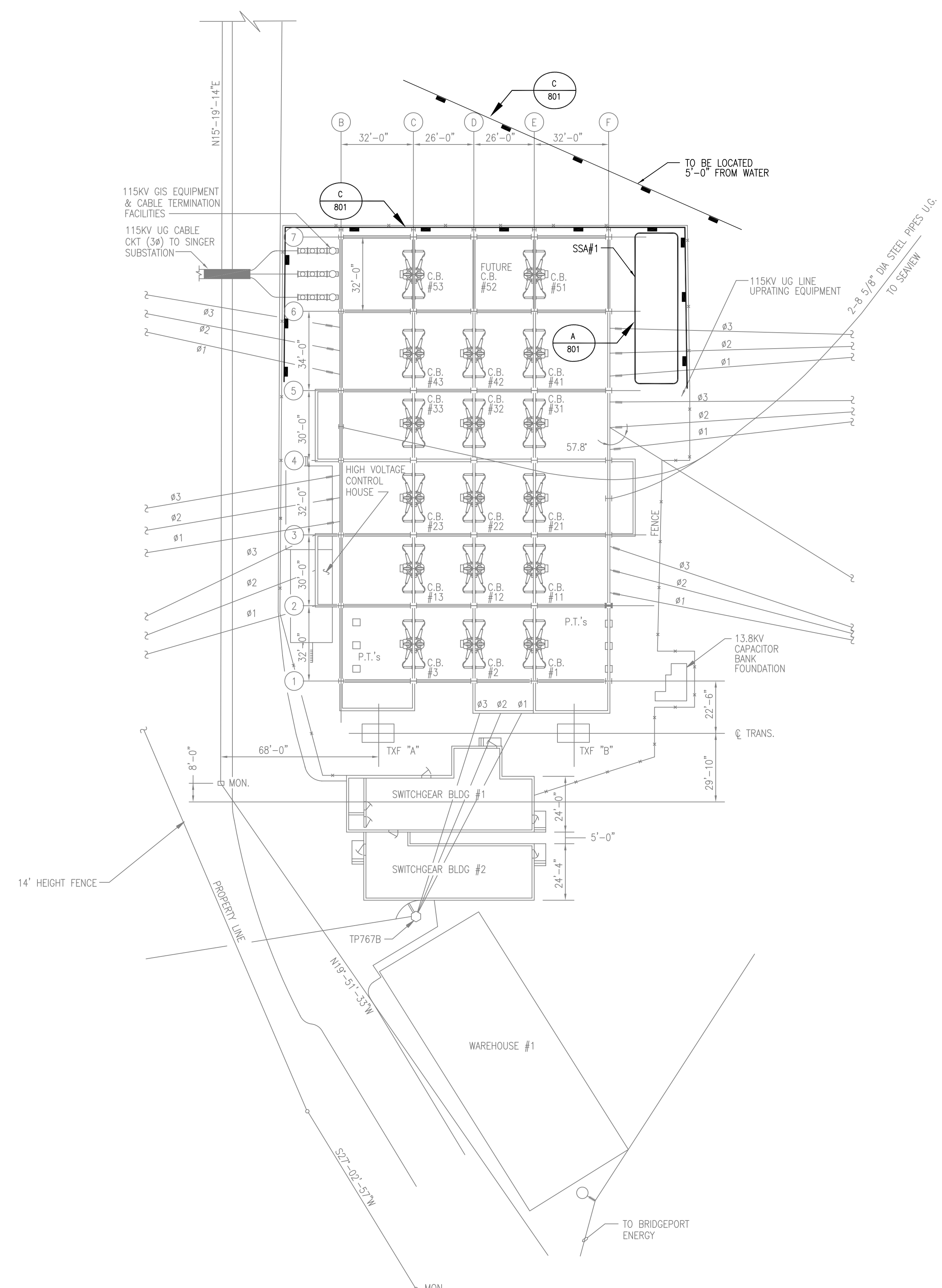
**PRELIMINARY**  
NOT TO BE USED FOR CONSTRUCTION

No.	Date	Revision	By	Chkd.	Engr.	Supv.
0	04-20-05	INITIAL ISSUE	GC		ACM	

**ui**  
The United Illuminating Company  
157 Church St. New Haven, Ct. 06506

SINGER SUBSTATION  
SOIL EROSION AND SEDIMENT CONTROL  
DETAILS

Drawn	Date	Scale: NONE	CAD FILE NAME	SEQUENCE No.	DRAWING NUMBER
Chkd.	Design Engr.	Design Supv.			25251-531



**NOTES**

- ELEVATIONS BASED ON BRIDGEPORT MUNICIPAL DATUM.
- REFER TO DRAWING 25247-801 FOR SOIL EROSION AND SEDIMENT CONTROL DETAILS.

**NARRATIVE**

ALL DISTURBED AREAS SHALL BE COVERED WITH A MINIMUM OF 6" OF COARSE GRAVEL OR CRUSHED STONE AND RESTORED TO MATCH EXISTING CONDITIONS. SILTATION FENCE WILL BE INSTALLED AS INDICATED ON THIS DRAWING PRIOR TO ANY EXCAVATION OPERATIONS AND WILL BE MAINTAINED UNTIL ALL DISTURBED AREAS HAVE BEEN PERMANENTLY RESTORED. THE REMEDIATION ENGINEER SHALL VERIFY THE PROPER LOCATION AND INSTALLATION OF ALL EROSION CONTROL MEASURES.

ALL SOILS REMOVED SHALL BE EITHER PUT DIRECTLY INTO TRUCKS AND SHIPPED OFF SITE OR STORED WITHIN A CONSTRUCTED SOIL STOCKPILE AREA (SSA) AS INDICATED ON THIS PLAN. SSAs SHALL BE KEPT COVERED AT ALL TIMES EXCEPT WHEN SOIL IS BEING ADDED OR REMOVED. THE TOP LINER SHALL PREVENT PRECIPITATION FROM CONTACTING CONTAMINATED SOILS AND SHALL BE SECURED TO PREVENT IT FROM BEING DISLODGED BY WIND. SOILS POTENTIALLY TO BE REUSED AS BACKFILL AFTER CHARACTERIZATION TESTING SHALL BE STORED IN SEPARATE SSAs.

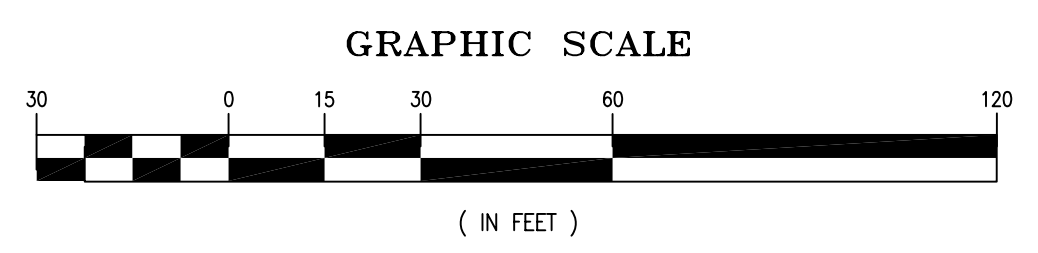
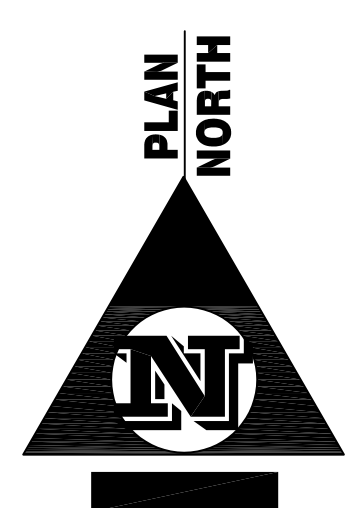
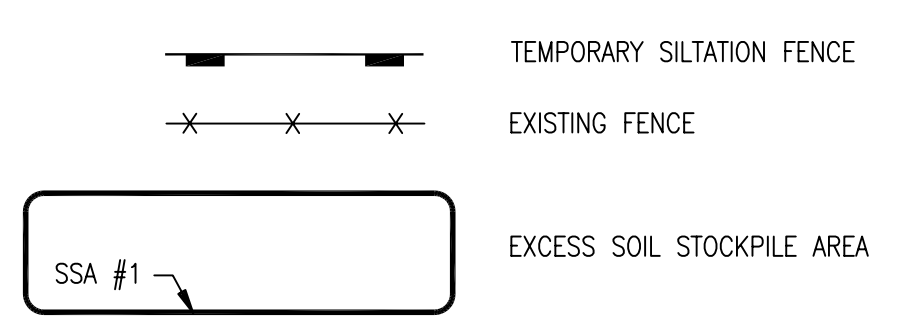
**CONSTRUCTION SEQUENCE**

- OBTAIN ANY REQUIRED PERMITS.
- INSTALL SEDIMENT FENCE AT LOCATIONS SHOWN PRIOR TO COMMENCEMENT OF ANY EXCAVATION OPERATIONS. THE REMEDIATION ENGINEER SHALL VERIFY THE PROPER LOCATION AND INSTALLATION OF ALL EROSION CONTROL MEASURES.
- PLACE AND COMPACT FILL UP TO WITHIN 6" OF THE ORIGINAL EXISTING GRADE.
- PLACE A 6" COURSE OF COARSE GRAVEL OR CRUSHED STONE.
- AFTER ALL AREAS HAVE BEEN PERMANENTLY RESTORED TO EXISTING CONDITIONS, REMOVE EROSION CONTROL MEASURES.

**EROSION CONTROL NOTES**

- ALL UTILITIES ARE APPROXIMATE. CONTRACTOR TO VERIFY ALL UTILITIES PRIOR TO CONSTRUCTION. CONTACT "CALL-BEFORE-YOU-DIG" AT 1-800-922-4455 AT LEAST 72 HOURS PRIOR TO ANY EXCAVATION.
- THE INSTALLATION AND MAINTENANCE OF ALL EROSION CONTROL MEASURES WILL BE THE RESPONSIBILITY OF THE CONTRACTOR.
- THE "2002 CONNECTICUT GUIDELINES FOR SOIL EROSION AND SEDIMENT CONTROL" BY THE CONNECTICUT COUNCIL ON SOIL AND WATER CONSERVATION IN COOPERATION WITH THE CONNECTICUT DEPARTMENT OF ENVIRONMENTAL PROTECTION, DEP BULLETIN 34, SHALL BE USED FOR INSTALLING AND MAINTAINING ALL EROSION CONTROL MEASURES. THE CONTRACTOR SHALL INSTALL ADDITIONAL MEASURES AS NECESSARY IF DIRECTED BY THE REMEDIATION ENGINEER OR THE CITY OF BRIDGEPORT STAFF.

**LEGEND:**



**BLACK & VEATCH**

PROJECT NO. \_\_\_\_\_

DRAWN CC

DESIGNED ACM

APPROVED \_\_\_\_\_

CHECKED \_\_\_\_\_

0	04-20-05	INITIAL ISSUE	cc	ACM
No	Date	Revision	By	Chkd. Engr. Supv.

**PRELIMINARY**  
NOT TO BE USED FOR CONSTRUCTION

PEQUONNOCK SUBSTATION  
SOIL EROSION AND SEDIMENT  
CONTROL PLAN

CAD FILE NAME	SEQUENCE No.	DRAWING NUMBER
		25247-800



**NOTES**

- ELEVATIONS BASED ON BRIDGEPORT MUNICIPAL DATUM.
- REFER TO DRAWING 25250-801 FOR SOIL EROSION AND SEDIMENT CONTROL DETAILS.

**NARRATIVE**

ALL DISTURBED AREAS SHALL BE COVERED WITH A MINIMUM OF 6" OF COARSE GRAVEL OR CRUSHED STONE AND RESTORED TO MATCH EXISTING CONDITIONS. SILTATION FENCE WILL BE INSTALLED AS INDICATED ON THIS DRAWING PRIOR TO ANY EXCAVATION OPERATIONS AND WILL BE MAINTAINED UNTIL ALL DISTURBED AREAS HAVE BEEN PERMANENTLY RESTORED. THE REMEDIATION ENGINEER SHALL VERIFY THE PROPER LOCATION AND INSTALLATION OF ALL EROSION CONTROL MEASURES.

ALL SOILS REMOVED SHALL BE EITHER PUT DIRECTLY INTO TRUCKS AND SHIPPED OFF SITE OR STORED WITHIN A CONSTRUCTED SOIL STOCKPILE AREA (SSA) AS INDICATED ON THIS PLAN. SSAs SHALL BE KEPT COVERED AT ALL TIMES EXCEPT WHEN SOIL IS BEING ADDED OR REMOVED. THE TOP LINER SHALL PREVENT PRECIPITATION FROM CONTACTING CONTAMINATED SOILS AND SHALL BE SECURED TO PREVENT IT FROM BEING DISLODGED BY WIND. SOILS POTENTIALLY TO BE REUSED AS BACKFILL AFTER CHARACTERIZATION TESTING SHALL BE STORED IN SEPARATE SSAs.

**CONSTRUCTION SEQUENCE**

- OBTAIN ANY REQUIRED PERMITS.
- INSTALL SEDIMENT FENCE AT LOCATIONS SHOWN PRIOR TO COMMENCEMENT OF ANY EXCAVATION OPERATIONS. THE REMEDIATION ENGINEER SHALL VERIFY THE PROPER LOCATION AND INSTALLATION OF ALL EROSION CONTROL MEASURES.
- PLACE AND COMPACT FILL UP TO WITHIN 6" OF THE ORIGINAL EXISTING GRADE.
- PLACE A 6" COURSE OF COARSE GRAVEL OR CRUSHED STONE.
- AFTER ALL AREAS HAVE BEEN PERMANENTLY RESTORED TO EXISTING CONDITIONS, REMOVE EROSION CONTROL MEASURES.

**EROSION CONTROL NOTES**

- ALL UTILITIES ARE APPROXIMATE. CONTRACTOR TO VERIFY ALL UTILITIES PRIOR TO CONSTRUCTION. CONTACT "CALL-BEFORE-YOU-DIG" AT 1-800-922-4455 AT LEAST 72 HOURS PRIOR TO ANY EXCAVATION.
- THE INSTALLATION AND MAINTENANCE OF ALL EROSION CONTROL MEASURES WILL BE THE RESPONSIBILITY OF THE CONTRACTOR.
- THE "2002 CONNECTICUT GUIDELINES FOR SOIL EROSION AND SEDIMENT CONTROL" BY THE CONNECTICUT COUNCIL ON SOIL AND WATER CONSERVATION IN COOPERATION WITH THE CONNECTICUT DEPARTMENT OF ENVIRONMENTAL PROTECTION, DEP BULLETIN 34, SHALL BE USED FOR INSTALLING AND MAINTAINING ALL EROSION CONTROL MEASURES. THE CONTRACTOR SHALL INSTALL ADDITIONAL MEASURES AS NECESSARY IF DIRECTED BY THE REMEDIATION ENGINEER OR THE CITY OF BRIDGEPORT STAFF.

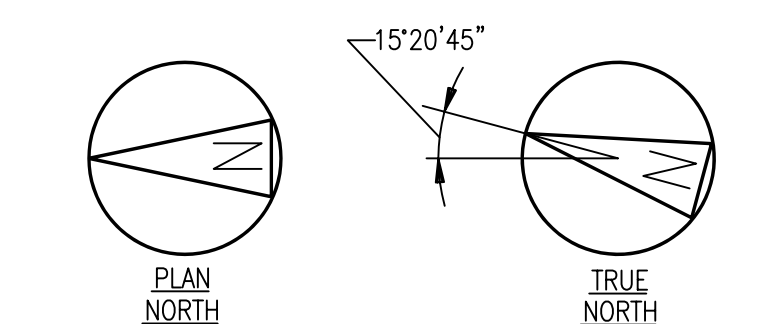
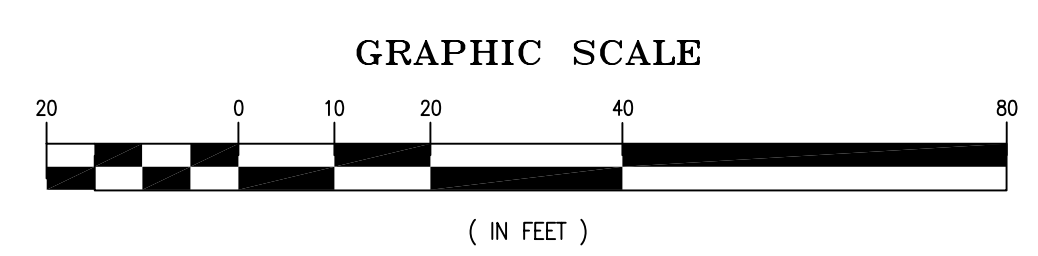
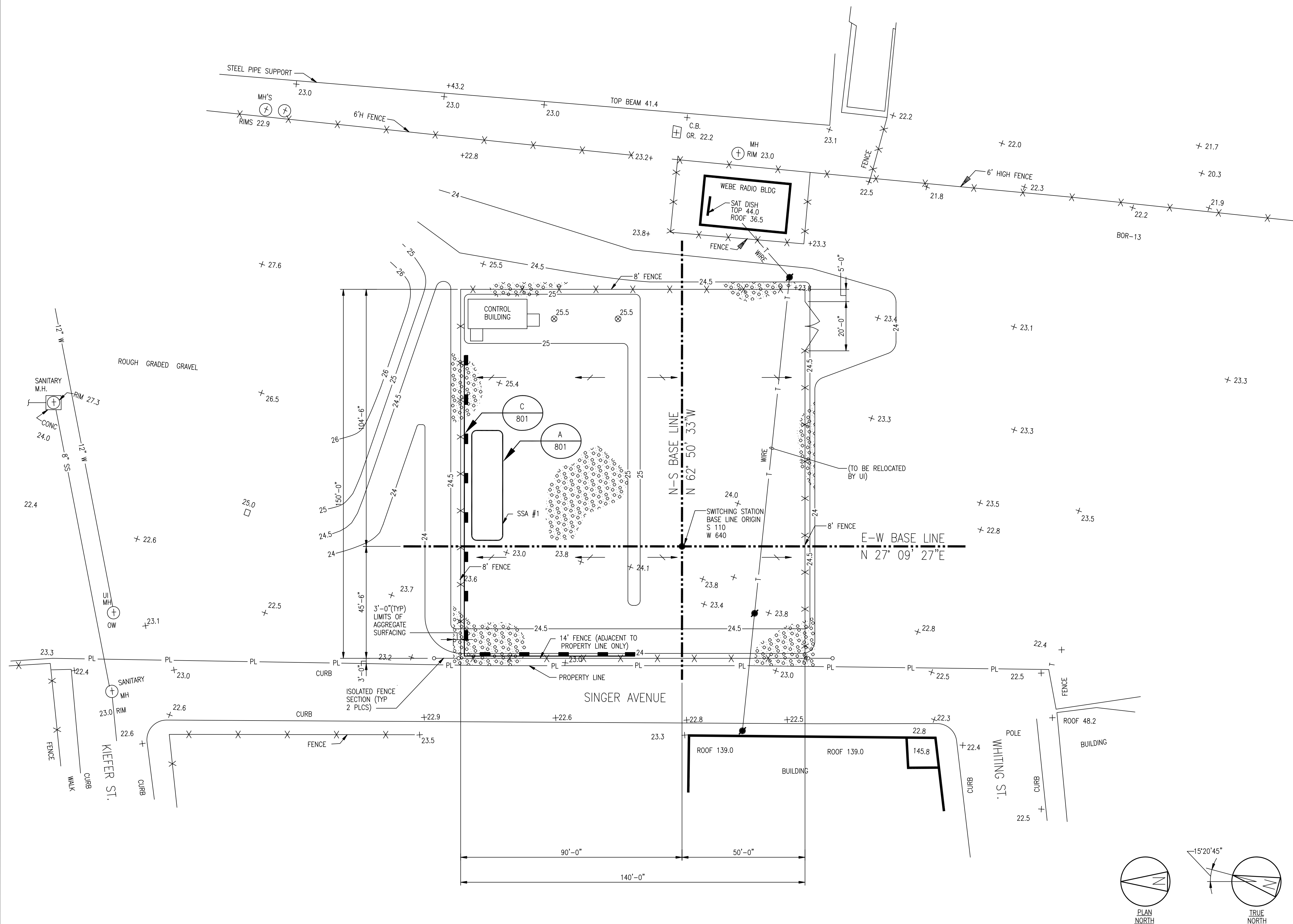
**LEGEND:**

- EXISTING CONTOURS
- TEMPORARY SILTATION FENCE
- EXISTING FENCE
- PROPERTY LINE
- EXCESS SOIL STOCKPILE AREA

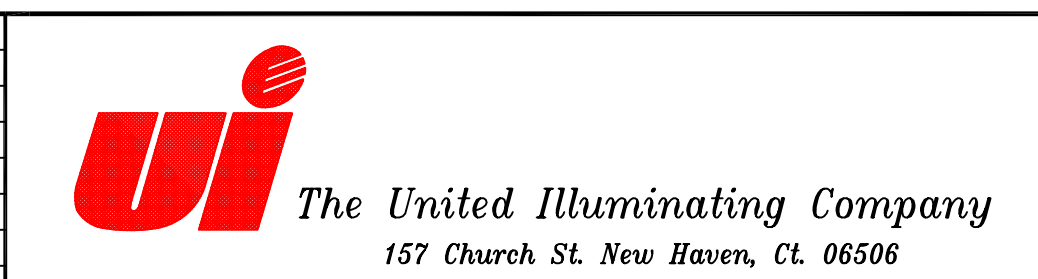
**REFERENCE DRAWINGS:**

SWITCHING STATION 25250-002  
GRADING PLAN

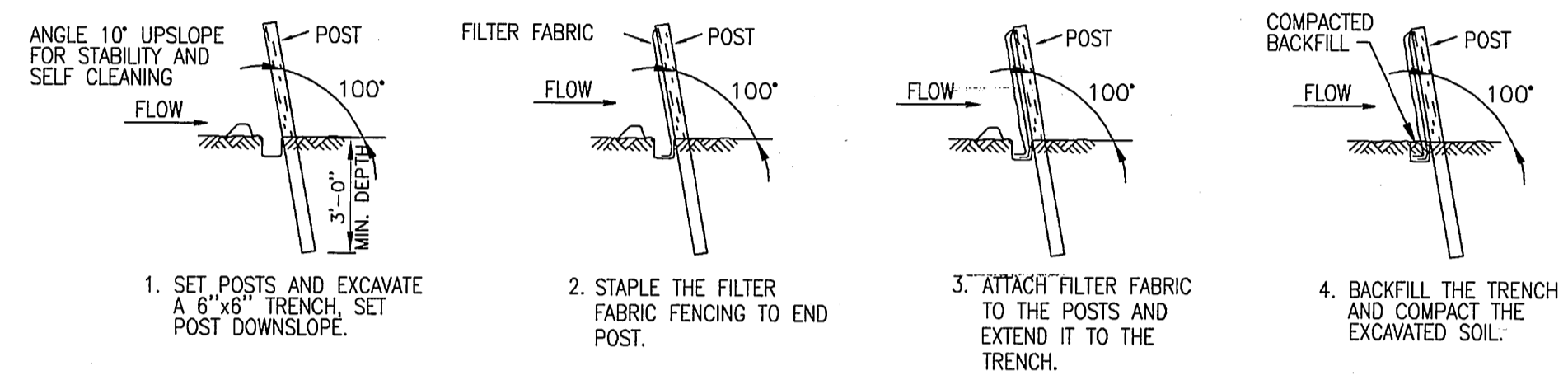
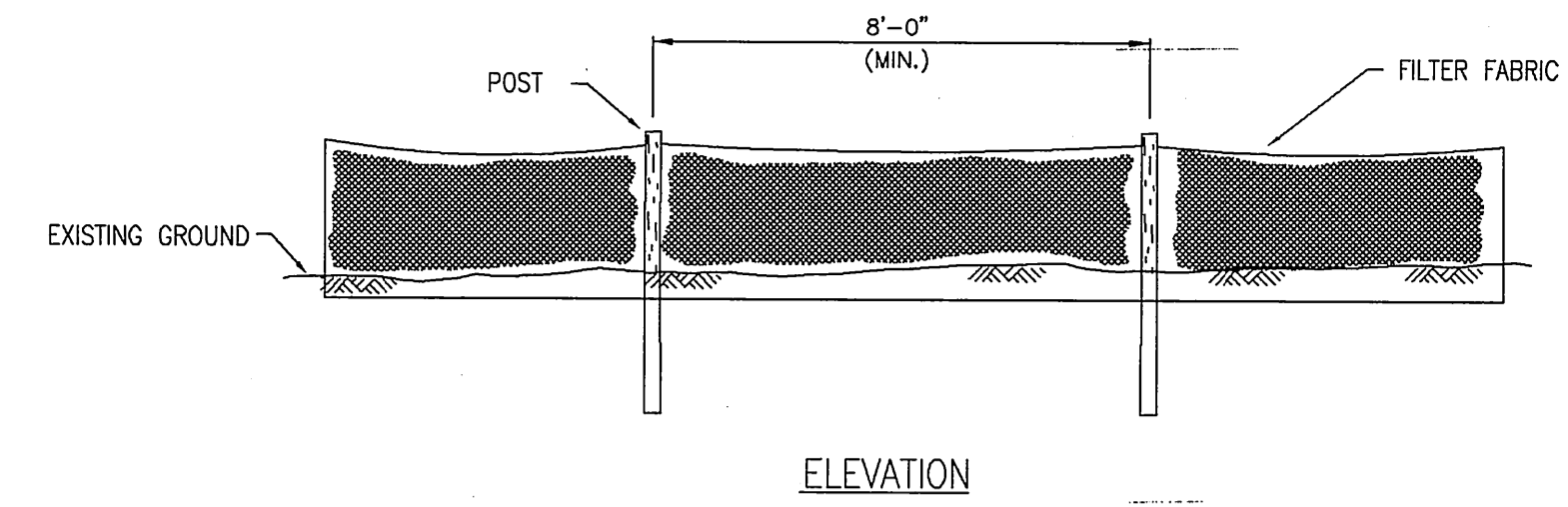
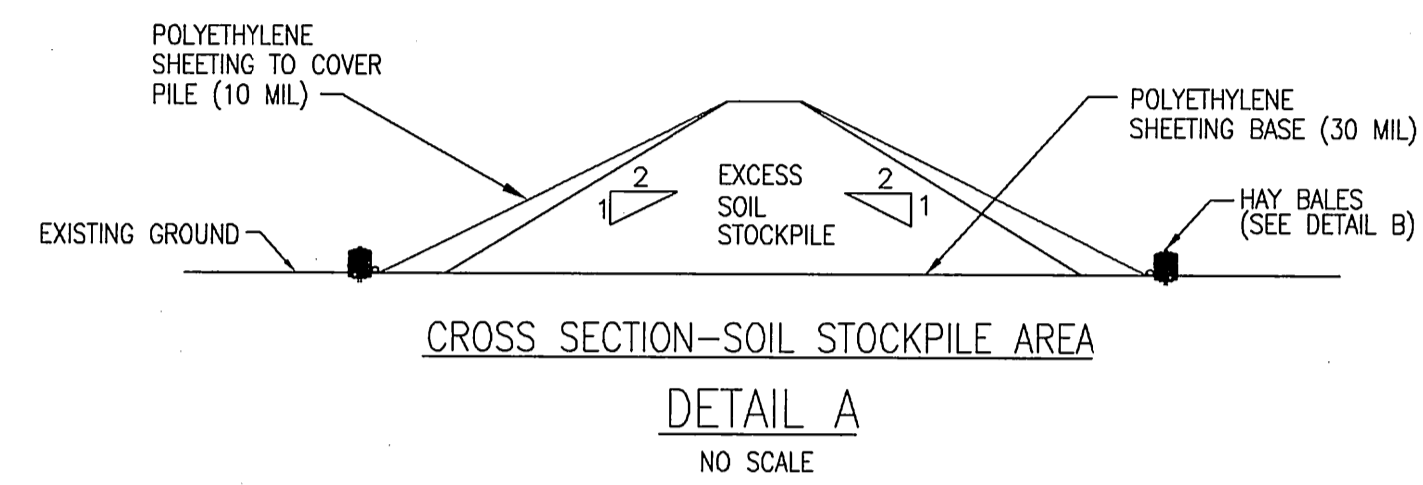
**PRELIMINARY**  
NOT TO BE USED FOR CONSTRUCTION



<b>BLACK &amp; VEATCH</b>															
PROJECT NO. 136745															
DRAWN	CC														
DESIGNED	ACM														
APPROVED		0	04-20-05	INITIAL ISSUE		CC		ACM		Drawn	Date	Scale: 1"=20'-0"	CAD FILE NAME	SEQUENCE No.	DRAWING NUMBER
CHECKED		No	Date	Revision		By	Chkd.	Engr.	Supv.	Chkd.	Design Engr.	Design Supv.			25250-800

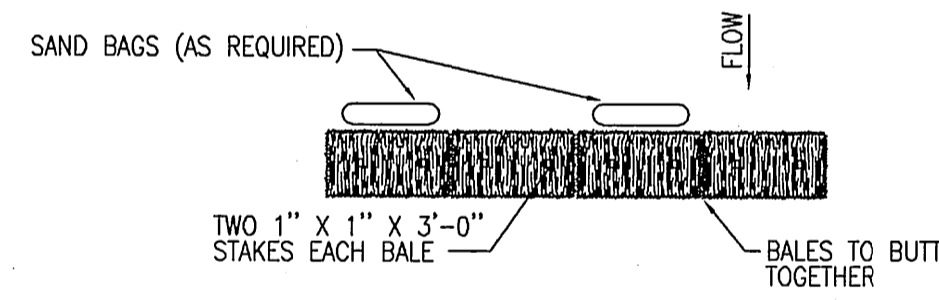
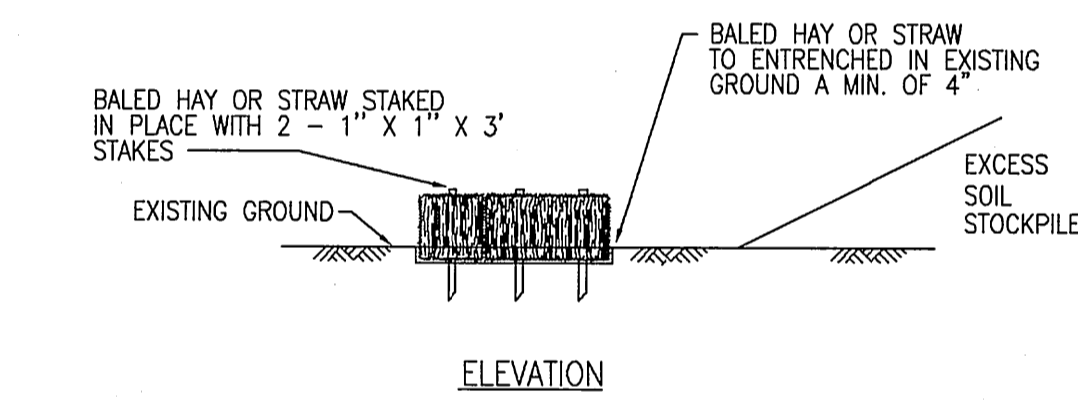


BRIDGEPORT ENERGY  
SOIL EROSION AND  
SEDIMENT CONTROL PLAN

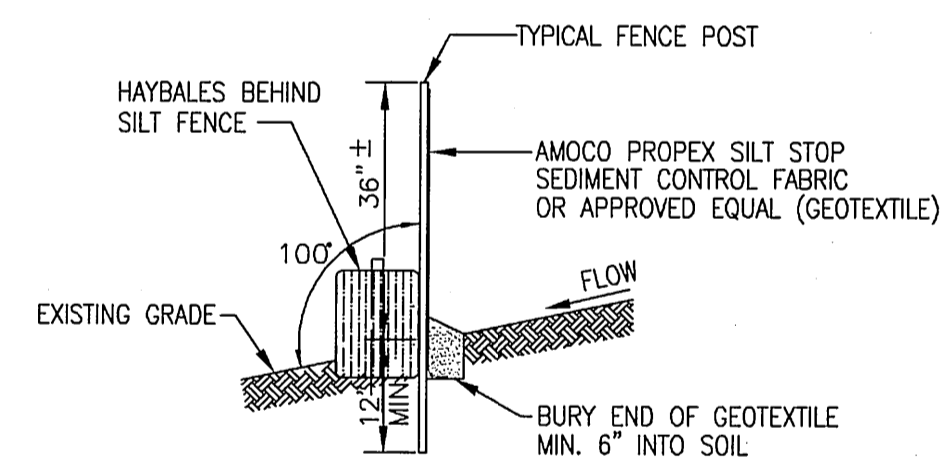


SEDIMENT FENCE

DETAIL C  
NO SCALE

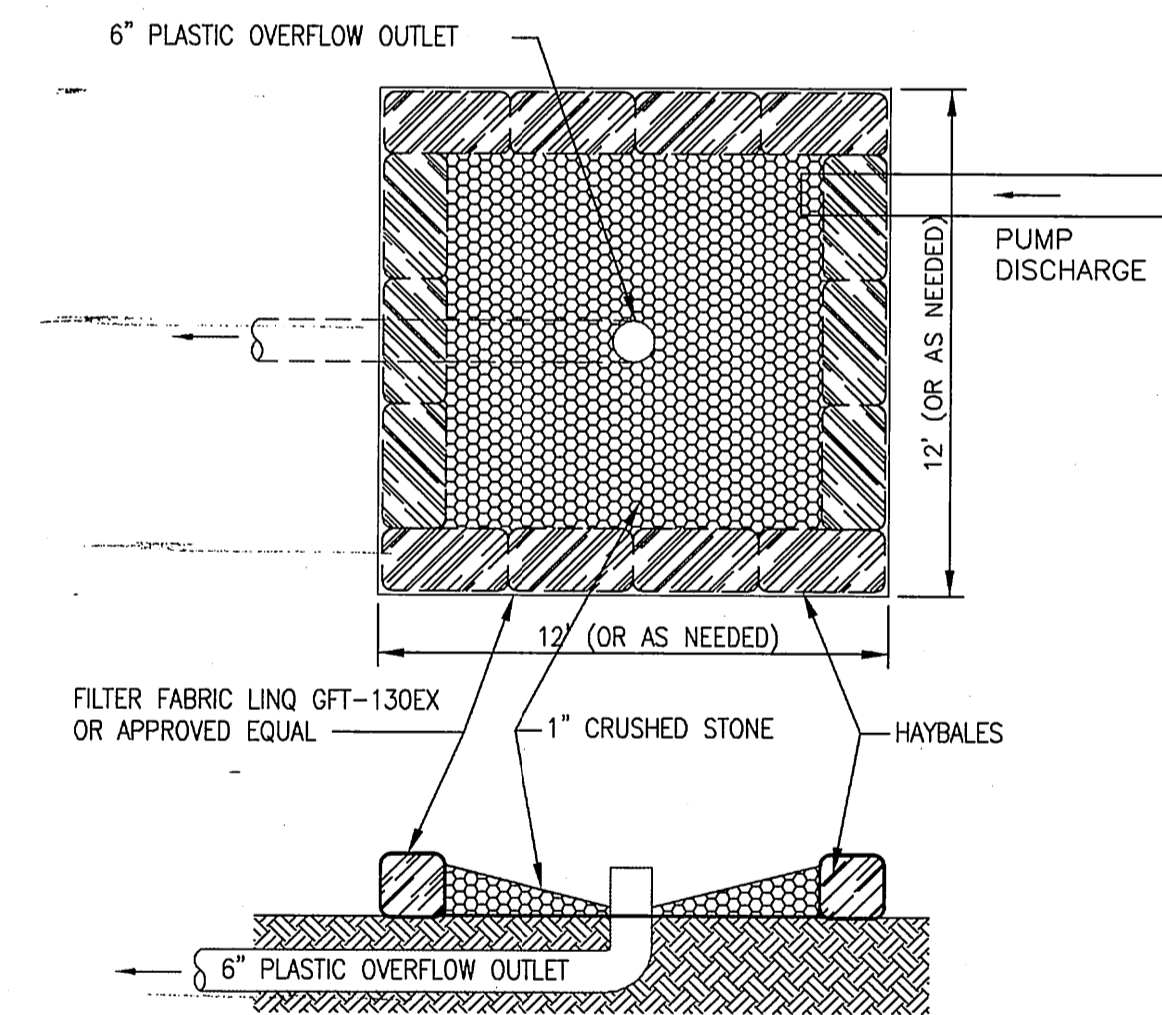


PLAN  
STAKED HAY BALES  
DETAIL B  
NO SCALE



SEDIMENT FENCE WITH HAYBALES

DETAIL D  
NO SCALE




NOTES:  
1. 12" x 12" ARE APPROXIMATE DIMENSIONS FOR DEWATERING BASIN. DEPENDING UPON DISCHARGE TO THE BASIN THE DIMENSIONS MAY BE ADJUSTED BY THE ENGINEER.  
2. ALTERNATE DESIGNS SHALL BE APPROVED BY THE ENGINEER PRIOR TO IMPLEMENTATION.

TEMPORARY PUMP DEWATERING DISCHARGE BASIN  
(IF REQUIRED)

DETAIL E  
NO SCALE

**PRELIMINARY**  
NOT TO BE USED FOR CONSTRUCTION

						 <b>The United Illuminating Company</b> 157 Church St. New Haven, Ct. 06506			BRIDGEPORT ENERGY SOIL EROSION AND SEDIMENT CONTROL DETAILS		
0	04-11-05	INITIAL ISSUE	CC	ACM		Chkd.	Design Engr.	Design Supv.			25250-801
No	Date	Revision	By	Chkd.	Engr. Supv.						