

**Docket No. 272 – Development and Management Plan Inspection**

**The Connecticut Light and Power Company Certificate of Environmental Compatibility and Public Need for the construction of a new 345-kV electric transmission line and associated facilities between Scovill Rock Switching Station in Middletown and Norwalk Substation in Norwalk, Connecticut, including reconstruction of portions of existing 115-kV and 345-kV electric transmission line, the construction of Beseck Switching Station in Wallingford, East Devon Substation in Milford, (and Singer Substation in Bridgeport), modifications at Scovill Rock Switching Station and Norwalk Substation, and the reconfiguration of certain interconnections.**

**Segment 1a Inspection**

**Date:** May 21, 2007

**Inspector:** Matthew Creighton

**Location:** Segment 1a – Scovill Rock Switching Station to Chestnut Junction, Oxbow Junction to Beseck Switching Station (excluding Royal Oak Bypass), and Black Pond Junction to Beseck Switching Station

**Rainfall:** 0.85” of precipitation was recorded in the week prior to inspection, with 0.65” on 5/16 (NOAA data at Meriden, CT).

<b>Areas of Inspection</b>	<b>Observation</b>	<b>Recommended Action</b>	<b>Corrected Action</b>
<b>Access roads and adjacent roadways</b>			
<b>Most work areas (including Oxbow Junction, Black Pond, Contractor Receiving Yard, Valley View Dr., Rte. 157, High Hill Rd., Flening Rd, East Main Street)</b>	<b>Access roads and stone tracking pads are in place at the ROW entrance in these locations. Associated roadways were free of project related sediment at this time. 5/21/07</b>	<b>Sweep the roadways and refresh stone as needed. Clean existing controls in CBs as necessary. 5/21/07</b>	<b>Not Applicable (NA)</b>
<b>Scovill SS west to Chestnut Junction</b>	<b>An existing access road is in place from Scovill SS west to Rte. 9. Streams were crossed using timber mats along the access road. Silt fence remains along some of the wetlands and controls were filtering pooled run-off. Turbid water continues to pool on the access road due to ATVs. 5/21/07</b>	<b>An existing access road is in place from Scovill SS west to Rte. 9. Streams were crossed using timber mats along the access road. Silt fence remains along some of the wetlands and controls were filtering pooled run-off. Turbid water continues to pool on the access road due to ATVs. 5/21/07</b>	<b>Evaluate ATV use if feasible.</b>
	<b>Stone was in place on the access road directly to the bank of one of the streams. 5/21/07</b>	<b>Although controls are in place, avoid placing stone up to a stream to reduce impacts. 5/21/07</b>	<b>Needs evaluation</b>
<b>Oxbow Junction to Beseck SS</b>	<b>Controls (filter socks,</b>	<b>Continue to add controls</b>	<b>NA at this time.</b>

Areas of Inspection	Observation	Recommended Action	Corrected Action
Haddam Quarter Rd. (Oxbow Junction) To Foot Hills Rd.	haybales) remain in place along the road where needed. The area is currently dry. 5/21/07	where needed, i.e. mulch, check dams, silt fence. Sweep roadway as needed. 5/21/07	
Foot Hills Rd. to Johnson Lane	Access road crosses a small stream twice using timber mats but stops before the “no access area” to Johnson Lane. 5/21/07	Continue to monitor and adjust controls as needed. 5/21/07	NA
Arbutus Street	The CB controls appear to be working properly. No sediment was noted in the wetlands at the outlet. 5/21/07	Monitor access entrance and maintain CB controls when needed. Sweep roadway as needed. 5/21/07	Needs to be monitored.
Black Walnut Dr.	Controls are in place along the base of slope of the access road and at the culverted stream. Some stone has been pushed into the swales and haybales along the road. 4/2-5/21/07	New stone layers should reduce run-off on steeper slopes. If necessary, pull back stone from the controls along the edges of the road. 4/2-5/21/07 See erosion control section. 5/21/07	NA at this time
Little Lane	Access includes timber mats and a (temporary) culvert to cross a section of wetlands and small stream. Clear water was flowing through the controls and off site. 5/21/07	Monitor and adjust controls, as needed. Culverts are temporary and are will be restored at the completion of work. 5/21/07	NA
Cherry Hill Rd.	A small steep access road is in place off the transfer station access road east of Cherry Hill Rd. Timber mats are in place to the west 5/21/07	Some steeper slopes were noted here, continue to watch for run-off and add controls as needed. 5/21/07	NA
Durham Rd	No active access road construction was observed this week west of Durham Rd. Timber mats are in place for accessing pads in wetlands. 5/21/07	Add controls as needed near wetlands. Sweep roadways and refresh stone as necessary to prevent tracking. 5/21/07	NA
Rte. 157 (east) & Elihu Dr.	A small section of stone access road is in place,	Sweep roadways and refresh stone as necessary	NA.

Areas of Inspection	Observation	Recommended Action	Corrected Action
<p>Rte. 157 (west) Private Driveway</p>	<p>and timber mats remain through the wetlands towards the golf course. 5/21/07</p> <p>Private dirt driveway being used to access a pad site. A section of lawn was damaged from equipment accessing the ROW. 4/23-5/21/07</p>	<p>to prevent tracking. Continue to use appropriate crossing methods in the wetland. 5/21/07</p> <p>Maintain and adjust controls as needed. Work with landowner to repair the area of lawn as needed. 4/23-5/21/07</p>	<p>Needs attention and evaluation.</p>
<p>Powder Hill Rd</p>	<p>The access road to the east and west of Powder Hill Rd. has stone, culverts, drainage ditches, filter socks and sediment trap areas in place. The water flowing from the site was clear during this inspection. 5/21/07</p>	<p>Continue to adjust and maintain controls. Good efforts have been noted 5/21/07</p>	<p>NA</p>
	<p>Work in this area is complete for now, which reduces potential for erosion and sediment tracking. 5/21/07</p>	<p>Continue to monitor and stabilize as necessary. 5/21/07</p>	<p>Active work is complete for now.</p>
	<p>The turbid run-off that had been retained at the timber mat crossing at the bottom of the slope has receded and the area is dry. 5/14/07</p>	<p>Continue to monitor area closely until stabilized and crossing is removed. 5/21/07</p>	<p>NA</p>
<p>Valley View Dr</p>	<p>A few minor scuffmarks from equipment were noted on the road surface 5/21/07</p>	<p>Continue to monitor roadway and repair if needed. 5/21/07</p>	<p>NA at this time</p>
<p>Black Pond Junction to Beseck SS ROW, North of Beseck SS</p>	<p>Water bars are in place along the access road to divert turbid run-off to lines of staked haybales. 5/21/07</p>	<p>Continue to monitor and adjust controls as needed. 5/21/07</p>	<p>Water bars and haybales are maintained proactively.</p>
	<p>The stone tracking pads have helped to stabilize soils and muddy areas 5/21/07</p>	<p>Monitor and maintain tracking pad and continue to work on problem areas. 5/21/07</p>	<p>NA</p>
	<p>A new stone access way</p>	<p>Monitor area for run-off</p>	<p>NA.</p>

Areas of Inspection	Observation	Recommended Action	Corrected Action
<p><b>Fleming Road</b></p> <p><b>South of High Hill Rd. crossing (vicinity of East Meriden SS)</b></p> <p><b>North of High Hill Rd. crossing (north to Black Pond)</b></p>	<p><b>and pad site are in place north of Beseck SS. 5/21/07</b></p> <p><b>Stone tracking pads should be added to the alternate access road off Fleming Rd. if it will continue to be used. 5/21/07</b></p> <p><b>Access road crosses several streams and wetlands in this section. 5/21/07</b></p> <p><b>Two access roads are in place north off High Hill Rd. 5/21/07</b></p> <p><b>Access road construction continues off East Main Street, within a condo development as work progresses to new pad sites. Area looks good; no tracking noted. 5/21/07</b></p>	<p><b>and add controls as needed. 5/21/07</b></p> <p><b>Add controls/tracking pad at ROW access points to prevent sediment tracking. Sweep roadway on a regular basis. 5/21/07</b></p> <p><b>Continue to adjust and maintain controls as needed. See erosion controls section. 5/21/07</b></p> <p><b>Monitor for tracking and adjust controls as necessary. 5/21/07</b></p> <p><b>Monitor tracking into the development parking lot and sweep as needed. Add controls as work progresses. 5/21/07</b></p>	<p><b>Needs evaluation</b></p> <p><b>NA</b></p> <p><b>NA at this time.</b></p> <p><b>NA at this time.</b></p>
<p><b>Foundation and site construction Scovill SS west to Chestnut Junction</b></p> <p><b>Oxbow Junction to Beseck SS Oxbow Jct. to Haddam Quarter Rd. to Foot Hills Rd. to Arbutus Street</b></p>	<p><b>Only clearing and access at this time. 5/21/07</b></p> <p><b>Foundation drilling was underway at Oxbow Jct. 5/21/07</b></p> <p><b>Foundations were being drilled off Haddam Quarter Rd., upgradient of the wetland. 5/21/07</b></p> <p><b>No new work noted since a pole was installed west of Arbutus St. 5/21/07</b></p> <p><b>Pads are in place off Foot Hills Rd and Johnson Ln. Controls remain above wetlands and around pads in both locations 5/21/07</b></p>	<p><b>Monitor and add controls as needed. See erosion control section. 5/21/07</b></p> <p><b>Monitor and add controls as needed. 5/21/07</b></p> <p><b>Continue to monitor and adjust controls. See erosion control section. 5/21/07</b></p> <p><b>Continue to monitor and adjust controls. 5/21/07</b></p> <p><b>Add controls as needed and monitor wetlands. See erosion control section. 5/21/07</b></p>	<p><b>NA</b></p> <p><b>NA</b></p> <p><b>NA</b></p> <p><b>NA</b></p> <p><b>NA</b></p>

Areas of Inspection	Observation	Recommended Action	Corrected Action
Black Walnut Dr. (east)	No additional work was noted here this week. 5/21/07	Continue to monitor. 5/21/07	NA
South of Contractor Yard Along Rte. 17 and Little Lane	Poles installation occurred off Little Ln. Permitted foundation drilling also continued within wetlands. 5/21/07	Monitor and add/adjust controls as needed. See erosion control section. 5/21/07	Settling tanks were on site to hold slurry.
Cherry Hill Rd. (east & west)	Pole installation was underway here. 5/21/07	Continue to monitor. See dewatering section. 5/21/07	NA
Rte. 157 (east & west) & Elihu Drive.	Pole installation was underway here. 5/21/07	Continue to monitor. 5/21/07	NA
Powder Hill Rd.	Pole installation is complete in this section (west & east). 5/21/07	Continue to monitor. See access road and erosion section. 5/21/07	NA
Black Pond Junction to Beseck SS ROW, North of Beseck SS to East Meriden Substation	Pole installation, line pulling complete for now in this section to E. Meriden SS. Line work continues. 5/21/07	Monitor and adjust controls as needed. See access roads and erosion control section. 5/21/07	NA.
South/north of High Hill Rd. crossing (vicinity of East Meriden SS to Black pond)	Foundation drilling and installation continue south of E. Main St. 5/21/07	Continue to monitor and see erosion control and dewatering section for more details. 5/21/07	NA
	Grading and pad installation continue north of East Main Street. 5/21/07	Continue to monitor and see erosion control section. 5/21/07	NA
Black Pond	No new work noted following the pad installation for the next pole. 5/21/07	Continue to monitor and add controls as needed. 5/21/07	NA
Erosion and sediment controls  Scovill SS west to Chestnut Junction	Silt fence remains in some areas along the access road to filter run-off pooling there. Turbid water that is ponding on the access road is a result of ATVs. 5/21/07	Continue to add controls when entering sites for clearing and as soon as soil is disturbed, when resource areas are adjacent. 5/21/07	Evaluate ATV use if feasible.
Oxbow Junction to Beseck SS Haddam Quarter Rd. To Foot Hills Rd. (east)	Controls (Haybales, filter socks) were filtering any water as it leaves the site. The one in the	Add controls as needed upgradient from wetlands. Monitor	Needs evaluation.

Areas of Inspection	Observation	Recommended Action	Corrected Action
Foot Hills Rd. (west) and Arbutus Street	<p>The area is dry. Foundation drilling underway near wetlands. Controls are needed upgradient of the wetlands. 5/21/07</p> <p>Silt fence, filter socks and hay mulch and other controls remain along the timber mat wetland crossing and to filter run-off in all these locations. 5/21/07</p>	<p>wetlands for run-off. 5/21/07</p> <p>Monitor controls and adjust as needed. Add controls along access road at run-off point. 5/21/07</p>	NA
Black Walnut Dr.	<p>Some of the recently installed stone was pushed into controls along the road. 4/2-5/21/07</p> <p>Some sediment accumulation was noted in a stone sediment trap along the access road. 5/14-5/21/07</p> <p>Bark mulch, haybales and filter socks remain along the steep slope of the pad upgradient of Ball Brook. A detention basin is also in place. 5/21/07</p>	<p>Continue to adjust controls as needed and pull stone back from swales if necessary. 4/2-5/21/07</p> <p>Remove accumulated sediment when feasible to provide full capacity of controls. 5/14-5/21/07</p> <p>Continue to monitor and adjust controls to protect the resource area downgradient. 5/21/07</p>	NA  Needs proactive attention when feasible
Contractor Receiving Yard and Storage Area	<p>A few fiber rolls have been run over along the access drive. 2/12-5/21/07</p> <p>Silt fence and fiber rolls are in place at the perimeter of the yard and along drainage areas/swales but several sections have fallen. 4/23-5/21/07</p> <p>1B work is underway within the contractor receiving yard. Several controls were removed to access the new ROW clearing. 5/21/07</p>	<p>Repair/replace damaged fiber rolls. 2/12-5/21/07</p> <p>Continue to add, maintain, and monitor controls as necessary. Repair fallen/untoed sections of silt fence 4/23-5/21/07</p> <p>Clearing is part of the 1B D&amp;M plan. Please view 1B reports for more information. Contractors should coordinate to keep adequate controls in</p>	Needs repair when feasible.  Needs attention  NA (Not jurisdictional to this D&M)

Areas of Inspection	Observation	Recommended Action	Corrected Action
<p><b>South of Contractor Yard Along Rte. 17 and Little Lane</b></p>	<p><b>Drilling continues within a wetland here. No turbid run-off noted as it was well controlled with settling tanks. 5/21/07</b></p>	<p><b>place. 5/21/07</b> <b>Monitor and reinforce controls to ensure they adequately filter run-off. 5/21/07</b></p>	<p><b>Slurry/run-off well controlled at the wetland drill site.</b></p>
<p><b>Cherry Hill Rd. (west)</b></p>	<p><b>Timber mats were installed but controls have not been added. (noted 4/2) Foundation drilling was complete. 5/21/07</b></p>	<p><b>Continue to monitor slope for tracking and erosion. Ensure that controls are adequate to control run-off. 5/21/07</b></p>	<p><b>NA</b></p>
<p><b>Durham Rd.</b></p>	<p><b>Wetland crossings were in place west of Durham Rd. within the ROW. 5/21/07</b></p>	<p><b>Erosion controls may be needed along the edges of the new access road if sedimentation is noted Monitor surrounding wetlands closely. 5/21/07</b></p>	<p><b>Needs to be monitored</b></p>
<p><b>Rte. 157 (east &amp; west) &amp; Elihu Dr.</b></p>	<p><b>Controls remain along pad sites. Foundations complete off Elihu Dr. and Rte. 157 5/21/07</b></p>	<p><b>Adjust or extend controls as work progresses in this area. 5/21/07</b></p>	<p><b>NA at this time.</b></p>
<p><b>Powder Hill Rd.</b></p>	<p><b>Slopes remain mulched and seeded, drainage swales with culverts and haybale check dams, sediment basins/ traps, haybales, filter socks, and stone check dams are all in place. Grass growth was noted from the hydroseed application. 5/21/07</b></p> <p><b>Filter socks and haybales remain upgradient of the stream and pond (both sides) at the base of slope. Poned turbid run-off was still retained here by the controls but continues to recede. Sediment in pond was settling. Vegetation is helping to trap sediment before it reaches streams. 5/21/07</b></p>	<p><b>Adjust controls as necessary to prevent sediment from leaving the site or entering the pond. Stream crossings/culverts are temporary and will be removed at the end of the work. Continue good stabilization efforts 5/21/07</b></p> <p><b>Controls should continue to be monitored and adjusted above the stream as needed Remove sediment accumulated around the controls and vegetation. 5/21/07</b></p>	<p><b>Grass cover is starting to establish.</b></p> <p><b>Needs proactive attention when feasible</b></p>

Areas of Inspection	Observation	Recommended Action	Corrected Action
East of Beseck SS	At the spot adjacent to the wetlands east of Beseck SS, fiber rolls (filter socks) remain adjacent to the timber mat pads but sediment (likely from snow clearing) has been piled on and over the socks. 4/2-5/21/07	Adequately contain all sediment; the soil in the wetland will have to be removed carefully by hand. 4/2-5/21/07	Needs attention.
Black Pond Junction to Beseck SS ROW, North of Beseck SS to East Meriden Substation  Fleming Road	Pole installation is complete adjacent to the edge of the pond. Sediment accumulation is at the capacity of the controls immediately adjacent to the water. 4/30-5/21/07	Remove sediment from controls. See erosion control section. 4/30-5/21/07	Needs attention.
South of High Hill Rd. (vicinity of East Meriden Substation)	The redirected stream splits, flowing partially through a culvert and partially through the center of the timber pad site. The banks and adjacent, exposed soil remain stabilized with erosion control mats. Pole installation was complete and streams had very low to no flow. 5/21/07	Controls may need to be reinstalled in the channel when work in this area continues. Controls or regular cleaning will be needed on the timber mats as well to prevent sediment from seeping through. Remove sediment accumulation along the controls as needed. 5/21/07	Needs proactive attention when feasible.
	Filter socks are in place along the edge of wetland areas. Stream banks remain mulched with hay and partial bales. 5/21/07	Ensure the controls are adequate for run-off in this area. 5/21/07	NA
	Area north of E. Meriden SS has reinforced controls to prevent turbid water from entering the nearby pond but filter socks are still not fully in place. 4/23-5/21/07	Ensure the controls are adequate for run-off in this area. Toe-in fiber rolls to ensure water doesn't channel underneath. 4/23-5/21/07	Controls were reinforced but needs some attention.
High Hill Rd. (north to Black Pond)	A soil stockpile was noted on the access road within controls but immediately adjacent to undisturbed wetlands. 5/21/07	Remove/relocate the stockpile and avoid placing materials near wetlands. 5/21/07	Needs attention



Areas of Inspection	Observation	Recommended Action	Corrected Action
<p><b>Black Pond</b></p>	<p>The timber mat pad site in/adjacent to wetlands here has controls in place but sediment tracking was noted on the mats and from an adjacent slope. 4/2-5/21/07</p> <p>Controls in place along slopes on both sides of the wetlands. 5/21/07</p> <p>Controls remain in place upgradient from wetlands off East Main Street. Drilling was occurring but sediment issues were not observed. Access road and pad site construction continues and will need extended controls as work progresses. 5/21/07</p>	<p>Adjust controls as needed. Stabilize adjacent areas in an attempt to reduce tracking to the mats. 4/2-5/21/07</p> <p>Monitor site for run-off and continue to adjust controls as necessary. 5/21/07</p> <p>Monitor controls closely. Add controls as needed along the slope and wetlands near the new pad site and access road. 5/21/07</p>	<p>NA</p> <p>NA</p> <p>Some controls in place, more controls needed in new work areas.</p>
<p><b>Inland Wetland and Watercourse encroachment and mitigation</b></p> <p>Most access areas (including ROW North of Beseck SS; Arbutus St.; Little Lane; Durham Rd.; Powder Hill Rd. Black Walnut Dr.; Johnson Ln.; Foot Hills Rd.)</p> <p>Oxbow Junction to Beseck SS Haddam Quarter Rd. To Foot Hills Rd., Johnson Lane</p> <p><b>Contractor Storage Yard</b></p>	<p>ACOE permit is in hand. 1/22/07</p> <p>A number of wetland crossings (via timber mats) were noted. Adjacent controls were installed. 5/21/07</p> <p>Permitted drilling was occurring in wetlands off Haddam Quarter Rd. 5/21/07</p> <p>Slight turbidity was present at Johnson Ln. due to past heavy rains. 5/21/07</p> <p>Perimeter controls are deteriorating in spots and should be repaired. The suspended sediment in the adjacent pond is settling and does not appear to be related to</p>	<p>Perform work in wetlands under the permitted guidelines. 5/21/07</p> <p>Monitor closely for sedimentation and add controls as needed. All crossings are temporary and will require restoration at the end of the work. 5/21/07</p> <p>Continue to monitor controls and watch run-off carefully. 5/21/07</p> <p>Monitor and adjust controls as needed. See erosion control section. 5/21/07</p> <p>Adjust/repair controls as needed around the site. 5/21/07</p>	<p>NA</p> <p>NA</p> <p>NA at this time</p> <p>NA at this time</p> <p>Continue to monitor pond. Controls need attention.</p>

Areas of Inspection	Observation	Recommended Action	Corrected Action
	<p>appear to be related to the site at this time. 5/14-5/21/07</p> <p>A snapping turtle was noted burrowing itself in the substrate of the pond the last few weeks which created observable turbidity. Sediments appear very fine and easily disturbed here. 5/21/07</p> <p>Clearing was occurring within wetlands at the receiving yard as part of the segment 1B work. 5/21/07</p>	<p>Continue to monitor and avoid contributing sediment to the pond. Although not state listed spp, generally monitor work area for turtles. 5/21/07</p> <p>Not jurisdictional to this D&amp;M Plan. See 1B reports for more information. 5/21/07</p>	<p>NA</p> <p>NA (not jurisdictional to this D&amp;M Plan)</p>
Durham Rd.	<p>Access at Durham Rd remains halted at a deeper area in the wetland that is difficult to cross. Fish noted in streams. 5/21/07</p>	<p>Ensure that construction windows and access limitations continue to be upheld here. 5/21/07</p>	<p>NA at this time</p>
Powder Hill Rd.	<p>Several smaller streams remain culverted. Numerous adjustments were made to filter run-off. Turbid run-off that had been retained by controls has receded. 5/21/07</p>	<p>Continue to monitor and add controls as needed. All crossings are temporary and will require restoration at the end of the work. See erosion controls section. 5/21/07</p>	<p>No turbid run-off noted.</p>
East of Beseck SS	<p>Timber mat staging areas are in and adjacent to wetlands. Sediment was noted on and beyond the filter sock at the wetland's edge. 4/2-5/21/07</p>	<p>Adequately contain all sediment; the soil in the wetland will have to be removed carefully by hand. 4/2-5/21/07</p>	<p>Needs attention</p>
Black Pond Junction to Beseck SS Fleming Rd.	<p>Pole installation is complete adjacent to the edge of the pond. Sediment accumulation is at the capacity of the controls. 4/30-5/21/07</p>	<p>Remove sediment from controls before it spills over into the wetland. See erosion control section. 4/30-5/21/07</p>	<p>Needs attention.</p>
High Hill Rd. South to East Meriden Substation and north to Black Pond	<p>Pole installation is complete within the stream/wetlands. The</p>	<p>Continue to stabilize soils and adjust controls as necessary to protect</p>	<p>NA</p>

Areas of Inspection	Observation	Recommended Action	Corrected Action
	<p>flow is being re-routed through a riprap channel and culvert. Erosion control mats are in place at the top of bank. 5/21/07</p>	<p>wetlands. Stabilize adjacent area as soon as possible. See erosion control section for more details. 5/21/07</p>	
<p>State species of concern, threatened and endangered species.</p> <p>Multiple ROW areas including Scovill SS; Haddam Quarter Rd. To Foot Hills Rd.; Johnson Lane; Powder Hill Rd.; Contractor Storage Yard Pond; East of Beseck SS</p>	<p>Potential habitat for wood turtles exists at Ball Brook in this section. Contractors have avoided crossing this area through the access road in from Black Walnut Dr. However, the final pad is installed upgradient from the habitat. 5/21/07</p> <p>A variety of wildlife has been noted in and adjacent to the majority of wetlands in the ROW at access and work areas. Turtles, frogs, fish, salamanders, tadpoles, several different types of egg masses, deer, small mammals, and wild turkeys have been observed. These are not state listed species, but indicate good habitat. 5/21/07</p> <p>Many turtles have been observed basking in the ponds south of High Hill Rd and near Fleming Rd. A spotted turtle was also noted in the wetland near Scovill Rock SS. 5/21/07</p>	<p>April 1<sup>st</sup> was the start of the active wood turtle season; contractors will require training for mitigation if work occurs in the Ball Brook habitat. Ball Brook is not scheduled to be accessed, however consider performing sweeps at this last pad as turtles do forage/migrate away from streams. 5/21/07</p> <p>Continue to be very mindful of controlling sediment and reducing access near wetlands used for amphibian breeding. Also monitor controls for effectiveness and be mindful that the controls will block foraging/migrating wildlife 5/21/07</p> <p>Although these are not state listed species, continue to be mindful of equipment movement and work activities in these areas. 5/21/07</p>	<p>Consider mitigation/sweeps in this area.</p> <p>Continue to monitor.</p> <p>Continue to monitor</p>
<p>Vegetative clearing or stabilization</p> <p>Powder Hill Rd.; Little Lane; Durham Rd; Black Walnut Dr; Valley View Dr.; Rte 157</p>	<p>Many pad sites are along slopes and may have issues with erosion during heavy rains. 5/21/07</p>	<p>Retain species approved by the D&amp;M plan wherever feasible. Temporarily stabilize exposed soil as necessary, especially in slope areas such as Beseck Mtn. 5/21/07</p>	<p><i>In all areas, be aware of limits of clearing and stick to the specifications of the D&amp;M plan.</i></p>

Areas of Inspection	Observation	Recommended Action	Corrected Action
<p><b>ROW west of Scovill Rock SS to Chestnut Junction</b></p>	<p><b>Some grass growth was noted at the hydroseeded sites off Powder Hill Rd. 5/21/07</b></p> <p><b>No issues were noted in the areas of new clearing off East Main St. 5/21/07</b></p> <p><b>No new clearing flowing the minor clearing from Scovill Rock SS to Rte. 9 within the existing ROW. Trees have been felled and stockpiled. Stumps were left to stabilize soils. Some erosion is occurring along the access road. Some controls have been installed. 5/21/07</b></p>	<p><b>Continue to stabilize inactive areas with vegetative cover wherever feasible. 5/21/07</b></p> <p><b>Monitor new area for run-off. See erosion controls section. 5/21/07</b></p> <p><b>Continue to retain stumps for stabilization and add controls as needed as work continues. Clearing crews should continue to install controls as soils are disturbed along the ROW and make sure controls are in place before leaving the site. 5/21/07</b></p>	<p><b>Grass growth noted.</b></p> <p><b>NA</b></p> <p><b>Continue to evaluate.</b></p>
<p><b>Dewatering Oxbow Junction to Beseck SS</b></p> <p><b>Black Walnut Dr.</b></p> <p><b>Cherry Hill Rd. (west)</b></p> <p><b>Little Lane</b></p> <p><b>Black Pond Junction to Beseck SS</b> <b>North of Beseck SS to East Meriden Substation</b></p> <p><b>Fleming Rd.</b></p>	<p><b>Several settling basins remain in place off Black Walnut Dr. 5/21/07</b></p> <p><b>Settling tank used for dewatering for drilling several weeks ago. 5/21/07</b></p> <p><b>Active drilling was occurring in wetlands here. Settling tanks were used appropriately to control run-off/slurry. 5/21/07</b></p> <p><b>No active dewatering noted at this time in the High Hill Rd. area. Pole installation is complete. Slurry was well controlled. 5/21/07</b></p> <p><b>Another containment area remains near the pad site in this section. 5/21/07</b></p>	<p><b>Continue to use settling basins as needed. Monitor capacity of the basin when in use. 5/21/07</b></p> <p><b>When work is done remove settling tanks and pump trucks as needed. 5/21/07</b></p> <p><b>Continue to use settling tank for slurry control and monitor the area. 5/21/07</b></p> <p><b>None at this time. 5/21/07</b></p> <p><b>Continue to monitor capacity of the basin and adjust controls as necessary. 5/21/07</b></p>	<p><b>NA</b></p> <p><b>NA.</b></p> <p><b>Settling tanks were used to control slurry and run-off</b></p> <p><b>NA</b></p> <p><b>NA</b></p>

Areas of Inspection	Observation	Recommended Action	Corrected Action
<b>Blasting</b>	<b>No blasting is proposed. 5/21/07</b>	<b>None 5/21/07</b>	
<p data-bbox="186 415 381 499"><b>Spills, soils and material storage All active areas</b></p> <p data-bbox="186 856 430 966"><b>Oxbow Junction to Beseck SS Contractor Receiving Yard and Staging Area</b></p> <p data-bbox="186 1201 365 1228"><b>Powder Hill Rd.</b></p> <p data-bbox="186 1375 454 1432"><b>Black Pond Junction to Beseck SS</b></p>	<p data-bbox="487 415 787 504"><b>Spill controls move from site to site with the equipment. 5/21/07</b></p> <p data-bbox="487 571 803 787"><b>Concrete washout containment was noted in the form of lined, dug basins off Valley View Rd, Cherry Hill Rd (east), and in several other locations. 5/21/07</b></p> <p data-bbox="487 856 803 1176"><b>Materials are being stored and structures staged in this area. Fuel tanks are in place on their stone spill control pad. Both nozzles were in a 5-gallon bucket with spill pad. Fire extinguishers and spill kits are located near the fuel tanks. 5/21/07</b></p> <p data-bbox="487 1207 795 1333"><b>Another portable sanitary facility was knocked over off Powder Hill Road. 5/21/07</b></p> <p data-bbox="487 1396 779 1564"><b>Site is very active and equipment and supplies are being stored here. A large spill kit is stored onsite. 5/21/07</b></p> <p data-bbox="487 1654 771 1837"><b>Several new small equipment drips were seen along the access road at the new site off East Main Street. 5/7-5/21/07</b></p>	<p data-bbox="824 415 1128 535"><b>Always use spill control materials when working on equipment and during refueling. 5/21/07</b></p> <p data-bbox="824 571 1128 829"><b>Provide appropriate containment for washouts. Be especially careful of concrete containment near wetlands. Plan to remove the material once work is complete. 5/21/07</b></p> <p data-bbox="824 856 1128 1144"><b>Always use spill control materials when working on equipment and during refueling. Continue to locate hazardous materials and equipment away from wetlands inlets such as culverts and CBs. when possible. 5/21/07</b></p> <p data-bbox="824 1207 1128 1365"><b>Continue to store facilities away from wetlands in case of a spill. Secure or remove this facility. 5/21/07</b></p> <p data-bbox="824 1396 1128 1627"><b>Always store equipment and supplies away from sensitive areas. Monitor and maintain equipment as needed and provide housekeeping on a regular basis. 5/21/07</b></p> <p data-bbox="824 1654 1128 1837"><b>Continue to monitor and maintain equipment. Repair leak as soon as possible and keep leaking equipment away from wetlands. 5/7-5/21/07</b></p>	<p data-bbox="1157 415 1201 441"><b>NA</b></p> <p data-bbox="1157 571 1404 661"><b>Concrete washout basins were noted in several locations.</b></p> <p data-bbox="1157 856 1429 919"><b>A stone pad is in place for spill control</b></p> <p data-bbox="1157 1207 1356 1234"><b>Needs attention.</b></p> <p data-bbox="1157 1396 1339 1423"><b>NA at this time</b></p> <p data-bbox="1157 1654 1347 1682"><b>Needs attention</b></p>
<b>Additional Observations</b>	<b>Weather is getting warmer and contractors should continue seeding disturbed areas for</b>	<b>Seed areas where work is complete or will be left unworked for longer than 1 month. 5/21/07</b>	<b>Needs evaluation.</b>

<b>Areas of Inspection</b>	<b>Observation</b>	<b>Recommended Action</b>	<b>Corrected Action</b>
	<b>temporary stabilization as soon as possible. 5/21/07</b>		

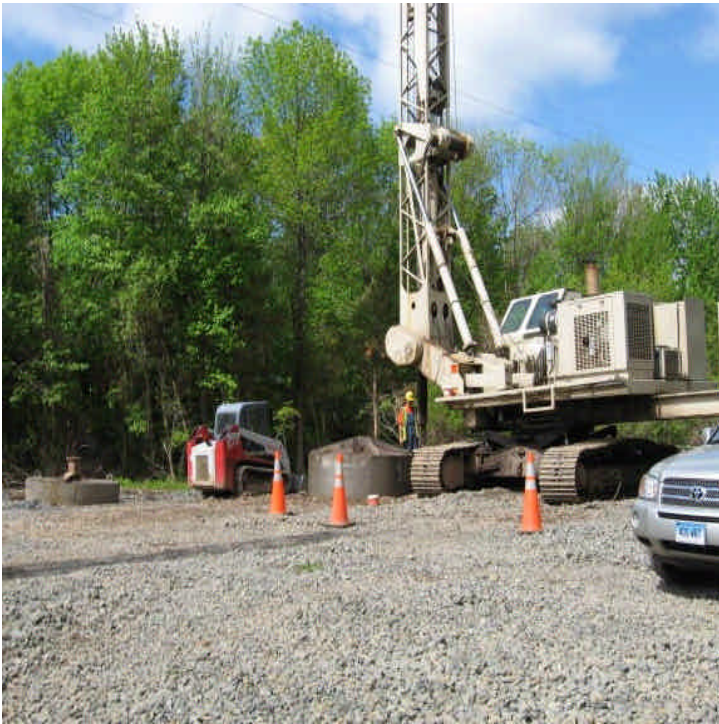
**Next likely scheduled inspection:** Tuesday May 29, 2007

**I have personally examined and am familiar with the information submitted in this document and all attachments and certify that based on reasonable investigation, including my inquiry of those individuals responsible for obtaining the information, the submitted information is true, accurate and complete to the best of my knowledge and belief, and I understand that any false statements made in this document or its attachments may be punishable as a criminal offense in accordance with Section 22a-6 under Section 53a-157 of the Connecticut General Statutes.**

**Field Inspector:** Matthew Creighton, BSC Group

**Reviewer:** Diana Walden, BSC Group





**View of foundation drilling off Haddam Quarter Road.**



**Numerous painted turtles basing within the pond off Haddam Quarter Rd. Although not a state listed species, be mindful during equipment movement in this area.**



**Haybale line at the final pad upgradient from Ball Brook off Black Walnut Dr.**



**View looking across Ball Brook off Black Walnut Dr. towards Arbutus St.**





**Wetland crossing off Foot Hills Rd. No turbid run-off was noted.**



**Amphibian egg masses and tadpoles were noted in the ponded water adjacent to a timber mat crossing off Johnson Ln. Slight sedimentation was noted. Continue to prevent turbidity and sedimentation here to the extent possible.**



**View of the controls and clearing at 1B from the contractor receiving yard.**



**Permitted drilling was occurring within wetlands off Little Lane. A settling tank was in place for any slurry containment.**





**View of the controls at the wetland crossing off Little Lane.**



**Structure work noted off Cherry Hill Rd.**



**View of well installed haybales and fiber rolls at the timber mat crossing off Powder Hill Rd. Sediment is filtered from the run-off before it flows off-site in this area. Turbid water previously retained here has fully receded.**



**Hydroseed and haybales remain in work areas west of Powder Hill in an effort to restore the area.**





**A portable sanitary facility west of Powder Hill Rd. has tipped over. This should be righted and secured.**



**Looking west from Beseck Mountain towards the construction at Beseck SS**



**New pad site and stone access area north of Beseck SS.**



**Line installation continues near East Meriden SS.**





**Controls remain in place along the pond north of Beseck SS to E. Meriden SS off Fleming Rd where pole installation is complete. However, sediment has filled controls to capacity immediately adjacent to the pond and needs to be removed**



**Sediment pile located on access road in wetlands south of High Hill Rd. Remove pile and locate all stockpiles away from wetlands.**



**Site access north of East Main Street. Controls/filter socks were installed.**



**Site work north of East Main Street. Controls need to be extended as work continues.**