

Docket No. 272 – Development and Management Plan Inspection

The Connecticut Light and Power Company Certificate of Environmental Compatibility and Public Need for the construction of a new 345-kV electric transmission line and associated facilities between Scovill Rock Switching Station in Middletown and Norwalk Substation in Norwalk, Connecticut, including reconstruction of portions of existing 115-kV and 345-kV electric transmission line, the construction of Beseck Switching Station in Wallingford, East Devon Substation in Milford, (and Singer Substation in Bridgeport), modifications at Scovill Rock Switching Station and Norwalk Substation, and the reconfiguration of certain interconnections.

Segment 1a Inspection

Date: February 26, 2007

Inspector: Matthew Creighton

Location: Segment 1a – Scovill Rock Switching Station to Chestnut Junction, Oxbow Junction to Beseck Switching Station (excluding Royal Oak Bypass), and Black Pond Junction to Beseck Switching Station

Rainfall: Total of 0.75” rain recorded between 2/20–2/26 with 0.35” of the total reported on 2/26 (NOAA data at Meriden, CT).

Areas of Inspection	Observation	Recommended Action	Corrected Action
Access roads and adjacent roadways East of Scovill Rock	No sediment tracking was noted. 2/26/07	The work noted to the east of Scovill station may not be M/N project related. 2/26/07	Not Applicable (NA)
Oxbow Junction, Black Pond, Little Lane, Contractor Receiving Yard, Rt. 17, Powder Hill Rd.	Access roads and stone tracking pads are in place at the ROW entrance. Associated roadways were free of project related sediment at this time. 2/26/07	Sweep the roadways and refresh stone as needed. Clean existing controls in CBs as necessary. 2/26/07	NA
Haddam Quarter Rd. To Foot Hills Rd.	The pond adjacent to the access road has some haybales in place but more may be added to prevent sedimentation as needed, especially as work resumes. 2/26/07	Continue to add controls where needed, i.e. mulch, check dams, silt fence, to control sediment and prevent erosion. Clean roadway as needed. 12/5/06-2/26/07	NA
Arbutus Street	The CB controls appear to be working properly. No sediment was noted in the wetlands at the outlet. 2/26/07	Monitor access entrance and maintain CB controls when needed. 2/26/07	NA
	An access road is in place west of Arbutus. The portion crossing the edge	Monitor controls and adjust as needed. 2/26/07	NA

Areas of Inspection	Observation	Recommended Action	Corrected Action
<p>ROW, North of Beseck SS</p>	<p>of a wetland is constructed with timber mats. 2/26/07</p> <p>Water bars have been installed along the access road to divert turbid run-off to lines of staked haybales. 2/26/07</p> <p>Minor amounts of turbid water was noted leaving the Beseck SS stone exit to Carpenter Lane. This is the entrance/exit used to access Seg 1A. 2/26/07</p>	<p>Continue to monitor and adjust controls as needed. 2/26/07</p> <p>Continue to work with BSS contractors and adjust controls as needed 2/26/07</p>	<p>Water bars and haybales were added proactively.</p> <p>Coordination needed with BSS contractors.</p>
<p>ROW, East of Beseck SS</p>	<p>Access road is in place west to Beseck Mountain through several small streams and wetlands using timber mats, stone, and culverts. No turbid run-off was noted during this week's inspection. 2/26/07</p>	<p>Maintain/adjust controls as needed to filter water before it enters the adjacent pond and wetlands. Stone and culverts in streams are considered temporary and will be removed at the end of work. 2/26/07</p>	<p>NA at this time. Continue to monitor.</p>
<p>Black Walnut Dr.</p>	<p>The small wetland and stream crossing is complete as access road construction continues east. The culvert has been installed. Controls were also installed along the base of slope. 2/26/07</p>	<p>See erosion control section but continue to monitor this area carefully due to slopes and adjacent wetlands. 2/26/07</p>	<p>NA at this time (controls were installed)</p>
<p>Little Lane</p>	<p>Access road connecting Little Ln. to Rte. 17 was in place. Access includes timber mats and a (temporary) culvert to cross a section of wetlands and small stream. 2/26/07</p>	<p>Monitor activities and add controls, as needed. Culverts are temporary and are will be restored at the completion of work. 2/26/07</p>	<p>NA</p>
<p>Durham Rd.</p>	<p>No active access road construction was observed this week. Timber mats are in place for accessing pads in wetlands. 2/26/07</p>	<p>Clean/sweep Durham Rd. as needed. See erosion control section 2/26/07</p>	<p>NA</p>

Areas of Inspection	Observation	Recommended Action	Corrected Action
Powder Hill Rd.	Access road is in place east and west of Powder Hill Rd as construction continues; Timber mats are in place. 2/26/07	Maintain and adjust controls as needed. 2/26/07	NA
Foundation and site construction Haddam Quarter Rd. to Foot Hills Rd.; Arbutus Street Black Walnut Dr. Black Pond North of Beseck in ROW North of Contractor Yard Along Rte. 17 and Little Lane Durham Rd. Powder Hill Rd.	Pads/staging areas and access roads are in place at this time. 2/26/07 Several poles were installed. 2/26/07 No new work noted since the installation of the monopole. 2/26/07 Ongoing foundation drilling. Site clearing and pad construction continue. 2/26/07 Three new poles have been installed. 2/26/07 No new work was observed this week. Access road construction will continue. 2/26/07 Pad construction and foundation drilling continue. 2/26/07	None. 2/26/07 None. 2/26/07 Continue to monitor and add controls as needed. 2/26/07 Continue to monitor and see erosion control and dewatering section for more details. 2/26/07 Continue to monitor and see erosion control section. 2/26/07 Monitor and adjust controls as needed. 2/26/07 Monitor and adjust controls as needed. 2/26/07	NA NA NA. NA. NA NA.
Erosion and sediment controls Haddam Quarter Rd. To Foot Hills Rd.	Haybales were in place along the access road entrance near the pond. Erosion controls may still need to be extended to encompass more areas when work resumes here. 11/21/06-2/26/07 No run-off was noted at this time but turbid run-off results after large storm events. 2/26/07	More controls, i.e. mulch, check dams, silt fence, haybales, etc., may be needed to prevent erosion along the access road slopes and prevent sediment tracking onto Haddam Quarter Rd. 11/21/06-2/26/07 Resource areas are not affected but consider adding controls or grading the access road to contain run-off. 2/26/07	Continue to evaluate when work continues. NA

Areas of Inspection	Observation	Recommended Action	Corrected Action
Arbutus Street	Silt fence remains intact at work areas and along the access road, east and west of Arbutus 2/26/07	Monitor silt fence and wetlands for sediment. 2/26/07	NA
Black Walnut Dr.	Fiber rolls/filter socks were installed at the base of slope along the access road at the new wetland crossing. 2/26/07	Continue to adjust controls as needed and ensure that the filter socks are adequate to filter run-off. 2/26/07	Controls were added at the wetland crossing.
Black Pond	Earth removal for pole installation left areas of disturbed soil 2/20-2/26/07	Monitor controls and continue to adjust as necessary. Attempt to temporarily stabilize soils. 2/20-2/26/07	NA at this time.
ROW North and East of Beseck SS	At the spot adjacent to the wetlands east of Beseck SS, fiber rolls (filter socks) remain downgradient of the timber mat pads. 2/26/07	Monitor controls closely within and adjacent to wetlands during drilling and as the ground thaws. Adjust and reinforce as necessary. 2/26/07	NA at this time.
	Water bars have been installed along the access road to redirect turbid run-off, off the road and into lines of staked haybales. Haybales are filtering run-off and clear water was flowing off site. 2/26/07	Continue to monitor run-off and ensure it just not reach wetlands. 2/26/07	Water bars and haybales installed proactively.
	Drilling is occurring within the wetland east of Beseck SS. Slurry from the excavation was being trucked to an upgradient slope and spread. 2/26/07	Sedimentation was not observed but install controls downgradient or temporarily stabilize soils when feasible. 2/26/07	Needs proactive attention.
	The line of staked haybales has been expanded adjacent to the pond north of Beseck. A large containment area remains in place upgradient of this drill site. 2/26/07	Monitor controls and ensure that all dewatering slurry be adequately contained away from the wetlands. 2/26/07 Also See Dewatering Section.	Haybale controls were added and expanded. Continue to monitor.
Contractor Receiving Yard and Storage Area	A few fiber rolls have been run over along the	Repair/replace damaged fiber roll. 2/12-2/20/07	Needs repair when feasible.

Areas of Inspection	Observation	Recommended Action	Corrected Action
	<p>access drive. 2/12-2/26/07</p> <p>Silt fence and fiber rolls are in place at the perimeter of the yard and along drainage areas/swales but a few sections of silt fence are down. No sediment was noted leaving the site. 2/26/07</p>	<p>Continue to add, maintain, and monitor controls as necessary. Silt fence should be repaired. 2/26/07</p>	<p>No sediment issues were noted but repair fence when feasible.</p>
<p>North of Contractor Yard Along Rte. 17 and Little Lane</p>	<p>Timber mats and a culvert are in place at the wetlands and stream crossing. Silt fence are in place along the mats and access pads where needed moving west along Little Ln. 2/26/07</p>	<p>Monitor and maintain controls, adjust as needed. 2/26/07</p>	<p>NA</p>
<p>Durham Rd.</p>	<p>Wetland crossings were in place in this section of ROW. 2/26/07</p>	<p>Erosion controls may be needed along the edges of the new access road if sedimentation is noted Monitor surrounding wetlands closely. 2/26/07</p>	<p>Needs to be monitored</p>
<p>Powder Hill Rd.</p>	<p>Silt fence and timber mats are in place along the access road. Haybales remain at low, saturated spots. Stone, culverts, and timber mats have been used to cross streams. Filter socks are in place for additional control downgradient of smaller stream crossings. 2/26/07</p> <p>Several of the pads east of the roadway are along a steep slope and controls may be needed to prevent erosion. Existing vegetation and root masses currently stabilize the slope but thaws will weaken soil structure. 2/20-2/26/07</p>	<p>Controls should be monitored closely and maintained regularly. Adjust controls as necessary to prevent sediment from leaving the site or entering the pond. Stream crossings/culverts are temporary and will be removed at the end of the work. 2/26/07</p> <p>Watch for changes in run-off patterns that may affect neighboring properties. Temporary stabilization and controls may be needed around construction areas located on this slope. 1/23/07-2/26/07</p>	<p>Needs to be monitored.</p> <p>Needs to be monitored</p>

Areas of Inspection	Observation	Recommended Action	Corrected Action
<p>Inland Wetland and Watercourse encroachment and mitigation</p> <p>Haddam Quarter Rd. To Foot Hills Rd.</p> <p>Contractor Storage Yard</p> <p>ROW North of Beseck SS</p> <p>ROW North of Beseck SS Arbutus Rd.; Little Lane; Durham Rd.; Powder Hill Rd. Black Walnut Dr.</p> <p>Powder Hill Rd.</p>	<p>ACOE permit is in hand. 1/22/07</p> <p>Sedimentation issues were not noted but additional controls may be needed to protect offsite and isolated wetlands when work resumes. 2/26/07</p> <p>Previous sedimentation has been noted within the wetlands and pond but ice and snow cover make observation difficult. The controls appear to be filtering turbid water flowing from the site. 2/26/07</p> <p>Timber mat staging areas are in and adjacent to wetlands. Drilling was occurring in the wetland and slurry was being removed to a slope upgradient. 2/26/07</p> <p>A number of wetland crossing (via timber mats) were noted. 2/26/07 Access at Durham Rd reached a deeper area in the wetland that is difficult to cross.</p> <p>Several smaller streams also remain culverted. Water flowing off site was clear at this time. 2/26/07</p>	<p>Perform work in wetlands under the permitted guidelines. 2/26/07</p> <p>Caution should be taken not to fuel or store equipment near any wetlands. 2/26/07</p> <p>Continue to monitor. Adjust controls as needed around the site. 2/26/07</p> <p>Monitor drilling closely and adequately contain all slurry. 2/26/07</p> <p>Monitor closely for sedimentation and add controls as needed. All crossings are temporary and will require restoration at the end of the work. 2/26/07</p> <p>Continue to monitor and add controls as needed. All crossings are temporary and will require restoration at the end of the work 2/26/07</p>	<p>NA</p> <p>NA</p> <p>NA</p> <p>Drilling will need close attention.</p> <p>NA</p> <p>Wetlands crossings were constructed appropriately.</p>
<p>State species of concern, threatened and endangered species.</p>	<p>According to the D&M plan, state-listed species are not located in the current work areas. 2/26/07</p> <p>Potential habitat for wood turtles exists at Ball Brook</p>	<p>None. 2/26/07</p> <p>Nov. 1 is the start of the dormant season;</p>	<p>NA</p> <p>Alternative access was being constructed to</p>

Areas of Inspection	Observation	Recommended Action	Corrected Action
	<p>in this section. Contractors were avoiding crossing this area by developing an access road in from Black Walnut Dr. 2/26/07</p>	<p>contractors will not require training for mitigation until spring. Ball Brook is not scheduled to be access at this time. 2/26/07</p>	<p>reach poles without crossing Ball Brook.</p>
<p>Vegetative clearing or stabilization</p> <p>Powder Hill Rd.; Little Lane; Durham Rd; Black Walnut Dr; ROW North of Beseck SS</p>	<p>Now that ACOE permits have been obtained, clearing continues in several sections 2/26/07</p> <p>Clearing continues for access road; pad construction is largely complete here. Many pad sites are along slopes and may have issues with erosion when the ground taws fully. 2/26/07</p>	<p>In all areas, be aware of limits of clearing and stick to the specifications of the D&M plan. 2/26/07</p> <p>Retain species approved by the D&M plan wherever feasible. Temporarily stabilize exposed soil as necessary, especially in slopes areas such as Beseck Mtn. 2/26/07</p>	<p>NA.</p> <p>Needs to be monitored</p>
<p>Dewatering</p> <p>ROW North of Beseck SS</p>	<p>Drilling has occurred adjacent to wetland resource areas. De-watering has occurred to the large, bermed containment basin and the filter bags within it. The basin is surrounded by haybales. 2/26/07</p> <p>East of Beseck SS, drilling was occurring within the wetland. Slurry was being moved and spread upgradient on a slope. Controls were not in place and sedimentation was occurring to the adjacent access road. 2/26/07</p>	<p>Adjust controls as necessary. All slurry from dewatering and foundation installation needs to be contained 2/26/07</p> <p>It would be a better practice to place slurry into containment areas with controls. Stabilize soil or add controls at this area. 2/26/07</p>	<p>Needs to be monitored closely during drilling</p> <p>Better containment is needed.</p>
<p>Blasting</p>	<p>No blasting is proposed. 2/26/07</p>	<p>None 2/26/07</p>	<p>NA</p>
<p>Spills, soils and material storage</p> <p>Black Walnut Dr.</p>	<p>Spill controls move from site to site with the equipment. 2/26/07</p> <p>Some materials (structure components, equipment, etc.) are being stored and</p>	<p>Always use spill control materials when working on equipment and during refueling 2/26/07</p> <p>Continue to store materials away from resource areas.</p>	<p>NA</p> <p>NA</p>

Areas of Inspection	Observation	Recommended Action	Corrected Action
<p>Contractor Receiving Yard and Staging Area</p> <p>Powder Hill Rd.</p> <p>ROW near Beseck SS</p> <p>All active areas.</p>	<p>used here.</p> <p>Materials are being stored and structures staged in this area. Fuel tanks are in place on their stone spill control pad. Fire extinguishers and spill kits are located near the fuel tanks. 2/26/07</p> <p>All fuel nozzles on site were controlled. 2/26/07</p> <p>Snow cover made observation difficult but several drip stains had previously been noted on the stone pad at the refueling tanks. 1/22/07-2/26/07</p> <p>The leaking piece of equipment noted on the ROW has been repaired. 2/26/07.</p> <p>A number of small (non-reportable) drips were noted along the access road. 2/26/07</p> <p>Drilling and foundation work has resumed and concrete washout containment will be necessary. Drilling north and east of Beseck SS will be adjacent to resource areas. 2/26/07</p>	<p>Always use spill control materials when working on equipment and during refueling. Continue to locate hazardous materials and equipment away from wetlands inlets such as culverts and CBs. when possible 2/26/07</p> <p>Make sure all fuel nozzles are being properly stored after every use. 2/26/07</p> <p>Spill controls should always be used when equipment is leaking, during refueling, and equipment maintenance. 1/22-2/26/07</p> <p>Continue to maintain all equipment. Remove affected, stained soils when feasible. 2/26/07</p> <p>Identify the piece of equipment and maintain it as necessary. 2/26/07</p> <p>Provide appropriate containment for washouts. Be especially careful of concrete containment near wetlands. 2/26/07</p>	<p>A stone pad is in place for spill control</p> <p>Nozzles were controlled</p> <p>Contractors are looking into solutions here.</p> <p>The leaking equipment was repaired.</p> <p>Needs attention.</p> <p>NA at this time.</p>
<p>Additional Observations</p>	<p>Non-project related debris (cups, pizza boxes, etc.) was noted off Arbutus Street. 2/26/07</p>	<p>Monitor and clean debris when in the area. 2/26/07</p>	<p>Non-project related debris noted.</p>

Next likely scheduled inspection: Tuesday March 6, 2007

I have personally examined and am familiar with the information submitted in this document and all attachments and certify that based on reasonable investigation, including my inquiry of those individuals responsible for obtaining the information, the submitted information is true, accurate and complete to the best of my knowledge and belief, and I understand that any false statements made in this document or its attachments may be punishable as a criminal offense in accordance with Section 22a-6 under Section 53a-157 of the Connecticut General Statutes.

Field Inspector: Matthew Creighton, BSC Group

Reviewer: Diana Walden, BSC Group



Foundations and poles installed along ROW between Little Lane and Route 17.



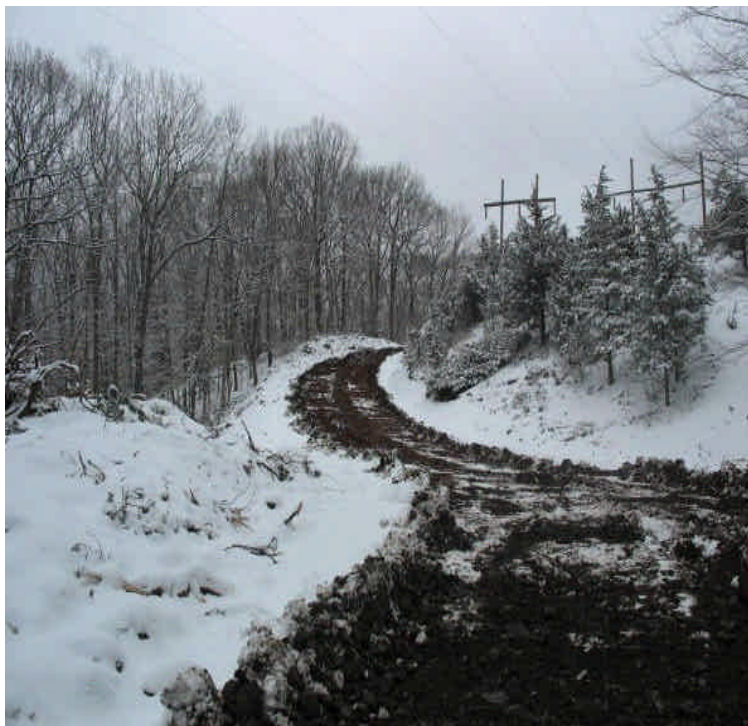
Timber mats in place for access west of Arbutus Street. No run-off was noted during the inspection.



View of access road and culvert in place off Black Walnut Dr. Filter socks were installed along the base of slope of the access road. Continue to monitor to ensure filter socks are controlling run-off appropriately



View of parking and staging area off Black Walnut Dr.



New access road off Black Walnut Dr. Access is installed in this section to reach poles locations to the east and avoid crossing Ball Brook and associated habitat.



Silt fence, fiber rolls, and hay mulch are in place as a buffer for wetlands around the perimeter of the contractor receiving yard. Replace fallen sections of silt fence and filter sock that was run over.



Additional controls remain in place adjacent to wetlands to filter/contain turbid run-off leaving the site.



The fuel storage tanks remain in place on the stone spill pad and nozzles are contained. Small drip stains are noted and are contained to the stone.



Controls are stable off Black Pond.



**Wetland crossing off Powder Hill Road. No sediment observed
Coming from the stone crossing**



Both photos show foundation drilling west of Powder Hill Rd. No active dewatering was noted during the inspection. Controls were in place downgradient.





Foundation drilling along the ROW east of Beseck SS. Controls were in place to prevent sediment from entering the wetlands.



Slurry from foundation drilling in the wetland was being trucked and placed on a slope upgradient. Stabilize soils or install controls as necessary to prevent sedimentation from migrating



Water bars were installed along the access road north of Beseck SS. Turbid water is diverted off the road and towards haybales installed to filter sediment.



Controls were left in place after drilling the foundation adjacent to to the pond, north of Beseck SS.