

**Docket No. 272 – Development and Management Plan Inspection**

The Connecticut Light and Power Company Certificate of Environmental Compatibility and Public Need for the construction of a new 345-kV electric transmission line and associated facilities between Scovill Rock Switching Station in Middletown and Norwalk Substation in Norwalk, Connecticut, including reconstruction of portions of existing 115-kV and 345-kV electric transmission line, the construction of Beseck Switching Station in Wallingford, East Devon Substation in Milford, (and Singer Substation in Bridgeport), modifications at Scovill Rock Switching Station and Norwalk Substation, and the reconfiguration of certain interconnections.

**Segment 3 Underground Line**

**Date:** August 15, 2007

**Inspector:** Katie Bednaz

**Location:** East Devon Substation to the Housatonic River Crossing

**Rain Event:** 1.57" of precipitation was reported since the previous inspection with 1.15" of the total of precipitation recorded on 8/8. (Bridgeport, CT NOAA data)

Areas of Inspection	Observation	Recommended Action	Corrected Action
Access Roads and Adjacent Roadways	Exposed soils along the cross-country route for trenching activities between station #1065 to 1073 are now at the required 75% vegetative cover in approximately 90% of this area. It is anticipated that the small patches that remain sparsely vegetated will become stabilized over time. 8/15/07	Erosion controls may be removed when areas are considered fully stabilized (i.e. 75% vegetative cover). 8/15/07	The majority of this area is appropriately stabilized with vegetative cover and can likely be removed from the inspection route.
	A stone construction entrance is in place near station #1080. Sediment tracking was not observed as the area was inactive. 8/15/07	Continue to monitor and maintain the access and refresh stone when needed. 8/15/07	Not Applicable (NA)
Milford lay-down yard	The stone from the entrance to the yard is migrating out onto Shelland St. 7/19 – 8/15/07	Sweep rock back out of Shelland St. so that it is located entirely within the yard boundaries. 7/19 – 8/15/07	Needs attention when feasible.
Vault Openings and Trench Construction	No active work on vaults or trench were observed in this segment during this inspection. 8/15/07	None. 8/15/07	NA

Areas of Inspection	Observation	Recommended Action	Corrected Action
<b>Erosion and Sediment Controls</b>	<b>Filter fabric or filter socks remain in catch basins that are down-gradient of/ adjacent to construction activities. 8/15/07</b>	<b>Continue place a gutter buddy (or similar) in any catch basins with a curb/gutter drop inlet to prevent sediment from entering basin. 8/15/07</b>	<b>Catch basins were protected.(Proactively)</b>
	<b>Any exposed soils have potential for airborne dust migration. Contractors are aware of the potential. 8/15/07</b>	<b>Prevent dust migration by implementing the dust control specifications within the 2002 CT Guidelines for Soil Erosion and Sediment Control. If exposed soils are not to be worked within 30 days, they should be stabilized. 8/15/07</b>	<b>NA</b>
	<b>Slurry from saw cutting activities has the potential to enter catch basins. Issues were not observed this week. 8/15/07</b>	<b>Continue to prevent slurry from entering catch basins and sensitive areas, by quickly attending to it as it is generated. 8/15/07</b>	<b>No issues noted but needs regular attention.</b>
	<b>The soil on the slope near vault #3 which had been exposed (noted 7/5) remains temporarily stabilized with hay mulch and barrier controls (since 7/25). 8/15/07</b>	<b>Continue to monitor the area for run-off and erosion until it is permanently stabilized. 8/15/07</b>	<b>NA at this time</b>
	<b>Exposed soil along the slope near sta. #1080 has been temporarily stabilized with hay mulch (noted 7/13). A paved berm remains at the top of the slope to proactively divert stormwater to a catch basin (noted 7/19). 8/15/07</b>	<b>Continue to monitor the slope. Permanently stabilize the slope as soon as feasible. Continue to monitor to ensure diverted stormwater does not affect neighboring properties. 8/15/07</b>	<b>The slope is temporarily stabilized, but needs final restoration.</b>
	<b>The silt fence has been removed between sta. #1015-1020. All adjacent project-related areas are stable, with the exception of a small area of exposed soils over vault #1. Sedimentation from this</b>	<b>Stabilize small area of exposed soils over the vault and monitor for sediment migration. It would be beneficial to apply seed/mulch to the areas where controls were removed. 8/15/07</b>	<b>Old erosion controls were removed. Continue to stabilize.</b>

Areas of Inspection	Observation	Recommended Action	Corrected Action
Milford lay-down yard	<p>area has not been previously noted. Small areas of soil were disturbed in the removal of controls. 8/15/07</p> <p>Vegetation is fully established throughout sta #1052 to #1074. Silt fence remains throughout. 8/15/07</p> <p>The stone berm that has been installed in an effort to reduce the accumulation of fine sediment to the entrance to the yard appears to be functioning as intended. 8/15/07</p>	<p>Remove and properly dispose of silt fence when feasible. 8/15/07</p> <p>Monitor to ensure the effectiveness of the stone berm during rain events. Remove accumulated sediment outside of yard if vegetation continues to be sparse. 8/15/07</p>	<p>Needs attention when feasible</p> <p>The stone berm appears to be functioning.</p>
Inland Wetland and Watercourse encroachment and mitigation	<p>Inland Wetland resource areas are located near station # 1053, 1051, and from #1012 to 1021. Stations #1117 to 1118 are located in a resource area. 8/15/07</p> <p>Wetland flagging was also noted along the trench work between station #1049-51. Portions of the vegetation in this area have been cleared due to other activity. 8/15/07</p>	<p>Monitor resource areas to ensure that non-permitted encroachment or impacts do not occur 8/15/07</p> <p>None at this time. 8/15/07</p>	<p>NA</p> <p>NA</p>
Staging, Storage, and Parking Areas	<p>A contractor lay-down yard is located in Milford off of Shelland St. Jersey barriers are set up as bins to hold fill materials but have overtopped the containment area. Additional stone is in place throughout the yard to reduce mud and subsequent tracking 8/15/07</p>	<p>See erosion control section for more details. Contractors have stated the materials will be removed when the yard is restored. Contain material within established storage area and limits of the yard. 8/15/07</p>	<p>Contractors have stated the materials will be removed when the yard is restored.</p>
Soils	<p>Soils are exposed as part of the excavation for trench, vault, and utility</p>	<p>Soils appear to be handled appropriately. 8/15/07</p>	<p>NA</p>

Areas of Inspection	Observation	Recommended Action	Corrected Action
	work. 8/15/07		
State species of concern, threatened and endangered species.	According to the D&M plan, state-listed species are not located in this work area.	None.	NA
Vegetative clearing (including trees to save or danger trees noted) or stabilization	<p>Approximately 90% of the cross-country ROW from station #1064 to 1073 has established vegetative cover. (greater than 75% vegetative cover). 8/15/07</p> <p>Turf grass, hay mulch and the planted sapling remain at vault #3 in an effort to restore pre-construction conditions. 8/15/07</p> <p>The exposed soils located outside of the Milford lay-down yard that were recently seeded and mulched have some sparse grass growth. Sediment from yard had been accumulating (since 7/5) in this location before the stone berm was installed. 8/15/07</p>	<p>Areas which have not reached 75% vegetative cover are expected to continue to stabilize. 8/15/07</p> <p>Continue to monitor turf grass for viability and permanently stabilize the mulched area. See erosion control section for more details. 8/15/07</p> <p>Continue to monitor until exposed soils are permanently stabilized. If cover continues to be sparse, consider removing the accumulated sediment and re-seeding area. 8/15/07</p>	<p>A large majority of the ROW is stabilized and can likely be removed from the inspection route.</p> <p>NA at this time</p> <p>Continue to monitor</p>
Dewatering	Dewatering activities were not observed during this week's inspection, as there were no areas of active construction. 8/15/07	None. If dewatering needs to occur, ensure that it is contained appropriately and filtered before released to adjacent areas. 8/15/07	NA
Blasting	No blasting has been proposed. 8/15/07	None 8/15/07	NA
Spills and Material Storage	<p>Reserve spill cleanup materials/kits were observed in the storage yard. 8/15/07</p> <p>Material (gravel) was overtopping the established storage binds,</p>	<p>Continue to bring spill kits to active work sites. 8/15/07</p> <p>Contain material within established storage area and limits of yard.</p>	<p>NA</p> <p>Contractors stated that the materials will be removed when the</p>

Areas of Inspection	Observation	Recommended Action	Corrected Action
	<b>beyond the perimeter controls of the yard. (noted since 4/25) 8/15/07</b>	<b>Contractors stated the materials will be removed when the area is restored. 8/15/07</b>	<b>yard is restored.</b>
<b>Additional Observations</b>	<b>None 8/15/07</b>	<b>None 8/15/07</b>	<b>NA</b>

**Next likely scheduled inspection:**

**Tuesday August 21, 2007**

I have personally examined and am familiar with the information submitted in this document and all attachments and certify that based on reasonable investigation, including my inquiry of those individuals responsible for obtaining the information, the submitted information is true, accurate and complete to the best of my knowledge and belief, and I understand that any false statements made in this document or its attachments may be punishable as a criminal offense in accordance with Section 22a-6 under Section 53a-157 of the Connecticut General Statutes.

**Field Inspector:** Katie Bednaz, BSC Group

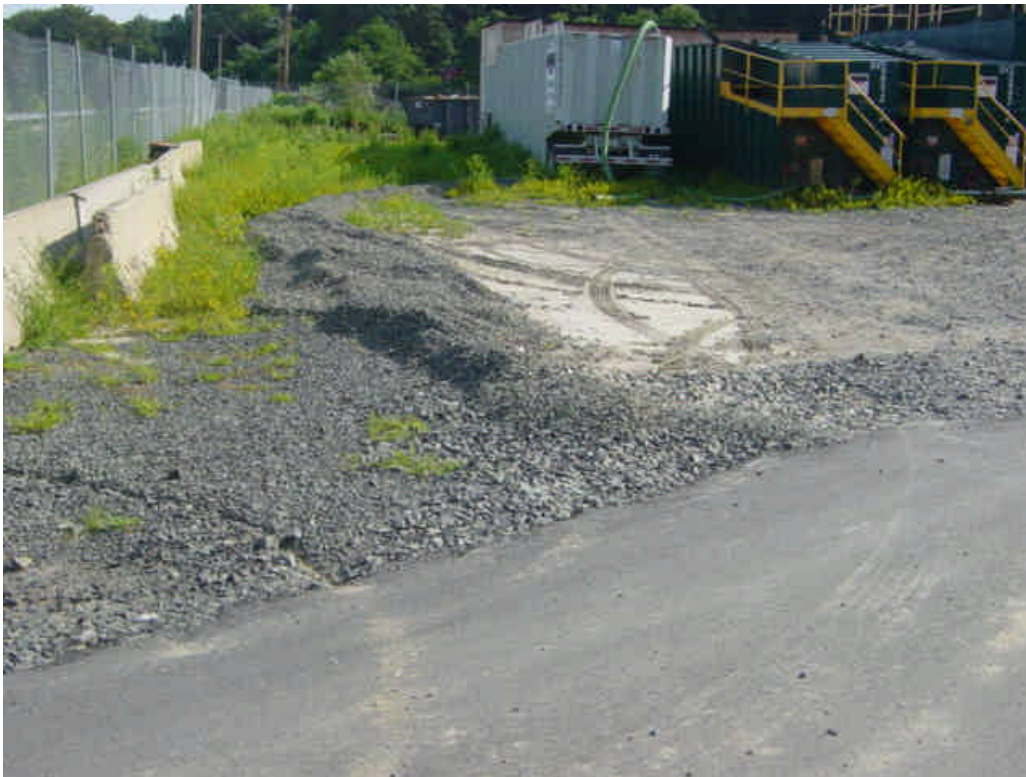
**Reviewer:** Diana Walden, BSC Group



**Silt fence has been removed near sta. # 1017 as adjacent areas are stable. It would be beneficial to apply seed to the areas exposed by the removal of the fence.**



**Crews were working internal to vault #5 to vault #4 during the inspection.**



**The stone berm installed within the Milford lay-down is functioning well to control sediment migration beyond the limits of the yard.**