

Docket No. 272 – Development and Management Plan Inspection

The Connecticut Light and Power Company Certificate of Environmental Compatibility and Public Need for the construction of a new 345-kV electric transmission line and associated facilities between Scovill Rock Switching Station in Middletown and Norwalk Substation in Norwalk, Connecticut, including reconstruction of portions of existing 115-kV and 345-kV electric transmission line, the construction of Beseck Switching Station in Wallingford, East Devon Substation in Milford, (and Singer Substation in Bridgeport), modifications at Scovill Rock Switching Station and Norwalk Substation, and the reconfiguration of certain interconnections.

Segment 2b Inspection

Date: June 12, 2008

Inspector: Matt Kelly

Location: Segment 2b – Cheshire/Hamden Town Line to East Devon Substation

Rainfall: 0.47” of precipitation were recorded since the last inspection with 0.46” of the total recorded on 6/8. (NOAA data at New Haven, CT).

Areas of Inspection	Observation	Recommended Action	Corrected Action
Access roads and adjacent roadways	Clearing and access road construction appear to be complete in these sections at this time. 6/12/08	Continue to monitor active work areas and add controls as necessary. See EC section. 6/12/08	Not Applicable (NA)
Milford, CT, Orange CT, Woodbridge CT, Bethany CT, and Hamden CT	Stone pads remain in place at all entrances to access roads. 6/12/08	Continue to monitor for sediment tracking in active areas. Sweep roadways as necessary. 6/12/08	Active areas need regular attention
All access roads	Mats remain at the wetland crossings in these sections. 6/12/08	Continue to monitor. 6/12/08	NA
Milford, CT Caswell St/Bic Dr	Some sediment tracking was observed in this section this week, and sediment has accumulated near the catch basin on Caswell/Bic Dr. The contractor has stated that catch basin protection has not been provided in this area due to flooding concerns. <i>Note: Sedimentation from non-project related activity has also been observed in this area.</i> 6/12/08	Continue to monitor and sweep roadway as necessary. If sediment tracking continues, catch basin protection should be provided. 6/12/08	Sediment tracking/accumulation needs regular attention

Areas of Inspection	Observation	Recommended Action	Corrected Action
<p>Shelland St</p> <p>Woodbridge, CT</p> <p>Pease Rd</p> <p>Hamden, CT</p> <p>Old Ln</p>	<p>Some sediment tracking was observed at the entrance to the storage yard. Catch basin protection has been provided in this area. 6/12/08</p> <p>The contractor has stated that catch basin protection has not been provided in this area due to flooding concerns. No tracking was observed this week. 6/12/08</p> <p>Catch basin protection has not been provided in this area. 6/12/08</p>	<p>Continue to monitor and sweep roadway as necessary. 6/12/08</p> <p>Continue to monitor. Sweep roadway as necessary. 6/12/08</p> <p>Continue to monitor. Provide and maintain catch basin protection. 6/12/08</p>	<p>NA</p> <p>NA</p> <p>Needs attention</p>
<p>Foundation and site construction</p> <p>All sections</p>	<p>H- frame structure and lattice tower removal appears to be complete at this time. 6/12/08</p> <p>115-kV foundation work appears to be complete within the ROW at this time. Restoration efforts continue. 6/12/08</p> <p>345-kV foundation work and structure installation appears to be complete within the ROW at this time. Wire pulling activities continue. 6/12/08</p>	<p>NA. 6/12/08</p> <p>Continue to monitor. See EC Section. 6/12/08</p> <p>Continue to monitor. See EC Section. 6/12/08</p>	<p>NA</p> <p>NA</p> <p>NA</p>
<p>Erosion and sediment controls</p>	<p>Roots have been retained in most cleared areas to maintain some soil stability. Crews have made good efforts to temporarily stabilize most disturbed areas with hay mulch. Timber mats and erosion controls are in place in and adjacent to wetland areas. 6/12/08</p>	<p>None at this time. Continue to utilize the appropriate erosion control measures and stabilize disturbed soils as necessary. 6/12/08</p>	<p>NA</p>

Areas of Inspection	Observation	Recommended Action	Corrected Action
Milford, CT Naugatuck Ave	Silt fence is in need of repair near structure #3804. 6/12/08	Maintain/add controls as necessary. 6/12/08	Needs attention when feasible
Plains Rd	The erosive gully within the drainage swale located to the south of the substation has been graded and hydro-seed has been applied to exposed soils (6/6). Vegetative growth was observed this week. 6/12/08	Continue to monitor until stabilized with vegetation. 6/12/08	Gully has been graded and seeded
Wheelers Farm Rd	An erosive gully was observed near structure #3832. Controls remain in place, but silt fence controls are nearing capacity. Some sediment has migrated around/ under the controls and off the ROW, but no further sediment accumulation was observed. Vegetative growth was observed within the gully. 6/12/08	Continue to monitor and add/maintain controls as necessary until vegetation growth has stabilized the area. 6/12/08	Vegetative growth was observed within the gully. <i>Needs further evaluation/attention</i>
	Ground water is no longer breaking through and flowing across the access road and crane pad near structure #3832, but channelized stormwater flow continues within the ROW. 5/30-6/12/08	Continue to monitor and add/maintain controls as necessary. 6/12/08	Needs attention/evaluation
Eisenhower Park	Excess sediment from foundation drilling was observed on wetland timber mats in this section. 1/24-6/12/08	Remove excess sediment from timber mat pads and add controls as necessary. See Wetland Section. 6/12/08	Needs attention when feasible
Orange, CT Dogwood Rd	Silt fence is in need of repair near structure #24067. 3/12-6/12/08	Repair/add controls as necessary. 6/12/08	Needs attention when feasible

Areas of Inspection	Observation	Recommended Action	Corrected Action
Dogburn Rd	Access road controls are still in need of repair and waterbars are no longer functional near structure #24077. Sediment accumulation was observed against the silt fence controls above Maltby Lake and within the access road. 4/11-6/12/08	Continue to monitor and repair/add controls as necessary. 6/12/08	Needs evaluation/attention
Route 34	Spoils remain within the ROW off Rt. 34. Piles appear to be contained in the upland portions of the ROW. 6/12/08	Remove spoil piles when feasible. 6/12/08	Needs attention when feasible
Woodbridge, CT Clearview Ln	Water from wetland #139 has been observed flowing over the access road and into the adjacent wetland. Turbid water was observed in the wetland here (4/11). 6/12/08	Add/maintain controls as necessary. See Wetlands Section. 6/12/08	Needs attention when feasible
Downs Road	Riprap control continue to function near structure #3982. 6/12/08	NA. 6/12/08	NA
Bethany & Hamden, CT	Spoils remain on the ROW off Litchfield Tpk, Hatfield Rd, Downs to Gaylord Mtn Rd, Tom Swamp, & Brooksvale Ave. 6/12/08	Remove spoil piles when feasible. 6/12/08	Remaining spoil piles Need attention when feasible
Bethany, CT Litchfield Tpk	Access road controls remain intact, but sediment from the road continues to accumulate on some of the wetland crossings in this section. 6/12/08	Continue to monitor and add/maintain controls to prevent sediment migration to the wetlands. 6/12/08	Needs evaluation/attention
Hamden, CT West Todd Street/ Gaylord Mountain	A small swale was installed along the ROW perimeter and the access road in an attempt to help control/divert stormwater	Monitor during large rain events and continue to add/maintain controls as necessary. Continue to monitor until final	Needs additional monitoring

Areas of Inspection	Observation	Recommended Action	Corrected Action
<p>Milford, CT</p> <p>Naugatuck Ave, Rt 121 and Oronoque Rd</p> <p>West River Street, Eisenhower Park, and North St</p> <p>East Rutland Road (western access point)</p> <p>Orange, CT</p> <p>Sunset Drive, Pine Tree Rd (east), Treat Lane, Lambert Rd, Russell Ave, Hunting hill Road, Racebrook Rd, and Route 34</p>	<p>structures that have been installed in wetlands (as approved) include: #'s 24023 (2), 24024, 24025, 24026, 24030, 24042, 24057, 24061, 24067, 24068, 24072 (2), 24090, 24091, 24092R, 24099, 24100, 24101, 24102, 24103, 24104, 24110, 24119(2), 24146, 24166, & 24179. 6/12/08</p> <p>Timber mat crane pads remain adjacent to/in wetlands in these sections. 6/12/08</p> <p>A stone access road remains within the wetland accessed from West River Street. Timber mat crane pads remain within the wetland areas in these sections. 6/12/08</p> <p>Excess sediment from foundation drilling was observed on wetland timber mats in the ROW within Eisenhower Park. 6/12/08</p> <p>A stone access road remains at the wetland crossing off East Rutland. An existing stone culvert was already in place here. 6/12/08</p> <p>Timber mat crane pads/crossings remain at the wetland areas here. Stone wetland crossings are in place at Lambert Rd and Treat Lane. 6/12/08</p>	<p>add controls as necessary. 6/12/08</p> <p>Continue to monitor and add controls as necessary. 6/12/08</p> <p>Continue to monitor and add controls as necessary. 6/12/08</p> <p>Evaluate sediment accumulation within the wetland when mats are removed. Carefully remove sediment during the dry season if it is found to be greater than 2" in depth. See EC Section. 6/12/08</p> <p>Continue to monitor. Install controls as necessary. 6/12/08</p> <p>Continue to monitor. 6/12/08</p>	<p>NA at this time</p> <p>NA at this time</p> <p>Needs attention when feasible</p> <p>NA at this time.</p> <p>NA at this time</p>

Areas of Inspection	Observation	Recommended Action	Corrected Action
Woodbridge, CT	Stone access roads and timber mat crossings remain in the wetland areas here. 6/12/08	Continue to monitor. 6/12/08	NA at this time
Clearview Lane	Turbid water was observed in the wetland here 4/11. No further accumulation has been observed. 6/12/08	Evaluate sediment accumulation within the wetland. Carefully remove sediment during the dry season if it is found to be greater than 2” in depth. See EC Section. 6/12/08	No further accumulation has been observed. <i>Needs further evaluation</i>
JCC/B’Nai Jacob	The access road to structures #3899/24086 is impeding water flow from the eastern portion of the wetland to the western portion. 6/12/08	Evaluate options (i.e. re-grade access road or install culvert) to allow water to flow to the western portion of the wetland. 6/12/08	Needs evaluation
Rimmon Rd (south)	The wetland areas near the JCC and B’Nai Jacob have been cleared as a result of the permitted re-location of the ROW. Stone access roads remain in portions of the wetlands in these sections. 6/12/08	Continue to monitor. Adjust controls as necessary. 6/12/08	NA at this time
Oak Lane CC, Cow Path Lane, Salem Rd, Rimmon Rd, Brookwood Dr, Center Rd, Ansonia Rd, Manville Rd and Clear Ln to Rte 15	The timber mat crane pad crossing has been removed from the tributary stream near structure #24105. 6/12/08	Continue to monitor. Restore as necessary. 6/12/08	The timber mat crossing has been removed from the stream near structure #24105
Bethany, CT Morris to Hatfield	Timber mat crane pads remain within the wetlands in these sections. 6/12/08	Continue to monitor. 6/12/08	NA at this time
Litchfield Turnpike	A stone access road and timber mats are in place in the wetland areas in this section. 6/12/08	Continue to monitor. 6/12/08	NA
	Excess sediment has accumulated on the	Carefully remove sediment from wetland areas when	Needs evaluation/attention

Areas of Inspection	Observation	Recommended Action	Corrected Action
<p>Hamden,CT</p>	<p>timber mat crossings within the access road here. Some Sediment has seeped through the mats and into wetlands #116 (between structures #3964 and #3965), #115 (between structures #3965 and #3966) and #114 (between structure #3966 and #3967). 6/12/08</p>	<p>timber mats are removed. See EC Section. 6/12/08</p>	
<p>West Todd St, Tom Swamp/Arrow Rd, Willow Street, Brooksvale Ave, and Old Lane Rd</p>	<p>Temporary stone access roads and timber mats remain in some of the wetland areas in these sections. 6/12/08</p>	<p>Continue to monitor. 6/12/08</p>	<p>NA at this time</p>
<p>Gaylord Mtn. Rd. (North)</p>	<p>Sediment remains in the wetland area located to the southwest of structure #3992. 12/20/07-No further accumulation has been observed and wetland vegetation growth has been noted. 6/12/08</p>	<p>Evaluate sediment accumulation within the wetland. Carefully remove sediment from wetland if it is greater than 2” in depth. 6/12/08</p>	<p>Needs evaluation/attention when feasible</p>
<p>Brooksvale Ave</p>	<p>A spoil pile and tire ruts remain in the wetland area near structure #24179. 4/25-6/12/08</p>	<p>Remove spoils and grade/stabilize ruts. 6/12/08</p>	<p>Needs attention</p>
<p>Brooksvale Ave</p>	<p>Sediment had seeped through the mats and into wetland #100. 6/12/08</p>	<p>Carefully remove sediment from wetland areas if it exceeds 2” in depth when timber mats are removed. 6/12/08</p>	<p>Needs evaluation/attention</p>
<p>Whitney Ave</p>	<p>Sediment remains in the wetland near structure #24195. 6/12/08</p>	<p>Carefully remove sediment from wetland areas if it exceeds 2” in depth. 6/12/08</p>	<p>Needs evaluation</p>
<p>115-kV underground transmission line Old Lane Road</p>	<p>Sediment accumulation was evaluated in a portion of the wetland here. Less than 2” of sediment was observed at the catch basin outlet in the wetland</p>	<p>Continue to evaluate sediment accumulation within the adjacent wetland. Carefully remove sediment from the wetland if it is greater than 2’ in</p>	<p>Needs further evaluation</p>

Areas of Inspection	Observation	Recommended Action	Corrected Action
	across from the overhead access road. (115-kV underground). 6/12/08	depth. 6/12/08	
State species of concern, threatened and endangered species.	According to the D&M plan, Wood Turtles are known to occur near the Wepawaug River at Eisenhower Park. Wood turtles are no longer considered dormant after April 1 st . 6/12/08	If active work is to continue in this area after April 1 st , field crews should receive the appropriate training in the recognition and removal of individual wood turtles from the construction area. “Sweeps” should be performed prior to the commencement of construction activities. 6/12/08	Ensure that field crews receive the appropriate training prior to the commencement of construction activities in these areas
<p>Vegetative clearing or stabilization</p> <p>All active roads (all towns)</p> <p>Milford and Orange, CT</p>	<p>Vegetative clearing was noted within the ROW. Most species were invasive and were removed. “Hedgerows”, including cedars and similar short tree species were retained along the ROW where feasible. Select shrubs, especially those adjacent to wetlands, also remain in most areas. 6/12/08</p> <p>Exposed soils are being temporarily stabilized. 6/12/08</p> <p>115 kV crane pad reclamation and restoration work appear complete at this time. . Disturbed soils are being graded and mulched for temporary stabilization. Grass growth was observed in many areas, including Caswell Street, Naugatuck Ave, Plains</p>	<p>Continue to retain appropriate vegetation for stabilization. Retain as much vegetation as possible for screening. Confirm that clearing/cutting is limited only to areas defined in D&M plan. Provide as much buffer as possible for homeowners. 6/12/08</p> <p>Continue to monitor and stabilize disturbed areas when work is complete and activity will not return within 21 days. Continue to monitor until stabilization is achieved. 6/12/08</p> <p>Continue to monitor until <i>final stabilization</i> is achieved. 6/12/08</p>	<p>NA</p> <p>Exposed soils are being temporarily stabilized</p> <p>Grass growth was observed in many areas</p>

Areas of Inspection	Observation	Recommended Action	Corrected Action
<p>Caswell Street</p> <p>Woodbridge, CT</p> <p>Bethany and Hamden, CT</p>	<p>Road, Oronoque Road, Lexington Way, Wheelers Farm Road, Fresh Meadow Lane, North Street, Ridge Road, Pine Tree Drive, Sunset Drive, Russell Ave, Route 34, & Racebrook Road, last week. 6/12/08</p> <p>Construction of the wetland mitigation area in Eisenhower Park appears to be complete at this time (See East Devon Substation Report). Temporary stabilization measures are being removed and final stabilization techniques are being applied. 6/12/08</p> <p>115 kV crane pad reclamation and restoration work appears complete at this time. Disturbed soils are being graded and mulched for temporary stabilization. 6/12/08</p> <p>115 kV crane pad reclamation and restoration work appears complete at this time. Disturbed soils are being graded and mulched for temporary stabilization. Vegetative growth has been noted in many areas including Tom Swamp Rd, Brooksvale Ave, & Willow St. 6/12/08</p>	<p>Continue to monitor until <i>final stabilization</i> is achieved. 6/12/08</p> <p>Continue to monitor until <i>final stabilization</i> is achieved. 6/12/08</p> <p>Continue to monitor until <i>final stabilization</i> is achieved. 6/6/08</p>	<p>NA</p> <p>Disturbed soils are being graded and mulched for temporary stabilization</p> <p>Disturbed soils are being graded and mulched for temporary stabilization. Grass growth has been noted in many areas</p>
<p>Dewatering Orange, CT Woodbridge, Bethany, and Hamden CT</p>	<p>Dewatering appears complete at this time. 6/12/08</p>	<p>NA. 6/12/08</p>	<p>NA</p>

Areas of Inspection	Observation	Recommended Action	Corrected Action
Blasting	No blasting is proposed at this time. 6/12/08	None. 6/12/08	NA
Spills, soils and material storage.	Contractor receiving yard is set up near Shelland St. in Milford. See segment 3 report. 6/12/08	In general, store materials and equipment appropriately. Ensure that vehicles are equipped with spill kits. All construction vehicles should be parked at least 100 feet from a wetland or waterbody when feasible. 6/12/08	NA
Additional Observations	Non-project related activity was noted within the ROW off Sunset Dr. A trench was dug near the first structure and a pipe appears to have been installed to divert water from an unknown location. 1/18/07-6/12/08	Noted for the record. 1/18/07-6/12/08	NA
	Non-project related sedimentation has been observed in the roadway off Caswell Street/Bic Drive in Milford. 6/12/08	Note for the record. 6/12/08	NA
	Non-project related soil piles have been observed within a wetland buffer off North St in Milford. 6/12/08	Note for the record. 6/12/08	NA

Next likely scheduled inspection:

Thursday June 19, 2008

I have personally examined and am familiar with the information submitted in this document and all attachments and certify that based on reasonable investigation, including my inquiry of those individuals responsible for obtaining the information, the submitted information is true, accurate and complete to the best of my knowledge and belief, and I understand that any false statements made in this document or its attachments may be punishable as a criminal offense in accordance with Section 22a-6 under Section 53a-157 of the Connecticut General Statutes.

Field Inspector: Matt Kelly, BSC Group

Reviewer: Lee Curtis, BSC Group



Naugatuck Ave (Milford): Wetland timber mats remain in the wetland area near structure #3804.



Naugatuck Ave: A view of 115 kV restoration efforts near structure #3804. Vegetative growth has been observed here.



Naugatuck Ave: A view of 115kV restoration efforts near structure #3802. Some vegetative growth has been observed.



Naugatuck Ave: A view of 115kV restoration efforts near structure #3803. Some vegetative growth has been observed.



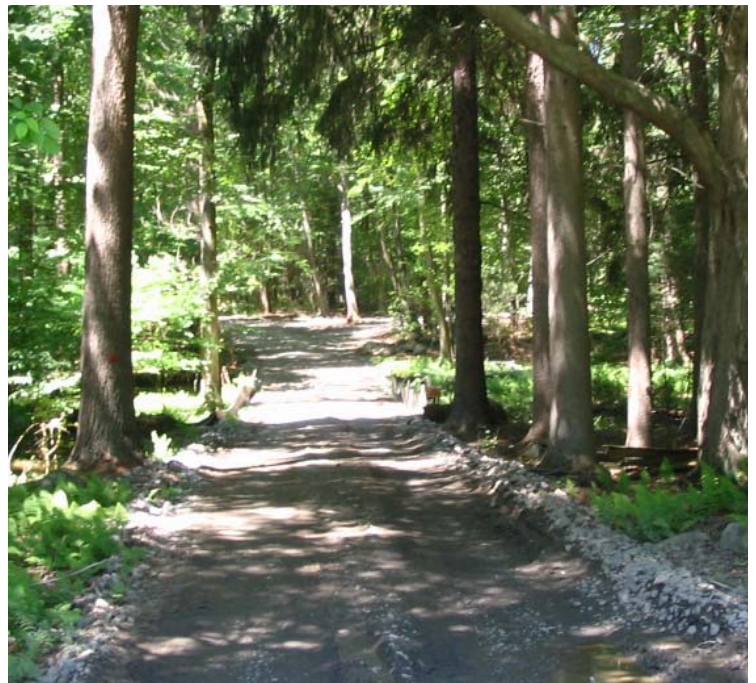
Caswell St (Milford): Vegetative growth has been noted and soils appear stable along the slope near structure #3887.



Clearview Ln (Woodbridge): The timber mat crossing remains in the wetland here.



Clearview Ln: An additional view of the timber mats used to cross wetland #138.



Clearview Ln: Timber mats remain in place at the stream crossing in this area.



Glen Dam (Woodbridge): The access road, located on a steep slope, remains stable and stormwater controls remain functional.



Downs Rd (Bethany): Rip-rap controls continue to function near structure #3982.



Downs Rd: An additional view of the rip-rap controls near structure #3982. There is a culvert inlet here that collects runoff from the eastern side of the access road.



Downs Rd: A view of the culvert outlet and rip-rap controls located on the western side of the access road near structure #3982.