

**Docket No. 272 – Development and Management Plan Inspection**

**The Connecticut Light and Power Company Certificate of Environmental Compatibility and Public Need for the construction of a new 345-kV electric transmission line and associated facilities between Scovill Rock Switching Station in Middletown and Norwalk Substation in Norwalk, Connecticut, including reconstruction of portions of existing 115-kV and 345-kV electric transmission line, the construction of Beseck Switching Station in Wallingford, East Devon Substation in Milford, (and Singer Substation in Bridgeport), modifications at Scovill Rock Switching Station and Norwalk Substation, and the reconfiguration of certain interconnections.**

**Segment 1a Inspection**

**Date:** June 16, 2008

**Inspector:** Matthew Creighton

**Location:** Segment 1a – Scovill Rock Switching Station to Chestnut Junction, Oxbow Junction to Beseck Switching Station (excluding Royal Oak Bypass), and Black Pond Junction to Beseck Switching Station

**Rainfall:** 2.11” of precipitation was recorded in the week prior to inspection with 0.92” falling on 6/16 (NOAA data at Meriden, CT).

<b>Areas of Inspection</b>	<b>Observation</b>	<b>Recommended Action</b>	<b>Corrected Action</b>
<b>Access roads and adjacent roadways</b>			
<b>Scovill SS west to Chestnut Junction</b>	<b>Restoration is almost complete. Contractor is currently focusing on restoring Seg.2A. 6/16/08</b>	<b>Continue to sweep roadways and refresh stone as needed. Clean existing controls in CBs as necessary. 6/16/08</b>	<b>Not Applicable (NA)</b>
<b>Scovill SS to Rte. 9 Rte. 9 to East Mount Rd.</b>	<b>Culverts are in place at the access road wetland crossings. Timber mat stream crossings have been removed. Water bars/drainage ditches remain on permanent access roads. Haybales remain adjacent to wetlands in-between structures 24617 &amp; 24618 and upgradient of wetland #4 to prevent run off from Scovill to Rte 9. 6/16/08</b>	<b>Sweep Freeman Road and Rte 9 as needed. Monitor wetlands around the site for run-off. Monitor haybales for effectiveness. 6/16/08</b>	<b>Restoration complete.</b>
<b>Shumpike Rd.</b>	<b>Timber mats remain at the 1<sup>st</sup> saturated crossing off E. Mount Rd. 6/16/08</b>	<b>Monitor the area until stable. Remove mats upon completion of work. 6/16/08</b>	<b>NA</b>
	<b>The gate remains in an effort to prevent further tracking in the recently restored access west off Shumpike Rd. 6/16/08</b>	<b>Continue to try and restrict access as feasible. 6/16/08</b>	<b>NA at this time.</b>

Areas of Inspection	Observation	Recommended Action	Corrected Action
<p><b>Oxbow Junction to Beseck SS Haddam Quarter Rd.</b></p>	<p><b>The permitted permanent access road remains in place. Stone fill bisects the wetland. The contractor reported that a new culvert was installed following the inspection. 6/16/08</b></p>	<p><b>Monitor the new culvert and controls for effectiveness. 6/16/08</b></p>	<p><i>Contractors stated the culvert was installed following the inspection.</i></p>
<p><b>Foot Hills Rd. to Durham Rd. (east) Powder Hill Rd.</b></p>	<p><b>Topsoil, hay, and seed remain at the reclaimed access roads and pad sites. 6/16/08</b></p>	<p><b>Monitor reclaimed areas for erosion and add controls as needed. 6/16/08</b></p>	<p><b>Restoration complete</b></p>
<p><b>Durham Rd</b></p>	<p><b>The stone access road in the large wetland system remains. During restoration it will be brought to grade and narrowed. A small area near the entrance has been reclaimed. 6/16/08</b></p>	<p><b>Stabilize exposed areas as soon as possible and continue to reclaim the roadway. See inland wetland section. Be careful to remove material here and reduce impacts. 6/16/08</b></p>	<p><b>NA at this time.</b> <i>Restoration still scheduled here.</i></p>
<p><b>Elihu Dr.; Rte. 157 (west) Private Driveway;</b></p>	<p><b>A small rutted area remains from equipment parking north side of access road driveway (west of 157) within an existing lawn. 4/29-6/16/08</b></p>	<p><b>Monitor the reclaimed area for stabilization. Hand grade and seed the rutted lawn area off private driveway. See erosion control section. 6/16/08</b></p>	<p><b>Lawn/ruts need attention.</b></p>
<p><b>Black Pond Junction to Beseck SS ROW, North of Beseck SS</b></p>	<p><b>All reclaimed/exposed areas have been mulched and seeded and grass growth was noted. 6/16/08</b></p>	<p><b>Continue to monitor for stabilization through vegetative cover. 6/16/08</b></p>	<p><b>NA at this time.</b></p>
<p><b>Fleming Rd to Black Pond Jct.</b></p>	<p><b>Final grading and restoration complete from Fleming Rd. to Black Pond Jct. Water bars and controls remain in place to divert and filter turbid run-off from the wetlands. 6/16/08</b></p>	<p><b>Monitor this area for final stabilization and repair controls as needed. See erosion control section 6/16/08</b></p>	<p><b>NA at this time.</b></p>
<p><b>East Meriden SS</b></p>	<p><b>A fence was being installed along the access road. New shrubs were also being planted along the ROW. 6/16/08</b></p>	<p><b>Monitor for stabilization and add controls as needed along the slope. Monitor newly planted shrubs until established. 6/16/08</b></p>	<p><b>New shrubs and a fence were being installed.</b></p>

Areas of Inspection	Observation	Recommended Action	Corrected Action
<p><b>Foundation and site construction</b></p>	<p>With the exception of Durham Rd. and a few minor areas. Reclamation is largely complete in Seg 1A. Contractors are restoring Seg 2A. 6/16/08</p> <p>Crews were installing a new fence and planting shrubs along the ROW near E. Meriden SS. 6/16/08</p>	<p>None at this time. 6/16/08</p> <p>See access road section. 6/16/08</p>	<p>NA at this time.</p> <p>Crews were installing a fence and planting shrubs.</p>
<p><b>Erosion and sediment controls</b> Scovill SS west to Chestnut Junction</p> <p><b>Oxbow Junction to Beseck SS</b> Haddam Quarter Road to Durham Rd.</p> <p><b>Contractor Receiving Yard and Storage Area</b></p>	<p>Water bars/drainage ditches are working well in this area. 6/16/08</p> <p>Final restoration of pads and access roads is complete in this section. 6/16/08</p> <p>Timber mats remain at the 1<sup>st</sup> crossing for access off East Mount Rd. 6/16/08</p> <p>Reclamation was complete from Haddam Quarter Rd to Durham Rd. Controls remain adjacent to sensitive areas and exposed areas remain covered with hay and seed. 6/16/08</p> <p>The permitted stone access road remains. Contractor reported that the culvert was installed at the bisected wetlands, off Haddam Quarter Rd. following the inspection. 6/16/08</p> <p>Controls remain in good shape around the perimeter of the yard. The large exposed storage area (north west of yard) is almost stable with vegetative cover. 6/16/08</p>	<p>Continue to maintain and ensure water is directed to stable areas. 6/16/08</p> <p>Continue to monitor and add controls as needed. Monitor newly restored areas for vegetative cover and stabilization. 6/16/08</p> <p>Continue to use timber mats until work is complete. Monitor for stabilization. 6/16/08</p> <p>Monitor controls and maintain as needed. Monitor for final stabilization and vegetative cover. 6/16/08</p> <p>Monitor wetlands for flooding of the access road and erosion. Also monitor the effectiveness of the new culvert and downstream controls. 6/16/08</p> <p>Monitor this area for stabilization and continue to maintain controls until stable. 6/16/08</p>	<p>NA at this time</p> <p>Final restoration complete.</p> <p>NA</p> <p>NA at this time.</p> <p>Contractors reported a culvert was installed following this week's inspection.</p> <p>NA at this time.</p>

Areas of Inspection	Observation	Recommended Action	Corrected Action
	<p><b>Contractor is spreading/grading stockpiles around the yard as fill. Several stockpiled soils from multiple sites remain stored around yard and will need to be temporarily stabilized or removed. 6/16/08</b></p>	<p><b>Add controls around the stockpiles to stabilize, or remove in accordance with the D&amp;M plan. The land owner requested the fill but confirm with the water district that this practice is acceptable. 6/16/08</b></p>	<p><b>Stockpiles will need controls. Needs evaluation.</b></p>
<p><b>Durham Rd.</b></p>	<p><b>Some controls are in place including fiber rolls adjacent to the stone pad at structure # 24521, which regularly floods. 6/16/08</b></p>	<p><b>Monitor carefully and reduce grade and width of the road to the maximum extent feasible. Avoid entering/working on the access road when it is flooded. 6/16/08</b></p>	<p><b>Needs careful monitoring. See Inland wetland section.</b></p>
<p><b>Rte. 157 (east &amp; west) &amp; Elihu drive</b></p>	<p><b>Small ruts from equipment were noted west of Rte. 157 along the private driveway within an area of lawn. 4/29-6/16/08.</b></p>	<p><b>Continue to monitor until final stabilization is achieved. Repair ruts by hand and seed when feasible. 4/29-6/16/08</b></p>	<p><b>Small ruts need attention.</b></p>
<p><b>Powder Hill Rd.</b></p>	<p><b>Restoration is complete. Slopes appear to be well vegetated and stabilizing. 6/16/08</b></p>	<p><b>Controls should be maintained until the area is stable. 6/16/08</b></p>	<p><b>NA at this time.</b></p>
<p><b>East of Beseck SS</b></p>	<p><b>Haybales are installed around the riprap sediment trap to filter any overflowing water from the basin. 6/16/08</b></p>	<p><b>Continue to monitor the controls for effectiveness and add/replace as needed. 6/16/08</b></p>	<p><b>NA at this time.</b></p>
<p><b>Black Pond Junction to Beseck SS ROW, North of Beseck SS to Black Pond Jct.</b></p>	<p><b>All controls remain in place until final stabilization has been achieved. 6/16/08</b></p> <p><b>All pads north of Beseck to Black Pond Jct. have been reclaimed well and the ROW is in good condition. All controls remain in place until final stabilization has been achieved. 6/16/08</b></p>	<p><b>Continue to monitor and maintain controls until final stabilization and vegetative cover has established 6/16/08</b></p> <p><b>Continue to monitor and maintain controls until final stabilization and vegetative cover has established. Any silt fence will have to be removed upon stabilization. 6/16/08</b></p>	<p><b>NA at this time.</b></p> <p><b>Good grass growth is noted in many areas.</b></p>
<p><b>Inland Wetland and Watercourse</b></p>	<p><b>ACOE permit is in hand.</b></p>	<p><b>Perform work in wetlands under the permitted</b></p>	<p><b>NA</b></p>

Areas of Inspection	Observation	Recommended Action	Corrected Action
<b>encroachment and mitigation</b>	<b>In accordance with the D&amp;M Plan, all work occurring in and around wetlands should be expedited to minimize potential adverse impacts to wetlands and reduce disturbances to wetland soils. The majority of areas in this segment have been or are being reclaimed. 6/16/08</b>	<b>guidelines. 6/16/08 Any additional work needed in and around wetlands should be expedited to allow for final stabilization procedures to commence. 6/16/08</b>	<i>Restoration is almost complete.</i>
Scovill SS west to Chestnut Junction	<b>Only culverts remain in permanent wetland crossings except for the timber mat access at E. Mount, which was just recently restored 6/16/08</b>	<b>See erosion control and access road sections. If further access is needed in this area, mats should be reinstalled. 6/16/08</b>	<b>Restoration is complete.</b>
Oxbow Junction to Beseck SS Haddam Quarter Rd.	<b>Timber mats were removed and replaced with a permitted stone access. Contractor reported that the new culvert has been installed following the inspection. 6/16/08</b>	<b>Monitor crossing for erosion and flooding and ensure the hydrologic connection was restored. See access road section. 6/16/08</b>	<b>Contract reported that the culvert has been installed.</b>
Durham Rd.	<b>Timber mats and some of the stone from the access road were removed from this area. 6/16/08 BSC was informed that ACOE is allowing this road to remain at or within 2" of the adjacent grade so that sheet flow can occur. The road will also be narrowed. 6/16/08</b>	<b>When restoration occurs, the road base will remain at grade (for structure access). Remove the appropriate amount of stone and narrow the road to the extent feasible (This will likely be 15 feet based on NU's needs). Be extremely careful during this work to reduce impacts. 4/21-6/16/08</b>	<b>Reclamation will continue. Continue to monitor very carefully.</b>
Powder Hill Rd.	<b>The major crossing near the pond remains but all other crossings and channels remain restored 6/16/08</b>	<b>Monitor the exposed areas and controls closely in this area until stabilization is complete. 6/16/08</b>	<b>Continue to monitor.</b>
East of Beseck SS	<b>The minor sediment and stone/soil from the old pad (noted since 10/22) removed by hand, from</b>	<b>Monitor the exposed soils around the wetlands for stabilization. Maintain controls until stable.</b>	<b>NA at this time.</b>

Areas of Inspection	Observation	Recommended Action	Corrected Action
<p><b>Black Pond Junction to Beseck SS Fleming Rd. High Hill Rd. South to East Meriden Substation and north to Black Pond</b></p>	<p><b>the wetlands. BSC had previously evaluated this with B&amp;M and agreed that this was appropriate. 6/16/08</b></p> <p><b>The braided stream channels at structure #24415 (near East Meriden Sub) remain in good shape and were flowing clear. 6/16/08</b></p> <p><b>Exposed soil present within wetlands north and south of High Hill Rd. and south of East Main St. and at Black Pond Jct. remain graded, seeded and mulched. 6/16/08</b></p>	<p><b>6/16/08</b></p> <p><b>Trees previously cleared in the wetland have new growth sprouting from the stumps and the area should come back successfully in the growing season. Continue to monitor for erosion until full vegetative cover establishes. 6/16/08</b></p> <p><b>Monitor controls and soils until stabilized. See erosion controls section for more information. 6/16/08</b></p>	<p><b>Streams and wetlands were restored very well.</b></p> <p><b>Continue to monitor.</b></p> <p><b>Grass growth noted.</b></p>
<p><b>State species of concern, threatened and endangered species.</b></p> <p><b>Multiple ROW areas including Scovill SS; Haddam Quarter Rd. To Foot Hills Rd.; Johnson Lane; Powder Hill Rd.; Contractor Storage Yard Pond; East of Beseck SS</b></p>	<p><b>Potential habitat for wood turtles exists at Ball Brook in this section. Contractors have avoided crossing this area. The pad and slope upgradient from the stream are reclaimed. 6/16/08</b></p> <p><b>A variety of wildlife has been noted in and adjacent to the majority of wetlands in the ROW at access and work areas. These are not state listed species, but indicate good habitat. 6/16/08</b></p>	<p><b>April 1<sup>st</sup> was the start of the wood turtles active season; If any additional access is needed here, sweeps have to be performed. 6/16/08</b></p> <p><b>Continue to be very mindful of controlling sediment and reducing access near wetlands used for amphibian breeding. Also monitor controls for effectiveness and be mindful that the controls can block foraging/migrating wildlife 6/16/08</b></p>	<p><b>NA at this time.</b></p> <p><b>Continue to monitor</b></p>
<p><b>Vegetative clearing or stabilization</b></p> <p>ROW west of Scovill Rock SS to Chestnut Junction; Oxbow Jct. to Durham Rd; Durham Rd</p>	<p><b>These areas have been final graded, hayed, and seeded. Some pad sites are along slopes and may have issues with erosion during heavy rains. Controls remain in all</b></p>	<p><b>Grass growth and vegetative cover are noted in many of the restored areas. Monitor all exposed areas and controls and maintain as needed, until</b></p>	<p><b>Vegetative cover is increasing in many areas and portions of the ROW are well restored.</b></p>

<b>Areas of Inspection</b>	<b>Observation</b>	<b>Recommended Action</b>	<b>Corrected Action</b>
(Golf course); to Beseck SS; ROW North of Beseck SS to Black Pond	<b>exposed areas. Grass cover and revegetation noted in many areas. 6/16/08</b>  <b>Shrubs were being planted along the ROW near E. Meriden SS. 6/16/08</b>	<b>stable. Remove any silt fence after an area has stabilized. 6/16/08</b>  <b>Monitor shrubs and replace if needed. 6/16/08</b>	<b>Shrubs were being planted.</b>
<b>Dewatering</b>	<b>Dewatering is complete at this time and basins have been removed. 6/16/08</b>	<b>Continue to restore areas as needed. 6/16/08</b>	<b>NA at this time.</b>
<b>Blasting</b>	<b>No blasting is proposed. 6/16/08</b>	<b>None 6/16/08</b>	<b>NA</b>
<b>Spills, soils and material storage</b> All active areas  <b>1A and 1B Contractor Receiving Yard and Staging Area</b>	<b>Spill controls move from site to site with the equipment. 6/16/08</b>  <b>Materials are being stored in this area. Fuel tanks are not present. Soil/stone stockpiles from the reclamation of multiple sites were being stored and spread here. 6/16/08</b>	<b>Always use spill control materials when working on equipment and during refueling. Park equipment 100 feet from wetlands when feasible 6/16/08</b>  <b>Continue to locate hazardous materials and equipment away from wetland inlets such as culverts and CBs. See erosion control section regarding stockpiles 6/16/08</b>	<b>NA</b>  <b>Needs evaluation.</b>
<b>Additional Observations</b>	<b>NA</b>	<b>NA</b>	<b>NA</b>

**Next likely scheduled inspection:**

**Monday June 23, 2008**

**I have personally examined and am familiar with the information submitted in this document and all attachments and certify that based on reasonable investigation, including my inquiry of those individuals responsible for obtaining the information, the submitted information is true, accurate and complete to the best of my knowledge and belief, and I understand that any false statements made in this document or its attachments may be punishable as a criminal offense in accordance with Section 22a-6 under Section 53a-157 of the Connecticut General Statutes.**

**Field Inspector:** Matt Creighton, BSC Group

**Reviewer:** Diana Walden, BSC Group



**Scovill SS: View of vegetative growth along the access road near the switching station. Mountain laurels were retained as appropriate low growth, woody species.**



**Saybrook Road: Final restoration complete, controls remain from Saybrook to Scovill. When adjacent areas stabilize, silt fence will have to be removed.**



**Contractor Yard: Contractor is grading/spreading the previously stored stone/soil stockpiles that originated from several sites along the ROW, at the yard.**



**Contractor Yard: Remaining additional soil stockpiles from several sites should be temporarily stabilized or removed.**





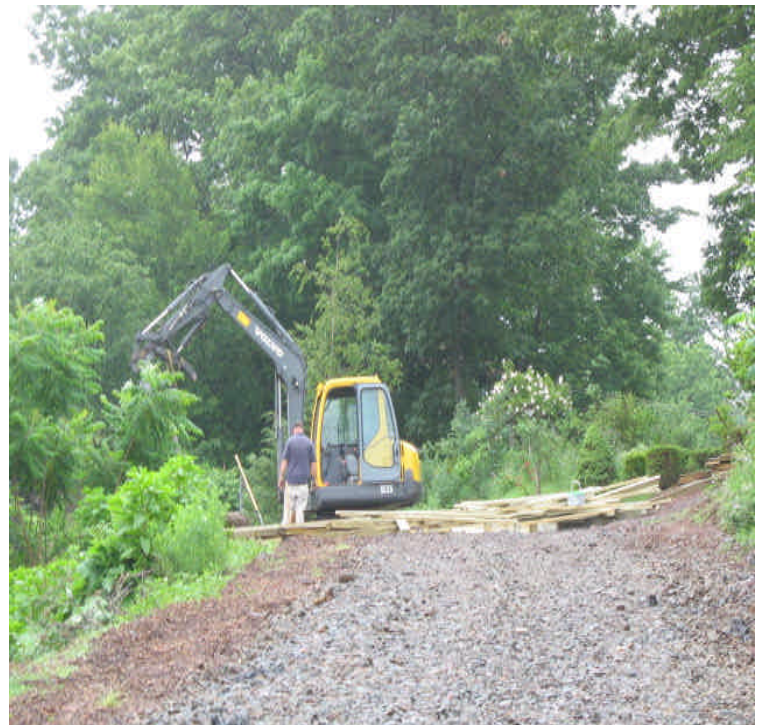
**Contractor Yard:** Upper yard is almost completely stabilized with vegetative cover.



**Powder Hill Rd:** Final restoration complete. Grass growth noted along the slopes and the ROW is in good shape.



**E Meriden SS:** Crews were planting shrubs along the ROW. Grass cover was noted in recently seeded areas.



**E. Meriden SS:** Crews were installing a fence near the horse stable.