



middletown | norwalk

July 22, 2004

Ms. Pamela B. Katz
Chairman
Connecticut Siting Council
10 Franklin Square
New Britain, CT 06051

Re: Docket No. 272: The Connecticut Light and Power Company and The United Illuminating Company Application for a Certificate of Environmental Compatibility and Public Need for the construction of a new 345-kV electric transmission line and associated facilities between the Scovill Rock Switching Station in Middletown and the Norwalk Substation in Norwalk, including the reconstruction of portions of existing 115-kV and 345-kV electric transmission lines, the construction of Beseck Switching Station in Wallingford, East Devon Substation in Milford, and Singer Substation in Bridgeport, modifications at Scovill Rock Switching Station and Norwalk Substation, and the reconfiguration of certain interconnections

Dear Ms. Katz:

The Connecticut Light and Power Company ("CL&P") and The United Illuminating Company ("UI") (together, the "Companies") submit the attached map entitled "Middletown – Norwalk 345-kV Transmission Project Section 1 and 2 Wetland Map" in response to a "homework assignment" from the Council during the June 3, 2004 hearing. (See 6/1/04 Tr. at 149-152).

A copy of the Map will be sent, via electronic and regular mail, to the Siting Council and the service list.



**Connecticut
Light & Power**

The Northeast Utilities System



The United Illuminating Company

Respectfully Submitted,

Applicants,

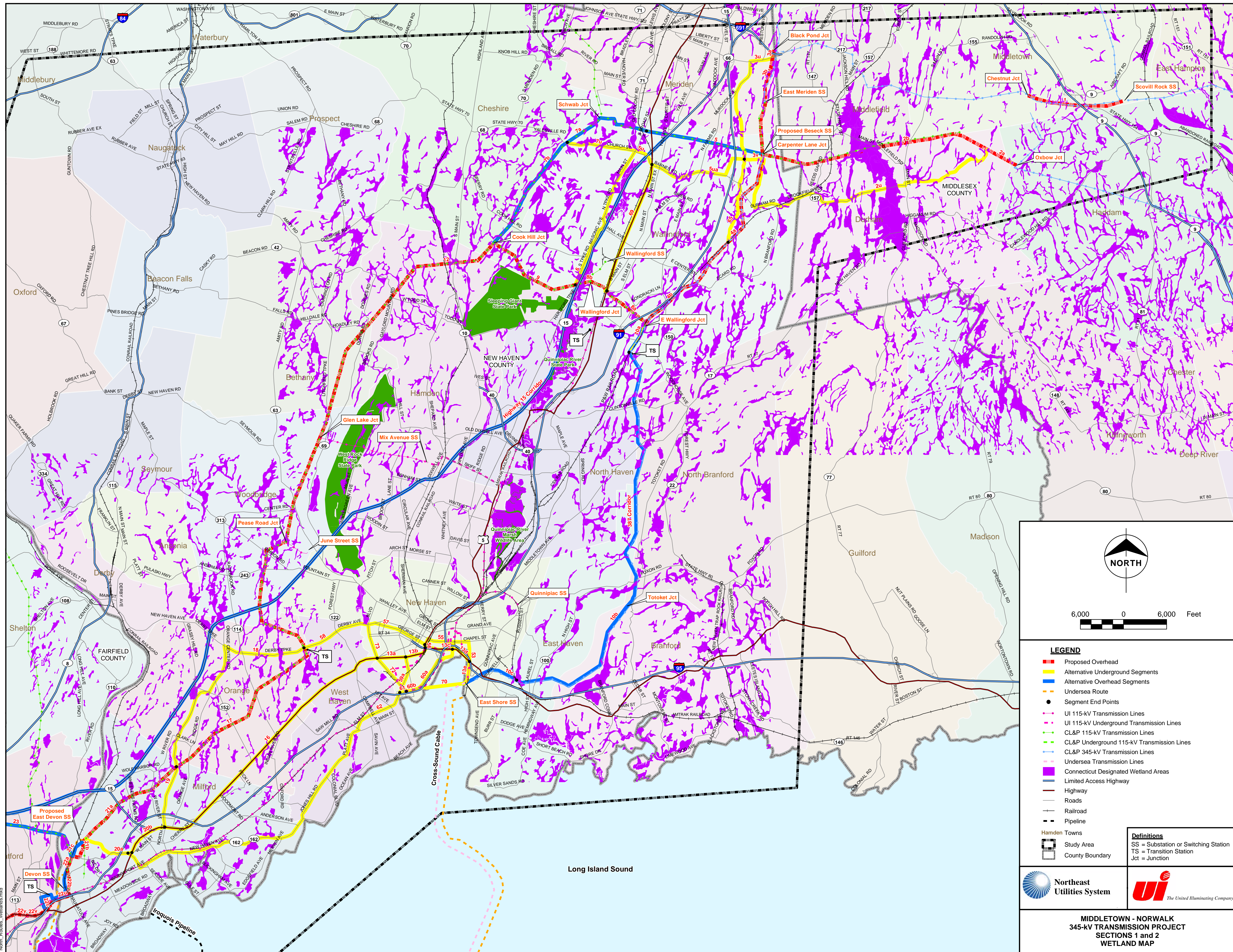
The Connecticut Light and Power Company

The United Illuminating Company


By: Anne Bartosewicz
Project Director, CL&P


By: John J. Prete
Project Director, UI

cc: Service List



Source: Wetland soils from Connecticut Department of Environmental Protection and USDA/NRCS.

LEGEND

- Proposed Overhead
- Alternative Underground Segments
- Alternative Overhead Segments
- Undersea Route
- Segment End Points
- UI 115-kV Transmission Lines
- UI 115-kV Underground Transmission Lines
- CL&P 115-kV Transmission Lines
- CL&P Underground 115-kV Transmission Lines
- CL&P 345-kV Transmission Lines
- Undersea Transmission Lines
- Connecticut Designated Wetland Areas
- Limited Access Highway
- Highway
- Roads
- Railroad
- Pipeline

Hamden Towns

- Study Area
- County Boundary

Definitions

- SS = Substation or Switching Station
- TS = Transition Station
- Jct = Junction

Northeast Utilities System

UI
The United Illuminating Company

**MIDDLETOWN - NORWALK
345-kV TRANSMISSION PROJECT
SECTIONS 1 and 2
WETLAND MAP**