



January 27, 2005

VIA HAND DELIVERY AND ELECTRONIC MAIL

Pamela B. Katz
Chairman
Connecticut Siting Council
10 Franklin Square
New Britain, CT 06505

Re: **Docket No. 272**

Dear Chairman Katz:

During the hearing held on January 20th, you asked the Companies to provide mapping for a route variation on the property of the Jewish Community Center in Woodbridge, as well as magnetic field calculations associated with the use of low magnetic field designs along this route variation. In response to this request, enclosed are an original and twenty copies of the following:

- Two aerial maps, each depicting a different option (referred to as "Option A" and "Option B") for the route variation. Calculated magnetic fields are shown on each map at the corner of the Jewish Community Center building, the deck of the swimming pool, and the pitcher's mound of baseball diamond based upon the "15 GW Case." In addition, each of these maps shows an area within 300 feet of the outermost conductor on each side of the relocated ROW;
- Cross section drawings for the typical in-line structures that lead up to the relocated ROW and for the angle structures necessary for Options A and B.



**Connecticut
Light & Power**

The Northeast Utilities System



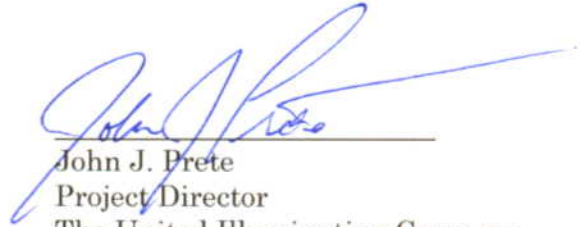
The United Illuminating Company

Hard copies of these documents are being provided to counsel for the Jewish Community Center. An electronic version of these documents is being provided to the service list.

Sincerely,

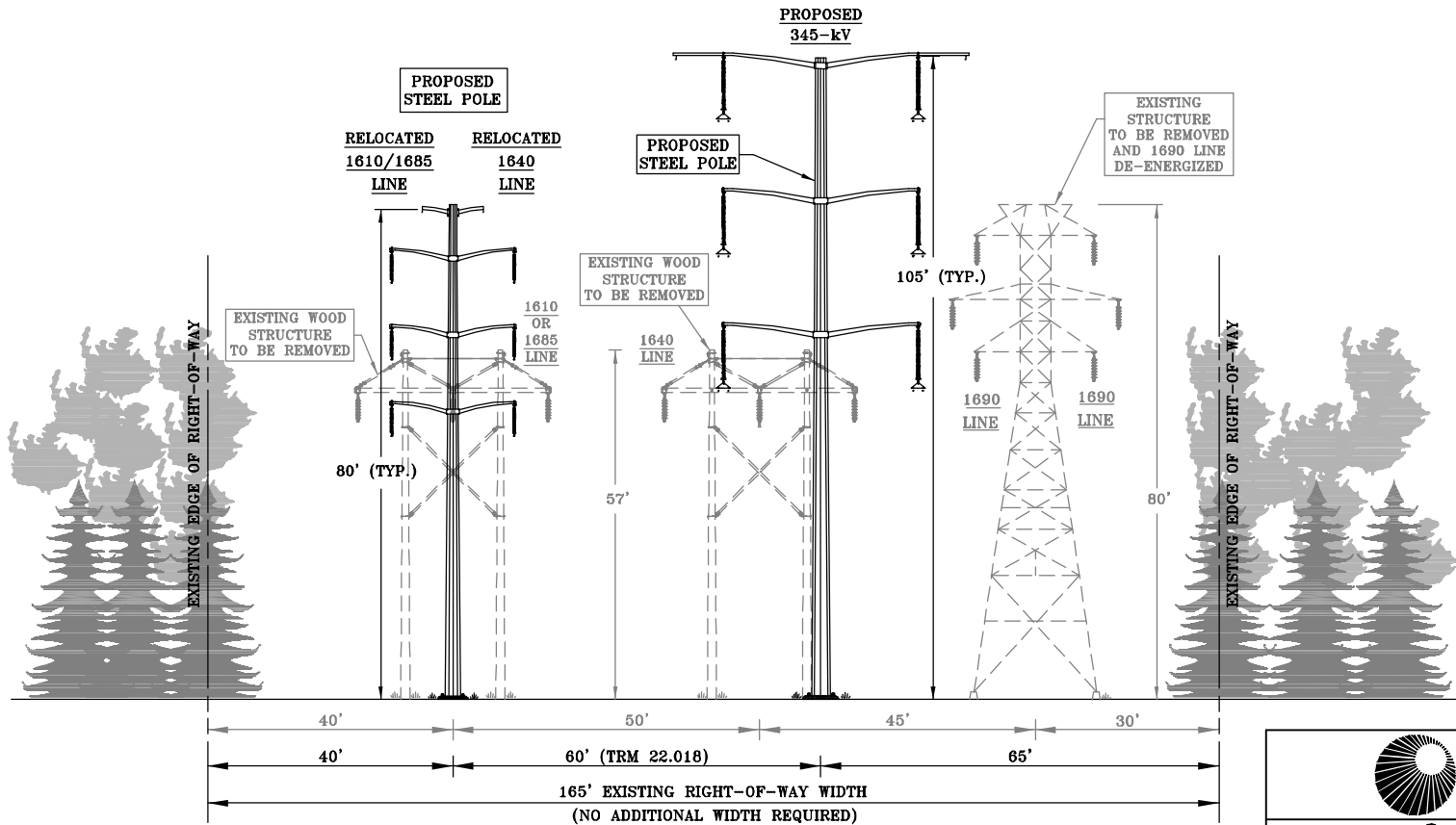


Anne Bartosewicz
Project Director
Northeast Utilities Service Company



John J. Prete
Project Director
The United Illuminating Company

cc: Service List



NOTE: TRM 22.018 ALLOWS FOR THE PLACEMENT OF ADJACENT STRUCTURES CLOSER TOGETHER BUT LIMITS THE AMOUNT OF STAGGER THAT CAN OCCUR.

LOOKING SOUTH
 HAMDEN TOWN LINE TO EAST DEVON S/S
 IN THE TOWNS OF HAMDEN,
 BETHANY, WOODBRIDGE AND ORANGE
 AND
 THE CITIES OF WEST HAVEN AND MILFORD

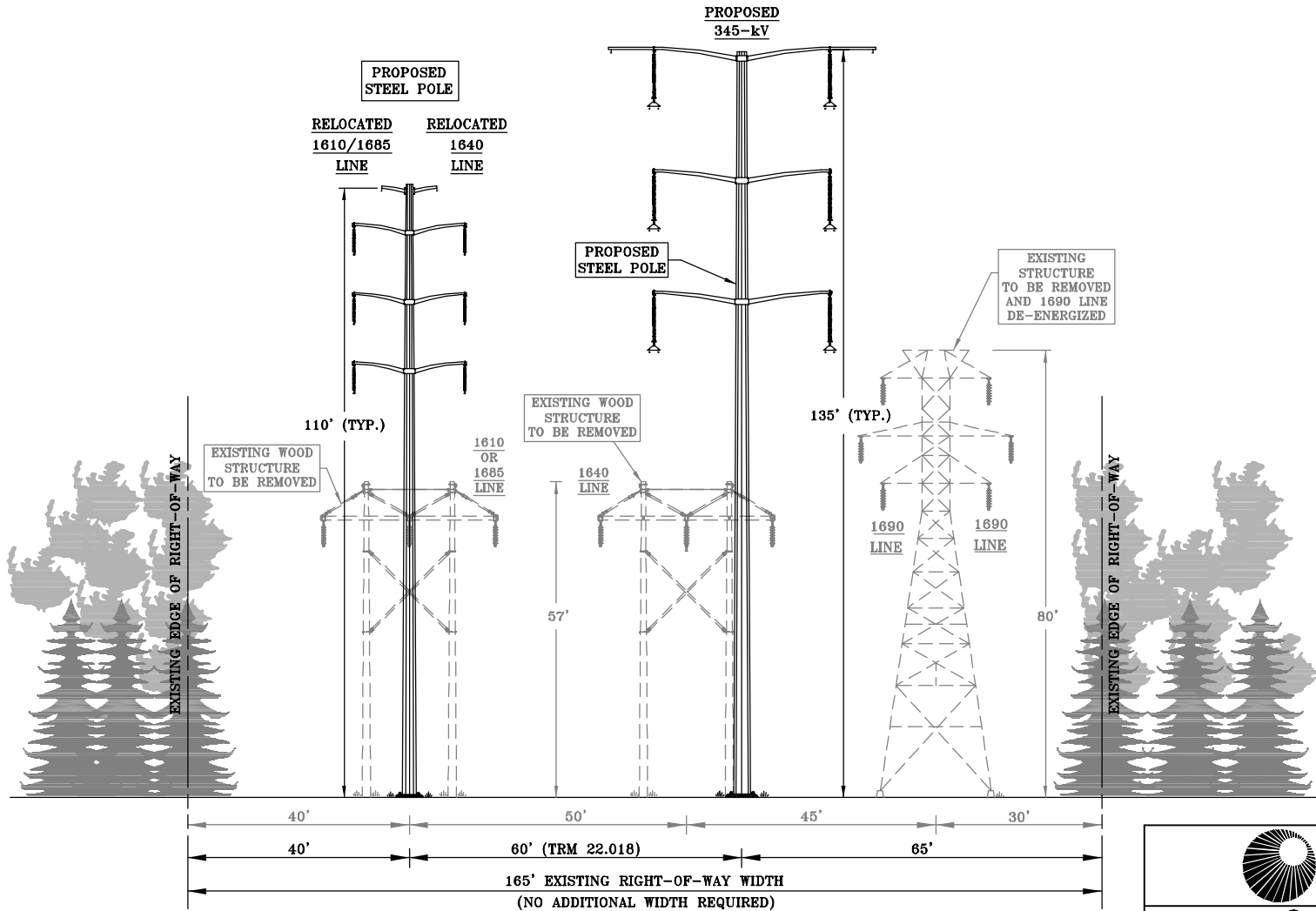
NOTE: SEE INDEX MAP FOR
 LOCATION OF CROSS SECTION



TITLE
**TYPICAL CROSS SECTION
 MIDDLETOWN - NORWALK
 345-kV TRANSMISSION LINE**

BY	JMH - BMMcd	CHKD		APP	
DATE	01/2005	DATE		DATE	
SCALE	N.T.S.	MICROFILM DATE		DWG. NO.	XS-001
P.A. #				FIGURE 8B LEMF	

H:\NURS03\300203\Code\POW 4-revision\Wind Section\SECTION_8B_LDW.dwg (Week) 01-25-2005 15:45 DDL BMMcd



NOTE: TRM 22.018 ALLOWS FOR THE PLACEMENT OF ADJACENT STRUCTURES CLOSER TOGETHER BUT LIMITS THE AMOUNT OF STAGGER THAT CAN OCCUR.

LOOKING SOUTH
 HAMDEN TOWN LINE TO EAST DEVON S/S
 IN THE TOWNS OF HAMDEN,
 BETHANY, WOODBRIDGE AND ORANGE
 AND
 THE CITIES OF WEST HAVEN AND MILFORD

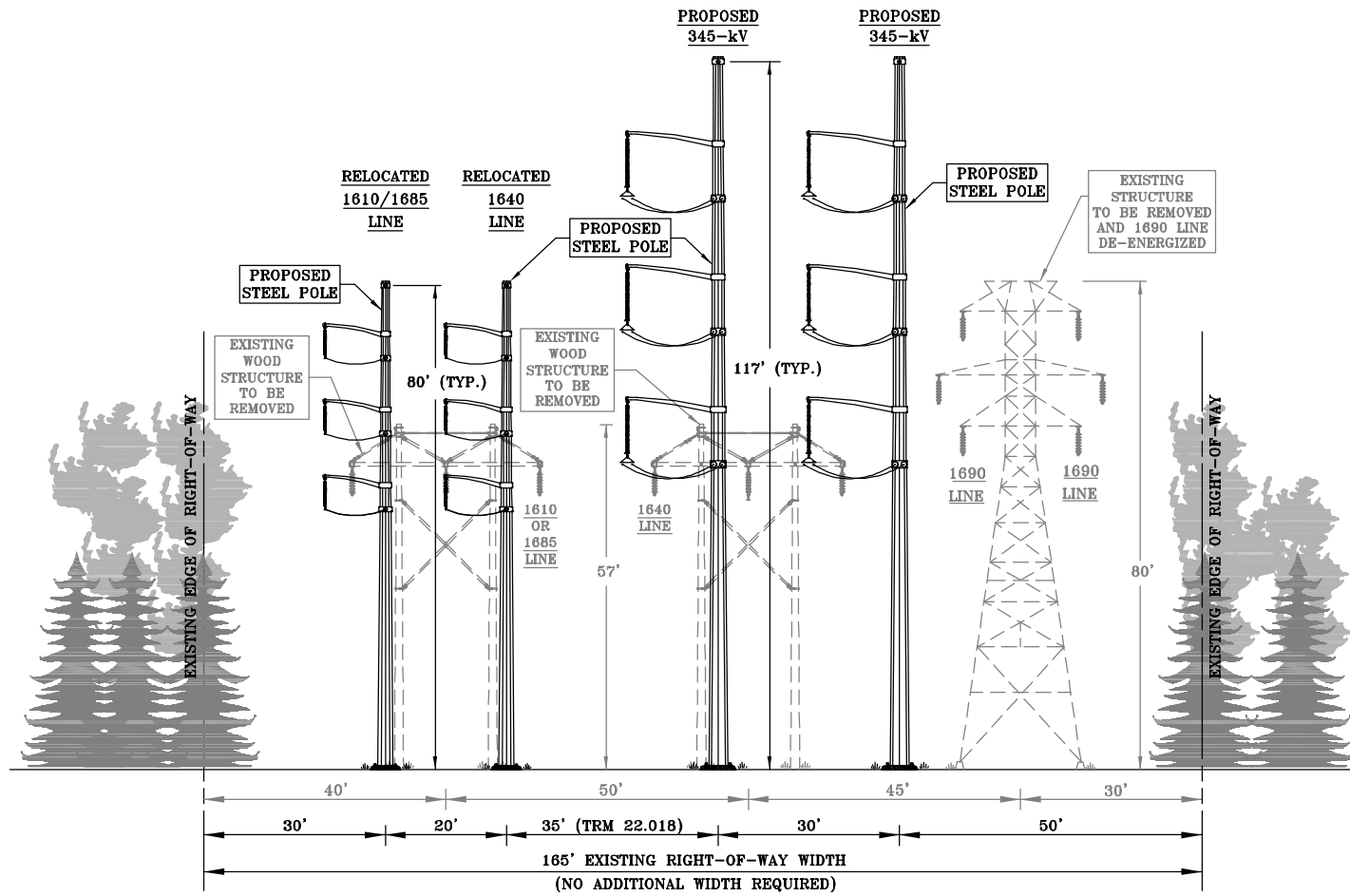
NOTE: SEE INDEX MAP FOR
 LOCATION OF CROSS SECTION



TITLE
**TYPICAL CROSS SECTION
 MIDDLETOWN - NORWALK
 345-kV TRANSMISSION LINE**

BY JMH - BMMcd	CHKD	APP	APP
DATE 01/2005	DATE	DATE	DATE
SCALE N.T.S.	MICROFILM DATE	DWG. No. XS-001	
P.A. #		FIGURE 8B LEMF +30	

RE: \NURS\36020\Code\POW 11-middle\Wind Section\SECTION_BLDG_LEMF_JH.dwg (New) 01-25-2005 12:48:01 DDL BMMcD

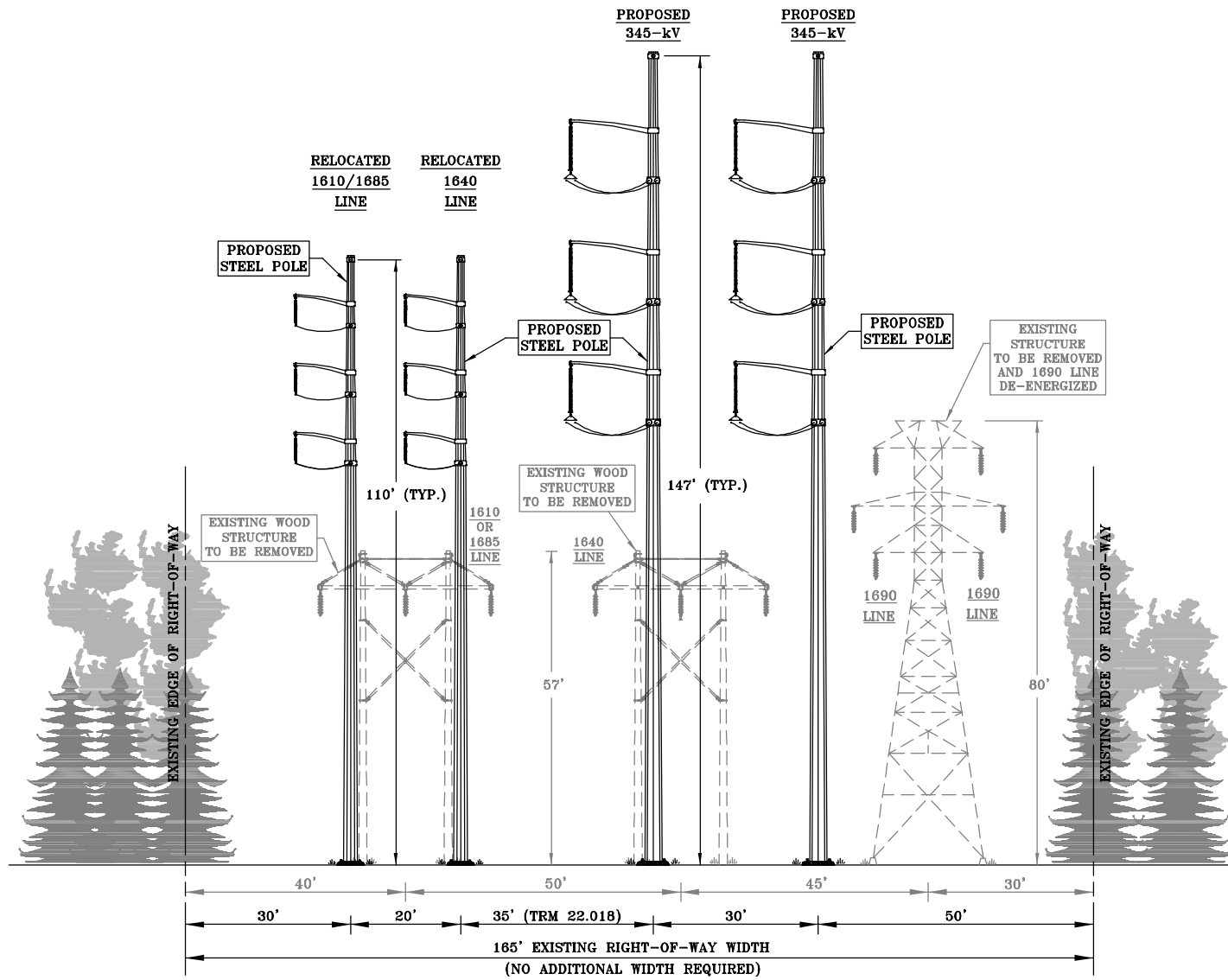


LOOKING SOUTH
 JEWISH COMMUNITY CENTER OF GREATER NEW HAVEN
 IN THE TOWN OF WOODBRIDGE
 NOTE: SEE INDEX MAP FOR
 LOCATION OF CROSS SECTION

NOTE: TRM 22.018 ALLOWS FOR THE PLACEMENT OF ADJACENT STRUCTURES CLOSER TOGETHER BUT LIMITS THE AMOUNT OF STAGGER THAT CAN OCCUR.

Northeast Utilities System			
The United Illuminating Company			
TITLE TYPICAL CROSS SECTION MIDDLETOWN - NORWALK 345-kV TRANSMISSION LINE			
BY	CHKD	APP	APP
DATE	DATE	DATE	DATE
SCALE	MICROFILM DATE		DWG. NO. XS-001
P.A. #			FIGURE 8JCC LEMF HA

RE:\WORK\36020\Code\POW K-middle\Wind Section\SECTION_BLOC_LEMF_HA_Pole.dwg (use) 01-25-2005 13:51 DDL BMMGD



LOOKING SOUTH
 JEWISH COMMUNITY CENTER OF GREATER NEW HAVEN
 IN THE TOWN OF WOODBRIDGE
 NOTE: SEE INDEX MAP FOR
 LOCATION OF CROSS SECTION

NOTE: TRM 22.018 ALLOWS FOR THE PLACEMENT OF
 ADJACENT STRUCTURES CLOSER TOGETHER
 BUT LIMITS THE AMOUNT OF STAGGER THAT
 CAN OCCUR.

Northeast Utilities System			
<i>The United Illuminating Company</i>			
TITLE TYPICAL CROSS SECTION MIDDLETOWN - NORWALK 345-kV TRANSMISSION LINE			
BY	JMH - BMMGD	CHKD	APP
DATE	01/2005	DATE	DATE
SCALE	N.T.S.	MICROFILM DATE	DWG. No. XS-001
P.A. #			FIGURE 8JCC LEMF HA +30