

DRAFT

Docket No. 388
1990 Litchfield Turnpike, Woodbridge

Crown Castle Request to Reopen and Modify Certificate

And

TS-VER-167-251217 – Cellco Partnership d/b/a Verizon Wireless notice of intent to modify an existing telecommunications facility located at 1990 Litchfield Turnpike, Woodbridge, Connecticut.

**Staff Report
April 24, 2026**

Notice

On August 11, 2010, the Connecticut Siting Council (Council) issued a Certificate of Environmental Compatibility and Public Need (Certificate) to New Cingular Wireless PCS, LLC (AT&T) for the construction, maintenance and operation of a 170-foot telecommunications facility at 1990 Litchfield Turnpike, Woodbridge, Connecticut.

The Council’s Docket No. 388 Decision and Order (D&O), Condition No. 1 specified, that “The tower shall be constructed as a monopole with flush-mounted antennas...”

On March 25, 2026, Crown Castle USA Inc. (Crown), on behalf of Cellco Partnership d/b/a Verizon Wireless (Cellco), submitted a Request to Reopen the Docket No. 388 Certificate and Modify D&O Condition No. 1 to allow for other types of antenna mounts to be used at this facility, thereby increasing opportunities for tower sharing from entities that cannot utilize flush-mounted antennas with current or future antenna designs and to promote safety of tower maintenance personnel.¹

On March 27, 2026, the Council issued a memorandum to the original Docket No. 388 service list requesting comments or statements of position in writing to the Council with respect to whether the Request to Reopen and Modify the Certificate should be granted or denied and whether a public hearing should be held on this request by April 9, 2026. No comments were received.

¹ Council Docket No. 242- https://portal.ct.gov/-/media/csc/1_dockets-medialibrary/media_do200_299/d242-reopen-sr-final_a.pdf?rev=e0b541560ae2470db40fbf7d1dc57150&hash=AD1610E3307ADEF60AAB48A9D4DF8CB;
Docket No. 253 - https://portal.ct.gov/-/media/csc/1_dockets-medialibrary/media_do1_99/do253reopening20190215certpkgreissuepdf.pdf?rev=66f8b1451c7d4d6eaa0aef4808786928&hash=7DE65F822022862AAA500F48493C6669;
Docket No. 261 - https://portal.ct.gov/-/media/csc/1_dockets-medialibrary/media_do200_299/do261/motionreopen_t-mobile/do261-certpkg_reissue-final.pdf?rev=1681e13b4caf49c783ebde3a9a07f6ef&hash=11C17831B4B4D57C2D93E92F9A19B6AD;
Docket No. 385 - https://portal.ct.gov/-/media/csc/1_dockets-medialibrary/media_do300-399/docket_385/att_motionreopen/38520190719certpkgreissuepdf.pdf?rev=5426164557df472ea09199d080fe65f3&hash=ECBB3890E4610E159EAC7F1B6118A377;
Docket No. 391 - https://portal.ct.gov/-/media/csc/1_dockets-medialibrary/media_do300-399/docket_391/attmotionreopen/39120190719certpkgreissuepdf.pdf?rev=8b15cdf5c6c3447eaaf47a1d8eb6e9b3&hash=7AA1D8CF9039B7D5982A80E2CFB33900

Existing Facility

On December 10, 2010, the Council approved a Development and Management (D&M) Plan for this facility that included a 170-foot monopole and an AT&T installation consisting of three flush-mounted panel antennas at centerline heights of 167 feet, 157 feet and 147 feet above ground level (agl).

The Town of Woodbridge has an antenna installed at the top of the tower.

On September 7, 2012 and March 24, 2025, the Council approved requests for exempt modification from AT&T. Currently AT&T maintains three panel antennas at 167 feet agl; three panel antennas and nine remote radio units (RRUs) at 157 feet agl; and three panel antennas at 147 feet agl in a flush-mounted configuration.

Cellco Tower Share Request

On December 17, 2025, Crown, on behalf of Cellco, submitted a request for tower sharing to collocate antennas at the 118-foot level of the tower using a platform mount (TS-VER-167-251217).

On January 14, 2026, the Council deemed the tower share request incomplete because the proposed antenna mounting design would violate Condition No. 1 of the D&O. The Council requested that Crown modify the tower share request to include flush-mounted antennas consistent with Condition No. 1 of the D&O or, alternatively, submit a Motion to Reopen the Council's August 11, 2010 Certificate to modify D&O Condition No. 1 requiring flush-mounted antennas no later than January 28, 2026.

Between January 21 and March 17, 2026, Crown requested extensions of time to respond to the Council's notice of incomplete tower share request as it prepared the Request to Reopen and Modify Docket No. 388 D&O Condition No. 1. The current deadline to submit complete information is June 25, 2026.

Request to Reopen and Modify the Certificate

In response to the Council's January 14, 2026 tower share request incomplete letter, Crown's March 25, 2026 Request to Reopen and Modify the Certificate seeks to allow the use of platform antenna mounts and other antenna mounting designs to promote tower sharing and enhance existing wireless services, as detailed below:

- The flush-mounted antenna design restricts the ability of wireless carriers, including Cellco, from upgrading existing antennas and other equipment or collocating on the tower;
- Cellco is unable to meet increasing capacity and coverage demands with the flush-mounted configuration and requires a platform to accommodate the required antennas and other equipment needed to meet such capacity and coverage demands;
- Crown would not be able to proceed with the request for tower sharing for Cellco without a platform mounted antenna configuration; and
- The change to a platform-mounted configuration is not expected to result in a significant visual impact.

Notice of the Cellco tower share request was provided to the Town and the property owner on or about December 15, 2025. Notice of Crown's Request to Reopen and Modify the Certificate was provided to the Town and the property owner on or about March 16, 2026.

If the Request to Reopen and Modify the Certificate is approved by the Council, Cellco seeks to install three 700/850 MHz panel antennas, three 1900/2100 MHz panel antennas, three 3700 MHz panel antennas, and six RRUs on a platform antenna mount at a centerline height of 118 feet agl. Two cables would be

installed within the tower. The antennas would be capable of providing 5G services. Cellco also intends to install one equipment cabinet and one battery cabinet on a new 20-foot by 11-foot concrete pad within the existing compound. One utility frame with a telco cabinet and an electrical cabinet would also be installed on the concrete pad. An approximately 11-foot 6-inch long by 9-foot wide by 10-foot 6-inch tall canopy would be installed over the equipment. A GPS antenna, a telco/electric line and conduits, two work lights and ice bridge would also be installed.

A Professional Engineer duly licensed in the State of Connecticut has certified that the structure is adequate to support the proposed loading on platform antenna mounts with certain recommendations.

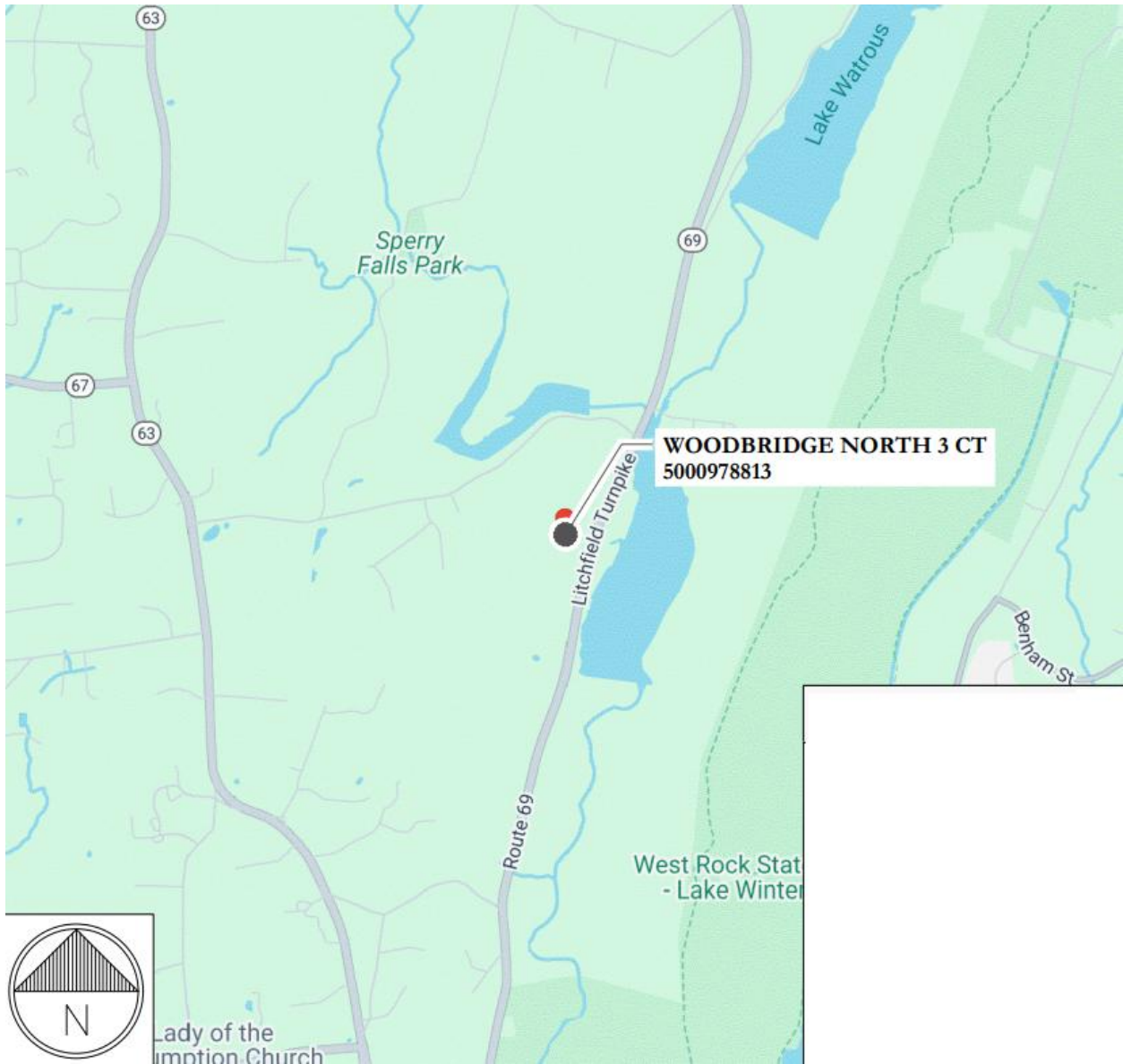
The calculated cumulative worst-case power density would be 4.83% of the applicable limit using a far field approximation.

Conclusion

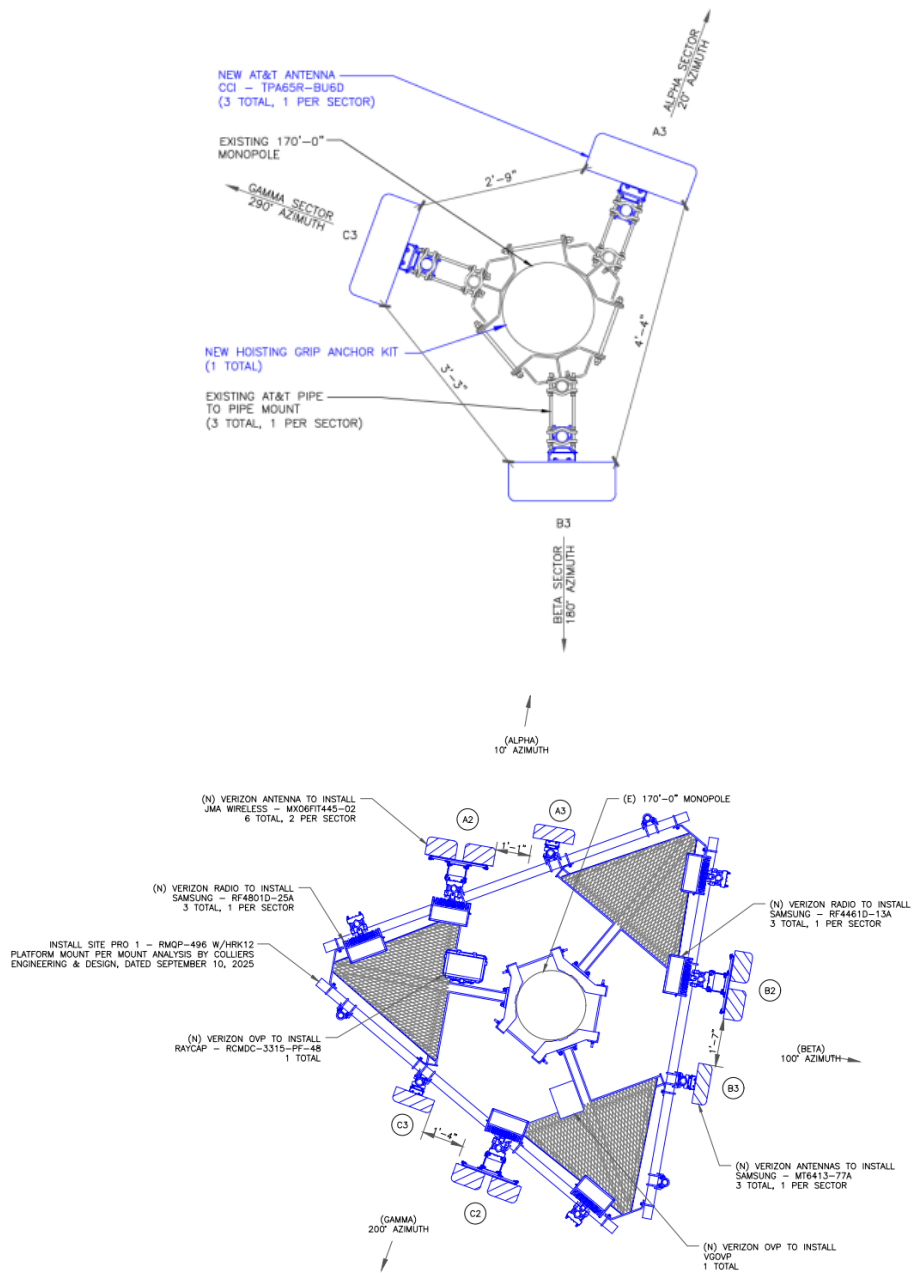
If approved, staff recommends the following conditions:

1. Approval of any changes be delegated to Council staff;
2. Submit a notice of transfer of Certificate from AT&T to Crown in accordance with CGS §16-50k(b). In addition, both the Certificate Holder/transferor and the transferee shall provide the Council a written agreement as to the entity responsible for any quarterly assessment charges under CGS §16-50v(b)(2) that may be associated with this facility, including contact information for the individual acting on behalf of the transferee;
3. Antennas and equipment shall be installed in accordance with the Mount Analysis prepared by Colliers Engineering and Design dated September 10, 2025 and stamped and signed by Sean O'Sullivan;
4. Within 45 days following completion of equipment installation, Cellco shall provide documentation certified by a Professional Engineer that its installation complied with the recommendations of the Mount Analysis;
5. RF access restriction and caution signage shall be installed at the site in compliance with FCC guidance;
6. Deployment of any 5G services must comply with FCC and FAA guidance relative to air navigation, as applicable;
7. Any deviation from the proposed modification as specified in this notice and supporting materials submitted to the Council shall render this acknowledgement invalid;
8. Any material changes to the proposed installation as specified in the original request and supporting materials filed with the Council shall require an explicit request for modification to the Council, including all relevant information regarding the proposed change with cumulative worst-case modeling of radio frequency exposure at the closest point of uncontrolled access to the tower base, consistent with Federal Communications Commission, Office of Engineering and Technology, Bulletin 65;
9. The Council shall be notified in writing at least two weeks prior to the commencement of site construction activities;
10. Within 45 days after completion of construction, the Council shall be notified in writing that construction has been completed **along with a representative photograph of the facility modification**;
11. Any nonfunctioning antenna and associated antenna mounting equipment, or other equipment at this facility owned and operated by Cellco shall be removed within 60 days of the date the antenna or equipment ceased to function;
12. The validity of this action shall expire one year from the date of this letter; and
13. Cellco may file a request for an extension of time beyond the one year deadline provided that such request is submitted to the Council not less than 60 days prior to the expiration.

Existing Facility Site



AT&T's Existing and Cellco's Proposed Antenna Configurations



Proposed Tower Elevation Configuration

