

# Exhibit P

Visual Impact

Figure 3: USDA Websoil Survey Map

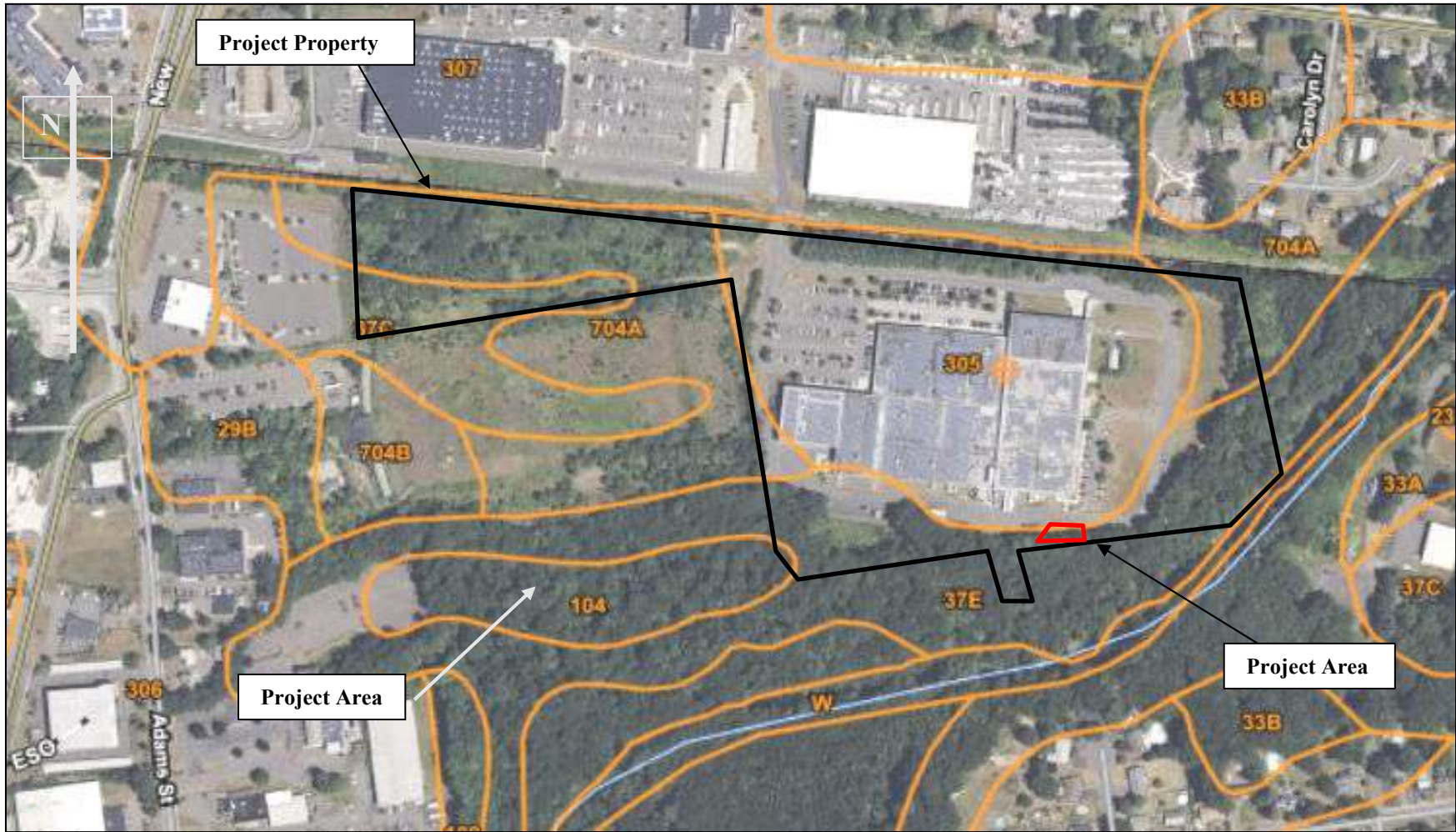


Figure 3: From USDA NRCS websoil survey.

1,000'

Figure 5a: Historic Sites of the Area (1855 Map)

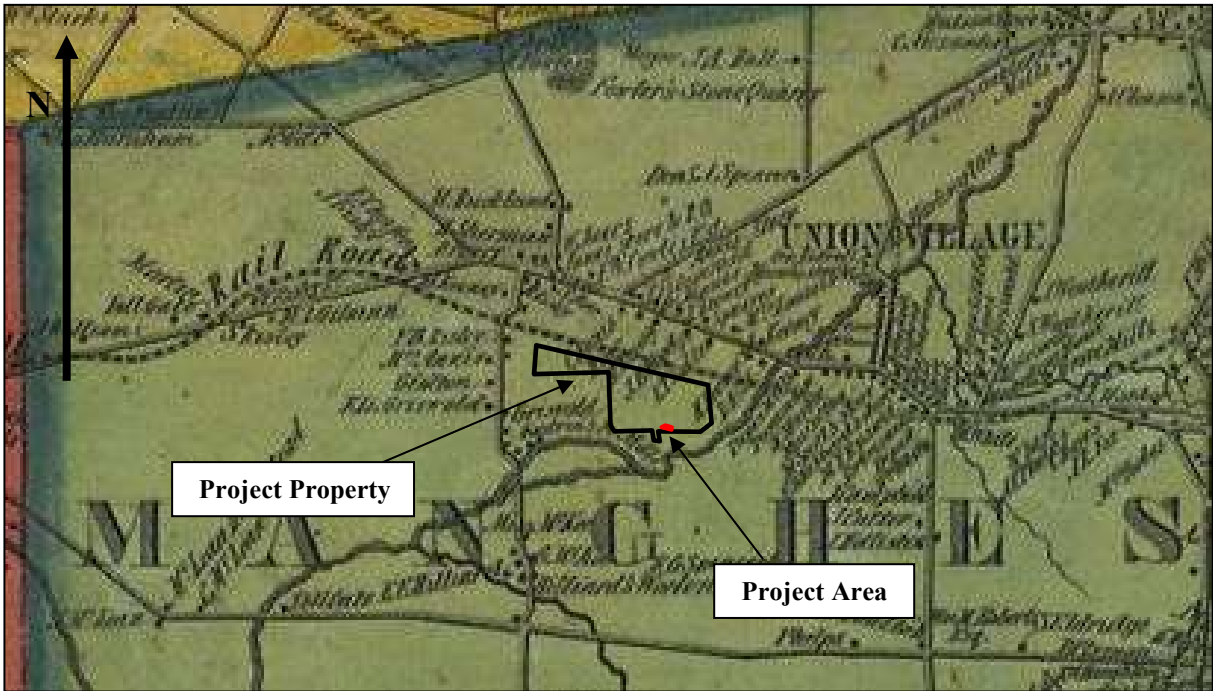


Figure 5a: From Woodford, 1855.

Figure 5b: Historic Sites of the Area (1869 Map)

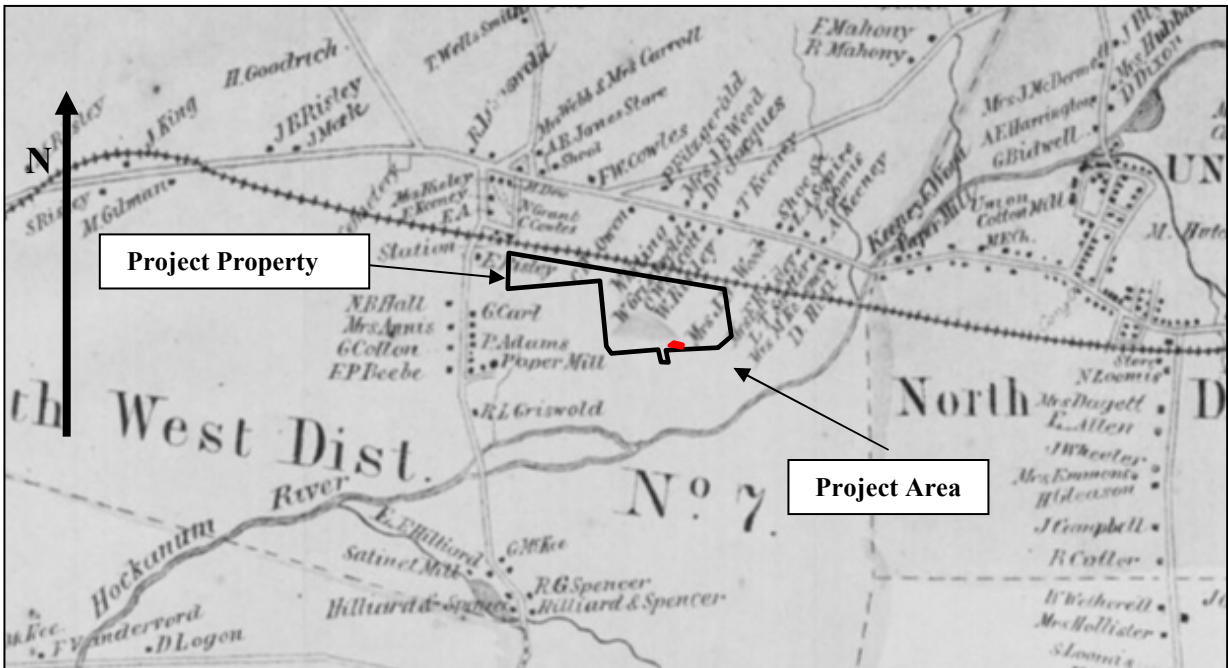


Figure 5b: From Baker and Tilden 1869.

**Figure 6: Western Arm of the Project Property**



*Figure 6: West view of the eastern end of the western arm of the project property, covered with scrub growth and tall grasses. Allied Way and access parking area in foreground, just south of railroad crossing.*

**Figure 7: Allied Printing Building**



*Figure 7: Southeast view of the Allied Printing building, parking lot and Allied Way in foreground – Allied Way wraps east on south side of building.*

**Figure 8: Project Area – East View**



*Figure 8: Project area located in grassy area to the east of the fire hydrant, south of paved driveway. Allied Printing building at left.*

**Figure 9: Project Area – West View**



*Figure 9: West view of the project area, driveway and Allied Printing building at right, refueling station in background.*