

# Site Plans

Issued for	Permitting
Date Issued	July 14, 2025
Latest Issue	July 14, 2025

## GCE Artillery Road Solar Project

Artillery Road  
Woodbury, CT 06798



### Owner

Beth & Carl Siemon & Taylor Markovits  
9693 Wilshire Lake Blvd  
Naples, FL 34109

### Applicant

Greenskies Clean Energy, LLC  
127 Washington Avenue  
West Building, Garden Level  
North Haven, CT 06473

**Assessor's Map: 79**  
**Lot: 15**

Sheet Index			Reference Drawings		
No.	Drawing Title	Latest Issue	No.	Drawing Title	Latest Issue
C1.00	Legend and General Notes	July 14, 2025	Sv-1	Plan of Land in Woodbury, CT	November 26, 2024
C2.00	Overall Site Plan	July 14, 2025			
C2.01	Layout and Materials Plan 1	July 14, 2025			
C2.02	Layout and Materials Plan 2	July 14, 2025			
C2.03	Layout and Materials Plan 3	July 14, 2025			
C3.01	Grading, Drainage & Utility Plan 1	July 14, 2025			
C3.02	Grading, Drainage & Utility Plan 2	July 14, 2025			
C3.03	Grading, Drainage & Utility Plan 3	July 14, 2025			
C4.01	Erosion and Sediment Control Plan 1	July 14, 2025			
C4.02	Erosion and Sediment Control Plan 2	July 14, 2025			
C4.03	Erosion and Sediment Control Plan 3	July 14, 2025			
C5.01	Site Details 1	July 14, 2025			
C5.02	Site Details 2	July 14, 2025			



**Wetland Scientist (VHB)**  
Sara Berryman, CSS  
100 Great Meadow Road  
Suite 200  
Wethersfield, CT 06109  
860.807.4300

**Civil Engineer (VHB)**  
Steve Kochis, PE  
100 Great Meadow Road  
Suite 200  
Wethersfield, CT 06109  
860.807.4300

**Surveyor (Northeast Survey Consultants)**  
Charles G. Gidman, PLS  
3 Ferry Street  
Studio 1 East  
Easthampton, MA 01027  
413.203.5144



100 Great Meadow Road  
Suite 200  
Wethersfield, CT 06109  
860.807.4300

### Legend

Exist.		Prop.		Exist.		Prop.	
		PROPERTY LINE				CONCRETE	
		PROJECT LIMIT LINE				HEAVY DUTY PAVEMENT	
		RIGHT-OF-WAY/PROPERTY LINE				BUILDINGS	
		EASEMENT				RIPRAP	
		BUILDING SETBACK				CONSTRUCTION EXIT	
		PARKING SETBACK		27.35 TC x	27.35 TC x	TOP OF CURB ELEVATION	
		BASELINE		26.85 BC x	26.85 BC x	BOTTOM OF CURB ELEVATION	
		CONSTRUCTION LAYOUT		132.75 x	132.75 x	SPOT ELEVATION	
		ZONING LINE		45.0 TW x 38.0 BW x	45.0 TW x 38.0 BW x	TOP & BOTTOM OF WALL ELEVATION	
		TOWN LINE				BORING LOCATION	
		LIMIT OF DISTURBANCE				TEST PIT LOCATION	
		WETLAND LINE WITH FLAG				MONITORING WELL	
		FLOODPLAIN				UNDERDRAIN	
		BORDERING LAND SUBJECT TO FLOODING				DRAIN	
		WETLAND BUFFER ZONE				ROOF DRAIN	
		NO DISTURB ZONE				SEWER	
		200' RIVERFRONT AREA				FORCE MAIN	
						OVERHEAD WIRE	
		EDGE OF PAVEMENT				WATER	
		BITUMINOUS BERM				FIRE PROTECTION	
		BITUMINOUS CURB				DOMESTIC WATER	
		CONCRETE CURB				GAS	
		CURB AND GUTTER				ELECTRIC	
		EXTRUDED CONCRETE CURB				STEAM	
		MONOLITHIC CONCRETE CURB				TELEPHONE	
		PRECAST CONC. CURB				FIRE ALARM	
		SLOPED GRAN. EDGING				CABLE TV	
		VERT. GRAN. CURB				CATCH BASIN CONCENTRIC	
		LIMIT OF CURB TYPE				CATCH BASIN ECCENTRIC	
		SAWCUT				DOUBLE CATCH BASIN CONCENTRIC	
						DOUBLE CATCH BASIN ECCENTRIC	
						GUTTER INLET	
						DRAIN MANHOLE CONCENTRIC	
						DRAIN MANHOLE ECCENTRIC	
						TRENCH DRAIN	
						PLUG OR CAP	
						CLEANOUT	
						FLARED END SECTION	
						HEADWALL	
						SEWER MANHOLE CONCENTRIC	
						SEWER MANHOLE ECCENTRIC	
						CURB STOP & BOX	
						WATER VALVE & BOX	
						TAPPING SLEEVE, VALVE & BOX	
						FIRE DEPARTMENT CONNECTION	
						FIRE HYDRANT	
						WATER METER	
						POST INDICATOR VALVE	
						WATER WELL	
						GAS GATE	
						GAS METER	
						ELECTRIC MANHOLE	
						ELECTRIC METER	
						LIGHT POLE	
						TELEPHONE MANHOLE	
						TRANSFORMER PAD	
						UTILITY POLE	
						GUY POLE	
						GUY WIRE & ANCHOR	
						HAND HOLE	
						PULL BOX	
						MATCHLINE	

## Abbreviations

General	
ABAN	ABANDON
ACR	ACCESSIBLE CURB RAMP
ADJ	ADJUST
APPROX	APPROXIMATE
BIT	BITUMINOUS
BS	BOTTOM OF SLOPE
BWLL	BROKEN WHITE LANE LINE
CONC	CONCRETE
DYCL	DOUBLE YELLOW CENTER LINE
EL	ELEVATION
ELEV	ELEVATION
EV	ELECTRIC VEHICLE CHARGING SPACE
EX	EXISTING
FDN	FOUNDATION
FFE	FIRST FLOOR ELEVATION
GRAN	GRANITE
GTD	GRADE TO DRAIN
LA	LANDSCAPE AREA
LOD	LIMIT OF DISTURBANCE
MAX	MAXIMUM
MIN	MINIMUM
NIC	NOT IN CONTRACT
NTS	NOT TO SCALE
PERF	PERFORATED
PROP	PROPOSED
REM	REMOVE
RET	RETAIN
R&D	REMOVE AND DISPOSE
R&R	REMOVE AND RESET
SWEL	SOLID WHITE EDGE LINE
SWLL	SOLID WHITE LANE LINE
TS	TOP OF SLOPE
TYP	TYPICAL
Utility	
CB	CATCH BASIN
CMP	CORRUGATED METAL PIPE
CO	CLEANOUT
DCB	DOUBLE CATCH BASIN
DMH	DRAIN MANHOLE
CIP	CAST IRON PIPE
COND	CONDUIT
DIP	DUCTILE IRON PIPE
FES	FLARED END SECTION
FM	FORCE MAIN
F&G	FRAME AND GRATE
F&C	FRAME AND COVER
GI	GUTTER INLET
GT	GREASE TRAP
HDPE	HIGH DENSITY POLYETHYLENE PIPE
HH	HANDHOLE
HW	HEADWALL
HYD	HYDRANT
INV	INVERT ELEVATION
I=	INVERT ELEVATION
LP	LIGHT POLE
MES	METAL END SECTION
PIV	POST INDICATOR VALVE
PWW	PAVED WATER WAY
PVC	POLYVINYLCHLORIDE PIPE
RCP	REINFORCED CONCRETE PIPE
R=	RIM ELEVATION
RIM=	RIM ELEVATION
SMH	SEWER MANHOLE
TSV	TAPPING SLEEVE, VALVE AND BOX
UG	UNDERGROUND
UP	UTILITY POLE

## Notes

<div>General</div> <div>1. CONTRACTOR SHALL NOTIFY "CALL BEFORE YOU DIG" (811 OR 1-800-922-4455) AT LEAST 72 HOURS BEFORE EXCAVATING.</div> <div>2. CONTRACTOR SHALL BE RESPONSIBLE FOR SITE SECURITY AND JOB SAFETY. CONSTRUCTION ACTIVITIES SHALL BE IN ACCORDANCE WITH OSHA STANDARDS AND LOCAL REQUIREMENTS.</div> <div>3. WORK WITHIN THE LOCAL RIGHTS-OF-WAY SHALL CONFORM TO LOCAL MUNICIPAL STANDARDS.</div> <div>4. UPON AWARD OF CONTRACT, CONTRACTOR SHALL MAKE NECESSARY CONSTRUCTION NOTIFICATIONS AND APPLY FOR AND OBTAIN NECESSARY PERMITS, PAY FEES, AND POST BONDS ASSOCIATED WITH THE WORK INDICATED ON THE DRAWINGS, IN THE SPECIFICATIONS, AND IN THE CONTRACT DOCUMENTS. DO NOT CLOSE OR OBSTRUCT ROADWAYS, SIDEWALKS, AND FIRE HYDRANTS, WITHOUT APPROPRIATE PERMITS.</div> <div>5. AREAS OUTSIDE THE LIMITS OF PROPOSED WORK DISTURBED BY THE CONTRACTOR'S OPERATIONS SHALL BE RESTORED BY THE CONTRACTOR TO THEIR ORIGINAL CONDITION AT THE CONTRACTOR'S EXPENSE.</div> <div>6. IN THE EVENT THAT SUSPECTED CONTAMINATED SOIL, GROUNDWATER, AND OTHER MEDIA ARE ENCOUNTERED DURING EXCAVATION AND CONSTRUCTION ACTIVITIES BASED ON VISUAL, OLFACTORY, OR OTHER EVIDENCE, THE CONTRACTOR SHALL STOP WORK IN THE VICINITY OF THE SUSPECT MATERIAL TO AVOID FURTHER SPREADING OF THE MATERIAL, AND SHALL NOTIFY THE OWNER IMMEDIATELY SO THAT THE APPROPRIATE TESTING AND SUBSEQUENT ACTION CAN BE TAKEN.</div> <div>7. CONTRACTOR SHALL PREVENT DUST, SEDIMENT, AND DEBRIS FROM EXITING THE SITE AND SHALL BE RESPONSIBLE FOR CLEANUP, REPAIRS AND CORRECTIVE ACTION IF SUCH OCCURS.</div> <div>8. DAMAGE RESULTING FROM CONSTRUCTION LOADS SHALL BE REPAIRED BY THE CONTRACTOR AT NO ADDITIONAL COST TO OWNER.</div> <div>9. CONTRACTOR SHALL CONTROL STORMWATER RUNOFF DURING CONSTRUCTION TO PREVENT ADVERSE IMPACTS TO OFF SITE AREAS, AND SHALL BE RESPONSIBLE TO REPAIR RESULTING DAMAGES, IF ANY, AT NO COST TO OWNER.</div> <div>10. THIS PROJECT DISTURBS MORE THAN ONE ACRE OF LAND AND WILL REQUIRE ADHERENCE TO AND REGISTRATION FOR THE CONNECTICUT DEPARTMENT OF ENERGY &amp; ENVIRONMENTAL PROTECTION GENERAL CHARGE FOR THE DISCHARGE OF STORMWATER AND DEWATERING WASTEWATERS FROM CONSTRUCTION ACTIVITIES, EFFECTIVE NOVEMBER 25, 2022, OR AS AMENDED.</div> <div>11. STAGGING AND STOCKPILE AREAS SHALL NOT BE LOCATED WITHIN ANY WETLAND AND ABUTTING RESOURCE AREA AND SHALL BE LOCATED WITHIN THE LIMITS OF DISTURBANCE.</div>	<div>Erosion Control</div> <div>1. PRIOR TO STARTING ANY OTHER WORK ON THE SITE, THE CONTRACTOR SHALL NOTIFY APPROPRIATE AGENCIES AND SHALL INSTALL EROSION CONTROL MEASURES AS SHOWN ON THE PLANS AND AS IDENTIFIED IN FEDERAL, STATE, AND LOCAL APPROVAL DOCUMENTS PERTAINING TO THIS PROJECT.</div> <div>2. CONTRACTOR OR QUALIFIED INSPECTOR SHALL INSPECT AND MAINTAIN EROSION CONTROL MEASURES ON A WEEKLY BASIS OR MORE FREQUENTLY AS NEEDED, (MINIMUM) OR AS REQUIRED PER THE STORMWATER POLLUTION PREVENTION PLAN (SWPPP). THE CONTRACTOR SHALL ADDRESS DEFICIENCIES AND MAINTENANCE ITEMS WITHIN TWENTY-FOUR HOURS OF INSPECTION. CONTRACTOR SHALL PROPERLY DISPOSE OF SEDIMENT SUCH THAT IT DOES NOT ENCUMBER OTHER DRAINAGE STRUCTURES AND PROTECTED AREAS.</div> <div>3. CONTRACTOR SHALL BE FULLY RESPONSIBLE TO CONTROL CONSTRUCTION SUCH THAT SEDIMENTATION SHALL NOT AFFECT REGULATORY PROTECTED AREAS, WHETHER SUCH SEDIMENTATION IS CAUSED BY WATER, WIND, OR DIRECT DEPOSIT.</div> <div>4. CONTRACTOR SHALL PERFORM CONSTRUCTION SEQUENCING SUCH THAT EARTH MATERIALS ARE EXPOSED FOR A MINIMUM AMOUNT OF TIME BEFORE THEY ARE COVERED, SEEDED, OR OTHERWISE STABILIZED TO PREVENT EROSION.</div> <div>5. UPON COMPLETION OF CONSTRUCTION AND ESTABLISHMENT OF PERMANENT GROUND COVER, CONTRACTOR SHALL REMOVE AND DISPOSE OF EROSION CONTROL MEASURES AND CLEAN SEDIMENT AND DEBRIS FROM ENTIRE DRAINAGE AND SEWER SYSTEMS.</div> <div>6. VEGETATIVE SLOPE STABILIZATION WILL BE IMPLEMENTED WITHIN 14 DAYS AFTER GRADING OR CONSTRUCTION ACTIVITIES HAVE TEMPORARILY OR PERMANENTLY CEASED. VEGETATIVE SLOPE STABILIZATION WILL BE USED TO MINIMIZE EROSION ON SLOPES OF 3:1 OR STEEPER. ESTABLISHMENT OF TEMPORARY AND PERMANENT VEGETATIVE COVER MAY BE ESTABLISHED BY HYDRO-SEEDING OR SODDING. A SUITABLE TOPSOIL, GOOD SEEDBED PREPARATION, AND ADEQUATE LIME, FERTILIZER AND WATER WILL BE PROVIDED FOR EFFECTIVE ESTABLISHMENT OF THESE VEGETATIVE STABILIZATION METHODS. MULCH WILL ALSO BE USED AFTER PERMANENT SEEDING TO PROTECT SOIL FROM THE IMPACT OF FALLING RAIN AND TO INCREASE THE CAPACITY OF THE SOIL TO ABSORB WATER.</div>
<div>Utilities</div> <div>1. THE LOCATIONS, SIZES, AND TYPES OF EXISTING UTILITIES ARE SHOWN AS AN APPROXIMATE REPRESENTATION ONLY. THE OWNER OR IT'S REPRESENTATIVE(S) HAVE NOT INDEPENDENTLY VERIFIED THIS INFORMATION AS SHOWN ON THE PLANS. THE UTILITY INFORMATION SHOWN DOES NOT GUARANTEE THE ACTUAL EXISTENCE, SERVICEABILITY, OR OTHER DATA CONCERNING THE UTILITIES, NOR DOES IT GUARANTEE AGAINST THE POSSIBILITY THAT ADDITIONAL UTILITIES MAY BE PRESENT THAT ARE NOT SHOWN ON THE PLANS. PRIOR TO ORDERING MATERIALS AND BEGINNING CONSTRUCTION, THE CONTRACTOR SHALL VERIFY AND DETERMINE THE EXACT LOCATIONS, SIZES, AND ELEVATIONS OF THE POINTS OF CONNECTIONS TO EXISTING UTILITIES AND, SHALL CONFIRM THAT THERE ARE NO INTERFERENCES WITH EXISTING UTILITIES AND THE PROPOSED UTILITY ROUTES, INCLUDING ROUTES WITHIN THE PUBLIC RIGHTS OF WAY.</div> <div>2. WHERE AN EXISTING UTILITY IS FOUND TO CONFLICT WITH THE PROPOSED WORK, OR EXISTING CONDITIONS DIFFER FROM THOSE SHOWN SUCH THAT THE WORK CANNOT BE COMPLETED AS INTENDED, THE LOCATION, ELEVATION, AND SIZE OF THE UTILITY SHALL BE ACCURATELY DETERMINED WITHOUT DELAY BY THE CONTRACTOR, AND THE INFORMATION FURNISHED IN WRITING TO THE OWNER'S REPRESENTATIVE FOR THE RESOLUTION OF THE CONFLICT AND CONTRACTOR'S FAILURE TO NOTIFY PRIOR TO PERFORMING ADDITIONAL WORK RELEASES OWNER FROM OBLIGATIONS FOR ADDITIONAL PAYMENTS WHICH OTHERWISE MAY BE WARRANTED TO RESOLVE THE CONFLICT.</div> <div>3. THE LOCATION, SIZE, DEPTH, AND SPECIFICATIONS FOR CONSTRUCTION OF PROPOSED PRIVATE UTILITY SERVICES SHALL BE INSTALLED ACCORDING TO THE REQUIREMENTS PROVIDED BY, AND APPROVED BY, THE RESPECTIVE UTILITY COMPANY (GAS, TELEPHONE, ELECTRIC, FIRE ALARM, ETC.). FINAL DESIGN LOADS AND LOCATIONS TO BE COORDINATED WITH OWNER AND ARCHITECT.</div> <div>4. CONTRACTOR SHALL MAKE ARRANGEMENTS FOR AND SHALL BE RESPONSIBLE FOR PAYING FEES FOR POLE RELOCATION AND FOR THE ALTERATION AND ADJUSTMENT OF GAS, ELECTRIC, TELEPHONE, FIRE ALARM, AND ANY OTHER PRIVATE UTILITIES, WHETHER WORK IS PERFORMED BY CONTRACTOR OR BY THE UTILITIES COMPANY.</div> <div>5. CONTRACTOR SHALL COORDINATE WITH ELECTRICAL CONTRACTOR AND SHALL FURNISH EXCAVATION, INSTALLATION, AND BACKFILL OF ELECTRICAL FURNISHED SITework RELATED ITEMS SUCH AS PULL BOXES, CONDUITS, DUCT BANKS, LIGHT POLE BASES, AND CONCRETE PADS. SITE CONTRACTOR SHALL FURNISH CONCRETE ENCASEMENT OF DUCT BANKS IF REQUIRED BY THE UTILITY COMPANY AND AS INDICATED ON THE DRAWINGS.</div>	<div>Existing Conditions Information</div> <div>1. EXISTING CONDITIONS BASE PLAN WAS PREPARED BY NORTHEAST SURVEY CONSULTANTS DATED NOVEMBER 26, 2024.</div> <div>2. ELEVATIONS ARE BASED ON THE NORTH AMERICAN VERTICAL DATUM OF 1988.</div> <div>3. WETLANDS WERE FIELD-DELINEATED BY VHB IN AUGUST 2024 AND SUMMARIZED IN A REPORT DATED DECEMBER 10, 2024.</div> <div>Document Use</div> <div>1. THESE PLANS AND CORRESPONDING CADD DOCUMENTS ARE INSTRUMENTS OF PROFESSIONAL SERVICE, AND SHALL NOT BE USED, IN WHOLE OR IN PART, FOR ANY PURPOSE OTHER THAN FOR WHICH IT WAS CREATED WITHOUT THE EXPRESSED, WRITTEN CONSENT OF VHB. ANY UNAUTHORIZED USE, REUSE, MODIFICATION OR ALTERATION, INCLUDING AUTOMATED CONVERSION OF THIS DOCUMENT SHALL BE AT THE USER'S SOLE RISK WITHOUT LIABILITY OR LEGAL EXPOSURE TO VHB.</div> <div>2. CONTRACTOR SHALL NOT RELY SOLELY ON ELECTRONIC VERSIONS OF PLANS, SPECIFICATIONS, AND DATA FILES THAT ARE OBTAINED FROM THE DESIGNERS, BUT SHALL VERIFY LOCATION OF PROJECT FEATURES IN ACCORDANCE WITH THE PAPER COPIES OF THE PLANS AND SPECIFICATIONS THAT ARE SUPPLIED AS PART OF THE CONTRACT DOCUMENTS.</div> <div>3. SYMBOLS AND LEGENDS OF PROJECT FEATURES ARE GRAPHIC REPRESENTATIONS AND ARE NOT NECESSARILY SCALED TO THEIR ACTUAL DIMENSIONS OR LOCATIONS ON THE DRAWINGS. THE CONTRACTOR SHALL REFER TO THE DETAIL SHEET DIMENSIONS, MANUFACTURERS' LITERATURE, SHOP DRAWINGS AND FIELD MEASUREMENTS OF SUPPLIED PRODUCTS FOR LAYOUT OF THE PROJECT FEATURES.</div>
<div>Layout and Materials</div> <div>1. PROPOSED BOUNDS AND ANY EXISTING PROPERTY LINE MONUMENTATION DISTURBED DURING CONSTRUCTION SHALL BE SET OR RESET BY A PROFESSIONAL LICENSED SURVEYOR.</div> <div>2. PRIOR TO START OF CONSTRUCTION, CONTRACTOR SHALL VERIFY EXISTING PAVEMENT ELEVATIONS AT INTERFACE WITH PROPOSED PAVEMENTS, AND EXISTING GROUND ELEVATIONS ADJACENT TO DRAINAGE OUTLETS TO ASSURE PROPER TRANSITIONS BETWEEN EXISTING AND PROPOSED FACILITIES.</div> <div>3. FINAL LAYOUT SUBJECT TO CONDITIONS ENCOUNTERED IN THE FIELD.</div>	
<div>Demolition</div> <div>1. CONTRACTOR SHALL DISPOSE OF DEMOLITION DEBRIS IN ACCORDANCE WITH APPLICABLE FEDERAL, STATE AND LOCAL REGULATIONS, ORDINANCES AND STATUTES.</div> <div>2. THE DEMOLITION LIMITS DEPICTED IN THE PLANS IS INTENDED TO AID THE CONTRACTOR DURING THE BIDDING AND CONSTRUCTION PROCESS AND IS NOT INTENDED TO DEPICT EACH AND EVERY ELEMENT OF DEMOLITION. THE CONTRACTOR IS RESPONSIBLE FOR IDENTIFYING THE DETAILED SCOPE OF DEMOLITION BEFORE SUBMITTING ITS BID/PROPOSAL TO PERFORM THE WORK AND SHALL MAKE NO CLAIMS AND SEEK NO ADDITIONAL COMPENSATION FOR CHANGED CONDITIONS OR UNFORESEEN OR LATENT SITE CONDITIONS RELATED TO ANY CONDITIONS DISCOVERED DURING EXECUTION OF THE WORK.</div> <div>3. UNLESS OTHERWISE SPECIFICALLY PROVIDED ON THE PLANS OR IN THE SPECIFICATIONS, THE ENGINEER HAS NOT PREPARED DESIGNS FOR AND SHALL HAVE NO RESPONSIBILITY FOR THE PRESENCE, DISCOVERY, REMOVAL, ABATEMENT OR DISPOSAL OF HAZARDOUS MATERIALS, TOXIC WASTES OR POLLUTANTS AT THE PROJECT SITE. THE ENGINEER SHALL NOT BE RESPONSIBLE FOR ANY CLAIMS OF LOSS, DAMAGE, EXPENSE, DELAY, INJURY OR DEATH ARISING FROM THE PRESENCE OF HAZARDOUS MATERIAL, AND CONTRACTOR SHALL INDEMNIFY AND HOLD HARMLESS THE ENGINEER FROM ANY CLAIMS MADE IN CONNECTION THEREWITH. MOREOVER, THE ENGINEER SHALL HAVE NO ADMINISTRATIVE OBLIGATIONS OF ANY TYPE WITH REGARD TO ANY CONTRACTOR AMENDMENT INVOLVING THE ISSUES OF PRESENCE, DISCOVERY, REMOVAL, ABATEMENT OR DISPOSAL OF ASBESTOS OR OTHER HAZARDOUS MATERIALS.</div>	

## GCE Artillery Road Solar

Artillery Road  
Woodbury, CT

No.	Revision	Date	Approved

Designed by TMD      Checked by SJK

## Permitting

June 30, 2025

Not Issued for Construction

## Legend & General Notes

Drawing Number

# C1.00

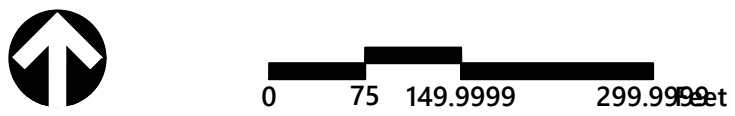
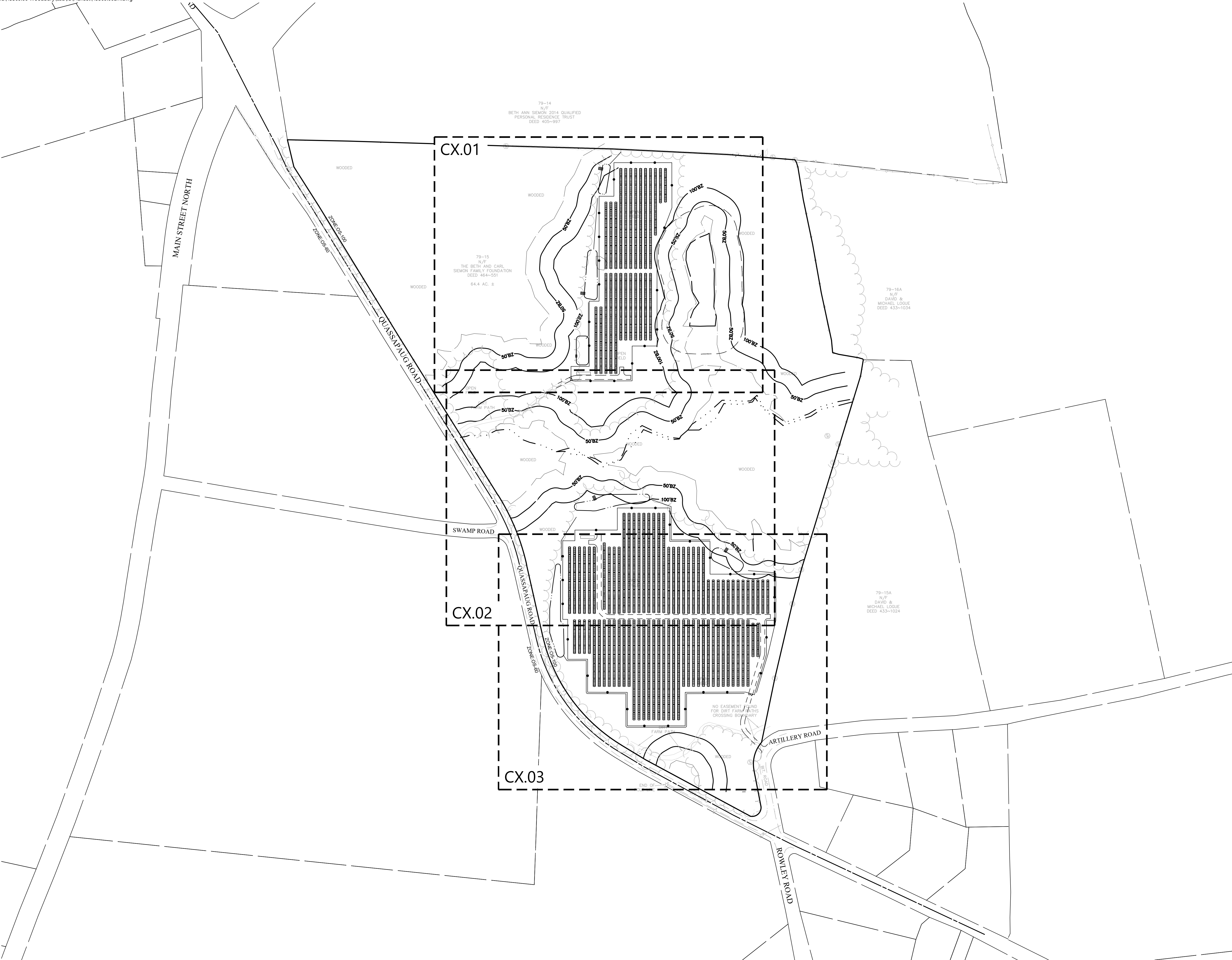
Sheet 1 of 13

Project Number

43509.00



100 Great Meadow Road  
Suite 200  
Wethersfield, CT 06109  
860.807.4300



GCE Artillery Road Solar  
Artillery Road  
Woodbury, CT

No.	Revision	Date	Appvd.

Designed by	Checked by
TMD	SJK
Issued for	Date
Permitting	June 30, 2025

Not Issued for Construction

Drawing Title

Overall Site Plan

Drawing Number

C2.00

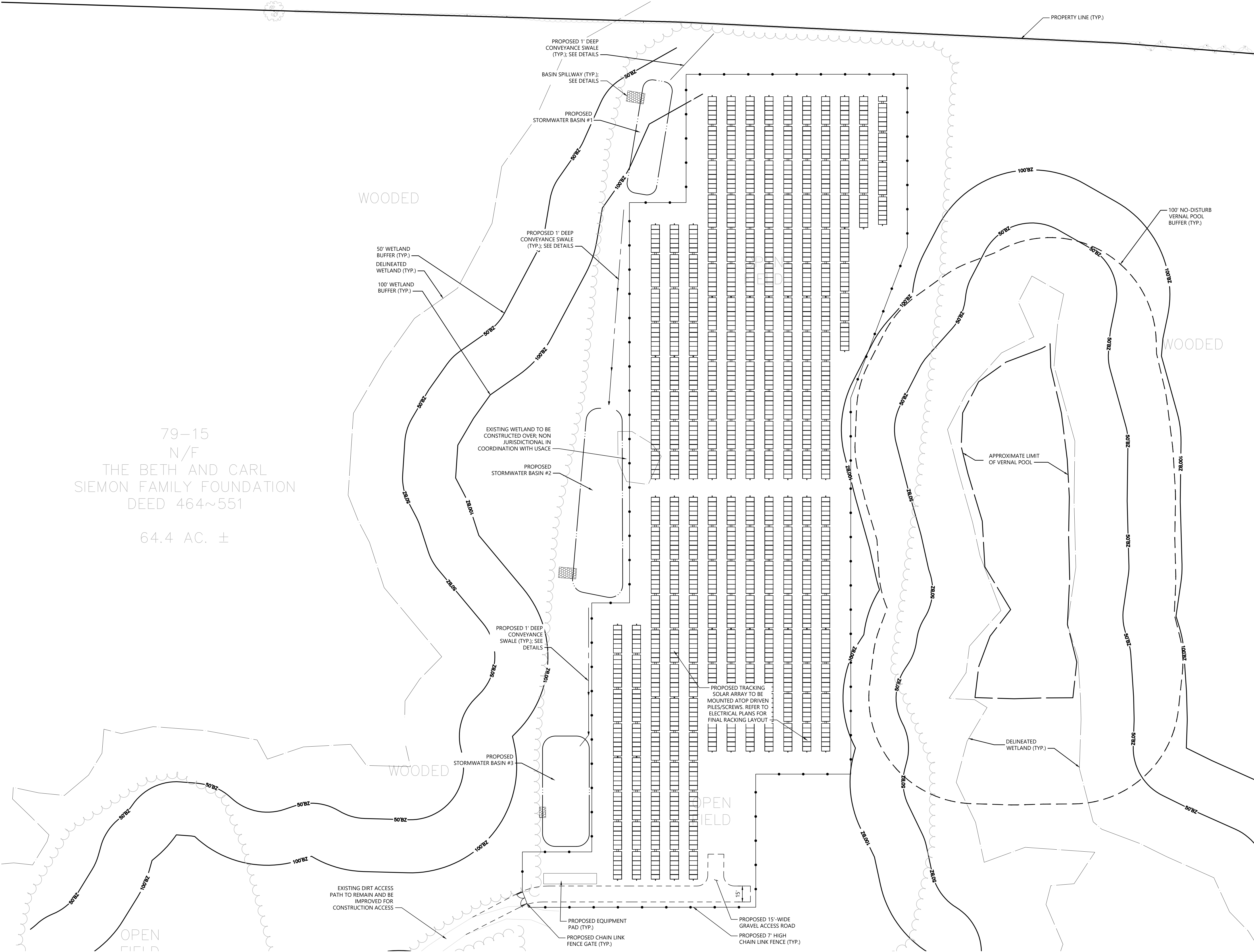
Sheet 2 of 13

Project Number  
43509.00

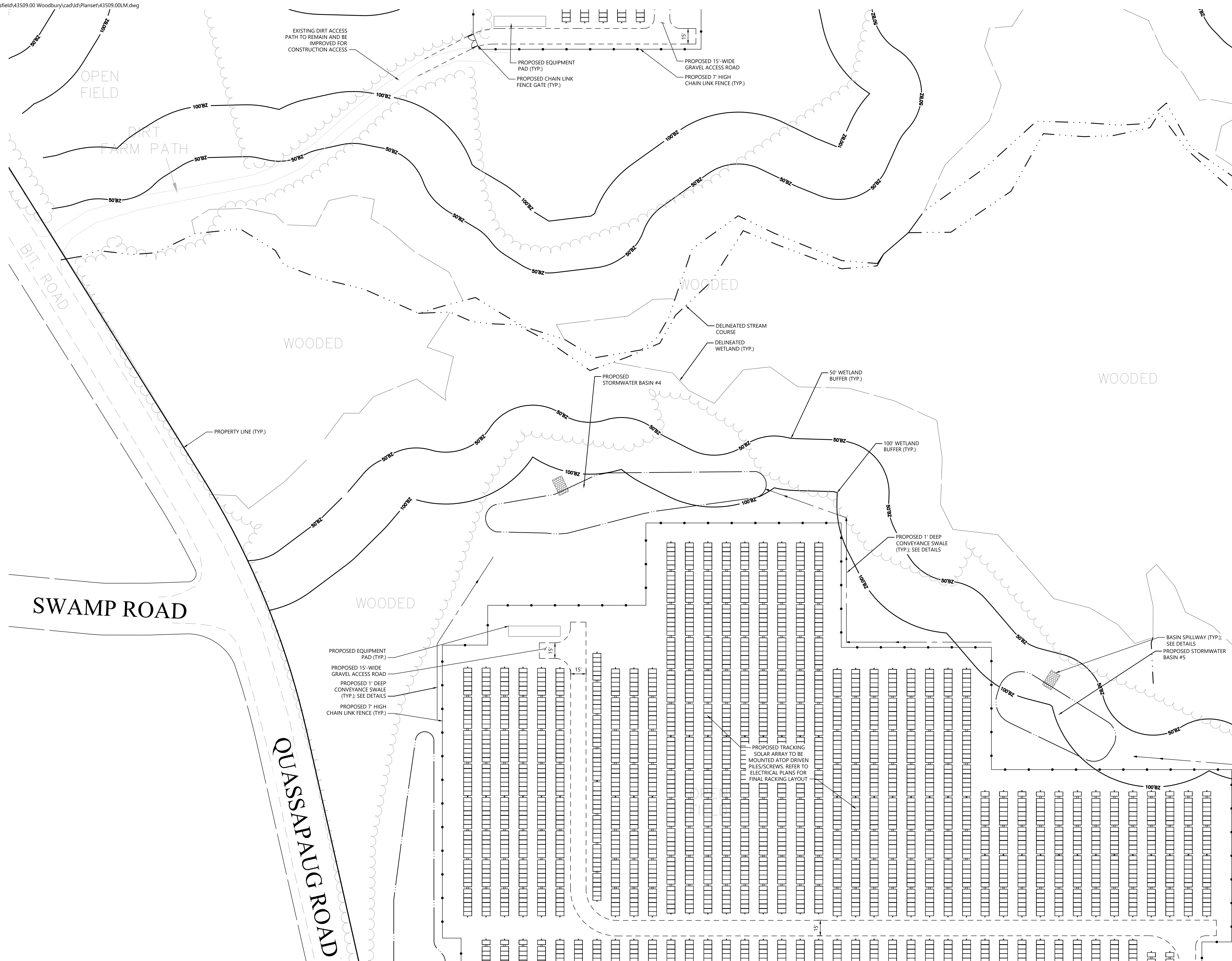




100 Great Meadow Road  
Suite 200  
Wethersfield, CT 06109  
860.807.4300



100 Great Meadow Road  
Suite 200  
Wethersfield, CT 06109  
860.807.4300



## GCE Artillery Road Solar

Artillery Road  
Woodbury, CT

No.	Revision	Date	Appvd.

Designed by **TMD** Checked by **SJK**

Issued for	Date
Permitting	June 30, 2025

Not Issued for Construction

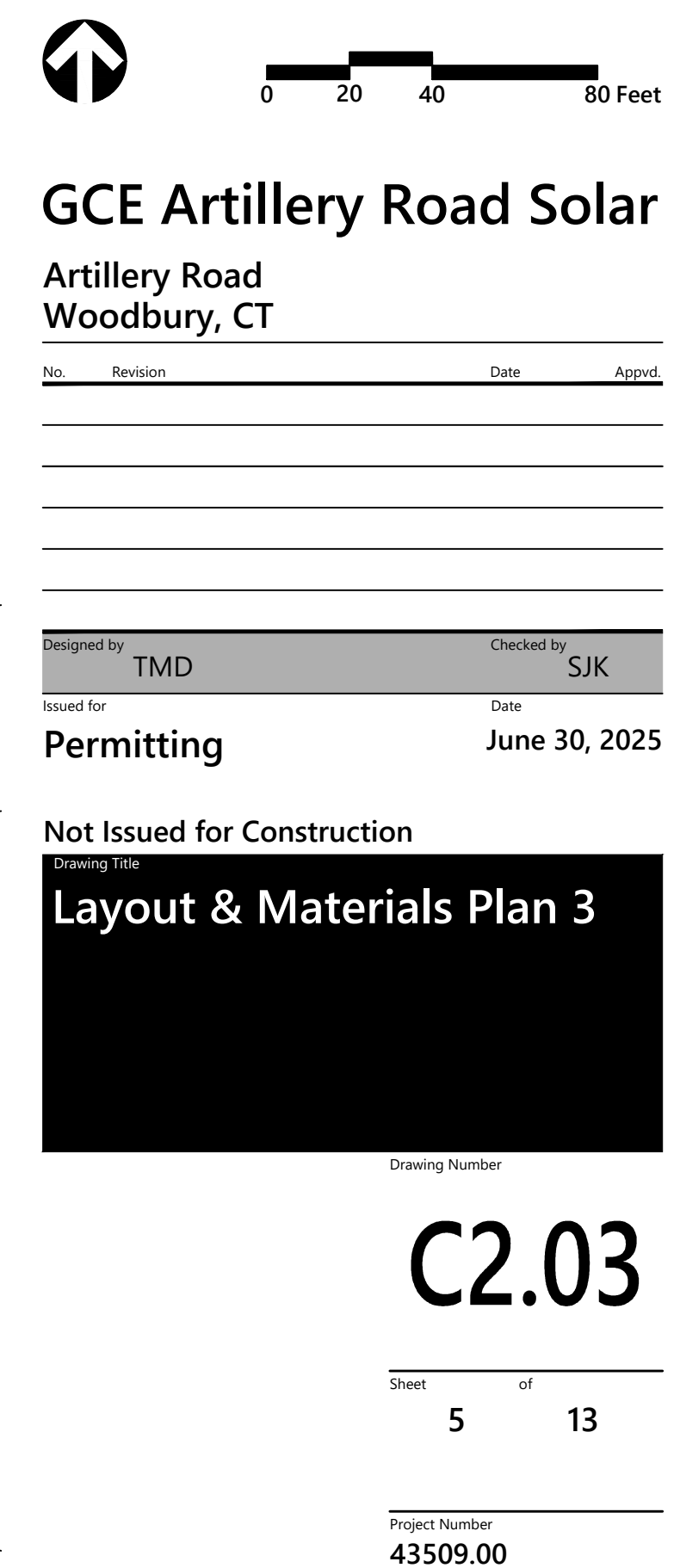
## Layout & Materials Plan 2

Drawing Number

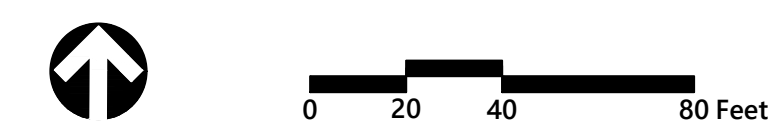
## C2.02

Sheet 4 of 13

Project Number  
**43509.00**







Artillery Road  
Woodbury, CT

Designed by	TMD	Checked by	SJK
-------------	-----	------------	-----

Not Issued for Construction

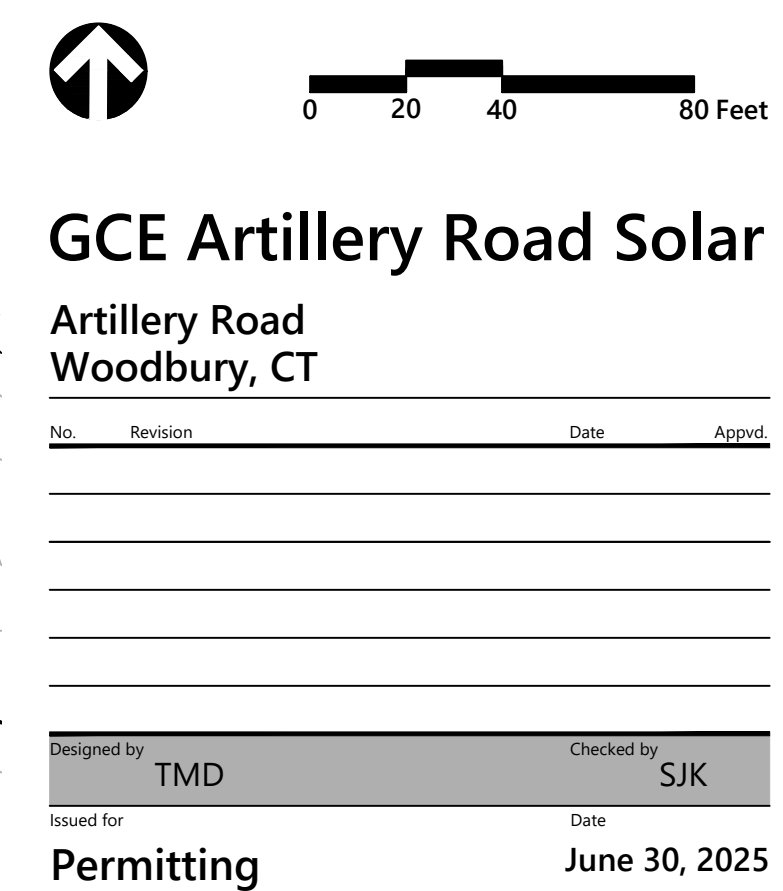
Drawing Number

Sheet 6 of 13

---

Project Number  
**43509.00**









100 Great Meadow Road  
Suite 200  
Wethersfield, CT 06109  
860.807.4300

Saved Monday, June 30, 2025 3:31:40 PM HIALBERT Plotted Monday, July 14, 2025 1:31:49 AM Henry Jalbert

PROPOSED 1" DEEP  
CONVEYANCE SWALE  
(TYP.); SEE DETAILS

PROPOSED STORMWATER  
BASIN #6  
BOTTOM EL. = 546'  
BOTTOM LENGTH = 265'  
BOTTOM WIDTH = 16' (MIDDLE)  
SIDE SLOPES = 3H:1V  
SPILLWAY CREST = 549'

PROPOSED STORMWATER  
BASIN #5  
BOTTOM EL. = 566'  
BOTTOM LENGTH = 100'  
BOTTOM WIDTH = 23' (MIDDLE)  
SIDE SLOPES = 3H:1V  
SPILLWAY CREST = 569'

1" DEEP  
CONVEYANCE SWALE

1" DEEP CONVEYANCE  
SWALE; SEE DETAIL

NO EASEMENT FOUND  
FOR DIRT FARM PATHS  
CROSSING BOUNDARY

100' WETLAND  
BUFFER (TYP.)  
DELINEATED  
WETLAND (TYP.)  
50' WETLAND  
BUFFER (TYP.)



0 20 40 80 Feet

## GCE Artillery Road Solar

### Artillery Road Woodbury, CT

No.	Revision	Date	Appr'd.

Designed by TMD Checked by SJK

Issued for Permitting Date June 30, 2025

Not Issued for Construction  
Drawing Title  
Grading, Drainage  
& Utility Plan 3

Drawing Number

C3.03

Sheet 8 of 13

Project Number  
43509.00



## CONSTRUCTION SEQUENCING

- CONSTRUCTION SCHEDULE CAN VARY BASED ON THE AVAILABILITY OF MATERIALS AND PERMIT APPROVAL SCHEDULE. THE GENERAL CONSTRUCTION SEQUENCING NOTES ARE AS FOLLOWS:
1. THE SITE CONTRACTOR SHALL BE FULLY RESPONSIBLE TO CONTROL CONSTRUCTION SUCH THAT SEDIMENTATION SHALL NOT AFFECT ROADS/HIGHWAYS AND THEIR DRAINAGE SYSTEM, NEIGHBORING PROPERTIES, WETLANDS AND REGULATORY PROTECTED AREAS. WHETHER SUCH SEDIMENTATION IS CAUSED BY WATER, WIND, OR DIRECT DEPOSIT. DESIGNATED ACCESS DRIVES MUST BE USED TO THE MAXIMUM EXTENTS POSSIBLE. IT IS REQUIRED THAT THE SITE CONTRACTOR PERFORM A DAILY INSPECTION OF ALL EROSION AND SEDIMENT CONTROL MEASURES EMPLOYED AT THE SITE.
  2. A CTDEEP-APPROVED QUALIFIED INSPECTOR SHALL BE ASSIGNED TO BE RESPONSIBLE FOR PERFORMING INSPECTIONS AND PREPARING REPORTS IN ACCORDANCE WITH SECTION 53(4)(B) OF THE CONSTRUCTION GENERAL PERMIT. THESE INSPECTIONS SHALL TAKE PLACE WEEKLY, AT A MINIMUM, AND SHALL BE REQUIRED WITHIN 24 HOURS OF A RAINFALL EVENT EXCEEDING 0.5 INCHES. THE ENGINEER OF RECORD SHALL BE REQUIRED TO REVIEW AND COUNTER-SIGN THE PREPARED WEEKLY REPORTS. IT IS ALSO ANTICIPATED THAT REPRESENTATIVES FROM CTDEEP AND/OR THE STATE CONSERVATION DISTRICT WILL PERFORM PERIODIC INSPECTIONS.
  3. ENGINEER OF RECORD WILL PERFORM MONTHLY PLAN IMPLEMENTATION INSPECTIONS AND PREPARE REPORTS OF THE FINDINGS. THESE INSPECTIONS SHALL LAST A MINIMUM OF THREE (3) MONTHS OR UNTIL THE COMPLETION AND STABILIZATION OF ALL EROSION CONTROL MEASURES AT THE SITE.
  4. THROUGHOUT THE COURSE OF THE CONSTRUCTION PROJECT, ADDITIONAL SEDIMENT AND EROSION CONTROL MEASURES MAY BE WARRANTED AT THE DISCRETION OF THE QUALIFIED INSPECTOR AND/OR DESIGN ENGINEER. THESE IMPROVEMENTS MUST BE IMPLEMENTED IN A TIMELY FASHION IN ACCORDANCE WITH THE REQUIREMENTS OF THE CONSTRUCTION GENERAL PERMIT. ADDITIONALLY, AREAS OF PROPOSED COMPACTED NATIVE SOIL ROADS SHALL BE CONVERTED TO STABLE GRAVEL ROADS IF/AS DETERMINED BY THE QUALIFIED INSPECTOR OR ENGINEER OF RECORD.
  5. PRIOR TO CONSTRUCTION, THE APPLICANT SHALL PROVIDE THE TOWN OF WOODBURY WITH THE NAME OF CONTACT AND 24-HOUR CONTACT INFORMATION.
  6. CONTRACTOR SHALL ADHERE TO 2024 CONNECTICUT GUIDELINES FOR EROSION AND SEDIMENT CONTROL, AS AMENDED.
  7. THE CONTRACTOR SHALL HOLD PRE-CONSTRUCTION MEETING(S). ATTENDEES SHALL INCLUDE, BUT NOT BE LIMITED TO, DEVELOPER, REPRESENTATIVES OF THE GENERAL CONTRACTOR, SITE CONTRACTOR, CTDEEP, TOWN OF WOODBURY, ENGINEER OF RECORD, AND QUALIFIED SWPPP INSPECTOR.
  8. THE PERMITEE/OWNER SHALL BE RESPONSIBLE FOR PROVIDING A KNOX BOX FOR THE BENEFIT OF EMERGENCY RESPONDERS UPON COMPLETION OF CONSTRUCTION AS WELL AS CONDUCTING AN ON-SITE TRAINING SESSION FOR EMERGENCY RESPONDERS PERTINENT TO THE FACILITY.
  9. THE CONTRACTOR SHALL CONTACT CALL-BEFORE-YOU-DIG (1-800-922-4455) PRIOR TO ENGAGING IN ANY EXCAVATION ACTIVITIES AT THE SITE.
  10. THE CONTRACTOR SHALL NOTIFY THE TOWN OF WOODBURY AGENT, ZONING ENFORCEMENT OFFICER, AND ENGINEERING DEPARTMENT, 48 HOURS PRIOR TO COMMENCEMENT OF ANY CONSTRUCTION ACTIVITY.
  11. NO CONSTRUCTION OF SITE IMPROVEMENTS MAY BEGIN UNTIL THE PROPER EROSION CONTROL MEASURES SERVING THE AREA TO BE DISTURBED ARE IN PLACE.
  12. ANTICIPATED WORK HOURS WILL BE BETWEEN 7:00 AM AND 5:00 PM MONDAY THROUGH FRIDAY. SATURDAY WORK CAN BE PERFORMED WITH NOTIFICATION TO THE CONNECTICUT SITING COUNCIL.
  13. ANY DEWATERING BY PUMP SHALL INCLUDE AN INTAKE AND/OR DISCHARGE FILTRATION SYSTEM (I.E. DIRTBAG SYSTEM) AND BE PUMPED TO STABLE GROUND. CONTRACTOR TO ENSURE DISCHARGED WATER IS RUNNING CLEAN OR ALTERIOR METHODS MUST BE EMPLOYED.

### PRE-CONSTRUCTION SITE PROTECTION SEQUENCE

1. IT IS ANTICIPATED THAT THE SITE WILL BE DELIVERED TO THE CONSTRUCTION TEAM FULLY VEGETATED.
2. ACCESS ROADS SHALL BE DESIGNATED AS EARLY AS FEASIBLE AND USED PRIMARILY FOR CONSTRUCTION TRAFFIC.
3. INSTALL EROSION AND SEDIMENT CONTROLS FOLLOWING THE CT GUIDELINES AND MANUFACTURER'S DIRECTIONS. DURING CONSTRUCTION, THE CONTRACTOR SHALL INSTALL MEASURES AS REQUIRED BY THE ENGINEER OF RECORD OR QUALIFIED INSPECTOR, TO PREVENT SEDIMENT-LOADED RUNOFF FROM REACHING WETLANDS OR DISCHARGING OFF-SITE.
4. INSTALL TEMPORARY SEDIMENT TRAPS AND CONVEYANCE SWALES IN ACCORDANCE WITH THE APPROVED SITE-SPECIFIC SWPCP AND CT GUIDELINES. THE ENGINEER OF RECORD SHALL INSPECT FEATURES TO CONFIRM REQUIRED STORAGE CAPACITIES ARE PROVIDED AND THAT OUTLETS AND/OR SPILLWAYS ARE CONSTRUCTED CORRECTLY. DISCHARGE AREAS BELOW OUTFALLS MUST BE INSPECTED TO CONFIRM FLOW WILL BE OVER STABLE GROUND AND SHEET FLOW IS ENCOURAGED. IF DISTURBED SOILS ARE PRESENT, THE ENGINEER OF RECORD TO PROVIDE CORRECT MEASURES TO ADDRESS CONDITION.
5. SEED AND PROTECT DISTURBED SOILS AROUND SEDIMENT TRAPS WITHIN 14 DAYS OF COMPLETION. SECURE SEED WITH BIODEGRADABLE EROSION CONTROL MATTING.

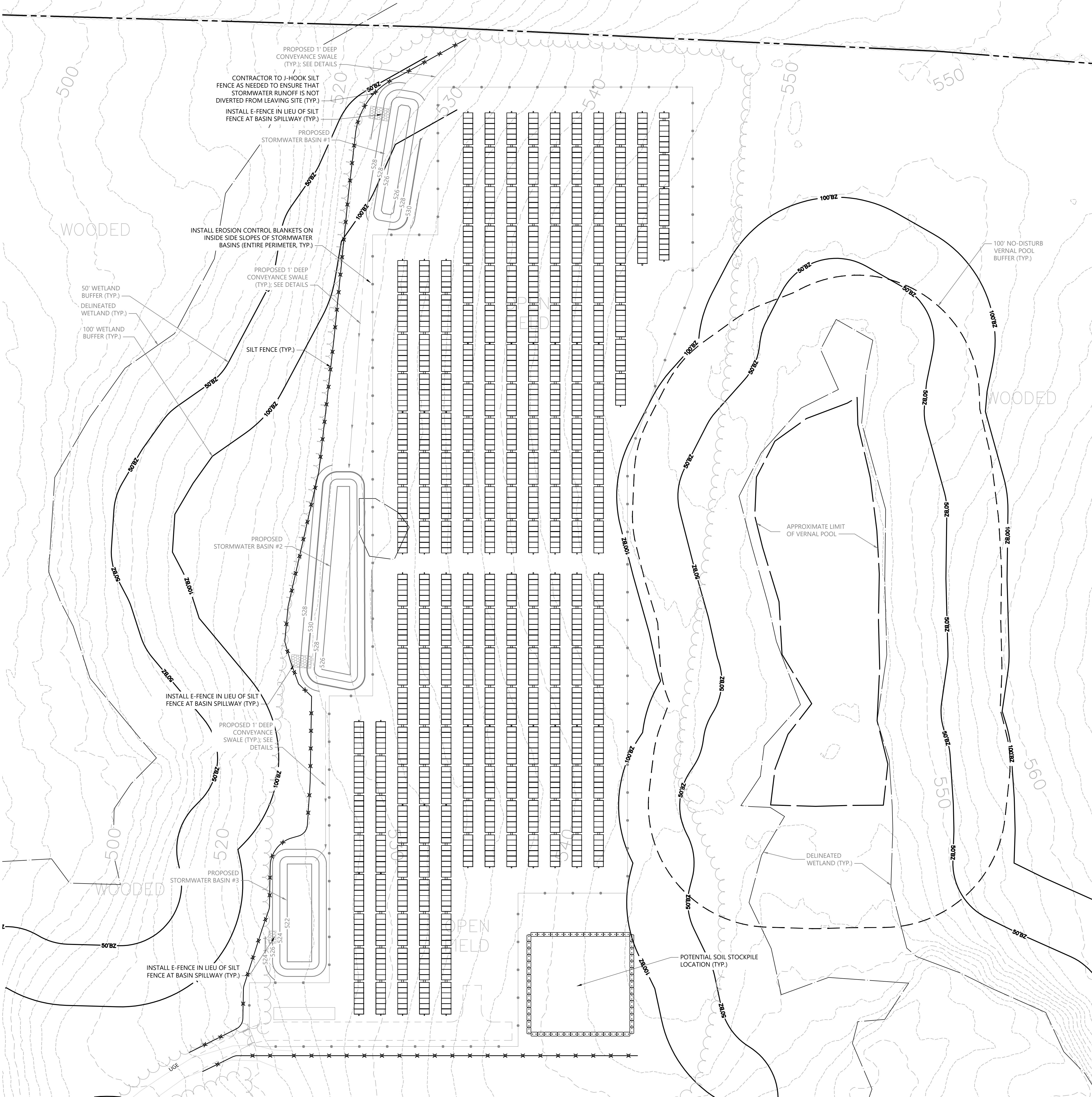
### CONSTRUCTION SEQUENCE

1. CLEAR AND GRUB AREAS TO LIMITS PRESCRIBED ON THE PLANS.
2. TOPSOIL SHALL BE REPLACED OVER REGRADED AREAS UPON COMPLETION OF MASS EARTHWORK ACTIVITIES AND AREAS WHICH WERE DISTURBED BY MASS EARTHWORK OPERATIONS SHALL BE RESEED WITHIN 14 DAYS OF COMPLETION.
3. THROUGHOUT CONSTRUCTION, THE CONTRACTOR SHALL ADDRESS ONGOING EROSION PROBLEMS USING TEMPORARY DIVERSIONS AND FILLING AND GRADING GULLIES. TRACK GULLIES UP AND DOWN SLOPE. A STAPLED BIODEGRADABLE EROSION CONTROL BLANKET WITHOUT MONOFILAMENT MESH IS AN ACCEPTABLE ALTERNATIVE FOR HYDROSEED AND BFM. UPON COMPLETION OF THIS CONSTRUCTION PHASE, ALL DISTURBED AREAS SHALL BE SEEDD AND STABILIZED WITH BIODEGRADABLE EROSION CONTROL MATTING PRIOR TO CONTINUING CONSTRUCTION SEQUENCE.
5. INSTALL PILES AND/OR GROUND SCREWS FOR SOLAR PANEL RACKING.
6. INSTALL ELECTRICAL CONDUIT AS REQUIRED BY THE ELECTRICAL DESIGN PLANS.
7. THE INSTALLATION OF RACKING SHALL FOLLOW THE FOUNDATION INSTALLATION BY ROUGHLY ONE WEEK STARTING FROM THE SAME POINT.
8. RESEED AND REGRADE ALL AREAS DISTURBED BY CONSTRUCTION TRAFFIC WITHIN THE ARRAYS WHERE RACKS ARE INSTALLED AS EARLY AS POSSIBLE. RUTS AND RILLS SHALL BE SMOOTHED AND GRADED AS DISCOVERED.
9. INSTALL SOLAR PANEL MODULES IN THE RACKING. MUCH OF THIS WORK IS ANTICIPATED TO BE PERFORMED BY HAND AND LIGHT CONSTRUCTION EQUIPMENT WHICH WILL CAUSE MINIMAL DISTURBANCE COMPARED TO THE USE OF HEAVY EQUIPMENT. DESIGNATED ACCESS ROADS SHALL STILL BE USED TO THE MAXIMUM EXTENTS POSSIBLE.
10. UPON COMPLETION OF CONSTRUCTION, RE-SEED ALL DISTURBED AREAS WITHIN 14 DAYS AND PREVENT VEHICULAR TRAFFICKING OVER THESE AREAS. INSTALL FINAL LANDSCAPING.
11. AFTER SITE IS STABILIZED, AND AFTER INSPECTION BY DESIGN ENGINEER AND/OR CTDEEP REPRESENTATIVE, REMOVE TEMPORARY EROSION AND SEDIMENT CONTROLS INCLUDING SEDIMENT TRAPS AND DIVERSION SWALES. ENTIRE SITE SHALL BE CHECKED FOR AND CLEANED OF SEDIMENT AS NEEDED.

## WILDLIFE PROTECTION

CONTRACTOR SHALL BE AWARE THAT EASTERN BOX TURTLES MAY BE PRESENT ON SITE. ALL WORK CAN BE PERFORMED BETWEEN APRIL 1 AND OCTOBER 31 DURING THE ACTIVE SEASON OF THE SPECIES. IN THE EVENT THAT WORK OUTSIDE OF THESE LIMITS IS REQUIRED, THE CONTRACTOR SHALL TAKE THE FOLLOWING PRECAUTIONS:

1. EXCLUSIONARY PRACTICES WILL BE USED TO PREVENT ANY TURTLE ACCESS INTO DISTURBANCE AREAS. THESE MEASURES WILL NEED TO BE INSTALLED AT THE LIMITS OF DISTURBANCE AS SHOWN ON THE PLANS, OR SPECIFICALLY DESIGNATED BY A HERPETOLOGIST WHO CAN ASSESS THE CONDITIONS AT YOUR SITE.
2. EXCLUSIONARY FENCING BE AT LEAST 20 INCHES TALL AND MUST BE SECURED TO AND REMAIN IN CONTACT WITH THE GROUND AND BE REGULARLY MAINTAINED (AT LEAST BI-WEEKLY AND AFTER MAJOR WEATHER EVENTS) TO SECURE ANY GAPS OR OPENINGS AT GROUND LEVEL THAT MAY LET ANIMAL PASS THROUGH.
3. ALL STAGING AND STORAGE AREAS, OUTSIDE OF PREVIOUSLY PAVED LOCATIONS, REGARDLESS OF THE DURATION OF TIME THEY WILL BE UTILIZED, MUST BE REVIEWED TO REMOVE INDIVIDUALS AND EXCLUDE THEM FROM RE-ENTRY.
4. ALL CONSTRUCTION PERSONNEL WORKING WITHIN THE TURTLE HABITAT MUST BE APPRISED OF THE SPECIES DESCRIPTION AND THE POSSIBLE PRESENCE OF A LISTED SPECIES.
5. THE CONTRACTOR SHALL SEARCH THE WORK AREA EACH MORNING PRIOR TO ANY WORK BEING DONE.
6. ANY TURTLES ENCOUNTERED WITHIN THE IMMEDIATE WORK AREA SHALL BE CAREFULLY MOVED TO ADJACENT AREA OUTSIDE OF THE EXCLUDED AREA AND FENCING SHOULD BE INSPECTED TO IDENTIFY AND REMOVE ACCESS POINT. THIS ANIMAL IS PROTECTED BY LAW AND SHOULD NOT BE RELOCATED OFF-SITE.
7. IN AREAS WHERE SILT FENCE IS USED FOR EXCLUSION, IT SHALL BE REMOVED AS SOON AS THE AREA IS STABLE AND DISTURBANCE IS FINISHED TO ALLOW FOR REPTILE AND AMPHIBIAN PASSAGE TO RESUME.



100 Great Meadow Road  
Suite 200  
Wethersfield, CT 06109  
860.807.4300



0 20 40 80 Feet

## GCE Artillery Road Solar

Artillery Road  
Woodbury, CT

No.	Revision	Date	Appr.

Designed by TMD	Checked by SJK
--------------------	-------------------

Issued for  
Permitting

Date  
June 30, 2025

Not Issued for Construction

Drawing Title  
**Erosion & Sediment  
Control Plan 1**

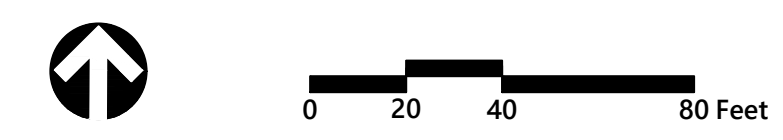
Drawing Number

# C4.01

Sheet  
9 of  
13

Project Number  
43509.00





## GCE Artillery Road Solar

Artillery Road  
Woodbury, CT

No.	Revision	Date	Appr'd.

Designed by TMD      Checked by SJK

Issued for  
**Permitting**

Date  
June 30, 2025

Not Issued for Construction

Drawing Title

**Erosion & Sediment  
Control Plan 2**

Drawing Number

**C4.02**





100 Great Meadow Road  
Suite 200  
Wethersfield, CT 06109  
860.807.4300

INSTALL EROSION CONTROL BLANKETS ON  
INSIDE SIDE SLOPES OF STORMWATER  
BASINS (ENTIRE PERIMETER, TYP.)

PROPOSED 1' DEEP  
CONVEYANCE SWALE  
(TYP.); SEE DETAILS

INSTALL E-FENCE IN LIEU OF SILT  
FENCE AT BASIN SPILLWAY (TYP.)

PROPOSED STORMWATER  
BASIN #5

PROPOSED STORMWATER  
BASIN #6

CONTRACTOR TO J-HOOK SILT  
FENCE AS NEEDED TO ENSURE THAT  
STORMWATER RUNOFF IS NOT  
DIVERTED FROM LEAVING SITE (TYP.)

1'-DEEP CONVEYANCE  
SWALE; SEE DETAIL

1'-DEEP  
CONVEYANCE SWALE

NO EASEMENT FOUND  
FOR DIRT FARM PATHS  
CROSSING BOUNDARY

DIRT  
FARM PATH

100' WETLAND  
BUFFER (TYP.)  
DELINEATED  
WETLAND (TYP.)  
50' WETLAND  
BUFFER (TYP.)

STABILIZED  
CONSTRUCTION  
EXIT (TYP.)

B.T. ROAD



0 20 40 80 Feet

## GCE Artillery Road Solar

Artillery Road  
Woodbury, CT

No.	Revision	Date	Appr'd.
-----	----------	------	---------


Designed by	TMD	Checked by	SJK
-------------	-----	------------	-----

Issued for		Date	
------------	--	------	--

Permitting

June 30, 2025

Not Issued for Construction

Erosion & Sediment  
Control Plan 3

Drawing Number

# C4.03

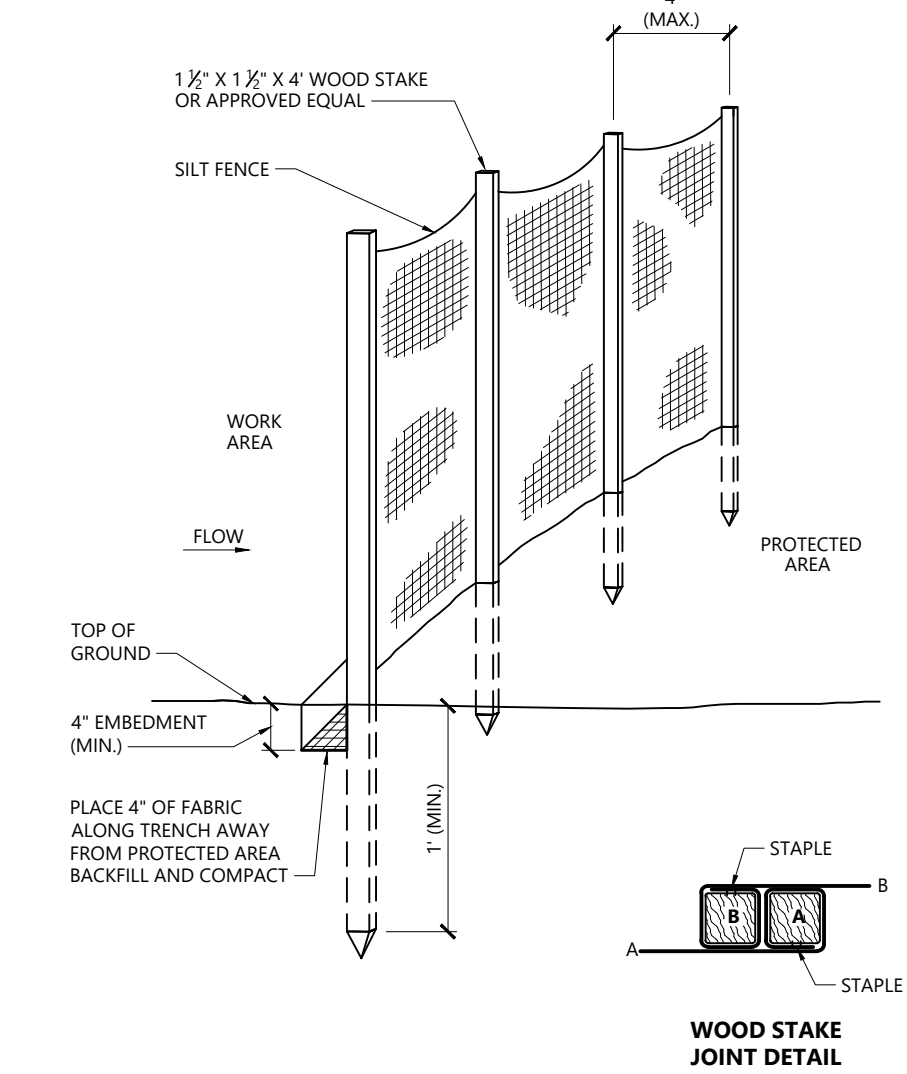
Sheet 11 of 13

Project Number  
43509.00



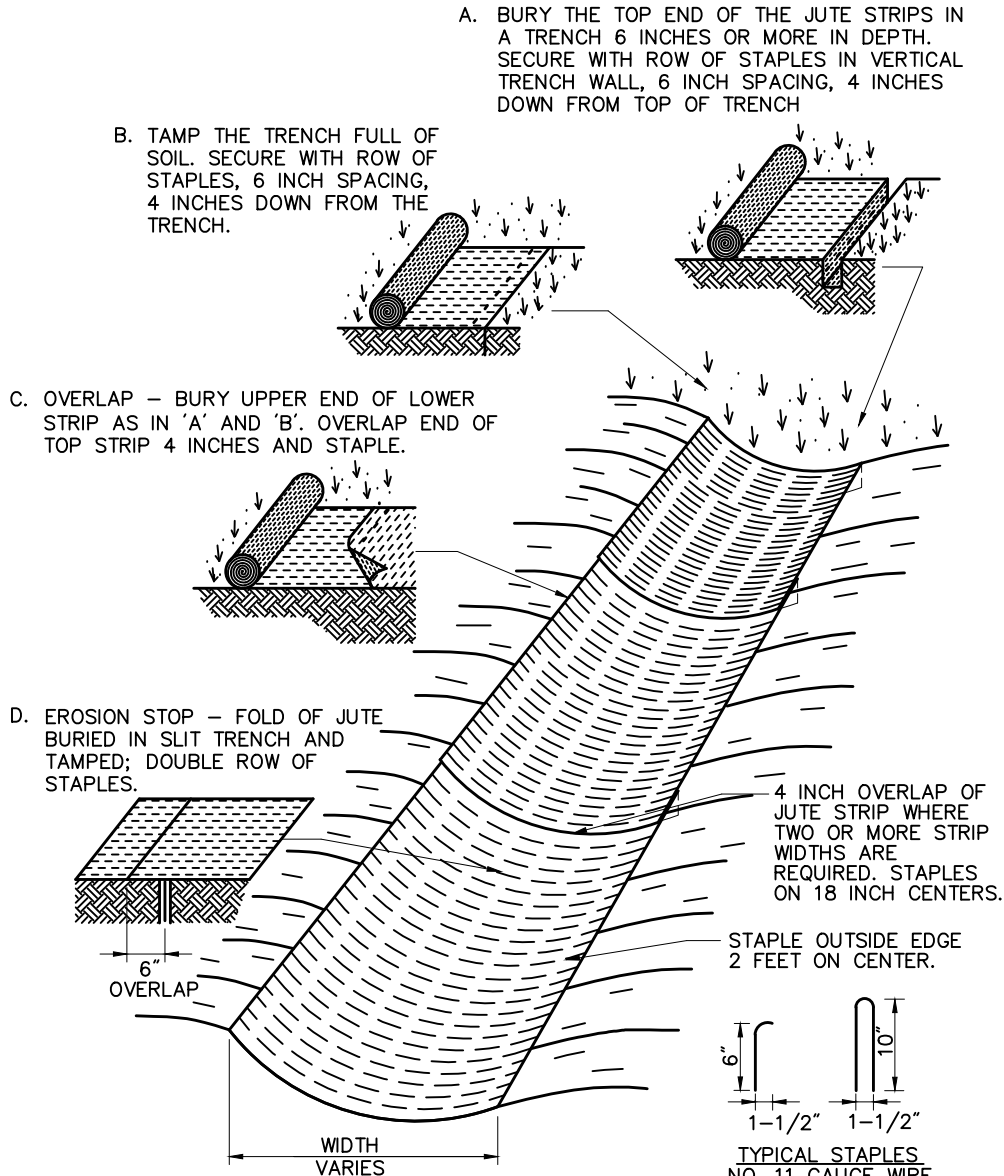






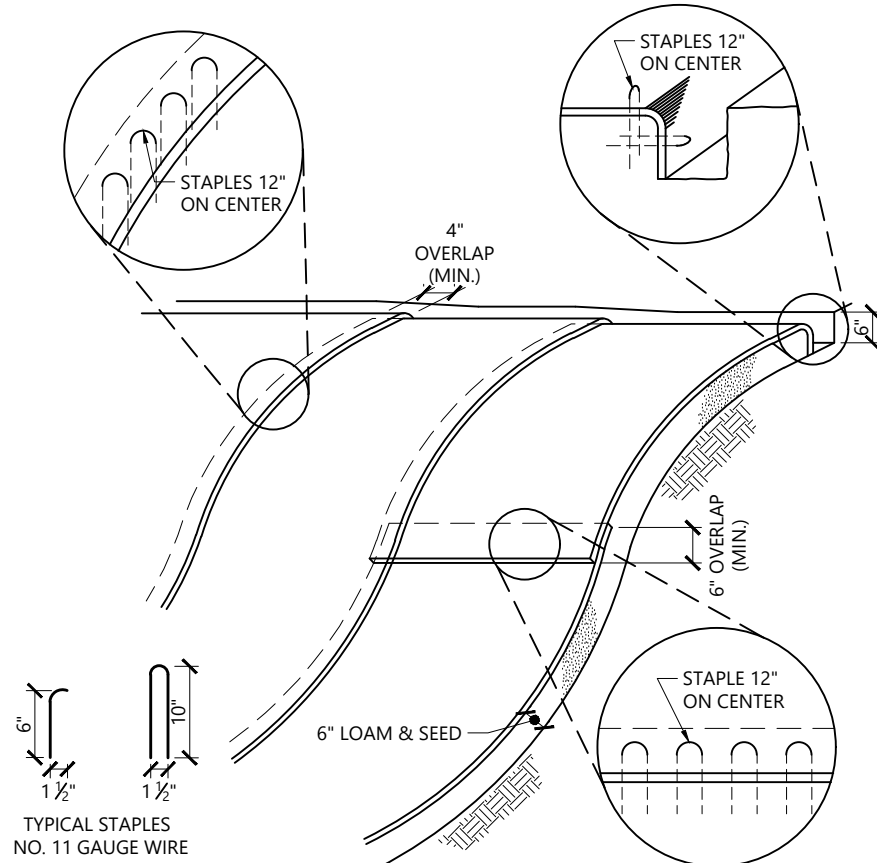
Silt Fence Barrier

N.T.S. Source: VHB 1/16 LD\_650



Erosion Control Blanket (ECB) Swale Installation

N.T.S. Source: VHB 6/98 LD\_681

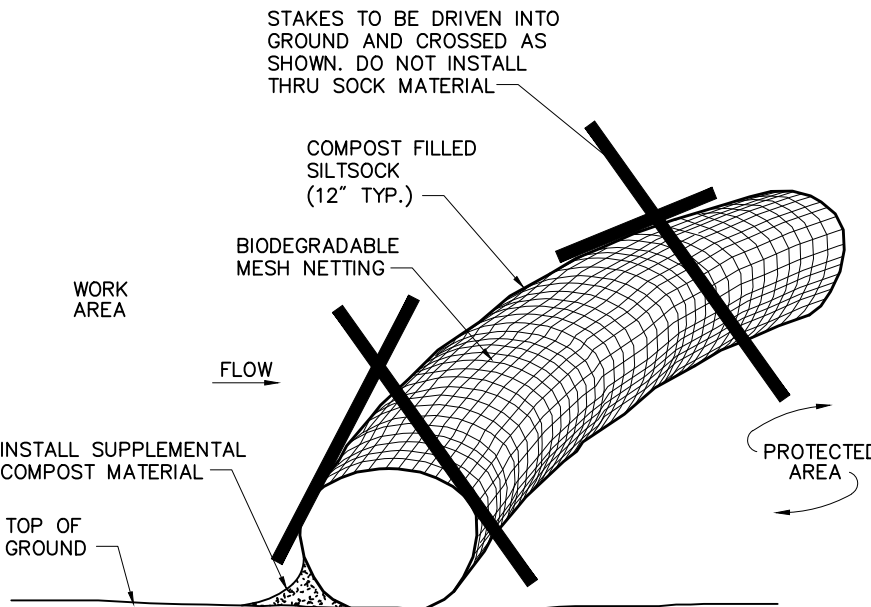


NOTES

- BEGIN AT THE TOP OF BLANKET INSTALLATION AREA BY ANCHORING BLANKET IN A 6" DEEP TRENCH BACKFILL AND COMPACT TRENCH AFTER STAPLING.
- ROLL THE BLANKET DOWN THE SWALE IN THE DIRECTION OF THE WATER FLOW.
- THE EDGES OF BLANKETS MUST BE STAPLED WITH APPROX. 4 INCH OVERLAP WHERE 2 OR MORE STRIP WIDTHS ARE REQUIRED.
- WHEN BLANKETS MUST BE SPLICED DOWN THE SWALE, PLACE UPPER BLANKET END OVER LOWER END WITH 6 INCH (MIN.) OVERLAP AND STAPLE BOTH TOGETHER.
- METHOD OF INSTALLATION SHALL BE AS PER MANUFACTURER'S RECOMMENDATIONS.
- EROSION CONTROL BLANKETS SHALL BE USED IN ALL AREAS WHERE SLOPES EXCEED 3:1.

Erosion Control Blanket Slope Installation

N.T.S. Source: VHB REV 1/16 LD\_680

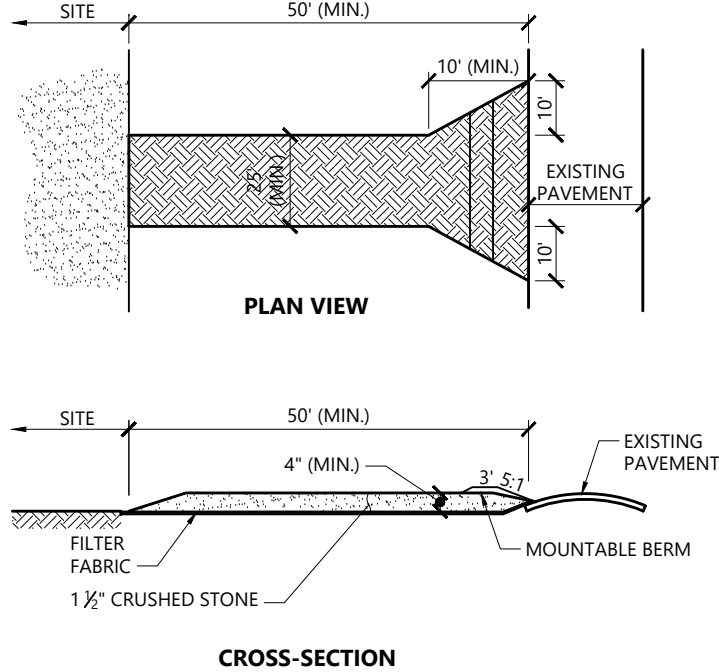


Notes:

- SILT SOCK SHALL BE 12" DIAMETER FILTREXX SILT SOCK, OR APPROVED EQUAL.
- SILT SOCKS SHALL OVERLAP A MINIMUM OF 12 INCHES.
- SILT SOCK SHALL BE INSPECTED PERIODICALLY AND AFTER ALL STORM EVENTS, AND REPAIR OR REPLACEMENT SHALL BE PERFORMED PROMPTLY AS NEEDED.
- COMPOST MATERIAL SHALL BE DISPERSED ON SITE, AS DETERMINED BY THE ENGINEER.
- IF NON BIODEGRADABLE NETTING IS USED THE NETTING SHALL BE COLLECTED AND DISPOSED OF OFFSITE.

Compost Filter Sock (CFS)

N.T.S. Source: VHB 8/12 LD\_658

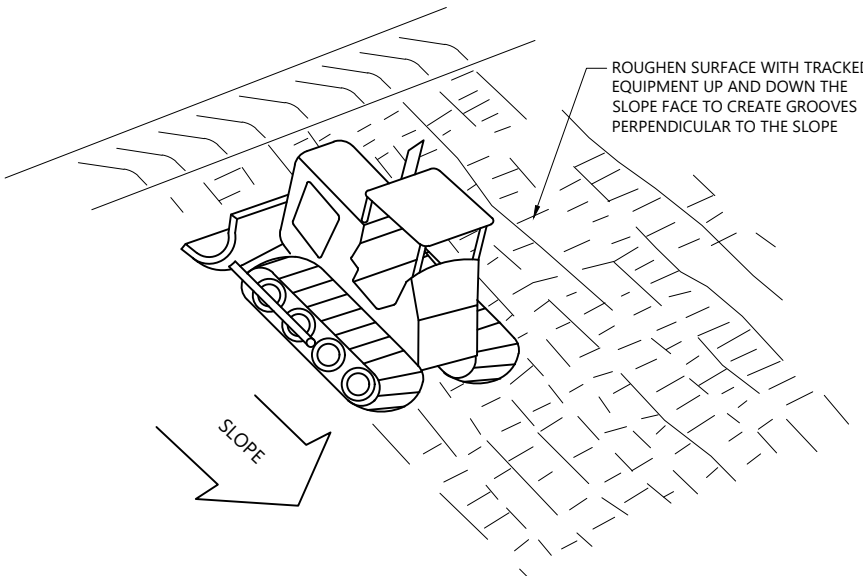


NOTES

- EXIT WIDTH SHALL BE A TWENTY-FIVE (25) FOOT MINIMUM, BUT NOT LESS THAN THE FULL WIDTH AT POINTS WHERE INGRESS OR EGRESS OCCURS.
- THE EXIT SHALL BE MAINTAINED IN A CONDITION WHICH SHALL PREVENT TRACKING OR FLOWING OF SEDIMENT ONTO PUBLIC RIGHTS-OF-WAY. THIS MAY REQUIRE PERIODIC TOP DRESSING WITH ADDITIONAL STONE AS CONDITIONS DEMAND AND REPAIR OR CLEANOUT OF ANY MEASURES USED TO TRAP SEDIMENT. ALL SEDIMENT SPILLED, DROPPED, WASHED OR TRACKED ONTO PUBLIC RIGHTS-OF-WAY MUST BE REMOVED IMMEDIATELY. BERM SHALL BE PERMITTED. PERIODIC INSPECTION AND MAINTENANCE SHALL BE PROVIDED AS NEEDED.
- STABILIZED CONSTRUCTION EXIT SHALL BE REMOVED PRIOR TO FINAL FINISH MATERIALS BEING INSTALLED.

Stabilized Construction Exit

N.T.S. Source: VHB 1/16 LD\_682



NOTE

- SLOPES WITH A GRADE STEEPER THAN A 3:1 SLOPE SHALL REQUIRE SLOPE TRACKING IF THE STABILIZATION METHOD IS AN EROSION CONTROL BLANKET AND/OR HYDROSEEDING.

Slope Tracking

N.T.S. Source: VHB 10/20 LD\_693

GCE Artillery Road Solar

Artillery Road  
Woodbury, CT

No.	Revision	Date	Apprd.

Designed by	Checked by
TMD	SJK

Issued for Date  
Permitting June 30, 2025

Not Issued for Construction

Site Details 2

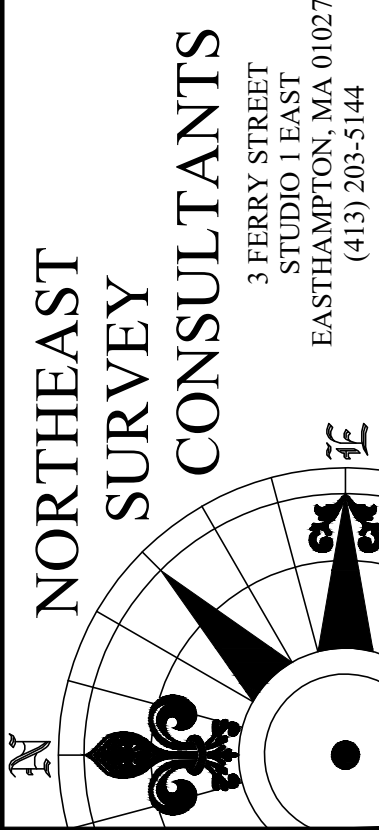
Drawing Number

C5.02

Sheet of  
13 13

Project Number  
43509.00





SURVEYOR:	CGG	ENGINEER:	—
DRAFTING:	JDG	DESIGN:	—
FIELD WORK:	CRC NAE MTR	HORIZ. SCALE:	1" = 120'
PROJECT NUMBER:	24-209	VERT. SCALE:	—
DRAWING NAME:	24-209.DWG	DATE:	11-26-2024

SHEET NO. **1** OF **1**

TYPE OF SURVEY: BOUNDARY SURVEY


BOUNDARY SURVEY CATEGORY: DEFENDANT RESURVEY

CLASS OF ACCURACY: HORIZONTAL CLASS A-2  
TOPOGRAPHIC CLASS T-3

PURPOSE OF SURVEY: PROPOSED SOLAR ARRAY

THIS DOCUMENT AND COPIES THEREOF ARE VALID ONLY IF THEY  
BEAR THE LIVE SIGNATURE AND EMBOSSED SEAL OF THE  
DESIGNATED PROFESSIONAL. UNAUTHORIZED ALTERATIONS RENDER  
ANY DECLARATION NULL AND VOID.

TO THE BEST OF MY KNOWLEDGE AND BELIEF, THIS MAP IS  
SUBSTANTIALLY CORRECT AS NOTED HEREON.

  
 \_\_\_\_\_  
 CHARLES G. GIDMAN, P.L.S. #70103

11-26-2024  
 \_\_\_\_\_  
 DATE