

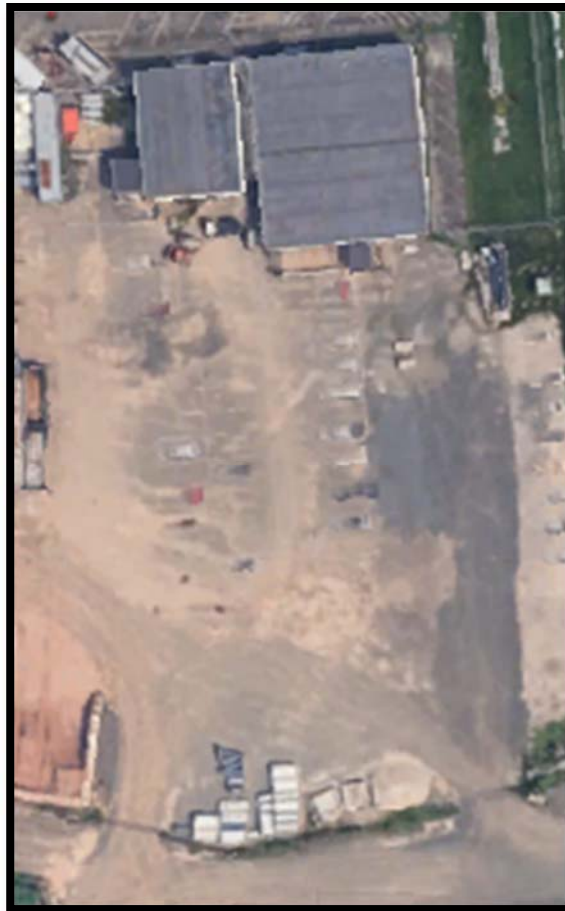
## Project Description

Homestead Fuel Cell 1, LLC (“HFC1” or the “Company”), a wholly-owned subsidiary of FuelCell Energy, Inc. (“FCE”), proposes to construct, operate and maintain a fuel cell generation facility to be located at 235 Brainard Road in Hartford, Connecticut (the “Property”). The facility will be comprised of three natural gas-fueled 2.5-megawatt (“MW”) SureSource 3000 fuel cell power plants manufactured by FCE, which combined are able to generate up to 7.5 MW of Connecticut Class I renewable energy that will be exported to the utility grid. The fuel cell facility will also include three 10 MMBtu/hour natural gas-fired burners that will be used to start-up the fuel cells. All the electricity generated by the facility will be sold to the electric distribution companies.

The Project will occupy an area of approximately 33,000 square feet within the Metropolitan District’s 235 Brainard Road Property (the “Site”). The Site will be specifically located on the east side of a vacant portion of the Property, and it will be surrounded on the north and south side by other industrial buildings. Except for a construction trailer that will be demolished and another construction trailer that will be relocated outside of the Site, no existing structures will either be demolished or altered to construct the fuel cell facility. Additionally, construction of the fuel cell facility will not result in any disturbances to natural resources.

The Site is located in the City of Hartford’s Industrial Zoning District and in one of the Hartford Opportunity Zones. For this reason, the proposed project is the type of energy project that is incentivized by state and federal programs. The fuel cell system will be installed on a concrete foundation.

## Map of the Project Area









### Photographs of Current Site Conditions

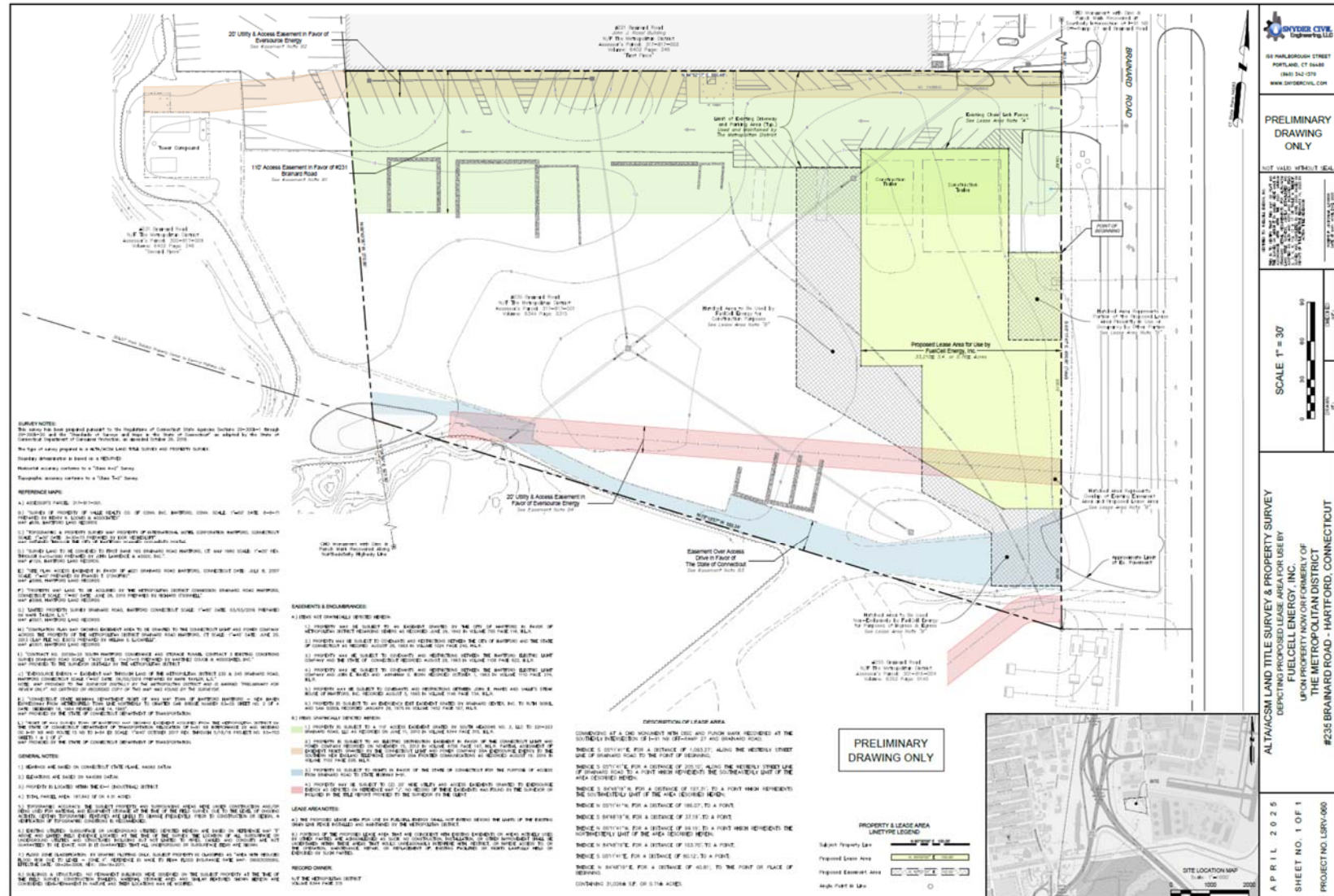


Site view from Brainard Road (northeast corner of the Project Site)

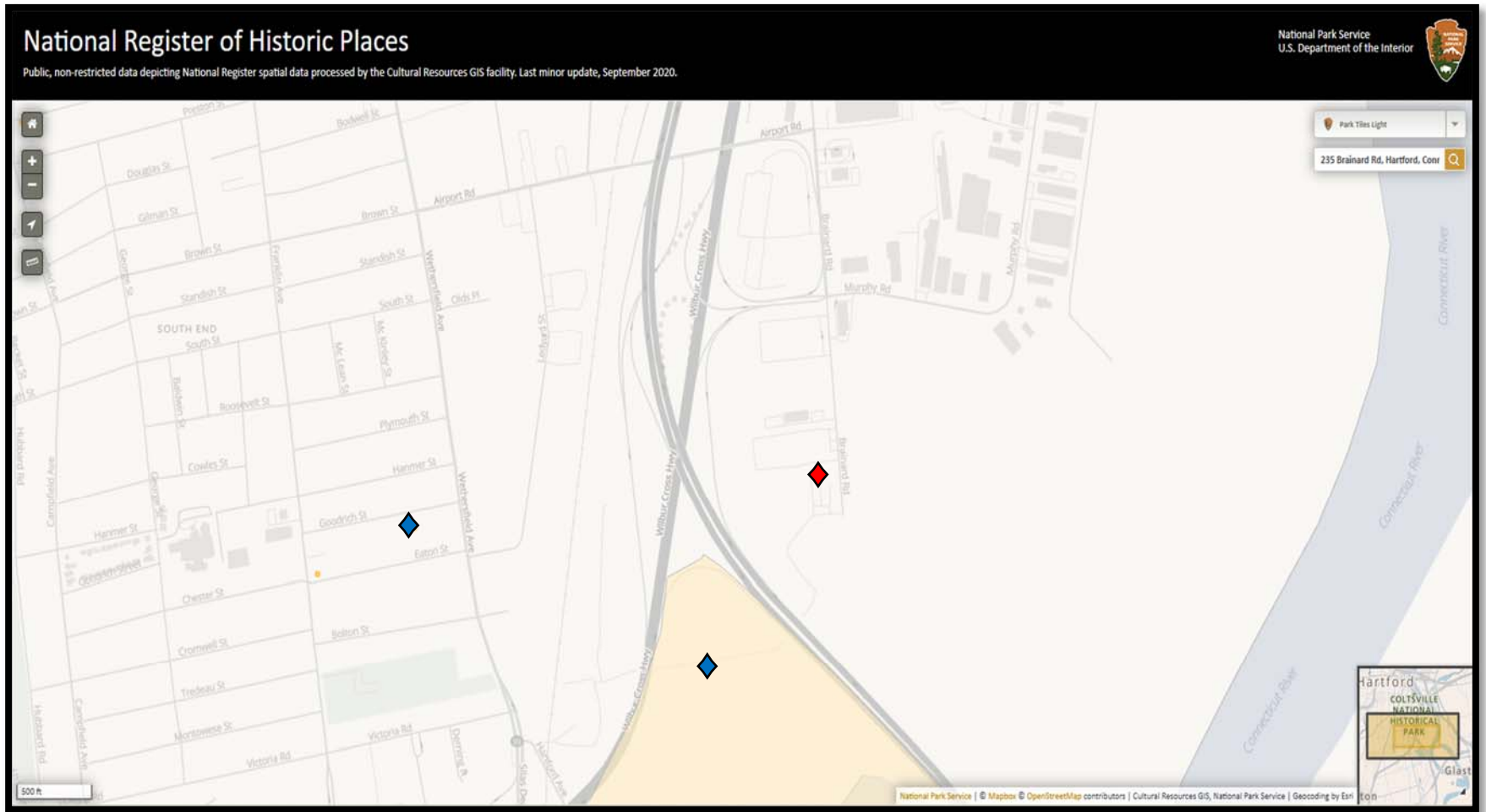


Site view from Brainard Road (southeast corner of the Project Site)

## Site or Project Plans for New Construction



## Map Identifying Historic Properties



◆ Project Site

◆ National Register of Historic Places Property