

Spill Prevention and Response Plan

Borrelli Solar - 2 MW Ground-Mounted Solar Photovoltaic (PV) Facility

Location: 179 and 197 Borrelli Road, East Haven, Connecticut

Date: October 2, 2025

1. Purpose

This Spill Prevention and Response Plan outlines procedures to prevent, control, and respond to potential spills of hazardous materials, such as fuel, oil, and other chemicals, that may be used or stored during construction, operation, or maintenance of the solar PV facility.

2. Applicability

This plan applies to all personnel, contractors, and subcontractors involved in construction and operation of the facility. While the project is not expected to store any petroleum products, limited use of lubricants, hydraulic fluids, and fuels may occur during construction and maintenance activities.

3. Spill Prevention Measures

3.1. Materials Storage

- Hazardous materials (e.g., fuel, oil, lubricants) will be stored in labeled containers with secondary containment (e.g., spill pallets or containment berms).
- No bulk fuel storage is anticipated. If temporary storage is needed during construction, it will not exceed 1,320 gallons onsite at any one time without additional SPCC compliance.
- All containers must be kept in good condition and closed when not in use.

3.2. Equipment Maintenance

- Construction and maintenance vehicles must be inspected daily for leaks.
- Preventative maintenance will be performed to reduce the risk of spills from equipment failure.
- Refueling and fluid changes will occur away from sensitive areas, using drip pans or absorbents to capture drips/spills.

3.3. Stormwater Protection

- Materials will be stored away from stormwater conveyances.
 - Spill containment measures will be implemented in accordance with the project's Stormwater Pollution Prevention Plan (SWPPP).
-

4. Spill Response Procedures

4.1. Discovery of a Spill

- Any observed spill must be immediately reported to the Site Supervisor.
- The area should be secured to prevent further contamination or spread.

4.2. Response Actions

- Use appropriate personal protective equipment (PPE).
- Stop the source of the spill, if safe to do so.
- Contain the spill using absorbents, booms, or other available containment methods.
- Collect and properly dispose of all contaminated materials.
- Notify appropriate regulatory agencies if the spill exceeds reportable quantities.

4.3. Notifications

- **Site Supervisor:** [TBD]
 - **CT DEEP Emergency Response and Spill Prevention Division:**
24-Hour Emergency Number: 1-866-337-7745
 - **National Response Center (NRC):** 1-800-424-8802 (if federally reportable)
 - Record the incident and corrective actions in the project's Environmental Log.
-

5. Training and Inspections

5.1. Training

- All personnel will receive training on spill prevention and response procedures prior to beginning work onsite.
- Refresher training will occur annually and/or following any incident.

5.2. Inspections

- Weekly site inspections during construction to check for proper storage, signs of leaks, and availability of spill kits.
- Monthly inspections during operations.

6. Spill Kits

Spill response kits will be available on-site at all times and include:

- Absorbent pads and booms
- Protective gloves and goggles
- Disposal bags
- Emergency contact list
- Instructions for spill containment and reporting

7. Recordkeeping

Records of inspections, training, spill incidents, and corrective actions will be maintained onsite for a minimum of 3 years and made available to the Connecticut Siting Council or CT DEEP upon request.

Appendix A – Contractor Certifications/Agreements

CONTRACTOR CERTIFICATION

Modified Spill Prevention and Countermeasures Plan and Soil Contact Best Practices Plan

Project Number: _____

Project Title: _____

Operator(s): _____

As a subcontractor, you are required to comply with the modified Spill Prevention and Countermeasures Plan and Soil Contact Best Practices Plan for any work that you perform on- site. Any person or group who violates any condition of the Plan may be subject to substantial penalties or loss of contract. You are encouraged to advise each of your employees working on this project of the requirements of the Plan. A copy of the Plan is available for your review at the office trailer.

Each subcontractor engaged in activities at the construction site that could impact groundwater or stormwater resources must be identified and sign the following certification statement:

I certify that I have read and understand the terms and conditions of the Spill Prevention and Countermeasures Plan for the above designated project and agree to follow the practices described in the Plan.

This certification is hereby signed in reference to the above named project:

Company: _____

Address: _____

Telephone Number: _____

Type of construction service to be provided: _____

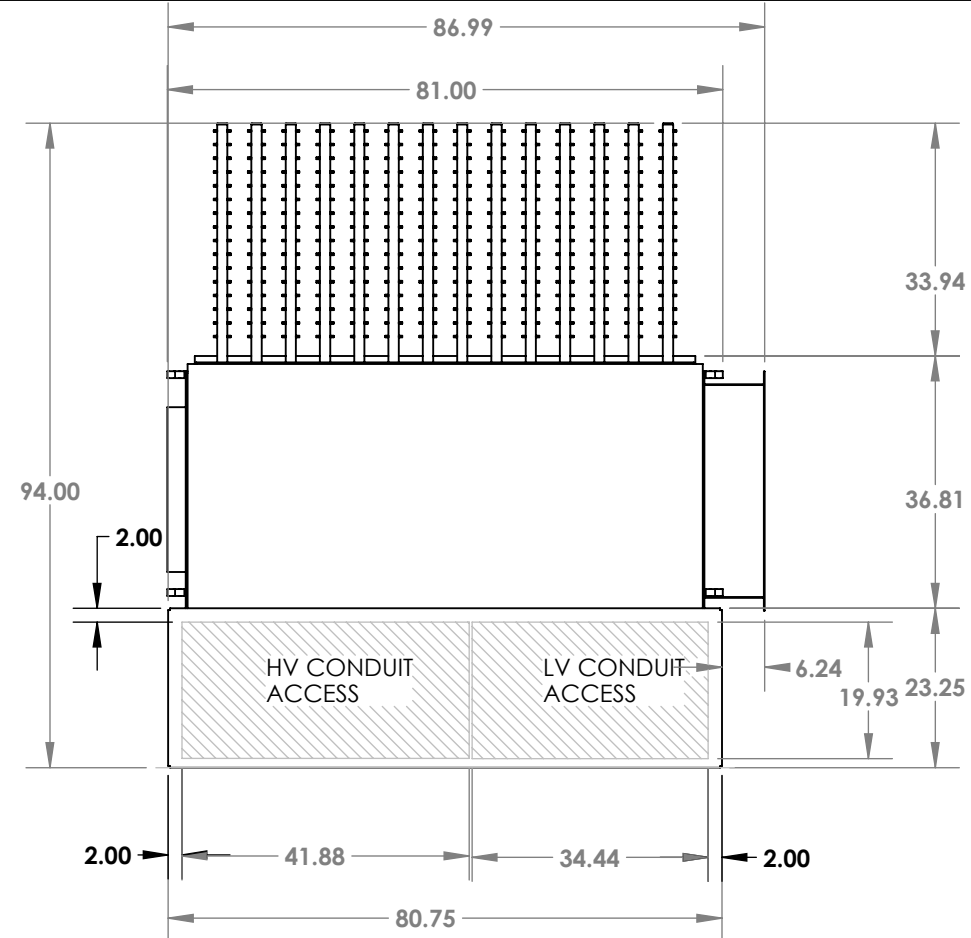
Signature: _____

Title: _____

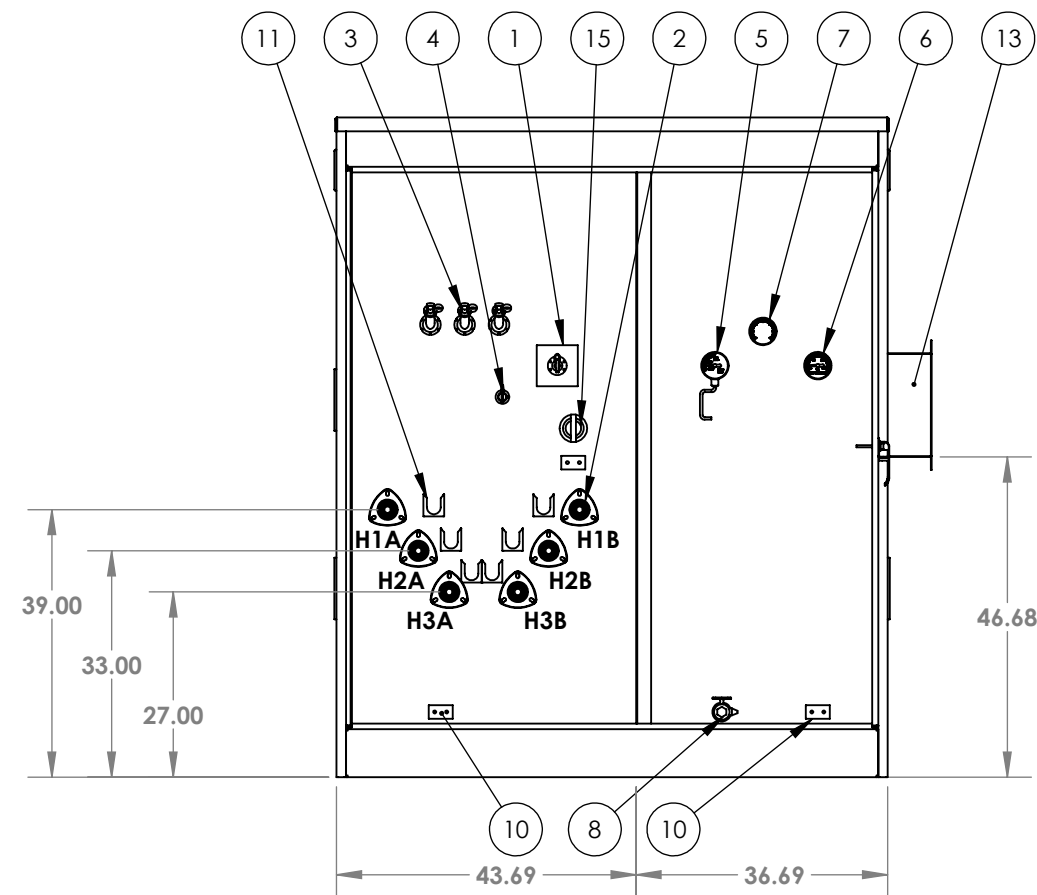
Date: _____

Appendix B – Spill and Soil Contact Incident Log

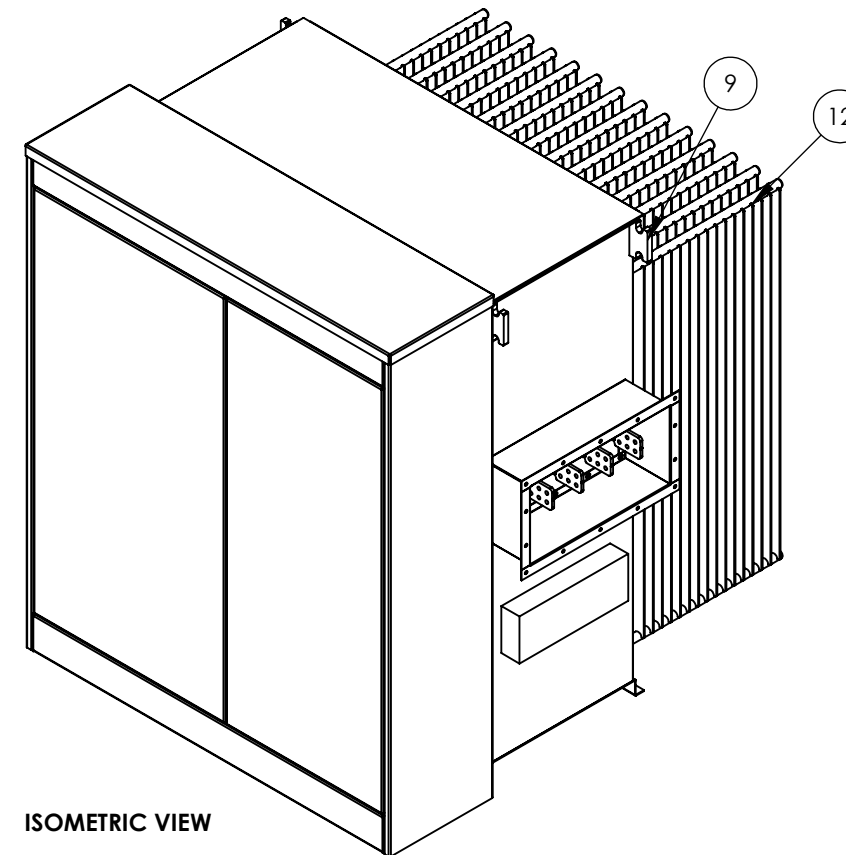
DATE:	DESCRIPTION OF ACTIVITY WHEN SPILL OR INCIDENT WAS DISCOVERED OR OCCURRED:	DESCRIPTION OF REMEDIATION MEASURE, CONTACTS MADE	FOLLOW UP ACTIONS AND RESOLUTION AND REMEDIATION DETAILS:



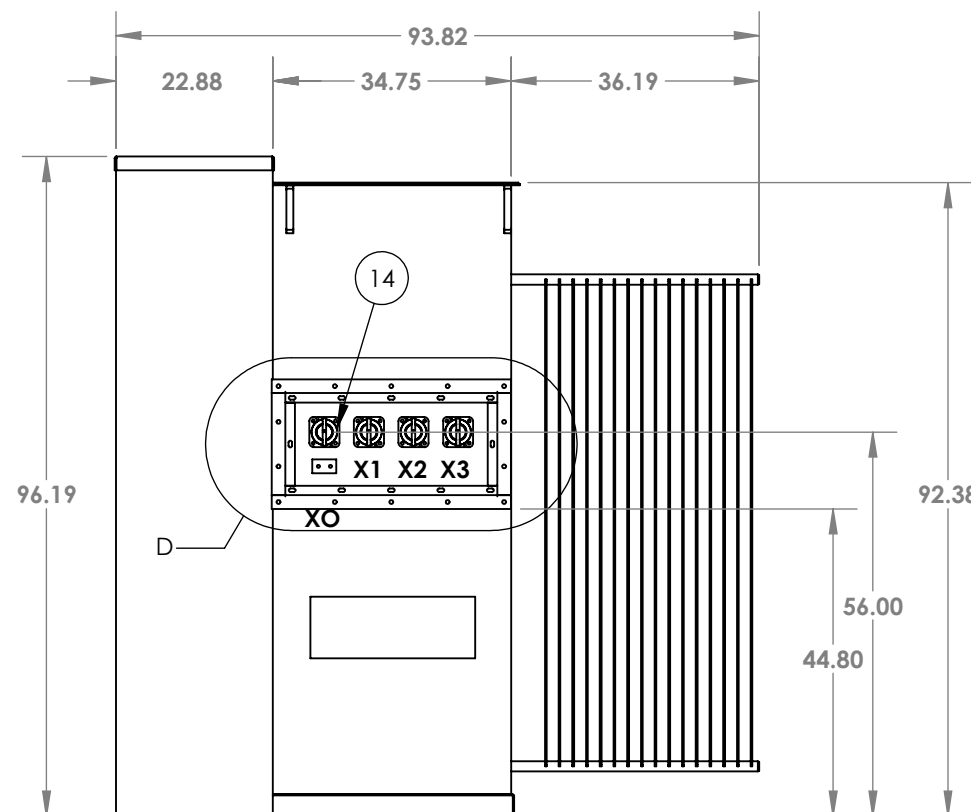
TOP VIEW



FRONT VIEW



ISOMETRIC VIEW



RIGHT VIEW

ITEM NO.	PART NUMBER
1	TAP CHANGER (DE-ENERGIZED OPERATION)
2	WELLS & INSERTS
3	BAYONET
4	4 POS T-BLADE
5	LIQUID LEVEL GAUGE
6	THERMOMETER
7	PRESSURE VACUUM GAUGE
8	DRAIN & SAMPLE VALVE
9	LIFT LUG
10	GROUND PAD
11	PARKING STANDS
12	RADIATOR
13	ALLCO THROAT ASSEMBLY REV2
14	4-HOLE SPADE BUSHING
15	2 HOLE BUSHING FOR HO

THREE PHASE PADMOUNT TRANSFORMER


2000 KVA AT 65 DEGREES C RISE KNAN

HV: 13800GRDY/7970 BIL: 95KV
LV: 600Y/347 BIL: 30KV
HV TAPS: -/+ 5%

APPROXIMATE WEIGHTS & GALLONS

MAIN OIL GALS:	684 GAL. - FR3
CORE & COILS:	5,762 LBS.
TANK & FITTINGS:	5,762 LBS.
MAIN OIL WT:	5,246 LBS.
TOTAL WT:	16,770 LBS.

NOTE: ALL DIMENSIONS & WEIGHTS ARE APPROXIMATE.
THE NUMBER AND PRECISE LOCATIONS OF GAUGES, VALVES,
PRESSURE RELIEF'S, BUSHINGS, AND OTHER COMPONENTS IS
SUBJECT TO CHANGE BEFORE UNIT IS COMPLETE.

TITLE: THREE PHASE PADMOUNT		CUSTOMER: ALLCO TRANSFORMER		REVISION:
IC # 124147546		WORK ORDER # 452880		SALES ORDER # 343332
DRAWN BY: MC	DATE: 07/09/25	CHECKED BY:	DATE:	DRAWING TYPE: OUTLINE
PROPRIETARY AND CONFIDENTIAL THE INFORMATION CONTAINED IN THIS DRAWING IS THE SOLE PROPERTY OF SUNBELT-SOLOMON. ANY REPRODUCTION IN PART OR AS A WHOLE WITHOUT THE WRITTEN PERMISSION OF SUNBELT-SOLOMON IS PROHIBITED.		UNLESS OTHERWISE SPECIFIED DIMENSION ARE IN INCHES		
		 <div style="display: inline-block; vertical-align: middle; margin-left: 20px;"> SUNBELT SOLOMON </div>		
SHEET 1 OF 2				