

## **ATTACHMENT 5**



# REMOTE FIELD REVIEW



**CT SITING COUNCIL PETITION NO. 1651**  
**RESPONSE TO INTERROGATORY #82**  
SALEM BATTERY ENERGY STORAGE SYSTEM  
380 NEW LONDON ROAD  
SALEM, CT

PREPARED FOR:  
**FAIRY LAKE, LLC**

PREPARED BY:  
**ALL-POINTS TECHNOLOGY CORPORATION, P.C.**  
567 Vauxhall Street Extension – Suite 311  
Waterford, CT 06385





## PHOTO LOG

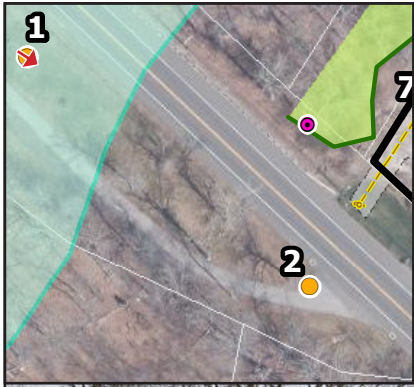
- |                           |                              |                           |                           |                                     |                             |                         |
|---------------------------|------------------------------|---------------------------|---------------------------|-------------------------------------|-----------------------------|-------------------------|
| ● Photo Markers           | Limit of Disturbance         | ✕ Fence                   | Grass Berm                | Temporary Construction Staging Area | Delineated Wetland Boundary | ▶ Perennial Watercourse |
| ● Photo Locations         | Gravel Pad                   | — Noise Barrier Wall      | Stormwater Swale          | Stormwater Basin                    | Approx. Wetland Boundary    | ● Culvert               |
| □ Property                | Battery Storage Inverter Pad | — OH Utility Line & Poles | Stormwater Level Spreader | Stormwater Level Spreader           | Approx. Wetland Area        | 500-Year Flood Zone     |
| □ Approx. Parcel Boundary | Access Drive                 | — UG Utility Line         | Treeline                  |                                     | Vernal Pool                 |                         |



Proposed Battery Storage Facility  
CT Salem New London Rd  
380 New London Road  
Salem, Connecticut







PHOTO

DESCRIPTION

1

**NEW LONDON ROAD LOOKING SOUTHEAST TOWARD ACCESS DRIVE**





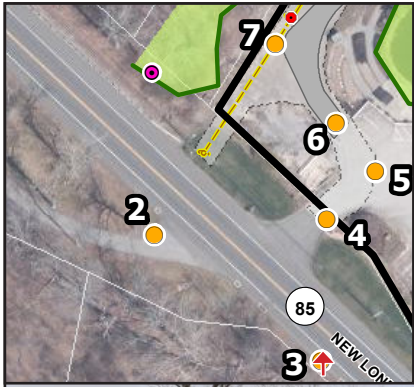
PHOTO

2

DESCRIPTION

**NEW LONDON ROAD LOOKING NORTHEAST TOWARD PROPOSED PROJECT AREA**





PHOTOGRAPHED 01/27/2025

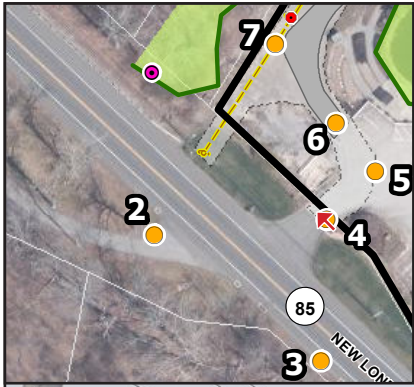
PHOTO

DESCRIPTION

3

**NEW LONDON ROAD LOOKING NORTH TOWARD EXISTING ACCESS DRIVE**





PHOTOGRAPHED ON 2/12/2025

PHOTO

DESCRIPTION

4

ACCESS DRIVE LOOKING NORTHWEST



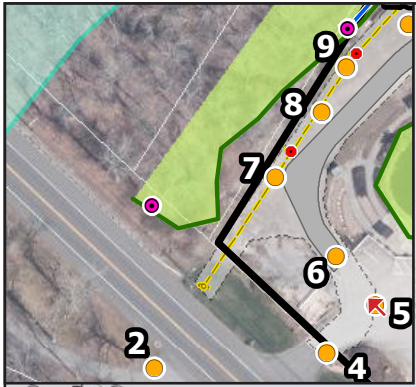
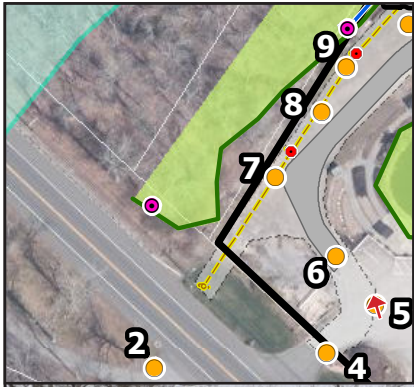


PHOTO  
5A

DESCRIPTION  
ACCESS DRIVE LOOKING NORTHWEST

PHOTOGRAPHED ON 2/12/2025





PHOTOGRAPHED ON 2/12/2025

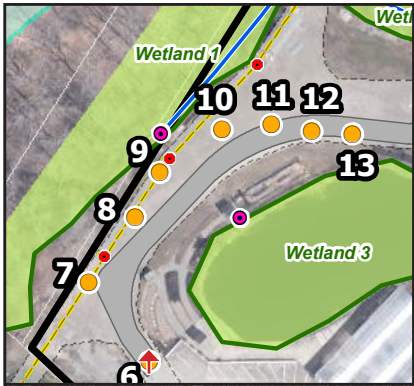
PHOTO

5B

DESCRIPTION

ACCESS DRIVE LOOKING NORTH





PHOTOGRAPHED ON 2/12/2025

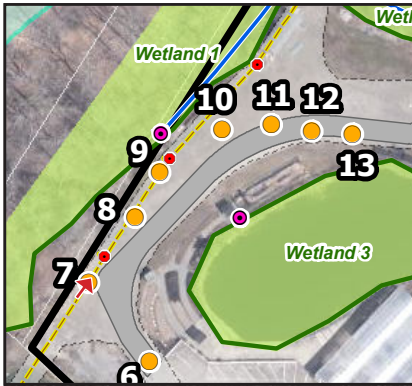
PHOTO

6

DESCRIPTION

ACCESS DRIVE LOOKING NORTH





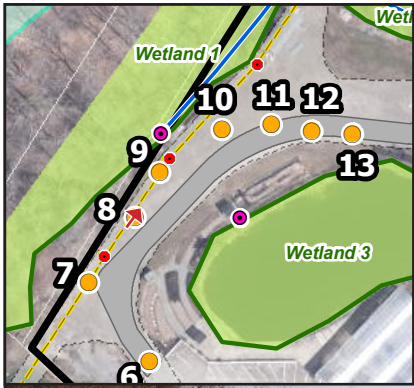
PHOTO

7

DESCRIPTION

**ALONG PROPOSED OVERHEAD ELECTRIC ROUTE LOOKING NORTHEAST**





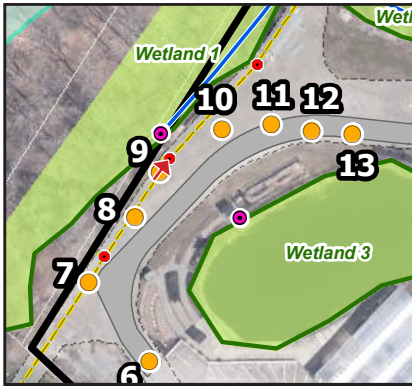
PHOTO

DESCRIPTION

8

ALONG PROPOSED OVERHEAD ELECTRIC ROUTE LOOKING NORTHEAST





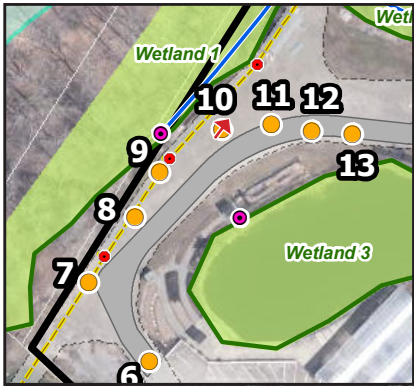
PHOTO

9

DESCRIPTION

ALONG PROPOSED OVERHEAD ELECTRIC ROUTE LOOKING NORTHEAST





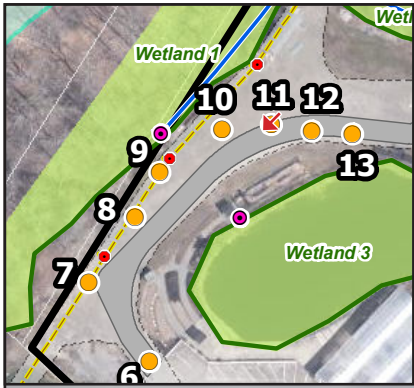
PHOTO

DESCRIPTION

10

ALONG PROPOSED OVERHEAD ELECTRIC ROUTE LOOKING NORTHEAST





PHOTO

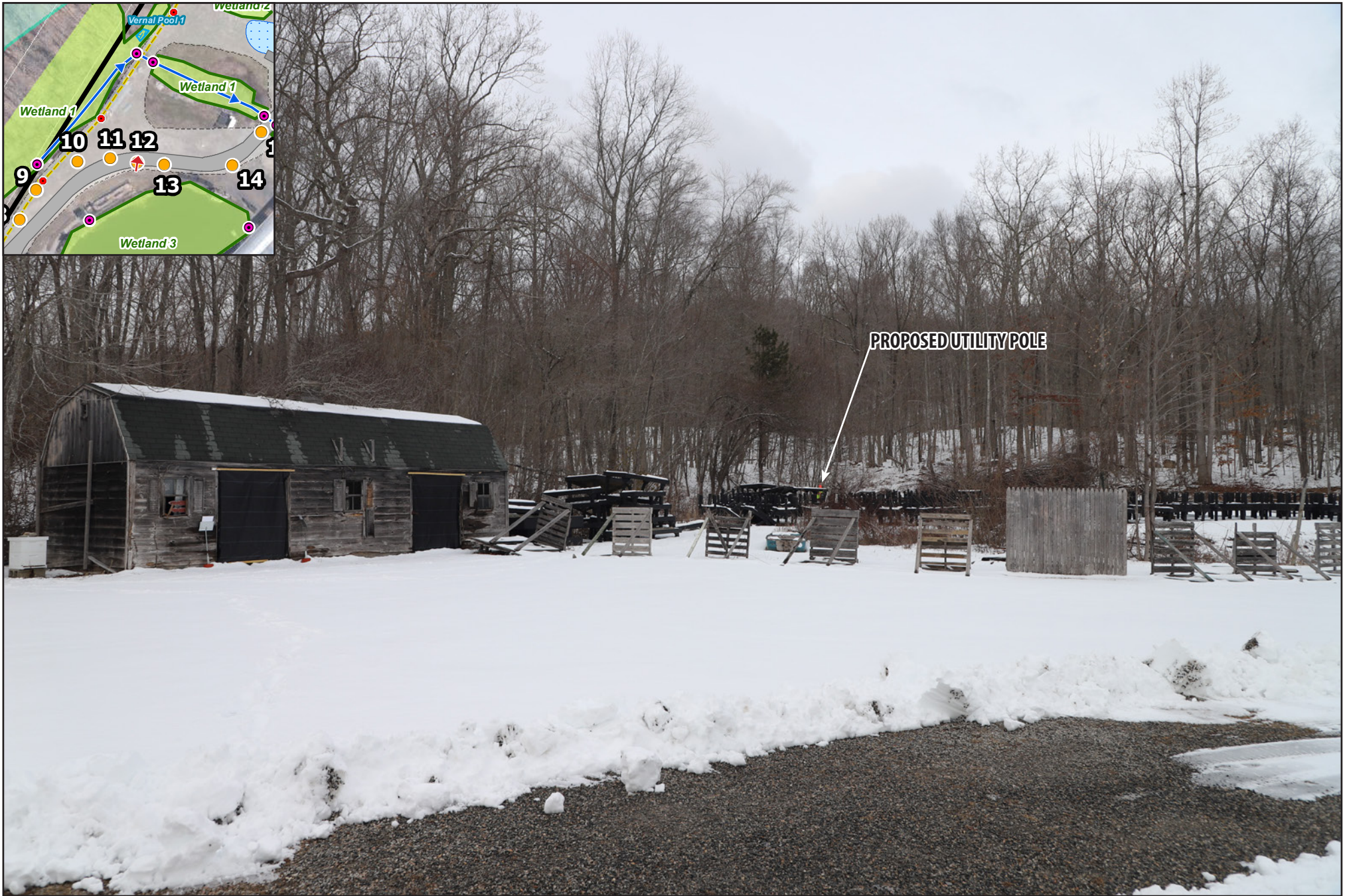
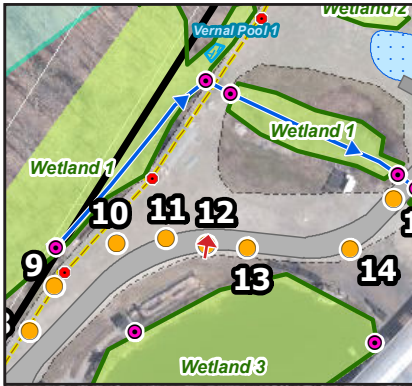
11

DESCRIPTION

**ACCESS ROAD LOOKING SOUTHWEST**

PHOTOGRAPHED ON 2/12/2025





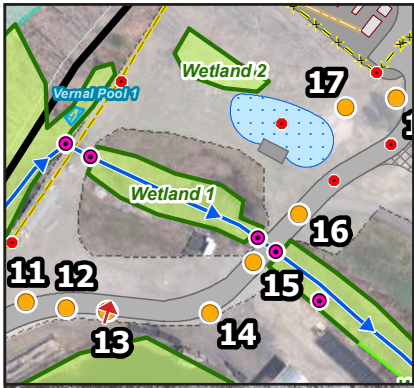
PHOTO

12

DESCRIPTION

ACCESS ROAD LOOKING NORTH





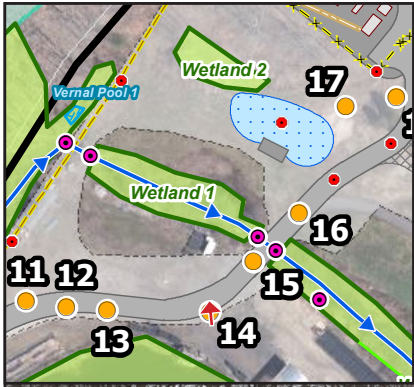
PHOTO

13

DESCRIPTION

ACCESS ROAD LOOKING NORTH





PHOTO

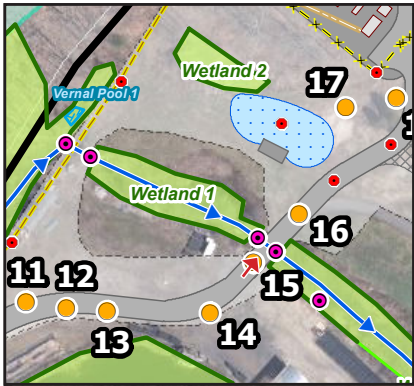
DESCRIPTION

14

ACCESS ROAD LOOKING NORTH

PHOTOGRAPHED ON 2/12/2025





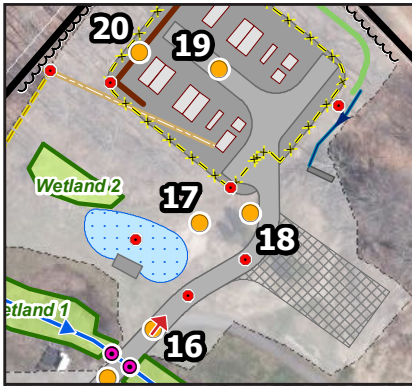
PHOTO

15

DESCRIPTION

ACCESS ROAD LOOKING NORTHEAST





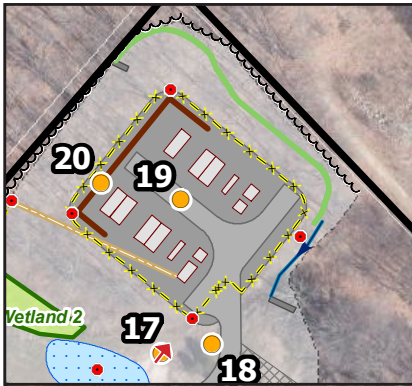
PHOTO

16

DESCRIPTION

ACCESS ROAD LOOKING NORTHEAST





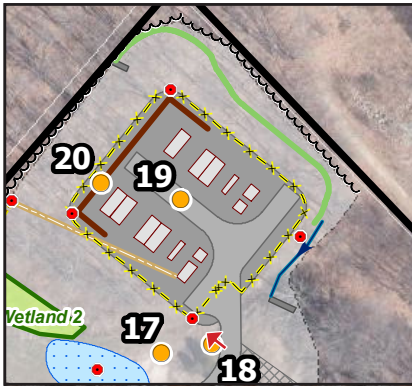
PHOTO

17

DESCRIPTION

WEST OF ACCESS ROAD LOOKING NORTHEAST





PHOTO

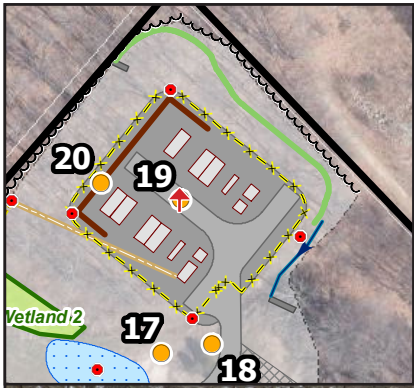
18

DESCRIPTION

ACCESS ROAD LOOKING NORTHWEST

PHOTOGRAPHED 01/27/2025





PHOTO

19A

DESCRIPTION

CENTER OF PROPOSED FACILITY LOOKING NORTH

PHOTOGRAPHED 01/12/2025



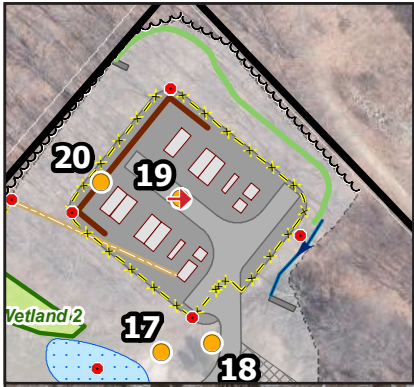


PHOTO  
19B

DESCRIPTION

CENTER OF PROPOSED FACILITY LOOKING EAST



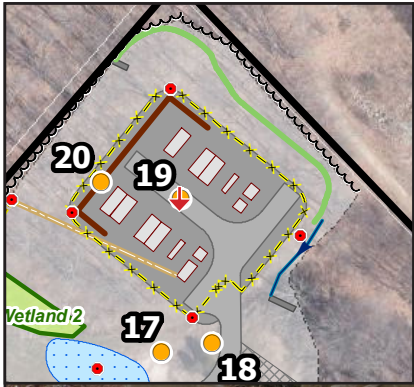


PHOTO  
19C

DESCRIPTION

CENTER OF PROPOSED FACILITY LOOKING SOUTH

PHOTOGRAPHED 01/12/2025



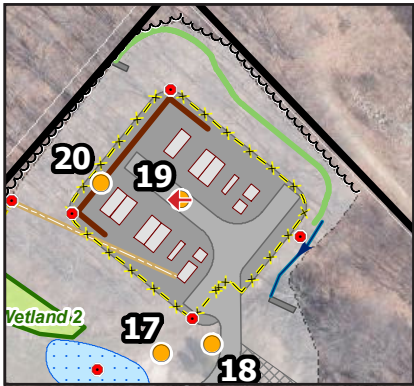
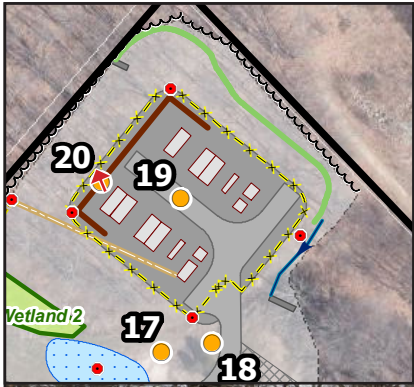


PHOTO  
19D

DESCRIPTION

CENTER OF PROPOSED FACILITY LOOKING WEST





PHOTOGRAPHED ON 2/12/2025

PHOTO

DESCRIPTION

20

**WESTERN EDGE OF PROPOSED FACILITY LOOKING NORTHWEST TOWARD 45 EMERALD GLEN LANE**