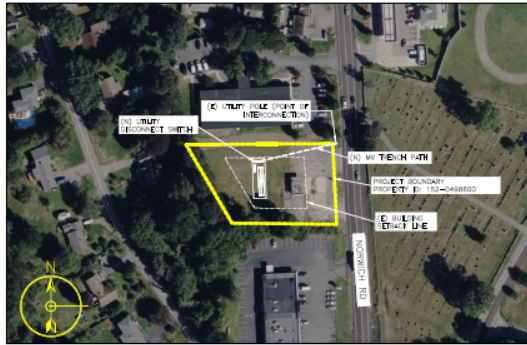


Figure 1. Excerpt from a USGS 7.5' series topographic quadrangle image showing the location of the proposed project area in Waterford, Connecticut.

Q CELLS – 40 NORWICH RD
 40 NORWICH RD, WATERFORD CT 06375
 4,000KW/11,008KWH BESS

REGIONAL MAP



SYSTEM SPECIFICATION

BESS POWER CONVERTER SYSTEM (PCS)

SUNGROW SC4000UD-MV-US
 [BESS CONVERTER + MV XFMR]
 MAX POWER 4000KVA @ 45°C

TOTAL NUMBER OF CONVERTERS-#1

BESS CONTAINER

SUNGROW BATTERY CONTAINERS
 ST2752UX-US
 LIQUID COOLING ENERGY STORAGE
 CAPACITY = 2752KWH

TOTAL NUMBER OF CONTAINERS-#4

TEMPERATURE CONSIDERATIONS	
STD TEMPERATURE [°C]	25
ASHRAE 2% HIGH AMBIENT TEMPERATURE [°C]	27
ASHRAE EXTREME MIN. LOW AMBIENT TEMPERATURE [°C]	-14

APPLICABLE CODES:

- 2020 NATIONAL ELECTRIC CODE (NEC)
- 2021 INTERNATIONAL BUILDING CODE (IBC)
- 2021 INTERNATIONAL FIRE CODE (IFC)

DESIGN CRITERIA:

- COLD DESIGN TEMPERATURE: -3°C
- HOT DESIGN TEMPERATURE: 36°C

DRAWING INDEX

Sheet Number	Sheet Title
E.000	TITLE PAGE
E.100	SITE PLAN
E.200	SLD
E.400	SPECS 01
E.500	SITE VICINITY MAP
E.501	ENVIRONMENTAL RESOURCES
E.502	ENVIRONMENTAL RESOURCES 02
E.503	ENVIRONMENTAL RESOURCES 3
E.504	ENVIRONMENTAL RESOURCES 4
E.505	ENVIRONMENTAL RESOURCES 5

PROJECT TEAM

PV ENGINEER:
 HENRY HOLBROOK HYDE III
 HYDE RENEWABLES, INC.
 4735 WALNUT STREET, SUITE #110
 BOULDER, CO 80301
 WWW.HYDERENEWABLES.COM
 P: (720) 900-1009

SCOPE OF WORK

INSTALLATION OF A NEW 4000KW BATTERY STORAGE SYSTEM AND ASSOCIATED EQUIPMENT.



THESE DRAWINGS AND SPECIFICATIONS HAVE BEEN PREPARED BY HYDE RENEWABLES, INC. FOR THEIR EXCLUSIVE USE IN ACCORD WITH TITLE 20 SEC. 20-300-10 OF THE CONNECTICUT ADMINISTRATIVE CODE.



SCALE: AS NOTED
 (PRINT ON 36"x24")

TV	30%	07/26/23
BY	REVISION/ISSUE	DATE

FIRM NAME AND ADDRESS
 HYDE RENEWABLES, INC
 4735 WALNUT ST, SUITE #110
 BOULDER, CO 80301
 INFO@HYDERENEWABLES.COM
 720-900-1009
 WWW.HYDERENEWABLES.COM

PROJECT NAME AND ADDRESS
 Q CELLS – 40 NORWICH RD
 40 NORWICH RD, WATERFORD CT 06375

SHEET TITLE
 TITLE PAGE

DRAWN BY TV	SHEET # E.000
DATE 05/11/2023	
CHECKED BY TRIPP HYDE	

Figure 2. Project plans provided by the client.

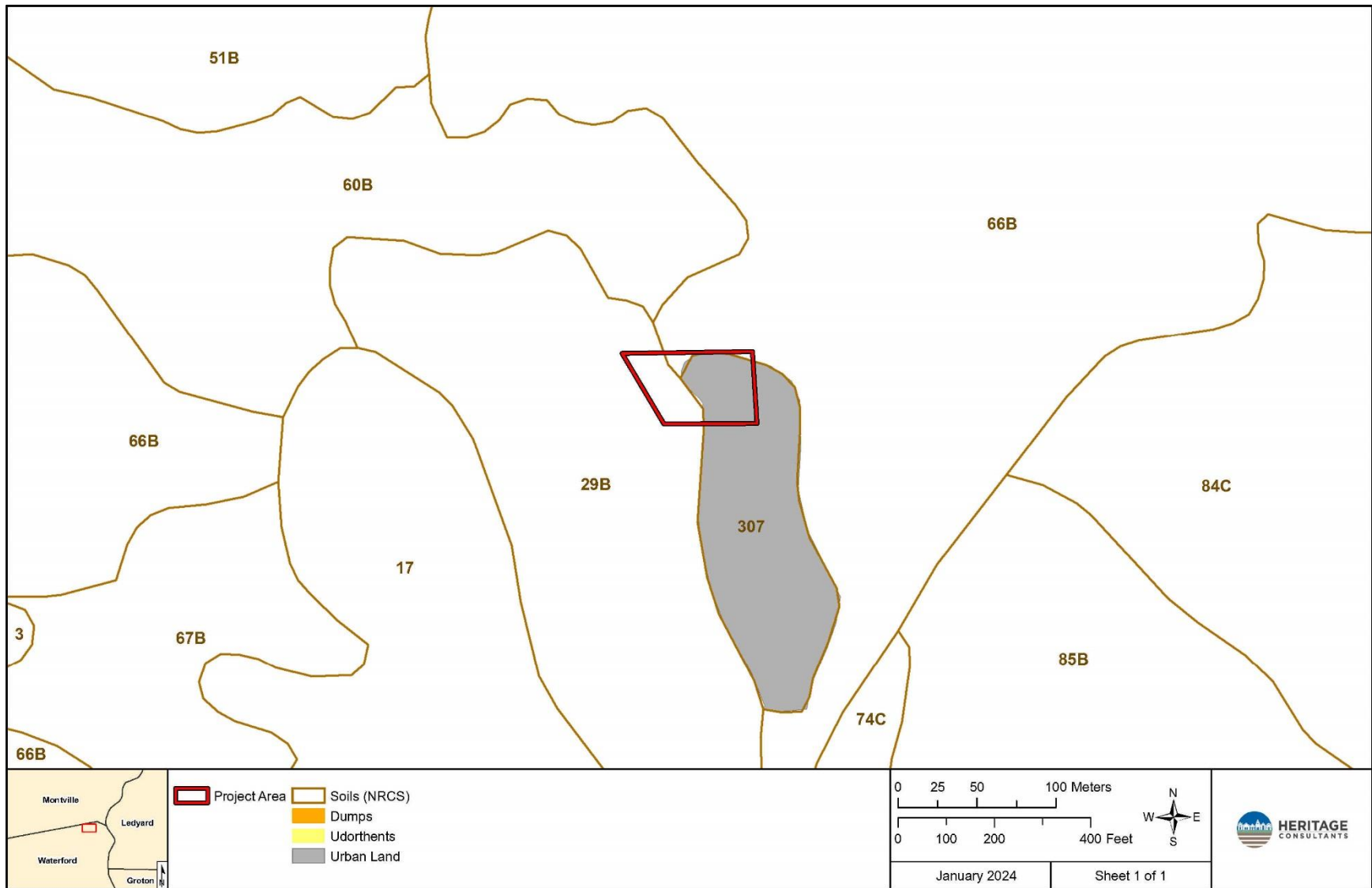


Figure 3. Digital map depicting the soil types present in the vicinity of the project area in Waterford, Connecticut.

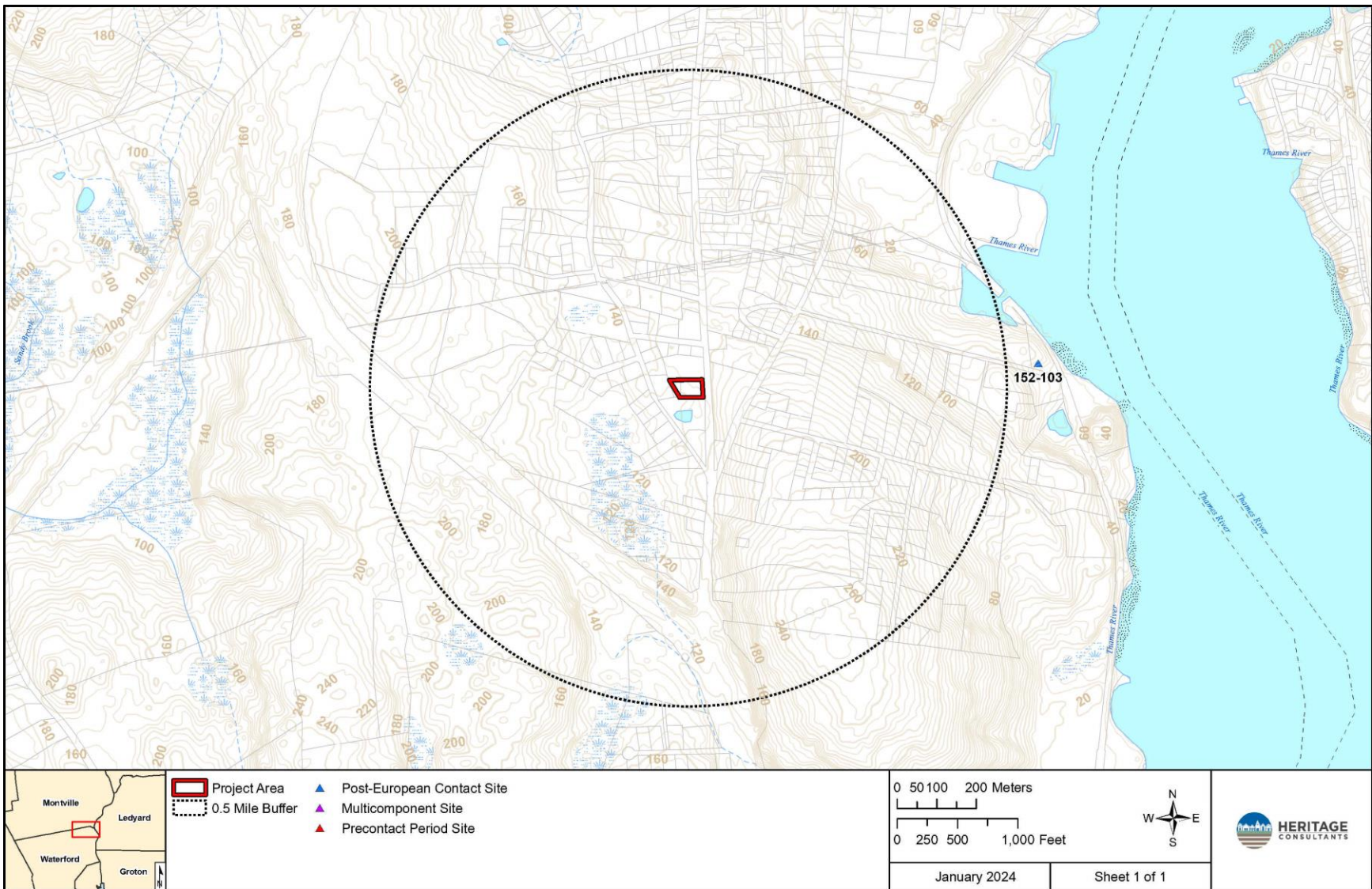


Figure 4. Digital map depicting the locations of the previously identified archaeological sites in the vicinity of the proposed project area in Waterford, Connecticut.

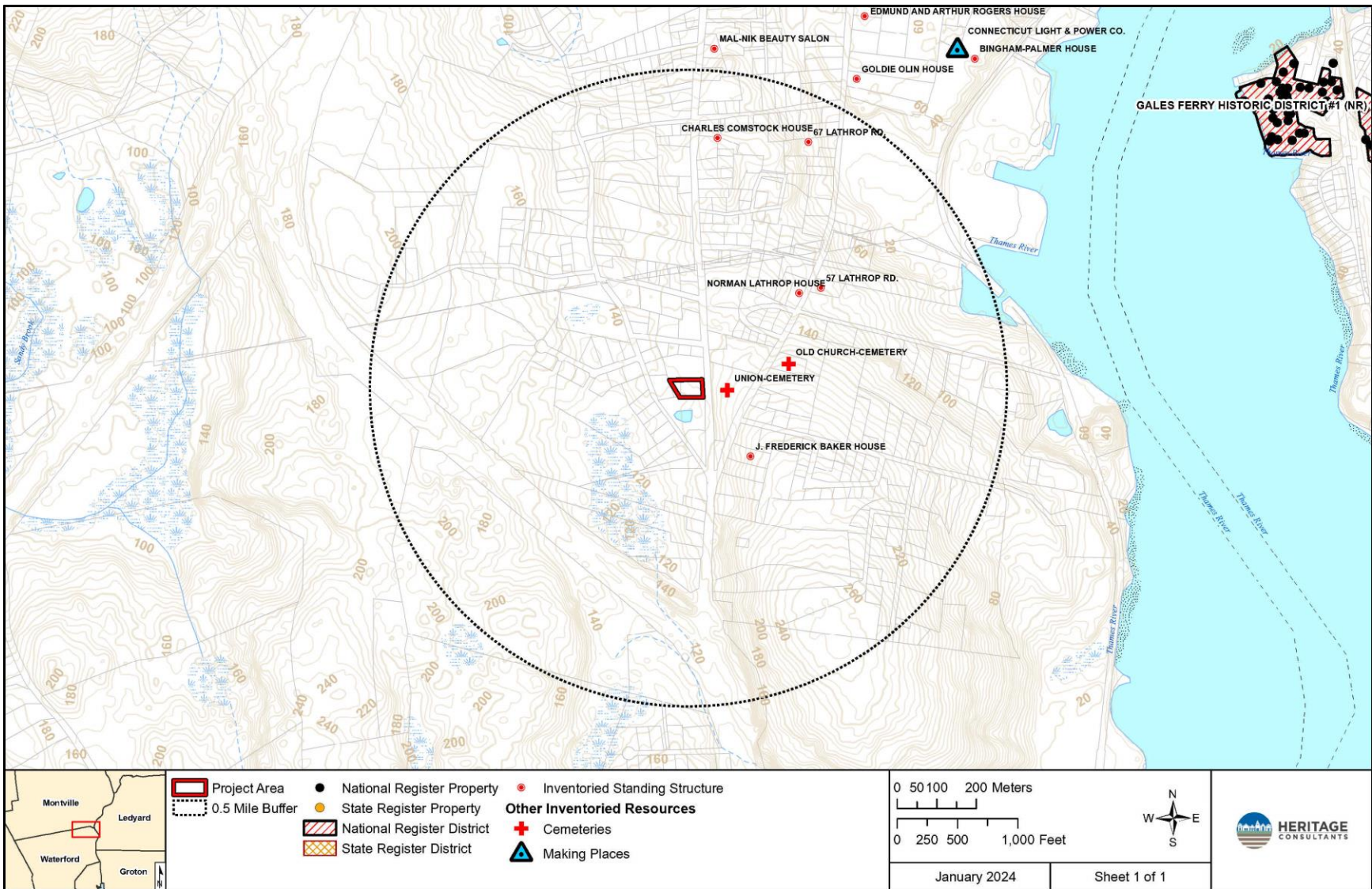


Figure 5. Digital map depicting the locations of the previously identified National Register of Historic Places and State Register of Historic places properties in the vicinity of the proposed project area in Waterford, Connecticut.



Figure 6. Excerpt from an 1854 map showing the location of the proposed project area in Waterford, Connecticut.

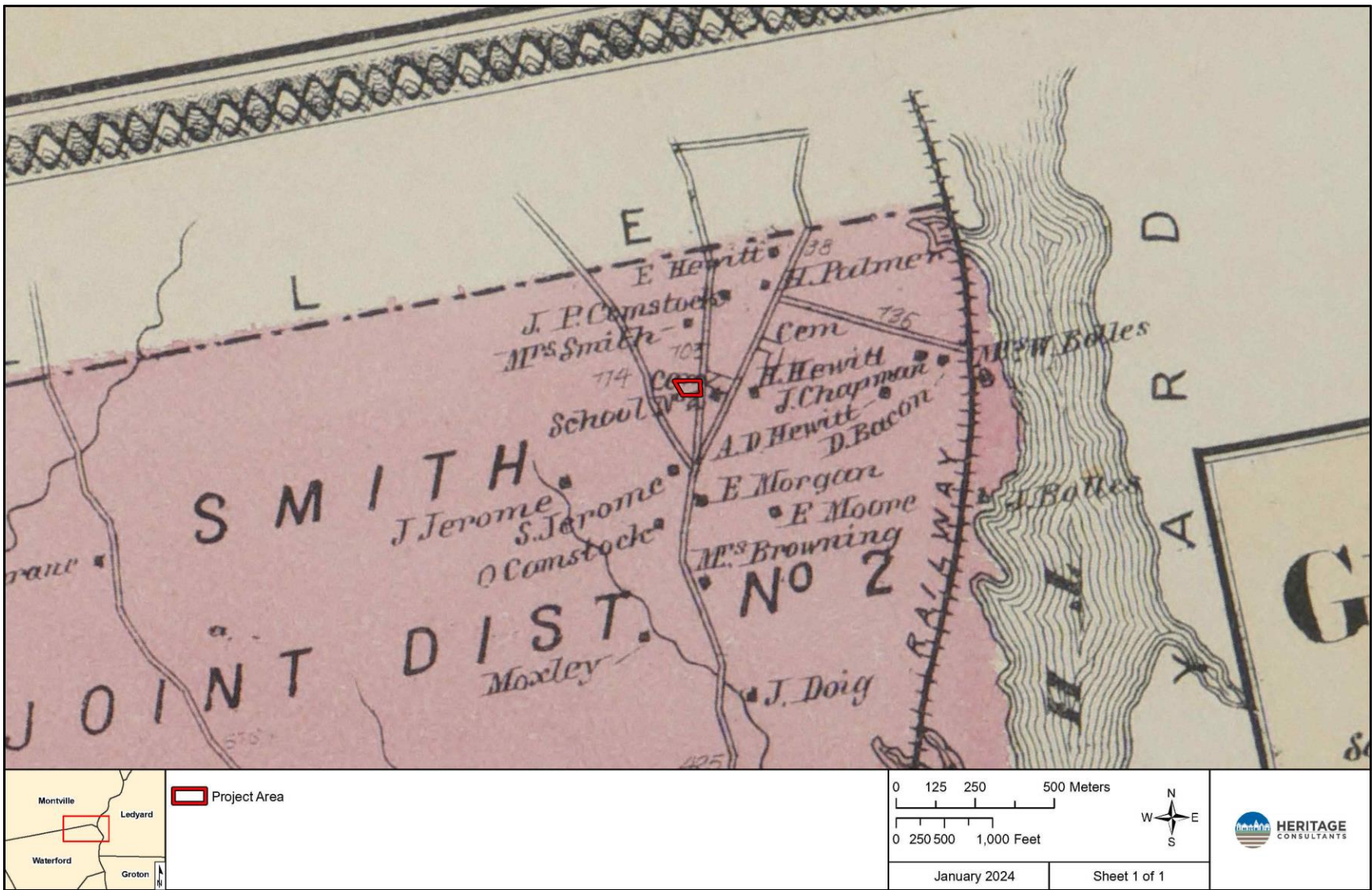


Figure 7. Excerpt from an 1868 map showing the location of the proposed project area in Waterford, Connecticut.



Figure 8. Excerpt from a 1934 aerial photograph showing the location of the proposed project area in Waterford, Connecticut.



Figure 9. Excerpt from a 1951 aerial photograph showing the location of the proposed project area in Waterford, Connecticut.



Figure 10. Excerpt from a 1970 aerial photograph showing the location of the proposed project area in Waterford, Connecticut.



Figure 11. Excerpt from a 2004 aerial photograph showing the location of the proposed project area in Waterford, Connecticut.



Figure 12. Excerpt of a 2019 aerial photograph showing the location of the project parcel and sensitivity areas in Waterford, Connecticut.



Figure 13. Excerpt of a 2019 aerial photograph with directional arrows of photo points taken of the project parcel and sensitivity areas in Waterford, Connecticut.