

EXHIBIT G

Photographic Site Documentation

Remote Field Review

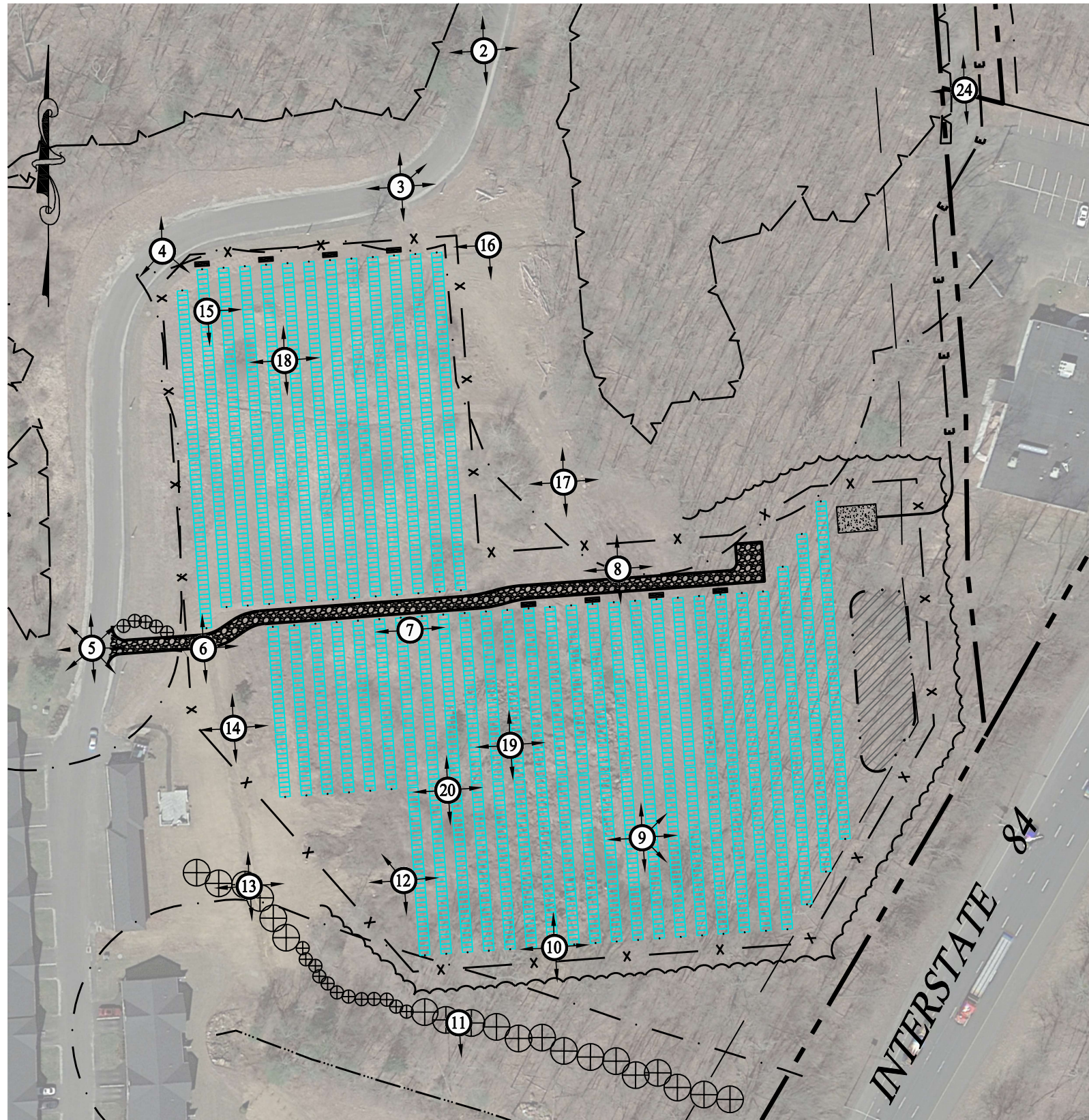


Proposed Solar Energy Facility
37 Hunters Lane
Southington, Connecticut
Document 1 of 2













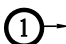
Prepared For:
TRITEC Americas, LLC

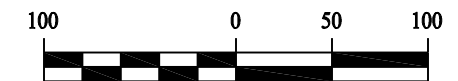
Prepared By:
Solli Engineering, LLC
501 Main Street #2A
Monroe, CT 06468





LEGEND

| | |
|---|------------------------------------|
|  | PROPERTY LINE |
|  | RIGHT-OF-WAY LINE |
|  | ADJOINING LOT LINE |
|  | BUILDING SETBACK |
|  | WETLAND LIMIT |
|  | UPLAND REVIEW AREA - 100 FT BUFFER |
|  | EDGE OF ACCESS DRIVE |
|  | STORMWATER BASIN AREA |
|  | CHAIN LINK FENCE |
|  | TRINA 540W SOLAR MODULES |
|  | ELECTRIC CONDUIT |
|  | LIMIT OF TREE CLEARING |
|  | PHOTO POINT LOCATION |



| Rev. #: | Date | Description |
|---------|------|-------------|
| | | |
| | | |
| | | |

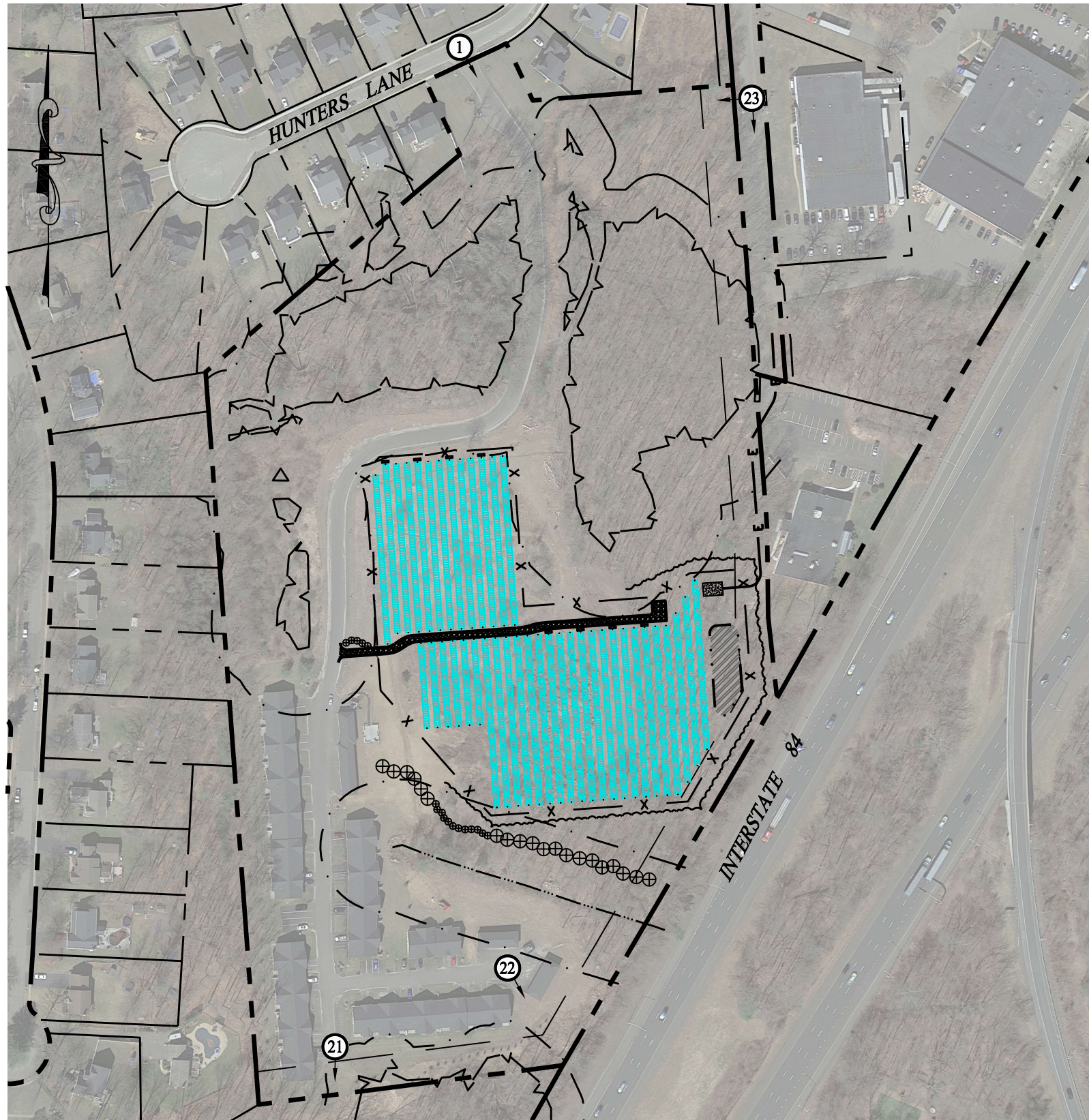
SOLLI
ENGINEERING
501 Main Street, Monroe, CT 06468
T: (203) 880-5455 | F: (203) 880-9695

Drawn By: SFU
Checked By: KMS
Project #: 22108701
Plan Date: 11/17/23
Scale: 1" = 100'

Project: **PROPOSED SOLAR PHOTOVOLTAIC ARRAY**
37 HUNTERS LANE
SOUTHINGTON, CONNECTICUT

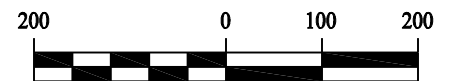
Sheet Title: **REMOTE FIELD REVIEW**

SHEET #: **FIG.1**



LEGEND

| | |
|--|------------------------------------|
| | PROPERTY LINE |
| | RIGHT-OF-WAY LINE |
| | ADJOINING LOT LINE |
| | BUILDING SETBACK |
| | WETLAND LIMIT |
| | UPLAND REVIEW AREA - 100 FT BUFFER |
| | EDGE OF ACCESS DRIVE |
| | STORMWATER BASIN AREA |
| | CHAIN LINK FENCE |
| | TRINA 540W SOLAR MODULES |
| | ELECTRIC CONDUIT |
| | LIMIT OF TREE CLEARING |
| | PHOTO POINT LOCATION |



| Rev. #: | Date | Description |
|---------|------|-------------|
| | | |
| | | |
| | | |

SOLLI
ENGINEERING
501 Main Street, Monroe, CT 06468
T: (203) 880-5455 | F: (203) 880-9695

Drawn By: SFU
Checked By: KMS
Project #: 22108701
Plan Date: 11/17/23
Scale: 1" = 200'

Project: **PROPOSED SOLAR PHOTOVOLTAIC ARRAY**
37 HUNTERS LANE
SOUTHINGTON, CONNECTICUT

Sheet Title: **REMOTE FIELD REVIEW**

SHEET #: **FIG.2**



Photo 1: Hunters Lane looking South



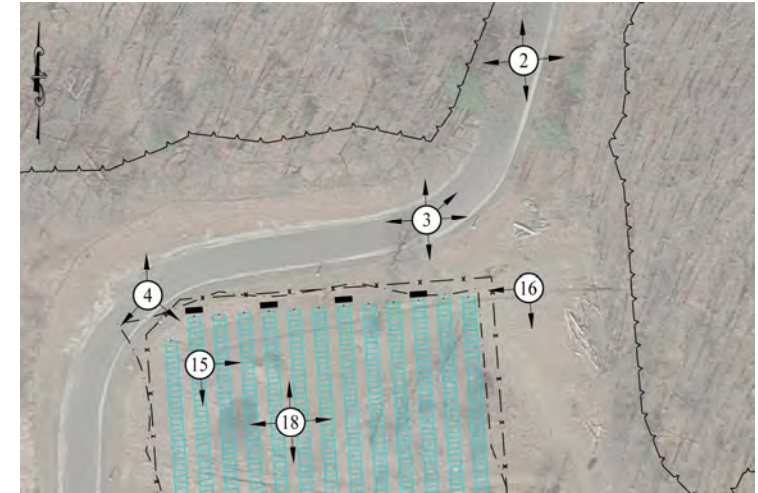
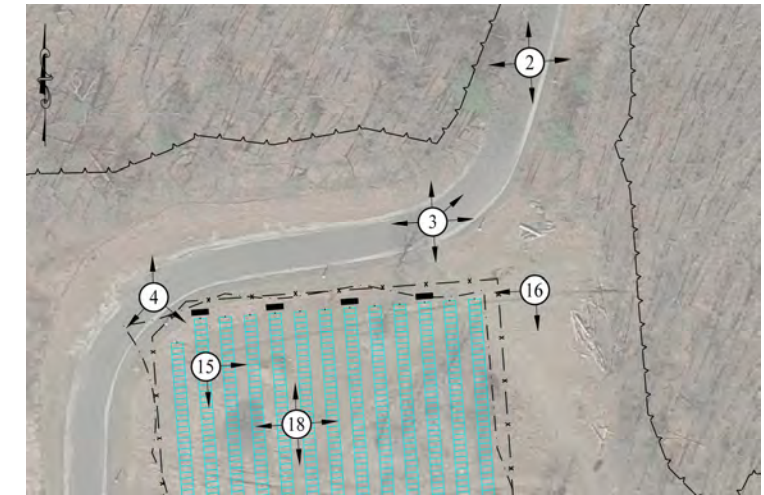
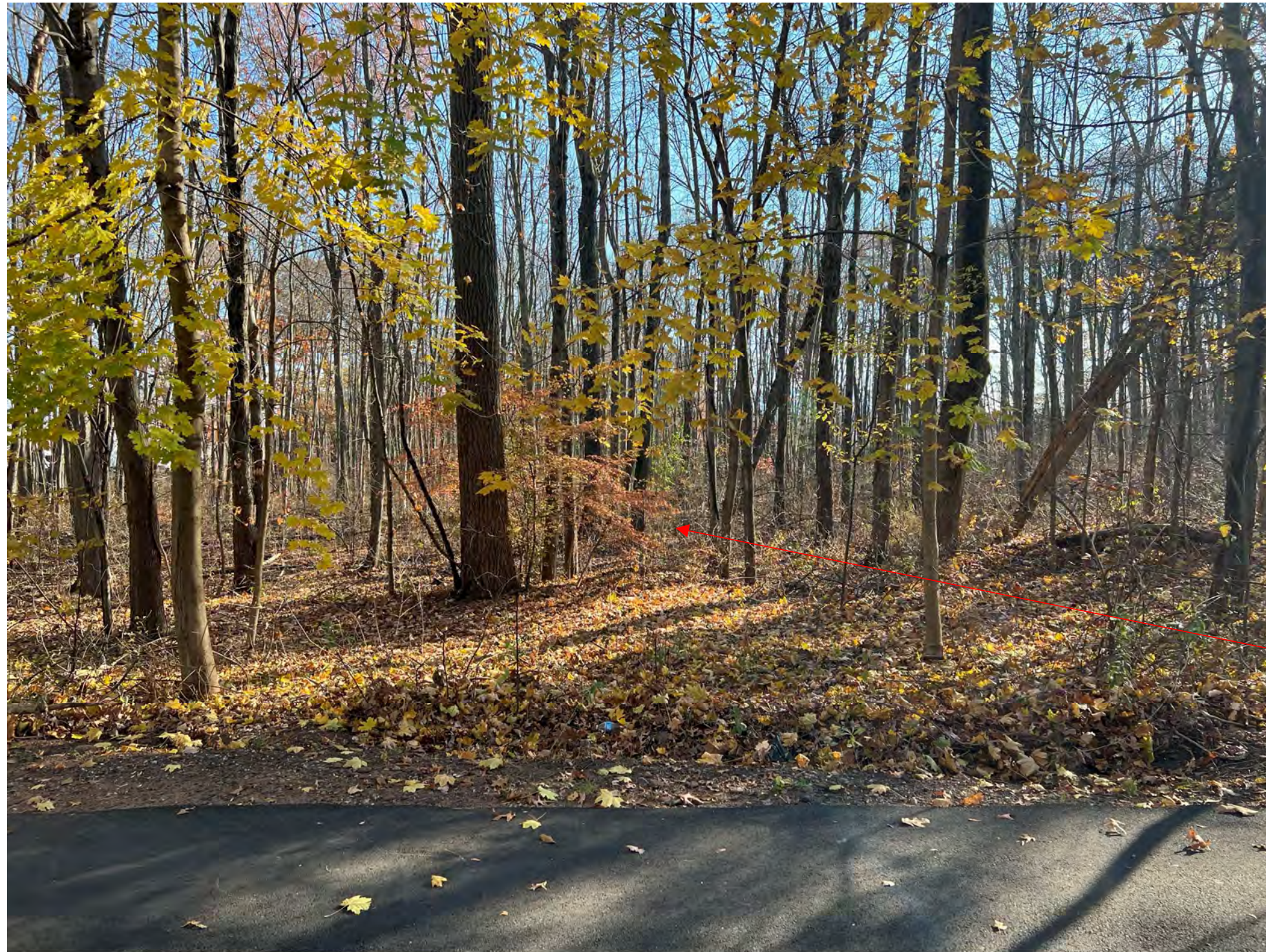


Photo 2: Looking North

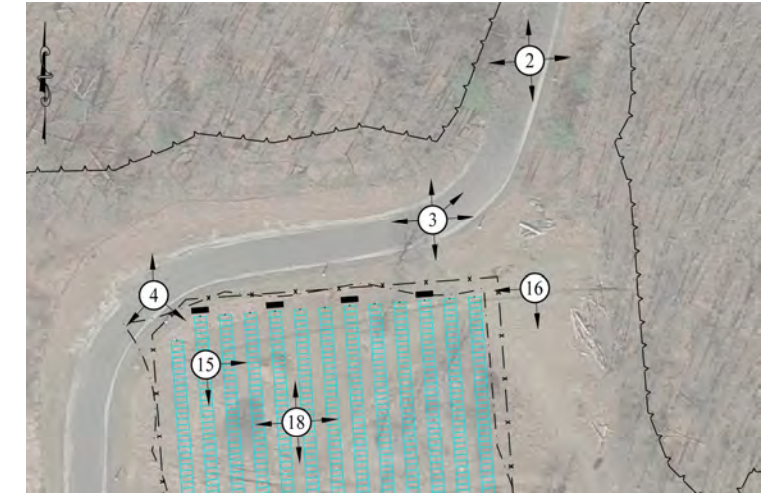




Approximate Location
of Wetlands

Photo 2: Looking East



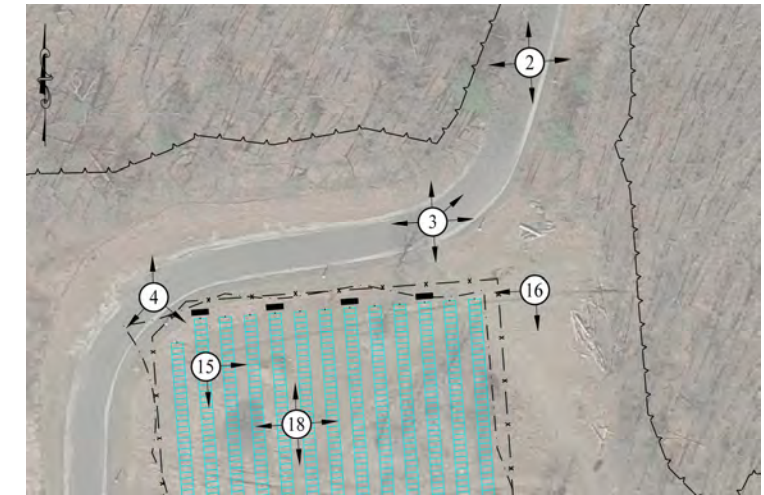
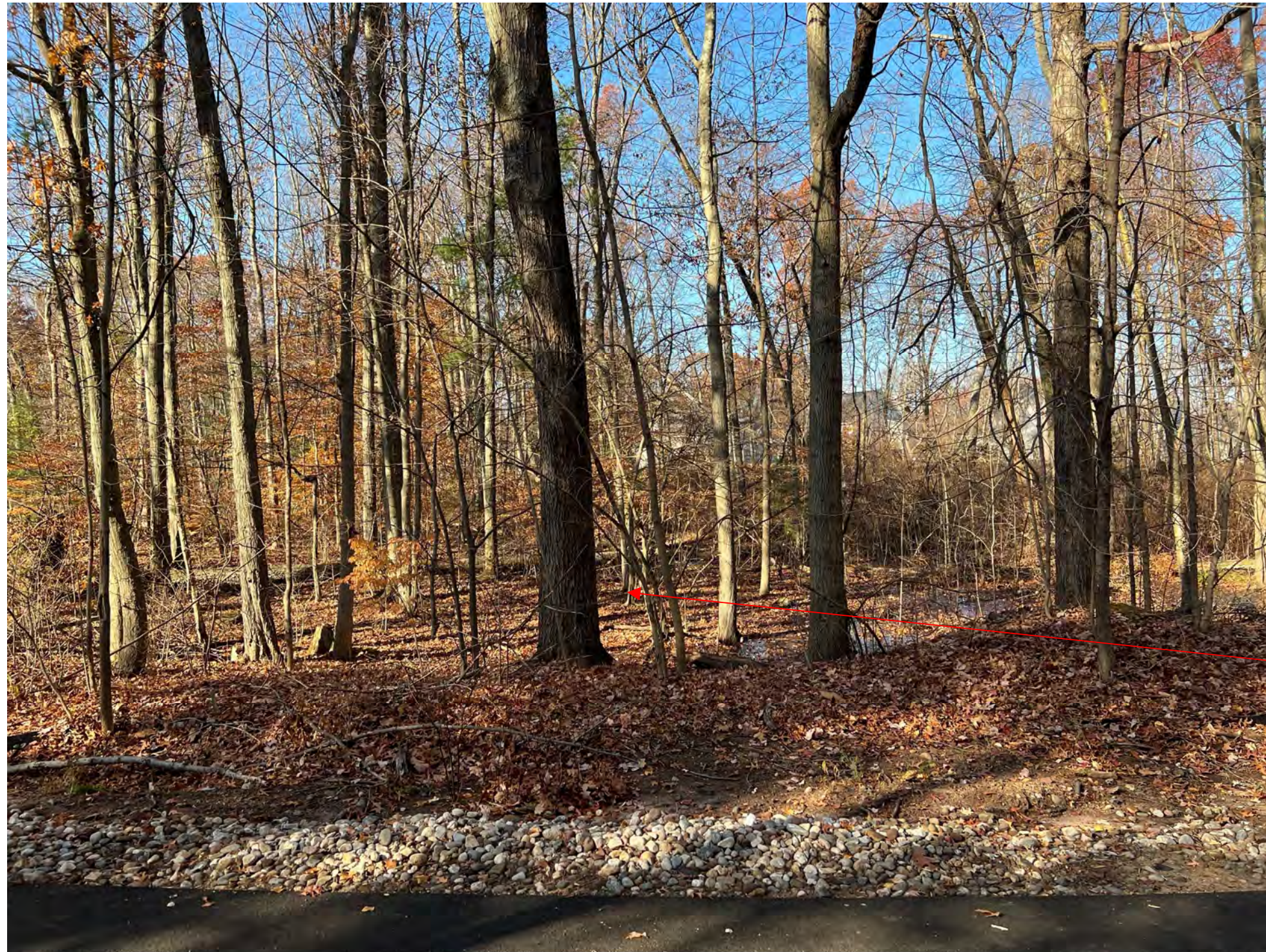


Existing On-Site Housing (Typ.)

Existing Light Pole & Structure (Typ.)

Photo 2: Looking South

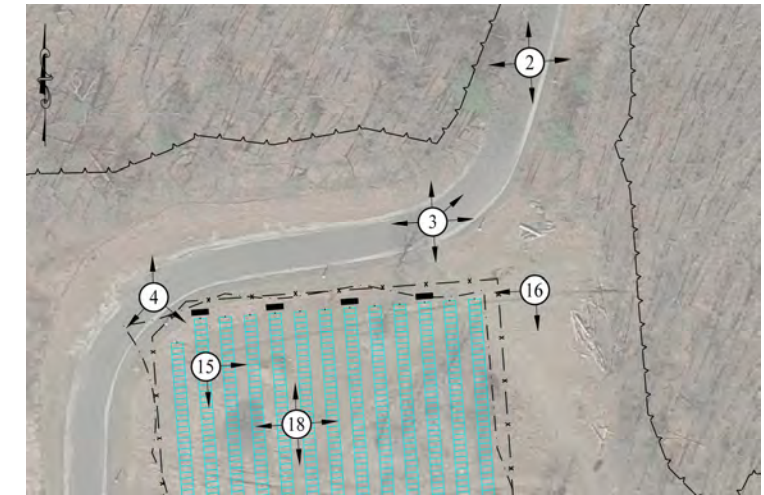




Approximate Location
of Wetlands

Photo 2: Looking West





Approximate Location
of Wetlands

Photo 3: Looking North



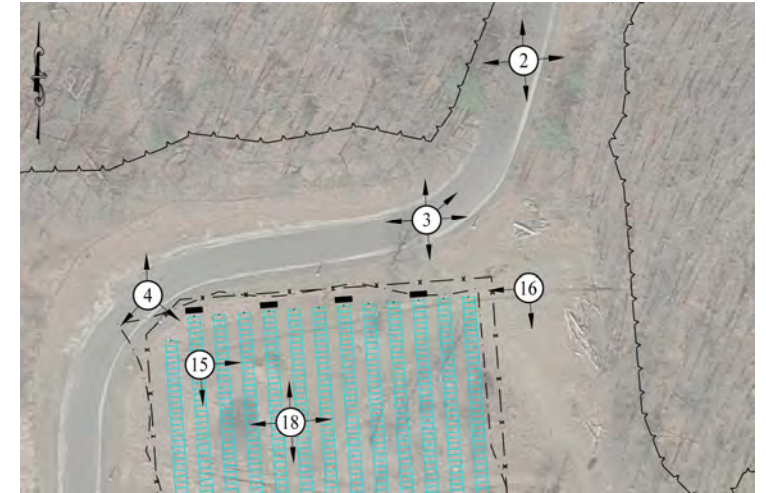


Photo 3: Looking Northeast



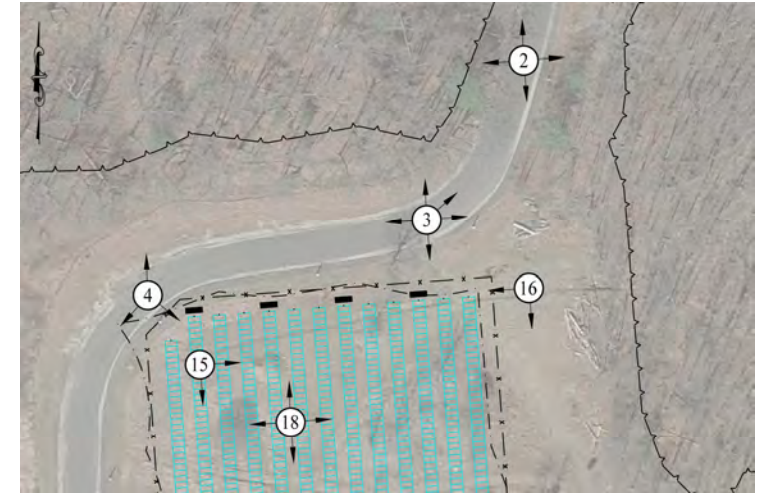
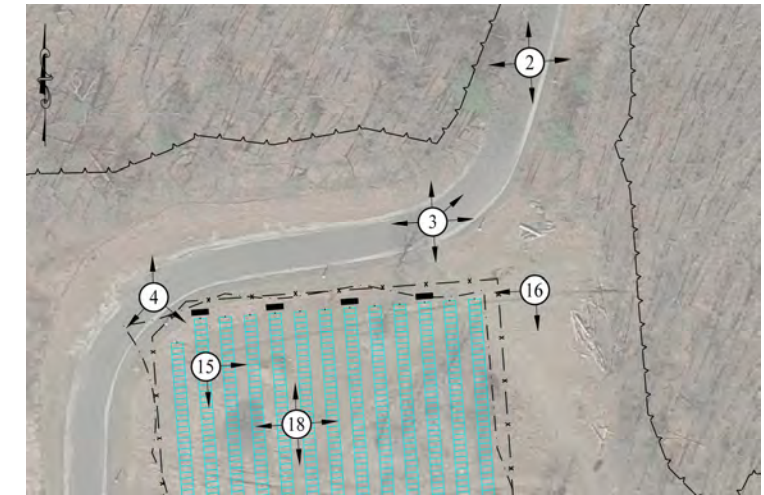


Photo 3: Looking Southeast



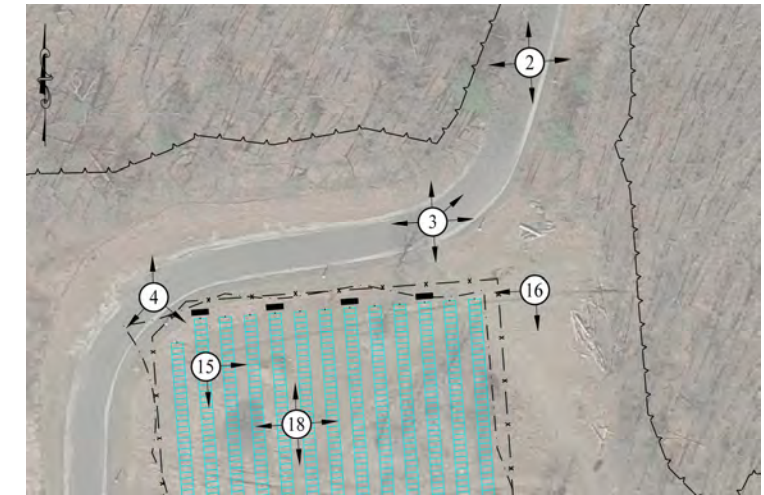


Beehive

Approximate Location
of Proposed Chain-
Link Fence

Photo 3: Looking South

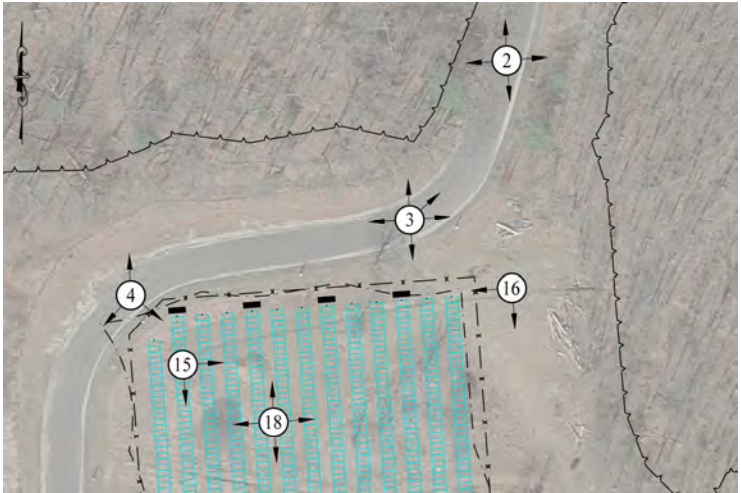




Approximate Location
of Proposed Chain-
Link Fence

Photo 3: Looking West

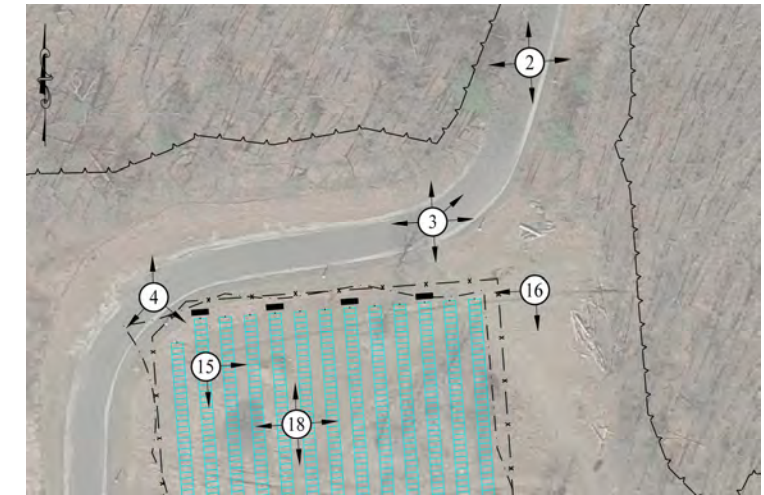




Neighboring
Properties

Photo 4: Looking North





Approximate Location
of Proposed Chain
Link Fence

Photo 4: Looking Southeast



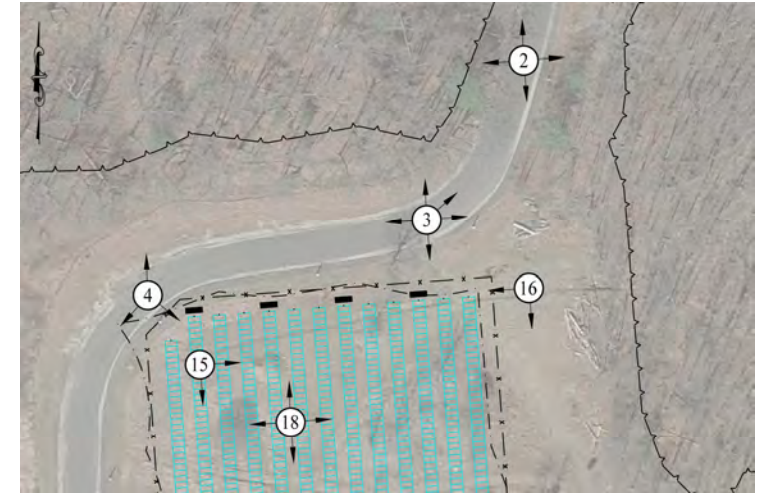
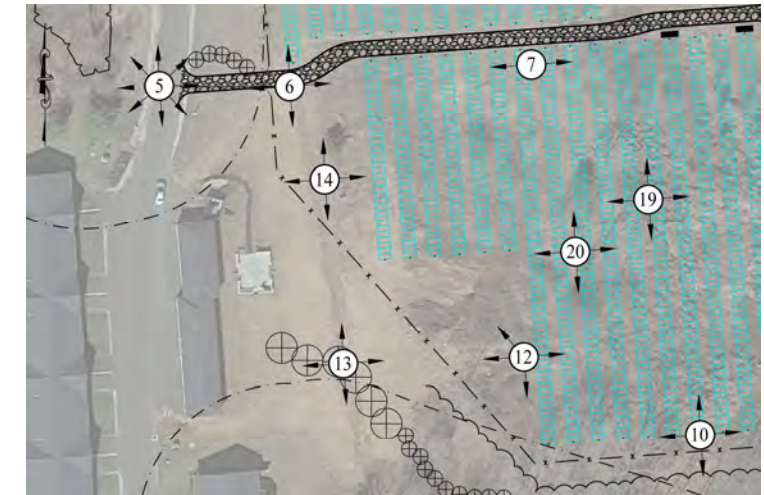


Photo 4: Looking Southwest

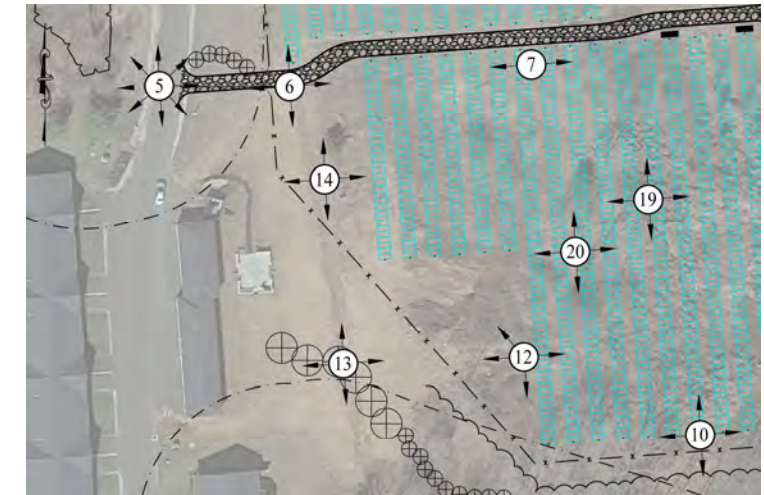




Neighboring
Properties

Photo 5: Looking North



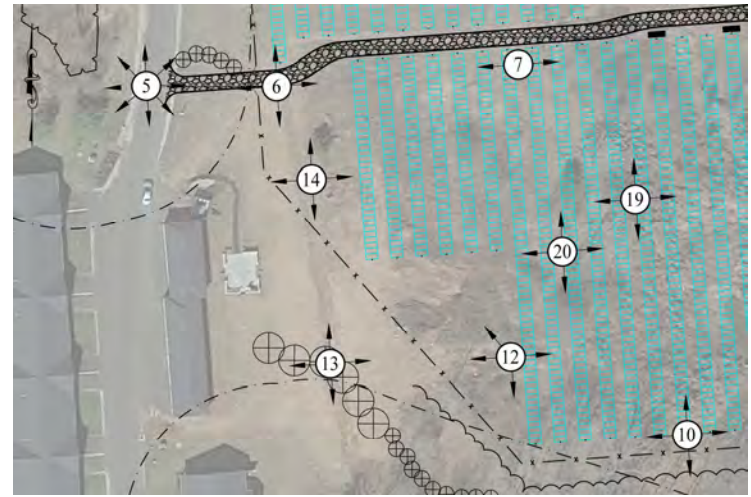


Approximate Location
of Proposed
Evergreen Tree Buffer

Approximate Location
of Proposed Gravel
Road Driveway
Entrance

Photo 5: Looking Northeast



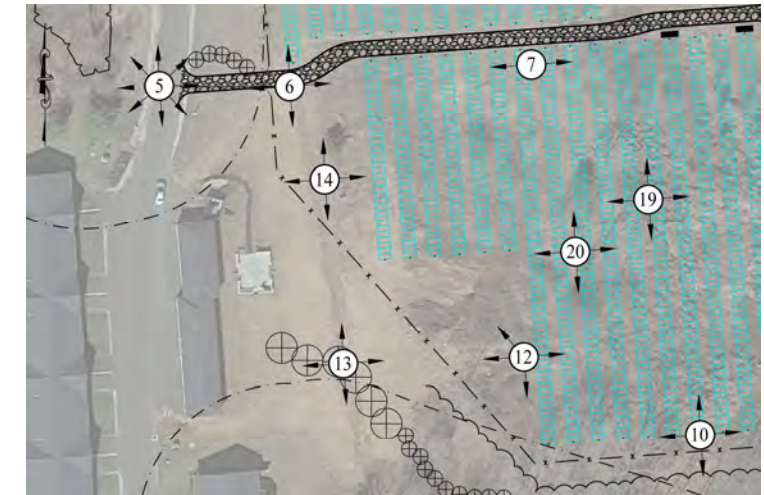


Approximate Location
of Proposed Chain
Link Double Swing-
Gate

Approximate Location
of Proposed Gravel
Road Driveway
Entrance

Photo 5: Looking East





On-Site Garage

Light Pole & Structure
to be Maintained

Photo 5: Looking Southeast

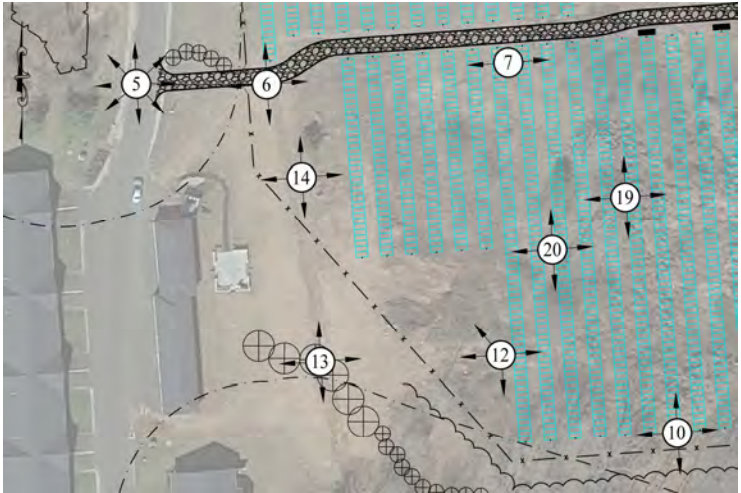


Photo 5: Looking South



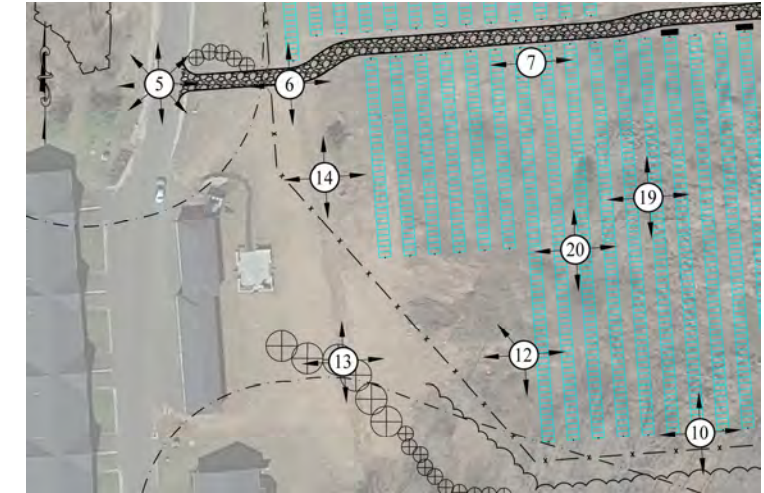


Photo 5: Looking Southwest



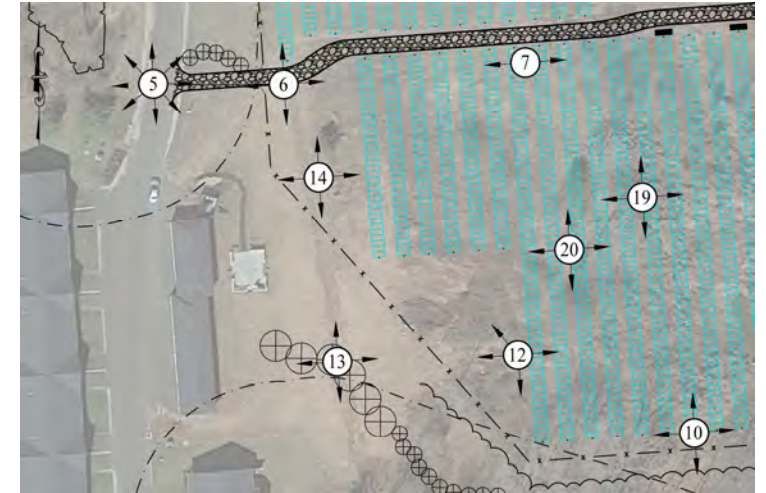
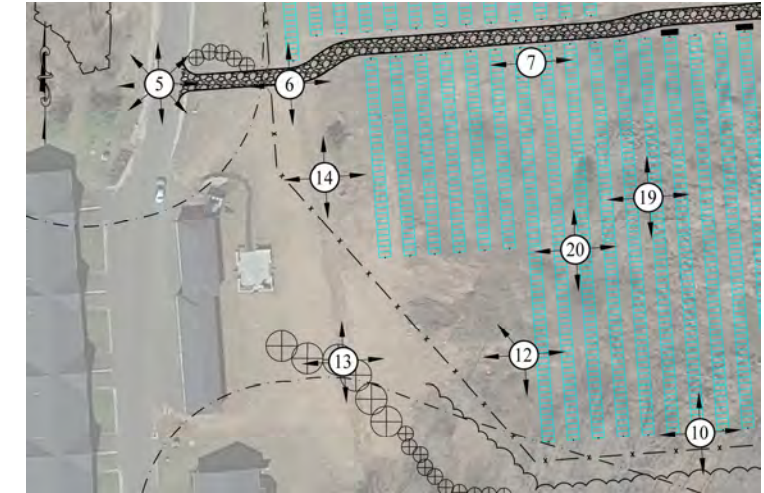


Photo 5: Looking West



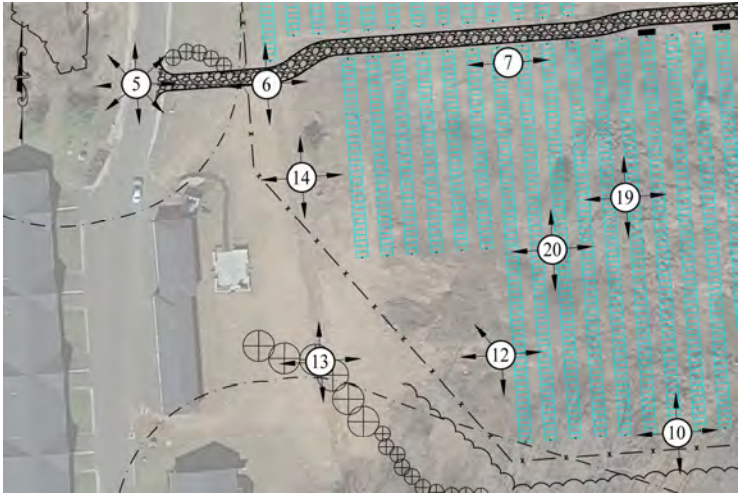


Neighboring
Properties

Approximate Location
of Wetlands

Photo 5: Looking Northwest

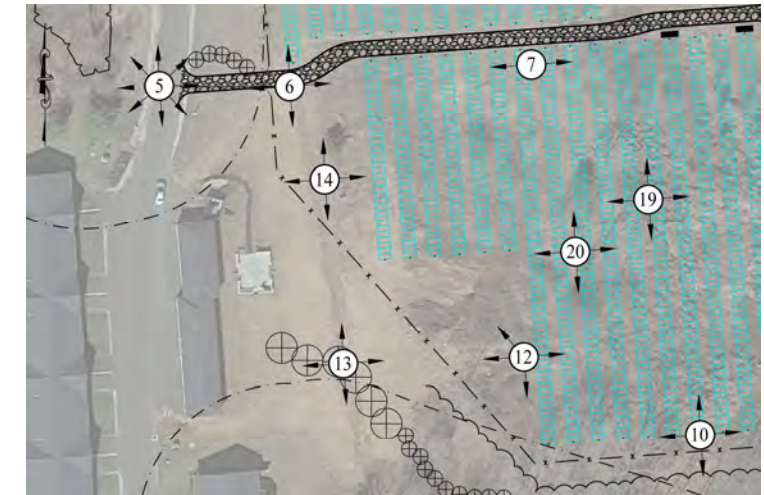




Neighboring
Properties

Photo 6: Looking North

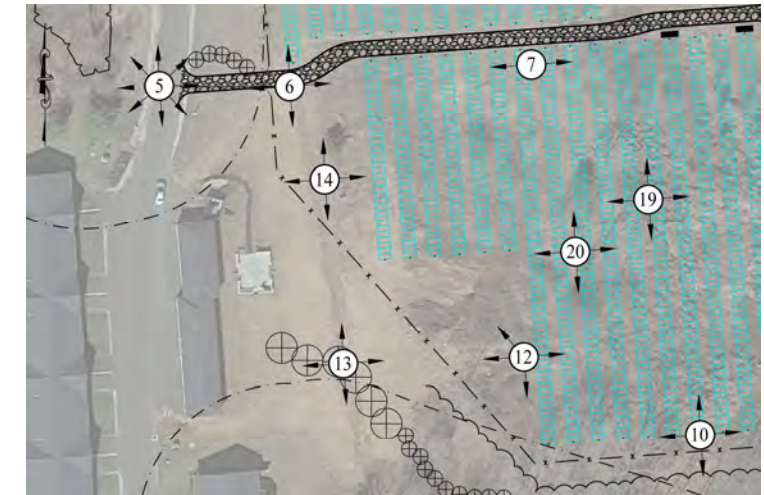




Approximate Location
of Proposed Gravel
Road

Photo 6: Looking East

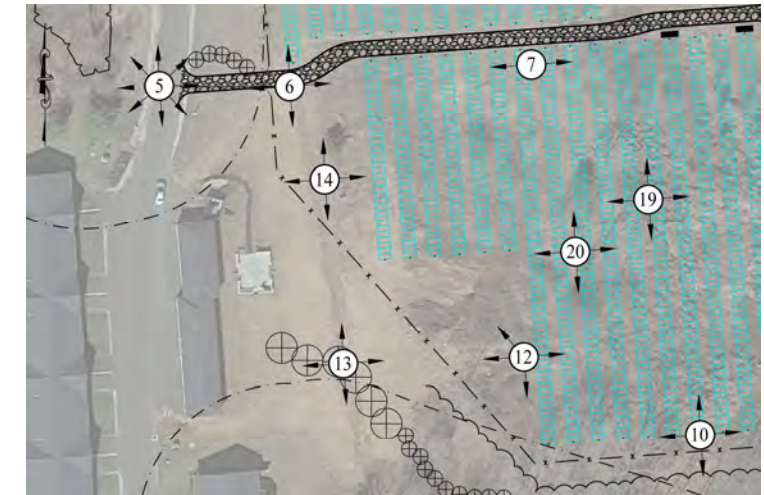




Approximate Location
of Proposed Chain
Link Fence

Photo 6: Looking South





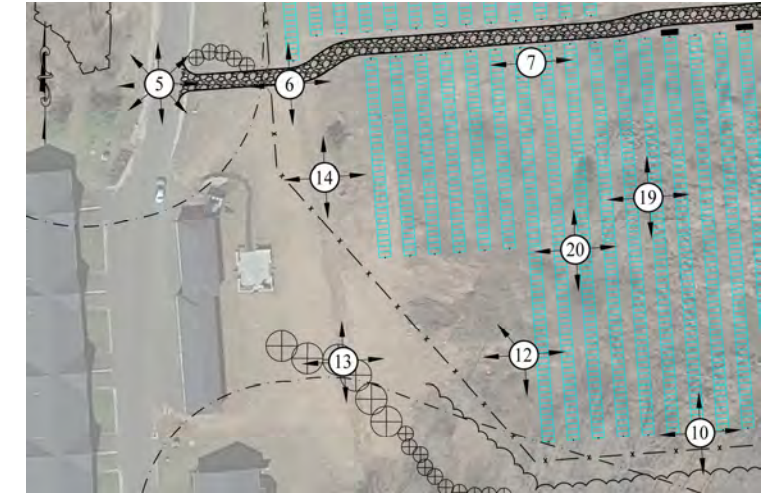
Approximate Location of Proposed Evergreen Tree Buffer

Approximate Location of Proposed Gravel Road Driveway Entrance

Approximate Location of Proposed Chain Link Double Swing-Gate

Photo 6: Looking West

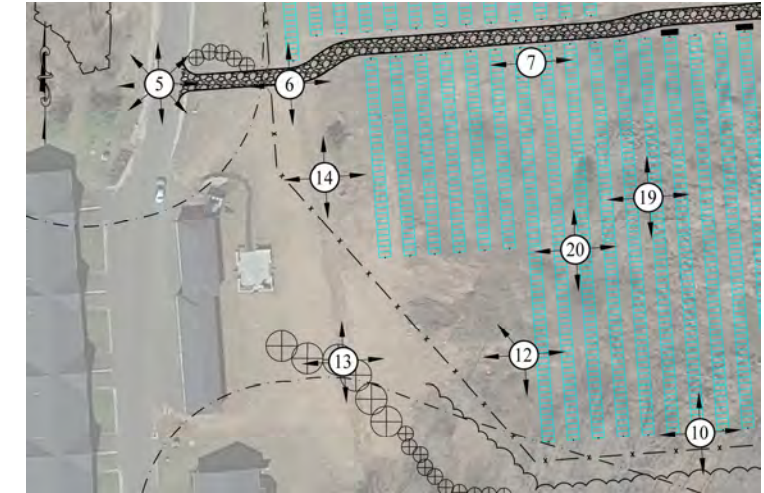




Approximate Location
of Proposed Gravel
Road

Photo 7: Looking East

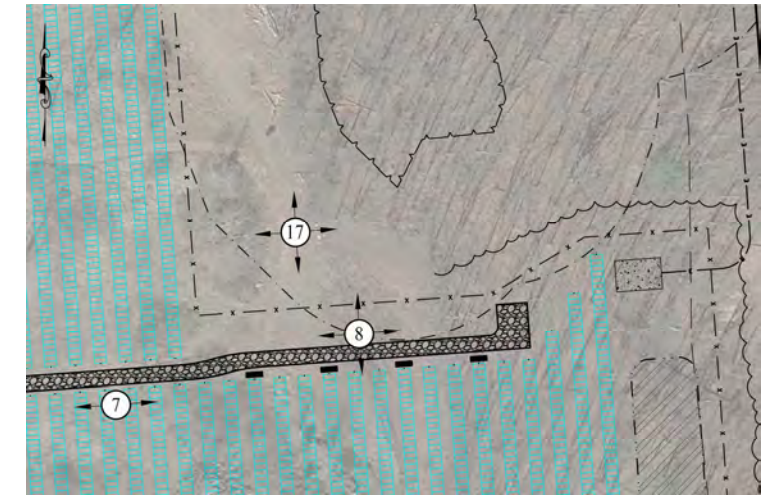




Approximate Location
of Proposed Gravel
Road

Photo 7: Looking West



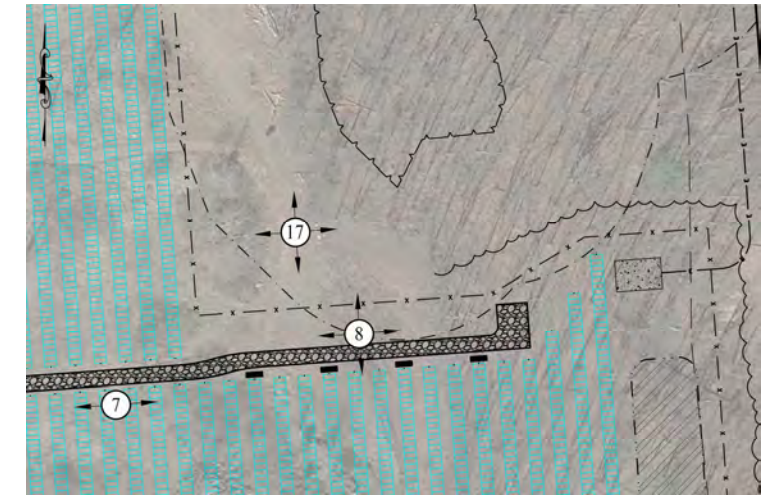


Approximate Location
of Wetlands

Approximate Location
of Proposed Chain
Link Fence

Photo 8: Looking North





Approximate Location
of Proposed Detention
Basin

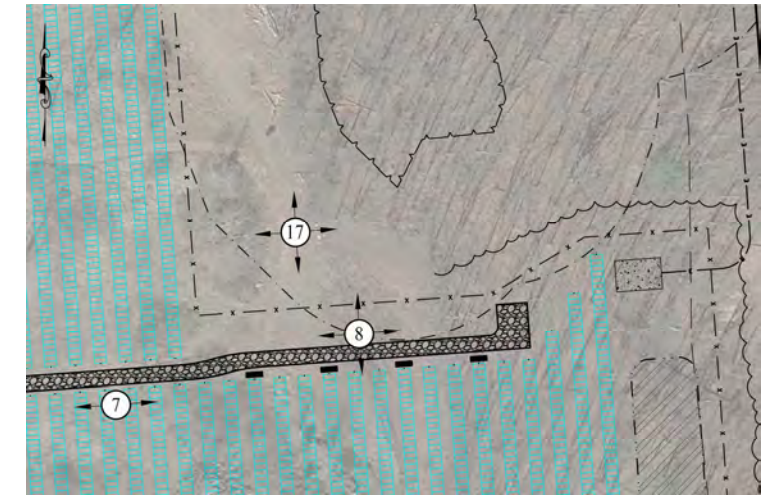
Approximate Location of
Proposed Concrete Pad

Neighboring Property

Approximate Location
of Proposed Gravel
Road

Photo 8: Looking East





Approximate Location
of Proposed Gravel
Road

Photo 8: Looking South





Approximate Location
of Proposed Gravel
Road

Photo 8: Looking West





Photo 9: Looking North

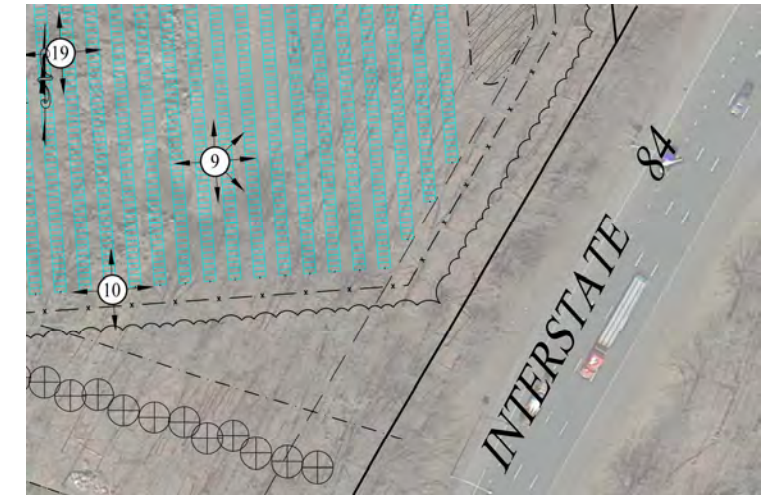




Approximate Location
of Proposed Detention
Basin

Photo 9: Looking Northeast





Approximate Location
of Proposed Edge of
Detention Basin

4" Standpipe

Photo 9: Looking East





4" Standpipe

Photo 9: Looking Southeast





Photo 9: Looking South





Photo 9: Looking West





Photo 10: Looking North





Photo 10: Looking East





Approximate Location
of Proposed
Evergreen Tree Buffer

Approximate Location
of Proposed Chain
Link Fence

Photo 10: Looking South





Photo 10: Looking West



Remote Field Review

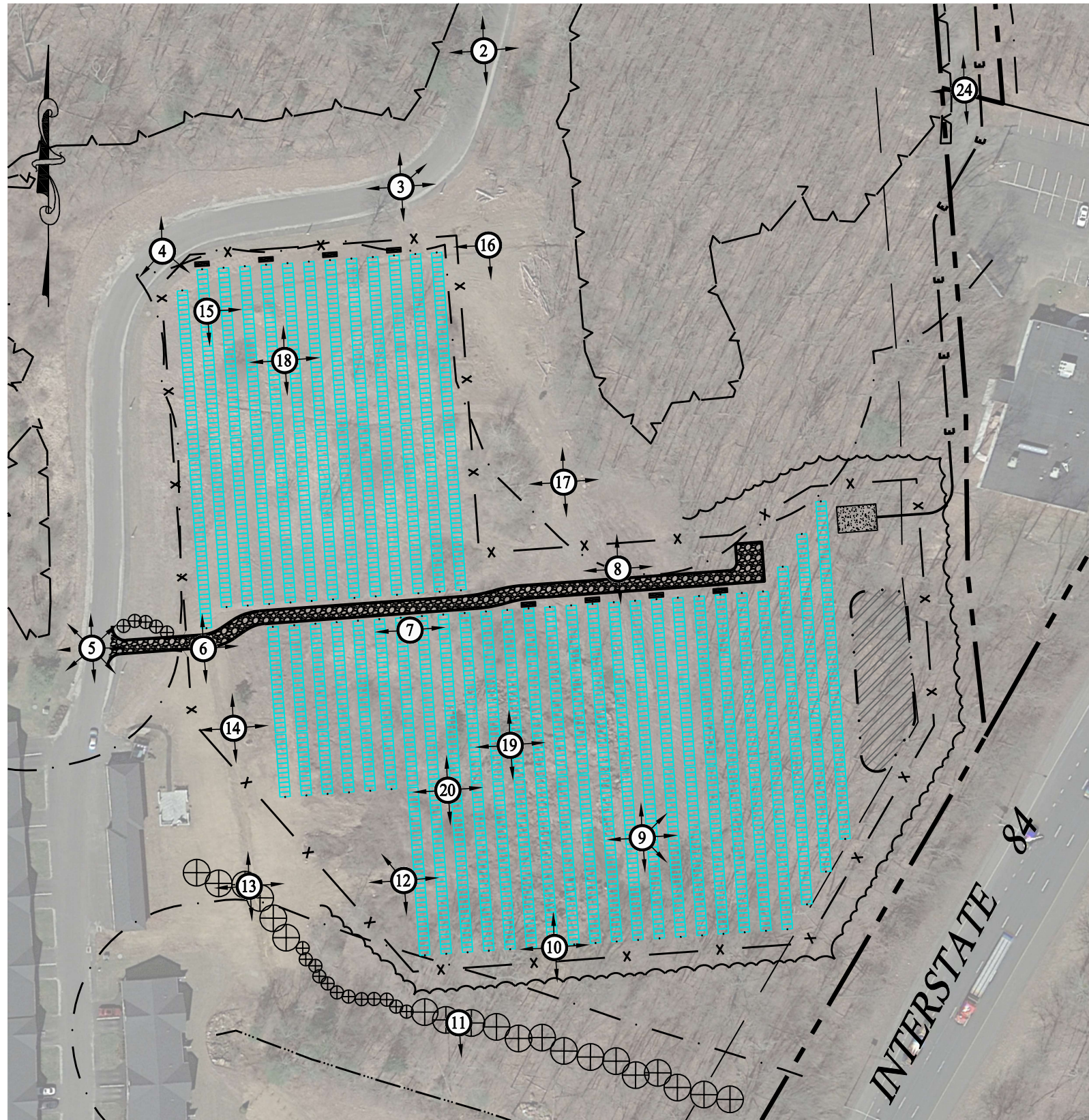


Proposed Solar Energy Facility
37 Hunters Lane
Southington, Connecticut
Document 2 of 2

Prepared For:
TRITEC Americas, LLC

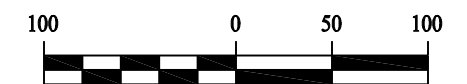
Prepared By:
Solli Engineering, LLC
501 Main Street #2A
Monroe, CT 06468





LEGEND

| | |
|--|------------------------------------|
| | PROPERTY LINE |
| | RIGHT-OF-WAY LINE |
| | ADJOINING LOT LINE |
| | BUILDING SETBACK |
| | WETLAND LIMIT |
| | UPLAND REVIEW AREA - 100 FT BUFFER |
| | EDGE OF ACCESS DRIVE |
| | STORMWATER BASIN AREA |
| | CHAIN LINK FENCE |
| | TRINA 540W SOLAR MODULES |
| | ELECTRIC CONDUIT |
| | LIMIT OF TREE CLEARING |
| | PHOTO POINT LOCATION |



| Rev. #: | Date | Description |
|---------|------|-------------|
| | | |
| | | |
| | | |

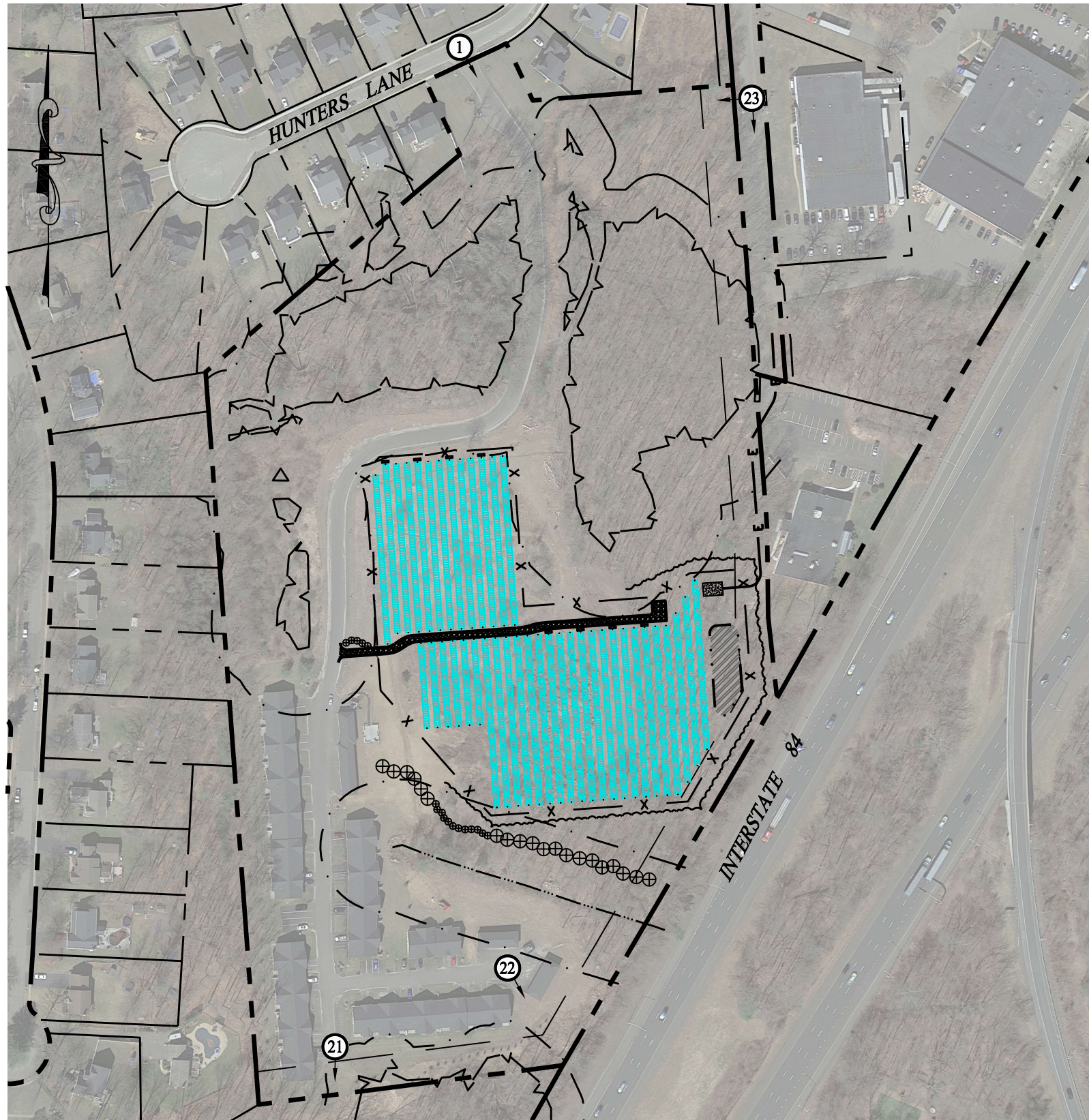
SOLLI
ENGINEERING
501 Main Street, Monroe, CT 06468
T: (203) 880-5455 | F: (203) 880-9695

Drawn By: SFU
Checked By: KMS
Project #: 22108701
Plan Date: 11/17/23
Scale: 1" = 100'

Project: **PROPOSED SOLAR PHOTOVOLTAIC ARRAY**
37 HUNTERS LANE
SOUTHINGTON, CONNECTICUT

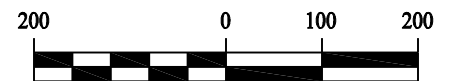
Sheet Title: **REMOTE FIELD REVIEW**

SHEET #: **FIG.1**



LEGEND

| | |
|--|------------------------------------|
| | PROPERTY LINE |
| | RIGHT-OF-WAY LINE |
| | ADJOINING LOT LINE |
| | BUILDING SETBACK |
| | WETLAND LIMIT |
| | UPLAND REVIEW AREA - 100 FT BUFFER |
| | EDGE OF ACCESS DRIVE |
| | STORMWATER BASIN AREA |
| | CHAIN LINK FENCE |
| | TRINA 540W SOLAR MODULES |
| | ELECTRIC CONDUIT |
| | LIMIT OF TREE CLEARING |
| | PHOTO POINT LOCATION |



| Rev. #: | Date | Description |
|---------|------|-------------|
| | | |
| | | |
| | | |

SOLLI
ENGINEERING
501 Main Street, Monroe, CT 06468
T: (203) 880-5455 | F: (203) 880-9695

Drawn By: SFU
Checked By: KMS
Project #: 22108701
Plan Date: 11/17/23
Scale: 1" = 200'

Project: **PROPOSED SOLAR PHOTOVOLTAIC ARRAY**
37 HUNTERS LANE
SOUTHINGTON, CONNECTICUT

Sheet Title: **REMOTE FIELD REVIEW**

SHEET #: **FIG.2**



Intermittent
Watercourse

Photo 11: Looking South



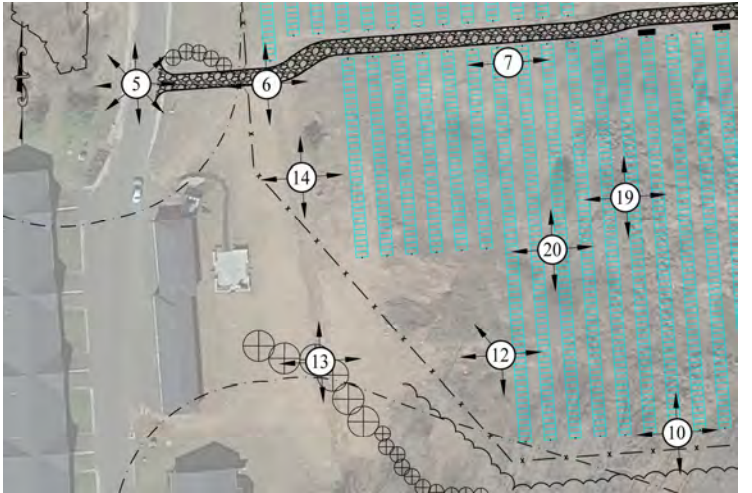


Photo 12: Looking Northwest



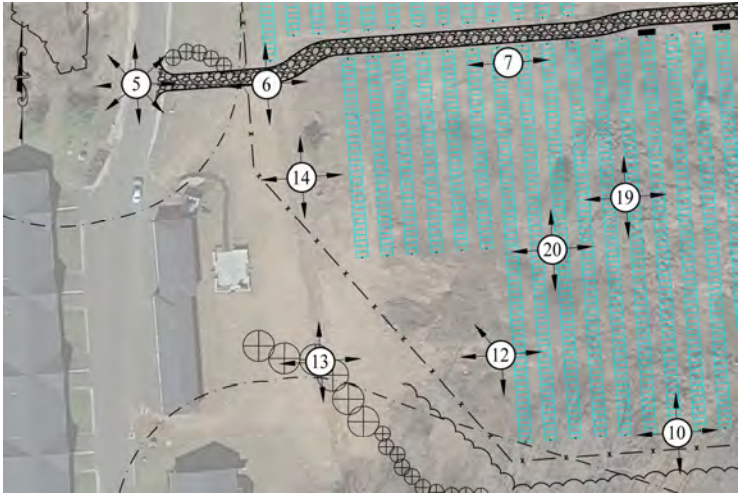


Photo 12: Looking East

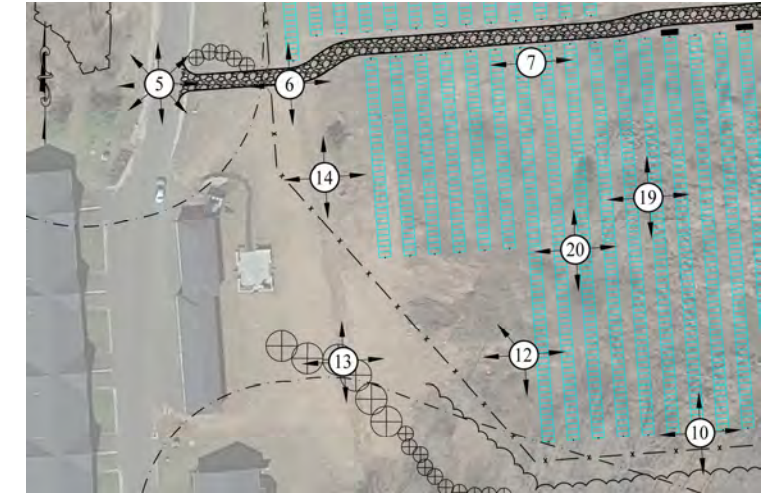
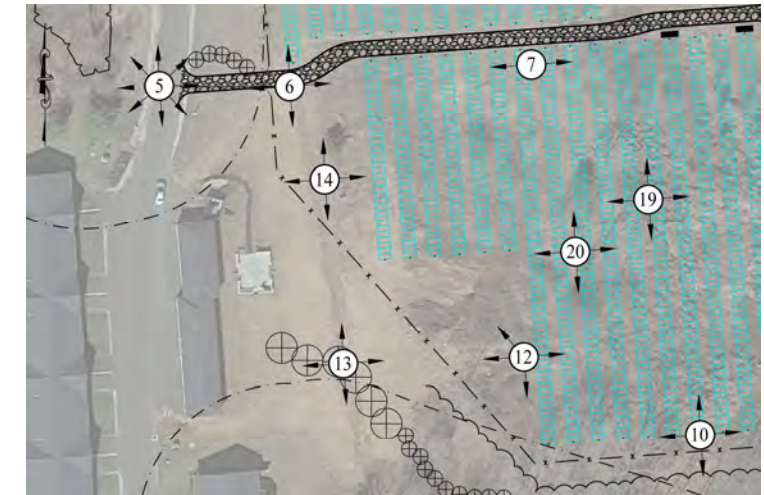


Photo 12: Looking South

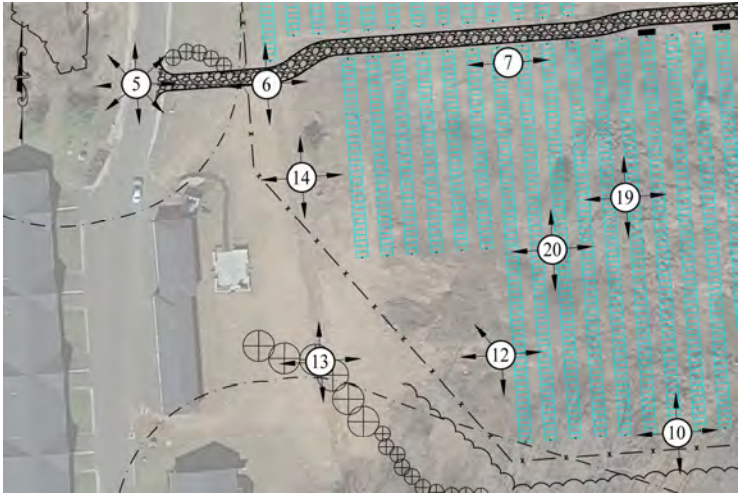




Approximate Location
of Proposed
Evergreen Tree Buffer

Photo 12: Looking West





Neighboring
Properties

Photo 13: Looking North



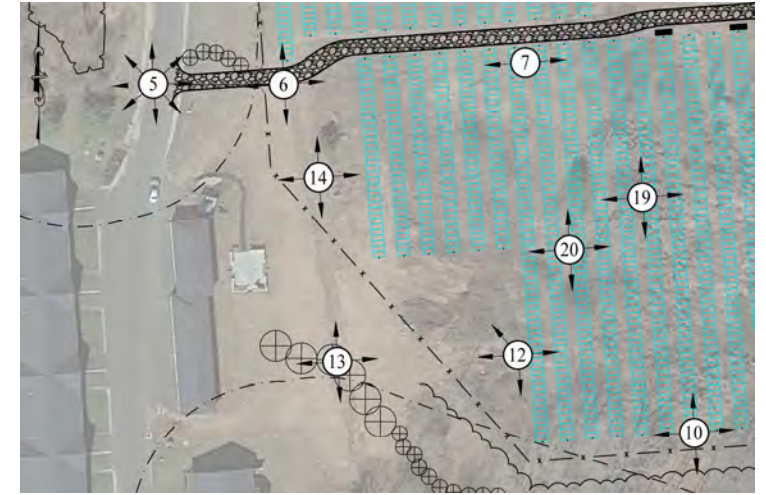
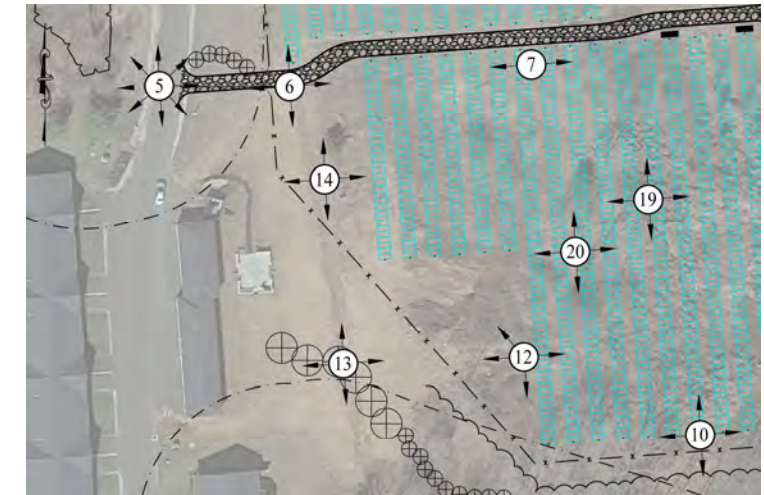


Photo 13: Looking East

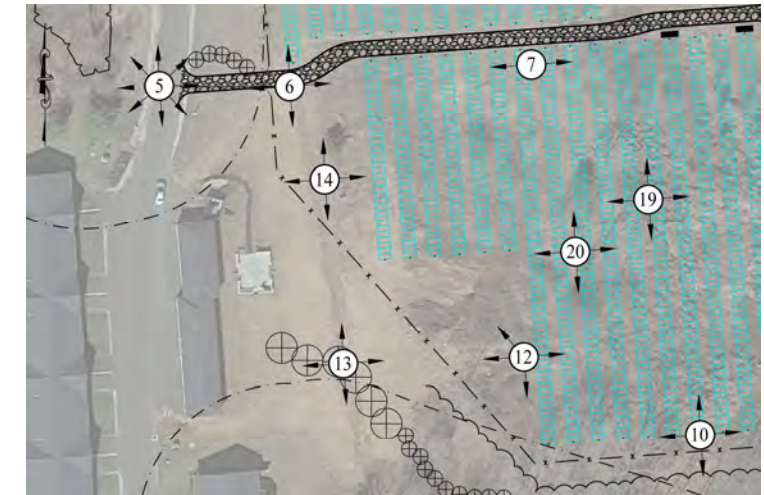




Approximate Location
of Proposed
Evergreen Tree Buffer

Photo 13: Looking South

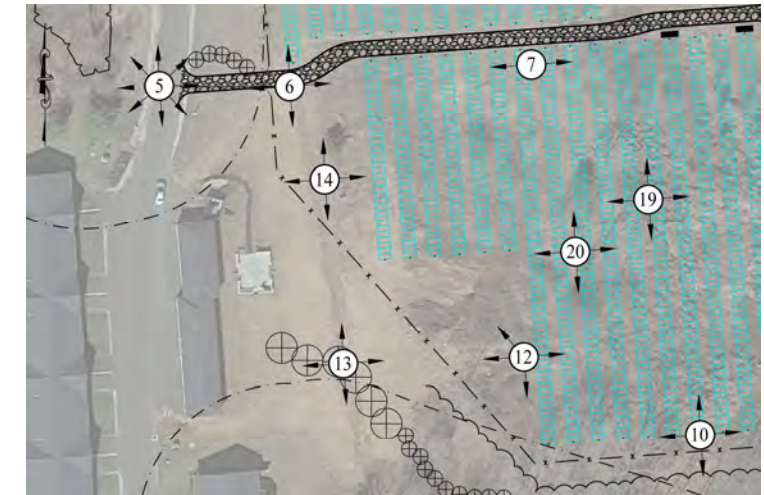




Approximate Location
of Proposed
Evergreen Tree Buffer

Photo 13: Looking West





Neighboring
Properties

Photo 14: Looking North



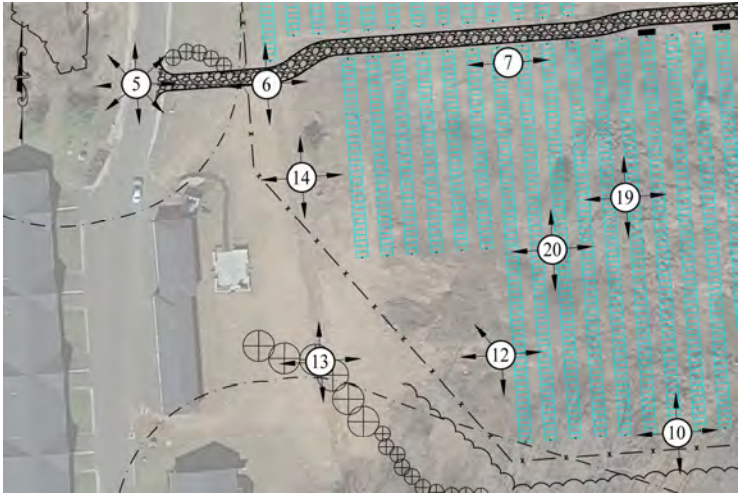
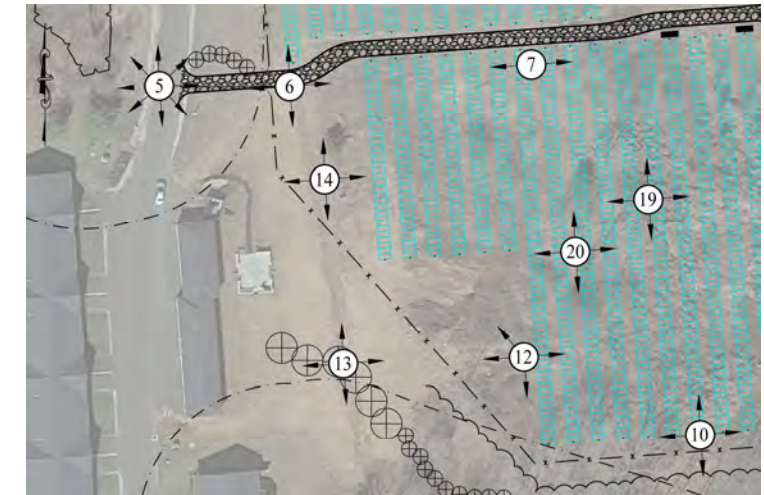


Photo 14: Looking East



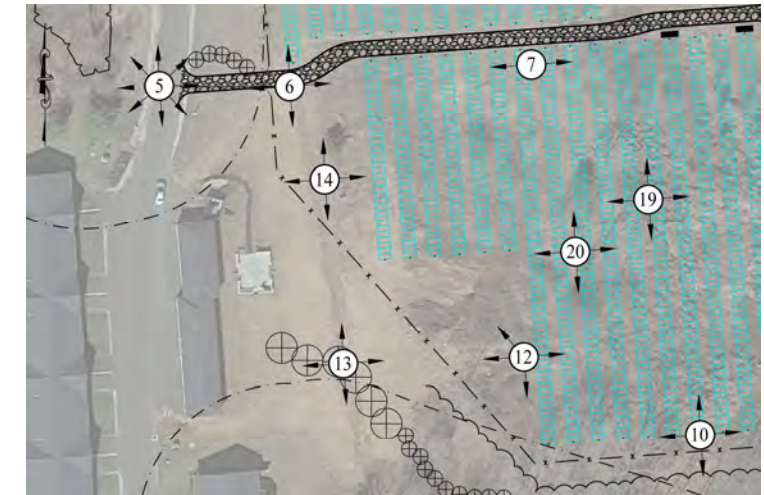


Approximate Location
of Proposed
Evergreen Tree Buffer

Approximate Location
of Proposed Chain
Link Fence

Photo 14: Looking South

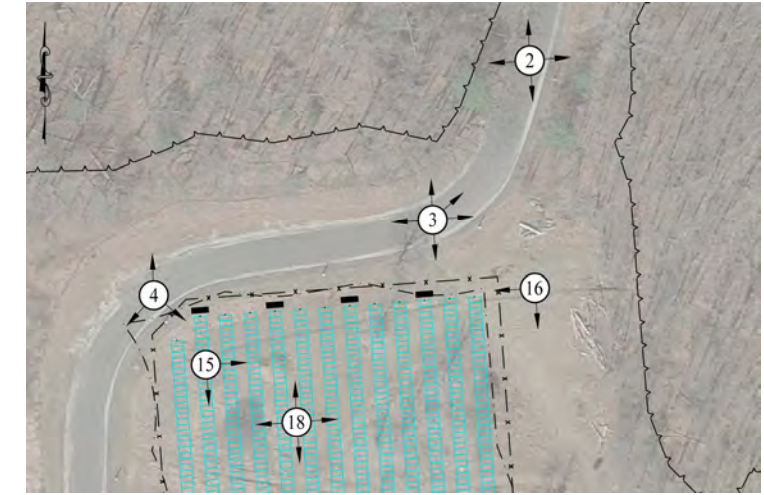




Approximate Location
of Proposed Chain
Link Fence

Photo 14: Looking West

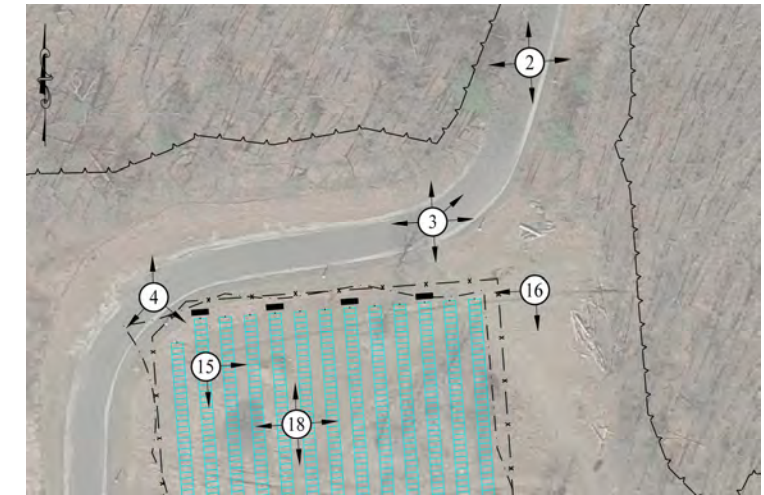




Beehive

Approximate Location
of Proposed Chain
Link Fence

Photo 15: Looking East

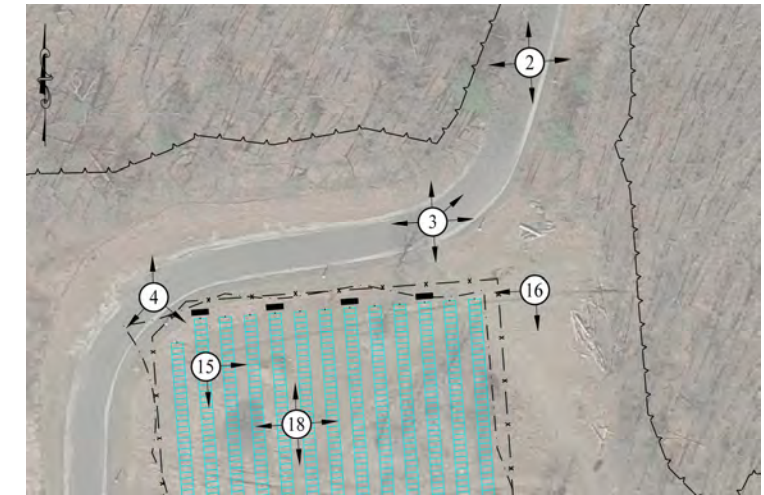


Approximate Location
of Proposed Evergreen
Tree Buffer

Approximate Location
of Proposed Chain
Link Fence

Photo 15: Looking South

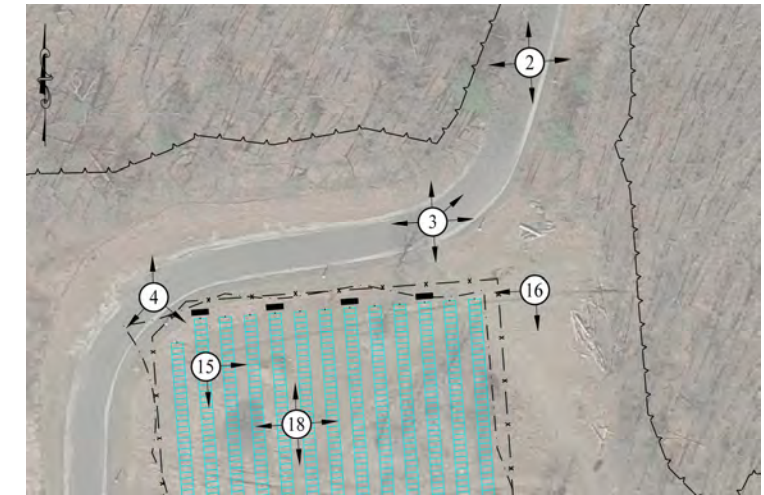




Approximate Location
of Proposed Chain
Link Fence

Photo 16: Looking South





Beehive

Approximate Location
of Proposed Chain
Link Fence

Photo 16: Looking West



Approximate Location
of Wetlands

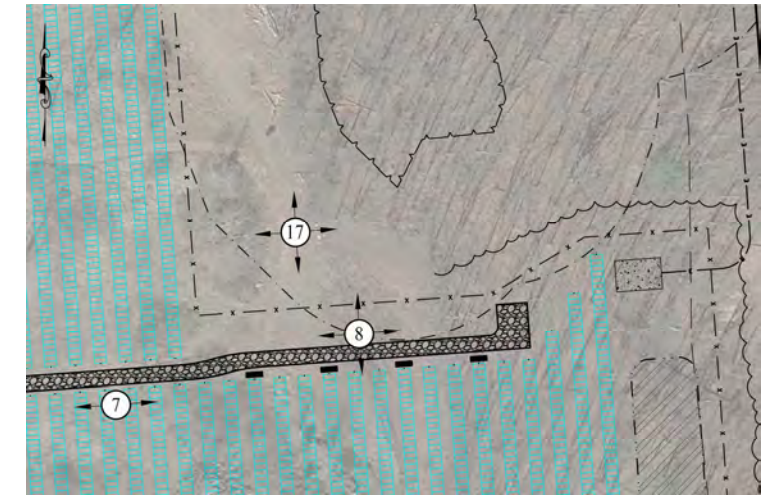
Photo 17: Looking North





Photo 17: Looking East





Approximate Location
of Proposed Gravel
Road

Photo 17: Looking South



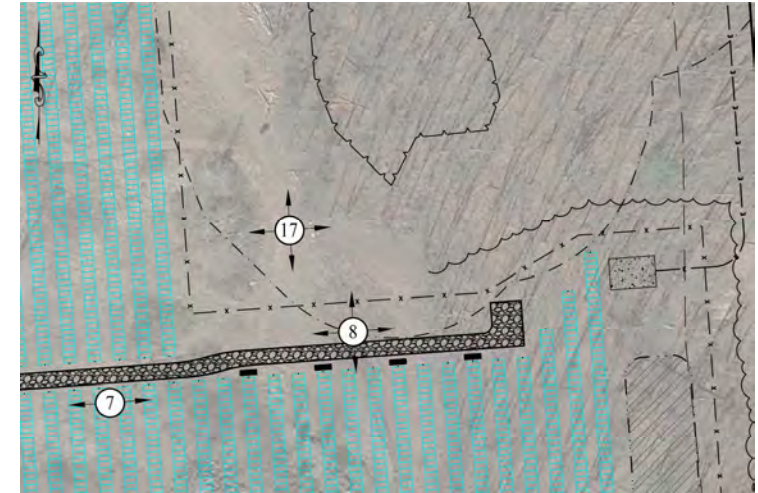


Photo 17: Looking West



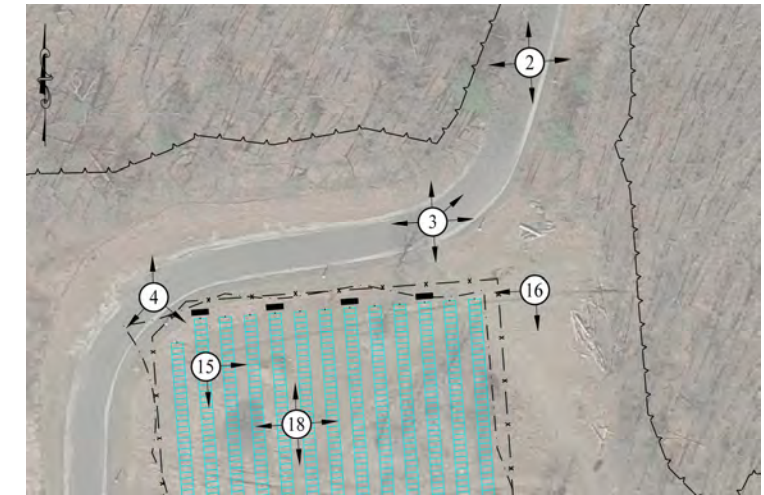


Photo 18: Looking North



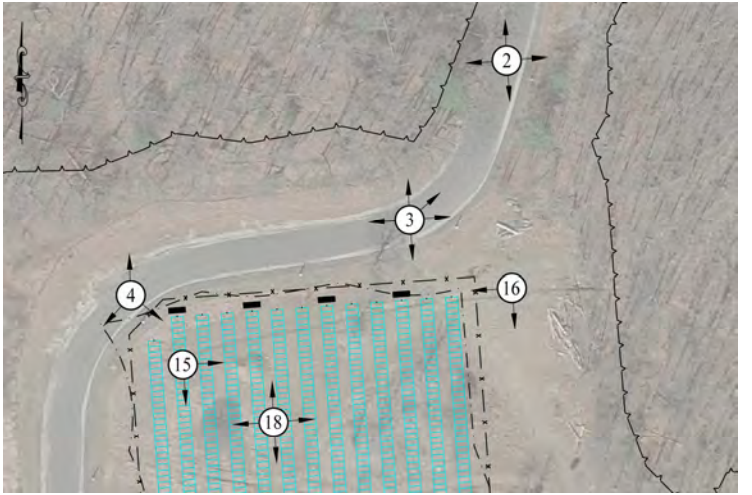


Photo 18: Looking East



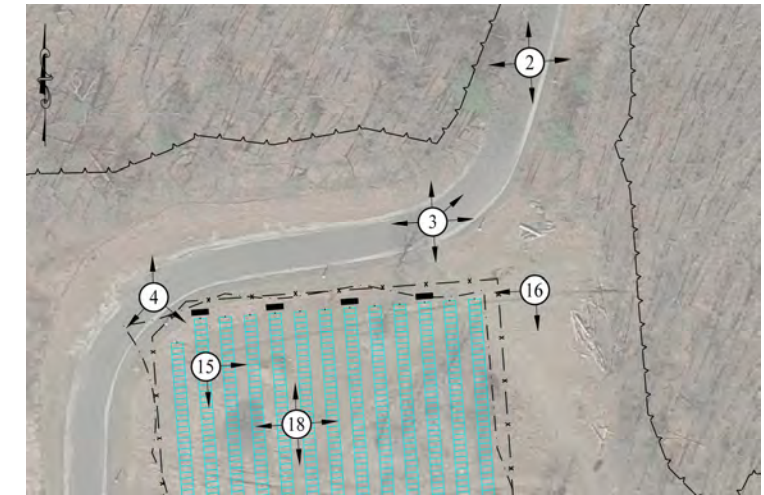


Photo 18: Looking South



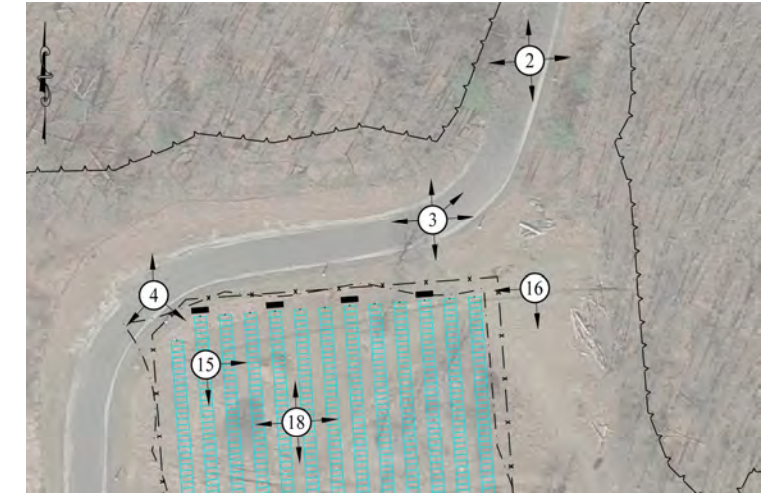


Photo 18: Looking West



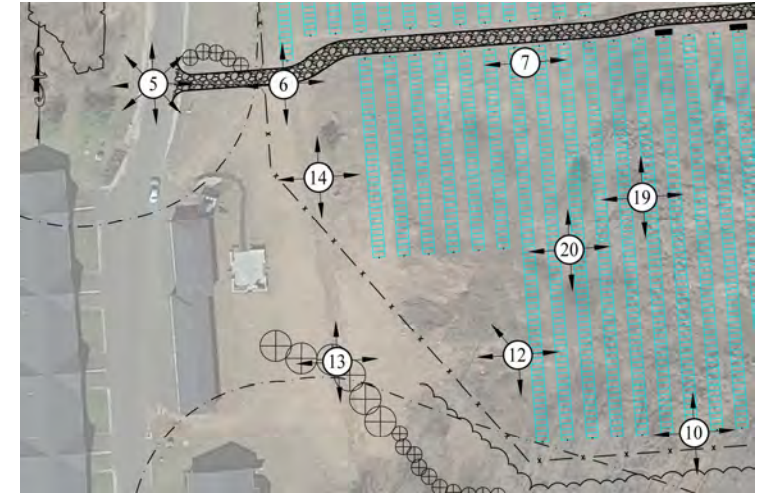


Photo 19: Looking North



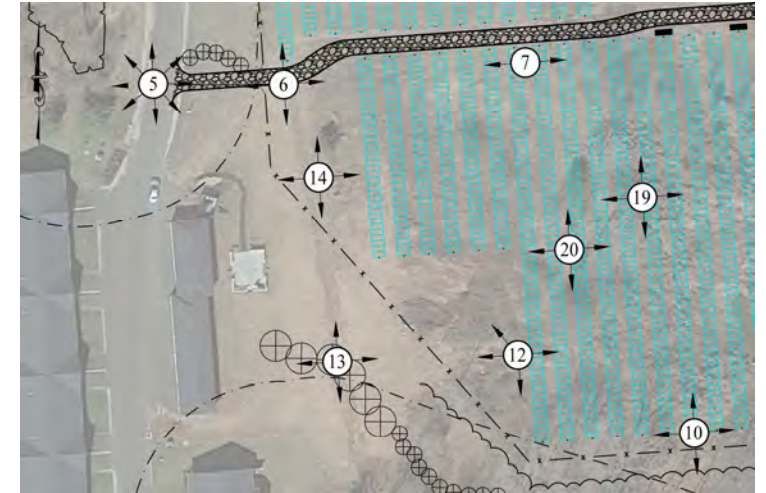


Photo 19: Looking East



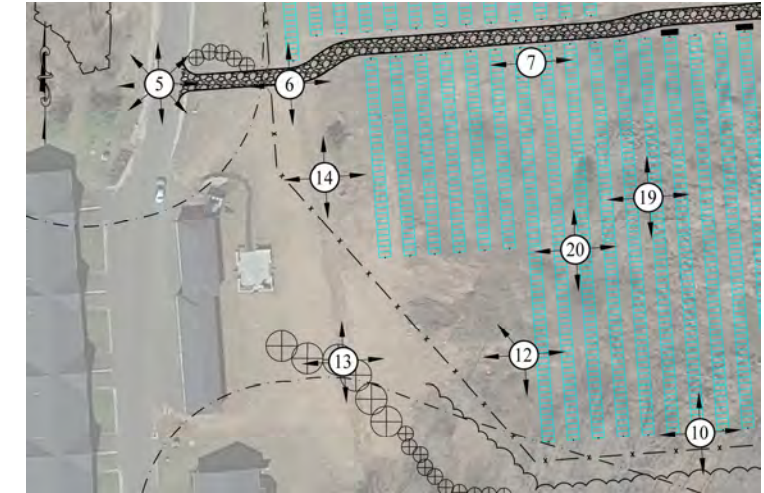


Photo 19: Looking South



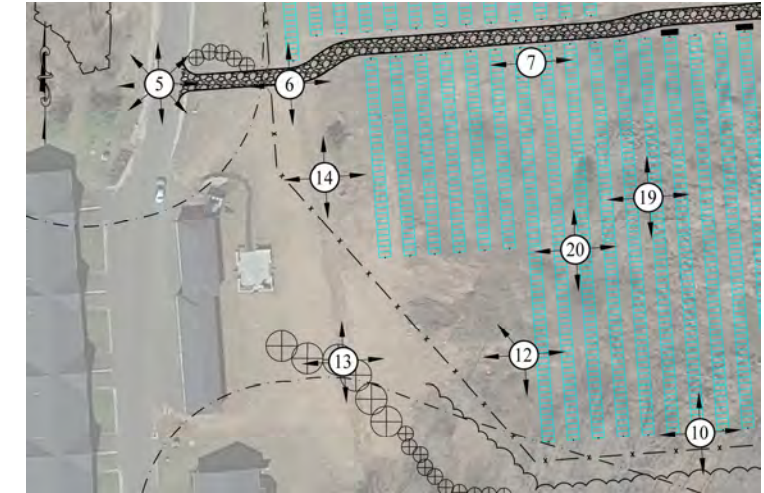


Photo 19: Looking West



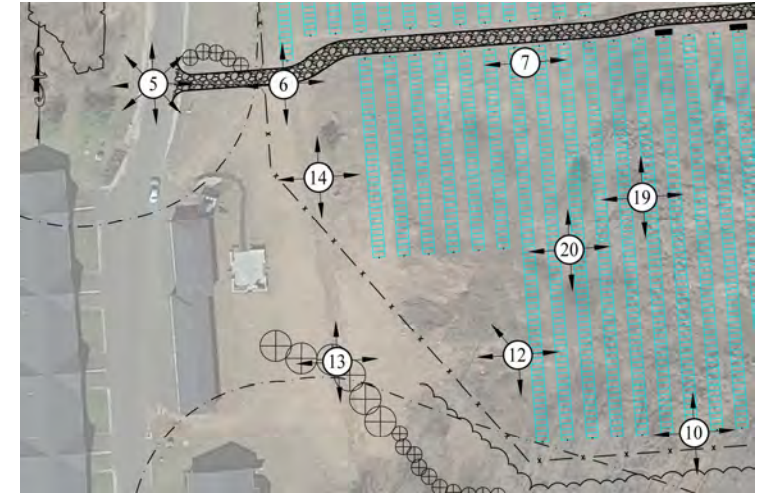


Photo 20: Looking North



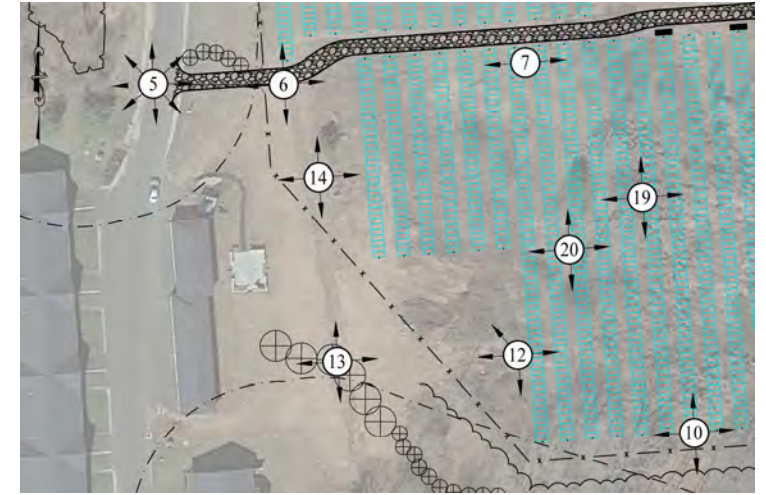


Photo 20: Looking East



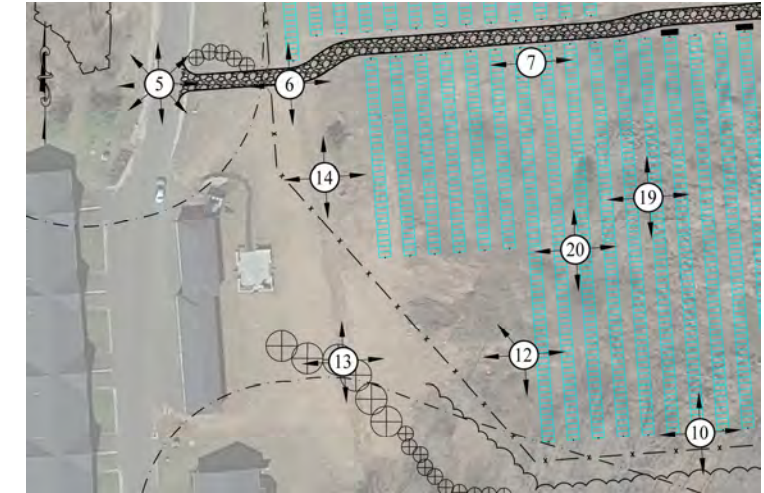


Photo 20: Looking South



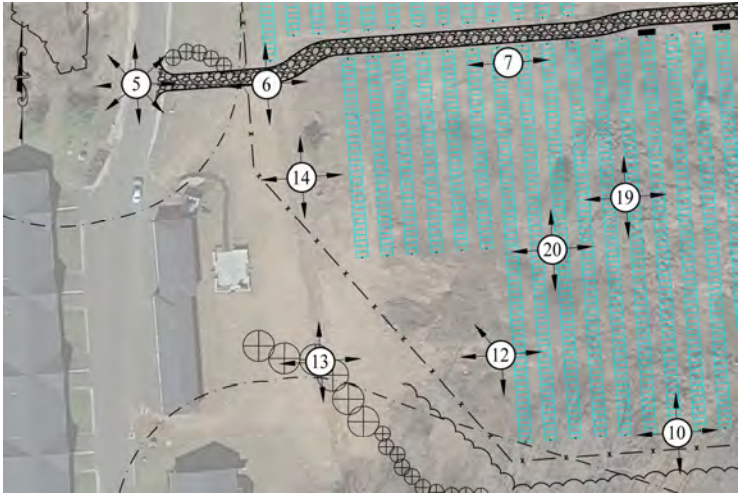


Photo 20: Looking West





Approximate Location
of Wetlands

Photo 21: Looking South





Photo 22: Looking South





Photo 23: Looking South



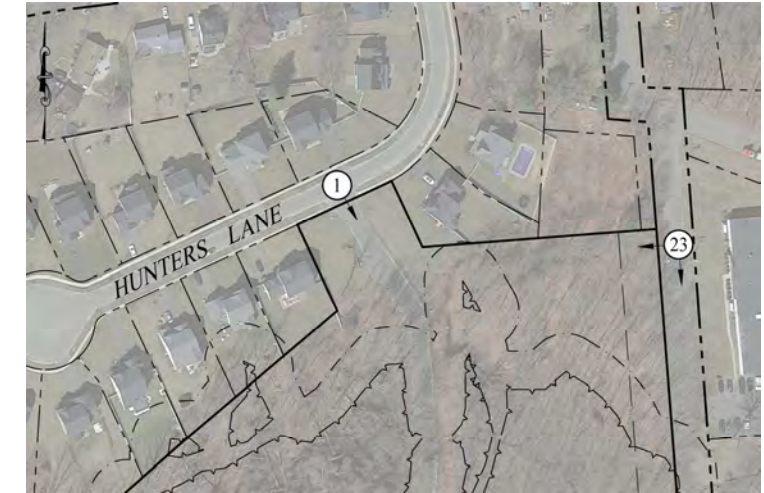


Photo 23: Looking West





Photo 24: Looking North





Photo 24: Looking South





Approximate Location
of Wetlands

Photo 24: Looking West

