

# EXHIBIT B-1

## Blue Ridge Drive Plans

Petition No. 1609

RS/DS

27/74

15392  
15398

N/F CASE BROTHERS INC.

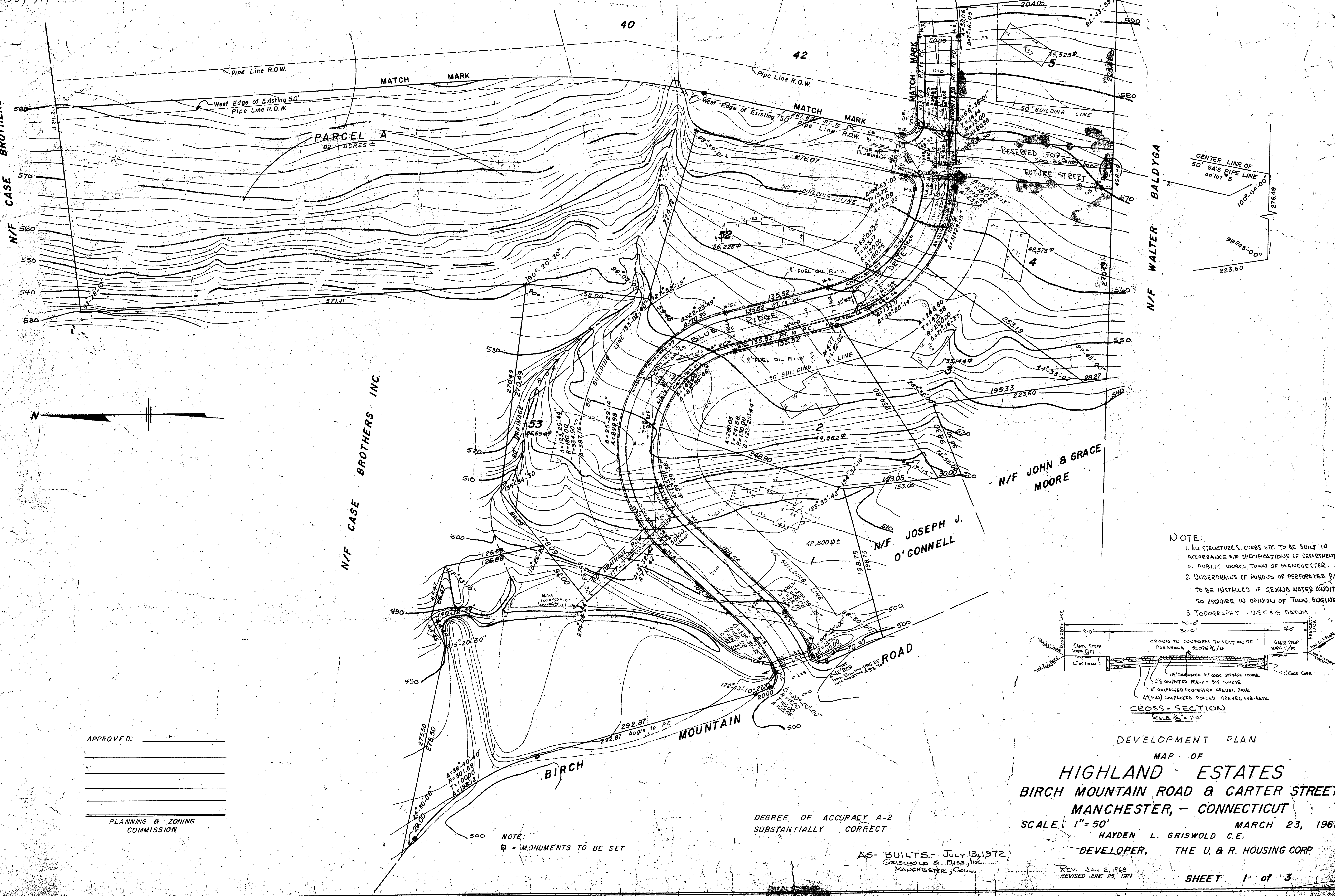
N/F CASE BROTHERS INC.

N/F WALTER BALDYGA

N/F JOHN & GRACE MOORE

N/F JOSEPH J. O'CONNELL

N/F CASE BROTHERS INC.

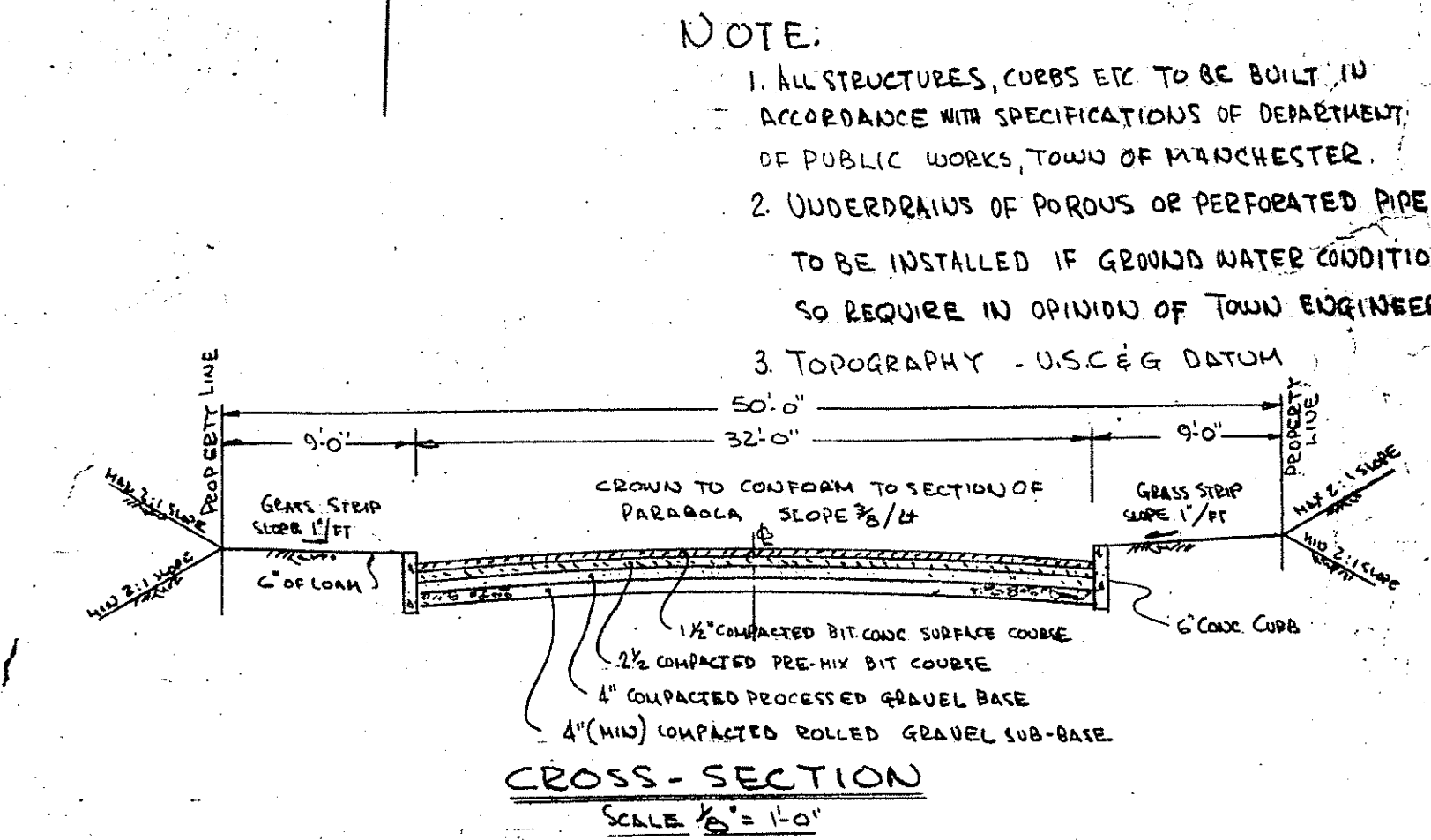


APPROVED: \_\_\_\_\_  
\_\_\_\_\_  
\_\_\_\_\_  
PLANNING & ZONING COMMISSION

NOTE:  
⊕ = MONUMENTS TO BE SET

DEGREE OF ACCURACY A-2  
SUBSTANTIALLY CORRECT

AS-BUILTS - JULY 13, 1972  
GRISWOLD & FISS, INC.  
MANCHESTER, CONN.



DEVELOPMENT PLAN  
MAP OF  
**HIGHLAND ESTATES**  
BIRCH MOUNTAIN ROAD & CARTER STREET  
MANCHESTER, - CONNECTICUT  
SCALE: 1" = 50'  
MARCH 23, 1967  
HAYDEN L. GRISWOLD C.E.  
DEVELOPER, THE U. & R. HOUSING CORP.

REV. JAN 2, 1968  
REVISED JUNE 25, 1971

SHEET 1 of 3



82/91



N/F CASE BROTHERS INC.

N/F CASE BROS. INC.

APPROVED: \_\_\_\_\_

PLANNING & ZONING COMMISSION

NOTE:  
 1. UNDERDRAINS, IMPERFOROUS OR PERFORATED PIPE  
 TO BE INSTALLED IN GROUND WATER CONDITIONS  
 SO REQUIRE OPINION OF TOWN ENGINEER

NOTE:  
 MONUMENTS TO BE SET

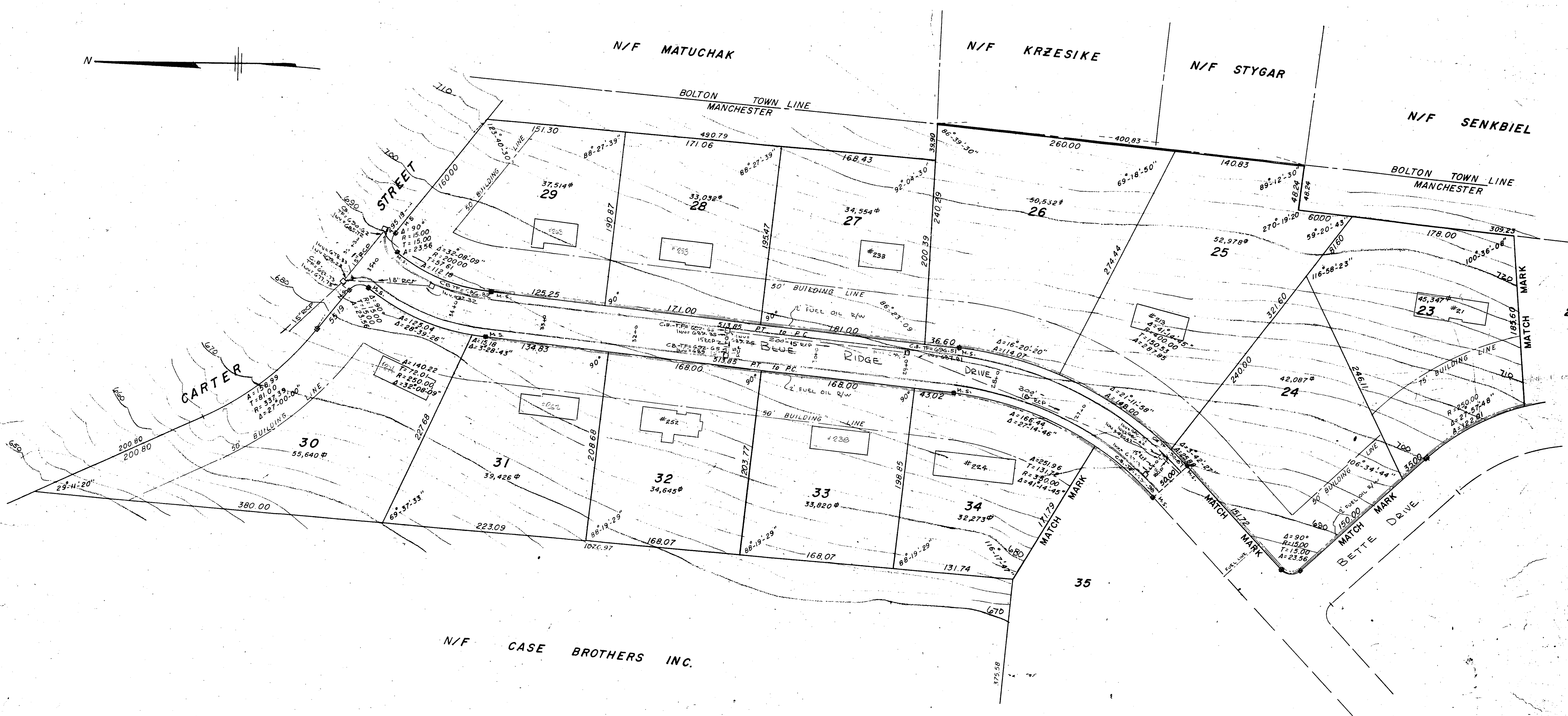
PARCEL A  
 8.2 ACRES ±

DEGREE OF ACCURACY A-2  
 SUBSTANTIALLY CORRECT

AS-BUILTS - JULY 13, 1972  
 GRISWOLD & FUSCO, INC.  
 MANCHESTER, CONN.

5 DEVELOPMENT PLAN  
 MAP OF  
**HIGHLAND ESTATES**  
 BIRCH MOUNTAIN ROAD & CARTER STREET  
 MANCHESTER, - CONNECTICUT  
 SCALE 1" = 50'  
 MARCH 23, 1968  
 HAYDEN L. GRISWOLD C.E.  
 DEVELOPER, THE U. & R. HOUSING CORP.  
 Revised 12-28-67 REVISED JAN 2, 1968 **SHEET 2 OF 2**





APPROVED \_\_\_\_\_

\_\_\_\_\_  
\_\_\_\_\_  
\_\_\_\_\_

PLANNING & ZONING  
COMMISSION

NOTE:  
1.  $\Phi$  = MONUMENTS TO BE SET  
2. UNDERDRAINS OF POROUS OR PERFORATED PIPE  
TO BE INSTALLED IF GROUND WATER CONDITIONS  
SO REQUIRE IN OPINION OF TOWN ENGINEER

DEGREE OF ACCURACY A-2  
SUBSTANTIALLY CORRECT

AS-BUILTS - JULY 13 1972  
GRISWOLD & FUSS, INC.  
MANCHESTER, CONN.

DEVELOPMENT PLAN  
MAP OF  
**HIGHLAND ESTATES**  
BIRCH MOUNTAIN ROAD & CARTER STREET  
MANCHESTER, - CONNECTICUT  
SCALE: 1" = 50'  
MARCH 23, 1967  
HAYDEN L. GRISWOLD C.E.  
DEVELOPER, THE U. & R. HOUSING CORP.

REV. JAN 2, 1968

SHEET 3 of 3