

**EXHIBIT G**

Photographic Project Site Documentation

# Remote Field Review

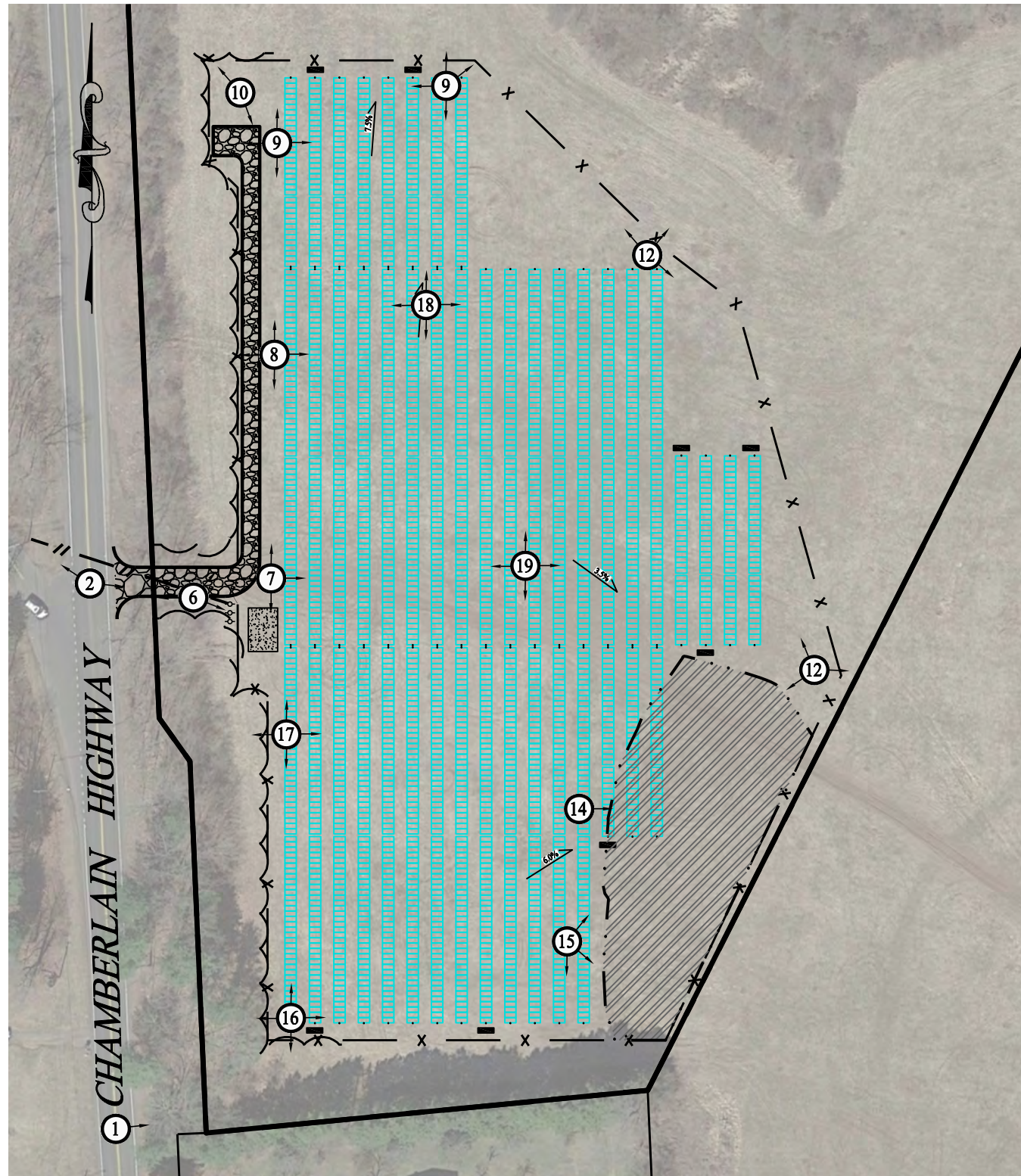


Proposed Solar Energy Facility  
0 Chamberlain Highway  
Berlin, Connecticut

Prepared For:  
TRITEC Americas, LLC

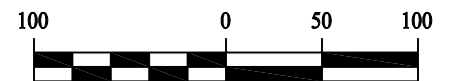
Prepared By:  
Solli Engineering, LLC  
501 Main Street #2A  
Monroe, CT 06468





### LEGEND

	PROPERTY LINE
	BUILDING SETBACK
	WETLAND LIMIT
	UPLAND REVIEW AREA - 100 FT BUFFER
	EDGE OF FARM ROAD/ACCESS DRIVE
	STORMWATER BASIN AREA
	CHAIN LINK FENCE
	TRINA 540W SOLAR MODULES
	UTILITY POLE
	OVERHEAD ELECTRIC LINE
	ELECTRIC CONDUIT
	LIMIT OF TREE CLEARING
	PHOTO POINT LOCATION



Rev. #:	Date	Description

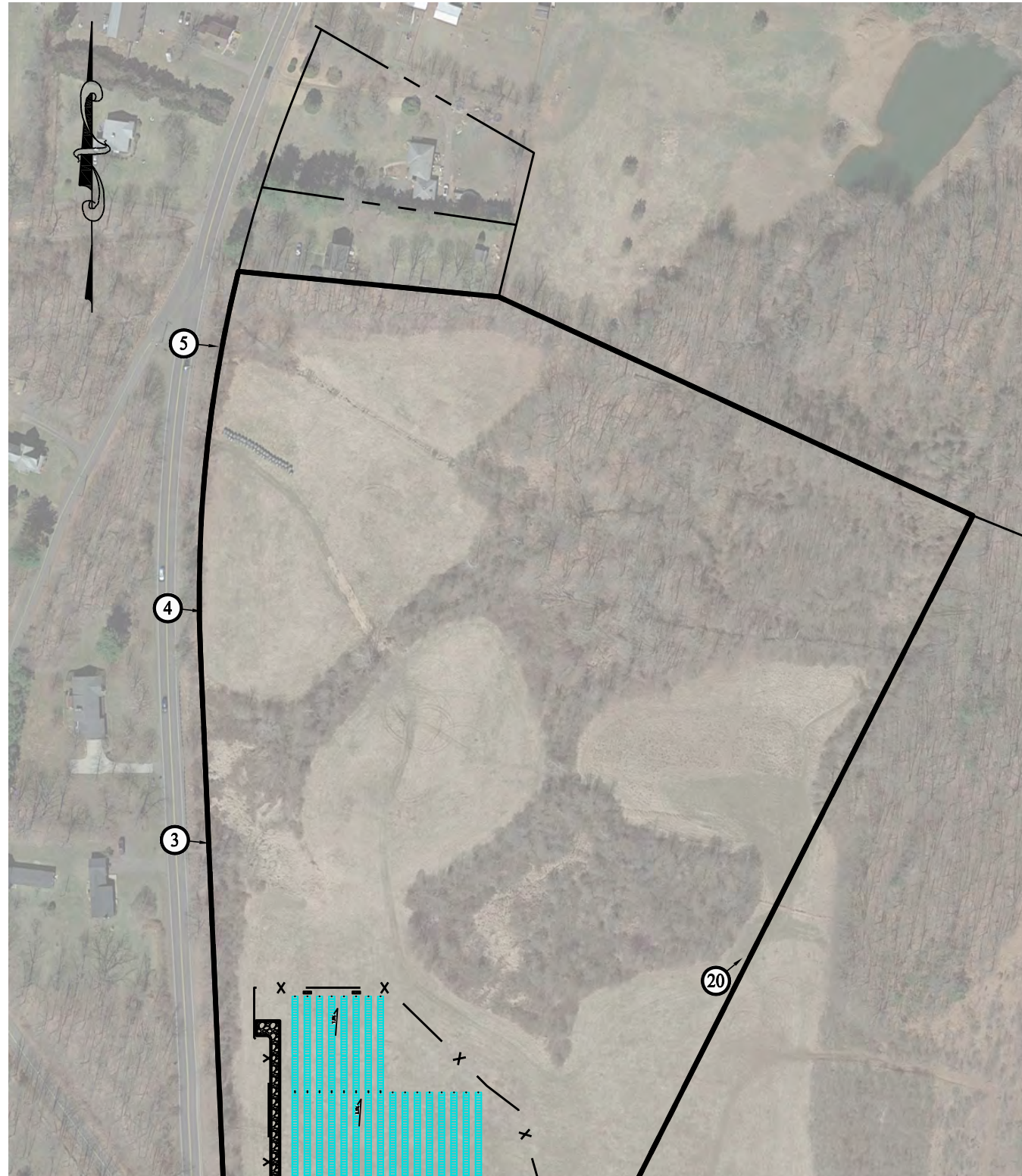
**SOLLI ENGINEERING**  
 501 Main Street, Monroe, CT 06468  
 T: (203) 880-5455 | F: (203) 880-9695

Drawn By: SFU  
 Checked By: KMS  
 Project #: 23100201  
 Plan Date: 10/03/23  
 Scale: 1" = 100'

Project: **PROPOSED SOLAR PHOTOVOLTAIC ARRAY**  
 0 CHAMBERLAIN HIGHWAY  
 BERLIN, CONNECTICUT

Sheet Title: **REMOTE FIELD REVIEW**

SHEET #: **FIG.1**



## LEGEND

	PROPERTY LINE
	BUILDING SETBACK
	WETLAND LIMIT
	UPLAND REVIEW AREA - 100 FT BUFFER
	EDGE OF FARM ROAD/ACCESS DRIVE
	STORMWATER BASIN AREA
	CHAIN LINK FENCE
	TRINA 540W SOLAR MODULES
	UTILITY POLE
	OVERHEAD ELECTRIC LINE
	ELECTRIC CONDUIT
	LIMIT OF TREE CLEARING
	PHOTO POINT LOCATION



Rev. #:	Date	Description

**SOLLI**  
ENGINEERING  
501 Main Street, Monroe, CT 06468  
T: (203) 880-5455 | F: (203) 880-9695

Drawn By: SFU  
Checked By: KMS  
Project #: 23100201  
Plan Date: 10/03/23  
Scale: 1" = 200'

Project: **PROPOSED SOLAR PHOTOVOLTAIC ARRAY**  
0 CHAMBERLAIN HIGHWAY  
BERLIN, CONNECTICUT

Sheet Title: **REMOTE FIELD REVIEW**

SHEET #: **FIG.2**

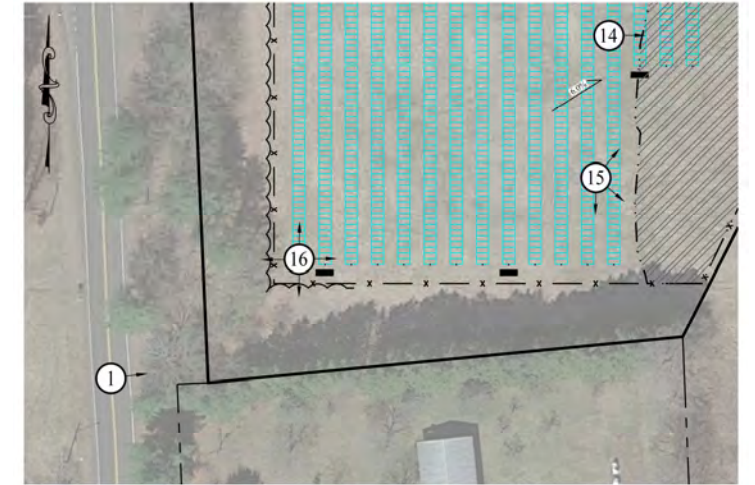
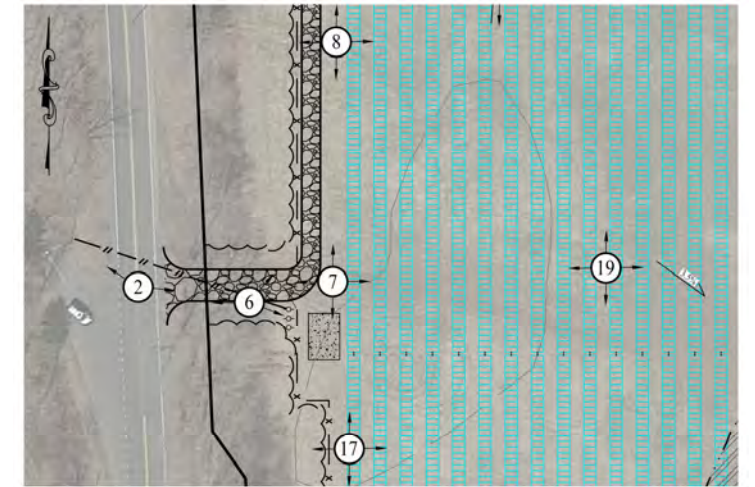


Photo 1: Chamberlain Highway looking East

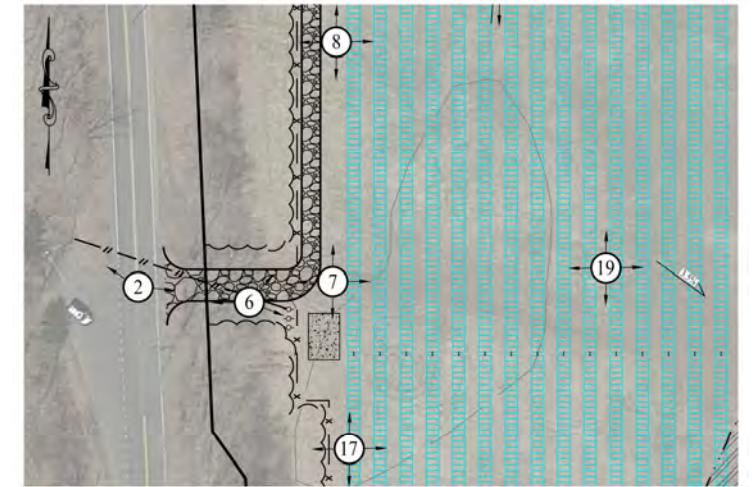




Proposed Gravel Road  
Access onto  
Chamberlain Highway

Photo 2: Chamberlain Highway looking East





Proposed  
Interconnection Point

Photo 2: Chamberlain Highway looking Northwest





Photo 3: Chamberlain Highway looking East





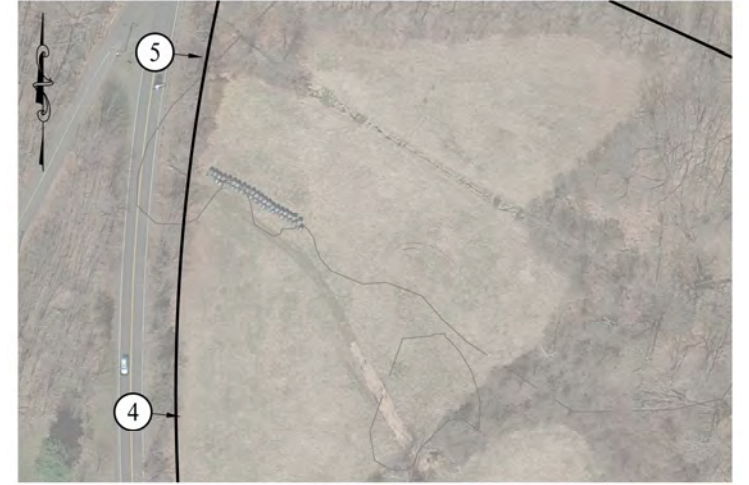


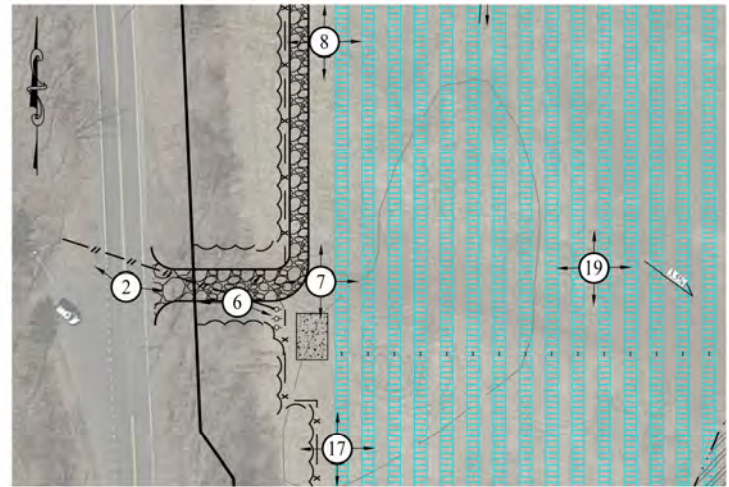
Photo 4: Chamberlain Highway looking East





Photo 5: Chamberlain Highway looking East

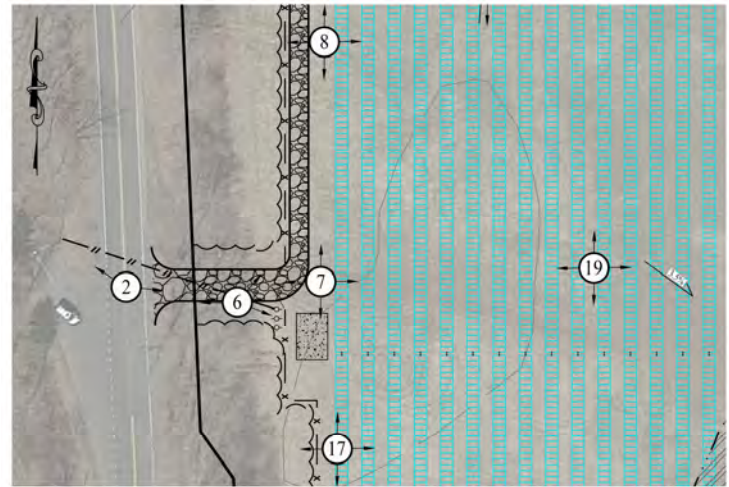




Proposed Gravel Road

Photo 6: Looking Northeast





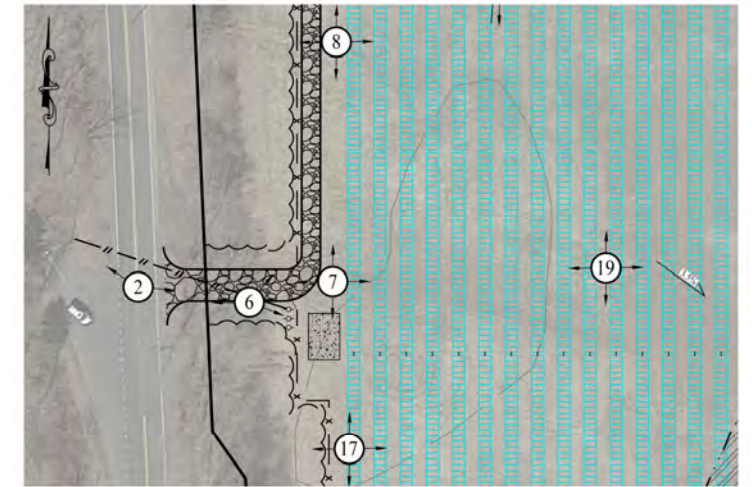
Proposed Concrete Pad Area

Proposed Utility Pole

Proposed Chain Link Fence

Photo 6: Looking East

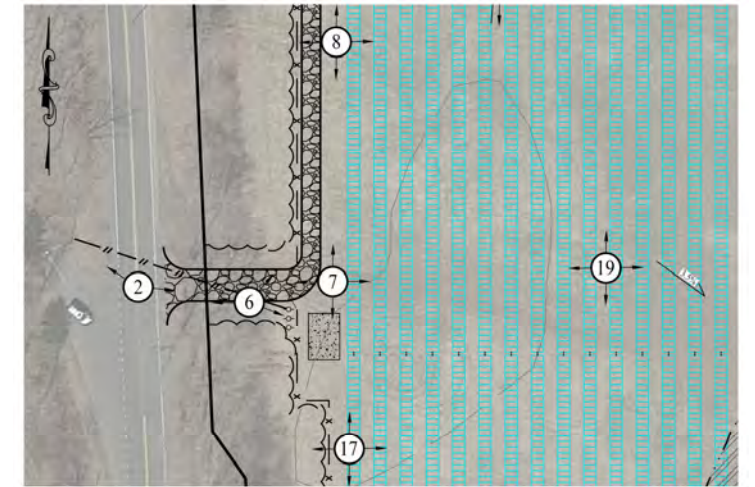




Proposed Gravel Access  
Drive onto Chamberlain  
Highway

Photo 6: Looking West





Proposed Gravel Road

Photo 7: Looking North



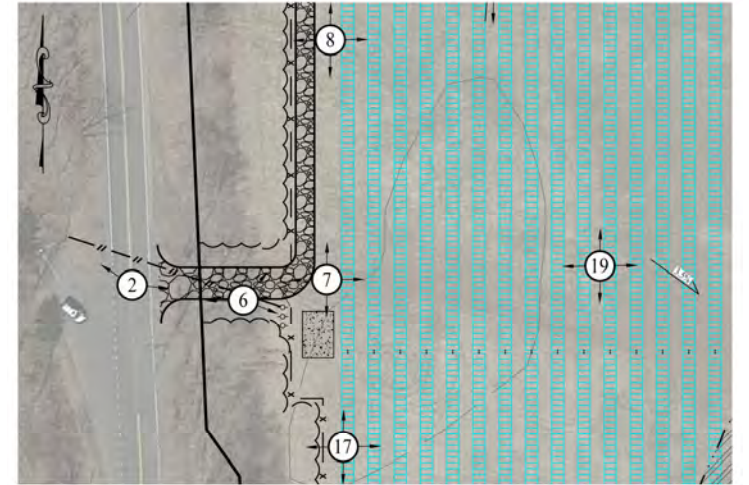
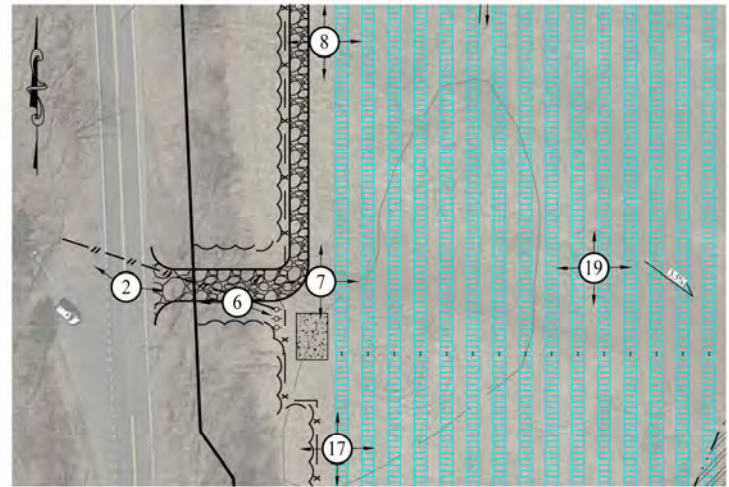


Photo 7: Looking East





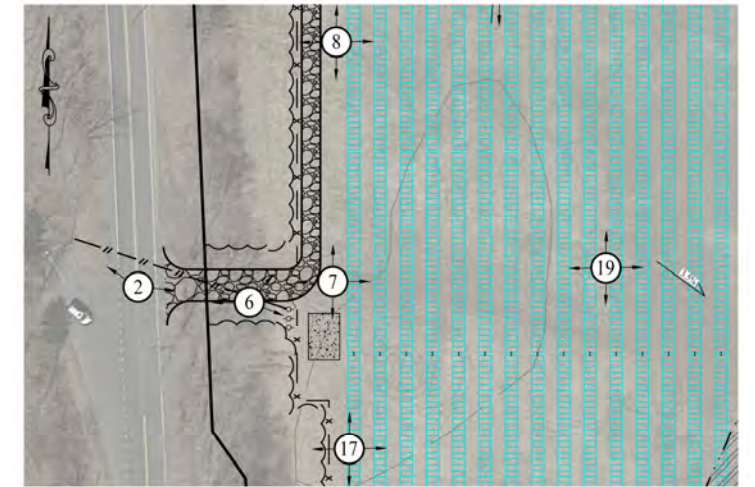
Proposed Utility Pole

Proposed Concrete Pad Area

Photo 7: Looking South







Proposed Gravel Access  
Drive onto Chamberlain  
Highway

Photo 7: Looking West



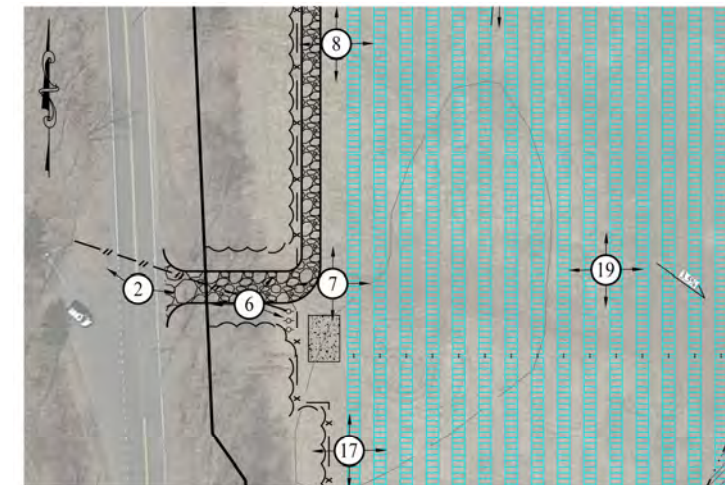


Photo 8: Looking North



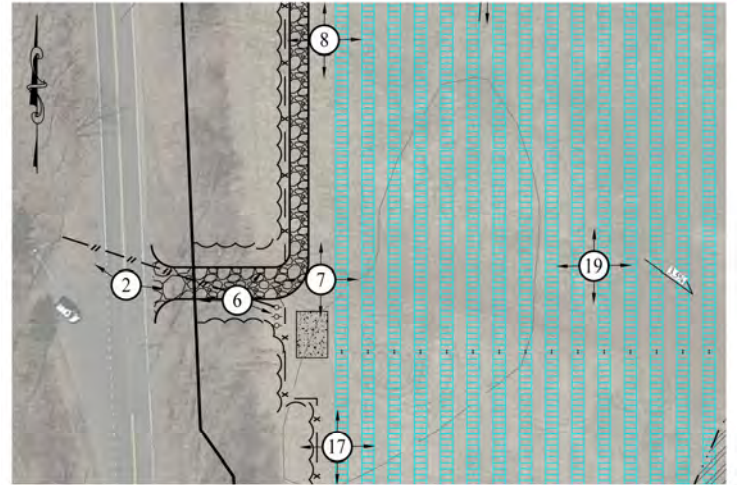
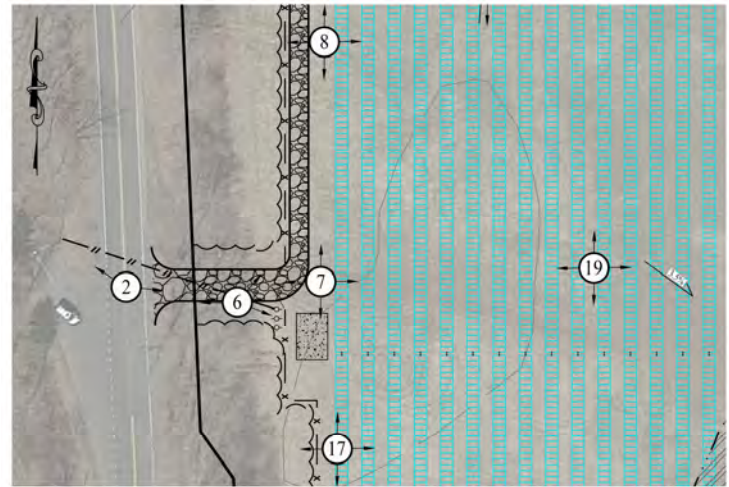


Photo 8: Looking East

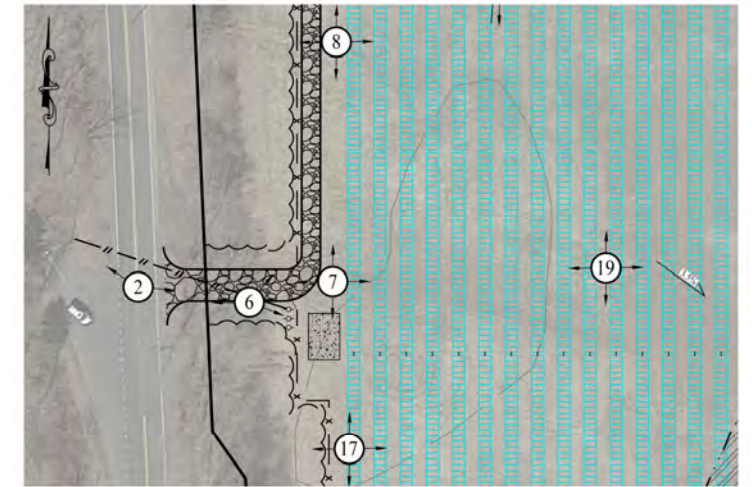




Proposed Gravel Road

Photo 8: Looking South

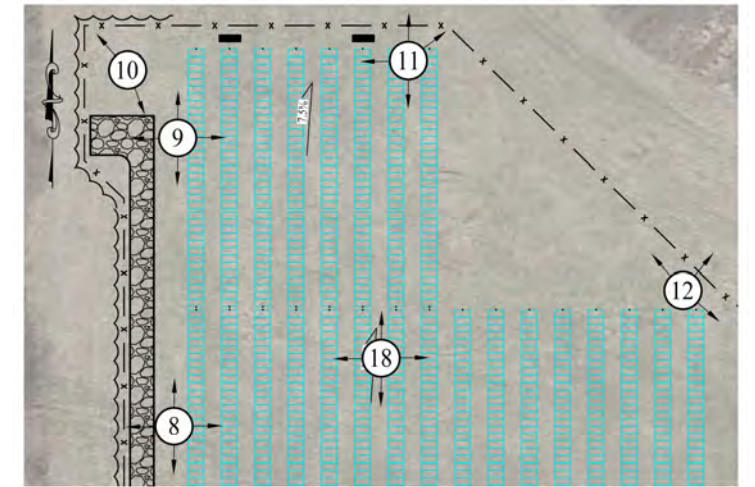




Proposed Gravel Road

Photo 8: Looking West

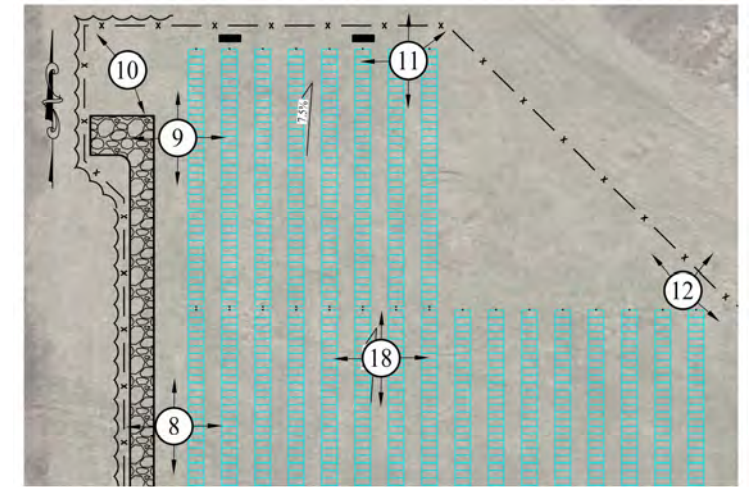




Proposed Chain Link Fence

Photo 9: Looking North

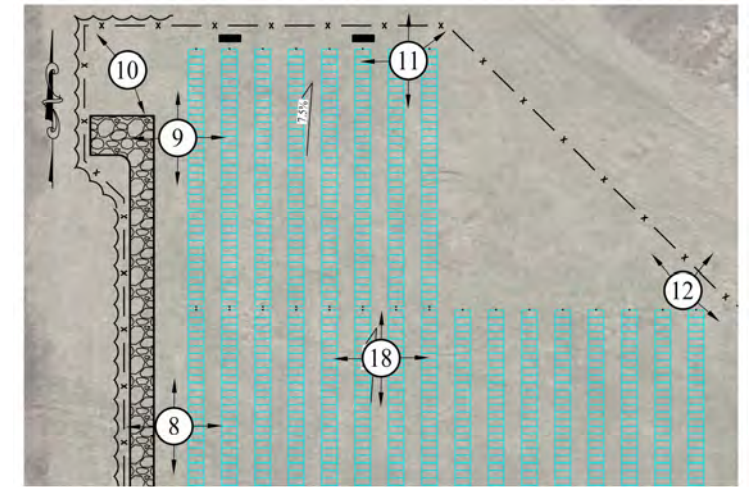




Existing Wetlands

Photo 9: Looking East



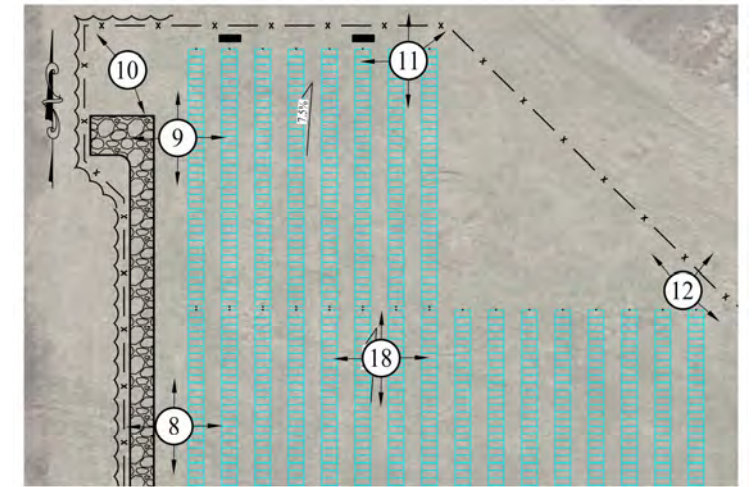


Proposed Gravel Road

Photo 9: Looking South



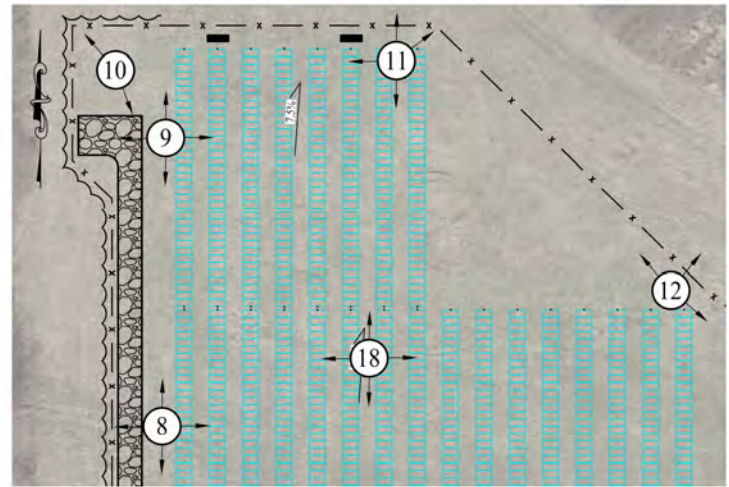




Proposed Gravel Road  
Parking Area

Photo 9: Looking West

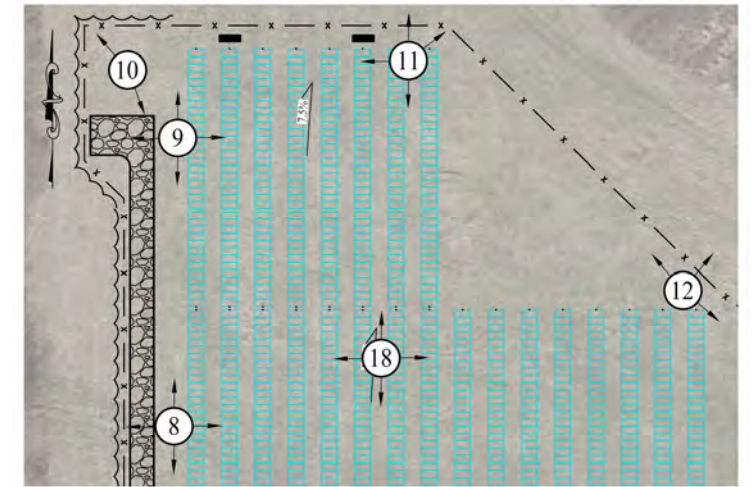




Proposed Chain Link  
Fence

Photo 10: Looking Northwest





Proposed Gravel Road  
Parking Area

Photo 10: Looking Southeast



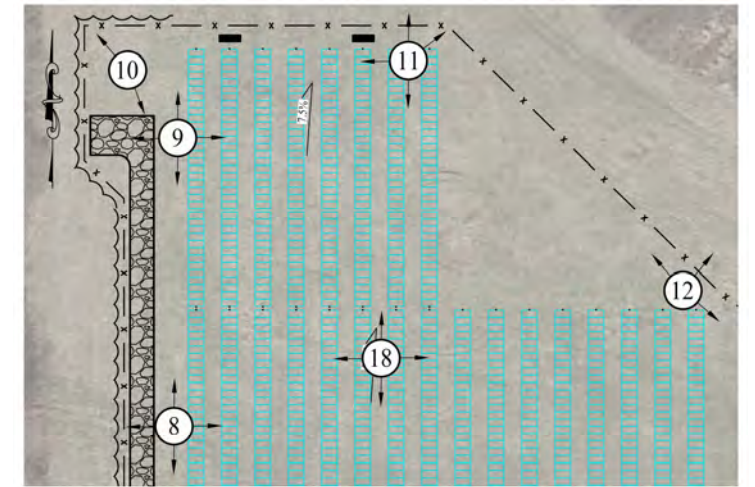
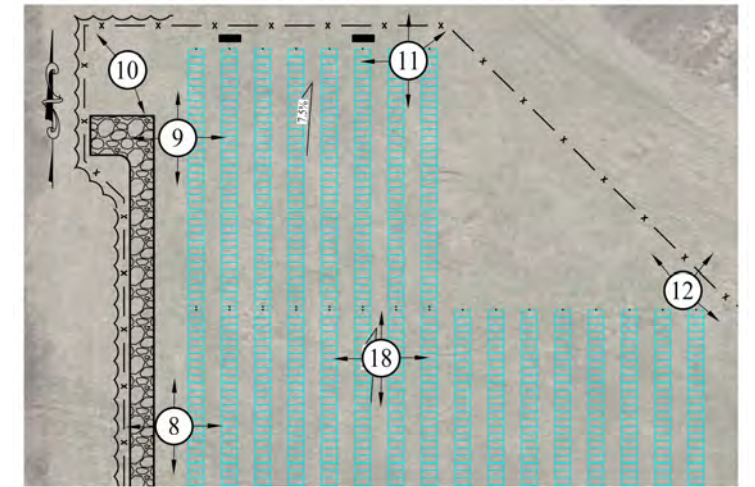


Photo 11: Looking North





Existing Wetlands

Proposed Chain Link  
Fence

Photo 11: Looking Northeast



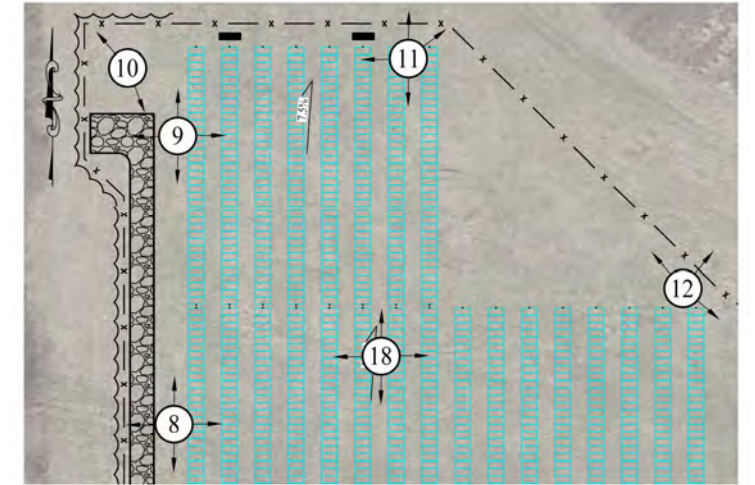
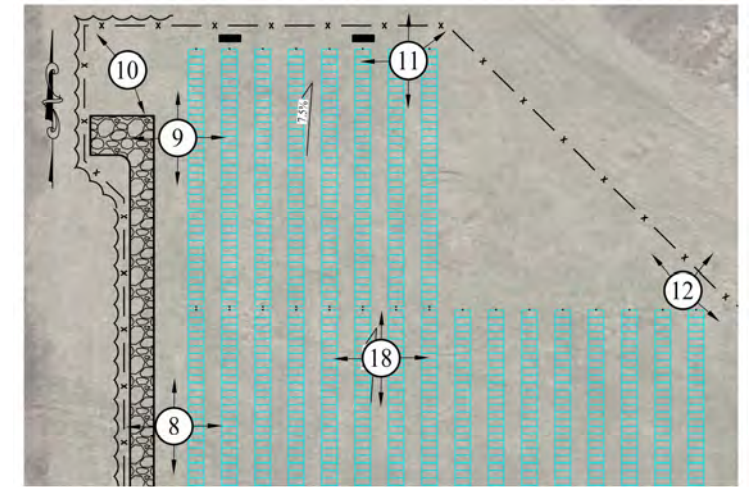


Photo 11: Looking South

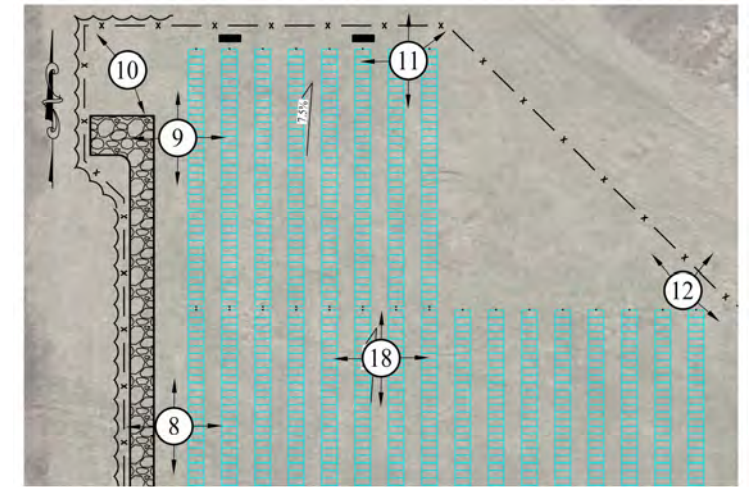




Proposed Chain Link Fence

Photo 11: Looking West



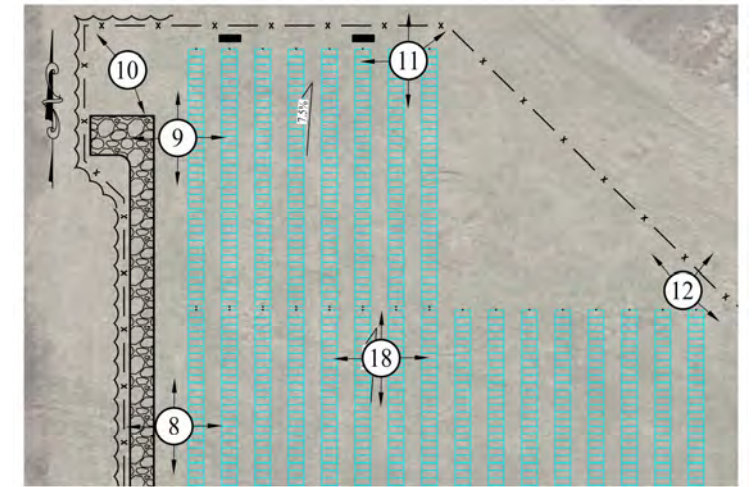


Existing Wetlands

Photo 12: Looking Northeast





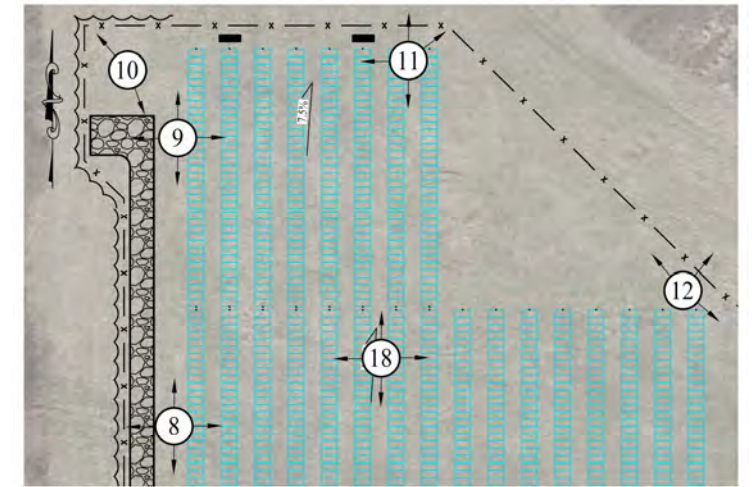


Existing Wetlands

Proposed Chain Link  
Fence

Photo 12: Looking Northwest

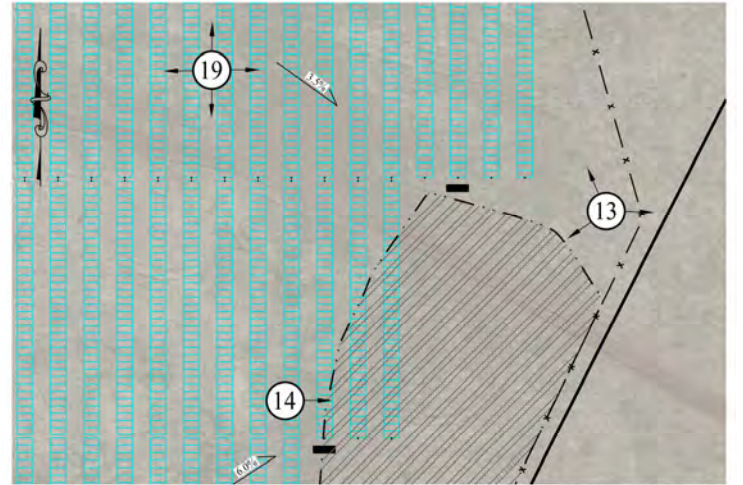




Proposed Chain Link  
Fence

Photo 12: Looking Southeast

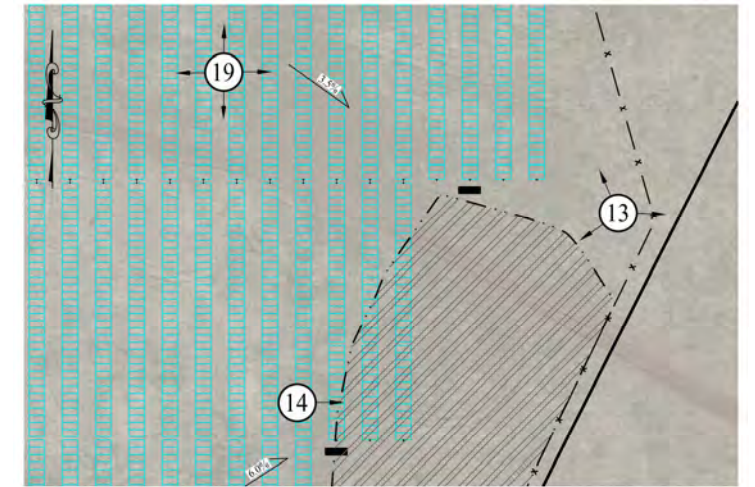




Proposed Chain Link  
Fence

Photo 13: Looking Northwest

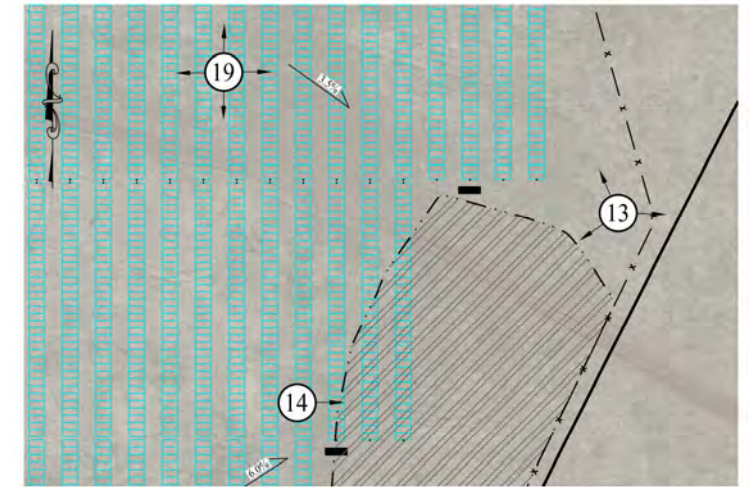




Proposed Chain Link  
Fence

Photo 13: Looking East



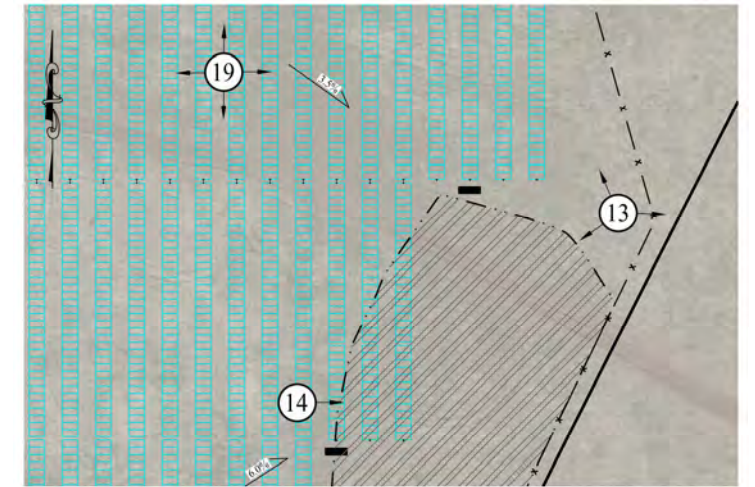


Proposed West Edge of Detention Basin

Neighboring Property

Photo 13: Looking Southwest

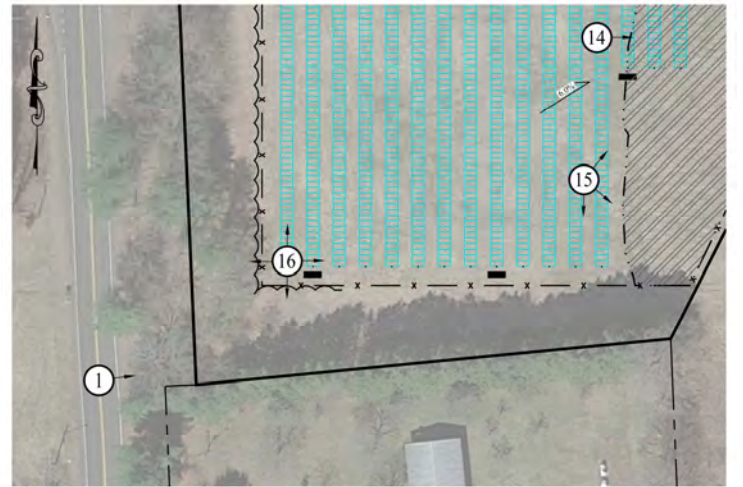




Proposed West Edge of  
Detention Basin

Photo 14: Looking East

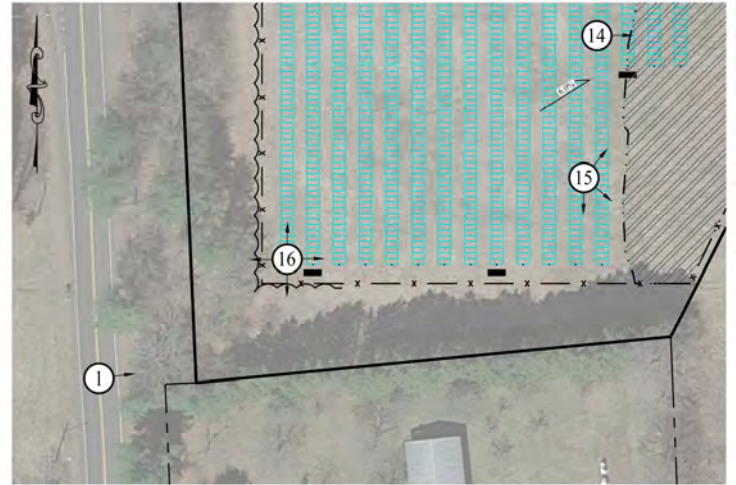




Proposed West Edge of  
Detention Basin

Photo 15: Looking Northeast



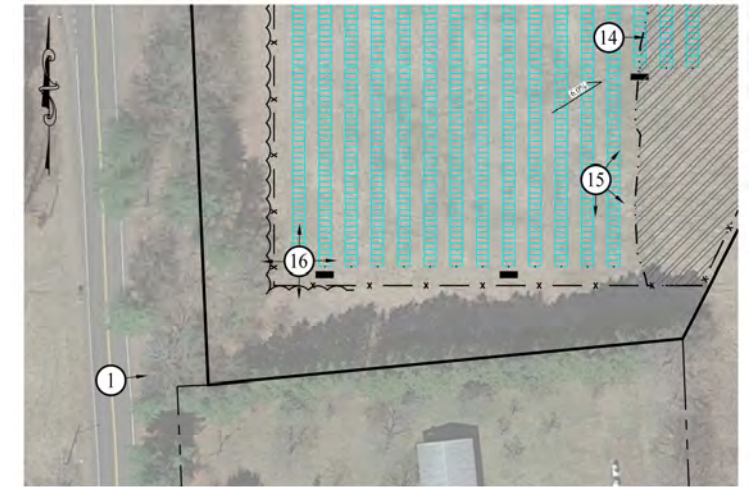


Approximate Limit of Chain Link Fence

Photo 15: Looking Southeast



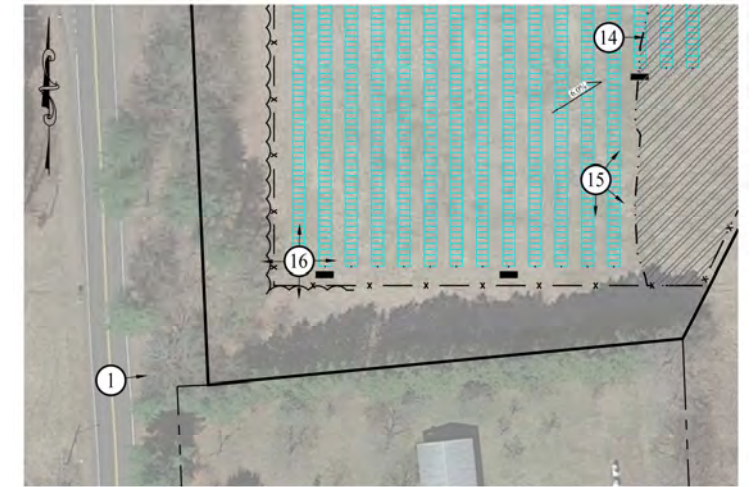




Neighboring Property

Photo 15: Looking South





Proposed Gravel Road

Photo 16: Looking North



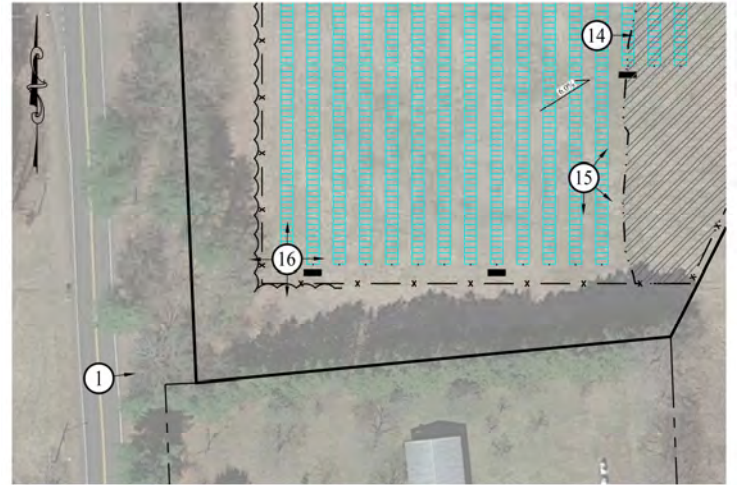


Photo 16: Looking East



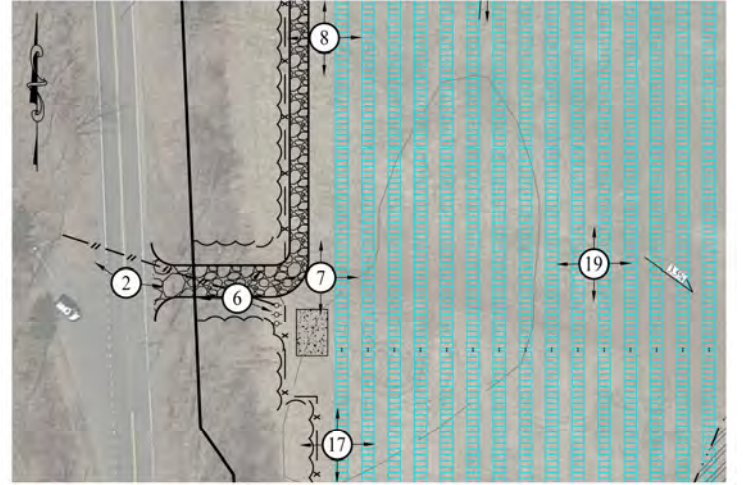
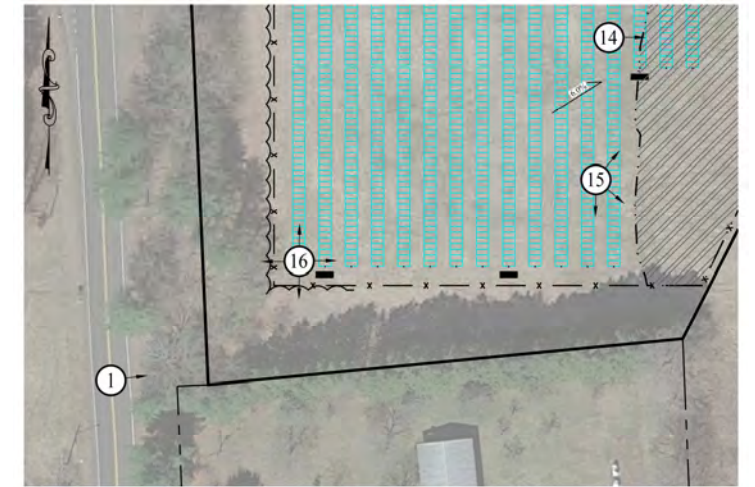


Photo 17: Looking East





Neighboring Property

Approximate Limit of Chain Link Fence

Photo 16: Looking South



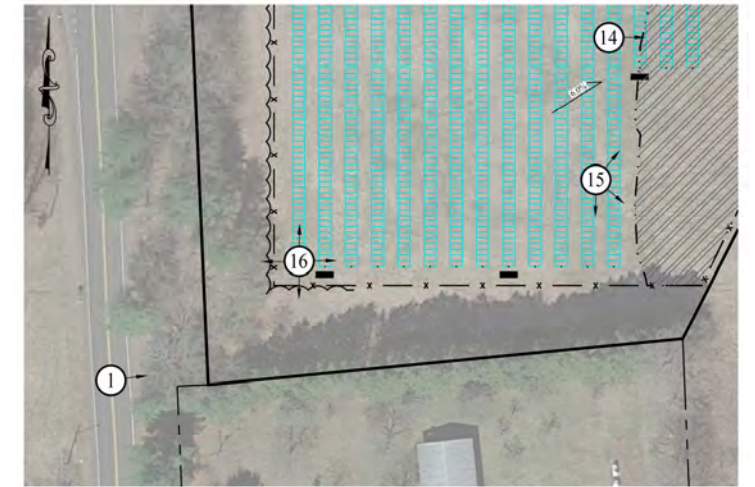
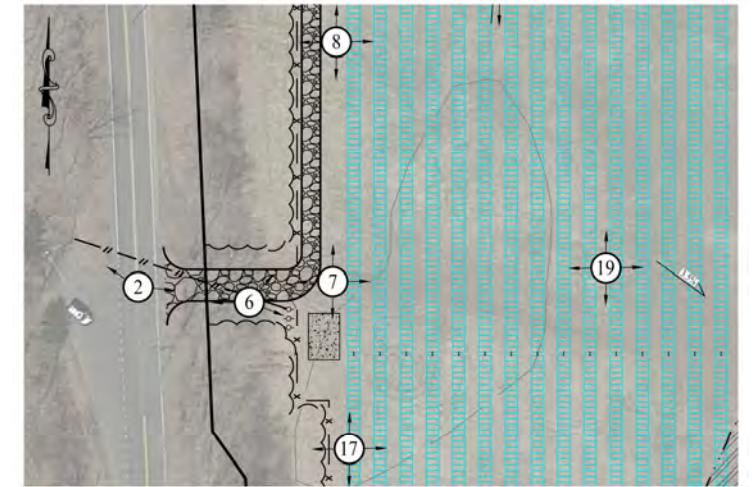


Photo 16: Looking West





Proposed Concrete Pad Area

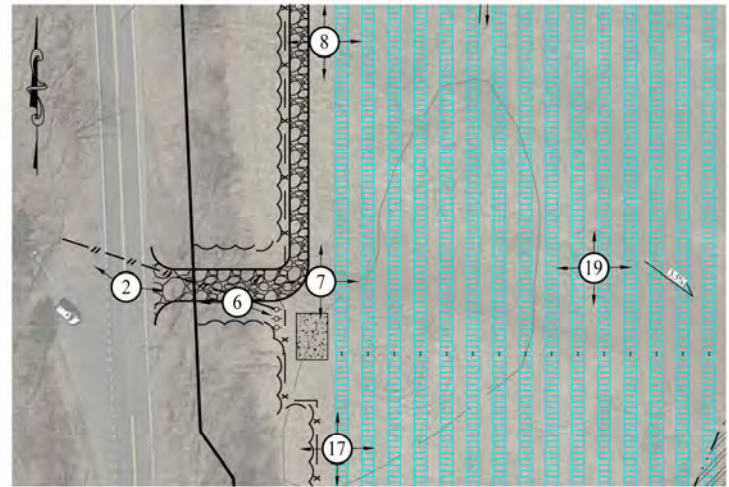
Proposed Chain Link Fence

Proposed Utility Pole

Proposed Gravel Road Access Drive

Photo 17: Looking North





Neighboring Property

Photo 17: Looking South





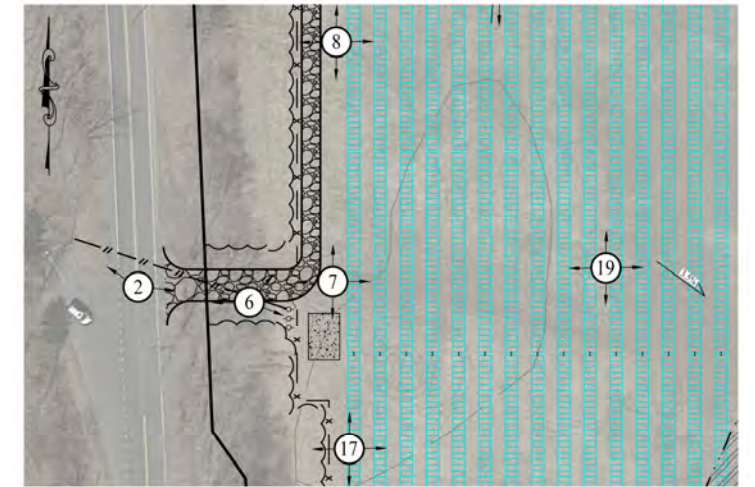


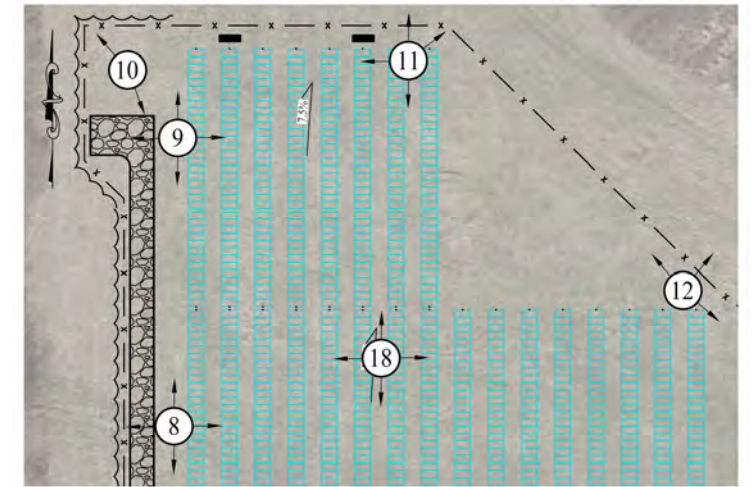
Photo 17: Looking West





Existing Wetlands

Photo 18: Looking North



Existing Wetlands

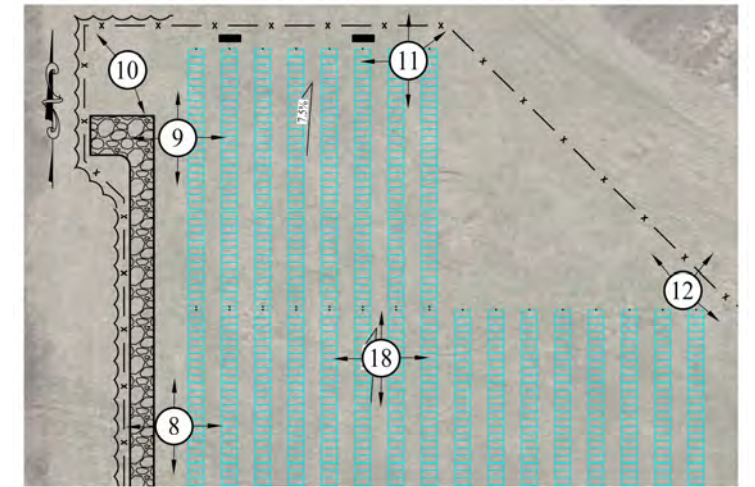
Photo 18: Looking East





Photo 18: Looking South





Chamberlain Highway

Photo 18: Looking West



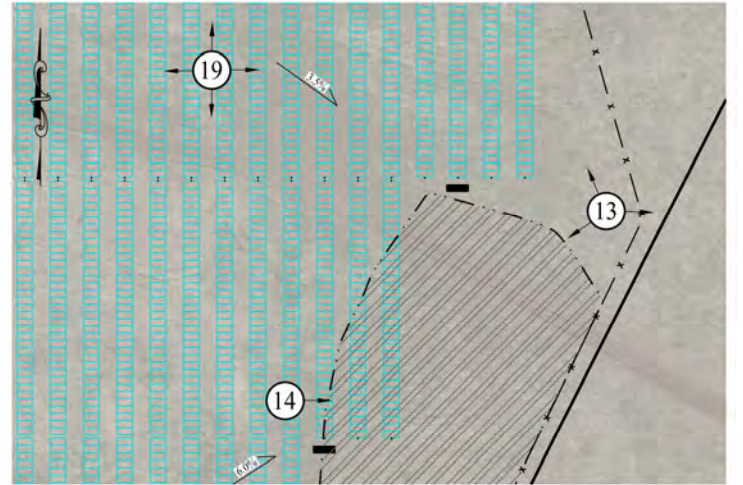


Photo 19: Looking North



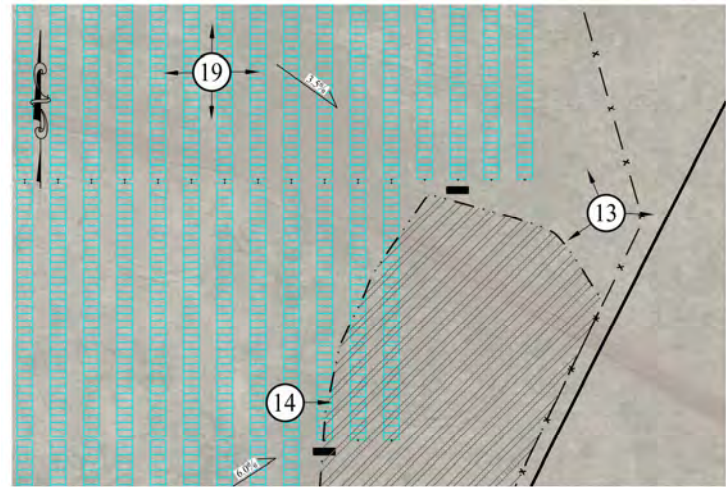
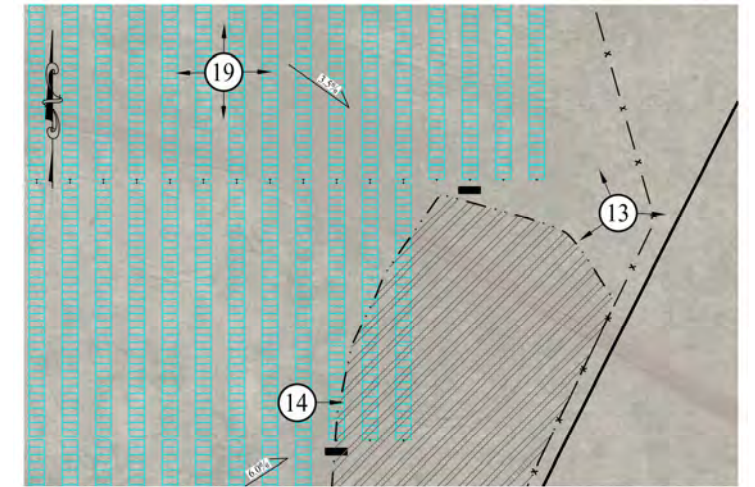


Photo 19: Looking East



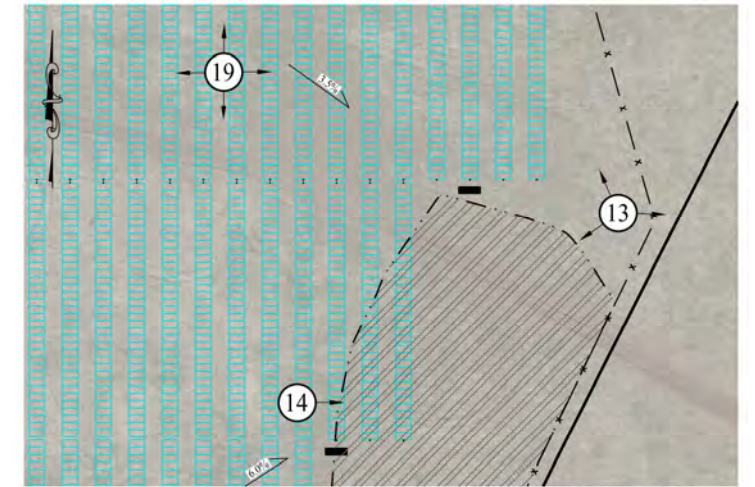


Neighboring Property

Photo 19: Looking South







Proposed Gravel Access Drive onto Chamberlain Highway

Photo 19: Looking West





Existing Wetlands  
Limits

Photo 20: Looking Northeast

