

Site Plans

Issued for	Construction
Date Issued	November 7, 2023
Latest Issue	April 16, 2025

Windsor Solar One

445 River St
Windsor, Connecticut



Applicant

Verogy
124 LaSalle Road, 2nd Floor
West Hartford, CT 06107

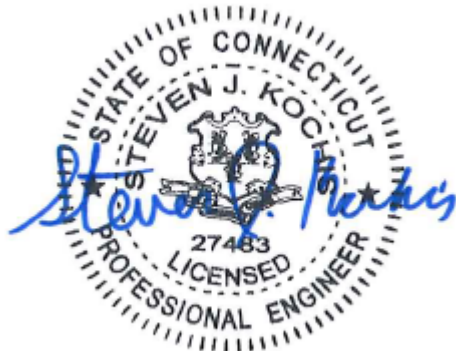
Map / Block / Lot:

039 / 126 / 0010

Owner

Stosonis, Steven
P.O. Box 13
Poquonock, CT 06064

Sheet Index			Reference Drawings		
No.	Drawing Title	Latest Issue	No.	Drawing Title	Latest Issue
C-1.0	Legend and General Notes	April 16, 2025	Sv-1	Partial Property and Topographic Survey	September 12, 2023
C-2.0	Layout and Materials Plan	April 16, 2025			
C-3.0	Grading, Drainage, and Utilities Plan	April 16, 2025			
C-4.0	Erosion and Sediment Control Plan	April 16, 2025			
C-5.0	Site Details	April 16, 2025			
C-6.1-6.2	Planting Plan Notes and Details	April 16, 2025			





100 Great Meadow Road
Suite 200
Wethersfield, CT 06109
860.807.4300

Legend

Exist.	Prop.		Exist.	Prop.	
		PROPERTY LINE			CONCRETE
		PROJECT LIMIT LINE			HEAVY DUTY PAVEMENT
		RIGHT-OF-WAY/PROPERTY LINE			BUILDINGS
		EASEMENT			RIPRAP
		BUILDING SETBACK			CONSTRUCTION EXIT
		PARKING SETBACK			
		BASELINE	27.35 TC x	27.35 TC x	TOP OF CURB ELEVATION
		CONSTRUCTION LAYOUT	26.85 BC x	26.85 BC x	BOTTOM OF CURB ELEVATION
		ZONING LINE	132.75 x 45.0 TW x 38.5 BW	132.75 x 45.0 TW x 38.5 BW	SPOT ELEVATION
		TOWN LINE			TOP & BOTTOM OF WALL ELEVATION
					BORING LOCATION
					TEST PIT LOCATION
					MONITORING WELL
		LIMIT OF DISTURBANCE			UNDERDRAIN
		WETLAND LINE WITH FLAG			DRAIN
		FLOODPLAIN			ROOF DRAIN
		100-YEAR FLOOD LIMITS			SEWER
					FORCE MAIN
		GRAVEL ROAD			OVERHEAD WIRE
		EDGE OF PAVEMENT			WATER
		BITUMINOUS BERM			FIRE PROTECTION
		BITUMINOUS CURB			DOMESTIC WATER
		CONCRETE CURB			GAS
		CURB AND GUTTER			ELECTRIC
		EXTRUDED CONCRETE CURB			STEAM
		MONOLITHIC CONCRETE CURB			TELEPHONE
		PRECAST CONC. CURB			FIRE ALARM
		SLOPED GRAN. EDGING			CABLE TV
		VERT. GRAN. CURB			
		LIMIT OF CURB TYPE			
		SAWCUT			
		BUILDING			CATCH BASIN
		BUILDING ENTRANCE			DOUBLE CATCH BASIN
		LOADING DOCK			GUTTER INLET
		BOLLARD			DRAIN MANHOLE
		DUMPSTER PAD			TRENCH DRAIN
		SIGN			PLUG OR CAP
		DOUBLE SIGN			CLEANOUT
		STEEL GUARDRAIL			FLARED END SECTION
		WOOD GUARDRAIL			HEADWALL
		PATH			SEWER MANHOLE
		TREE LINE			CURB STOP & BOX
		WIRE FENCE			WATER VALVE & BOX
		FENCE			TAPPING SLEEVE, VALVE & BOX
		STOCKADE FENCE			SIAMESE CONNECTION
		STONE WALL			FIRE HYDRANT
		RETAINING WALL			WATER METER
		STREAM / POND / WATER COURSE			POST INDICATOR VALVE
		DETENTION BASIN			WATER WELL
		HAY BALES			GAS GATE
		SILT FENCE			GAS METER
		SILT SOCK / STRAW WATTLE			
		MINOR CONTOUR			ELECTRIC MANHOLE
		MAJOR CONTOUR			ELECTRIC METER
		PARKING COUNT			LIGHT POLE
		COMPACT PARKING STALLS			TELEPHONE MANHOLE
		DOUBLE YELLOW LINE			TRANSFORMER PAD
		STOP LINE			UTILITY POLE
		CROSSWALK			GUY POLE
		ACCESSIBLE CURB RAMP			GUY WIRE & ANCHOR
		ACCESSIBLE PARKING			HAND HOLE
		VAN-ACCESSIBLE PARKING			PULL BOX
			Matchline		
			MATCHLINE		

Abbreviations

General	
ABAN	ABANDON
ACR	ACCESSIBLE CURB RAMP
ADJ	ADJUST
APPROX	APPROXIMATE
BIT	BITUMINOUS
B5	BOTTOM OF SLOPE
BWLL	BROKEN WHITE LANE LINE
CONC	CONCRETE
DYCL	DOUBLE YELLOW CENTER LINE
EL	ELEVATION
ELEV	ELEVATION
EX	EXISTING
FDN	FOUNDATION
FFE	FIRST FLOOR ELEVATION
GRAN	GRANITE
GTD	GRADE TO DRAIN
LA	LANDSCAPE AREA
LOD	LIMIT OF DISTURBANCE
MAX	MAXIMUM
MIN	MINIMUM
NIC	NOT IN CONTRACT
NTS	NOT TO SCALE
PERF	PERFORATED
PROP	PROPOSED
REM	REMOVE
RET	RETAIN
R&D	REMOVE AND DISPOSE
R&R	REMOVE AND RESET
SWEL	SOLID WHITE EDGE LINE
SWLL	SOLID WHITE LANE LINE
TS	TOP OF SLOPE
TYP	TYPICAL
Utility	
CB	CATCH BASIN
CMP	CORRUGATED METAL PIPE
CO	CLEANOUT
DCB	DOUBLE CATCH BASIN
DMH	DRAIN MANHOLE
CIP	CAST IRON PIPE
COND	CONDUIT
DIP	DUCTILE IRON PIPE
FES	FLARED END SECTION
FM	FORCE MAIN
F&G	FRAME AND GRATE
F&C	FRAME AND COVER
GI	GUTTER INLET
GT	GREASE TRAP
HDPE	HIGH DENSITY POLYETHYLENE PIPE
HH	HANDHOLE
HW	HEADWALL
HYD	HYDRANT
INV	INVERT ELEVATION
I=	INVERT ELEVATION
LP	LIGHT POLE
MES	METAL END SECTION
PIV	POST INDICATOR VALVE
PWW	PAVED WATER WAY
PVC	POLYVINYLCHLORIDE PIPE
RCP	REINFORCED CONCRETE PIPE
R=	RIM ELEVATION
SMH	SEWER MANHOLE
TSV	TAPPING SLEEVE, VALVE AND BOX
UG	UNDERGROUND
UP	UTILITY POLE

Notes

General	Erosion Control
<p>1. CONTRACTOR SHALL NOTIFY "CALL BEFORE YOU DIG" (811 OR 1-800-922-4455) AT LEAST 72 HOURS BEFORE EXCAVATING.</p> <p>2. CONTRACTOR SHALL BE RESPONSIBLE FOR SITE SECURITY AND JOB SAFETY. CONSTRUCTION ACTIVITIES SHALL BE IN ACCORDANCE WITH OSHA STANDARDS AND LOCAL REQUIREMENTS.</p> <p>3. WORK WITHIN THE LOCAL RIGHTS-OF-WAY SHALL CONFORM TO LOCAL MUNICIPAL STANDARDS.</p> <p>4. UPON AWARD OF CONTRACT, CONTRACTOR SHALL MAKE NECESSARY CONSTRUCTION NOTIFICATIONS AND APPLY FOR AND OBTAIN NECESSARY PERMITS, PAY FEES, AND POST BONDS ASSOCIATED WITH THE WORK INDICATED ON THE DRAWINGS, IN THE SPECIFICATIONS, AND IN THE CONTRACT DOCUMENTS. DO NOT CLOSE OR OBSTRUCT ROADWAYS, SIDEWALKS, AND FIRE HYDRANTS, WITHOUT APPROPRIATE PERMITS.</p> <p>5. AREAS OUTSIDE THE LIMITS OF PROPOSED WORK DISTURBED BY THE CONTRACTOR'S OPERATIONS SHALL BE RESTORED BY THE CONTRACTOR TO THEIR ORIGINAL CONDITION AT THE CONTRACTOR'S EXPENSE.</p> <p>6. IN THE EVENT THAT SUSPECTED CONTAMINATED SOIL, GROUNDWATER, AND OTHER MEDIA ARE ENCOUNTERED DURING EXCAVATION AND CONSTRUCTION ACTIVITIES BASED ON VISUAL, OLFACTORY, OR OTHER EVIDENCE, THE CONTRACTOR SHALL STOP WORK IN THE VICINITY OF THE SUSPECT MATERIAL TO AVOID FURTHER SPREADING OF THE MATERIAL, AND SHALL NOTIFY THE OWNER IMMEDIATELY SO THAT THE APPROPRIATE TESTING AND SUBSEQUENT ACTION CAN BE TAKEN.</p> <p>7. CONTRACTOR SHALL PREVENT DUST, SEDIMENT, AND DEBRIS FROM EXITING THE SITE AND SHALL BE RESPONSIBLE FOR CLEANUP, REPAIRS AND CORRECTIVE ACTION IF SUCH OCCURS.</p> <p>8. DAMAGE RESULTING FROM CONSTRUCTION LOADS SHALL BE REPAIRED BY THE CONTRACTOR AT NO ADDITIONAL COST TO OWNER.</p> <p>9. CONTRACTOR SHALL CONTROL STORMWATER RUNOFF DURING CONSTRUCTION TO PREVENT ADVERSE IMPACTS TO OFF SITE AREAS, AND SHALL BE RESPONSIBLE TO REPAIR RESULTING DAMAGES, IF ANY, AT NO COST TO OWNER.</p> <p>10. THIS PROJECT DISTURBS MORE THAN ONE ACRE OF LAND AND WILL REQUIRE ADHERENCE TO AND REGISTRATION FOR THE CONNECTICUT DEPARTMENT OF ENERGY & ENVIRONMENTAL PROTECTION GENERAL PERMIT FOR THE DISCHARGE OF STORMWATER AND DEWATERING WASTEWATERS FROM CONSTRUCTION ACTIVITIES, EFFECTIVE DECEMBER 31, 2020.</p> <p>11. STAGING AND STOCKPILE AREAS SHALL NOT BE LOCATED WITHIN ANY WETLAND AND ABUTTING RESOURCE AREA AND SHALL BE LOCATED WITHIN THE LIMITS OF DISTURBANCE.</p>	<p>1. PRIOR TO STARTING ANY OTHER WORK ON THE SITE, THE CONTRACTOR SHALL NOTIFY APPROPRIATE AGENCIES AND SHALL INSTALL EROSION CONTROL MEASURES AS SHOWN ON THE PLANS AND AS IDENTIFIED IN FEDERAL, STATE, AND LOCAL APPROVAL DOCUMENTS PERTAINING TO THIS PROJECT.</p> <p>2. CONTRACTOR OR QUALIFIED INSPECTOR SHALL INSPECT AND MAINTAIN EROSION CONTROL MEASURES ON A WEEKLY BASIS OR MORE FREQUENTLY AS NEEDED, (MINIMUM) OR AS REQUIRED PER THE STORMWATER POLLUTION PREVENTION PLAN (SWPPP). THE CONTRACTOR SHALL ADDRESS DEFICIENCIES AND MAINTENANCE ITEMS WITHIN TWENTY-FOUR HOURS OF INSPECTION. CONTRACTOR SHALL PROPERLY DISPOSE OF SEDIMENT SUCH THAT IT DOES NOT ENCUMBER OTHER DRAINAGE STRUCTURES AND PROTECTED AREAS.</p> <p>3. CONTRACTOR SHALL BE FULLY RESPONSIBLE TO CONTROL CONSTRUCTION SUCH THAT SEDIMENTATION SHALL NOT AFFECT REGULATORY PROTECTED AREAS, WHETHER SUCH SEDIMENTATION IS CAUSED BY WATER, WIND, OR DIRECT DEPOSIT.</p> <p>4. CONTRACTOR SHALL PERFORM CONSTRUCTION SEQUENCING SUCH THAT EARTH MATERIALS ARE EXPOSED FOR A MINIMUM AMOUNT OF TIME BEFORE THEY ARE COVERED, SEEDED, OR OTHERWISE STABILIZED TO PREVENT EROSION.</p> <p>5. UPON COMPLETION OF CONSTRUCTION AND ESTABLISHMENT OF PERMANENT GROUND COVER, CONTRACTOR SHALL REMOVE AND DISPOSE OF EROSION CONTROL MEASURES AND CLEAN SEDIMENT AND DEBRIS FROM ENTIRE DRAINAGE AND SEWER SYSTEMS.</p> <p>6. VEGETATIVE SLOPE STABILIZATION WILL BE IMPLEMENTED WITHIN 14 DAYS AFTER GRADING OR CONSTRUCTION ACTIVITIES HAVE TEMPORARILY OR PERMANENTLY CEASED. VEGETATIVE SLOPE STABILIZATION WILL BE USED TO MINIMIZE EROSION ON SLOPES OF 3:1 OR STEEPER. ESTABLISHMENT OF TEMPORARY AND PERMANENT VEGETATIVE COVER MAY BE ESTABLISHED BY HYDRO-SEEDING OR SODDING. A SUITABLE TOPSOIL, GOOD SEEDBED PREPARATION, AND ADEQUATE LIME, FERTILIZER AND WATER WILL BE PROVIDED FOR EFFECTIVE ESTABLISHMENT OF THESE VEGETATIVE STABILIZATION METHODS. MULCH WILL ALSO BE USED AFTER PERMANENT SEEDING TO PROTECT SOIL FROM THE IMPACT OF FALLING RAIN AND TO INCREASE THE CAPACITY OF THE SOIL TO ABSORB WATER.</p>
	<p><u>Existing Conditions Information</u></p> <p>1. BASE PLAN: THE PROPERTY LINES SHOWN WERE DETERMINED BY PLANS AND DEEDS OF RECORD AND MONUMENTS FOUND IN A FIELD SURVEY CONDUCTED BY OTHERS ON SEPTEMBER 12, 2023.</p> <p>2. TOPOGRAPHY: ELEVATIONS ARE BASED ON THE NORTH AMERICAN VERTICAL DATUM OF 1988.</p>
	<p><u>Document Use</u></p> <p>1. THESE PLANS AND CORRESPONDING CADD DOCUMENTS ARE INSTRUMENTS OF PROFESSIONAL SERVICE, AND SHALL NOT BE USED, IN WHOLE OR IN PART, FOR ANY PURPOSE OTHER THAN FOR WHICH IT WAS CREATED WITHOUT THE EXPRESSED, WRITTEN CONSENT OF VHB. ANY UNAUTHORIZED USE, REUSE, MODIFICATION OR ALTERATION, INCLUDING AUTOMATED CONVERSION OF THIS DOCUMENT SHALL BE AT THE USER'S SOLE RISK WITHOUT LIABILITY OR LEGAL EXPOSURE TO VHB.</p> <p>2. CONTRACTOR SHALL NOT RELY SOLELY ON ELECTRONIC VERSIONS OF PLANS, SPECIFICATIONS, AND DATA FILES THAT ARE OBTAINED FROM THE DESIGNERS, BUT SHALL VERIFY LOCATION OF PROJECT FEATURES IN ACCORDANCE WITH THE PAPER COPIES OF THE PLANS AND SPECIFICATIONS THAT ARE SUPPLIED AS PART OF THE CONTRACT DOCUMENTS.</p> <p>3. SYMBOLS AND LEGENDS OF PROJECT FEATURES ARE GRAPHIC REPRESENTATIONS AND ARE NOT NECESSARILY SCALED TO THEIR ACTUAL DIMENSIONS OR LOCATIONS ON THE DRAWINGS. THE CONTRACTOR SHALL REFER TO THE DETAIL SHEET DIMENSIONS, MANUFACTURERS' LITERATURE, SHOP DRAWINGS AND FIELD MEASUREMENTS OF SUPPLIED PRODUCTS FOR LAYOUT OF THE PROJECT FEATURES.</p>
<p><u>Utilities</u></p> <p>1. THE LOCATIONS, SIZES, AND TYPES OF EXISTING UTILITIES ARE SHOWN AS AN APPROXIMATE REPRESENTATION ONLY. THE OWNER OR ITS REPRESENTATIVE(S) HAVE NOT INDEPENDENTLY VERIFIED THIS INFORMATION AS SHOWN ON THE PLANS. THE UTILITY INFORMATION SHOWN DOES NOT GUARANTEE THE ACTUAL EXISTENCE, SERVICEABILITY, OR OTHER DATA CONCERNING THE UTILITIES, NOR DOES IT GUARANTEE AGAINST THE POSSIBILITY THAT ADDITIONAL UTILITIES MAY BE PRESENT THAT ARE NOT SHOWN ON THE PLANS. PRIOR TO ORDERING MATERIALS AND BEGINNING CONSTRUCTION, THE CONTRACTOR SHALL VERIFY AND DETERMINE THE EXACT LOCATIONS, SIZES, AND ELEVATIONS OF THE POINTS OF CONNECTIONS TO EXISTING UTILITIES AND, SHALL CONFIRM THAT THERE ARE NO INTERFERENCES WITH EXISTING UTILITIES AND THE PROPOSED UTILITY ROUTES, INCLUDING ROUTES WITHIN THE PUBLIC RIGHTS OF WAY.</p> <p>2. WHERE AN EXISTING UTILITY IS FOUND TO CONFLICT WITH THE PROPOSED WORK, OR EXISTING CONDITIONS DIFFER FROM THOSE SHOWN SUCH THAT THE WORK CANNOT BE COMPLETED AS INTENDED, THE LOCATION, ELEVATION, AND SIZE OF THE UTILITY SHALL BE ACCURATELY DETERMINED WITHOUT DELAY BY THE CONTRACTOR, AND THE INFORMATION FURNISHED IN WRITING TO THE OWNER'S REPRESENTATIVE FOR THE RESOLUTION OF THE CONFLICT AND CONTRACTOR'S FAILURE TO NOTIFY PRIOR TO PERFORMING ADDITIONAL WORK RELEASES OWNER FROM OBLIGATIONS FOR ADDITIONAL PAYMENTS WHICH OTHERWISE MAY BE WARRANTED TO RESOLVE THE CONFLICT.</p> <p>3. THE LOCATION, SIZE, DEPTH, AND SPECIFICATIONS FOR CONSTRUCTION OF PROPOSED PRIVATE UTILITY SERVICES SHALL BE INSTALLED ACCORDING TO THE REQUIREMENTS PROVIDED BY, AND APPROVED BY, THE RESPECTIVE UTILITY COMPANY (GAS, TELEPHONE, ELECTRIC, FIRE ALARM, ETC.). FINAL DESIGN LOADS AND LOCATIONS TO BE COORDINATED WITH OWNER AND ARCHITECT.</p> <p>4. CONTRACTOR SHALL MAKE ARRANGEMENTS FOR AND SHALL BE RESPONSIBLE FOR PAYING FEES FOR POLE RELOCATION AND FOR THE ALTERATION AND ADJUSTMENT OF GAS, ELECTRIC, TELEPHONE, FIRE ALARM, AND ANY OTHER PRIVATE UTILITIES, WHETHER WORK IS PERFORMED BY CONTRACTOR OR BY THE UTILITIES COMPANY.</p> <p>5. CONTRACTOR SHALL COORDINATE WITH ELECTRICAL CONTRACTOR AND SHALL FURNISH EXCAVATION, INSTALLATION, AND BACKFILL OF ELECTRICAL FURNISHED SITEMARK RELATED ITEMS SUCH AS PULL BOXES, CONDUITS, DUCT BANKS, LIGHT POLE BASES, AND CONCRETE PADS. SITE CONTRACTOR SHALL FURNISH CONCRETE ENCASEMENT OF DUCT BANKS IF REQUIRED BY THE UTILITY COMPANY AND AS INDICATED ON THE DRAWINGS.</p>	
<p><u>Layout and Materials</u></p> <p>1. PROPOSED BOUNDS AND ANY EXISTING PROPERTY LINE MONUMENTATION DISTURBED DURING CONSTRUCTION SHALL BE SET OR RESET BY A PROFESSIONAL LICENSED SURVEYOR.</p> <p>2. PRIOR TO START OF CONSTRUCTION, CONTRACTOR SHALL VERIFY EXISTING PAVEMENT ELEVATIONS AT INTERFACE WITH PROPOSED PAVEMENTS, AND EXISTING GROUND ELEVATIONS ADJACENT TO DRAINAGE OUTLETS TO ASSURE PROPER TRANSITIONS BETWEEN EXISTING AND PROPOSED FACILITIES.</p> <p>3. FINAL LAYOUT SUBJECT TO CONDITIONS ENCOUNTERED IN THE FIELD.</p>	
<p><u>Demolition</u></p> <p>1. CONTRACTOR SHALL DISPOSE OF DEMOLITION DEBRIS IN ACCORDANCE WITH APPLICABLE FEDERAL, STATE AND LOCAL REGULATIONS, ORDINANCES AND STATUTES.</p> <p>2. THE DEMOLITION LIMITS DEPICTED IN THE PLANS IS INTENDED TO AID THE CONTRACTOR DURING THE BIDDING AND CONSTRUCTION PROCESS AND IS NOT INTENDED TO DEPICT EACH AND EVERY ELEMENT OF DEMOLITION. THE CONTRACTOR IS RESPONSIBLE FOR IDENTIFYING THE DETAILED SCOPE OF DEMOLITION BEFORE SUBMITTING ITS BID/PROPOSAL TO PERFORM THE WORK AND SHALL MAKE NO CLAIMS AND SEEK NO ADDITIONAL COMPENSATION FOR CHANGED CONDITIONS OR UNFORESEEN OR LATENT SITE CONDITIONS RELATED TO ANY CONDITIONS DISCOVERED DURING EXECUTION OF THE WORK.</p> <p>3. UNLESS OTHERWISE SPECIFICALLY PROVIDED ON THE PLANS OR IN THE SPECIFICATIONS, THE ENGINEER HAS NOT PREPARED DESIGNS FOR AND SHALL HAVE NO RESPONSIBILITY FOR THE PRESENCE, DISCOVERY, REMOVAL, ABATEMENT OR DISPOSAL OF HAZARDOUS MATERIALS, TOXIC WASTES OR POLLUTANTS AT THE PROJECT SITE. THE ENGINEER SHALL NOT BE RESPONSIBLE FOR ANY CLAIMS OF LOSS, DAMAGE, EXPENSE, DELAY, INJURY OR DEATH ARISING FROM THE PRESENCE OF HAZARDOUS MATERIAL AND CONTRACTOR SHALL INDEMNIFY AND HOLD HARMLESS THE ENGINEER FROM ANY CLAIMS MADE IN CONNECTION THEREWITH. MOREOVER, THE ENGINEER SHALL HAVE NO ADMINISTRATIVE OBLIGATIONS OF ANY TYPE WITH REGARD TO ANY CONTRACTOR AMENDMENT INVOLVING THE ISSUES OF PRESENCE, DISCOVERY, REMOVAL, ABATEMENT OR DISPOSAL OF ASBESTOS OR OTHER HAZARDOUS MATERIALS.</p>	

Windsor Solar One

445 River St
Windsor, Connecticut

No.	Revision	Date	Apprd.
1	CSC Public Hearing #2	2024-03-07	SJK
2	Landscape Details Update	2024-06-06	SJK
3	Wildlife Protection	2024-10-23	SJK
4	Issued for Construction	2025-01-08	SJK
5	Revised Interconnection	2025-04-16	SJK

Designed by	Checked by
DRB	SJK

Construction

January 8, 2025

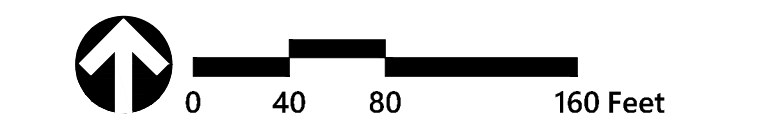
Legend and General Notes

Drawing Number

C-1.0

Sheet 1 of 7

Project Number
43322.00



Windsor Solar One

445 River St
Windsor, Connecticut

No.	Revision	Date	Apprvd.
1	CSC Public Hearing #2	2024-03-07	SJK
2	Landscape Details Update	2024-06-06	SJK
3	Wildlife Protection	2024-10-23	SJK
4	Issued for Construction	2025-01-08	SJK
5	Revised Interconnection	2025-04-16	SJK

Designed by DRB	Checked by SJK
Issued for Construction	Date January 8, 2025

Layout and Materials Plan

Drawing Number

C-2.0

Sheet 2 of 7

Project Number
43322.00



Windsor Solar One
445 River St
Windsor, Connecticut

No.	Revision	Date	Appvd.
1	CSC Public Hearing #2	2024-03-07	SJK
2	Landscape Details Update	2024-06-06	SJK
3	Wildlife Protection	2024-10-23	SJK
4	Issued for Construction	2025-01-08	SJK
5	Revised Interconnection	2025-04-16	SJK

Designed by	Checked by
DRB	SJK
Issued for	Date
Construction	January 8, 2025

Drawing Title
**Grading, Drainage and
Utilities Plan**

Drawing Number

C-3.0

Sheet of
3 7

Project Number
43322.00

CONSTRUCTION SEQUENCING

- ALL CONSTRUCTION ACTIVITIES ARE EXPECTED TO BEGIN IN THE SPRING/SUMMER OF 2025 AND BE COMPLETED BY THE END OF 2025. THE GENERAL CONSTRUCTION NOTES ARE AS FOLLOWS:
1. THE SITE CONTRACTOR SHALL BE FULLY RESPONSIBLE TO CONTROL CONSTRUCTION SUCH THAT SEDIMENTATION SHALL NOT AFFECT ROADS/HIGHWAYS AND THEIR DRAINAGE SYSTEM, NEIGHBORING PROPERTIES, WETLANDS AND REGULATORY PROTECTED AREAS, WHETHER SUCH SEDIMENTATION IS CAUSED BY WATER, WIND, OR DIRECT DEPOSIT. DESIGNATED ACCESS DRIVES MUST BE USED TO THE MAXIMUM EXTENTS POSSIBLE. IT IS REQUIRED THAT THE SITE CONTRACTOR PERFORM A DAILY INSPECTION OF ALL EROSION AND SEDIMENT CONTROL MEASURES EMPLOYED AT THE SITE.
 2. A CTDEEP-APPROVED QUALIFIED INSPECTOR SHALL BE ASSIGNED TO BE RESPONSIBLE FOR PERFORMING INSPECTIONS AND PREPARING REPORTS IN ACCORDANCE WITH SECTION 5(B)(4)(B) OF THE CONSTRUCTION GENERAL PERMIT. THESE INSPECTIONS SHALL TAKE PLACE WEEKLY, AT A MINIMUM, AND SHALL BE REQUIRED WITHIN 24 HOURS OF A RAINFALL EVENT EXCEEDING 0.5 INCHES. THE ENGINEER OF RECORD SHALL BE REQUIRED TO REVIEW AND COUNTER-SIGN THE PREPARED WEEKLY REPORTS. IT IS ALSO ANTICIPATED THAT REPRESENTATIVES FROM CTDEEP AND/OR THE STATE CONSERVATION DISTRICT WILL PERFORM PERIODIC INSPECTIONS.
 3. ENGINEER OF RECORD WILL PERFORM MONTHLY PLAN IMPLEMENTATION INSPECTIONS AND PREPARE REPORTS OF THE FINDINGS. THESE INSPECTIONS SHALL LAST A MINIMUM OF THREE (3) MONTHS OR UNTIL THE COMPLETION AND STABILIZATION OF ALL EROSION CONTROL MEASURES AT THE SITE.
 4. THROUGHOUT THE COURSE OF THE CONSTRUCTION PROJECT, ADDITIONAL SEDIMENT AND EROSION CONTROL MEASURES MAY BE WARRANTED AT THE DISCRETION OF THE QUALIFIED INSPECTOR AND/OR DESIGN ENGINEER. THESE IMPROVEMENTS MUST BE IMPLEMENTED IN A TIMELY FASHION IN ACCORDANCE WITH THE REQUIREMENTS OF THE CONSTRUCTION GENERAL PERMIT. ADDITIONALLY, AREAS OF PROPOSED COMPACTED NATIVE SOIL ROADS SHALL BE CONVERTED TO STABLE GRAVEL ROADS IF/AS DETERMINED BY THE QUALIFIED INSPECTOR OR ENGINEER OF RECORD.
 5. PRIOR TO CONSTRUCTION, THE APPLICANT SHALL PROVIDE THE TOWN OF WINDSOR WITH THE NAME OF CONTACT AND 24-HOUR CONTACT INFORMATION.
 6. CONTRACTOR SHALL ADHERE TO 2002 CONNECTICUT GUIDELINES FOR EROSION AND SEDIMENT CONTROL, AS AMENDED.
 7. THE CONTRACTOR SHALL HOLD PRE-CONSTRUCTION MEETING(S). ATTENDEES SHALL INCLUDE, BUT NOT BE LIMITED TO, DEVELOPER, REPRESENTATIVES OF THE GENERAL CONTRACTOR, SITE CONTRACTOR, CTDEEP, TOWN OF WINDSOR, ENGINEER OF RECORD, AND QUALIFIED SWPPP INSPECTOR.
 8. THE CONTRACTOR SHALL CONTACT CALL-BEFORE-YOU-DIG (1-800-922-4455) PRIOR TO ENGAGING IN ANY EXCAVATION ACTIVITIES AT THE SITE.
 9. THE CONTRACTOR SHALL NOTIFY THE TOWN OF WINDSOR AGENT, ZONING ENFORCEMENT OFFICER, AND ENGINEERING DEPARTMENT, 48 HOURS PRIOR TO COMMENCEMENT OF ANY CONSTRUCTION ACTIVITY.
 10. NO CONSTRUCTION OF SITE IMPROVEMENTS MAY BEGIN UNTIL THE PROPER EROSION CONTROL MEASURES SERVING THE AREA TO BE DISTURBED ARE IN PLACE.
 11. ANTICIPATED WORK HOURS WILL BE BETWEEN 7:00 AM AND 6:00 PM ON MONDAY THROUGH FRIDAY AND BETWEEN 8:00 AM AND 5:00 PM ON SATURDAY.
 12. ANY DEWATERING BY PUMP SHALL INCLUDE AN INTAKE AND/OR DISCHARGE FILTRATION SYSTEM (I.E. DIRTBAG SYSTEM) AND BE PUMPED TO STABLE GROUND. CONTRACTOR TO ENSURE DISCHARGED WATER IS RUNNING CLEAN OR ALTERNIOR METHODS MUST BE EMPLOYED.

PRE-CONSTRUCTION SITE PROTECTION SEQUENCE

1. ACCESS ROADS SHALL BE DESIGNATED AS EARLY AS FEASIBLE AND USED PRIMARILY FOR CONSTRUCTION TRAFFIC.
2. INSTALL EROSION AND SEDIMENT CONTROLS FOLLOWING THE CT GUIDELINES AND MANUFACTURER'S DIRECTIONS. DURING CONSTRUCTION, THE CONTRACTOR SHALL INSTALL MEASURES AS REQUIRED BY THE ENGINEER OF RECORD OR QUALIFIED INSPECTOR, TO PREVENT SEDIMENT-LADEN RUNOFF FROM REACHING WETLANDS OR DISCHARGING OFFSITE.
3. INSTALL TEMPORARY SEDIMENT TRAPS AND CONVEYANCE SWALES IN ACCORDANCE WITH THE APPROVED SITE-SPECIFIC SWPPP AND CT GUIDELINES. THE ENGINEER OF RECORD SHALL INSPECT FEATURES TO CONFIRM REQUIRED STORAGE CAPACITIES ARE PROVIDED AND THAT OUTLETS AND/OR SPILLWAYS ARE CONSTRUCTED CORRECTLY. DISCHARGE AREAS BELOW OUTFALLS MUST BE INSPECTED TO CONFIRM FLOW WILL BE OVER STABLE GROUND AND SHEET FLOW IS ENCOURAGED. IF DISTURBED SOILS ARE PRESENT, THE ENGINEER OF RECORD TO PROVIDE CORRECT MEASURES TO ADDRESS CONDITION.
4. SEED AND PROTECT DISTURBED SOILS AROUND SEDIMENT TRAPS WITHIN 14 DAYS OF COMPLETION. SECURE SEED WITH BIODEGRADABLE EROSION CONTROL MATTING.

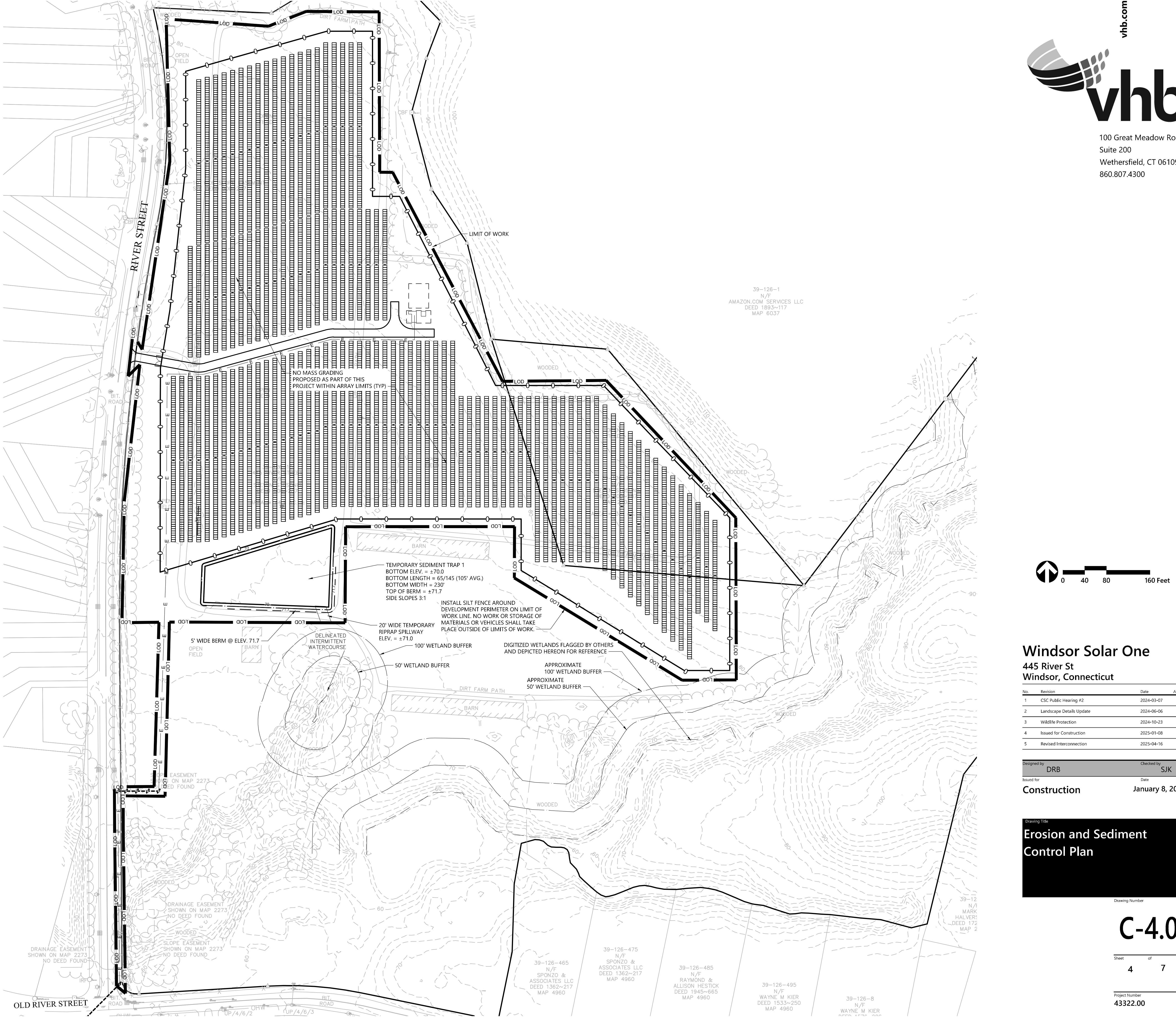
CONSTRUCTION SEQUENCE

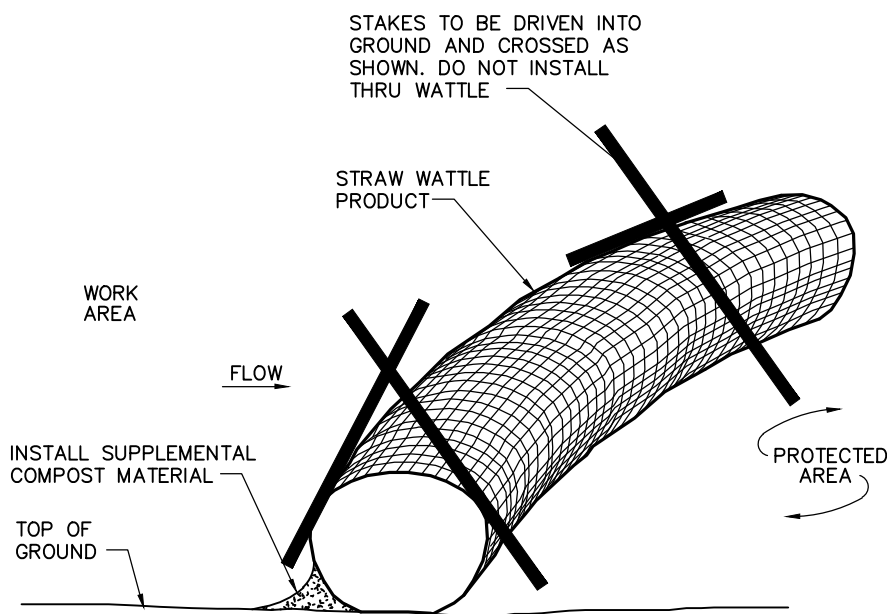
1. CLEAR AND GRUB AREAS TO LIMITS PRESCRIBED ON THE PLANS.
2. TOPSOIL SHALL BE REPLACED OVER REGRADED AREAS UPON COMPLETION OF MASS EARTHWORK ACTIVITIES AND AREAS WHICH WERE DISTURBED BY MASS EARTHWORK OPERATIONS SHALL BE RESEED WITHIN 14 DAYS OF COMPLETION.
3. THROUGHOUT CONSTRUCTION, THE CONTRACTOR SHALL ADDRESS ONGOING EROSION PROBLEMS USING TEMPORARY DIVERSIONS AND FILLING AND GRADING GULLIES. TRACK GULLIES UP AND DOWN SLOPE. A STAPLED BIODEGRADABLE EROSION CONTROL BLANKET WITHOUT MONOFLAMENT MESH IS AN ACCEPTABLE ALTERNATIVE FOR HYDROSEED AND BFM.
4. UPON COMPLETION OF THIS CONSTRUCTION PHASE, ALL DISTURBED AREAS SHALL BE SEEDED AND STABILIZED WITH BIODEGRADABLE EROSION CONTROL MATTING PRIOR TO CONTINUING CONSTRUCTION SEQUENCE.
5. INSTALL PILES AND/OR GROUND SCREWS FOR SOLAR PANEL RACKING.
6. INSTALL ELECTRICAL CONDUIT AS REQUIRED BY THE ELECTRICAL DESIGN PLANS.
7. THE INSTALLATION OF RACKING SHALL FOLLOW THE FOUNDATION INSTALLATION BY ROUGHLY ONE WEEK STARTING FROM THE SAME POINT.
8. RESEED AND REGRADE ALL AREAS DISTURBED BY CONSTRUCTION TRAFFIC WITHIN THE ARRAYS WHERE RACKS ARE INSTALLED AS EARLY AS POSSIBLE. RUTS AND RILLS SHALL BE SMOOTHED AND GRADED AS DISCOVERED.
9. INSTALL SOLAR PANEL MODULES IN THE RACKING. MUCH OF THIS WORK IS ANTICIPATED TO BE PERFORMED BY HAND AND LIGHT CONSTRUCTION EQUIPMENT WHICH WILL CAUSE MINIMAL DISTURBANCE COMPARED TO THE USE OF HEAVY EQUIPMENT. DESIGNATED ACCESS ROADS SHALL STILL BE USED TO THE MAXIMUM EXTENTS POSSIBLE.
10. UPON COMPLETION OF CONSTRUCTION, RE-SEED ALL DISTURBED AREAS WITHIN 14 DAYS AND REVENT VEHICULAR TRAFFICKING OVER THESE AREAS. INSTALL FINAL LANDSCAPING.
11. AFTER SITE IS STABILIZED, AND AFTER INSPECTION BY DESIGN ENGINEER AND/OR CTDEEP REPRESENTATIVE, REMOVE TEMPORARY EROSION AND SEDIMENT CONTROLS INCLUDING SEDIMENT TRAPS AND DIVERSION SWALES. ENTIRE SITE SHALL BE CHECKED FOR AND CLEANED OF SEDIMENT AS NEEDED.

WILDLIFE PROTECTION

REFERENCE IS MADE TO THE CTDEEP WILDLIFE DIVISION FINAL DETERMINATION DATED OCTOBER 21, 2024. CONTRACTOR SHALL BE AWARE THAT AMERICAN KESTRELS AND BOX TURTLES MAY BE PRESENT ON SITE. SAFE TREE CLEARING FOR KESTRELS IS CONSIDERED TO BE DURING THE PERIOD OF OCTOBER 1ST TO MARCH 1ST. ACTIVE TURTLE SEASON IS CONSIDERED TO BE APRIL 1ST TO SEPTEMBER 30TH. GIVEN THESE RESTRICTIONS THE CONTRACTOR SHALL TAKE THE FOLLOWING PRECAUTIONS:

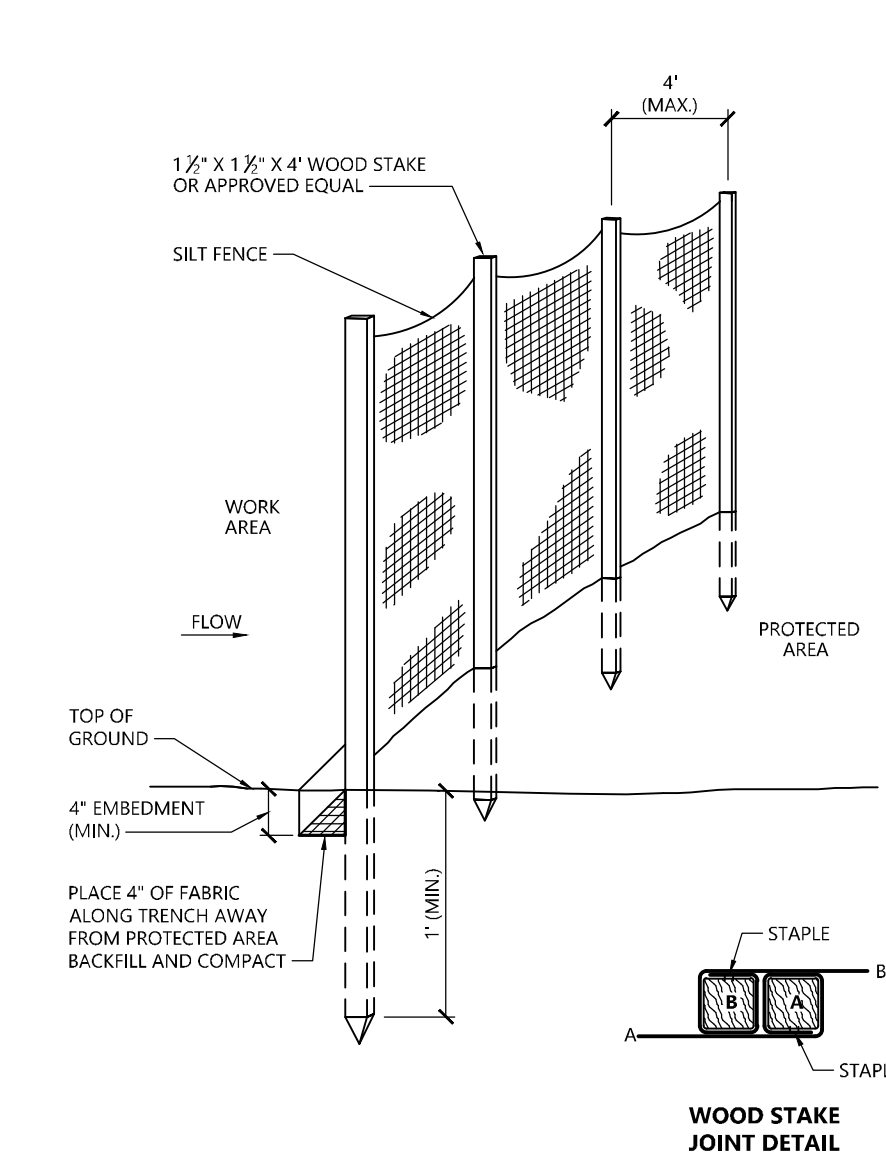
1. QUALIFIED HERPETOLOGIST SHALL PERFORM CONTRACTOR TRAINING TO HANDLE RARE, THREATENED, OR ENDANGERED SPECIES ON SITE, AND MAINTAIN A LOG BOOK OF THIS TRAINING AS WELL AS ANY DATES AND FINDINGS OF SWEEPS FOR SPECIES OR INSPECTIONS OF PROTECTION MEASURES FOR WILDLIFE.
2. IF CLEARING IS REQUIRED DURING NESTING SEASON (MID-MARCH TO SEPTEMBER) A SURVEY MUST BE CONDUCTED AND A 400' BUFFER MUST BE ESTABLISHED AROUND KESTREL NESTING SITES UNTIL THE YOUNG HAVE FLEDGED AND LEFT THE PROPERTY.
3. KESTREL BOXES SHOULD BE INSTALLED IN ANY REMAINING HABITAT ON THE SITE AT THE DIRECTION OF THE OWNER.
4. LIMIT INTERIOR AND EXTERIOR LIGHTING AND SECURITY LIGHTING SHOULD BE DOWN-SHIELDED.
5. ALL WORKERS SHALL BE APPRISED OF THE SPECIES DESCRIPTION AND TURTLES FOUND ON SITE SHALL NOT BE KILLED.
6. THE WORK AREA MUST BE SCANNED EACH DAY PRIOR TO INITIATION OF WORK FOR SPECIES.
7. THE QUALIFIED HERPETOLOGIST PERFORMING SWEEPS AND INVESTIGATIONS SHALL OBTAIN A SCIENTIFIC COLLECTOR'S PERMIT, AND PERFORM SWEEPS PRIOR TO CONTRACTOR MOBILIZATION AND TREE CLEARING.
8. ANY TURTLES DISCOVERED WITHIN THE WORK LIMITS SHOULD BE SAFELY MOVED TO OUTSIDE OF THE SILT FENCE.
9. A QUALIFIED BIOLOGIST SHALL PERFORM INSPECTIONS TO ENSURE PROTECTION GUIDELINES REMAIN IN EFFECT AND TO PREVENT TURTLES FROM BEING RUN OVER.
10. STAGING AND STORAGE AREAS SHALL BE SWEEPED AND ANY TURTLES DISCOVERED SHALL BE REMOVED AND RELOCATED.
11. EXTRA CARE SHALL BE TAKEN DURING EARLY MORNING AND LATE EVENING HOURS.
12. NO VEHICLES OR HEAVY MACHINERY SHALL BE PARKED OUTSIDE OF DELINEATED CONSTRUCTION WORK LIMITS.
13. ENTIRE WORK AREA SHALL HAVE MINIMUM 20 INCH HIGH SILT FENCE SURROUNDING AT ALL TIMES, AND SILT FENCE SHALL BE REMOVED AS EARLY AS PRACTICABLE UPON COMPLETION OF CONSTRUCTION AND WITHIN CONFINES OF CTDEEP STORMWATER GENERAL PERMIT.
14. IF TURTLE HABITATS ARE DISCOVERED, A BIOLOGIST APPROVED BY THE OWNER/DEVELOPER MUST BE CONTACTED TO PLAN THE SITE USE AND NESTING SITE MANAGEMENT.
15. ANY CONFIRMED SIGHTINGS OF ANY RARE, THREATENED, OR ENDANGERED SPECIES SHALL BE REPORTED AND DOCUMENTED TO CTDEEP WILDLIFE DIVISION.





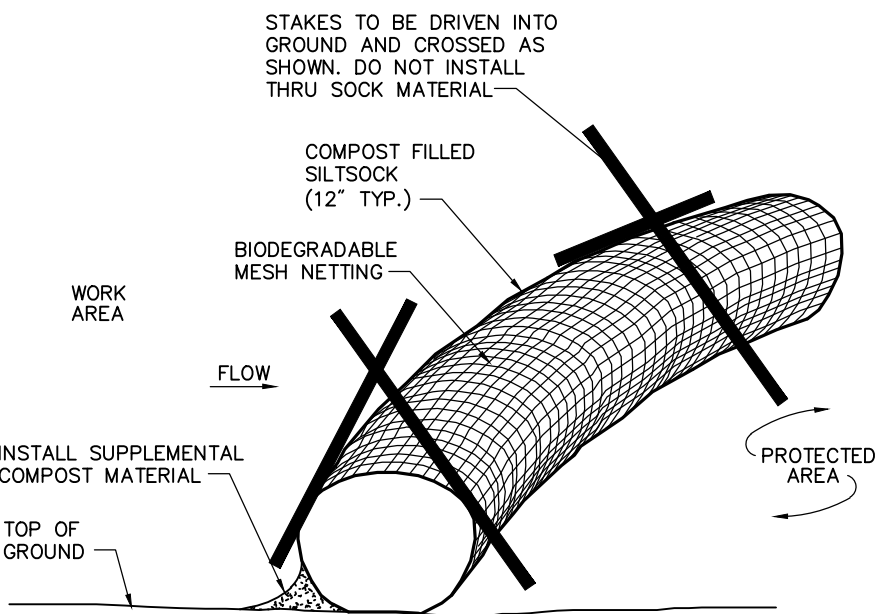
Straw Wattle Installation

N.T.S. Source: VHB 8/12 LD_658



Silt Fence Barrier

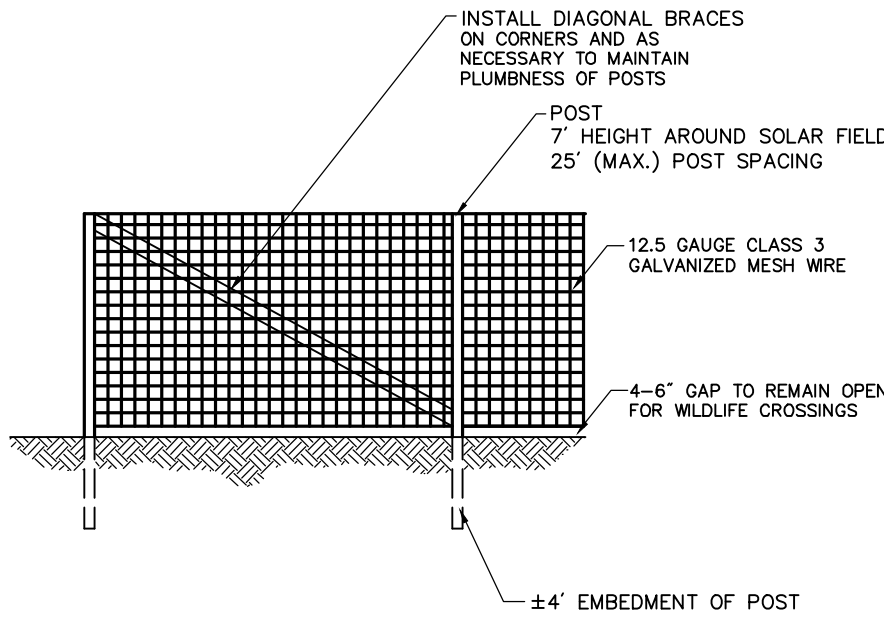
N.T.S. Source: VHB 1/16 LD_650



Compost Filter Sock (CFS)

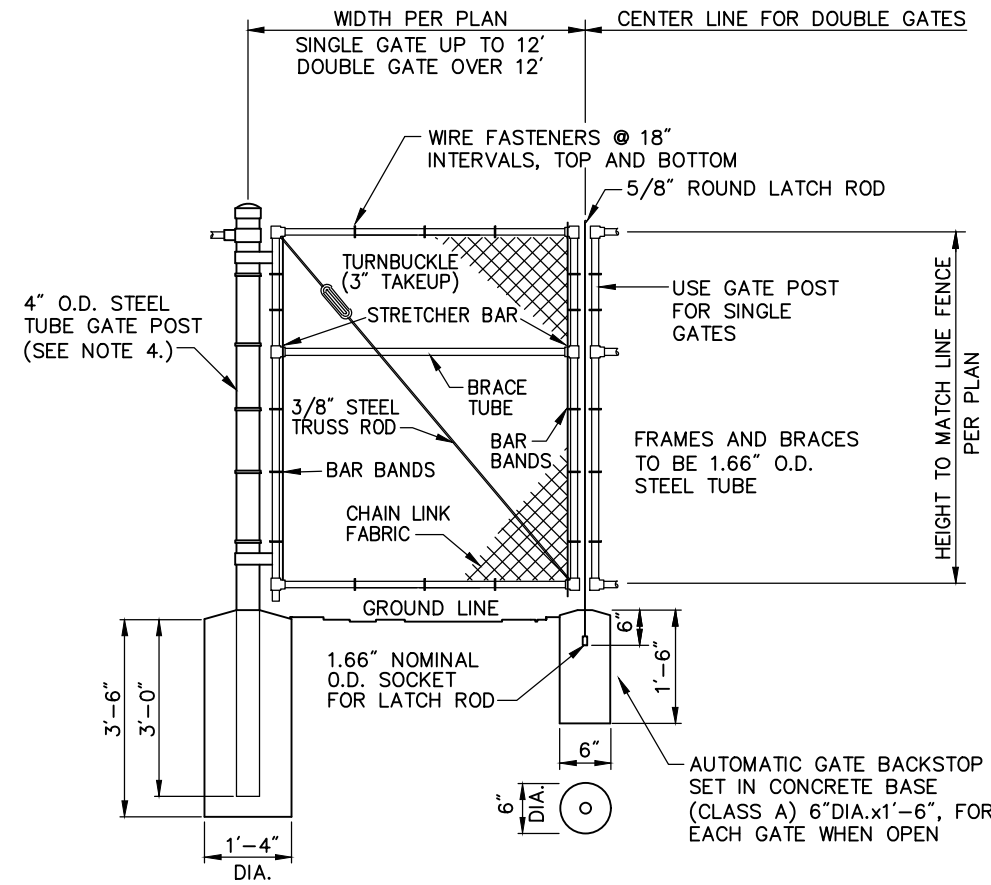
N.T.S. Source: VHB 8/12 LD_658

- Notes:
- SILT SOCK SHALL BE 12" DIAMETER FILTREXX SILT SOCK, OR APPROVED EQUAL.
 - SILT SOCKS SHALL OVERLAP A MINIMUM OF 12 INCHES.
 - SILT SOCK SHALL BE INSPECTED PERIODICALLY AND AFTER ALL STORM EVENTS, AND REPAIR OR REPLACEMENT SHALL BE PERFORMED PROMPTLY AS NEEDED.
 - COMPOST MATERIAL SHALL BE DISPERSED ON SITE, AS DETERMINED BY THE ENGINEER.
 - IF NON BIODEGRADABLE NETTING IS USED THE NETTING SHALL BE COLLECTED AND DISPOSED OF OFFSITE.



Agricultural Fence

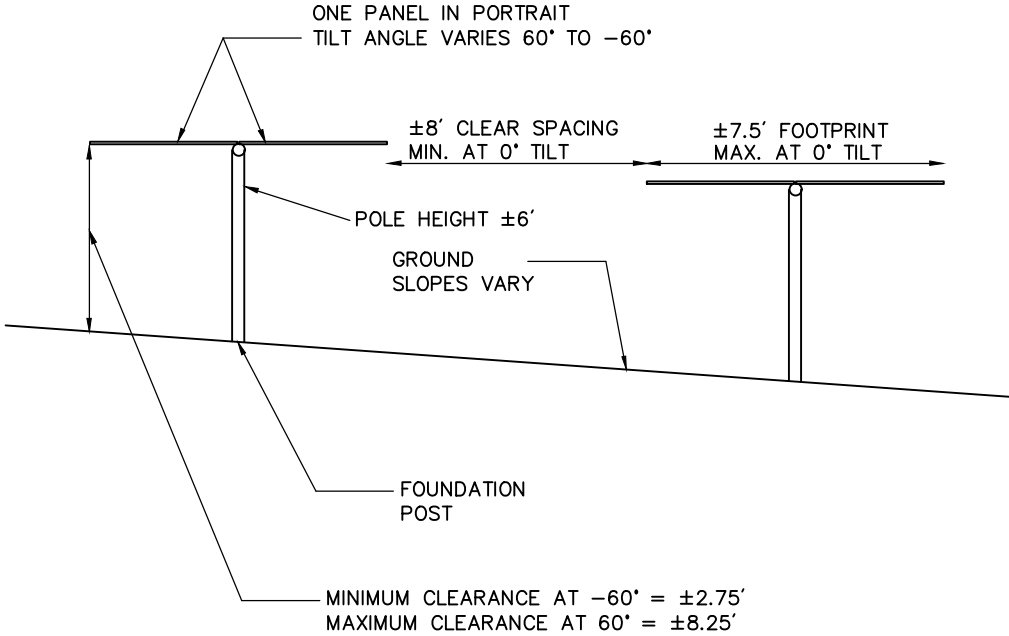
N.T.S. Source: By Others 6/08 LD_480



Chain Link Fence Gate

N.T.S. Source: VHB 6/08 LD_482

- Notes:
- CHAIN LINK FABRIC FOR GATES TO BE THE SAME AS REQUIRED FOR FENCE.
 - GATE POST BASE-PORTLAND CEMENT CONCRETE (3000 PSI).
 - FENCE FABRIC, POSTS, FRAMEWORKS, AND HARDWARE SHALL BE GALVANIZED STEEL OR BLACK VINYL (AS INDICATED ON PLANS) PER SPECIFICATIONS.
 - GATE POSTS TO BE USED ON EACH SIDE OF SINGLE AND DOUBLE GATE OPENINGS.



Cross Section of Tracking Panel Array

N.T.S. Source: VHB 7/20

- Notes:
- FINAL DETERMINATION OF PANEL TYPE, RACKING SYSTEM, AND FOUNDATION POSTS TO BE DETERMINED PENDING BEST AVAILABLE TECHNOLOGY AT TIME OF CONSTRUCTION AND STRUCTURAL GROUND TESTING.

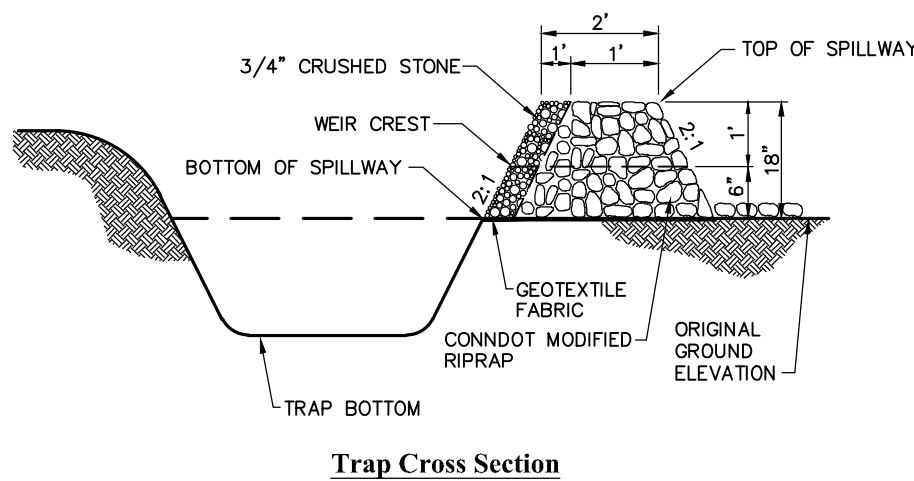


Danger and Site Facility Signs

N.T.S. Source: VHB 1/16

PHOTOVOLTAIC INSTALLATION
Site Location: 445 River Street, Windsor, CT
Owner: Verogy
Attn: Brad Parsons
124 LaSalle Road, 2nd Floor
West Hartford, CT 06107
IN CASE OF EMERGENCY CALL 911
WINDSOR POLICE DEPARTMENT - (860) 688-5273

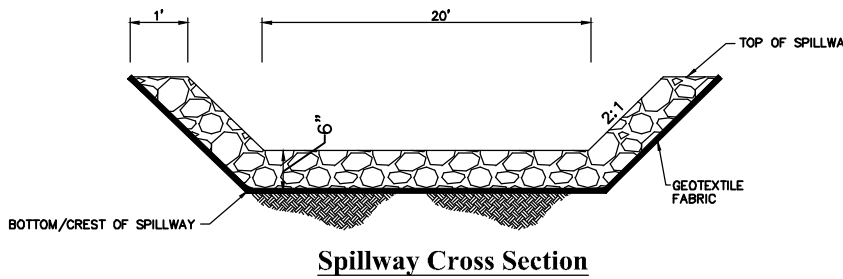
- Notes:
- THE SITE FACILITY SIGN IS A DRAFT SHOWING THE MINIMUM AMOUNT OF INFORMATION THAT WILL BE PROVIDED. SIGN WILL BE 18" X 24".
 - ALL SIGNS WILL BE MOUNTED ONTO THE CHAIN LINK FENCE.



Sediment Trap (TST)

N.T.S. Source: VHB

- NOTE:
- ALL VEGETATED SIDE SLOPES SHALL NOT EXCEED 3:1
 - STONE SLOPES OF EMBANKMENT SHALL BE STABILIZED BY EROSION CONTROL BLANKETS OR AS DIRECTED BY THE ENGINEER.
 - TRAP SHALL BE DRAINED AND CLEANED OF SEDIMENT ONCE SEDIMENT IS > 1' ABOVE TRAP BOTTOM.



Temporary Stormwater Basin Spillway

N.T.S. Source: VHB

- NOTE:
- ALL SIDE SLOPES SHALL NOT EXCEED 1:1 FOR SPILLWAY
 - STONE FOR SPILLWAY SHALL BE 8" MINUS RIPRAP
 - TOP OF EMBANKMENT SHALL BE 5' WIDTH
 - SIDE SLOPES OF EMBANKMENT SHALL BE STABILIZED BY EROSION CONTROL BLANKETS OR AS DIRECTED BY THE ENGINEER.

Windsor Solar One
445 River St
Windsor, Connecticut

No.	Revision	Date	Appvd.
1	CSC Public Hearing #2	2024-03-07	SJK
2	Landscape Details Update	2024-06-06	SJK
3	Wildlife Protection	2024-10-23	SJK
4	Issued for Construction	2025-01-08	SJK
5	Revised Interconnection	2025-04-16	SJK

Designed by	Checked by
DRB	SJK
Issued for	Date
Construction	January 8, 2025

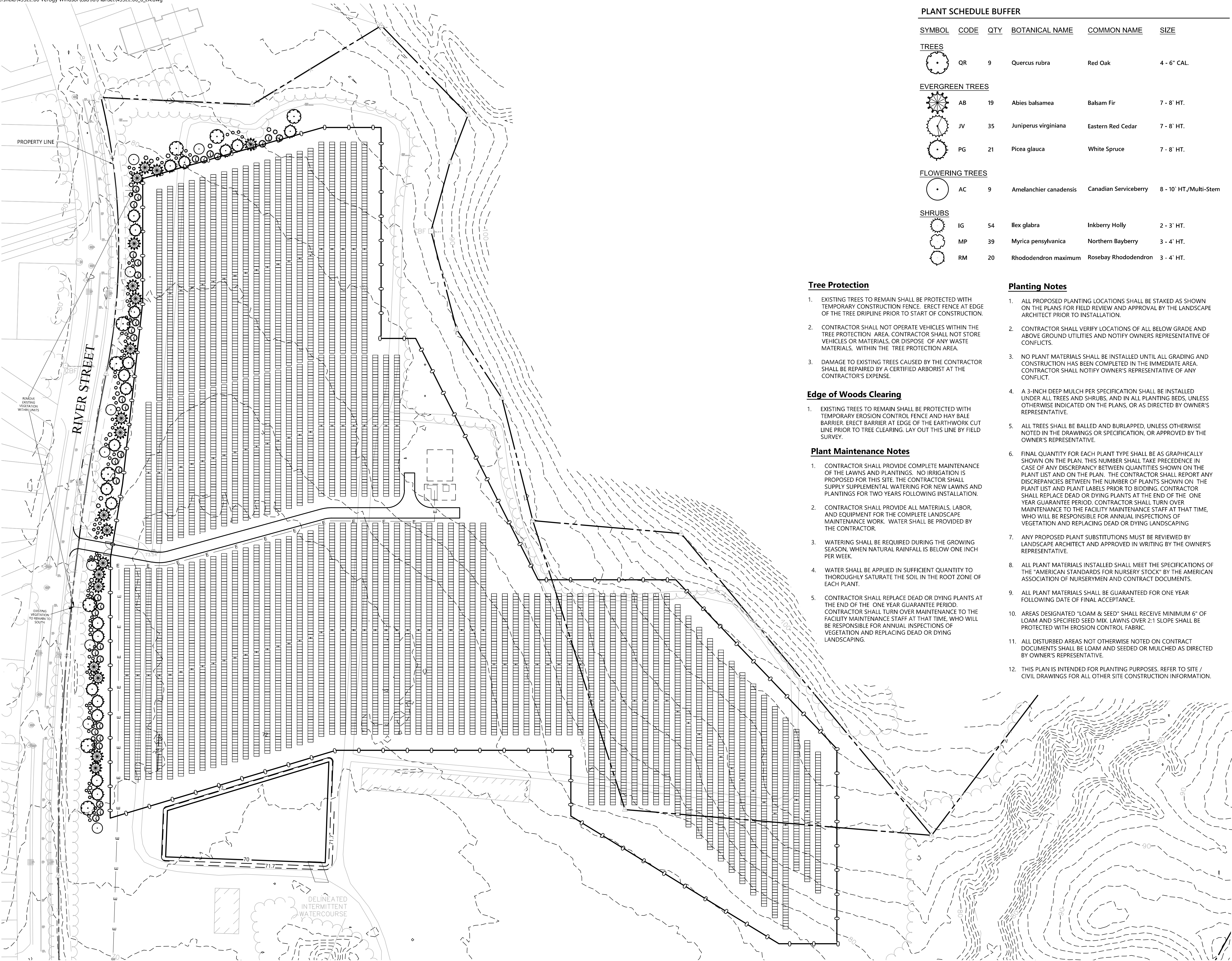


Drawing Number

C-5.0

Sheet of
5 7

Project Number
43322.00



PLANT SCHEDULE BUFFER

SYMBOL	CODE	QTY	BOTANICAL NAME	COMMON NAME	SIZE
TREES					
	QR	9	Quercus rubra	Red Oak	4 - 6" CAL.
EVERGREEN TREES					
	AB	19	Abies balsamea	Balsam Fir	7 - 8' HT.
	JV	35	Juniperus virginiana	Eastern Red Cedar	7 - 8' HT.
	PG	21	Picea glauca	White Spruce	7 - 8' HT.
FLOWERING TREES					
	AC	9	Amelanchier canadensis	Canadian Serviceberry	8 - 10' HT./Multi-Stem
SHRUBS					
	IG	54	Ilex glabra	Inkberry Holly	2 - 3' HT.
	MP	39	Myrica pensylvanica	Northern Bayberry	3 - 4' HT.
	RM	20	Rhododendron maximum	Rosebay Rhododendron	3 - 4' HT.

Tree Protection

- EXISTING TREES TO REMAIN SHALL BE PROTECTED WITH TEMPORARY CONSTRUCTION FENCE. ERECT FENCE AT EDGE OF THE TREE DRIFLINE PRIOR TO START OF CONSTRUCTION.
- CONTRACTOR SHALL NOT OPERATE VEHICLES WITHIN THE TREE PROTECTION AREA. CONTRACTOR SHALL NOT STORE VEHICLES OR MATERIALS, OR DISPOSE OF ANY WASTE MATERIALS, WITHIN THE TREE PROTECTION AREA.
- DAMAGE TO EXISTING TREES CAUSED BY THE CONTRACTOR SHALL BE REPAIRED BY A CERTIFIED ARBORIST AT THE CONTRACTOR'S EXPENSE.

Edge of Woods Clearing

- EXISTING TREES TO REMAIN SHALL BE PROTECTED WITH TEMPORARY EROSION CONTROL FENCE AND HAY BALE BARRIER. ERECT BARRIER AT EDGE OF THE EARTHWORK CUT LINE PRIOR TO TREE CLEARING. LAY OUT THIS LINE BY FIELD SURVEY.

Plant Maintenance Notes

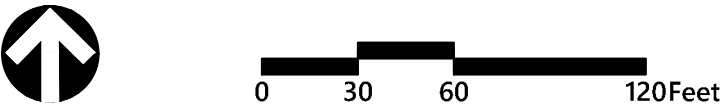
- CONTRACTOR SHALL PROVIDE COMPLETE MAINTENANCE OF THE LAWNS AND PLANTINGS. NO IRRIGATION IS PROPOSED FOR THIS SITE. THE CONTRACTOR SHALL SUPPLY SUPPLEMENTAL WATERING FOR NEW LAWNS AND PLANTINGS FOR TWO YEARS FOLLOWING INSTALLATION.
- CONTRACTOR SHALL PROVIDE ALL MATERIALS, LABOR, AND EQUIPMENT FOR THE COMPLETE LANDSCAPE MAINTENANCE WORK. WATER SHALL BE PROVIDED BY THE CONTRACTOR.
- WATERING SHALL BE REQUIRED DURING THE GROWING SEASON, WHEN NATURAL RAINFALL IS BELOW ONE INCH PER WEEK.
- WATER SHALL BE APPLIED IN SUFFICIENT QUANTITY TO THOROUGHLY SATURATE THE SOIL IN THE ROOT ZONE OF EACH PLANT.
- CONTRACTOR SHALL REPLACE DEAD OR DYING PLANTS AT THE END OF THE ONE YEAR GUARANTEE PERIOD. CONTRACTOR SHALL TURN OVER MAINTENANCE TO THE FACILITY MAINTENANCE STAFF AT THAT TIME, WHO WILL BE RESPONSIBLE FOR ANNUAL INSPECTIONS OF VEGETATION AND REPLACING DEAD OR DYING LANDSCAPING.

Planting Notes

- ALL PROPOSED PLANTING LOCATIONS SHALL BE STAKED AS SHOWN ON THE PLANS FOR FIELD REVIEW AND APPROVAL BY THE LANDSCAPE ARCHITECT PRIOR TO INSTALLATION.
- CONTRACTOR SHALL VERIFY LOCATIONS OF ALL BELOW GRADE AND ABOVE GROUND UTILITIES AND NOTIFY OWNERS REPRESENTATIVE OF CONFLICTS.
- NO PLANT MATERIALS SHALL BE INSTALLED UNTIL ALL GRADING AND CONSTRUCTION HAS BEEN COMPLETED IN THE IMMEDIATE AREA. CONTRACTOR SHALL NOTIFY OWNER'S REPRESENTATIVE OF ANY CONFLICT.
- A 3-INCH DEEP MULCH PER SPECIFICATION SHALL BE INSTALLED UNDER ALL TREES AND SHRUBS, AND IN ALL PLANTING BEDS, UNLESS OTHERWISE INDICATED ON THE PLANS, OR AS DIRECTED BY OWNER'S REPRESENTATIVE.
- ALL TREES SHALL BE BALLED AND BURLAPPED, UNLESS OTHERWISE NOTED IN THE DRAWINGS OR SPECIFICATION, OR APPROVED BY THE OWNER'S REPRESENTATIVE.
- FINAL QUANTITY FOR EACH PLANT TYPE SHALL BE AS GRAPHICALLY SHOWN ON THE PLAN. THIS NUMBER SHALL TAKE PRECEDENCE IN CASE OF ANY DISCREPANCY BETWEEN QUANTITIES SHOWN ON THE PLANT LIST AND ON THE PLAN. THE CONTRACTOR SHALL REPORT ANY DISCREPANCIES BETWEEN THE NUMBER OF PLANTS SHOWN ON THE PLANT LIST AND PLANT LABELS PRIOR TO BIDDING. CONTRACTOR SHALL REPLACE DEAD OR DYING PLANTS AT THE END OF THE ONE YEAR GUARANTEE PERIOD. CONTRACTOR SHALL TURN OVER MAINTENANCE TO THE FACILITY MAINTENANCE STAFF AT THAT TIME, WHO WILL BE RESPONSIBLE FOR ANNUAL INSPECTIONS OF VEGETATION AND REPLACING DEAD OR DYING LANDSCAPING.
- ANY PROPOSED PLANT SUBSTITUTIONS MUST BE REVIEWED BY LANDSCAPE ARCHITECT AND APPROVED IN WRITING BY THE OWNER'S REPRESENTATIVE.
- ALL PLANT MATERIALS INSTALLED SHALL MEET THE SPECIFICATIONS OF THE "AMERICAN STANDARDS FOR NURSERY STOCK" BY THE AMERICAN ASSOCIATION OF NURSERYMEN AND CONTRACT DOCUMENTS.
- ALL PLANT MATERIALS SHALL BE GUARANTEED FOR ONE YEAR FOLLOWING DATE OF FINAL ACCEPTANCE.
- AREAS DESIGNATED "LOAM & SEED" SHALL RECEIVE MINIMUM 6" OF LOAM AND SPECIFIED SEED MIX. LAWNS OVER 2:1 SLOPE SHALL BE PROTECTED WITH EROSION CONTROL FABRIC.
- ALL DISTURBED AREAS NOT OTHERWISE NOTED ON CONTRACT DOCUMENTS SHALL BE LOAM AND SEEDED OR MULCHED AS DIRECTED BY OWNER'S REPRESENTATIVE.
- THIS PLAN IS INTENDED FOR PLANTING PURPOSES. REFER TO SITE / CIVIL DRAWINGS FOR ALL OTHER SITE CONSTRUCTION INFORMATION.



100 Great Meadow Road
Suite 200
Wethersfield, CT 06109
860.807.4300



Windsor Solar One
445 River St
Windsor, Connecticut

No.	Revision	Date	Apprd.
1	CSC Public Hearing #2	2024-03-07	SJK
2	Landscape Details Update	2024-06-06	SJK
3	Wildlife Protection	2024-10-23	SJK
4	Issued for Construction	2025-01-08	SJK
5	Revised Interconnection	2025-04-16	SJK

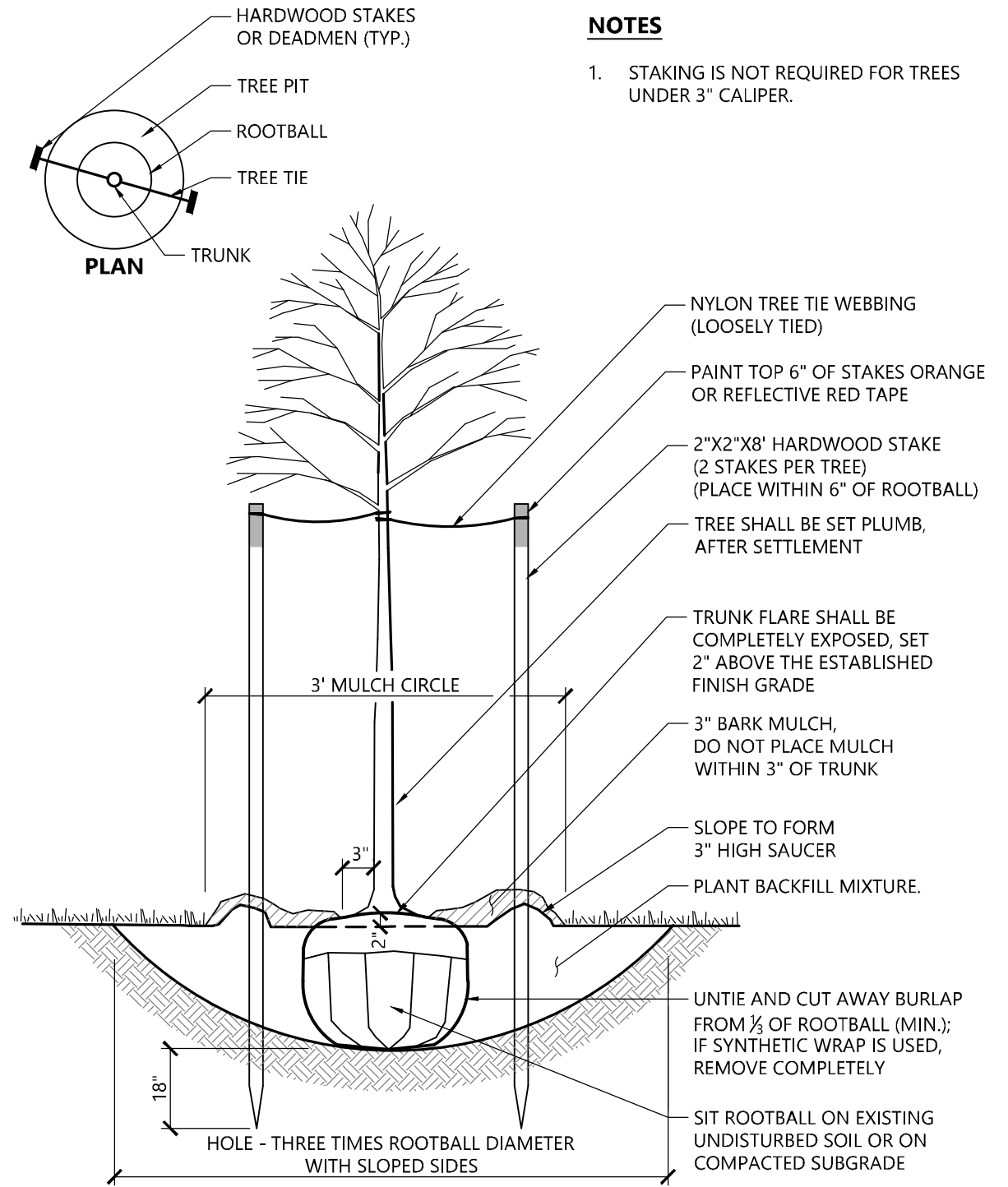
Designed by	Checked by
DRB	SJK
Issued for	Date
Construction	January 8, 2025

Drawing Title

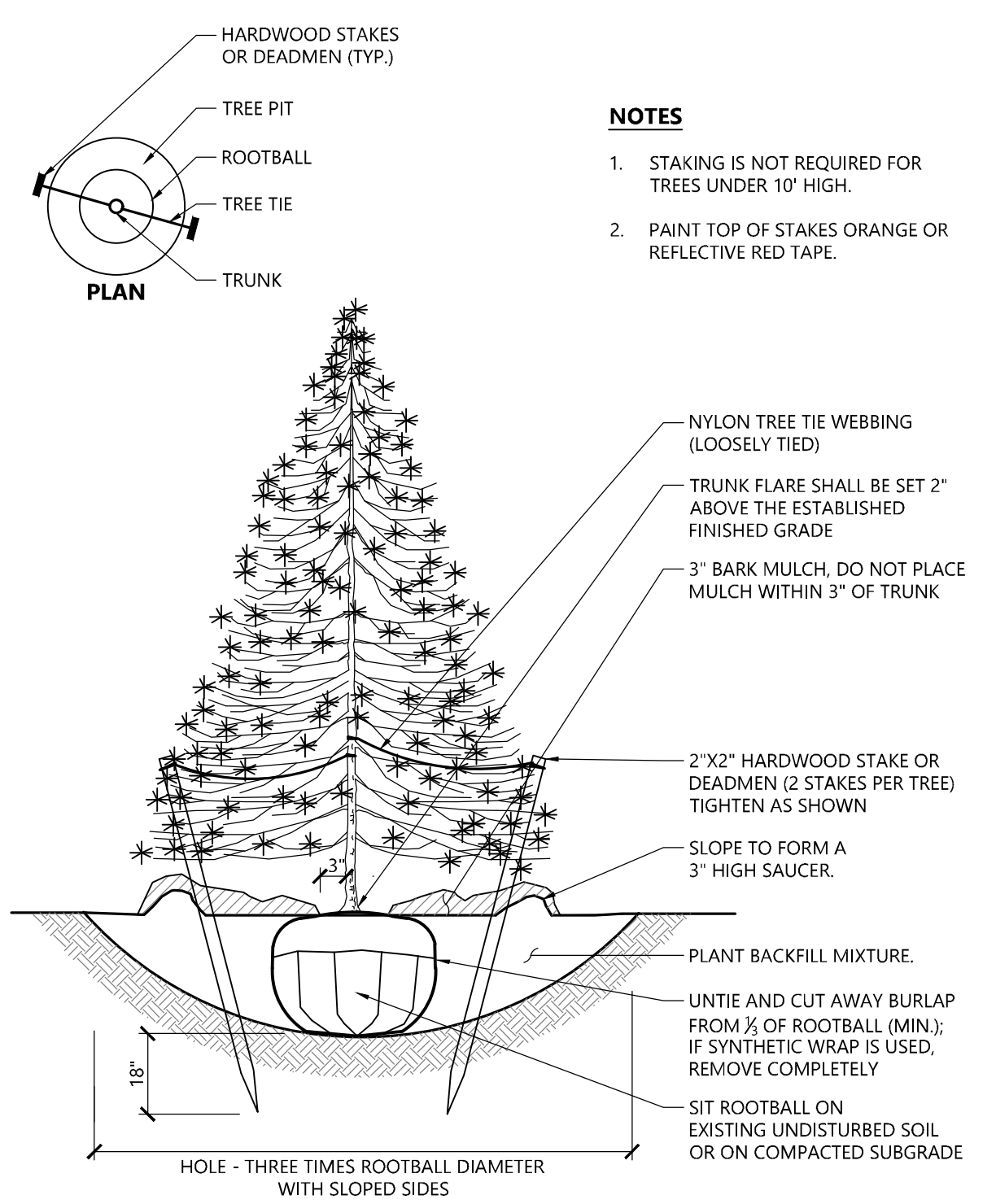
Planting Plan

Drawing Number

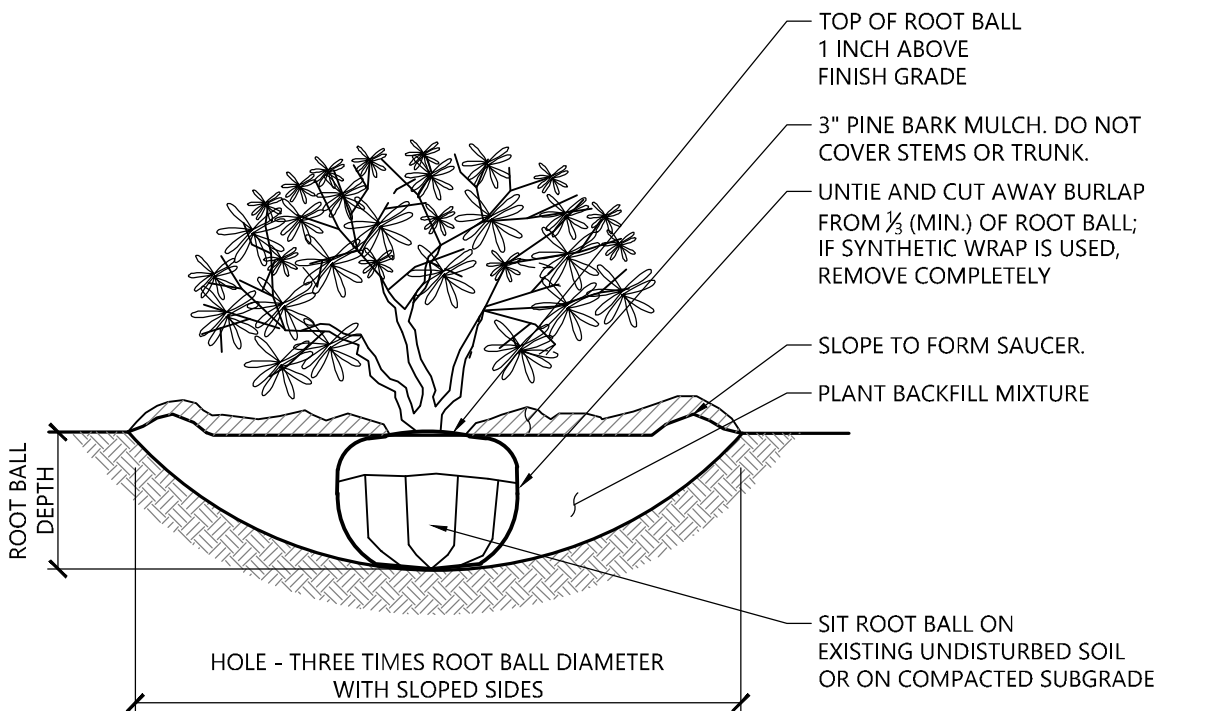
L-6.1



Tree Planting (For Trees Under 4" Caliper) 9/18
N.T.S. Source: VHB LD_602



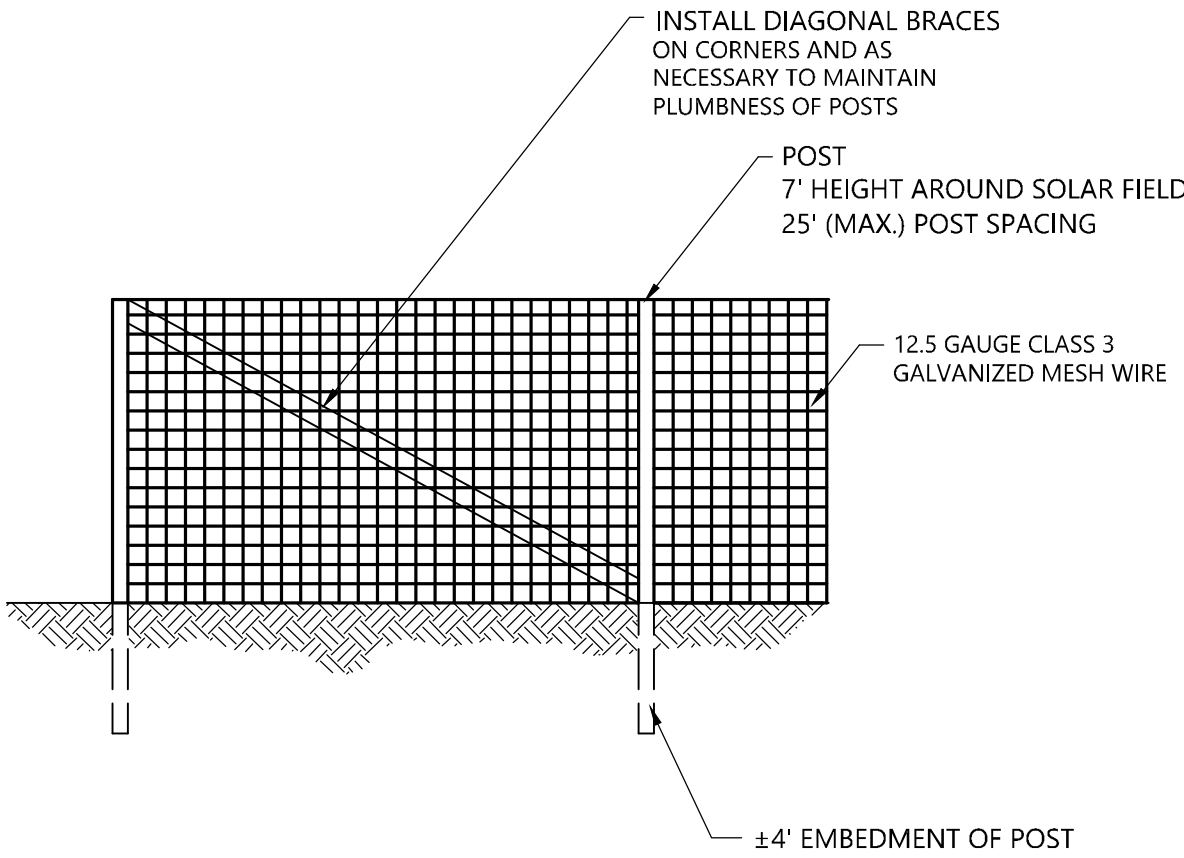
Evergreen Tree Planting 1/16
N.T.S. Source: VHB LD_604



Shrub Planting 1/16
N.T.S. Source: VHB LD_600

NOTES

- LOOSEN ROOTS AT THE OUTER EDGE OF ROOTBALL OF CONTAINER GROWN SHRUBS.



- NOTES:**
- FINAL DESIGN OF FENCE TO BE DETERMINED.
 - CONTRACTOR TO PROVIDE SHOP DRAWINGS OF FENCE TO BE APPROVED PRIOR TO INSTALLATION.
 - POST HOLES TO BE AUGURED PRIOR TO POST INSTALLATION.
 - ALL POSTS TO BE PLUMB IN ALL DIRECTIONS.
 - INSTALL STAINLESS STEEL TIE WIRES AT 15" INTERVALS.
 - DIAGONAL BRACING TO BE INSTALLED AS REQUIRED TO KEEP POSTS PLUMB WHEN FORCE IS TENSIONED.
 - FORCE FABRIC TO BE TENSIONED TO ELIMINATE SAGS.

Agricultural Fence 6/08
N.T.S. Source: By Others REV LD_480

<div><div><div>ERNST</div><div>SEEDS</div></div><div><div>Ernst Conservation Seeds</div><div>8884 Mercer Pike</div><div>Meadville, PA 16335</div><div>(800) 873-3321 Fax (814) 336-5191</div><div>www.ernstseed.com</div></div></div>			
Date: April 14, 2021			
Fuzz & Buzz Mix - Premium - ERNMX-147			
Botanical Name		Common Name	Price/lb
24.20 % <i>Lolium perenne</i> , 'Crave', Tetraploid		Perennial Ryegrass, 'Crave', Tetraploid	3.48
17.70 % <i>Dactylis glomerata</i> , 'Pennlate'		Orchardgrass, 'Pennlate'	3.00
17.70 % <i>Festuca elatior</i>		Meadow Fescue	4.80
17.70 % <i>Poa pratensis</i> , 'Ginger'		Kentucky Bluegrass, 'Ginger' (pasture type)	3.36
5.40 % <i>Trifolium hybridum</i>		Alfalfa Clover	3.90
4.90 % <i>Trifolium incarnatum</i> , Variety Not Stated		Crimson Clover, Variety Not Stated	1.92
4.50 % <i>Trifolium pratense</i> , Medium, Variety Not Stated		Red Clover, Medium, Variety Not Stated	3.00
2.00 % <i>Lotus corniculatus</i> , 'Leo'		Bird's Foot Trefoil, 'Leo'	7.50
1.30 % <i>Chrysanthemum leucanthemum</i>		Oxeye Daisy	33.60
1.30 % <i>Cichorium intybus</i>		Blue Chicory	19.20
0.80 % <i>Chamaecrista fasciculata</i> , PA Ecotype		Partridge Pea, PA Ecotype	7.20
0.40 % <i>Aster oblongifolius</i> , PA Ecotype		Aromatic Aster, PA Ecotype	336.00
0.40 % <i>Aster prenanthoides</i> , PA Ecotype		Zigzag Aster, PA Ecotype	432.00
0.40 % <i>Coreopsis lanceolata</i>		Lanceleaf Coreopsis	28.80
0.40 % <i>Tradescantia ohimensis</i> , PA Ecotype		Ohio Spiderwort, PA Ecotype	192.00
0.40 % <i>Zizia aurea</i>		Golden Alexanders	288.00
0.30 % <i>Solidago nemoralis</i> , PA Ecotype		Gray Goldenrod, PA Ecotype	336.00
0.10 % <i>Asclepias syriaca</i>		Common Milkweed	163.20
0.10 % <i>Penstemon hirsutus</i>		Hairy Beardtongue	480.00
100.00 %		Mix Price/lb Bulk:	\$10.91
Seeding Rate: Expect to apply about 42 lbs per acre with a cover crop of annual ryegrass at 12 lbs/acre.			
Forage & Pasture Sites; Solar Sites			

1 FUZZ & BUZZ MIX
DN-2 SCALE : N.T.S.

Seed Mixture 6/24
N.T.S. Source: By Others N/A

Windsor Solar One

445 River St Windsor, Connecticut

No.	Revision	Date	Apprvd.
1	CSC Public Hearing #2	2024-03-07	SJK
2	Landscape Details Update	2024-06-06	SJK
3	Wildlife Protection	2024-10-23	SJK
4	Issued for Construction	2025-01-08	SJK
5	Revised Interconnection	2025-04-16	SJK

Designed by	Checked by
DRB	SJK

Issued for _____ Date _____

Construction January 8, 2025

Drawing Title

Landscape Details

Drawing Number

L-6.2

Sheet 7 of 7

Project Number
43322.00

