




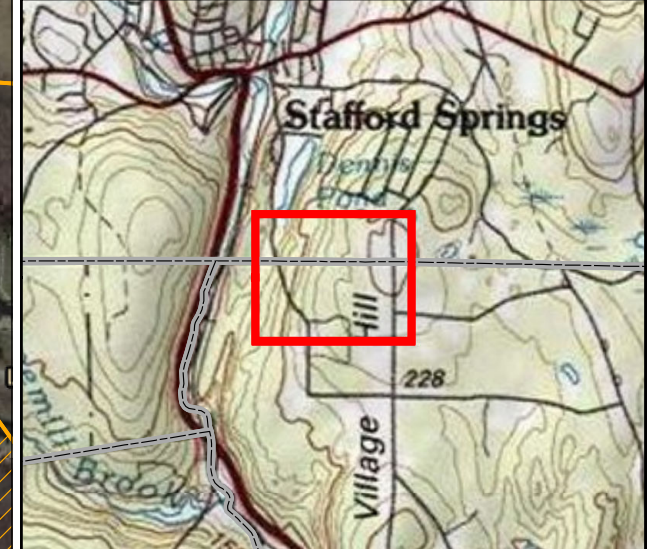
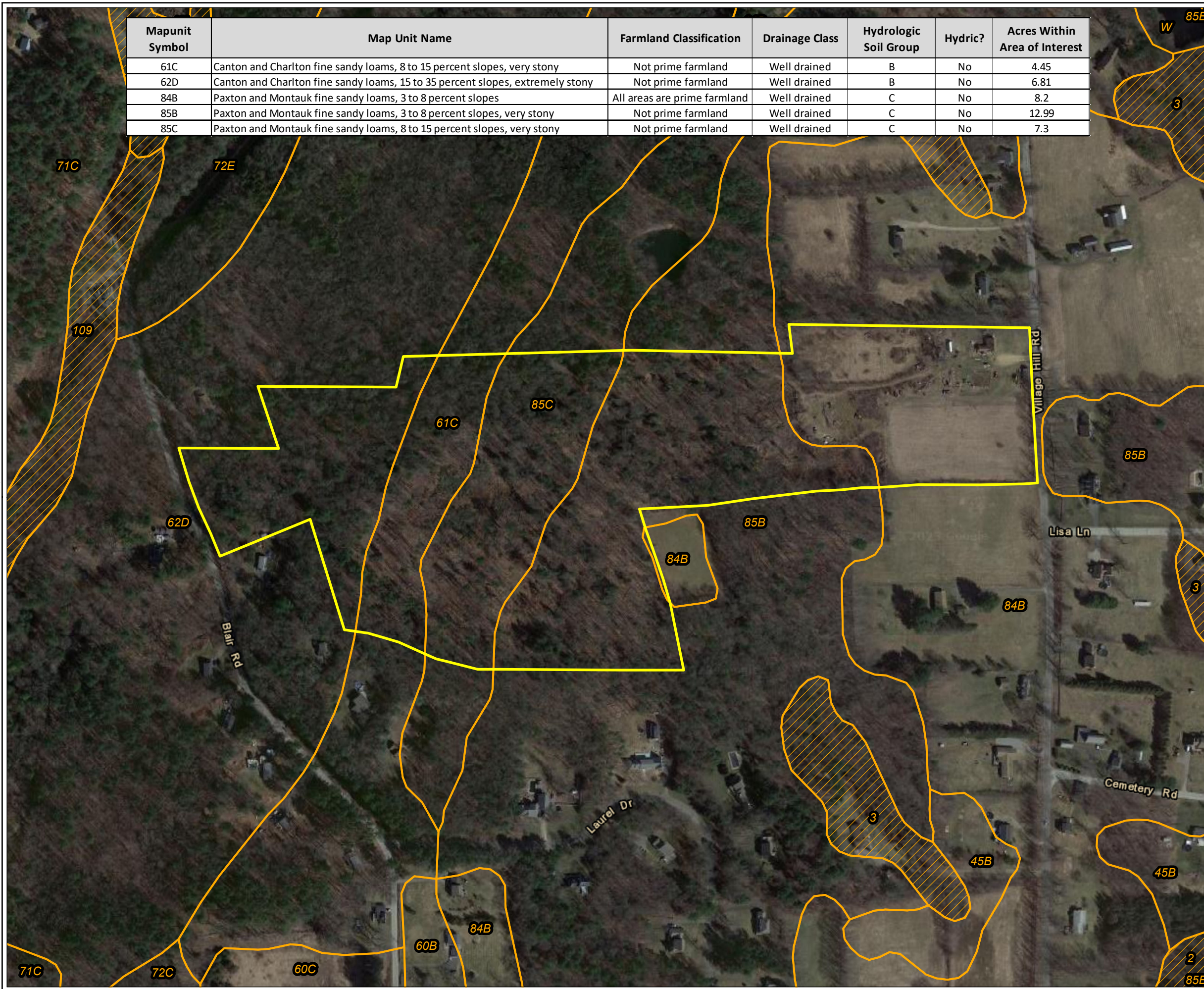
Coordinate System: NAD 1983 StatePlane Connecticut FIPS 0600 Feet (Foot US)
Map Rotation: 0

Plot Date: 6/28/2023 09:15:18 AM by DREWKENWORTHY -- LAYOUT: ANSIB(11"x17")
Path: C:\FLYCATCHER\Projects\KeyCapture\KCE_Wilmington\CTS_Petition_Fig7_NRCS_11x17L.mxd

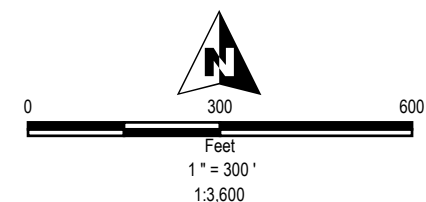
Mapunit Symbol	Map Unit Name	Farmland Classification	Drainage Class	Hydrologic Soil Group	Hydric?	Acres Within Area of Interest
61C	Canton and Charlton fine sandy loams, 8 to 15 percent slopes, very stony	Not prime farmland	Well drained	B	No	4.45
62D	Canton and Charlton fine sandy loams, 15 to 35 percent slopes, extremely stony	Not prime farmland	Well drained	B	No	6.81
84B	Paxton and Montauk fine sandy loams, 3 to 8 percent slopes	All areas are prime farmland	Well drained	C	No	8.2
85B	Paxton and Montauk fine sandy loams, 3 to 8 percent slopes, very stony	Not prime farmland	Well drained	C	No	12.99
85C	Paxton and Montauk fine sandy loams, 8 to 15 percent slopes, very stony	Not prime farmland	Well drained	C	No	7.3

LEGEND

-  HOST PARCEL
- NRCS SOIL BY DRAINAGE GROUP
-  EXCESSIVELY DRAINED; MODERATELY WELL DRAINED; SOMEWHAT EXCESSIVELY DRAINED; WELL DRAINED
-  POORLY DRAINED; VERY POORLY DRAINED



NOTES:
1 BASEMAP IMAGERY FROM ESRI/NAIP "WORLD IMAGERY" SERVICE LAYER.
2 NRCS SOIL DATA ACQUIRED FROM ESRI SSURGO DOWNLOADER OCTOBER 2022.



PROJECT: **KEY CAPTURE ENERGY
CT 5 BATTERY STORAGE PROJECT
WILLINGTON, TOLLAND COUNTY, CT**

TITLE: **NRCS SOIL SURVEY**

DRAWN BY: D. KENWORTHY PROJ NO.: 22-F002
CHECKED BY: K. NICKERSON
MONTH: JUNE
YEAR: 2023

FIGURE 7



FILE NO: KCE_WilmingtonCTS_Petition_Fig7_NRCS_11x17L.mxd