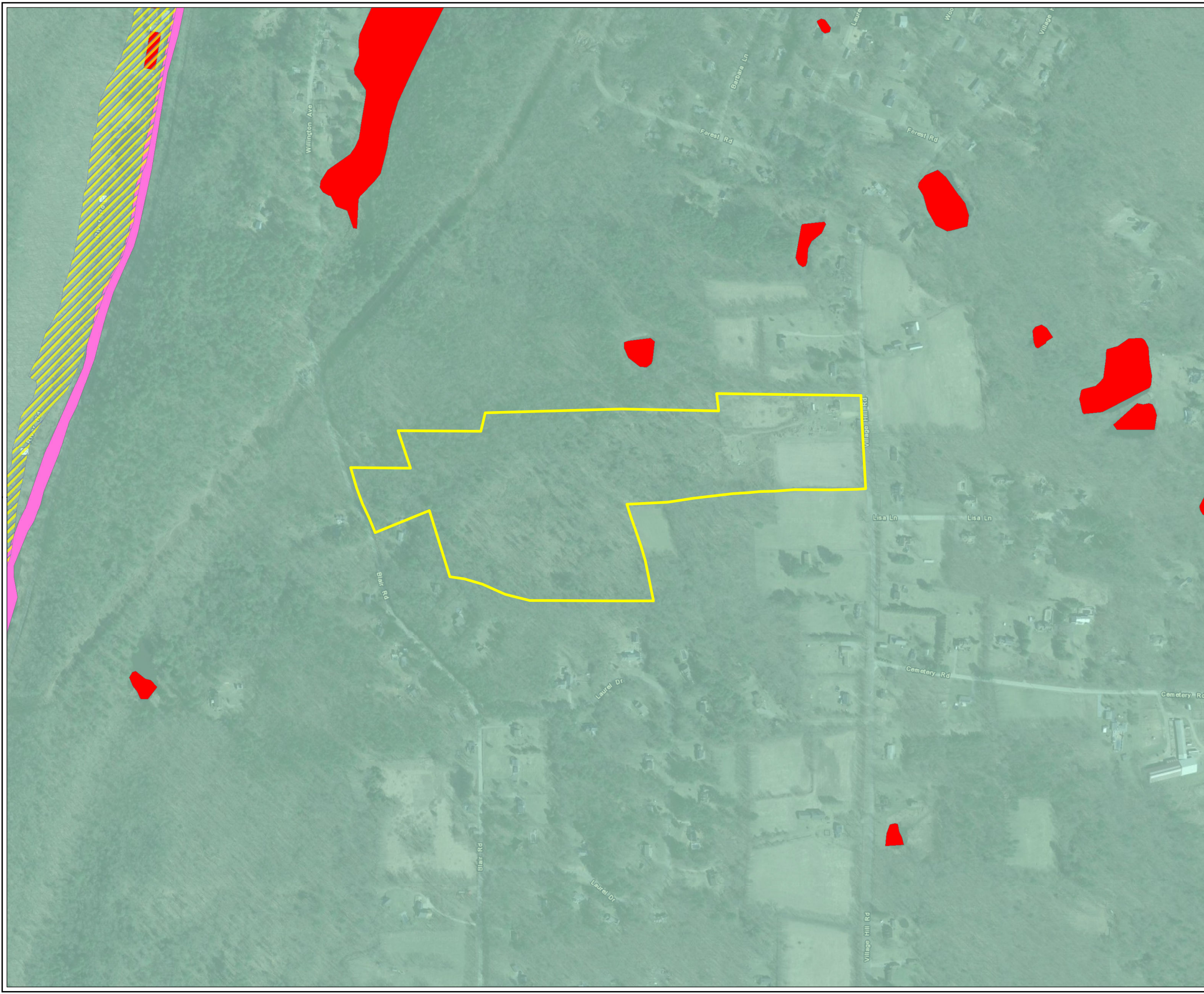


Coordinate System: NAD 1983 StatePlane Connecticut FIPS 0600 Feet (Foot US)
 Map Rotation: 0

Plot Date: 6/28/2023 07:55:04 AM by DREWKENWORTHY -- LAYOUT: ANSIB(11"x17")
 Path: C:\FLYCATCHER\Projects\KeyCapture\KCE_WillingtonCT5_Petition_Fig6_Water_11x17L.mxd



LEGEND

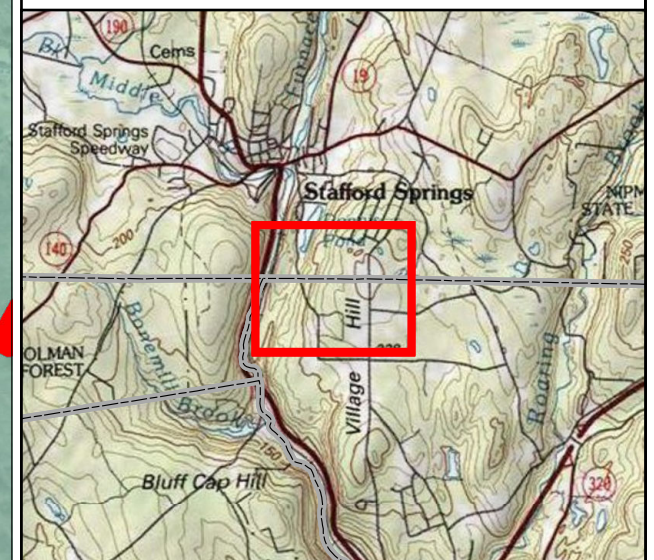
- HOST PARCEL
- FEMA FLOODPLAIN
- DRINKING WATER WATERSHED
- AQUIFER PROTECTION AREA

SURFACE WATER QUALITY CLASSIFICATION

- A
- B

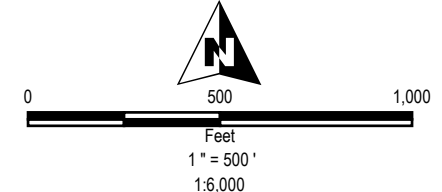
GROUND WATER QUALITY CLASSIFICATION

- GA



NOTES:

- 1 BASEMAP IMAGERY FROM ESRI/NAIP "WORLD IMAGERY" SERVICE LAYER.
- 2 DRINKING WATER WATERSHEDS AND AQUIFER PROTECTION DISTRICTS ARE NOT PRESENT WITHIN THE MAP EXTENT.
- 3 FEMA FLOODPLAIN INFORMATION DIGITIZED FROM RELEVANT COMMUNITY PANELS.



PROJECT: **KEY CAPTURE ENERGY
 CT 5 BATTERY STORAGE PROJECT
 WILLINGTON, TOLLAND COUNTY, CT**

TITLE: **WATER RESOURCES**

DRAWN BY:	D. KENWORTHY	PROJ NO.:	22-F002
CHECKED BY:	K. NICKERSON	FIGURE 6	
MONTH:	JUNE		
YEAR:	2023		

FILE NO.:	KCE_WillingtonCT5_Petition_Fig6_Water_11x17L.mxd