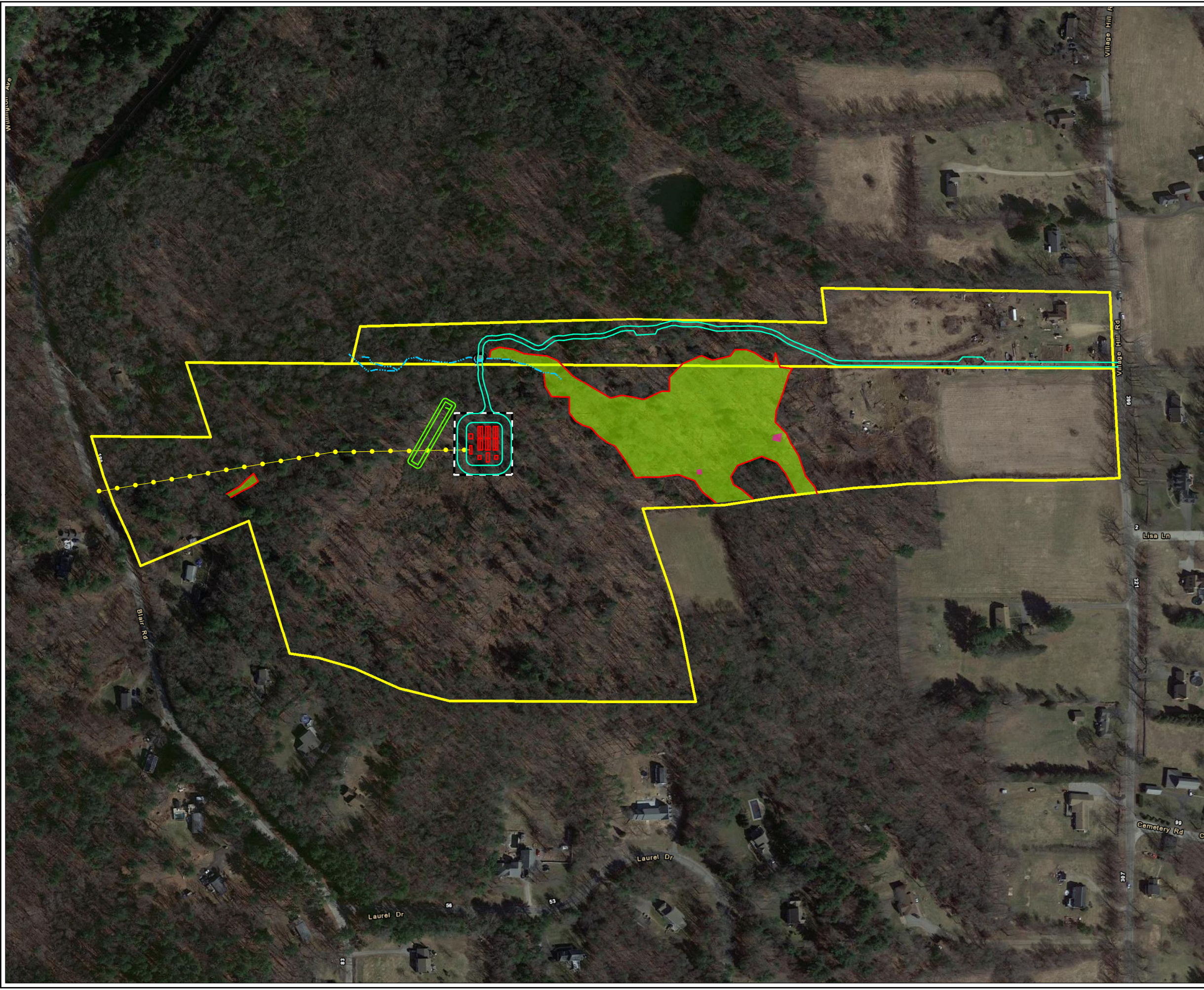
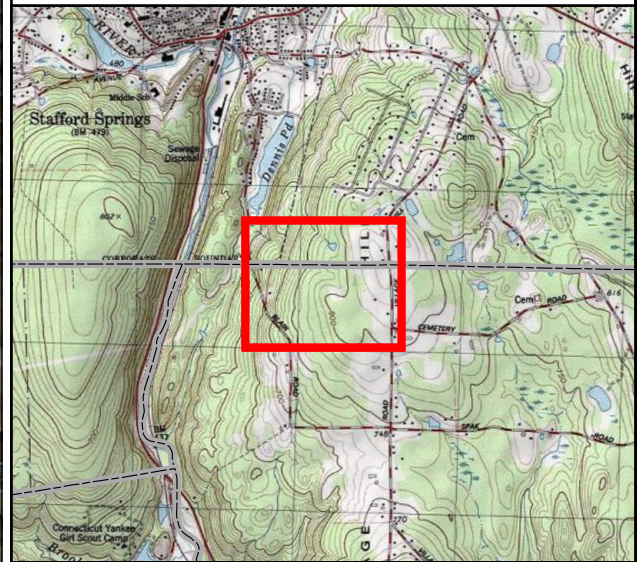


Coordinate System: NAD 1983 StatePlane Connecticut FIPS 0600 Feet (Foot US)  
 Map Rotation: 0

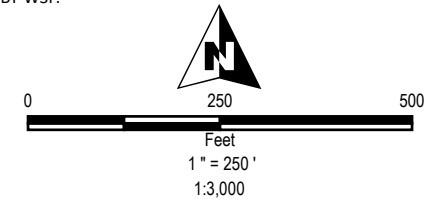
Plot Date: 8/30/2023 14:42:43 PM by DREWKENWORTHY -- LAYOUT: ANSI B(11"x17")  
 Path: C:\FLYCATCHER\Projects\KeyCapture\KCE\_Wilmington\CTS\_Petition\_Fig4\_PropCon\_11x17L.mxd



- LEGEND**
- HOST PARCELS
  - CULVERT
  - DELINEATED INTERMITTENT STREAM
  - DELINEATED WETLAND BOUNDARY
  - VERNAL POOL BASIN
  - DELINEATED WETLAND
  - ACCESS ROAD
  - SECURITY FENCE
  - STORMWATER BASIN
  - BATTERY STORAGE CONTAINER / EQUIPMENT PAD
  - INTERCONNECTION ROUTE



- NOTES:**
- 1 BASEMAP IMAGERY FROM ESRI/NAIP "WORLD IMAGERY" SERVICE LAYER.
  - 2 HOST PARCEL BOUNDARY BASED ON ALTA/NSPS LAND TITLE SURVEY PROVIDED BY WSP.



PROJECT: **KEY CAPTURE ENERGY  
 CT 5 BATTERY STORAGE PROJECT  
 WILLINGTON, TOLLAND COUNTY, CT**

TITLE: **PROPOSED CONDITIONS**

DRAWN BY: D. KENWORTHY	PROJ NO.: 22-F002
CHECKED BY: K. NICKERSON	<b>FIGURE 4</b>
MONTH: AUGUST	
YEAR: 2023	

FILE NO: KCE_WilmingtonCTS_Petition_Fig4_PropCon_11x17L.mxd	