

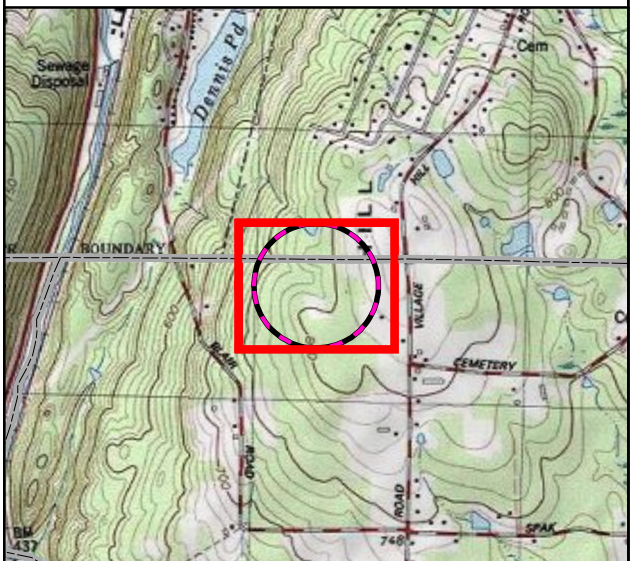
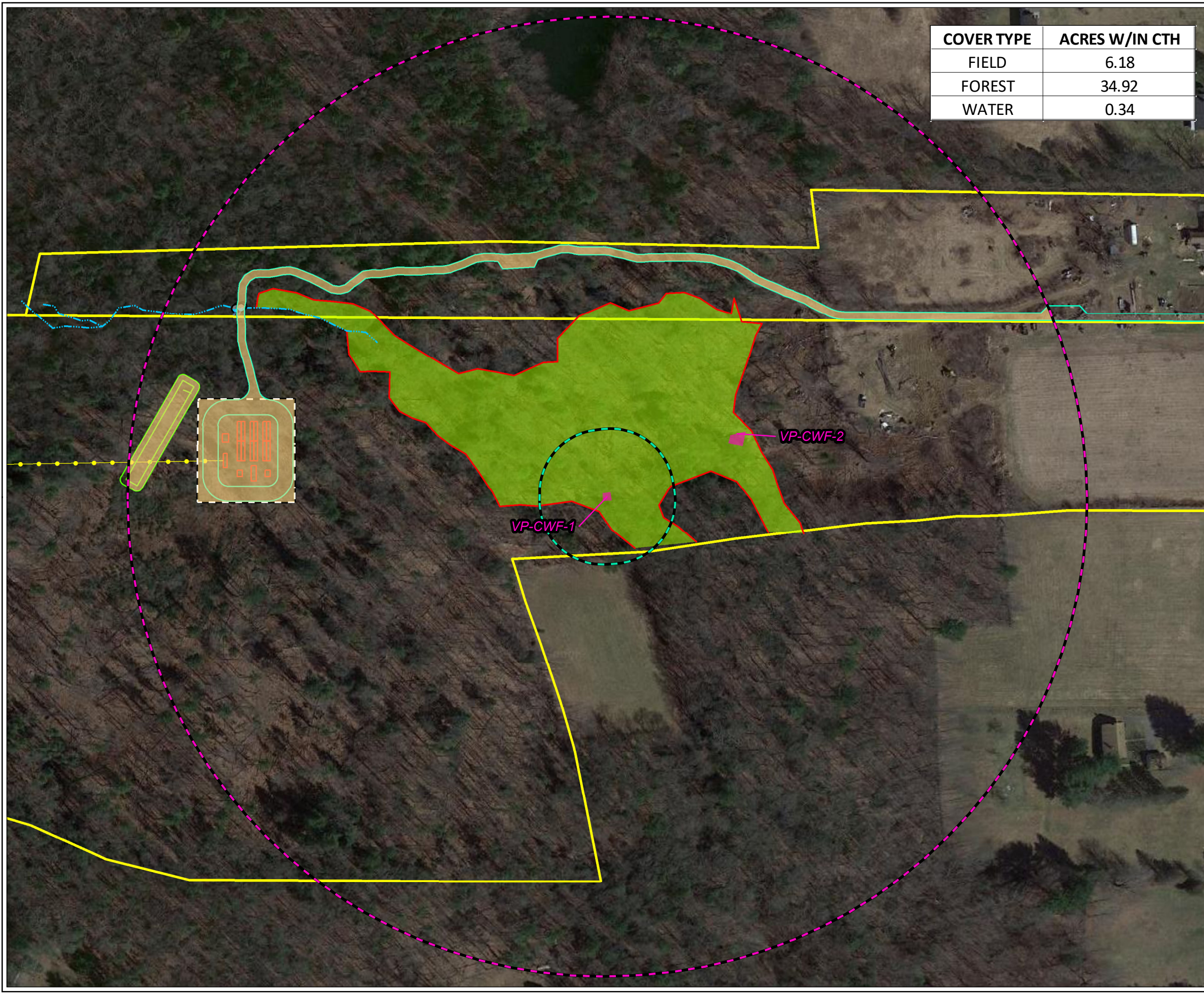
Coordinate System: NAD 1983 StatePlane Connecticut FIPS 0600 Feet (Foot US)
Map Rotation: 0

Plot Date: 11/14/2023 10:11:37 PM by DREWKENWORTHY -- LAYOUT: ANSIB(11"x17")
Path: C:\FLYCATCHER\Projects\KeyCapture\KCE_Willington\CTS_ROG_57C_VP1CTH_Fig1B_PostCon_11x17L.mxd

COVER TYPE	ACRES W/IN CTH
FIELD	6.18
FOREST	34.92
WATER	0.34

LEGEND

- HOST PARCELS
- CULVERT
- DELINEATED INTERMITTENT STREAM
- DELINEATED WETLAND BOUNDARY
- VERNAL POOL BASIN
- DELINEATED WETLAND
- ACCESS ROAD
- SECURITY FENCE
- STORMWATER BASIN
- BATTERY STORAGE CONTAINER / EQUIPMENT PAD
- INTERCONNECTION ROUTE
- 750' CRITICAL TERRESTRIAL HABITAT (41.44 AC.)
- 100' VERNAL POOL ENVELOPE
- PROJECT FOOTPRINT WITHIN CTH (1.17 AC.)



NOTES:

- 1 BASEMAP IMAGERY FROM ESRI/NAIP "WORLD IMAGERY" SERVICE LAYER.
- 2 HOST PARCEL BOUNDARY BASED ON ALTA/NSPS LAND TITLE SURVEY PROVIDED BY WSP.

0 150 300
Feet
1" = 150'
1:1,800

PROJECT: **KEY CAPTURE ENERGY
CT 5 BATTERY STORAGE PROJECT
WILLINGTON, TOLLAND COUNTY, CT**

TITLE: **INTERROGATORY 57C
VP-CWF-1 CRITICAL TERRESTRIAL HABITAT
POST CONSTRUCTION CONDITIONS**

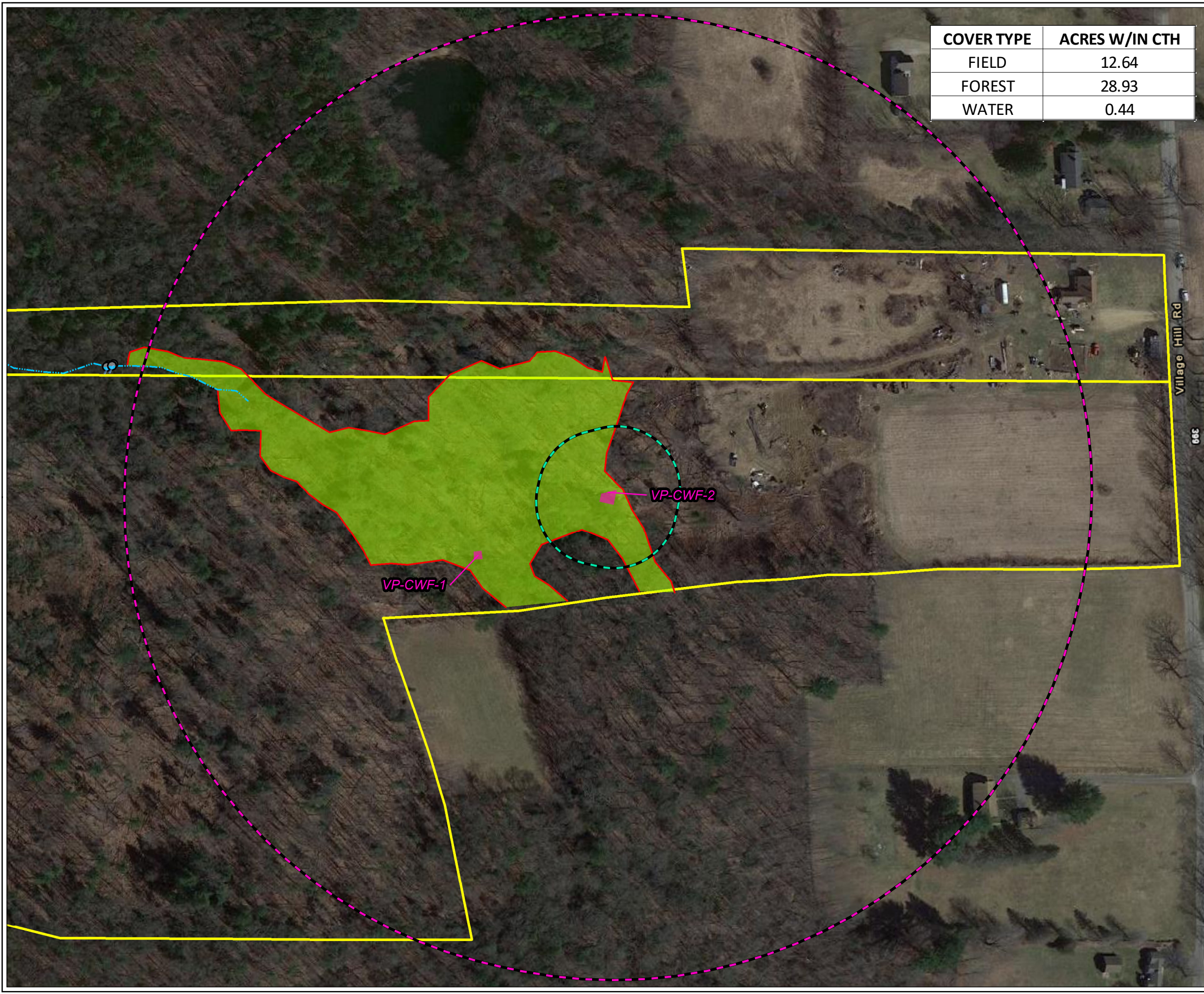
DRAWN BY: D. KENWORTHY PROJ NO.: 22-F002
CHECKED BY: K. NICKERSON
MONTH: NOVEMBER
YEAR: 2023

FILE NO.: KCE_WillingtonCTS_ROG_57C_VP1CTH_Fig1B_PostCon_11x17L.mxd

FIGURE 1B

Coordinate System: NAD 1983 StatePlane Connecticut FIPS 0600 Feet (Foot US)
Map Rotation: 0

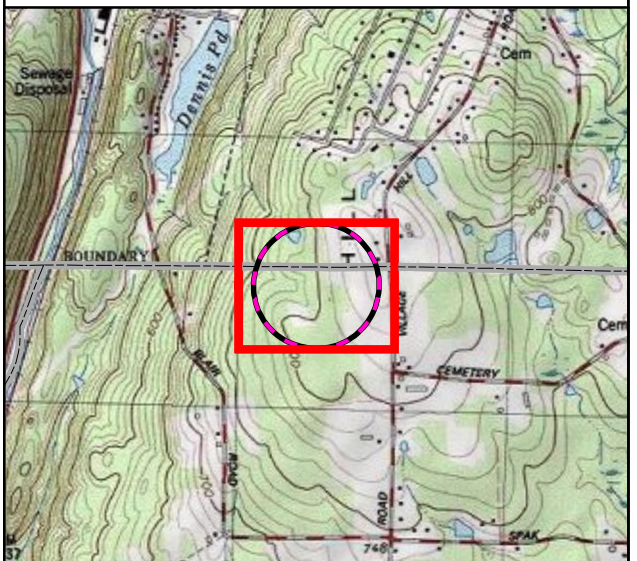
Plot Date: 11/14/2023 19:28:04 PM by DREWKENWORTHY -- LAYOUT: ANSIB(11"x17")
Path: C:\FLYCATCHER\Projects\KeyCapture\KCE_Wilmington\CTS_ROG_57C_VP2CTH_Fig2A_Existing_11x17L.mxd



COVER TYPE	ACRES W/IN CTH
FIELD	12.64
FOREST	28.93
WATER	0.44

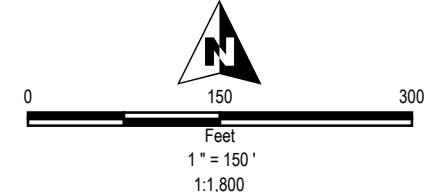
LEGEND

- HOST PARCELS
- CULVERT
- DELINEATED INTERMITTENT STREAM
- DELINEATED WETLAND BOUNDARY
- VERNAL POOL BASIN
- DELINEATED WETLAND
- 750' CRITICAL TERRESTRIAL HABITAT (42.02 AC.)
- 100' VERNAL POOL ENVELOPE



NOTES:

- 1 BASEMAP IMAGERY FROM ESRI/NAIP "WORLD IMAGERY" SERVICE LAYER.
- 2 HOST PARCEL BOUNDARY BASED ON ALTA/NSPS LAND TITLE SURVEY PROVIDED BY WSP.



PROJECT: **KEY CAPTURE ENERGY
CT 5 BATTERY STORAGE PROJECT
WILLINGTON, TOLLAND COUNTY, CT**

TITLE: **INTERROGATORY 57C
VP-CWF-2 CRITICAL TERRESTRIAL HABITAT
EXISTING CONDITIONS**

DRAWN BY: D. KENWORTHY PROJ NO.: 22-F002
CHECKED BY: K. NICKERSON
MONTH: NOVEMBER
YEAR: 2023

FIGURE 2A



FILE NO.: KCE_WilmingtonCTS_ROG_57C_VP2CTH_Fig2A_Existing_11x17L.mxd

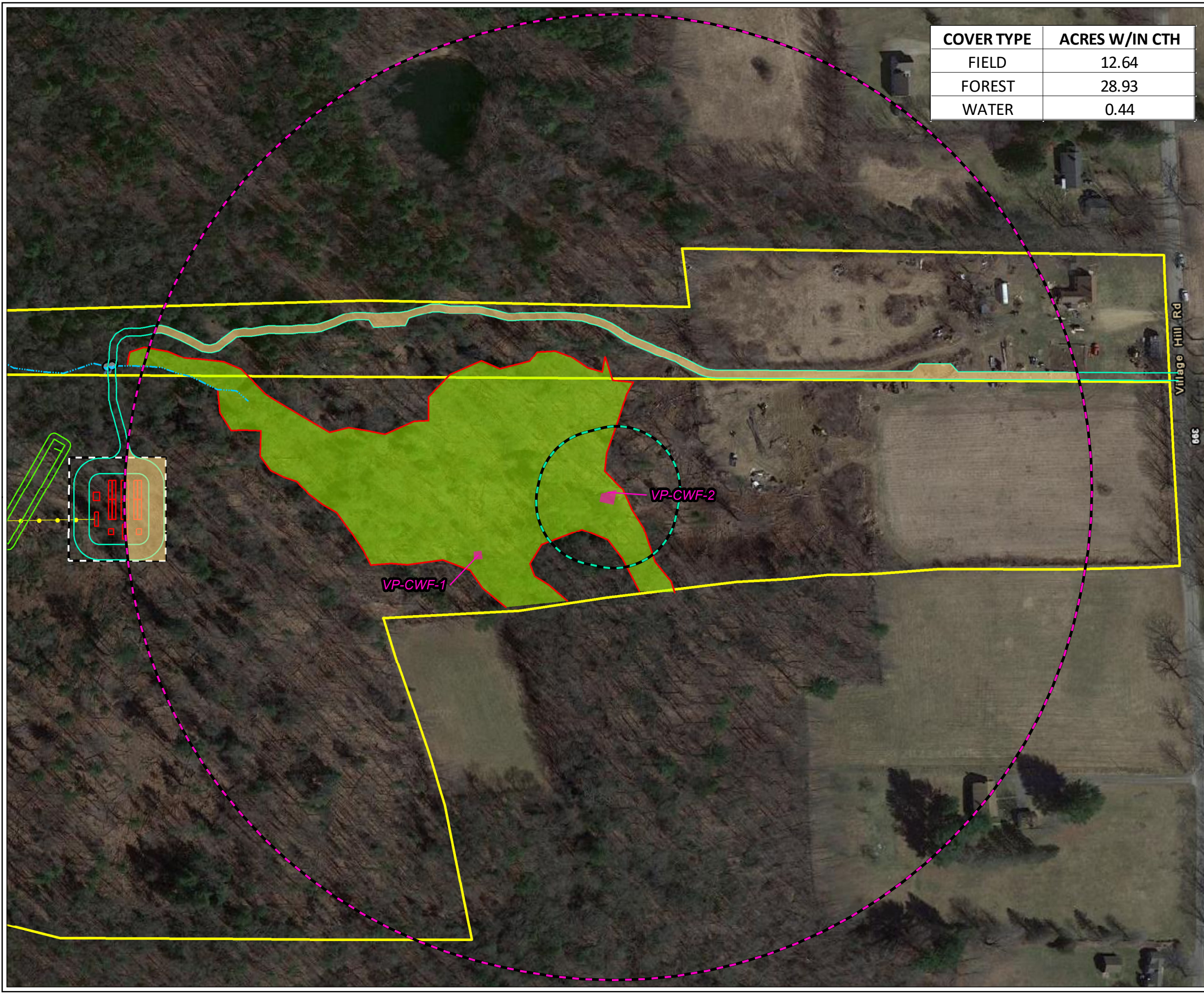
Coordinate System: NAD 1983 StatePlane Connecticut FIPS 0600 Feet (Foot US)
Map Rotation: 0

Plot Date: 11/14/2023 19:27:38 PM by DREWKENWORTHY -- LAYOUT: ANSIB(11"x17")
Path: C:\FLYCATCHER\Projects\KeyCapture\KCE_Wilmington\CTS_ROG_57C_VP2CTH_Fig2B_PostCon_11x17L.mxd

COVER TYPE	ACRES W/IN CTH
FIELD	12.64
FOREST	28.93
WATER	0.44

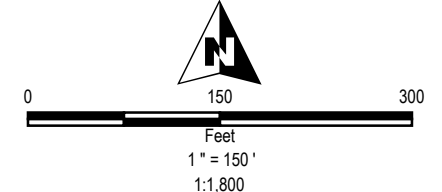
LEGEND

- HOST PARCELS
- CULVERT
- DELINEATED INTERMITTENT STREAM
- DELINEATED WETLAND BOUNDARY
- VERNAL POOL BASIN
- DELINEATED WETLAND
- ACCESS ROAD
- SECURITY FENCE
- STORMWATER BASIN
- BATTERY STORAGE CONTAINER / EQUIPMENT PAD
- INTERCONNECTION ROUTE
- 750' CRITICAL TERRESTRIAL HABITAT (42.02 AC.)
- 100' VERNAL POOL ENVELOPE
- PROJECT FOOTPRINT WITHIN CTH (0.69 AC.)



NOTES:

- 1 BASEMAP IMAGERY FROM ESRI/NAIP "WORLD IMAGERY" SERVICE LAYER.
- 2 HOST PARCEL BOUNDARY BASED ON ALTA/NSPS LAND TITLE SURVEY PROVIDED BY WSP.



PROJECT: **KEY CAPTURE ENERGY
CT 5 BATTERY STORAGE PROJECT
WILLINGTON, TOLLAND COUNTY, CT**

TITLE: **INTERROGATORY 57C
VP-CWF-2 CRITICAL TERRESTRIAL HABITAT
POST CONSTRUCTION CONDITIONS**

DRAWN BY: D. KENWORTHY PROJ NO.: 22-F002
CHECKED BY: K. NICKERSON
MONTH: NOVEMBER
YEAR: 2023

FIGURE 2B

FILE NO.: KCE_WilmingtonCTS_ROG_57C_VP2CTH_Fig2B_PostCon_11x17L.mxd