



Lee D. Hoffman
90 State House Square
Hartford, CT 06103-3702
p 860 424 4315
f 860 424 4370
lhoffman@pullcom.com
www.pullcom.com

December 4, 2023

VIA ELECTRONIC MAIL AND HAND DELIVERY

Melanie Bachman
Executive Director/Staff Attorney
Connecticut Siting Council
10 Franklin Square
New Britain, CT 06051

Re: PETITION NO. 1589 – USS Somers Solar, LLC petition for a declaratory ruling, pursuant to Connecticut General Statutes §4-176 and §16-50k, for the proposed construction, maintenance and operation of a 3.0-megawatt AC solar photovoltaic electric generating facility located at 360 Somers Road, Ellington, Connecticut, and associated electrical interconnection. Council Interrogatories to Petitioner

Dear Ms. Bachman:

I am writing on behalf of my client, USS Somers Solar, LLC, in connection with the above-referenced Petition. With this letter, I am enclosing the original and fifteen copies of the response to Interrogatory No. 70 related to photographic site documentation. As you know, this Interrogatory was issued by the Council on October 20, 2023.

Should you have any questions concerning this submittal, please contact me at your convenience.

Sincerely,

Lee D. Hoffman
Enclosure



Data Source(s): Westwood (2023); .



Westwood
 Toll Free (888) 937-5150 westwoodps.com
 Westwood Professional Services, Inc.

Legend			
	Observation Points		Access Road
	Drainage		Arrays
	Drainage		Catchment Basin
	Collection Line		Transformer
	Drainage		Site Boundary
	Collection Line		

Somers Site Visit

Tolland County, CT

Observation Site Layout Map

December 1, 2023

Somers Solar Site Visit

Tolland County, CT
12/01/2023

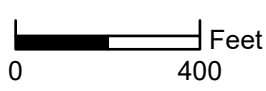
Observation ID: **Location 1**

Date: **11/29/2023**

Observer: **Joe Dietrich**

Lat/Long: **41.92828591, -72.45576948**





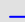
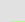
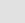
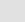
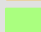
Notes: Red-poi, green-East limit of prime farm soils



Data Source(s): Westwood (2023);



Legend

-  Observation Points
-  Access Road
-  Access Road
-  Drainage
-  Drainage
-  Collection Line
-  Drainage
-  Collection Line
-  Prime Farmland



Somers Solar Site Visit

Tolland County, CT
12/01/2023

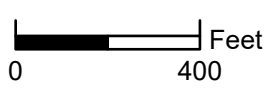
Observation ID: **Location 2**

Date: **11/29/2023**

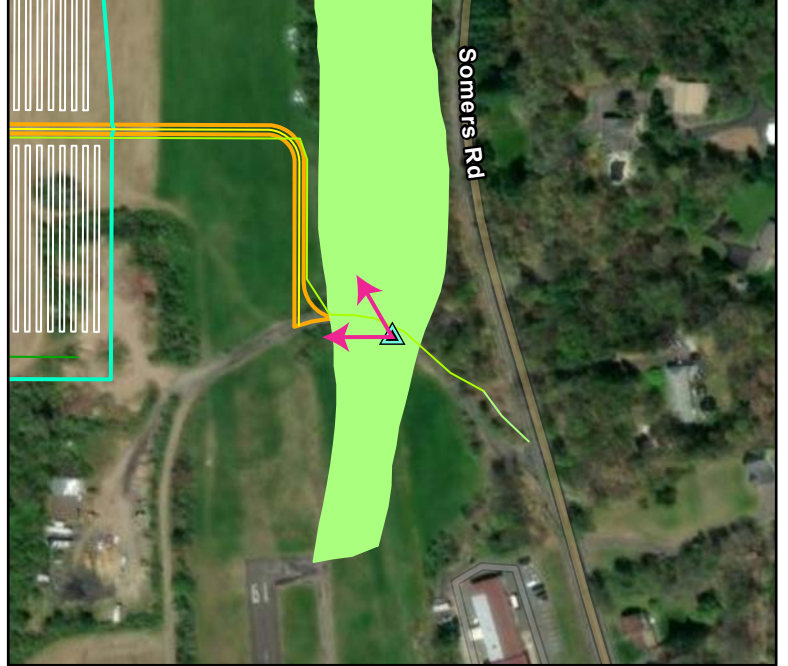
Observer: **Joe Dietrich**

Lat/Long: **41.92892925, -72.45655224**

Notes: Orange-access rd turnoff centerline, green-west limit of prime farm soils



Data Source(s): Westwood (2023);



Legend

Observation Points	Access Road	Access Road
Drainage	Arrays	Site Boundary
Drainage	Prime Farmland	
Collection Line		
Drainage		
Collection Line		



Somers Solar Site Visit

Tolland County, CT
12/01/2023

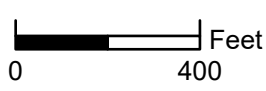
Observation ID: **Location 3**

Date: **11/29/2023**

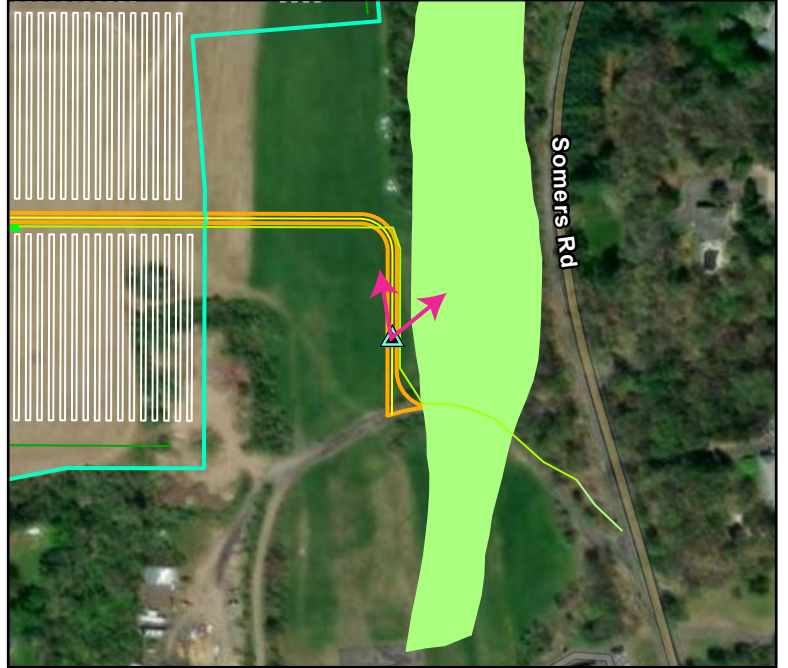
Observer: **Joe Dietrich**

Lat/Long: **41.92931375, -72.45710485**

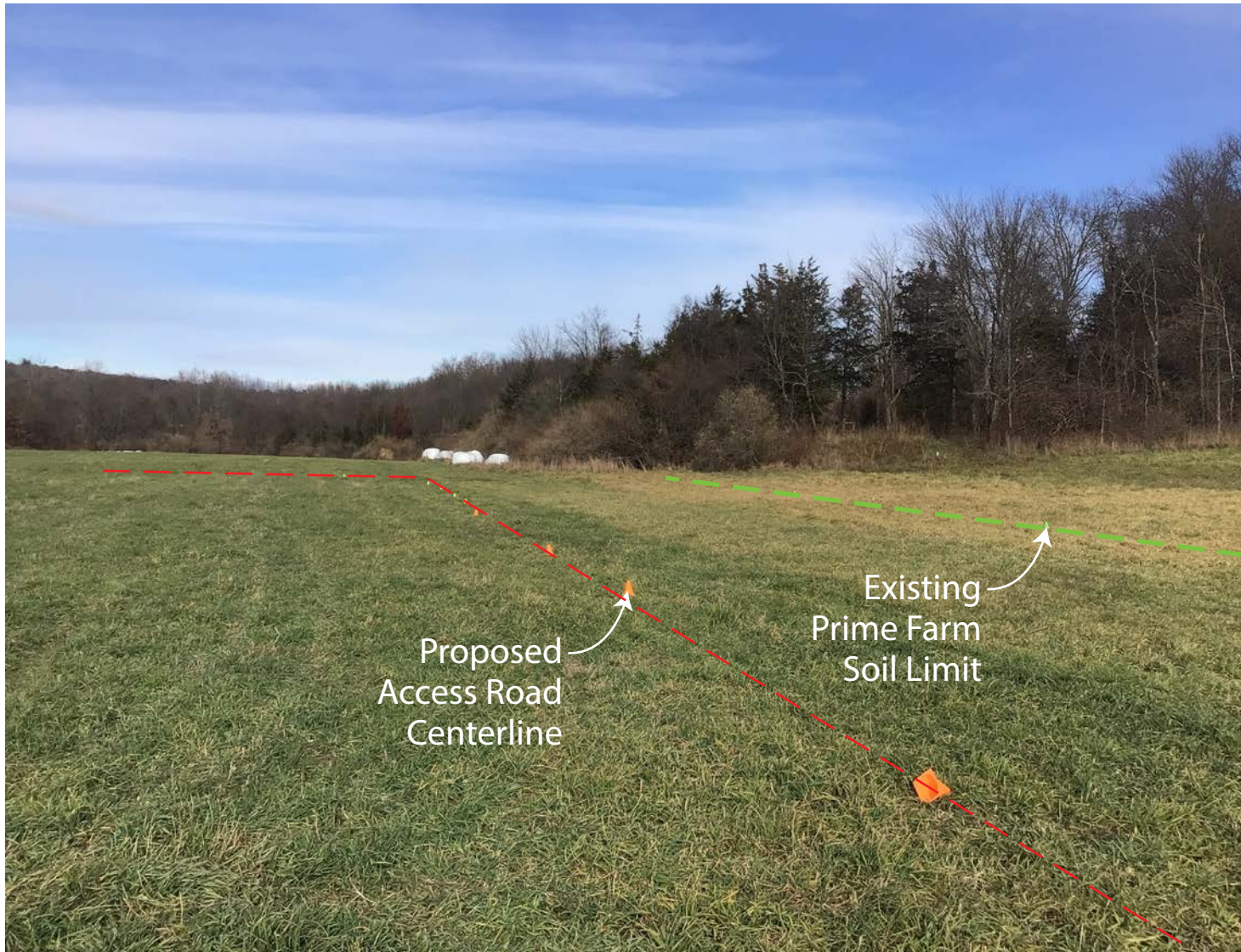
Notes: Orange/yellow-access rd, green-prime farm soil limit



Data Source(s): Westwood (2023);



Legend			
	Observation Points		Access Road
	Drainage		Arrays
	Drainage		Transformer
	Collection Line		Site Boundary
	Drainage		Prime Farmland
	Collection Line		



Proposed Access Road Centerline

Existing Prime Farm Soil Limit

Somers Solar Site Visit

Tolland County, CT
12/01/2023

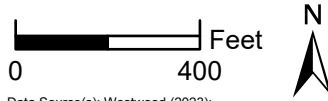
Observation ID: **Location 4**

Date: **11/29/2023**

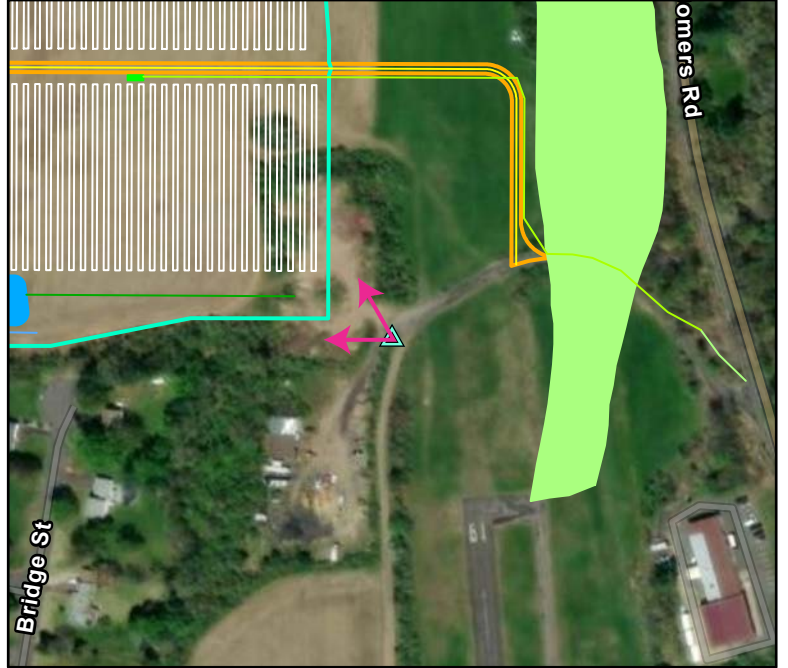
Observer: **Joe Dietrich**

Lat/Long: **41.92865152, -72.45784275**

Notes: Orange cones -fence line. Green cones array



Data Source(s): Westwood (2023);



Legend			
	Observation Points		Access Road
	Drainage		Access Road
	Drainage		Arrays
	Collection Line		Catchment Basin
	Drainage		Transformer
	Collection Line		Site Boundary
			Prime Farmland



Somers Solar Site Visit

Tolland County, CT
12/01/2023

Observation ID: **Location 5**

Date: **11/29/2023**

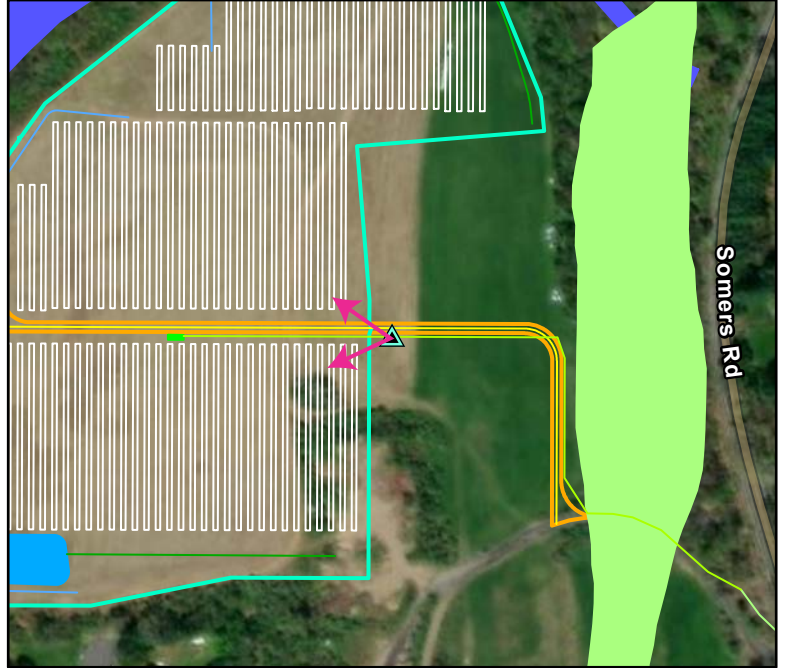
Observer: **Joe Dietrich**

Lat/Long: **41.92979909, -72.45808251**

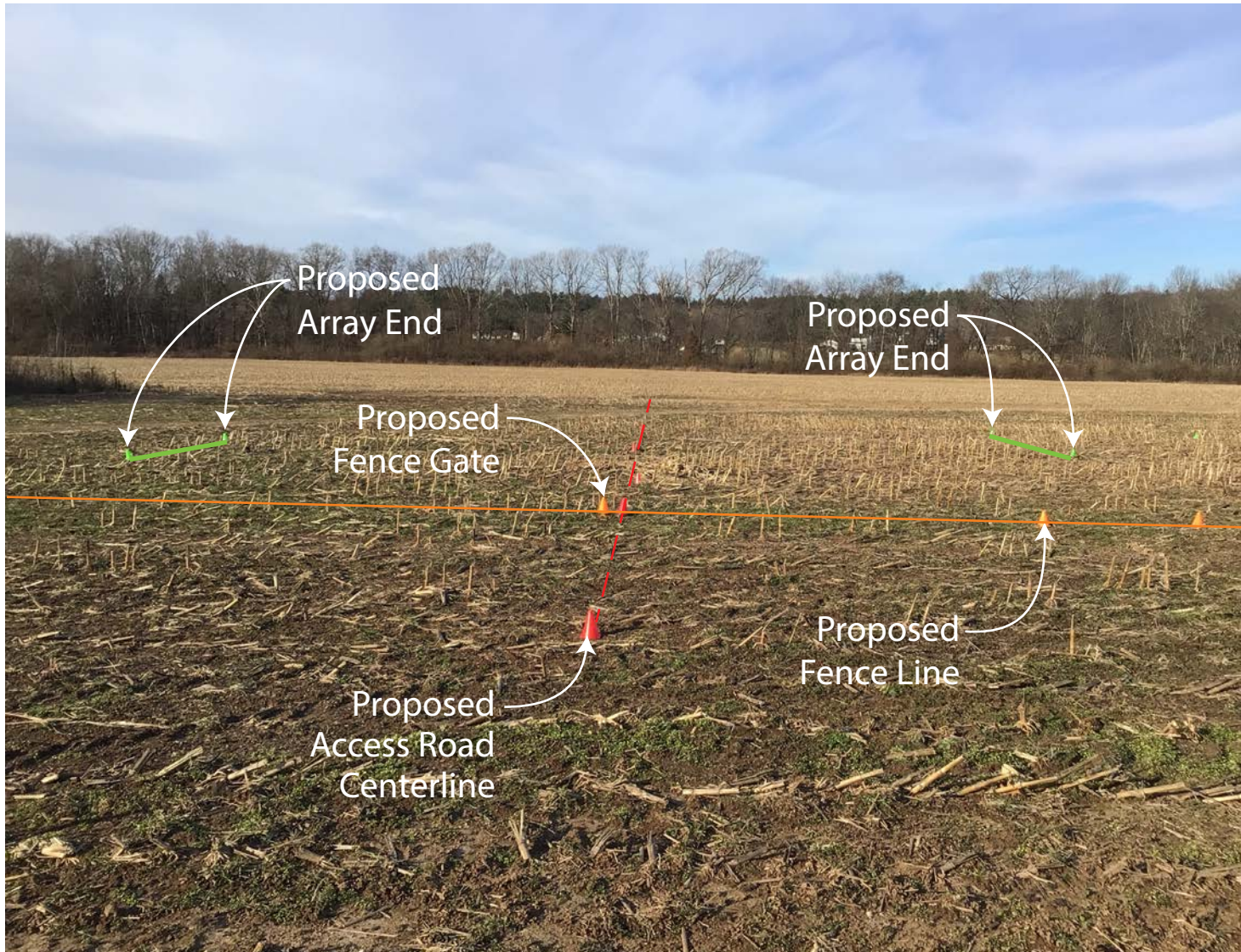
Notes: Red-access rd, orange-fence line, green-arrays



Data Source(s): Westwood (2023);



Legend		
	Observation Points	
	Drainage	
	Drainage	
	Collection Line	
	Drainage	
	Collection Line	



Somers Solar Site Visit

Tolland County, CT
12/01/2023

Observation ID: **Location 6**

Date: **11/29/2023**

Observer: **Joe Dietrich**

Lat/Long: **41.92983512, -72.45827801**

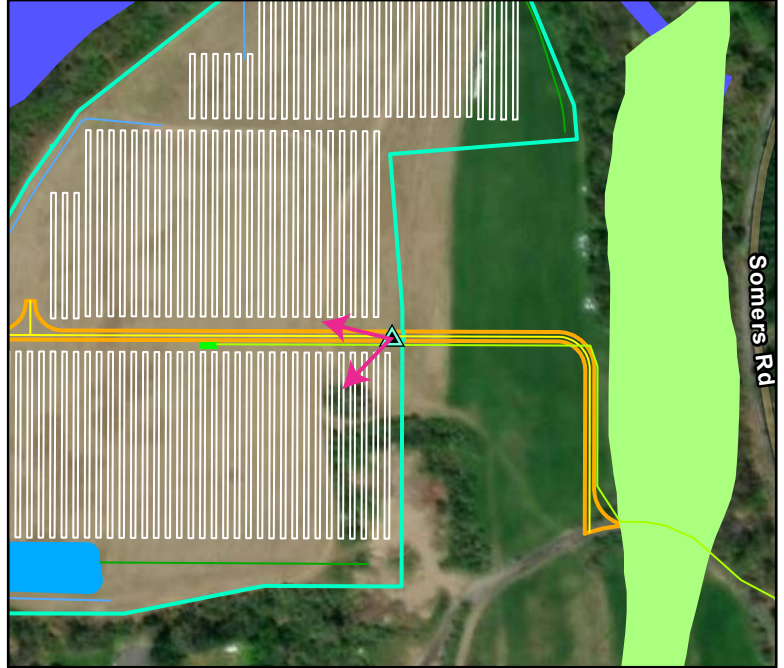
Notes: Red-access rd, green-array, yellow-inverter



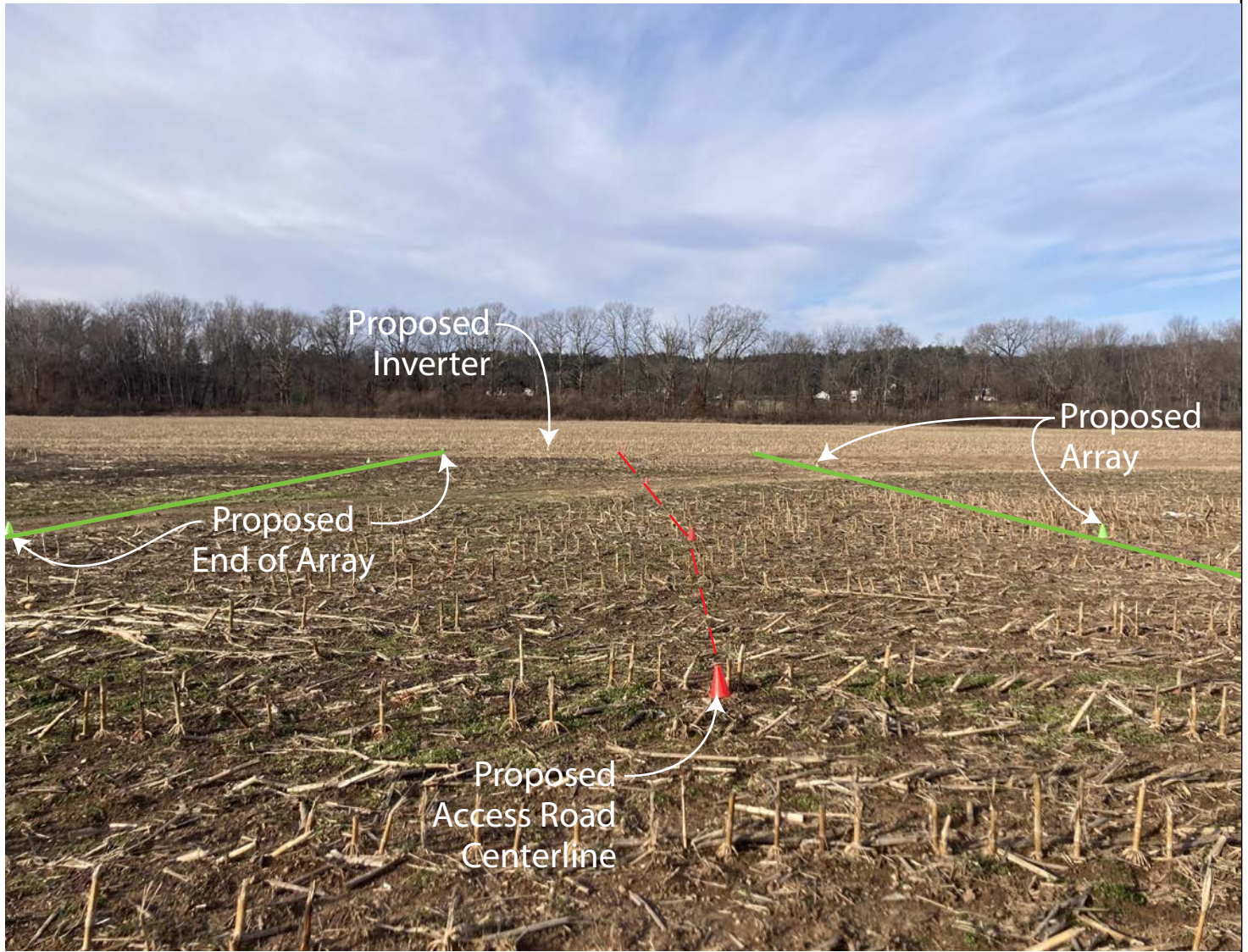
Westwood

Toll Free (888) 937-5150 westwoodps.com
Westwood Professional Services, Inc.

Data Source(s): Westwood (2023);



Legend			
	Observation Points		Access Road
	Drainage		Arrays
	Drainage		Catchment Basin
	Collection Line		Transformer
	Drainage		Site Boundary
	Collection Line		Waterway
			Prime Farmland



Somers Solar Site Visit

Tolland County, CT
12/01/2023

Observation ID: **Location 7**

Date: **11/29/2023**

Observer: **Joe Dietrich**

Lat/Long: **41.92898094, -72.46014425**

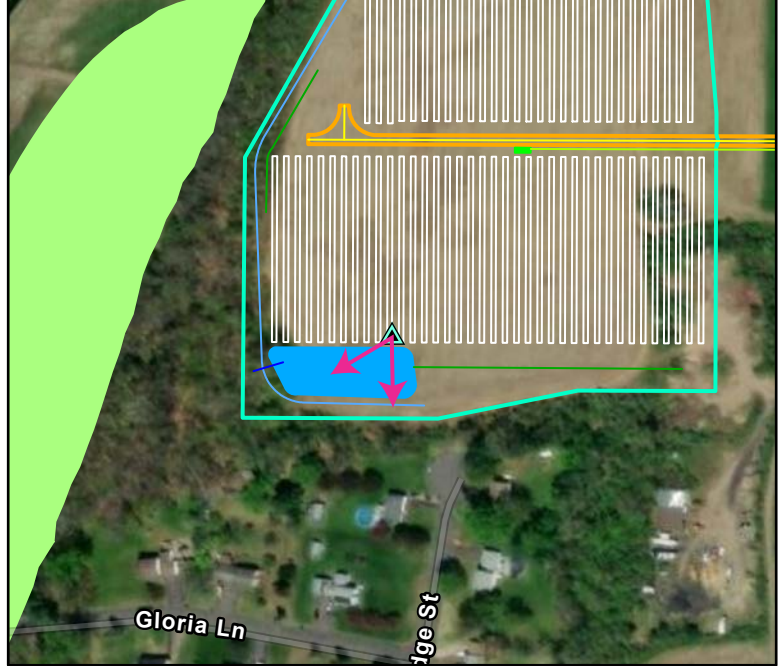
Notes: Yellow-end of array, green-limits of storm water, orange-fence line



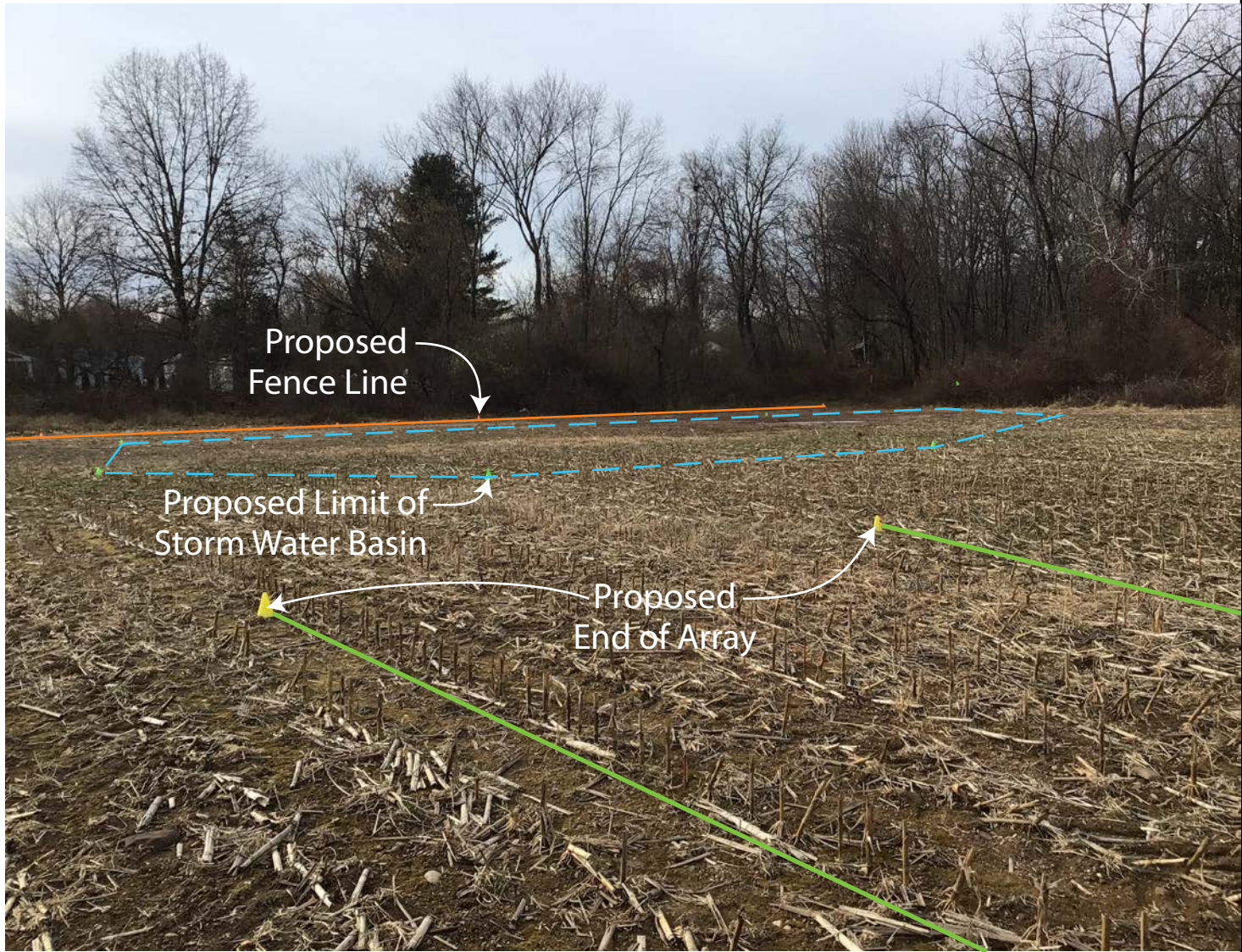
Westwood

Toll Free (888) 937-5150 westwoodps.com
Westwood Professional Services, Inc.

Data Source(s): Westwood (2023);



Legend			
	Observation Points		Access Road
	Drainage		Access Road
	Drainage		Arrays
	Collection Line		Catchment Basin
	Drainage		Transformer
	Collection Line		Site Boundary
	Collection Line		Prime Farmland



Somers Solar Site Visit

Tolland County, CT
12/01/2023

Observation ID: **Location 8**

Date: **11/29/2023**

Observer: **Joe Dietrich**

Lat/Long: **41.92922438, -72.46121653**

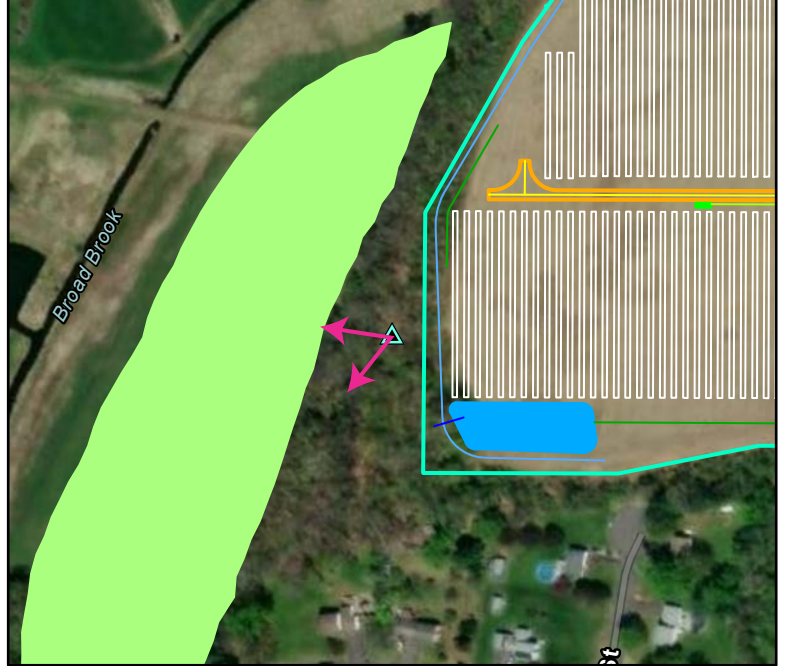
Notes: Prime farmland off-site edge of field



Westwood

Toll Free (888) 937-5150 westwoodps.com
Westwood Professional Services, Inc.

Data Source(s): Westwood (2023);



Legend			
	Observation Points		Access Road
	Drainage		Arrays
	Drainage		Catchment Basin
	Collection Line		Transformer
	Drainage		Site Boundary
	Collection Line		Prime Farmland



Somers Solar Site Visit

Tolland County, CT
12/01/2023

Observation ID: **Location 9**

Date: **11/29/2023**

Observer: **Joe Dietrich**

Lat/Long: **41.92809295, -72.45982719**

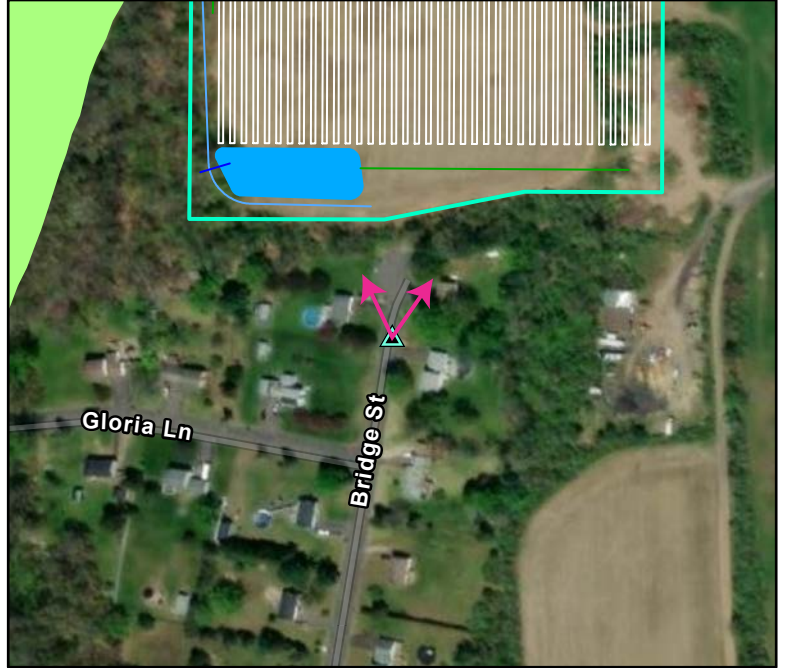
Notes: Orange- fence line



Westwood

Toll Free (888) 937-5150 westwoodps.com
Westwood Professional Services, Inc.

Data Source(s): Westwood (2023);



Legend			
	Observation Points		Arrays
	Drainage		Catchment Basin
	Drainage		Site Boundary
	Collection Line		Prime Farmland
	Drainage		
	Access Road		



Somers Solar Site Visit

Tolland County, CT
12/01/2023

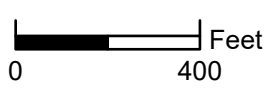
Observation ID: **Location 10**

Date: **11/29/2023**

Observer: **Joe Dietrich**

Lat/Long: **41.93041608, -72.45995830**

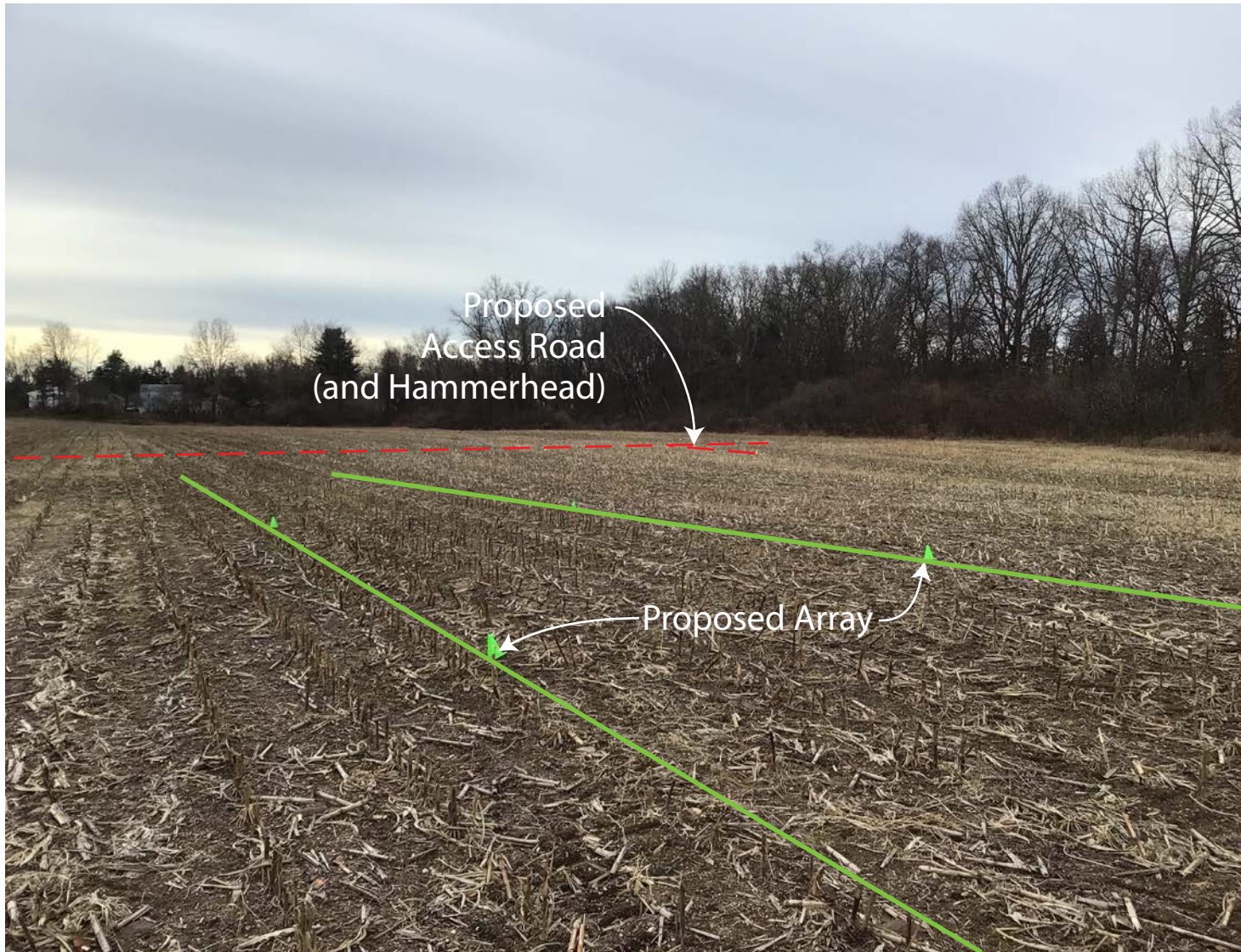
Notes: Green-array lines, orange-access rd hammerhead



Data Source(s): Westwood (2023);



Legend			
	Observation Points		Access Road
	Drainage		Access Road
	Drainage		Arrays
	Collection Line		Catchment Basin
	Drainage		Transformer
	Collection Line		Site Boundary
			Waterway
			Prime Farmland



Somers Solar Site Visit

Tolland County, CT
12/01/2023

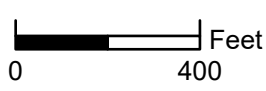
Observation ID: **Location 11a**

Date: **11/29/2023**

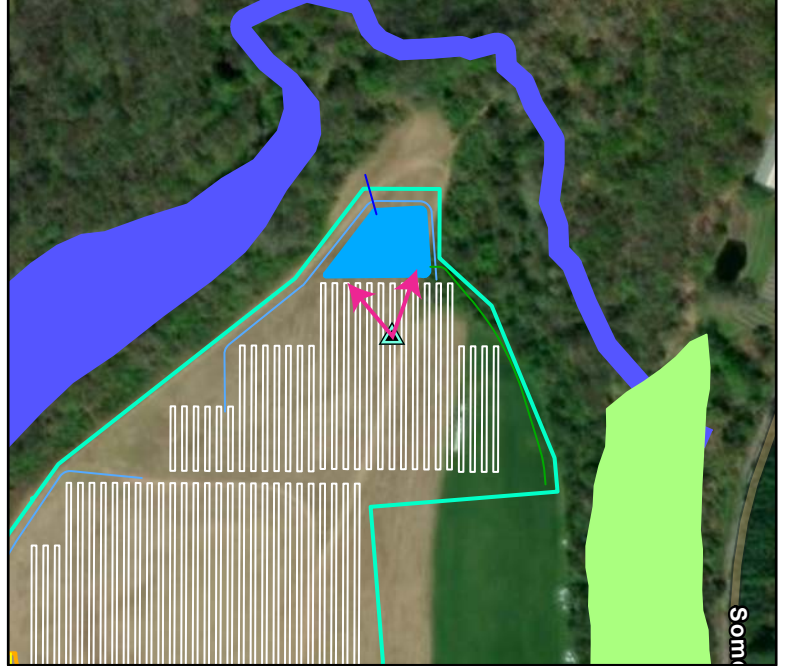
Observer: **Joe Dietrich**

Lat/Long: **41.93140226, -72.45816218**

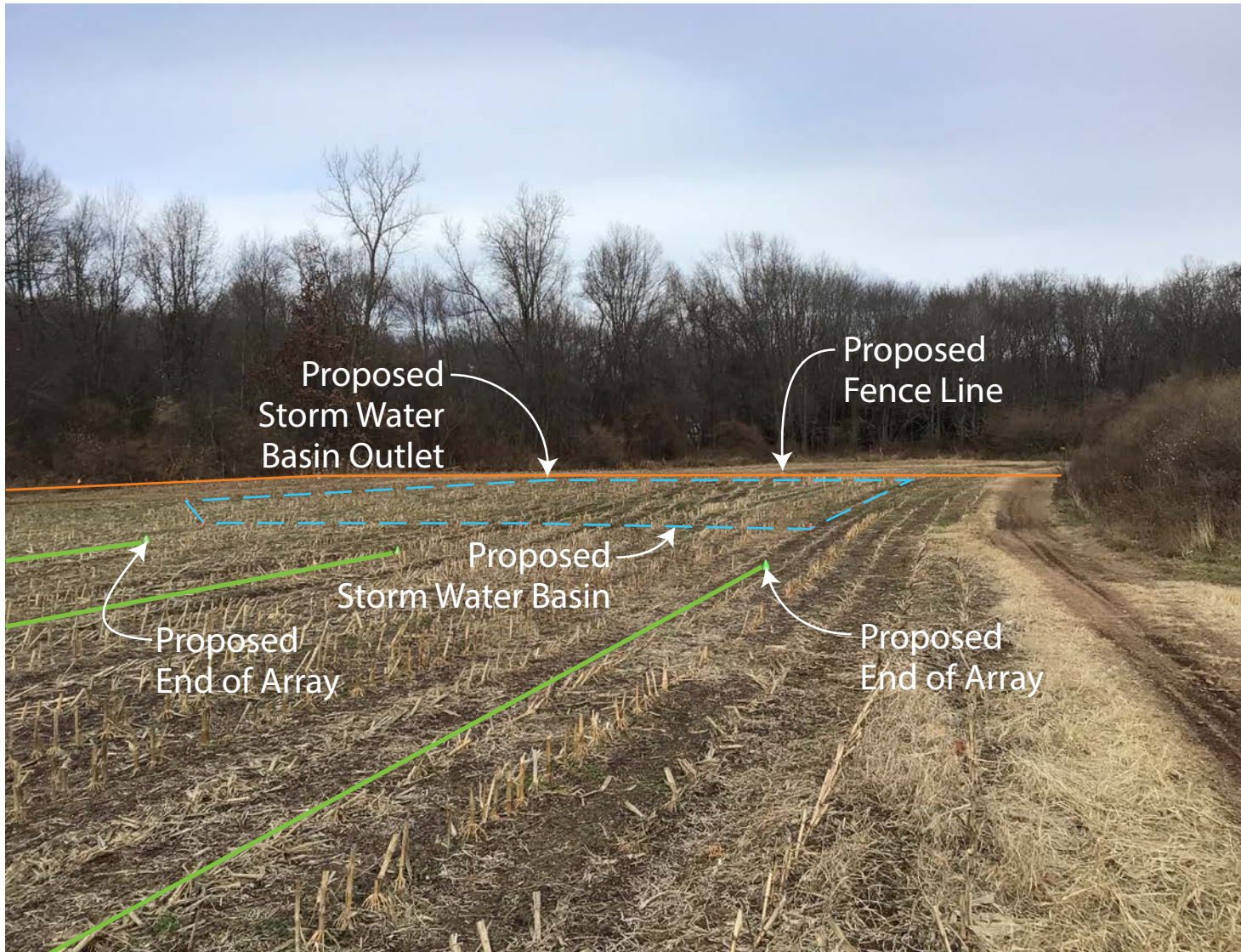
Notes: Green-end of arrays, red-storm water basin limits, yellow-outlet location, orange-fenceline



Data Source(s): Westwood (2023);



Legend			
	Observation Points		Access Road
	Drainage		Access Road
	Drainage		Arrays
	Collection Line		Catchment Basin
	Drainage		Site Boundary
	Collection Line		Waterway
	Collection Line		Prime Farmland



Somers Solar Site Visit

Tolland County, CT
12/01/2023

Observation ID: **Location 11b**

Date: **11/29/2023**

Observer: **Joe Dietrich**

Lat/Long: **41.93140238, -72.45814110**

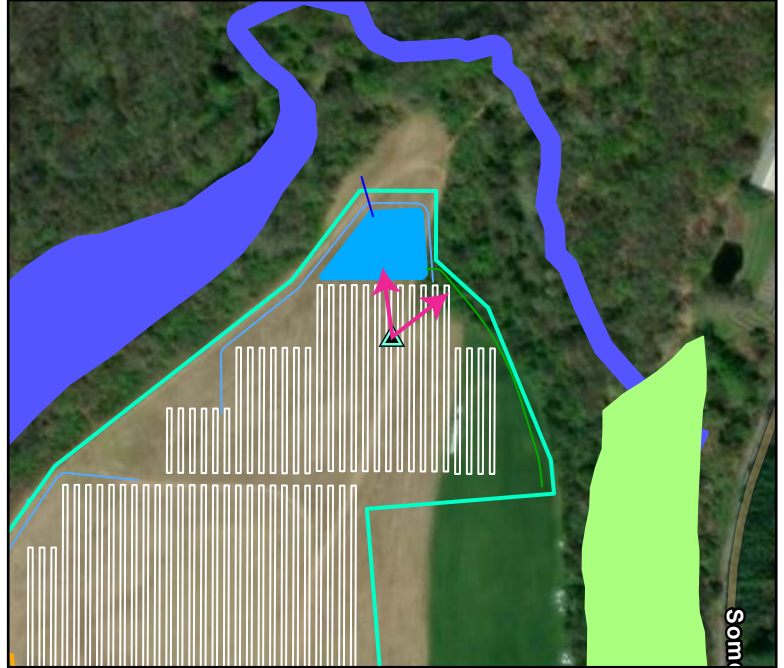
Notes: Green-end of arrays, red-storm basin limits, orange-fence, wetlands in woods



Westwood

Toll Free (888) 937-5150 westwoodps.com
Westwood Professional Services, Inc.

Data Source(s): Westwood (2023);



Legend			
	Observation Points		Access Road
	Drainage		Access Road
	Drainage		Arrays
	Collection Line		Catchment Basin
	Drainage		Site Boundary
	Collection Line		Waterway
	Collection Line		Prime Farmland

