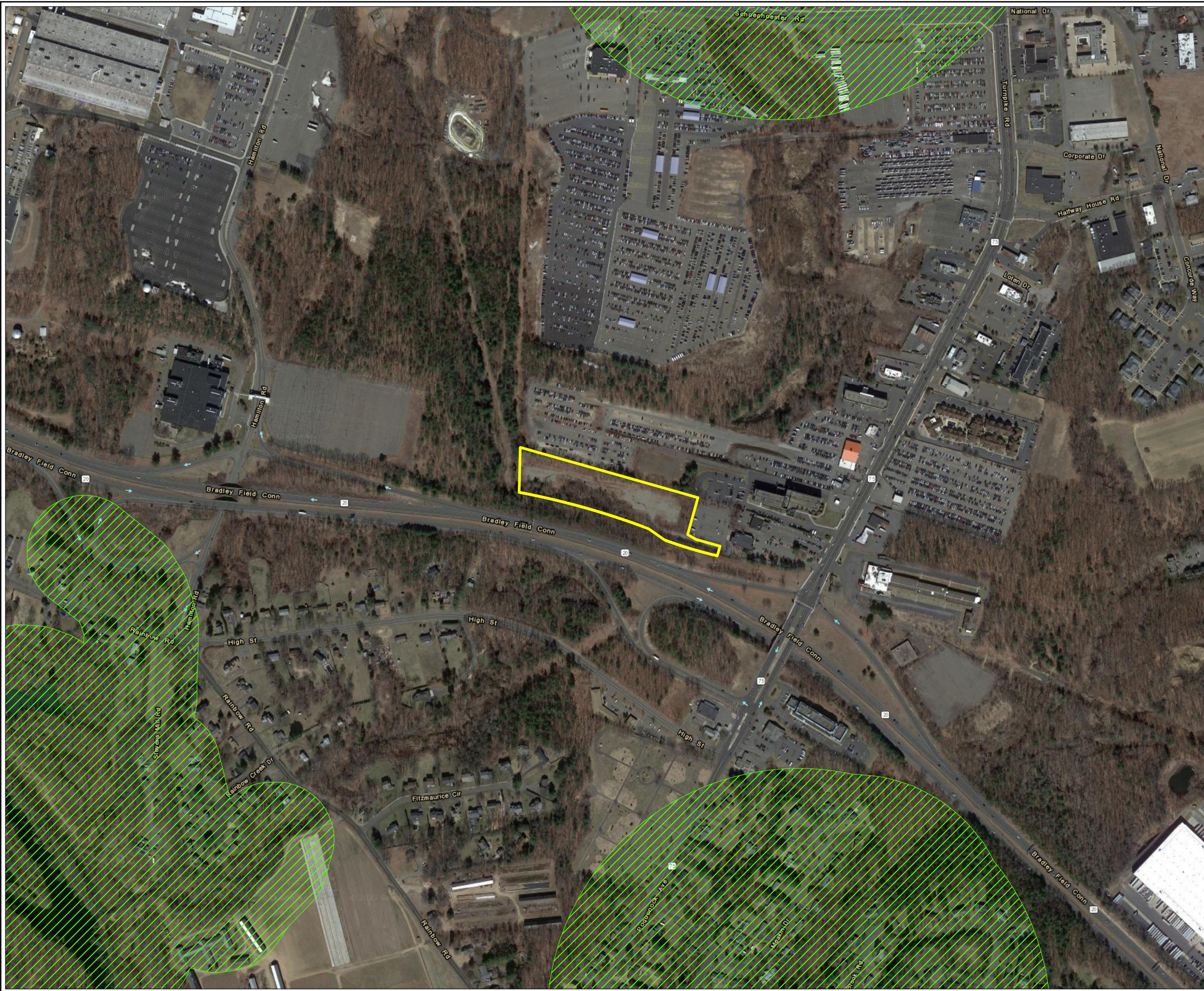


Coordinate System: NAD 1983 StatePlane Connecticut FIPS 0600 Feet (Foot US)
Map Rotation: 0

Plot Date: 6/5/2023 10:47:36 AM by DREWKENWORTHY -- LAYOUT: ANSI B(11"x17")
Path: C:\FLYCATCHER\Projects\KeyCapture\KCE_WindsorLocksCT9_Petition_Fig8_NDDB_11x17L.mxd



LEGEND

- SUBJECT PARCEL
- NDDB AREA

NOTES:

- BASEMAP IMAGERY FROM ESRI/NAIP "WORLD IMAGERY" SERVICE LAYER.
- NDDB POLYGONS ARE FROM DECEMBER 2022.

PROJECT: **KEY CAPTURE ENERGY
CT 9 BATTERY STORAGE PROJECT
WINDSOR LOCKS, HARTFORD COUNTY, CT**

TITLE: **NATURAL DIVERSITY DATA BASE AREAS**

DRAWN BY: D. KENWORTHY	PROJ NO.: 22-F3
CHECKED BY: K. NICKERSON	
MONTH: JUNE	
YEAR: 2023	

FIGURE 8

FILE NO: KCE_WindsorLocksCT9_Petition_Fig8_NDDB_11x17L.mxd