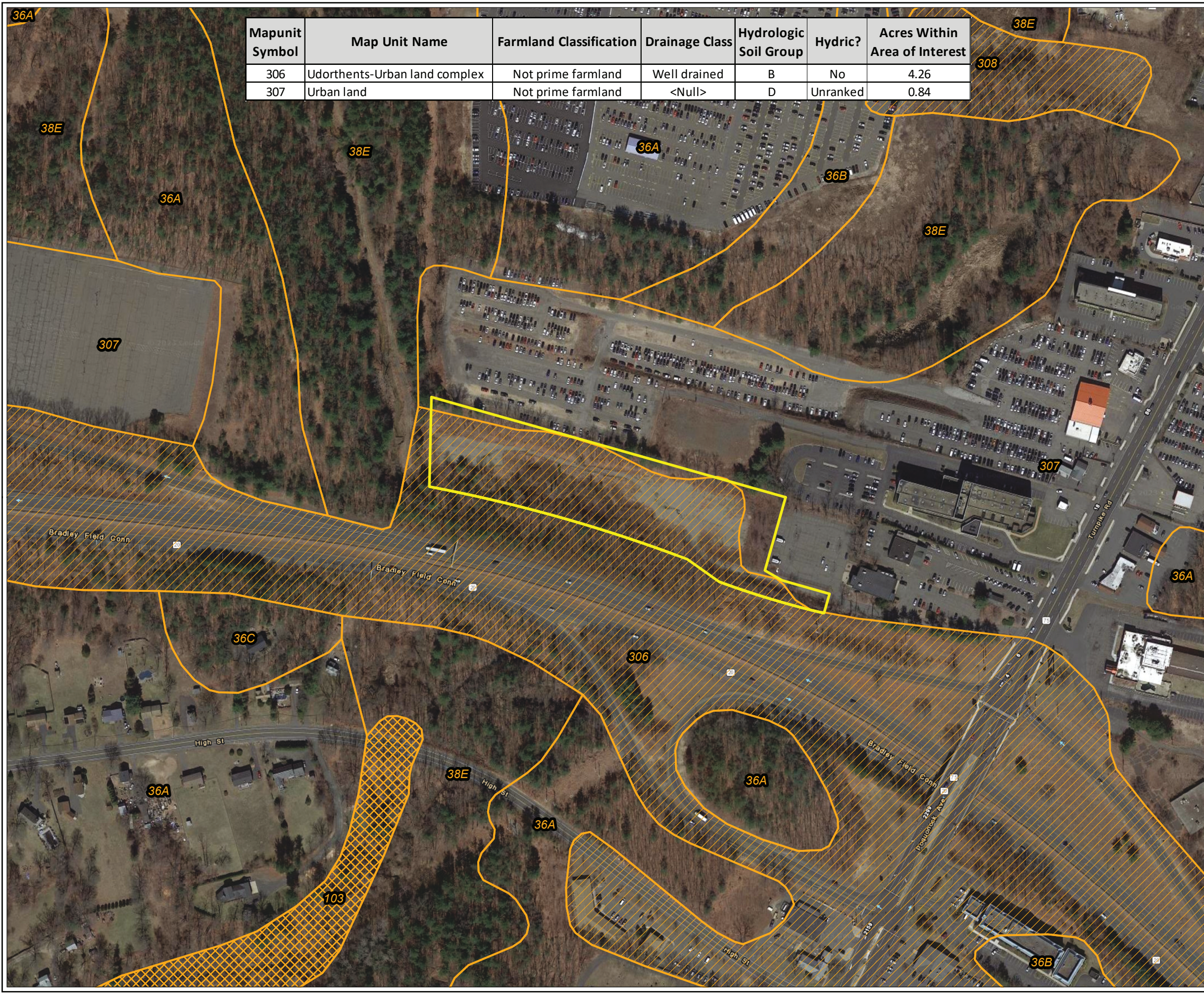


Coordinate System: NAD 1983 StatePlane Connecticut FIPS 0600 Feet (Foot US)
Map Rotation: 0

Plot Date: 6/5/2023 10:45:28 AM by DREWKENWORTHY -- LAYOUT: ANSI B(11"x17")
Path: C:\FLYCATCHER\Projects\KeyCapture\KCE_WindsorLocksCT9_Petition_Fig7_NRCS_11x17L.mxd

Mapunit Symbol	Map Unit Name	Farmland Classification	Drainage Class	Hydrologic Soil Group	Hydric?	Acres Within Area of Interest
306	Udorthents-Urban land complex	Not prime farmland	Well drained	B	No	4.26
307	Urban land	Not prime farmland	<Null>	D	Unranked	0.84



LEGEND

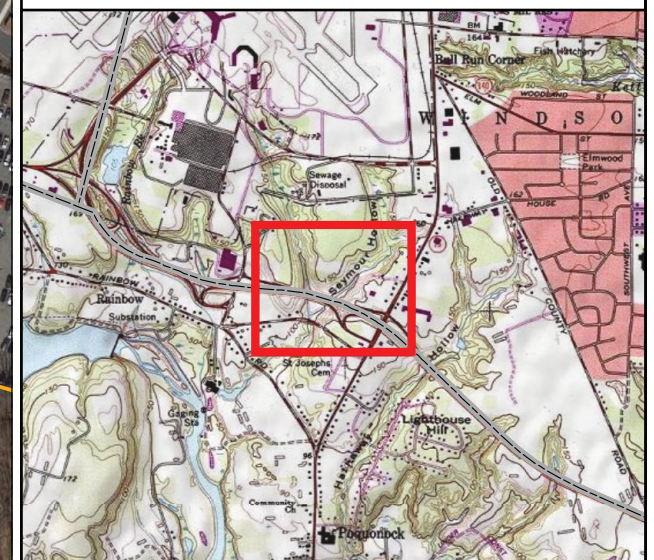
SUBJECT PARCEL

NRCS SOILS BY DRAINAGE

EXCESSIVELY DRAINED; SOMEWHAT EXCESSIVELY DRAINED

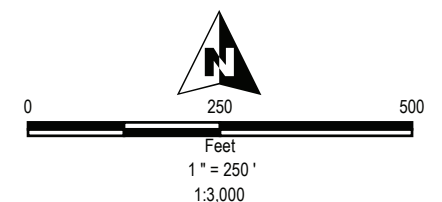
MODERATELY WELL DRAINED; WELL DRAINED

POORLY DRAINED; VERY POORLY DRAINED



NOTES:

- 1 BASEMAP IMAGERY FROM ESRI/NAIP "WORLD IMAGERY" SERVICE LAYER.
- 2 NRCS SOIL DATA ACQUIRED FROM ESRI SSURGO DOWNLOADER OCTOBER 2022.



PROJECT: **KEY CAPTURE ENERGY
CT 9 BATTERY STORAGE PROJECT
WINDSOR LOCKS, HARTFORD COUNTY, CT**

TITLE: **NRCS SOIL SURVEY**

DRAWN BY: D. KENWORTHY	PROJ NO.: 22-F3
CHECKED BY: K. NICKERSON	
MONTH: JUNE	
YEAR: 2023	

FIGURE 7

FILE NO: KCE_WindsorLocksCT9_Petition_Fig7_NRCS_11x17L.mxd