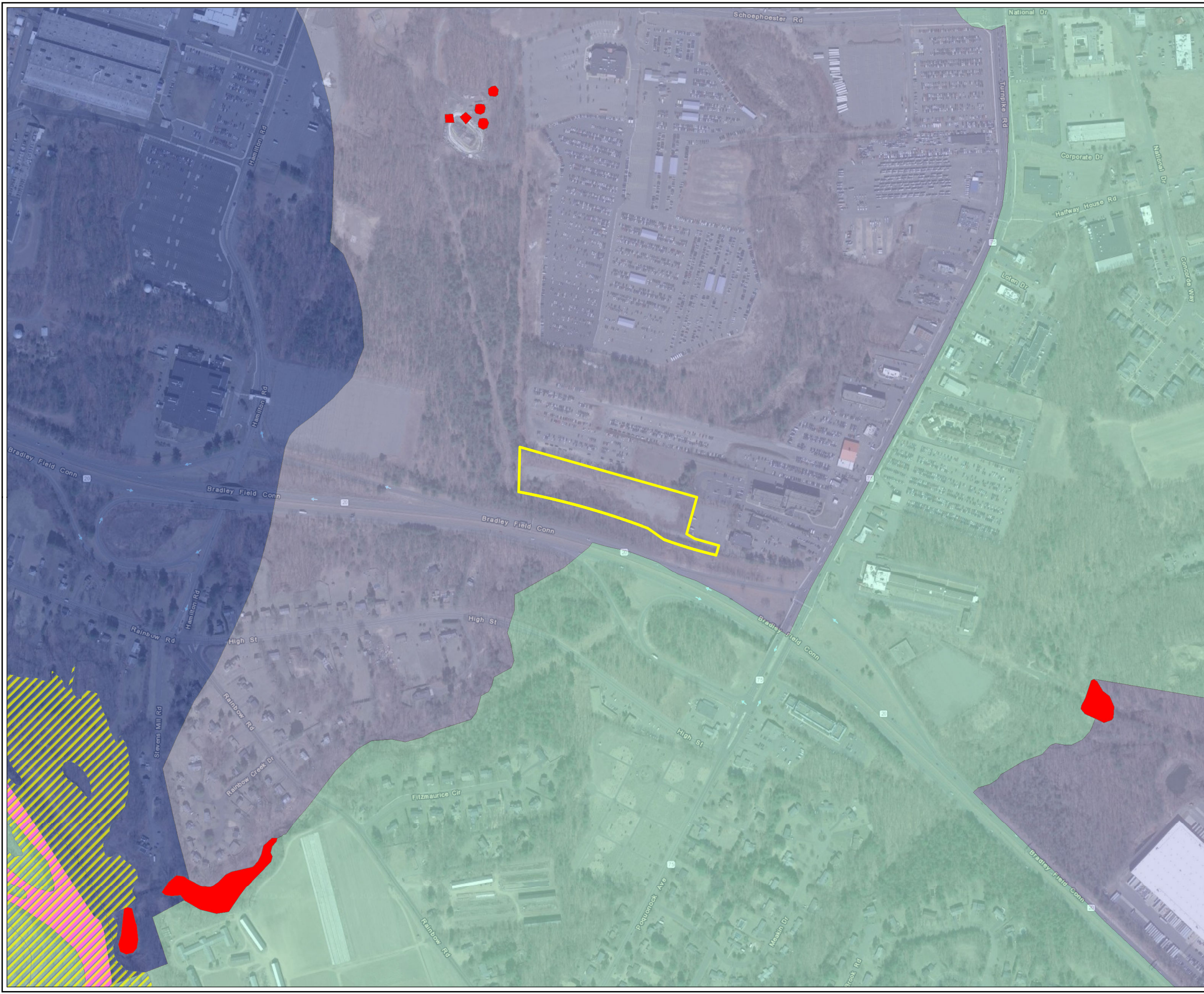


Coordinate System: NAD 1983 StatePlane Connecticut FIPS 0600 Feet (Foot US)
Map Rotation: 0

Plot Date: 6/5/2023 10:28:07 AM by DREWKENWORTHY -- LAYOUT: ANSI B(11"x17")
Path: C:\FLYCATCHER\Projects\KeyCapture\KCE_WindsorLocksCT9_Petition_Fig6_Water_11x17L.mxd



LEGEND

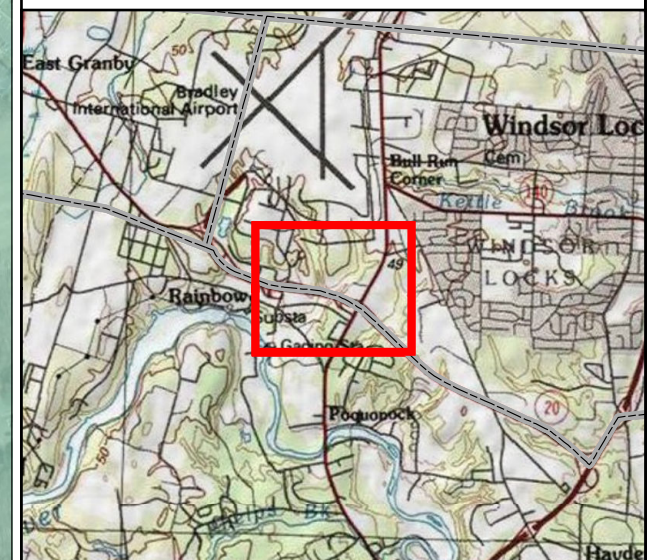
- SUBJECT PARCEL
- FEMA FLOODPLAIN
- DRINKING WATER WATERSHED
- AQUIFER PROTECTION AREA

SURFACE WATER QUALITY CLASSIFICATION

- A
- B

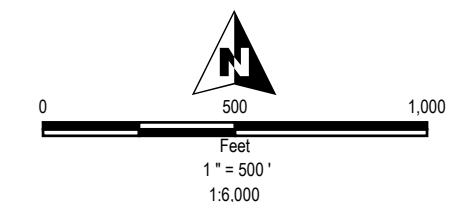
GROUND WATER QUALITY CLASSIFICATION

- GA
- GA-IMPAIRED
- GB



NOTES:

- 1 BASEMAP IMAGERY FROM ESRI/NAIP "WORLD IMAGERY" SERVICE LAYER.
- 2 DRINKING WATER WATERSHEDS AND AQUIFER PROTECTION DISTRICTS ARE NOT PRESENT WITHIN THE MAP EXTENT.



PROJECT:		KEY CAPTURE ENERGY CT 9 BATTERY STORAGE PROJECT WINDSOR LOCKS, HARTFORD COUNTY, CT	
TITLE:		WATER RESOURCES	
DRAWN BY:	D. KENWORTHY	PROJ NO.:	22-F3
CHECKED BY:	K. NICKERSON	FIGURE 6	
MONTH:	JUNE		
YEAR:	2023		
FILE NO.:	KCE_WindsorLocksCT9_Petition_Fig6_Water_11x17L.mxd		