



56 Prospect Street  
P.O. Box 270  
Hartford, CT 06103

**Deborah Denfeld**  
Team Lead – Transmission Siting  
Tel: (860) 728-4654

April 3, 2024

Melanie Bachman, Esq.  
Executive Director  
Connecticut Siting Council  
Ten Franklin Square  
New Britain, CT 06051

Re: Petition 1573 – Brookfield Junction to Bates Rock Substation Upgrade Project  
Request for Sunday Work Hours

Dear Attorney Bachman:

Eversource Energy is requesting Siting Council staff review and approval of Sunday work hours on April 7, 2024, from 8AM to 7PM to conduct drilling activities at Structure 5275A in Southbury. The project has been delayed due to outages being recalled during recent storms and these Sunday work hours are necessary to allow the Project to recoup time lost to complete this work within the scheduled outage window on the 1485 Line.

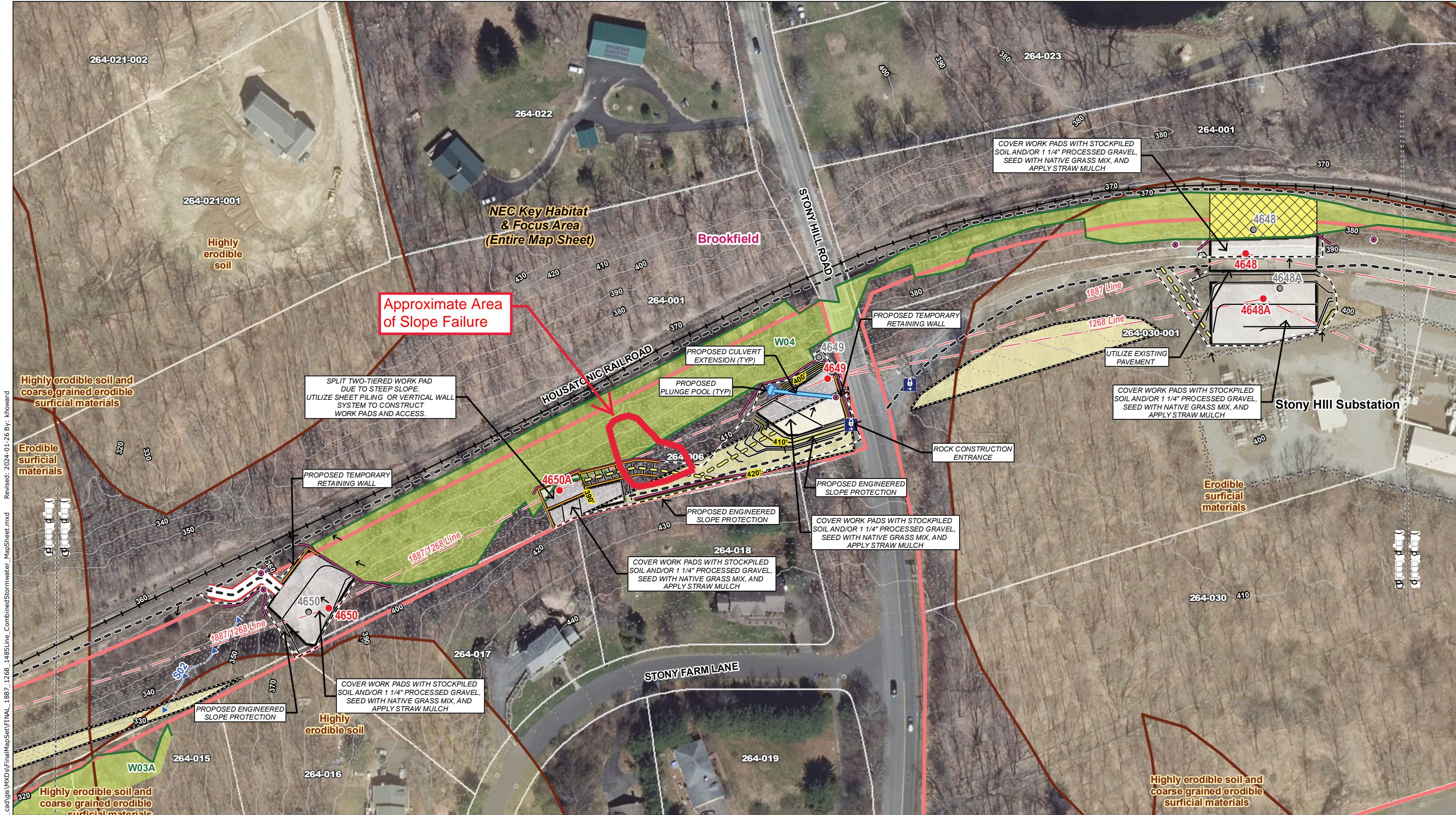
We have notified the Town of Southbury of our intention to submit this request to the Council. We will continue to work with the Town of Southbury and nearby abutters to apprise them of the work and to resolve any potential conflicts or concerns.

Please contact me if you have any questions regarding this request.

Sincerely,

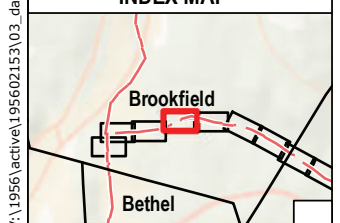
A handwritten signature in cursive script that reads "Deborah Denfeld".

Deborah Denfeld  
Team Lead – Transmission Siting  
deborah.denfeld@eversource.com



VA:1956\active\19560215\303\_data\gis\_cad\gis\_FinalMapSet\FINAL\_1887\_1268\_1485Line\_CombinedStormwater\_MapSheet.mxd Revised: 2024-01-26 By: khoward

**INDEX MAP**



**Legend**

The legend defines symbols for various features on the map:

- Geometric Shapes:** Circles, squares, and rectangles representing different types of structures or markers.
- Lines:** Solid, dashed, and double lines representing various boundaries, easements, or utility lines.
- Fill Patterns:** Hatched areas representing specific soil types or erosion risk zones.
- Text Labels:** Symbols for specific utility markers or structures like 'W04', 'W03A', and 'S02'.

**Map Notes:**  
 Coordinate System: NAD 1983 StatePlane Connecticut FIPS 0600 Feet  
 Data source: Eversource easement lines, structures, and transmission lines provided by Eversource Energy. Wetlands and streams by Stantec/FHI in May and June 2021. Vernal pool confirmations completed by Stantec in May 2022. Additional sources include: CT DEEP.

**EVERSOURCE ENERGY**  
**1887/1268/1485 Line - Structure Replacement and OPGW Project, COMBINED Phase 1 and Phase 2 Stormwater Pollution Control Plan**

b kR1 ) c p Lv v 12 D p t C

m p p c j k c d

PLAc(

Stantec