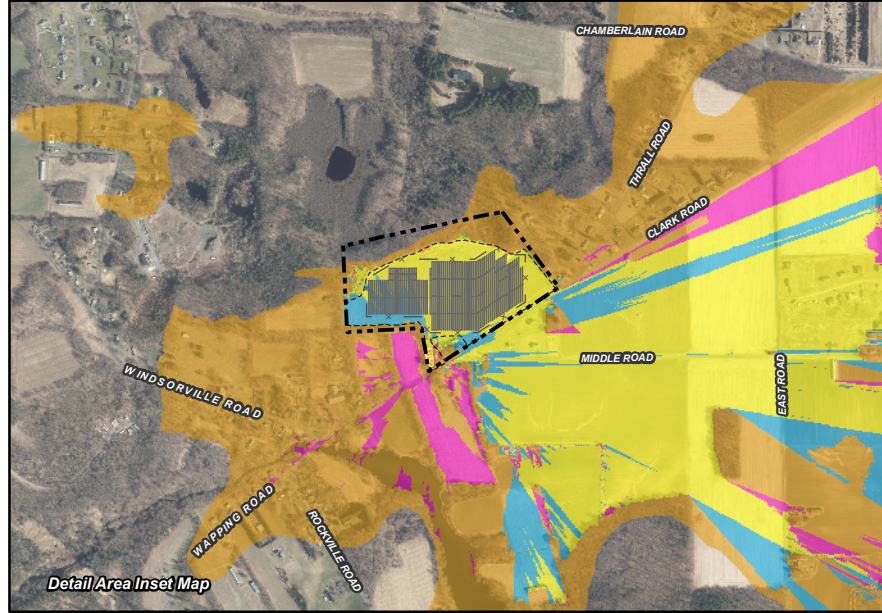


Statewide and Regional Overview Map



Detail Area Inset Map

Viewshed Analysis Map

Proposed Solar Energy Facility
 East Windsor Solar Two
 31 Thrall Road
 East Windsor, Connecticut

Proposed solar modules to be mounted on approximate 10' AGL support structures. Proposed interconnect utility poles to be approximately 40' AGL. Forest canopy height and topographic contours are derived from LiDAR data. Study area encompasses a 1-mile radius and includes 2,667 acres. Information provided on this map has not been field verified. Base Map Source: 2019 Aerial Photograph (CTECO) Map Date: March 2023

Legend

- Site
- Utility Pole
- Fence
- Solar Modules
- Limit of Disturbance
- Study Area (1-Mile Radius)
- Areas of Potential Seasonal Visibility, Proposed Utility Poles and/or Modules (390 Acres)
- Predicted Year-Round Visibility (350 Acres Total)
- Proposed Modules Only (55 Acres)
- Proposed Utility Poles Only 101 Acres)
- Municipal Boundary
- Trail
- CT Blue Blaze Hiking Trail
- Scenic Highway
- DEEP Boat Launches
- Municipal and Private Open Space Property
- State Forest/Park
- Protected Open Space Property
- Federal
- Land Trust
- Municipal
- Private
- State

Data Sources:

Physical Geography / Background Data
 A digital surface model (DSM) was created from the State of Connecticut 2016 LiDAR LAS data points. The first return LiDAR LAS values, associated with the highest feature in the landscape (such as a treetop or top of building), were used to capture the natural and built features on the Earth's surface beyond the approximate limits of clearing associated with the proposed solar facility. The "bare-earth" return values were utilized to reflect proposed conditions where vegetative clearing associated with the proposed solar facility would occur.

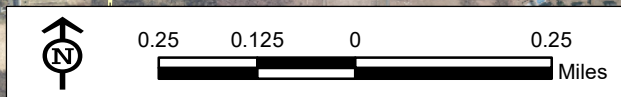
Municipal Open Space, State Recreation Areas, Trails, County Recreation Areas, and Town Boundary data obtained from CT DEEP. Scenic Roads: CTDOT State Scenic Highways (2015); Municipal Scenic Roads (compiled by APT)

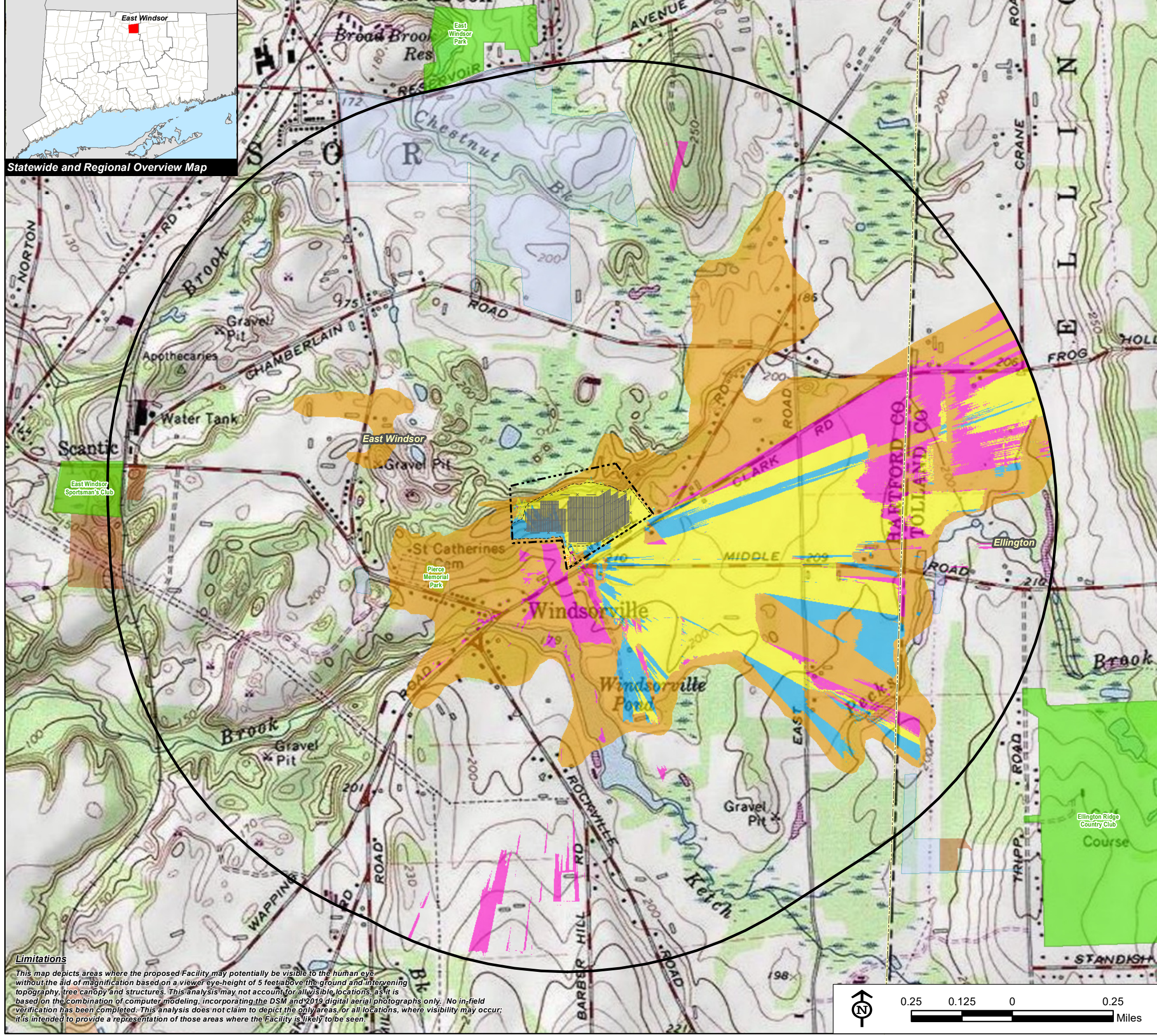
Dedicated Open Space & Recreation Areas
 Connecticut Department of Energy and Environmental Protection (DEEP): DEEP Property (May 2007); Federal Open Space (1997); Municipal and Private Open Space (1997); DEEP Boat Launches (1994)
 Connecticut Forest & Parks Association, Connecticut Walk Books East & West

Other
 CTDOT Scenic Strips (based on Department of Transportation data)

Notes
 **Not all the sources listed above appear on the Viewshed Maps. Only those features within the scale of the graphic are shown.

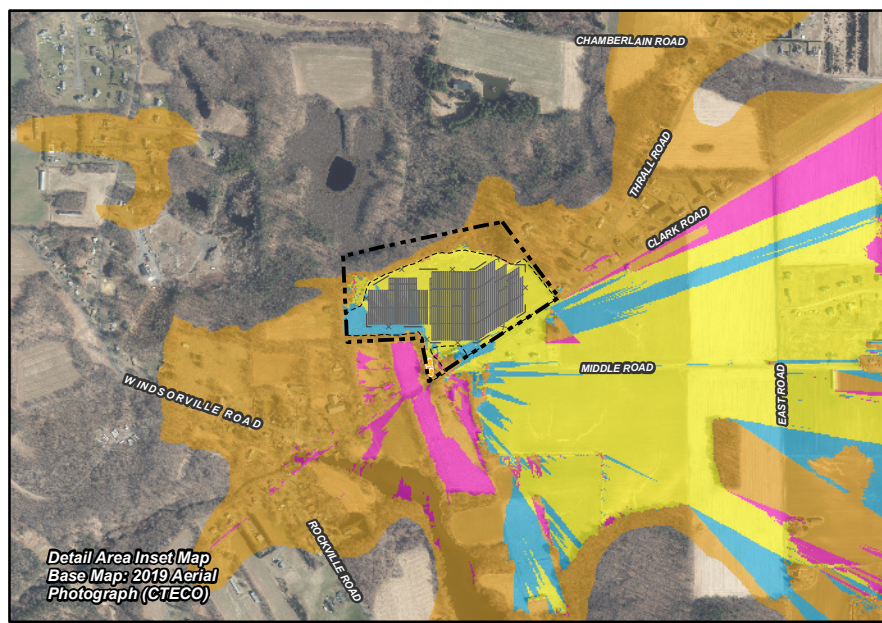
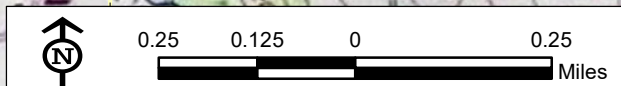
Limitations
 This map depicts areas where the proposed Facility may potentially be visible to the human eye without the aid of magnification based on a viewer eye-height of 5 feet above the ground and intervening topography, tree canopy and structures. This analysis may not account for all visible locations, as it is based on the combination of computer modeling, incorporating the DSM and 2019 digital aerial photographs only. No in-field verification has been completed. This analysis does not claim to depict the only areas, or all locations, where visibility may occur; it is intended to provide a representation of those areas where the Facility is likely to be seen.





Statewide and Regional Overview Map

Limitations
 This map depicts areas where the proposed Facility may potentially be visible to the human eye without the aid of magnification based on a viewer eye-height of 5 feet above the ground and intervening topography, tree canopy and structures. This analysis may not account for all visible locations, as it is based on the combination of computer modeling, incorporating the DSM and 2019 digital aerial photographs only. No in-field verification has been completed. This analysis does not claim to depict the only areas, or all locations, where visibility may occur; it is intended to provide a representation of those areas where the Facility is likely to be seen.



Detail Area Inset Map
 Base Map: 2019 Aerial Photograph (CTECO)

Viewshed Analysis Map

Proposed Solar Energy Facility
 East Windsor Solar Two
 31 Thrall Road
 East Windsor, Connecticut

Proposed solar modules to be mounted on approximate 10' AGL support structures. Proposed interconnect utility poles to be approximately 40' AGL. Forest canopy height and topographic contours are derived from LiDAR data. Study area encompasses a 1-mile radius and includes 2,667 acres. Information provided on this map has not been field verified.
 Base Map Source: USGS 7.5 Minute Topographic Quadrangle Map, Broad Brook, CT (1984)
 Map Date: March 2023

Legend

- Site
- Utility Pole
- Fence
- Solar Modules
- Limit of Disturbance
- Study Area (1-Mile Radius)
- Areas of Potential Seasonal Visibility, Proposed Utility Poles and/or Modules (390 Acres)
- Predicted Year-Round Visibility (350 Acres Total)
 - Proposed Modules and Utility Poles (194 Acres)
 - Proposed Modules Only (55 Acres)
 - Proposed Utility Poles Only 101 Acres)
 - Municipal Boundary
- Trail
- CT Blue Blaze Hiking Trail
- Scenic Highway
- DEEP Boat Launches
- Municipal and Private Open Space Property
- State Forest/Park
- Protected Open Space Property
 - Federal
 - Land Trust
 - Municipal
 - Private
 - State

Data Sources:

Physical Geography / Background Data
 A digital surface model (DSM) was created from the State of Connecticut 2016 LiDAR LAS data points. The first return LiDAR LAS values, associated with the highest feature in the landscape (such as a rooftop or top of building), were used to capture the natural and built features on the Earth's surface beyond the approximate limits of clearing associated with the proposed solar facility. The "bare-earth" return values were utilized to reflect proposed conditions where vegetative clearing associated with the proposed solar facility would occur.

Municipal Open Space, State Recreation Areas, Trails, County Recreation Areas, and Town Boundary data obtained from CT DEEP. Scenic Roads: CTDOT State Scenic Highways (2015); Municipal Scenic Roads (compiled by APT)

Dedicated Open Space & Recreation Areas
 Connecticut Department of Energy and Environmental Protection (DEEP): DEEP Property (May 2007); Federal Open Space (1997); Municipal and Private Open Space (1997); DEEP Boat Launches (1994)
 Connecticut Forest & Parks Association, Connecticut Walk Books East & West

Other
 CTDOT Scenic Strips (based on Department of Transportation data)

Notes
 **Not all the sources listed above appear on the Viewshed Maps. Only those features within the scale of the graphic are shown.

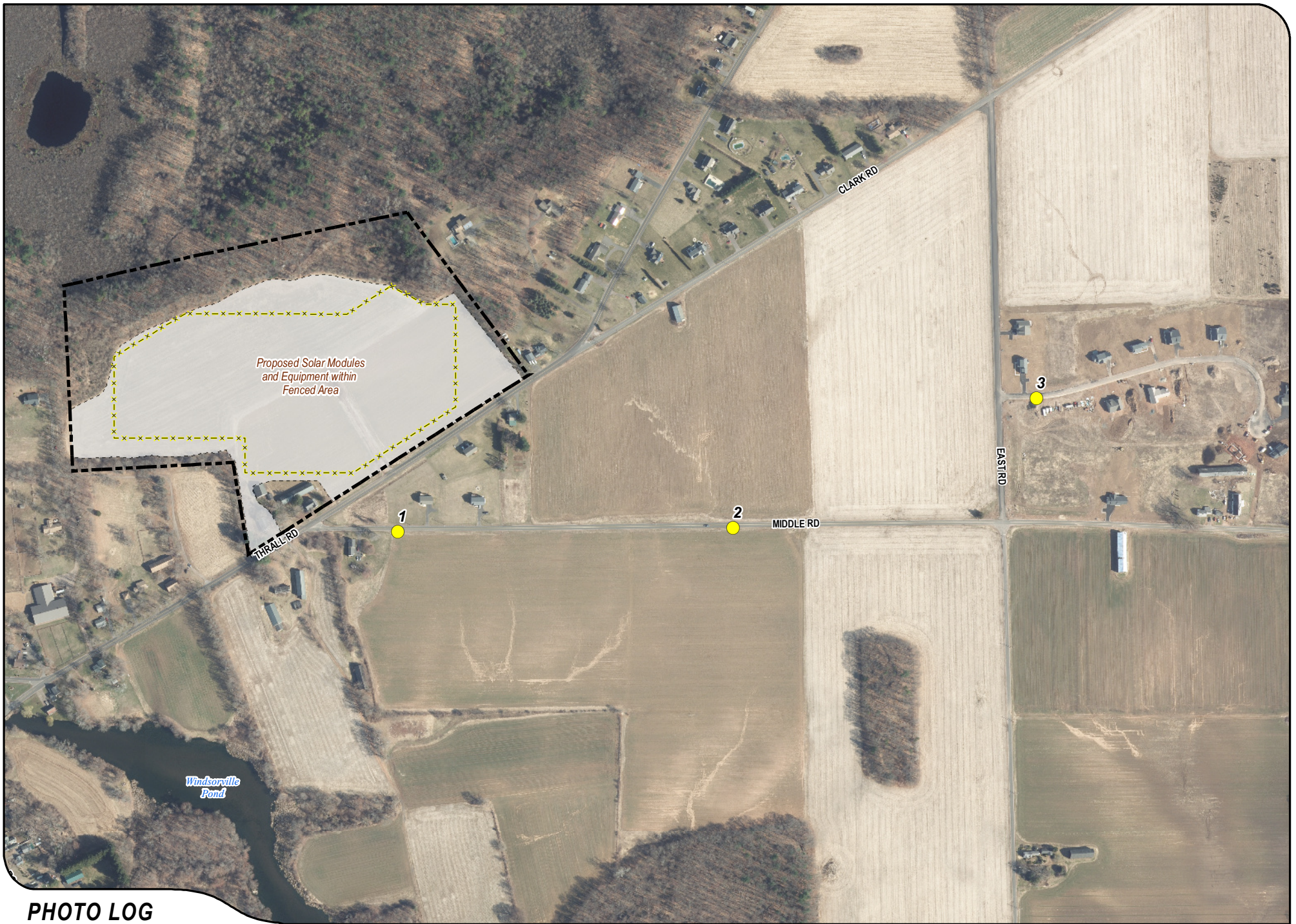


PHOTO LOG

Legend

 Site  Proposed Project Area  Proposed Fence  Photographic Location



500 250 0 500
1 inch = 500 feet
Feet



East Windsor Solar Two, LLC



PHOTOGRAPHED ON 3/7/2023

EXISTING

PHOTO

1

LOCATION
MIDDLE ROAD

ORIENTATION
NORTH



East Windsor Solar Two, LLC



PROPOSED

PHOTO

1

LOCATION
MIDDLE ROAD

ORIENTATION
NORTH



PHOTOGRAPHED ON 3/7/2023

EXISTING

PHOTO

2

LOCATION
MIDDLE ROAD

ORIENTATION
NORTHWEST



East Windsor Solar Two, LLC



PROPOSED

PHOTO

2

LOCATION

MIDDLE ROAD

ORIENTATION

NORTHWEST



East Windsor Solar Two, LLC



PHOTOGRAPHED ON 3/7/2023

EXISTING

PHOTO

3

LOCATION
JESSIE LANE

ORIENTATION
WEST



East Windsor Solar Two, LLC



PROPOSED

PHOTO

3

LOCATION
JESSIE LANE

ORIENTATION
WEST