



STATE OF CONNECTICUT
CONNECTICUT SITING COUNCIL

Ten Franklin Square, New Britain, CT 06051

Phone: (860) 827-2935 Fax: (860) 827-2950

E-Mail: siting.council@ct.gov

Web Site: portal.ct.gov/csc

VIA ELECTRONIC MAIL

May 8, 2024

Kristen Grillo
Bloom Energy Corporation
4353 North First Street
San Jose, CA 95134
Kristen.Grillo@bloomenergy.com

RE: **PETITION NO. 1564** - Bloom Energy Corporation Declaratory Ruling, pursuant to Connecticut General Statutes §4-176 and §16-50k, for the construction, maintenance and operation of a customer-side 2-megawatt fuel cell facility and associated equipment located at Central Connecticut State University, 1615 Stanley Street, New Britain, Connecticut.
Request for Project Change.

Dear Kristen Grillo:

The Connecticut Siting Council (Council) is in receipt of your correspondence dated May 7, 2024 regarding a project change for the above-referenced Declaratory Ruling issued by the Council on May 26, 2023.

Pursuant to Condition No. 1 of the Council's May 26, 2023, Declaratory Ruling, the request to change the natural gas point of interconnection from a location on Wells Street to a natural gas service line located north of the facility is hereby approved.

This approval applies only to the project change in the correspondence dated May 7, 2024.

Please be advised that deviations from the standards established by the Council in the Declaratory Ruling are enforceable under the provisions of Connecticut General Statutes §16-50u.

Thank you for your attention and cooperation.

Sincerely,

Melanie Bachman
Executive Director

MAB/IN

c: Service List dated March 23, 2023

What Powers You

May 7th, 2024

Melanie Bachman, Esq.
Executive Director
Connecticut Siting Council
10 Franklin Square
New Britain, CT 06051

RE: PETITION NO. 1564 - Bloom Energy Corporation petition for a declaratory ruling, pursuant to Connecticut General Statutes §4-176 and §16-50k, for the proposed construction, maintenance and operation of a customer-side 2-megawatt fuel cell facility and associated equipment to be located at Central Connecticut State University, 1615 Stanley Street, New Britain, Connecticut.

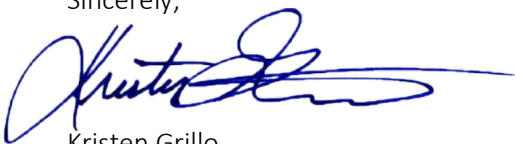
Dear Ms. Bachman,

On May 25th, 2023, the Connecticut Siting Council (“Council”) approved by declaratory ruling a proposed Bloom Energy Corporation (“Bloom”) fuel cell facility (the “Facility”) at the Central Connecticut State University located at 1615 Stanley Street, New Britain CT (the “Site”).

A minor change has occurred to the gas utility point of connection location (Attachment 1). The gas utility preferred to change the connection from Wells Street to a service line that extends closer to the installation, located across the walkway from the site. This will be a shorter, more practical distance for them to route the gas line.

If you have any questions or need additional clarification regarding this change, please contact me at the information provided below. Thank you for your time.

Sincerely,



Kristen Grillo
Bloom Energy Corporation
Senior Permitting Specialist
kristen.grillo@bloomenergy.com
(917) 803-4511



Bloom Energy Corporation
4353 North First Street, San Jose, CA 95134
408 543 1500
www.bloomenergy.com

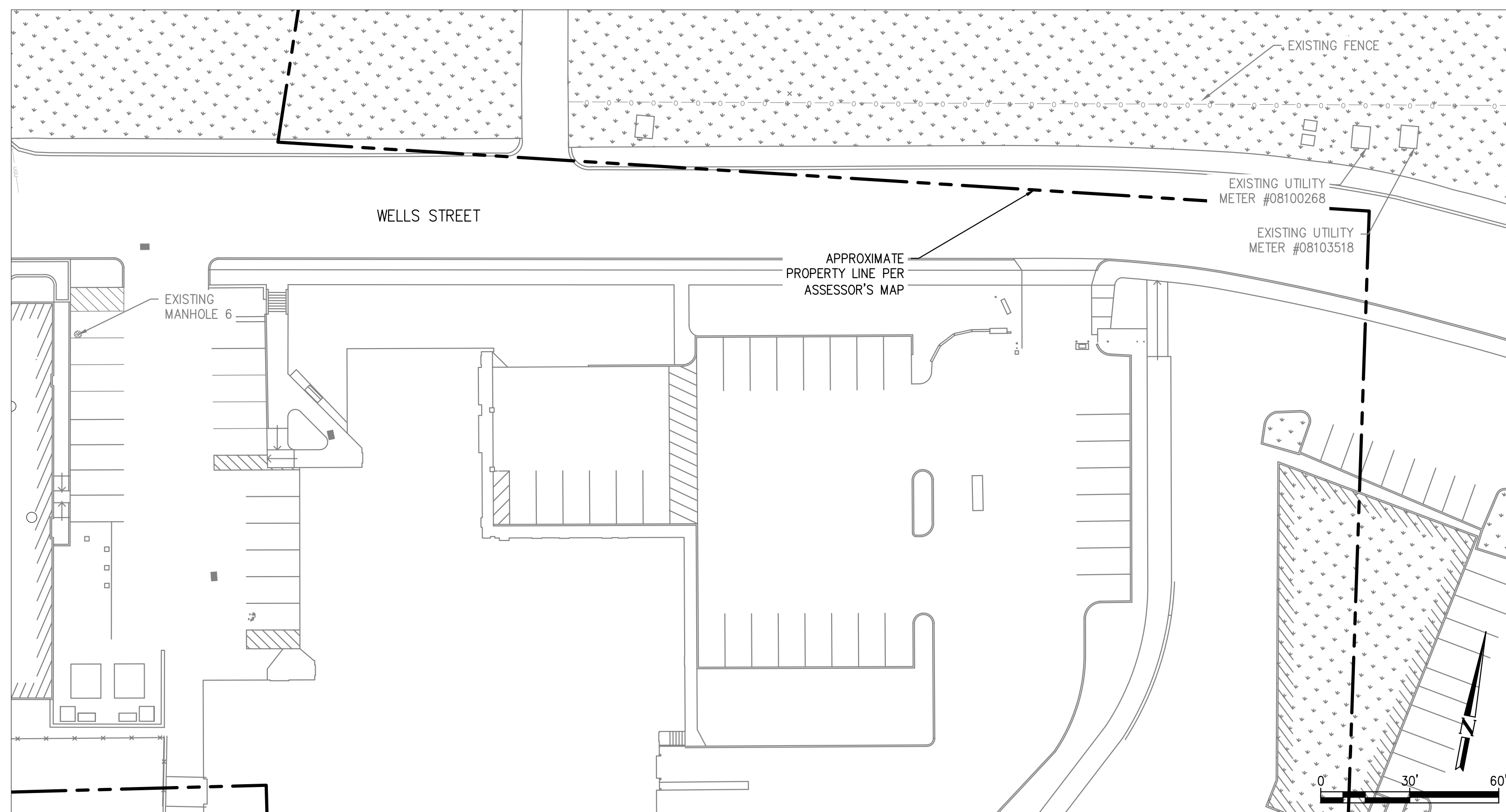
Attachment 1: Revised Site Plan



KEY SITE PLAN

SCALE: 1" = 500'

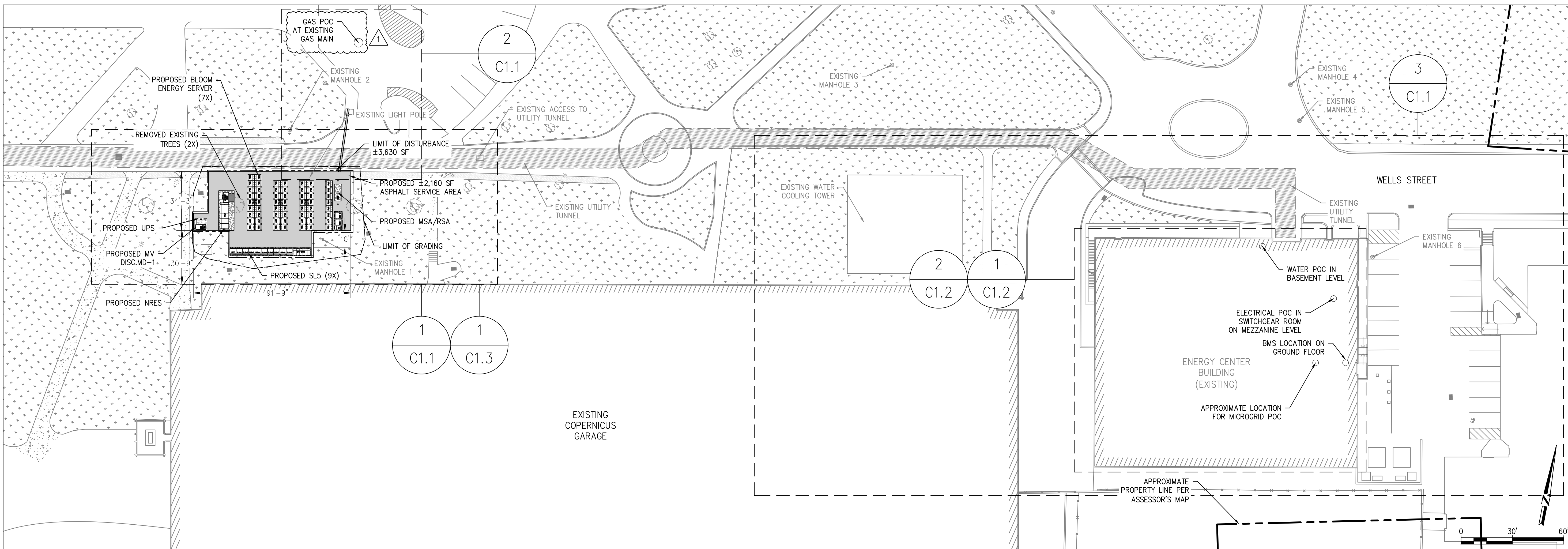
1
G1.1



OVERALL SITE PLAN

SCALE: 1" = 30'

3
G1.1



OVERALL SITE PLAN

SCALE: 1" = 30'

2
G1.1

CUSTOMER SITE

CENTRAL CONNECTICUT
STATE UNIVERSITY
2004 WELLS STREET
NEW BRITAIN, CT 06053



RELEASE HISTORY		
REV	ISSUE PURPOSE	DATE
0A	INITIAL RELEASE	12/20/2023
0B	REVISED PER PLAN REVIEW	03/08/2024
1	REVISED FOR IFC	06/26/2024

DESIGNED BY SCOTT BARD	REVIEWED BY KATE TAYLOR
DRAWN BY TANUJA S K	APPROVED BY CARSON TURNER

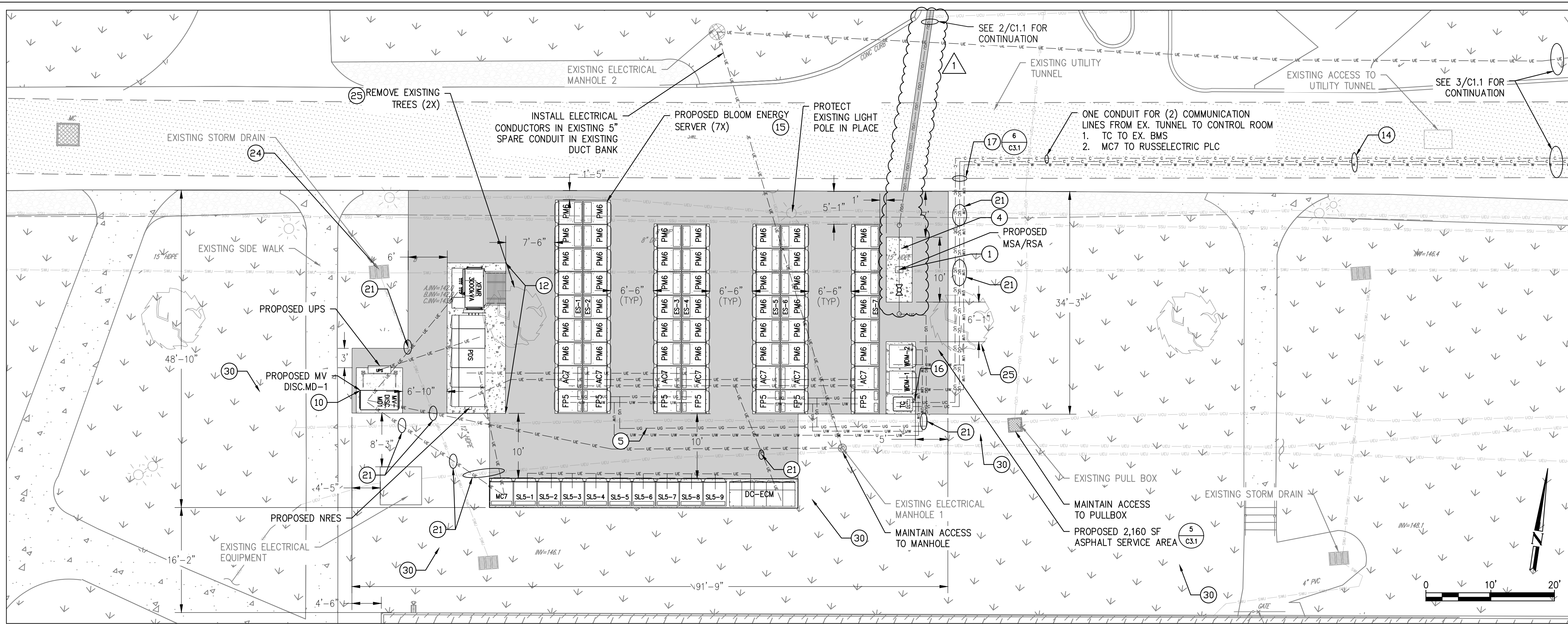
SHEET TITLE
OVERALL SITE PLAN

DRAWING NUMBER
G1.1

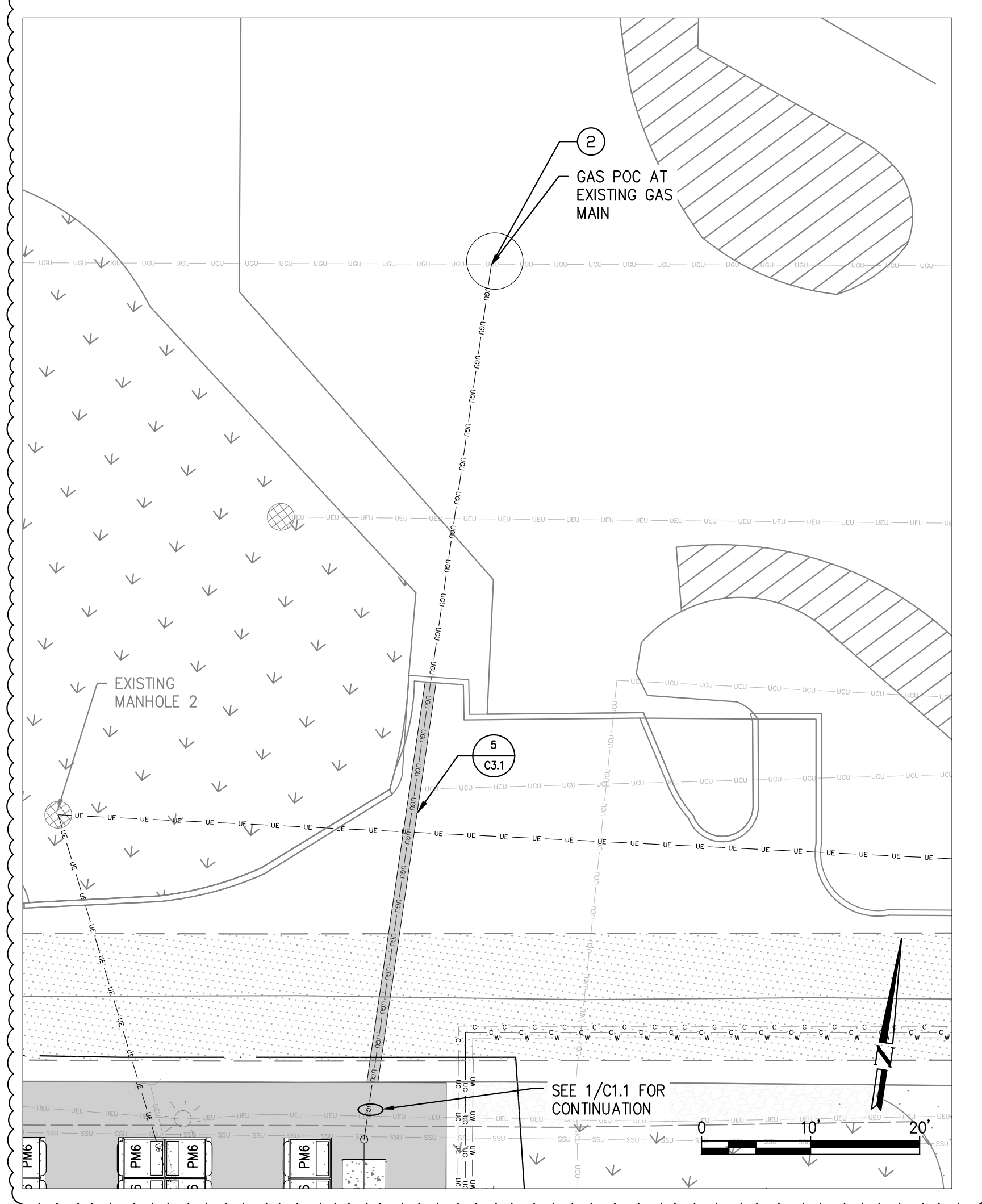
BLOOM ENERGY DOCUMENT NUMBER
DOC-1015260

THIS DRAWING IS 24" X 36" AT FULL SIZE
SITE ID: CTU008.0 SHEET 03 OF 21

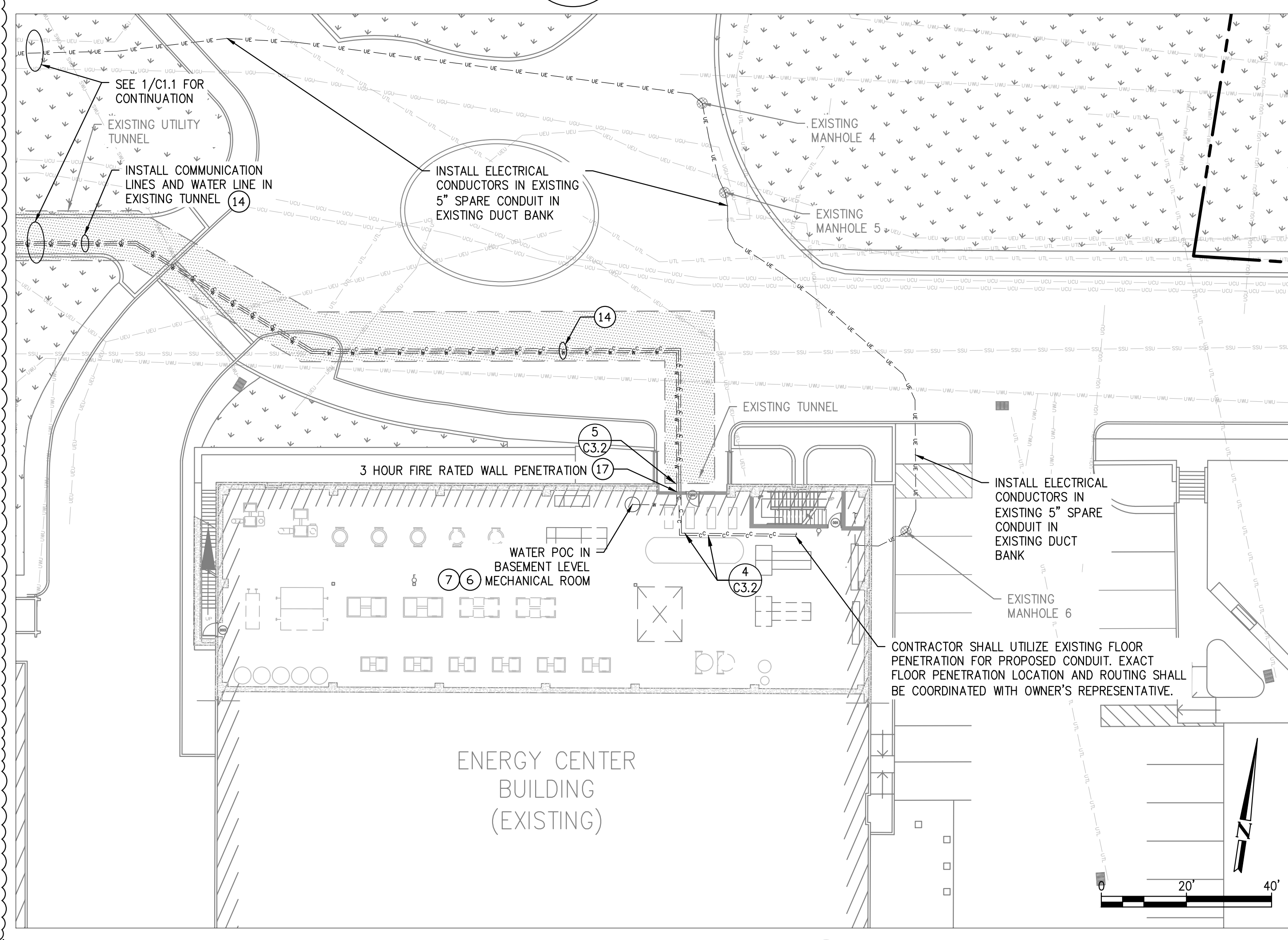
REFERENCE NOTE:
EXISTING SITE CONDITIONS ARE TAKEN FROM BING MAPS AND PARTIAL TOPOGRAPHIC AND UTILITY SURVEY FILE PREPARED BY CONTROL POINT ASSOCIATES, DATED 03/06/2023.



DETAILED SITE PLAN 1
SCALE: 1" = 10'



DETAILED SITE PLAN 2
SCALE: 1" = 10'



DETAILED SITE PLAN 3
SCALE: 1" = 20'

GENERAL NOTES

- CLEAN AND PRIME ALL PROPOSED WALL MOUNTED PIPING AND CONDUIT. PIPING AND CONDUIT SHALL BE PAINTED WITH EXTERIOR GRADE PAINT TO MATCH EXISTING WALL COLOR.
- CONDUITS AND PIPES MOUNTED TO BUILDING WALL SHALL BE SUPPORTED AS PER LOCAL CODE, RUN AT HEIGHT ABOVE DOORWAYS, AND STAND OFF WALL TO AVOID EXISTING CONDUITS AND PIPES.
- SEE BLOOM ENERGY PRODUCT INSTALLATION DRAWINGS FOR UTILITY CONNECTIONS TO ANCILLARY EQUIPMENT AND ENERGY SERVER.
- ALL EXISTING FEATURES SHALL REMAIN AND BE PROTECTED THROUGHOUT THE DURATION OF CONSTRUCTION UNLESS OTHERWISE NOTED ON PLANS.
- CONTRACTOR SHALL PROVIDE ELECTRICAL PILL BOXES EVERY 360 DEGREES OF HORIZONTAL AND VERTICAL BENDS. EXACT NUMBER AND LOCATION OF BOXES SHALL BE FIELD VERIFIED BY CONTRACTOR AND INSTALLED IN ACCORDANCE WITH NEC REQUIREMENTS.
- DIMENSIONS SHOWN BETWEEN THE SYSTEM(S) AND ANOTHER SYSTEM OR OBJECT REFERENCES THE SYSTEM PAD.

REFERENCE SHEET NOTES

- UTILITY SHALL FURNISH AND INSTALL GAS METER & REGULATOR ASSEMBLY WITH SHUT-OFF VALVE. CONTRACTOR SHALL PROVIDE AND INSTALL 4' X 10' CONCRETE PAD IN ACCORDANCE WITH UTILITY SPECIFICATIONS. COORDINATE ALL CONNECTIONS WITH GAS UTILITY.
- UTILITY SHALL PERFORM UNDERGROUND GAS SERVICE TAP, UTILITY RESPONSIBLE FOR SAWCUT, TRENCHING, TRENCH BACKFILL, GAS SERVICE LINE, AND ASPHALT PAVEMENT RESTORATION FROM GAS POC TO PROPOSED MSA LOCATION. UTILITY SHALL BORE UNDER SIDEWALKS FOR GAS LINE. CONTRACTOR SHALL REPAIR SIDEWALKS AND STAMPED ASPHALT PAVEMENT IN KIND IF DAMAGED BY UTILITY. CONTRACTOR RESPONSIBLE FOR ALL LANDSCAPE AND TURF RESTORATION PER REFERENCE SHEET NOTE 30. REFER TO GAS RISER DETAIL FOR ADDITIONAL REQUIREMENTS.
- BLOOM ENERGY SHALL FURNISH AND CONTRACTOR SHALL INSTALL PRIVATE GAS SHUT-OFF VALVE FOR BLOOM ENERGY. REFER TO GAS RISER DETAIL FOR ADDITIONAL REQUIREMENTS.
- FURNISH AND INSTALL GAS PIPE. REFER TO GAS RISER DETAIL FOR ADDITIONAL REQUIREMENTS.
- CONTRACTOR SHALL TAP EXISTING WATER LINE AT NEAREST ACCESSIBLE LOCATION IN BUILDING AS SHOWN WITH A LOCAL SHUT-OFF VALVE. REFER TO DOMESTIC WATER CONNECTION DETAIL FOR ADDITIONAL REQUIREMENTS.
- CONTRACTOR SHALL FURNISH AND INSTALL WATER PIPE. REFER TO WATER RISER DETAIL FOR ADDITIONAL REQUIREMENTS.
- BLOOM ENERGY SHALL FURNISH AND CONTRACTOR SHALL INSTALL DISCONNECT SWITCH. MOUNT DISCONNECT SWITCH PER MANUFACTURER AND UTILITY SPECIFICATIONS.
- CONTRACTOR SHALL TERMINATE ELECTRIC FEEDER AS SHOWN. REFER TO ELECTRICAL SINGLE LINE DIAGRAM FOR ADDITIONAL REQUIREMENTS.
- CONTRACTOR SHALL FURNISH AND INSTALL TWO GROUNDING RODS PLACED A MINIMUM OF 6' APART. REFER TO ELECTRICAL SINGLE LINE DIAGRAM FOR ADDITIONAL REQUIREMENTS.
- CONTRACTOR SHALL FURNISH AND INSTALL ELECTRICAL FEEDER. REFER TO ELECTRICAL SINGLE LINE DIAGRAM FOR ADDITIONAL REQUIREMENTS.
- CONTRACTOR SHALL MOUNT CONDUIT/PIPE TO INTERIOR TUNNEL WALL. COORDINATE EXACT ROUTING WITH CUSTOMER REPRESENTATIVE IN THE FIELD. REFER TO WALL MOUNTING DETAIL FOR ADDITIONAL REQUIREMENTS.
- BLOOM ENERGY SERVER MOUNTED ON A PRECAST CONCRETE PAD. PRECAST CONCRETE PAD DESIGNED BY PRECAST MANUFACTURER AND SUPPLIED BY BLOOM ENERGY. REFER TO PRODUCT INSTALLATION DRAWINGS FOR ADDITIONAL BLOOM ENERGY SERVER AND PRECAST PAD DETAILS, INCLUDING BUT NOT LIMITED TO, STUB UP DETAILS, PAD DIMENSIONS, AND PAD CUT OUT LOCATIONS. REFER TO SINGLE LINE DIAGRAM FOR UFER REQUIREMENTS.
- FACTORY WIRED ENERGY SERVER EMERGENCY POWER-OFF SWITCH (EPO).
- CONTRACTOR SHALL CORE CONDUIT AND/OR PIPE THROUGH WALL. SCAN WALL PRIOR TO CORING TO AVOID COLLATERAL DAMAGE TO EXISTING PLUMBING AND WIRING. REFER TO WALL PENETRATION DETAIL FOR ADDITIONAL REQUIREMENTS.
- CONTRACTOR SHALL PROTECT EXISTING UNDERGROUND UTILITY LINES FROM DAMAGE WHEN CROSSING WITH NEW UNDERGROUND UTILITIES. CONTRACTOR SHALL REPAIR OR REPLACE OF ANY DAMAGED LINES.
- CONTRACTOR SHALL FURNISH AND INSTALL STORM DRAIN PROTECTION OR APPROVED EQUAL WITH OUTFLOW PORTS AT STORM DRAIN INLET. REFER TO STORM DRAIN PROTECTION DETAIL FOR ADDITIONAL REQUIREMENTS.
- CONTRACTOR SHALL REMOVE EXISTING TREE AND STUMP TO A DEPTH NEEDED TO COMPLETE THE SCOPE OF WORK AS DESCRIBED IN THE DRAWING DETAILS.
- CONTRACTOR SHALL FURNISH AND INSTALL LANDSCAPE/TURF AS REQUIRED. REFER TO LANDSCAPE/TURF RESTORATION DETAIL FOR ADDITIONAL REQUIREMENTS. IRRIGATION SHALL BE PROTECTED AND REMAIN OPERATIONAL DURING CONSTRUCTION. THE CONTRACTOR IS RESPONSIBLE FOR EXTENDING AND/OR REROUTING IRRIGATION LINES AS NECESSARY AND THE REPAIR/REPLACEMENT IF ANY DAMAGE OCCURS. COORDINATE IRRIGATION CONTROLS WITH OWNER'S REPRESENTATIVE.

EXISTING UTILITY NOTE:
THE LOCATION OF EXISTING UTILITIES IS SHOWN FOR THE CONTRACTOR'S REFERENCE. EXACT LOCATION, DEPTH AND SIZE OF ALL EXISTING UTILITIES IS NOT KNOWN. CONTRACTOR SHALL ASSUME RESPONSIBILITY FOR ALL EXISTING UTILITIES NOT SHOWN ON THESE DRAWINGS. CONTRACTOR SHALL FIELD VERIFY LOCATION OF EXISTING UNDERGROUND UTILITIES AND PROTECT THE EXISTING UNDERGROUND LINES FROM DAMAGE WHEN CROSSING WITH NEW UNDERGROUND UTILITIES. THE CONTRACTOR SHALL BE RESPONSIBLE FOR REPAIR OR REPLACEMENT OF ANY DAMAGE LINES. THE CONTRACTOR SHALL NOTIFY THE ENGINEER IMMEDIATELY IF ANY FIELD CONDITIONS ENCOUNTERED DIFFER FROM THOSE REPRESENTED HEREON. SUCH CONDITIONS COULD RENDER THE DESIGNS HERE ON INAPPROPRIATE AND MAY REQUIRE ADJUSTMENTS TO AVOID CONFLICTS.

REFERENCE NOTE:
EXISTING SITE CONDITIONS ARE TAKEN FROM BING MAPS AND PARTIAL TOPOGRAPHIC AND UTILITY SURVEY FILE PREPARED BY CONTROL POINT ASSOCIATES, DATED 03/06/2023.



4353 N. FIRST STREET, SAN JOSE, CA 95134
t: (408) 543-1500 f: (408) 543-1501
www.bloomenergy.com

PROPRIETARY AND CONFIDENTIAL

BLOOM ENERGY CORPORATION ALL RIGHTS RESERVED. THIS DOCUMENT IS FOR REFERENCE ONLY AND MAY NOT BE USED WITHOUT THE WRITTEN PERMISSION OF BLOOM ENERGY. ANY REPRODUCTION IN PART OR AS A WHOLE WITHOUT PERMISSION OF BLOOM ENERGY IS PROHIBITED.



4353 N. FIRST STREET
SAN JOSE, CA 95134
t: (408) 543-1500

ENGINEER OF RECORD
CARSON TURNER, P.E.
LICENSE #: 22700

CUSTOMER SITE

CENTRAL CONNECTICUT
STATE UNIVERSITY
2004 WELLS STREET
NEW BRITAIN, CT 06053



RELEASE HISTORY

REV	ISSUE PURPOSE	DATE
0A	INITIAL RELEASE	12/20/2023
0B	REVISED PER PLAN REVIEW	03/08/2024
1	REVISED FOR IFC	06/26/2024

DESIGNED BY SCOTT BARD	REVIEWED BY KATE TAYLOR
DRAWN BY TANUJA S K	APPROVED BY CARSON TURNER

SHEET TITLE

DETAILED
SITE PLAN

DRAWING NUMBER

C1.1

BLOOM ENERGY DOCUMENT NUMBER

DOC-1015260

THIS DRAWING IS 24" X 36" AT FULL SIZE

SITE ID: CTU08.0 SHEET 04 OF 21