



## SOL-X TRACKER

The best in-class single-axis tracker is supported by Polar Racking, an industry leader in solar mounting solutions since 2009.

## KEY PRODUCT BENEFITS

### ✓ Flexibility & adaptability

- Adaptable table lengths for increased layout and design flexibility

### ✓ Best-in-class terrain following

- Up to +/-10% every table

### ✓ Assembly efficiencies

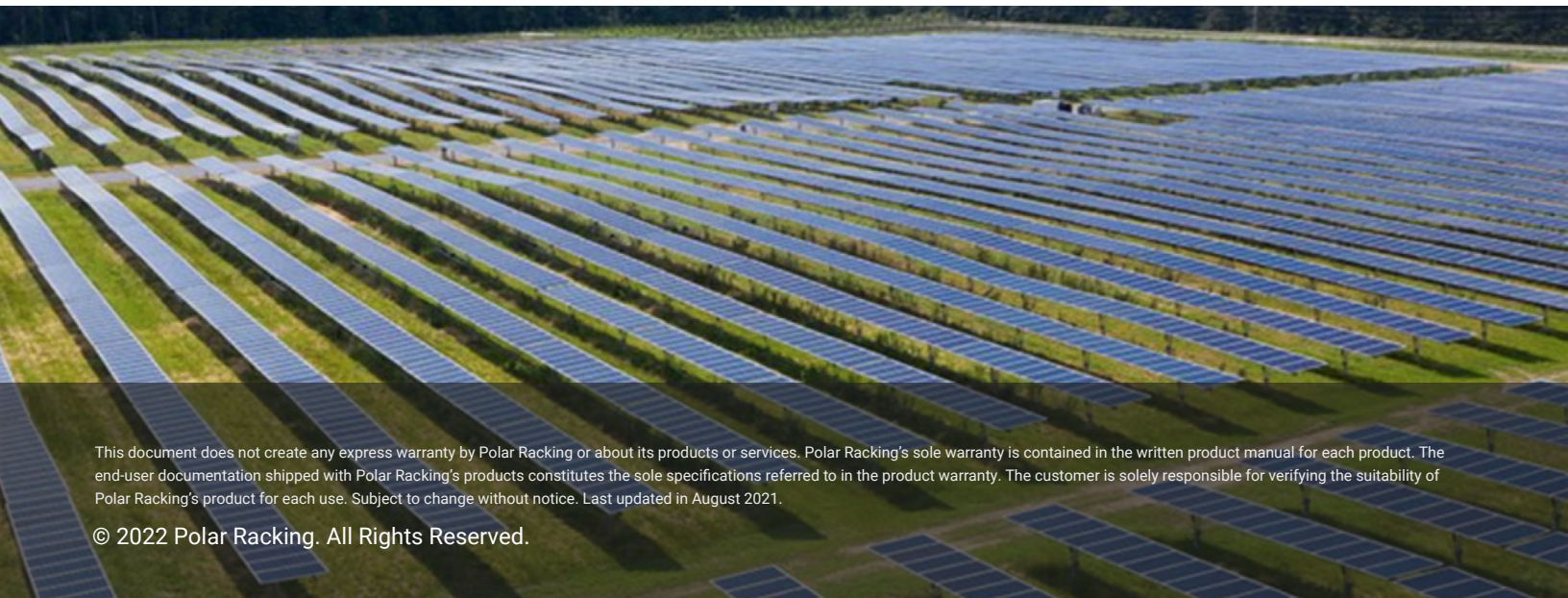
- No heavy or specialized equipment required. Lightweight components allow for simple handling
- Among the fewest components of any tracker on the market
- Fewer electrical components due to increased row lengths of up to 180 modules

### ✓ Simple design, higher impact

- No dampeners required, eliminating a high risk failure point
- Lack of torsional dynamic forces allows for less steel and reduced module loads
- Simple roll formed sections, no large torque tubes
- Highest density, longer rows and minimal gaps
- Independent rows, reduced O&M cost

### ✓ Bankability & lifetime value

- Powered by Polar Racking, the industry leader in designing and manufacturing solar products



This document does not create any express warranty by Polar Racking or about its products or services. Polar Racking's sole warranty is contained in the written product manual for each product. The end-user documentation shipped with Polar Racking's products constitutes the sole specifications referred to in the product warranty. The customer is solely responsible for verifying the suitability of Polar Racking's product for each use. Subject to change without notice. Last updated in August 2021.

## TECHNICAL DATA

<b>ROW LENGTH</b>	Up to 180 individual 72-cell modules driven per controller/motor
<b>TABLE LENGTH</b>	8-20 modules per independent table connected by a small driveshaft
<b>DRIVE UNIT</b>	Rugged design for 30-year field life in harsh environmental climates
<b>TERRAIN FOLLOWING</b>	Up to +/- 10% every table, limited to 5% change between tables
<b>WIND SPEED DESIGN</b>	Wind speed Fully configurable, typical 90 – 150 mph, 3-second gust per ASCE7-10
<b>ROTATIONAL RANGE (EAST / WEST)</b>	60 degrees - 60 degrees
<b>GROUND COVERAGE RATIO</b>	Fully configurable by customer, typically 0.20-0.65
<b>DC CAPACITY</b>	Typically 90kWp per tracker row
<b>SYSTEM VOLTAGE</b>	ETL certified, conforms to UL 2703 & ULC ORD 1703 (mechanical, electrical)
<b>MODULE ATTACHMENT</b>	UL-listed top clamps and direct bolts, compatible with all module types
<b>CONTROLLER</b>	Option 1: Self powered with battery backup Option 2: AC-powered 115V-240V (1 )
<b>TRACKING METHOD</b>	Time and location-based algorithm with backtracking
<b>REMOTE COMMUNICATION</b>	Secure monitoring and control tracker array in real-time via an encrypted cloud portal; SCADA solution available
<b>MOTOR TYPE</b>	24V DC motor
<b>WARRANTY</b>	15 years for structural components • 10 years for drive unit • 5 years for motor and controller • Additional coverage available

