

BRUCE L. MCDERMOTT
203.772.7787 DIRECT TELEPHONE
860.240.5723 DIRECT FACSIMILE
bmcdermott@murthalaw.com

June 16, 2023

Melanie A. Bachman, Esq.
Executive Director
Connecticut Siting Council
10 Franklin Square
New Britain, CT 06051

Re: Petition No. 1553 - Allen Place FC, LLC petition for a declaratory ruling, pursuant to Connecticut General Statutes §4-176 and §16-50k, for the proposed construction, maintenance and operation of a customer-side 250-kilowatt fuel combined heat and power cell facility and associated equipment near North Campus Hall in the northern portion of the Trinity College campus located at 159 Allen Place, Hartford, Connecticut

Dear Ms. Bachman:

Allen Place FC, LLC ("APFC") hereby submits to the Connecticut Siting Council ("Council") the following design change for review by the Council staff:

As depicted on the enclosed survey, APFC plans to install an approximate 11' x 16' Purge Gas Skid (the "Gas Skid") adjacent to the fuel cell facility. Previously, the purge gas system was within the Solid Oxide Fuel Cell ("SOFC") Skid with horizontal storage of gas cylinders. However, because OSHA standards do not allow horizontal storage of gas cylinders, APFC has decided to relocate the purge gas from inside the SOFC to the Gas Skid where it will be stored vertically. A 1.5" diameter pipe buried approximately 3' below ground and approximately 15' in length will be used to connect the Gas Skid to the fuel cell facility. The gas composition will be the same (96% nitrogen and 4% oxygen).

The purge gas is required to prevent oxidation of the solid oxide stack. In the unlikely event of an emergency shut down or loss of power from the grid, the purge gas is used to cool the stacks down to a safe temperature.

Murtha Cullina LLP
265 Church Street
New Haven, CT 06510
T 203.772.7700
F 203.772.7723

Melanie A. Bachman, Esq.
June 16, 2023
Page 2

Should you have any questions regarding this filing, please do not hesitate to contact me.

Very truly yours,

A handwritten signature in blue ink, appearing to read "Bruce L. McDermott", with a stylized flourish extending to the right.

Bruce L. McDermott

Enclosure

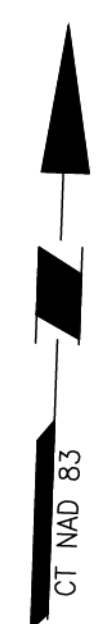
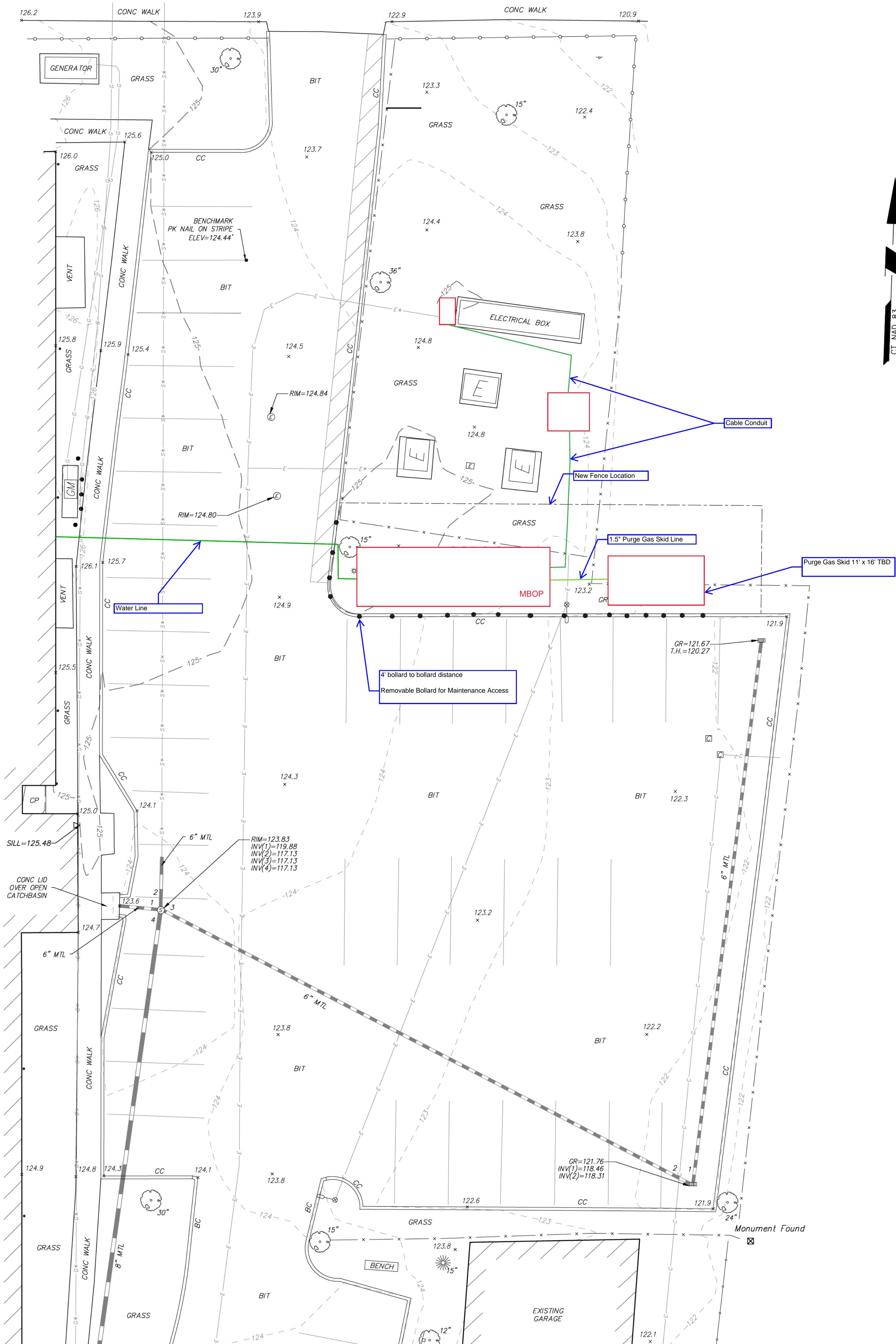
NOTES

- THIS SURVEY HAS BEEN PREPARED PURSUANT TO THE REGULATIONS OF CONNECTICUT STATE AGENCIES SECTIONS 20-300b-1 THROUGH 20-300b-20 AND THE "STANDARDS FOR SURVEYS AND MAPS IN THE STATE OF CONNECTICUT" AS ADOPTED BY THE CONNECTICUT ASSOCIATION OF LAND SURVEYORS, INC. ON SEPTEMBER 26, 1996.
 - THIS SURVEY IS A TOPOGRAPHIC SURVEY CONFORMING TO A T-2 ACCURACY. THE PURPOSE OF THIS SURVEY IS TO DEPICT SITE FEATURES FOR FUTURE SITE DEVELOPMENT.
- THE MERIDIAN OF THIS SURVEY IS REFERENCED TO CONNECTICUT STATE PLANE COORDINATE SYSTEM NAD 83 (EPOCH 2011). POSITION WAS DETERMINED BY GLOBAL NAVIGATION SATELLITE SYSTEMS (GNSS) AS PROVIDED BY HXGN SMARTNET CONTINUOUSLY OPERATED REFERENCE STATIONS (CORS).
- ELEVATIONS SHOWN ARE REFERENCED TO NORTH AMERICAN VERTICAL DATUM OF 1988 (NAVD88) (GEOID 12B) AS DETERMINED BY GNSS
- PLANIMETRIC AND TOPOGRAPHIC INFORMATION SHOWN HEREON HAS BEEN OBTAINED FROM GROUND SURVEYS BY LANGAN CT, INC. FIELD WORK COMPLETED DURING THE MONTH OF JANUARY 2023.
- AS PER THE NATIONAL FLOOD INSURANCE PROGRAM FIRM MAP ENTITLED "HARTFORD COUNTY, CONNECTICUT PANEL 364 OF 675, MAP NUMBER 09003C0364F, EFFECTIVE DATE SEPTEMBER 26, 2008" THE PROJECT AREA IS IN ZONE X (UNSHADED).
- UNLESS SPECIFICALLY NOTED HEREON, STORM AND SANITARY SEWER INFORMATION (INCLUDING PIPE INVERT, PIPE MATERIAL, AND PIPE SIZE) WAS OBSERVED AND MEASURED AT FIELD LOCATED STRUCTURES (MANHOLES/CATCH BASINS, ETC.). CONDITIONS CAN VARY FROM THOSE ENCOUNTERED AT THE TIMES WHEN AND LOCATIONS WHERE DATA IS OBTAINED. DESPITE MEETING THE REQUIRED STANDARD OF CARE, THE SURVEYOR CANNOT, AND DOES NOT WARRANT THAT PIPE MATERIAL AND/OR PIPE SIZE THROUGHOUT THE PIPE RUN ARE THE SAME AS THOSE OBSERVED AT EACH STRUCTURE, OR THAT THE PIPE RUN IS STRAIGHT BETWEEN THE LOCATED STRUCTURES.
- ADDITIONAL UTILITY (WATER, GAS, ELECTRIC ETC.) DATA MAY BE SHOWN FROM FIELD LOCATED SURFACE MARKINGS (BY GPRS INC.), EXISTING STRUCTURES, AND/OR FROM EXISTING DRAWINGS.
- UNLESS SPECIFICALLY NOTED HEREON, THE SURVEYOR HAS NOT EXCAVATED TO PHYSICALLY LOCATE THE UNDERGROUND UTILITIES. THE SURVEYOR MAKES NO GUARANTEES THAT THE SHOWN UNDERGROUND UTILITIES ARE EITHER IN SERVICE, ABANDONED OR SUITABLE FOR USE, NOR ARE IN THE EXACT LOCATION OR CONFIGURATION INDICATED HEREON.
- ALL BUILDINGS AND STRUCTURES WERE LOCATED AND MEASURED AT GROUND LEVEL. THE SURVEYOR MAKES NO DETERMINATIONS OR GUARANTEES AS TO THE ABSENCE, EXISTENCE OR LOCATION OF UNDERGROUND STRUCTURES, FOUNDATIONS, FOOTINGS, PROJECTIONS, WALLS, TANKS, SEPTIC SYSTEMS, ETC. NO TEST PITS, EXCAVATIONS OR GROUND PENETRATING RADAR WERE PERFORMED AS PART OF THIS SURVEY.
- PRIOR TO ANY DESIGN OR CONSTRUCTION, THE PROPER UTILITY AGENCIES MUST BE CONTACTED FOR VERIFICATION OF UTILITY TYPE AND FOR FIELD LOCATIONS.
- THIS SURVEY IS NOT VALID WITHOUT THE EMBOSSED OR INKED SEAL OF THE PROFESSIONAL.

NORTH CAMPUS HALL

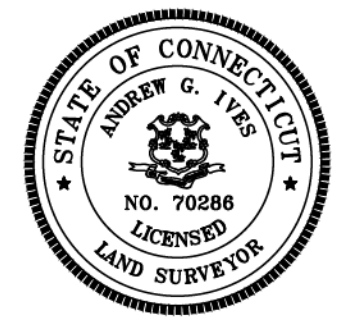
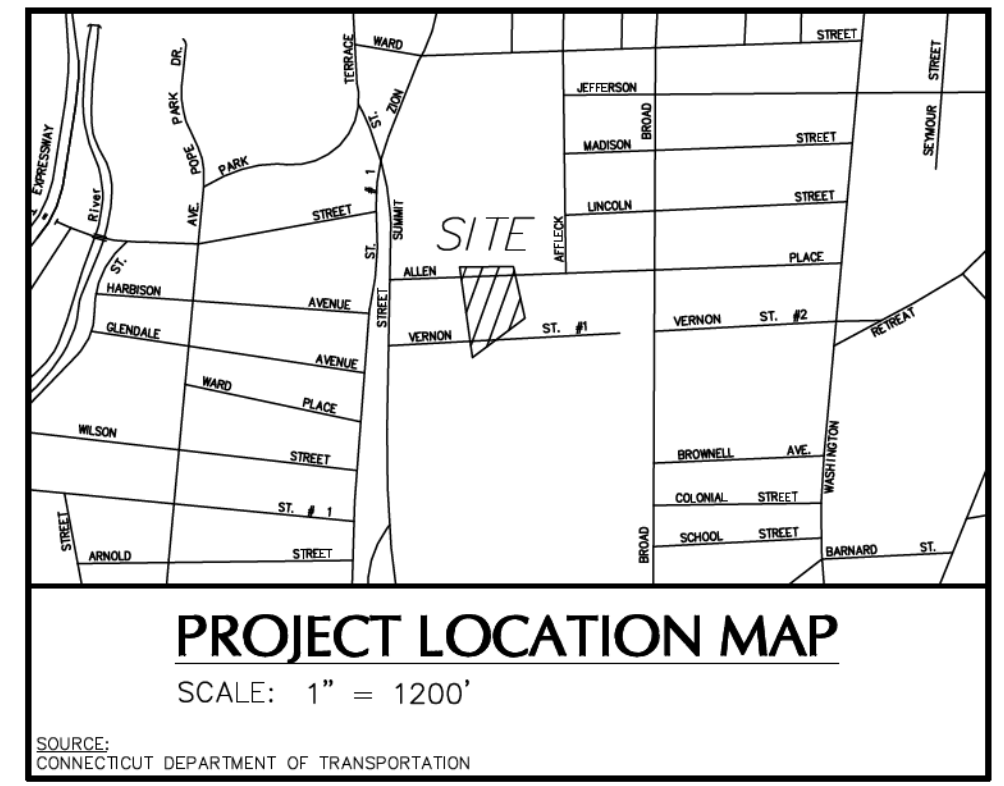
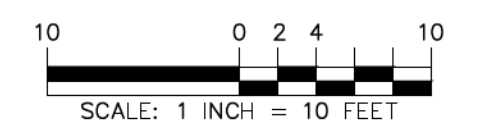
NORTH CAMPUS HALL

NORTH CAMPUS HALL



LEGEND (NOT SHOWN TO SCALE)

- AIR CONDITIONING UNIT
- BOLLARD
- DOOR
- SIGN
- TREE
- CATCH BASIN
- CLEANOUT
- ELECTRIC BOX
- ELECTRIC METER
- FIRE HYDRANT
- COMMUNICATION BOX
- GAS METER
- GAS VALVE
- LIGHT POLE
- MANHOLE (TYPE AS LABELED)
- ROOF DRAIN
- STANDPIPE
- WATER VALVE
- SPOT ELEVATION
- BITUMINOUS
- CONCRETE
- CONCRETE PAD
- LANDSCAPED AREA
- EDGE OF PAVEMENT
- BITUMINOUS CURB
- CONCRETE CURB
- TOP OF HOOD
- WOOD GUARD RAIL
- STOCKADE FENCE
- CHAINLINK FENCE
- IRON FENCE
- CONTOUR LINE
- DRAINAGE MARK OUT LINE
- ELECTRIC MARK OUT LINE
- COMMUNICATION MARK OUT LINE
- GAS MARK OUT LINE
- SANITARY SEWER MARK OUT LINE
- WATER MARK OUT LINE
- STEAM MARK OUT LINE
- UNKNOWN MARK OUT LINE
- REFERENCE UTILITY LINE (TYPE AS NOTED) - PLOTTED FROM EXISTING MAPPING



Date	Description	No.
REVISIONS		
"TO MY KNOWLEDGE AND BELIEF, THIS MAP IS SUBSTANTIALLY CORRECT AS NOTED HEREON."		
ANDREW G. IVES	DATE SIGNED	
PROFESSIONAL LAND SURVEYOR CT STATE LIC. NO. 70286		

LANGAN

Langan CT, Inc.
555 Long Wharf Drive
New Haven, CT 06511

T: 203.562.5771 F: 203.789.6142 www.langan.com

Project
TRINITY FUEL CELL ENERGY
159 & 163 ALLEN PLACE
HARTFORD CONNECTICUT

Drawing Title

TOPOGRAPHIC SURVEY

Project No. 140263101	Drawing No. VT101
Date JANUARY 9, 2023	
Drawn By JJC	
Checked By ACI	Sheet 1 of 1