

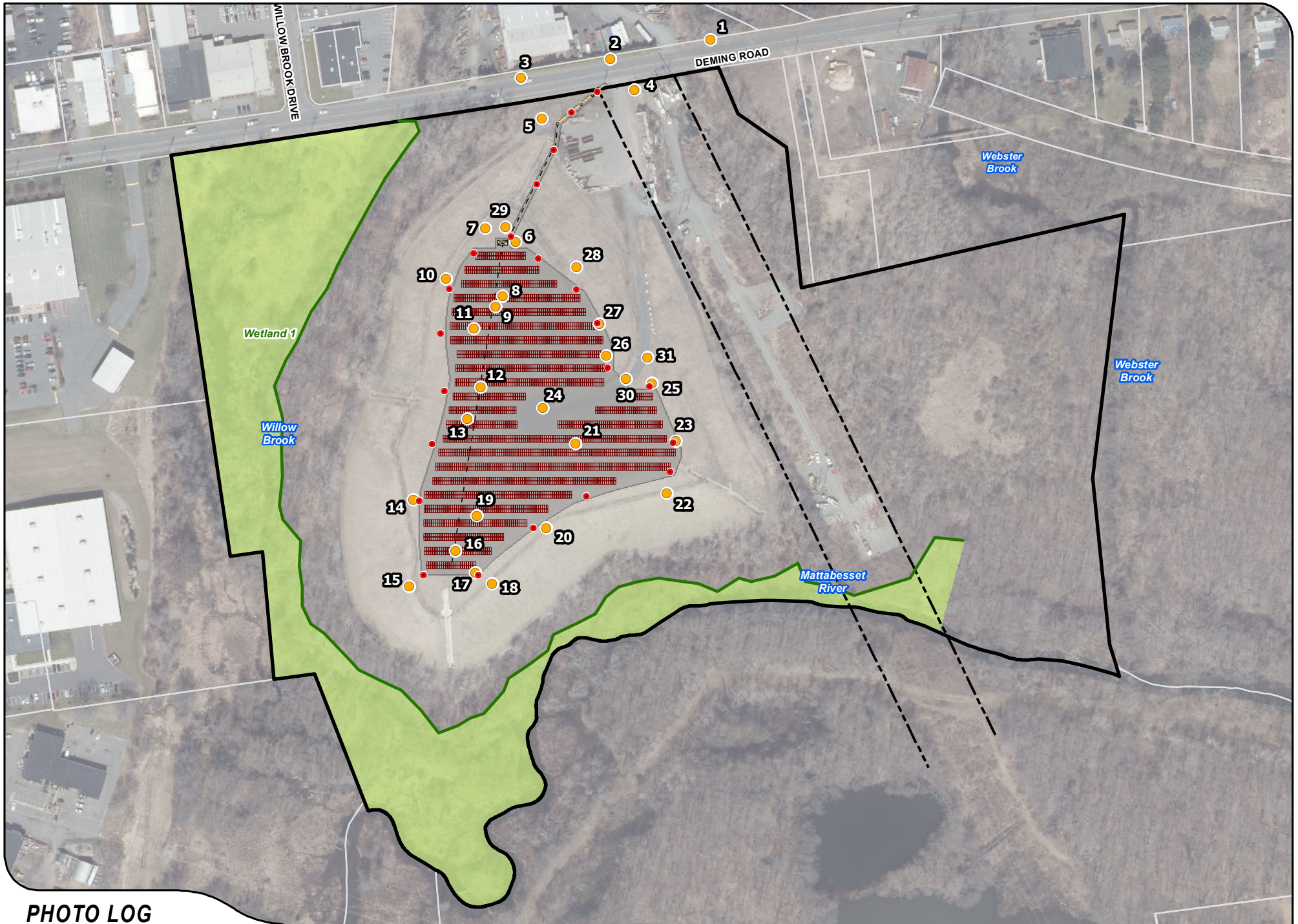
# REMOTE FIELD REVIEW



CT SITING COUNCIL PETITION NO. 1551  
RESPONSE TO INTERROGATORY #24  
NEW BRITAIN LANDFILL SOLAR  
DEMING ROAD  
BERLIN, CONNECTICUT

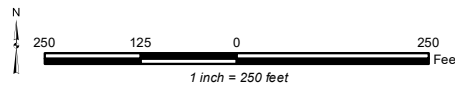
PREPARED FOR:  
C-TEC SOLAR  
The logo for C-TEC Solar consists of the word "CTEC" in a bold, blue, sans-serif font, with "SOLAR" in a smaller, blue, sans-serif font below it. To the right of the text is a square icon divided into four smaller squares, with the top-left and bottom-right squares colored blue and the top-right and bottom-left squares colored yellow.

PREPARED BY:  
**ALL-POINTS TECHNOLOGY CORPORATION, P.C.**  
567 Vauxhall Street Extension – Suite 311  
Waterford, CT 06385



### PHOTO LOG

- |                 |                      |                              |  |
|-----------------|----------------------|------------------------------|--|
| Photo Locations | Solar Modules        | Concrete Pad                 | Overhead Electrical Utility Right-of-Way |
| Photo Markers   | Interconnection Path | Interconnection Utility Pole | Approximate Parcel Boundary              |
| Site            | Electrical Path      | Limit of Disturbance         | Delineated Wetland Boundary              |
|                 |                      | Approximate Wetland Area     |  |





PHOTO

1

DESCRIPTION

**DEMING ROAD LOOKING SOUTHWEST**

PHOTOGRAPHED ON 1/27/2023



**PROPOSED INTERCONNECTION PATH**

PHOTO

2

DESCRIPTION

**DEMING ROAD LOOKING SOUTH**

PHOTOGRAPHED ON 1/27/2023



PHOTO

DESCRIPTION

3

**DEMING ROAD LOOKING SOUTHEAST**



PHOTO  
4A

DESCRIPTION  
LOOKING WEST

PHOTOGRAPHED ON 1/27/2023



**PROPOSED INTERCONNECTION PATH**

PHOTO  
**4B**

DESCRIPTION  
**LOOKING NORTH**

PHOTOGRAPHED ON 1/27/2023



**PROPOSED ELECTRICAL CABLE TRAY PATH**

PHOTO

5

DESCRIPTION

**LOOKING SOUTH**

PHOTOGRAPHED ON 1/27/2023



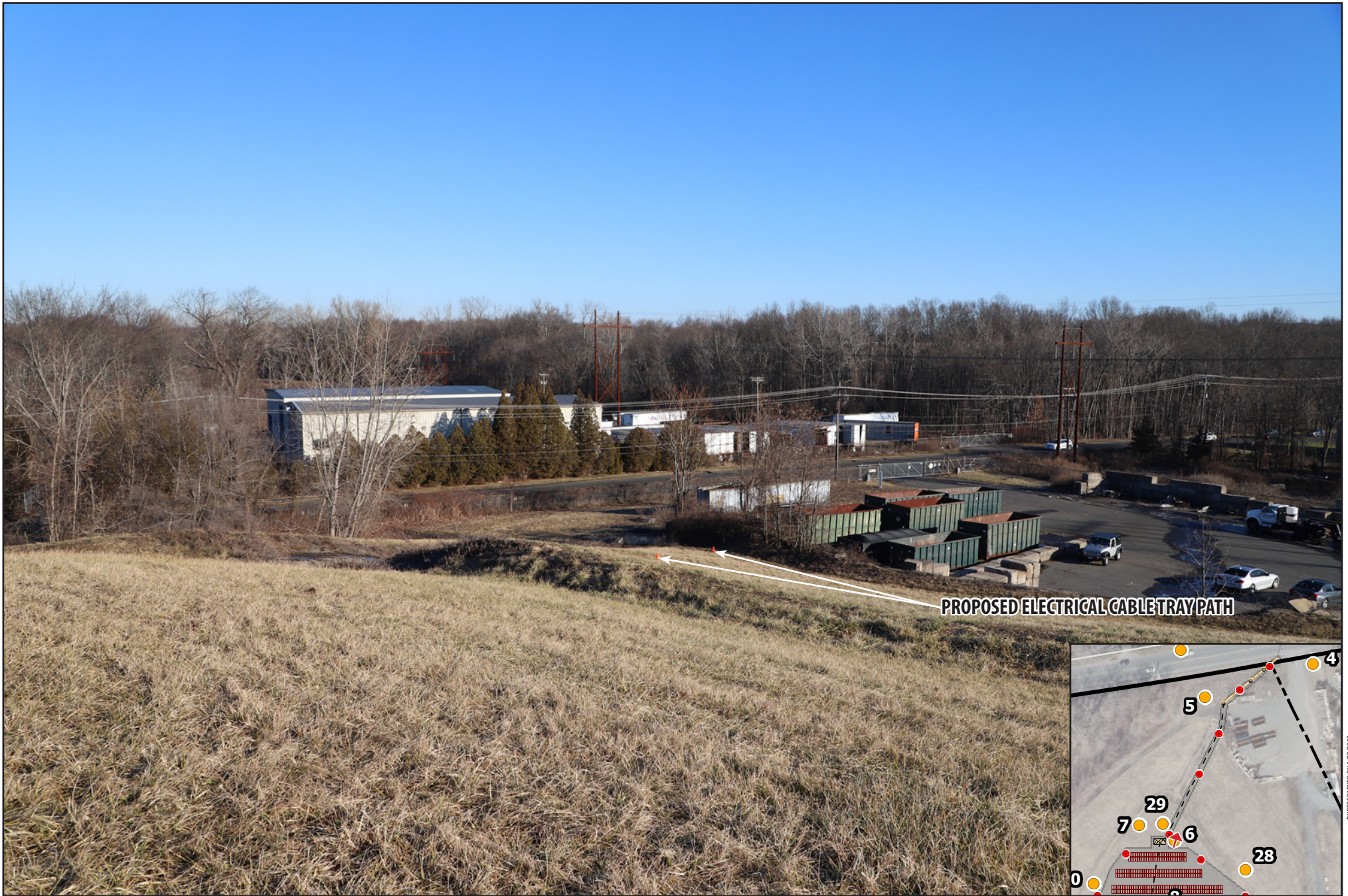


PHOTO  
6

DESCRIPTION  
LOOKING SOUTH

PHOTOGRAPHED ON 1/27/2023



PHOTO

7

DESCRIPTION

LOOKING SOUTHWEST

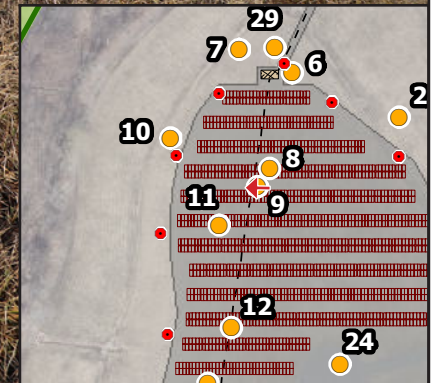


PHOTO

8

DESCRIPTION

LOOKING NORTHWEST



PHOTOGRAPHED ON 1/27/2023

PHOTO

9

DESCRIPTION

LOOKING WEST



PROPOSED LIMIT OF DISTURBANCE

PHOTO

10

DESCRIPTION

LOOKING SOUTH



PHOTOGRAPHED ON 1/27/2023

PHOTO

11

DESCRIPTION

LOOKING NORTHWEST



PHOTO  
12A

DESCRIPTION  
LOOKING NORTHWEST



PHOTOGRAPHED ON 1/27/2023

PHOTO  
**12B**

DESCRIPTION  
**LOOKING SOUTHWEST**





PHOTO

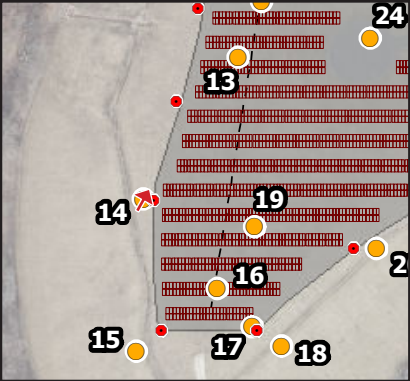
13

DESCRIPTION

LOOKING SOUTHWEST



**PROPOSED LIMIT OF DISTURBANCE**



PHOTOGRAPHED ON 1/27/2023

PHOTO

DESCRIPTION

14

LOOKING NORTHEAST



PHOTO

15

DESCRIPTION

LOOKING NORTHEAST



PHOTO

16

DESCRIPTION

LOOKING SOUTHEAST

PHOTOGRAPHED ON 1/27/2023



PHOTO

17

DESCRIPTION

LOOKING NORTHEAST

PHOTOGRAPHED ON 1/27/2023

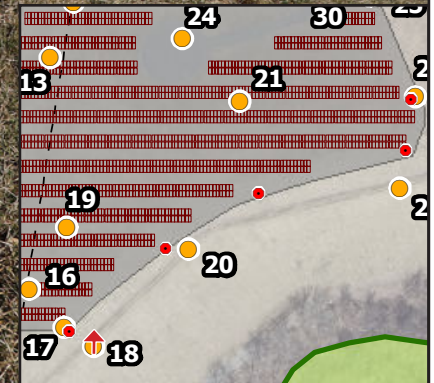


PHOTO

18

DESCRIPTION

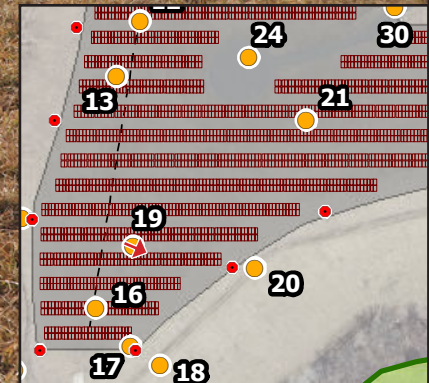
LOOKING NORTH



PHOTOGRAPHED ON 1/27/2023



PROPOSED LIMIT OF DISTURBANCE



PHOTO

19

DESCRIPTION

LOOKING SOUTHEAST

PHOTOGRAPHED ON 1/27/2023



PHOTO

20

DESCRIPTION

LOOKING NORTHWEST

PHOTOGRAPHED ON 1/27/2023





PHOTO

21

DESCRIPTION

LOOKING SOUTHEAST



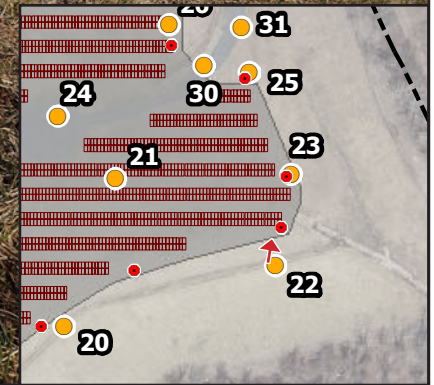
**PROPOSED LIMIT OF DISTURBANCE**

PHOTO

22

DESCRIPTION

LOOKING NORTH



PHOTOGRAPHED ON 1/27/2023



**PROPOSED LIMIT OF DISTURBANCE**

PHOTO

23

DESCRIPTION

**LOOKING NORTHWEST**

PHOTOGRAPHED ON 1/27/2023



NORTH



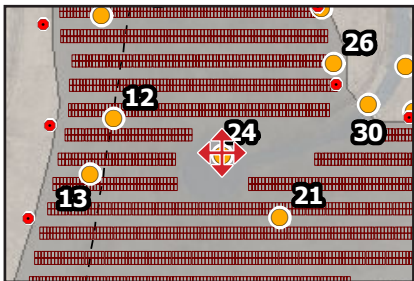
EAST



SOUTH



WEST



PHOTO

24

DESCRIPTION

VIEW FROM ACCESS DRIVE - FOUR CARDINAL POINTS

PHOTOGRAPHED ON 1/27/2023



PHOTOGRAPHED ON 1/27/2023

PHOTO  
25A

DESCRIPTION  
LOOKING NORTH



PHOTOGRAPHED ON 1/27/2023

PHOTO  
25B

DESCRIPTION  
LOOKING WEST



PHOTO

26

DESCRIPTION

LOOKING SOUTH

PHOTOGRAPHED ON 1/27/2023



PHOTO

27

DESCRIPTION

LOOKING SOUTH

PHOTOGRAPHED ON 1/27/2023





PHOTOGRAPHED ON 1/27/2023

PHOTO

28

DESCRIPTION

LOOKING SOUTHWEST



PROPOSED LIMIT OF DISTURBANCE

PHOTO

29

DESCRIPTION

LOOKING SOUTHEAST



PHOTO

30

DESCRIPTION

LOOKING NORTHEAST

PHOTOGRAPHED ON 1/27/2023



PHOTO

31

DESCRIPTION

LOOKING NORTH

PHOTOGRAPHED ON 1/27/2023