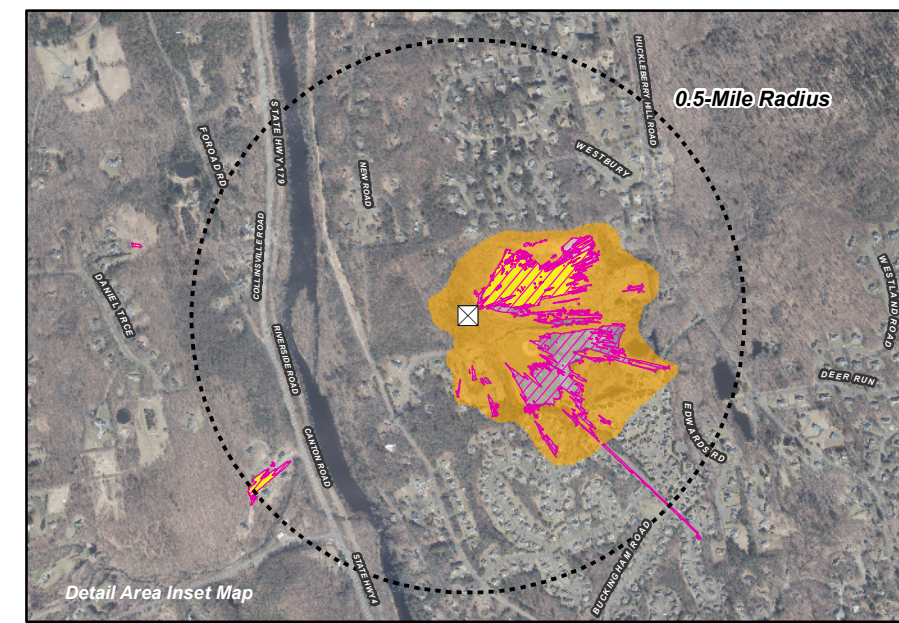


Statewide and Regional Overview Map

New Hartford

**Limitations**

This map depicts areas where the existing and proposed structures may potentially be visible to the human eye without the aid of magnification based on a viewer eye-height of 5 feet above the ground and intervening topography, tree canopy and structures. This analysis may not account for all visible locations, as it is based on the combination of computer modeling, incorporating the DSM and 2019 digital aerial photographs only. No in-field verification has been completed. This analysis does not claim to depict the only areas, or all locations, where visibility may occur; it is intended to provide a representation of those areas where the structures are likely to be seen.



## Comparative Viewshed Analysis Map Burlington-Avon Landfill (CT46143A)

Existing 100' AGL Wooden Tower and Proposed 130' AGL Monopole  
277 Huckleberry Hill Road  
Avon, Connecticut

Existing 100' AGL tower to be replaced with proposed 130' AGL monopole within existing equipment compound (to be expanded to accommodate proposed ground equipment)  
Forest canopy height is derived from LIDAR data.  
Study area encompasses a two-mile radius surrounding each site and includes 8,042 acres.  
Information provided on this map has not been field verified  
Base Map Source: 2019 Aerial Photograph (CTECO)  
Map Date: January 2023

**Legend**

- ☒ Site Location (Existing and Proposed)
- ⬡ Study Area (2-Mile Radius)
- 🟡 Predicted Year-Round Visibility - Existing 100' AGL Tower (11 Acres)
- 🟠 Predicted Year-Round Visibility - Proposed 130' AGL Tower (27 Acres)
- 🟠 Areas of Potential Seasonal Visibility - Existing and/or Proposed Tower (63 Acres)
- 🟡 Municipal Boundary
- 🟢 Trail
- 🔴 Scenic Highway
- 🚤 DEEP Boat Launches
- 🟢 Municipal and Private Open Space Property
- 🟢 State Forest/Park
- Protected Open Space Property**
- 🟡 Federal
- 🟠 Land Trust
- 🟢 Municipal
- 🟠 Private
- 🟢 State

**Data Sources:**

**Physical Geography / Background Data**  
A digital surface model (DSM) was created from the State of Connecticut 2016 LiDAR LAS data points. The DSM captures the natural and built features on the Earth's surface.

Municipal Open Space, State Recreation Areas, Trails, County Recreation Areas, and Town Boundary data obtained from CT DEEP. Scenic Roads: CTDOT State Scenic Highways (2015); Municipal Scenic Roads (compiled by APT)

**Dedicated Open Space & Recreation Areas**  
Connecticut Department of Energy and Environmental Protection (DEEP): DEEP Property (May 2007); Federal Open Space (1997); Municipal and Private Open Space (1997); DEEP Boat Launches (1994)

Connecticut Forest & Parks Association, Connecticut Walk Books East & West

**Other**  
CTDOT Scenic Strips (based on Department of Transportation data)

**Notes**  
\*\*Not all the sources listed above appear on the Viewshed Maps. Only those features within the scale of the graphic are shown.

