

# REMOTE FIELD REVIEW

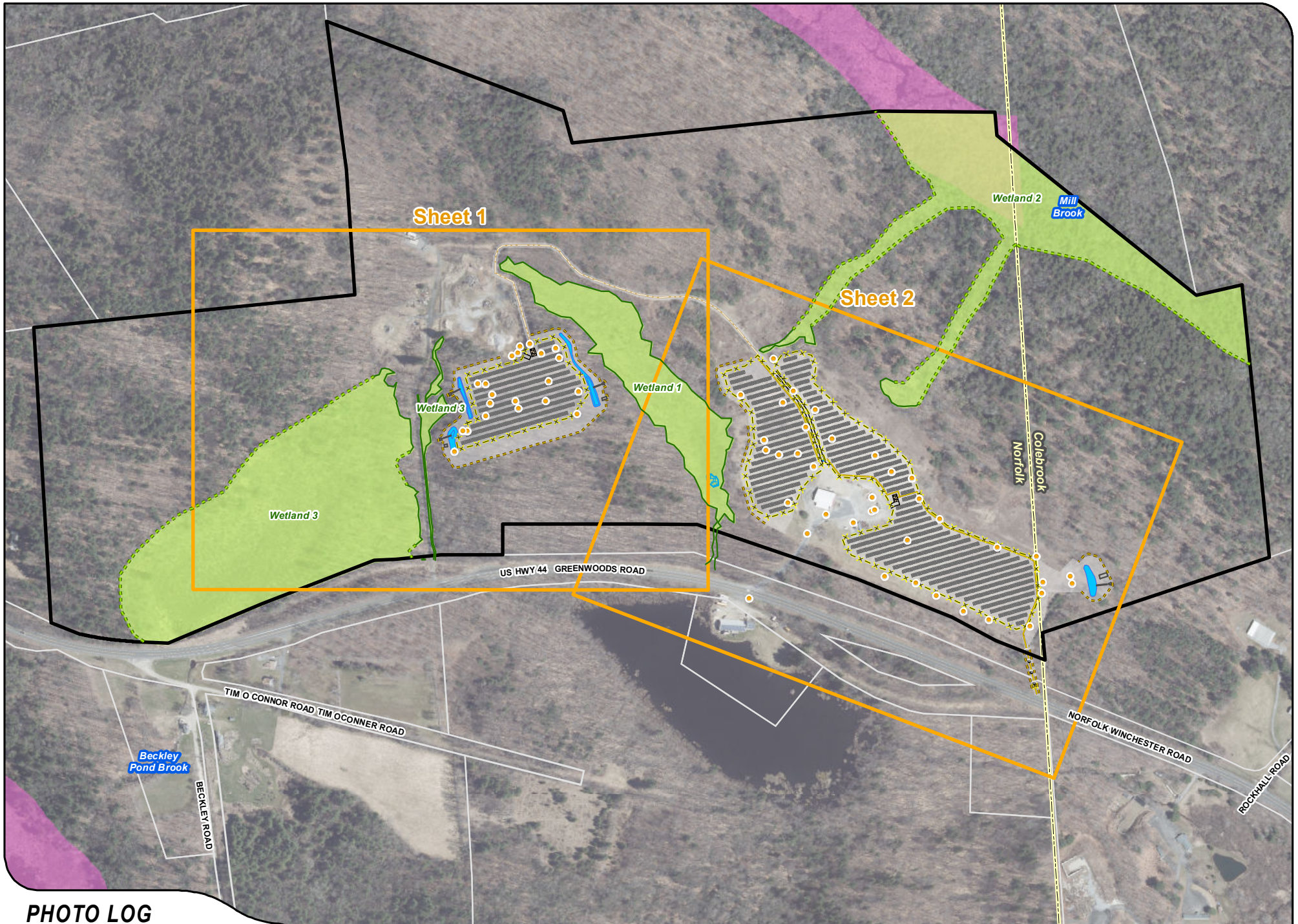


CT SITING COUNCIL PETITION NO. 1544  
RESPONSE TO INTERROGATORY #34  
NORFOLK SOLAR PROJECT  
599 GREENWOODS RD E  
NORFOLK, CONNECTICUT

PREPARED FOR:  
LSE PYXIS LLC

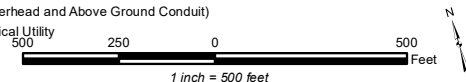


PREPARED BY:  
**ALL-POINTS TECHNOLOGY CORPORATION, P.C.**  
567 Vauxhall Street Extension – Suite 311  
Waterford, CT 06385



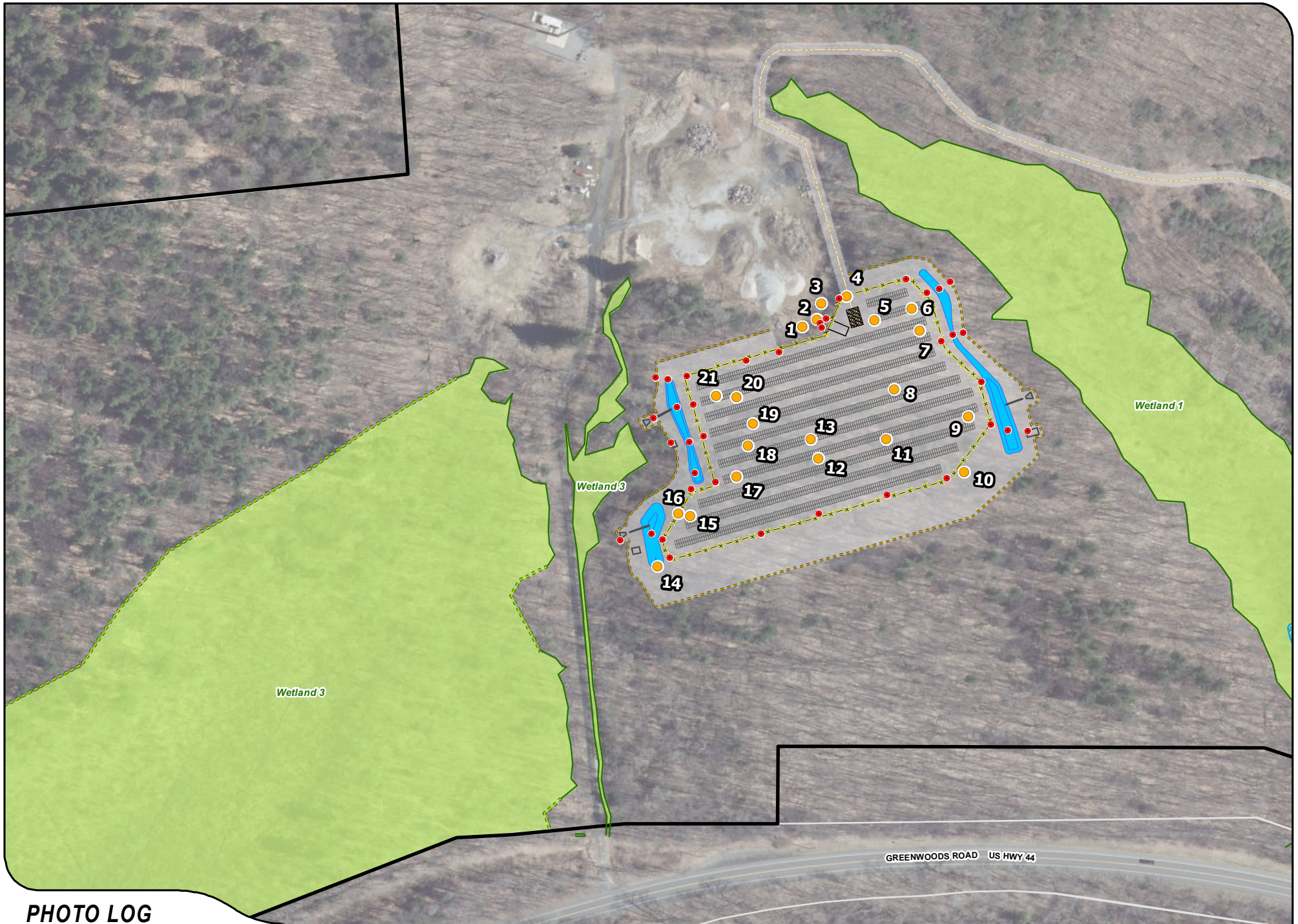
## PHOTO LOG

- |                         |                              |                      |                   |                    |  |
|-------------------------|------------------------------|----------------------|-------------------|--------------------|--|
| Photo Locations         | Delineated Wetland Boundary  | Municipal Boundary   | Access Drive      | Drainage Basin     | Electrical Utility (Overhead and Above Ground Conduit) |
| Site                    | Approximate Wetland Boundary | Limit of Disturbance | Fence             | Drainage Structure | Underground Electrical Utility                         |
| Approx. Parcel Boundary | Wetland Area                 | Solar Panels         | Proposed Treeline | Utility Pole       |  |
| Vernal Pool             | Concrete Equipment Pad       | Drainage Pipe        |                   |                    |  |



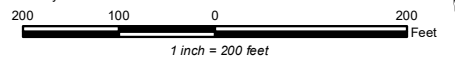
Proposed Solar Energy Facility  
599 Greenwood Road East  
Norfolk, Connecticut

Overall Map

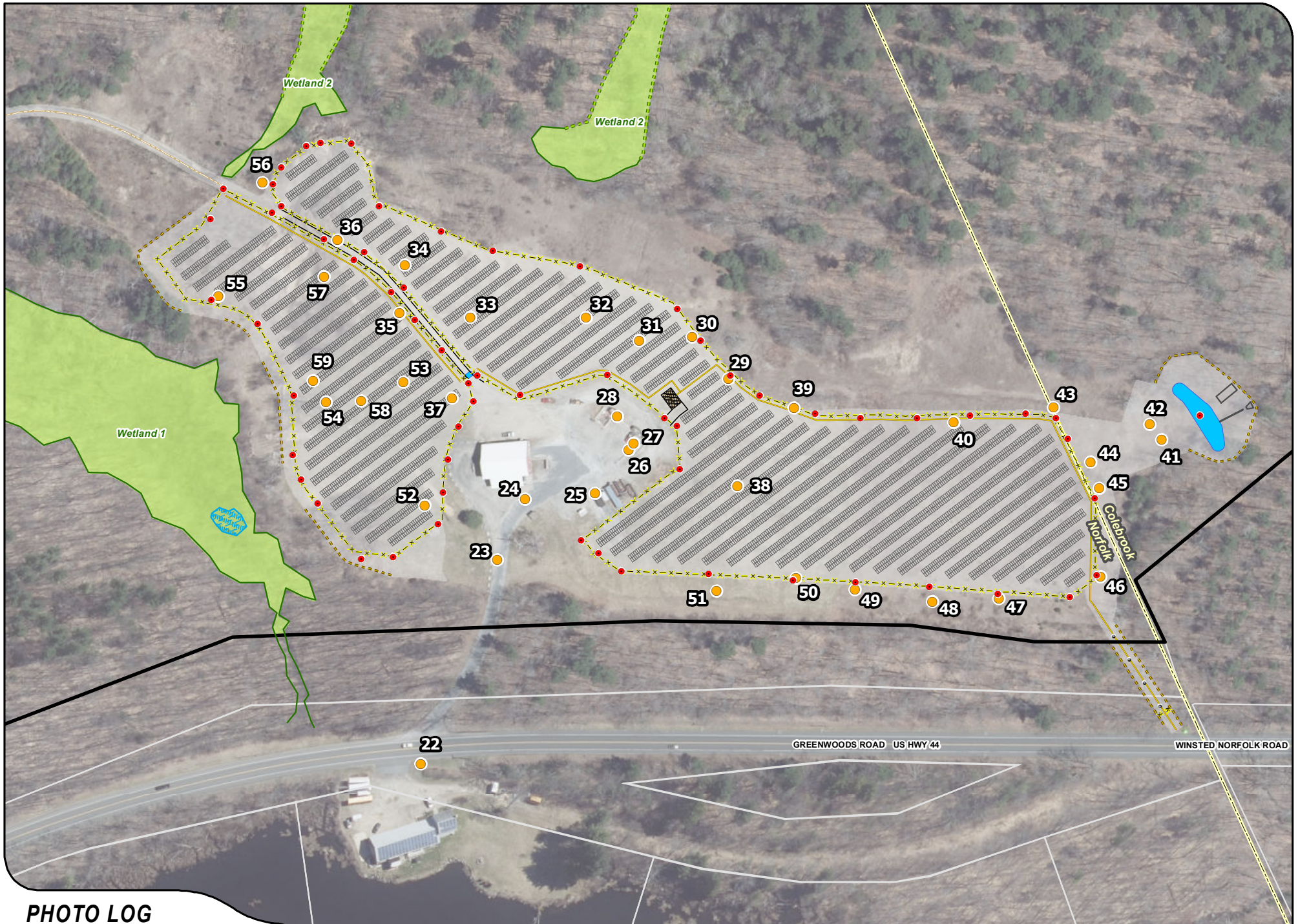


## PHOTO LOG

- |                         |                              |                        |                   |                    |  |
|-------------------------|------------------------------|------------------------|-------------------|--------------------|--|
| Photo Locations         | Delineated Wetland Boundary  | Municipal Boundary     | Access Drive      | Drainage Basin     | Electrical Utility (Overhead and Above Ground Conduit) |
| Photo Markers           | Approximate Wetland Boundary | Limit of Disturbance   | Fence             | Drainage Structure | Underground Electrical Utility                         |
| Site                    | Wetland Area                 | Solar Panels           | Proposed Treeline | Utility Pole       |  |
| Approx. Parcel Boundary | Vernal Pool                  | Concrete Equipment Pad | Drainage Pipe     |                    |  |

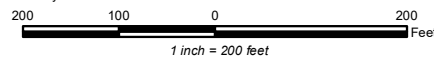


Proposed Solar Energy Facility  
599 Greenwood Road East  
Norfolk, Connecticut



## PHOTO LOG

- |                         |                              |                        |                   |                    |  |
|-------------------------|------------------------------|------------------------|-------------------|--------------------|--|
| Photo Locations         | Delineated Wetland Boundary  | Municipal Boundary     | Access Drive      | Drainage Basin     | Electrical Utility (Overhead and Above Ground Conduit) |
| Photo Markers           | Approximate Wetland Boundary | Limit of Disturbance   | Fence             | Drainage Structure | Underground Electrical Utility                         |
| Site                    | Wetland Area                 | Solar Panels           | Proposed Treeline | Utility Pole       |  |
| Approx. Parcel Boundary | Vernal Pool                  | Concrete Equipment Pad | Drainage Pipe     |                    |  |



Proposed Solar Energy Facility  
599 Greenwood Road East  
Norfolk, Connecticut



PHOTO

1

DESCRIPTION

LOOKING EAST



NORTH



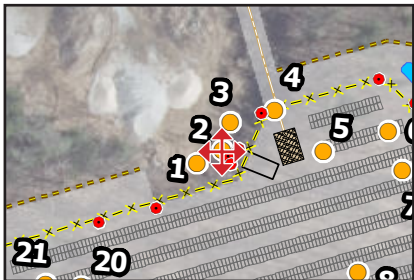
EAST



SOUTH



WEST



PHOTO

2

DESCRIPTION

VIEW FROM PROPOSED ACCESS GATE - FOUR CARDINAL POINTS

PHOTOGRAPHED ON 12/13/2022



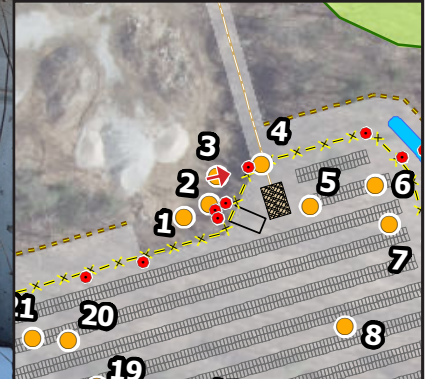
PROPOSED FENCELINE

PHOTO

3

DESCRIPTION

LOOKING EAST



PHOTOGRAPHED ON 1/17/2022



PROPOSED FENCELINE

PHOTO

4

DESCRIPTION

LOOKING EAST ALONG FENCELINE





**PROPOSED FENCELINE**

PHOTO

5A

DESCRIPTION

**LOOKING NORTHWEST TOWARDS ACCESS GATE**

PHOTOGRAPHED ON 12/13/2022



PHOTO

5B

DESCRIPTION

LOOKING NORTHEAST



PHOTOGRAPHED ON 12/13/2022

PHOTO

6

DESCRIPTION

LOOKING NORTHEAST



PHOTO

7

DESCRIPTION

VIEW FROM EXISTING STONE WALL LOOKING NORTHEAST



PHOTO

8

DESCRIPTION

VIEW LOOKING EAST



PHOTOGRAPHED ON 1/17/2022

PHOTO

8

DESCRIPTION

VIEW LOOKING SOUTHEAST



PHOTOGRAPHED ON 12/13/2022

PHOTO

9

DESCRIPTION

VIEW LOOKING SOUTHEAST



PHOTOGRAPHED ON 12/13/2022

PHOTO

10

DESCRIPTION

VIEW LOOKING SOUTHWEST





PHOTO

11

DESCRIPTION

VIEW LOOKING SOUTHEAST

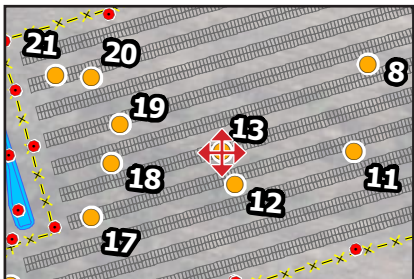


PHOTO

12

DESCRIPTION

VIEW LOOKING SOUTHEAST



PHOTO

13

DESCRIPTION

**CENTER OF COMPOUND - FOUR CARDINAL POINTS**

PHOTOGRAPHED ON 12/13/2022



PHOTO

DESCRIPTION

14

VIEW FROM PROPOSED DRAINAGE BASIN LOOKING NORTHEAST



PHOTO

15

DESCRIPTION

VIEW LOOKING NORTH



PHOTO

16

DESCRIPTION

VIEW LOOKING SOUTHWEST



PHOTO

17

DESCRIPTION

VIEW LOOKING NORTHWEST



PHOTO

18

DESCRIPTION

VIEW LOOKING SOUTHWEST





PROPOSED FENCELINE

PHOTO

19

DESCRIPTION

VIEW LOOKING NORTHEAST

PHOTOGRAPHED ON 12/13/2022



PHOTO

20

DESCRIPTION

VIEW LOOKING NORTHWEST



PHOTO

21

DESCRIPTION

VIEW LOOKING WEST



PHOTO

22

DESCRIPTION

VIEW FROM GREENWOODS ROAD EAST LOOKING NORTH

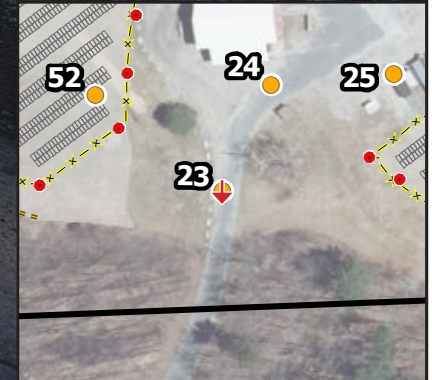


PHOTO

23

DESCRIPTION

VIEW LOOKING SOUTH



PHOTOGRAPHED ON 12/13/2022



PHOTO

24

DESCRIPTION

VIEW LOOKING NORTHEAST



PHOTO  
25A

DESCRIPTION  
VIEW LOOKING NORTHEAST

PHOTOGRAPHED ON 12/13/2022



PHOTO  
25B

DESCRIPTION  
VIEW LOOKING SOUTHWEST





PHOTO

26

DESCRIPTION

VIEW LOOKING NORTHWEST



PHOTO  
27A

DESCRIPTION  
VIEW LOOKING NORTHEAST



PHOTO  
27B

DESCRIPTION  
VIEW LOOKING NORTHEAST

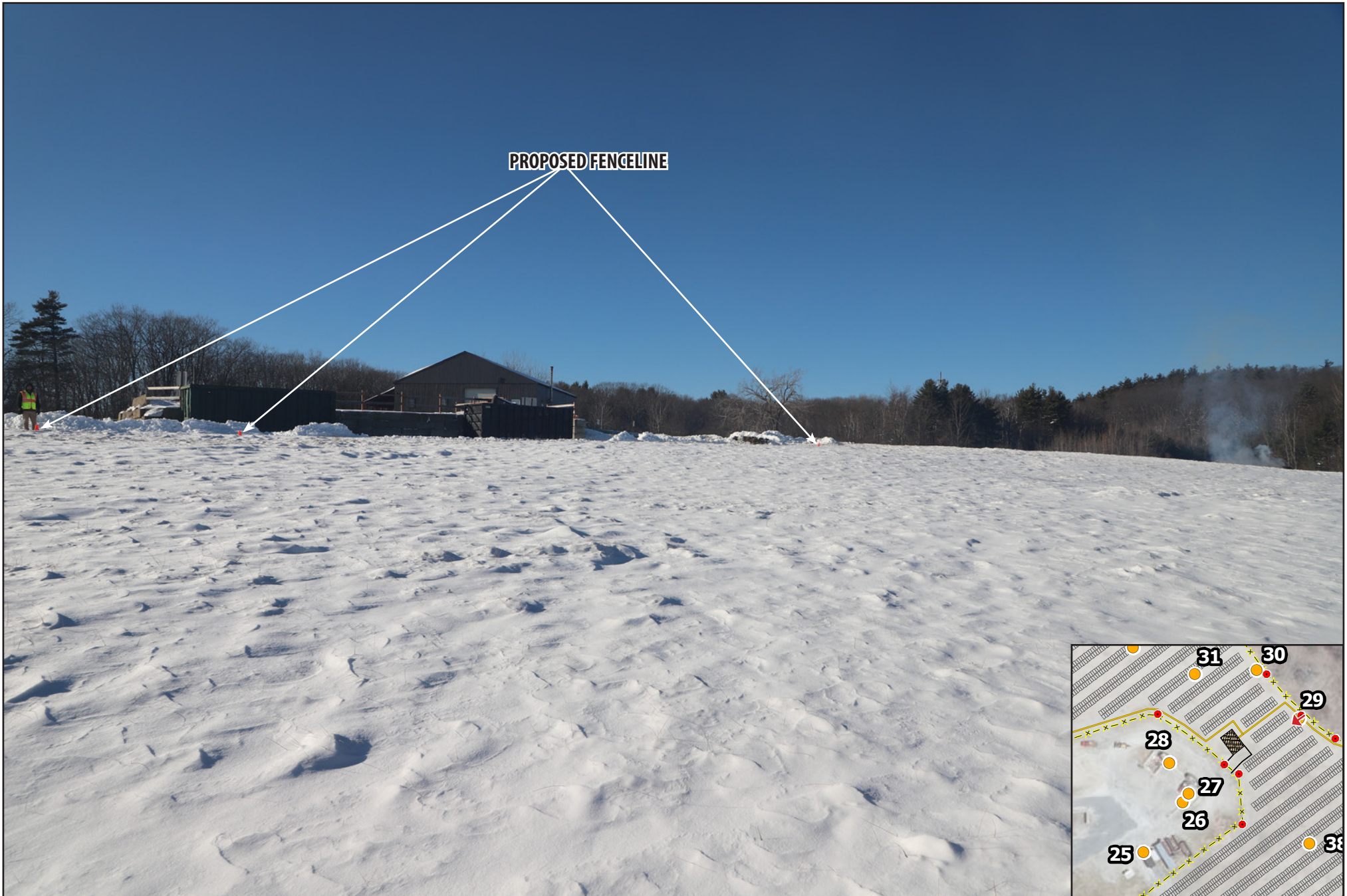


PHOTO

28

DESCRIPTION

VIEW LOOKING NORTHEAST



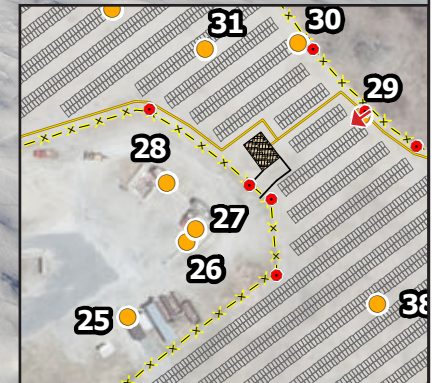
**PROPOSED FENCELINE**

PHOTO

29

DESCRIPTION

**VIEW LOOKING SOUTHWEST**



PHOTOGRAPHED ON 12/13/2022



**PROPOSED FENCELINE**

PHOTO

DESCRIPTION

**30**

**VIEW LOOKING SOUTHWEST**

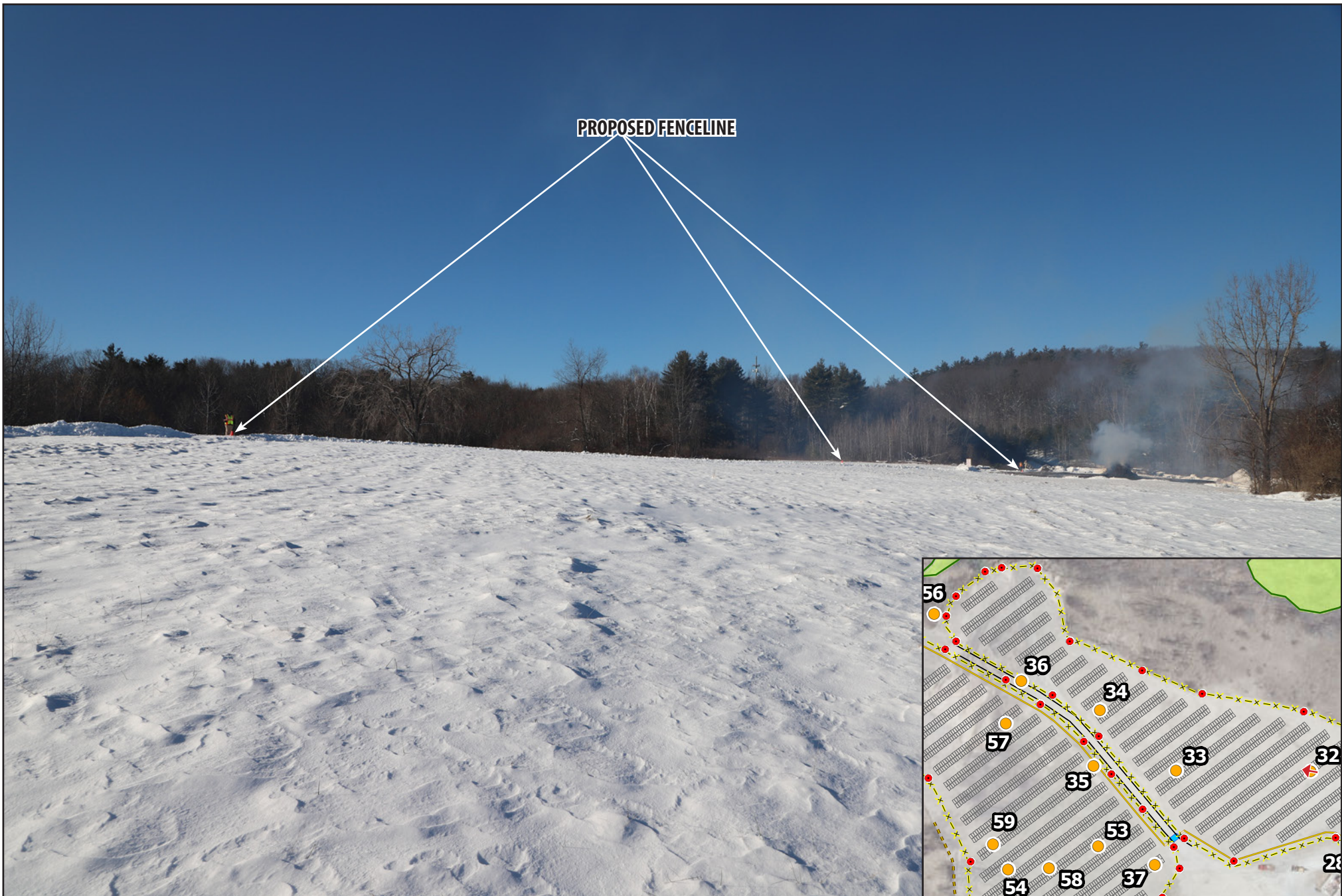


PHOTO

31

DESCRIPTION

VIEW LOOKING WEST



PHOTO

32

DESCRIPTION

**VIEW LOOKING WEST**





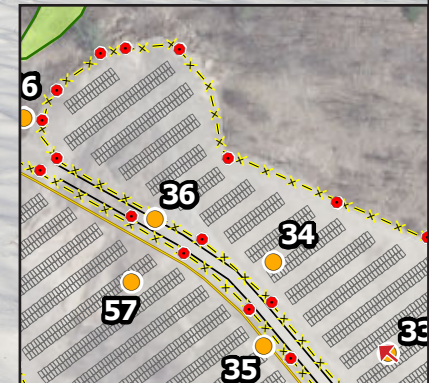
**PROPOSED FENCELINE**

PHOTO

33

DESCRIPTION

**VIEW LOOKING NORTHWEST**



PHOTOGRAPHED ON 12/13/2022



PHOTO

34

DESCRIPTION

VIEW LOOKING NORTHWEST



PHOTOGRAPHED ON 12/13/2022

PHOTO

35

DESCRIPTION

VIEW LOOKING NORTH

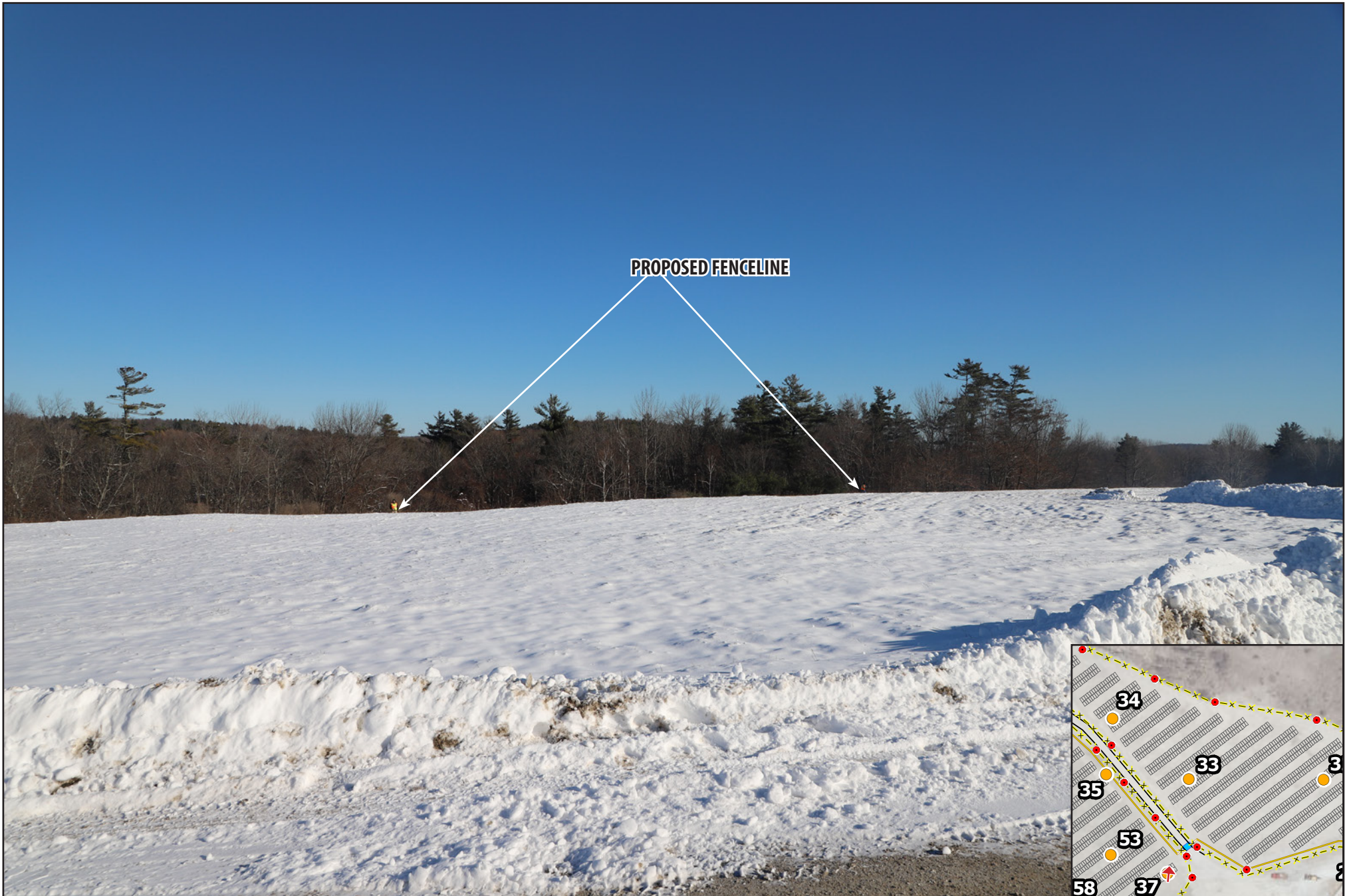


PHOTO

36

DESCRIPTION

VIEW LOOKING EAST



PHOTO

37

DESCRIPTION

VIEW LOOKING NORTH



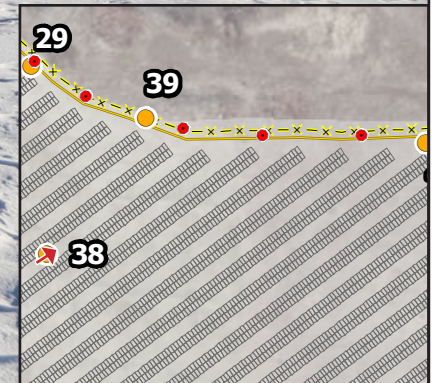
**PROPOSED FENCELINE**

PHOTO

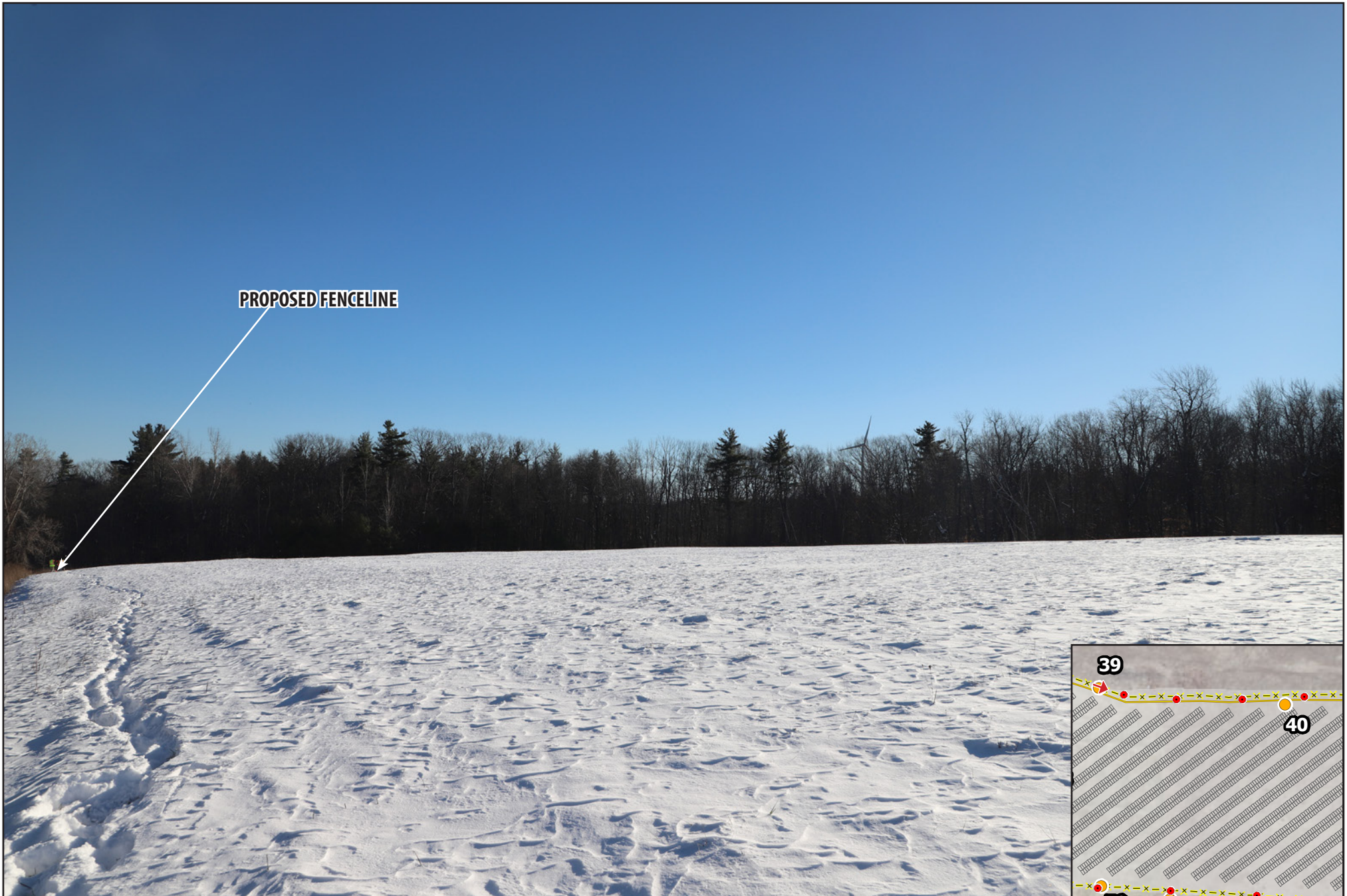
**38**

DESCRIPTION

**VIEW LOOKING NORTHEAST**



PHOTOGRAPHED ON 12/13/2022



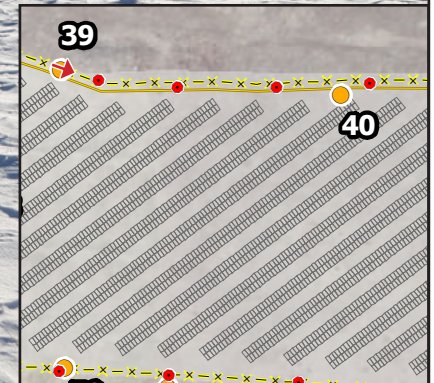
**PROPOSED FENCELINE**

PHOTO

**39**

DESCRIPTION

**VIEW LOOKING EAST**



PHOTOGRAPHED ON 12/12/2022



PHOTO

40

DESCRIPTION

VIEW LOOKING EAST



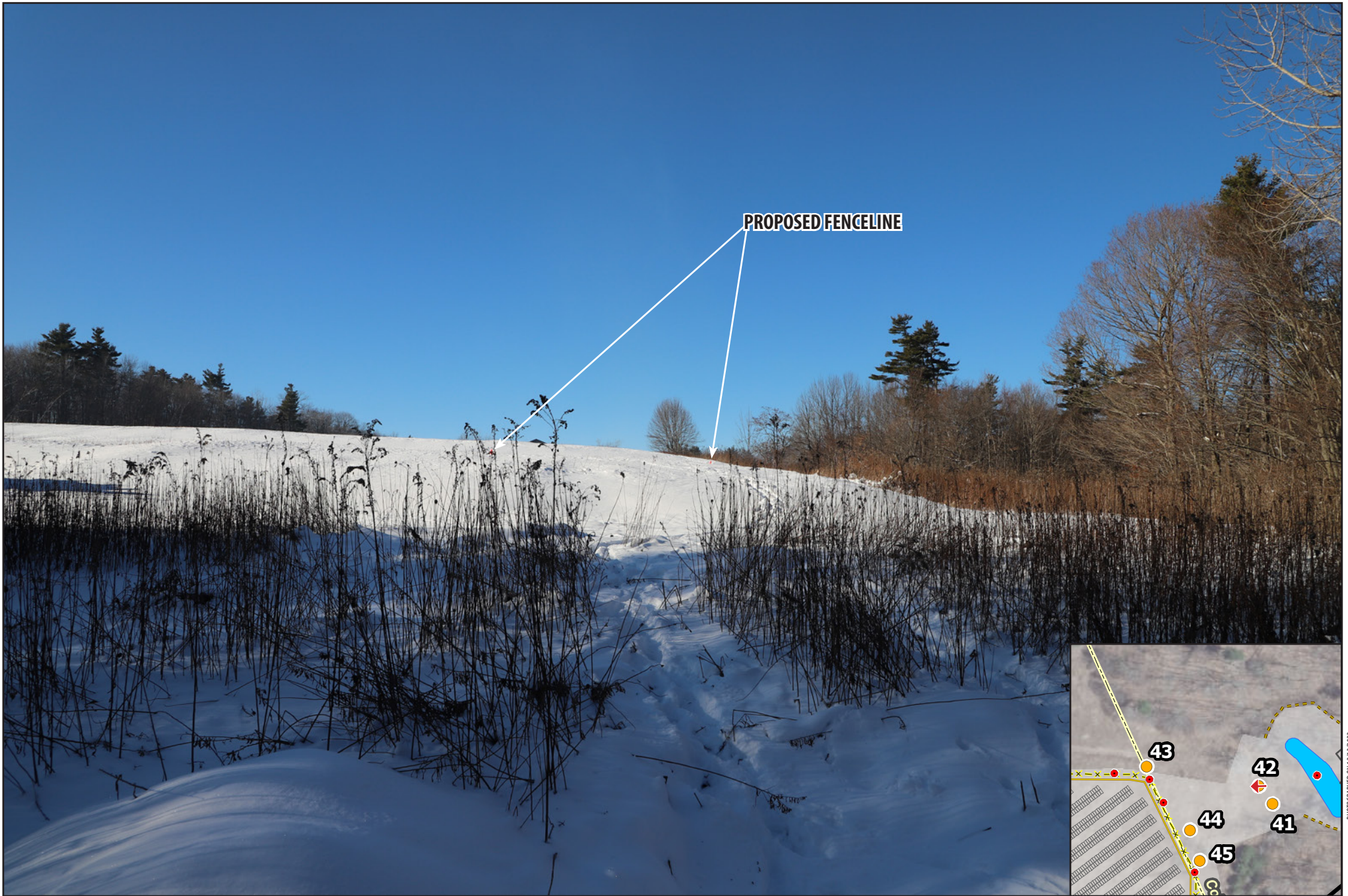


PHOTO

41

DESCRIPTION

VIEW LOOKING SOUTHEAST



PHOTO

42

DESCRIPTION

VIEW LOOKING WEST



**PROPOSED DRAINAGE BASIN**

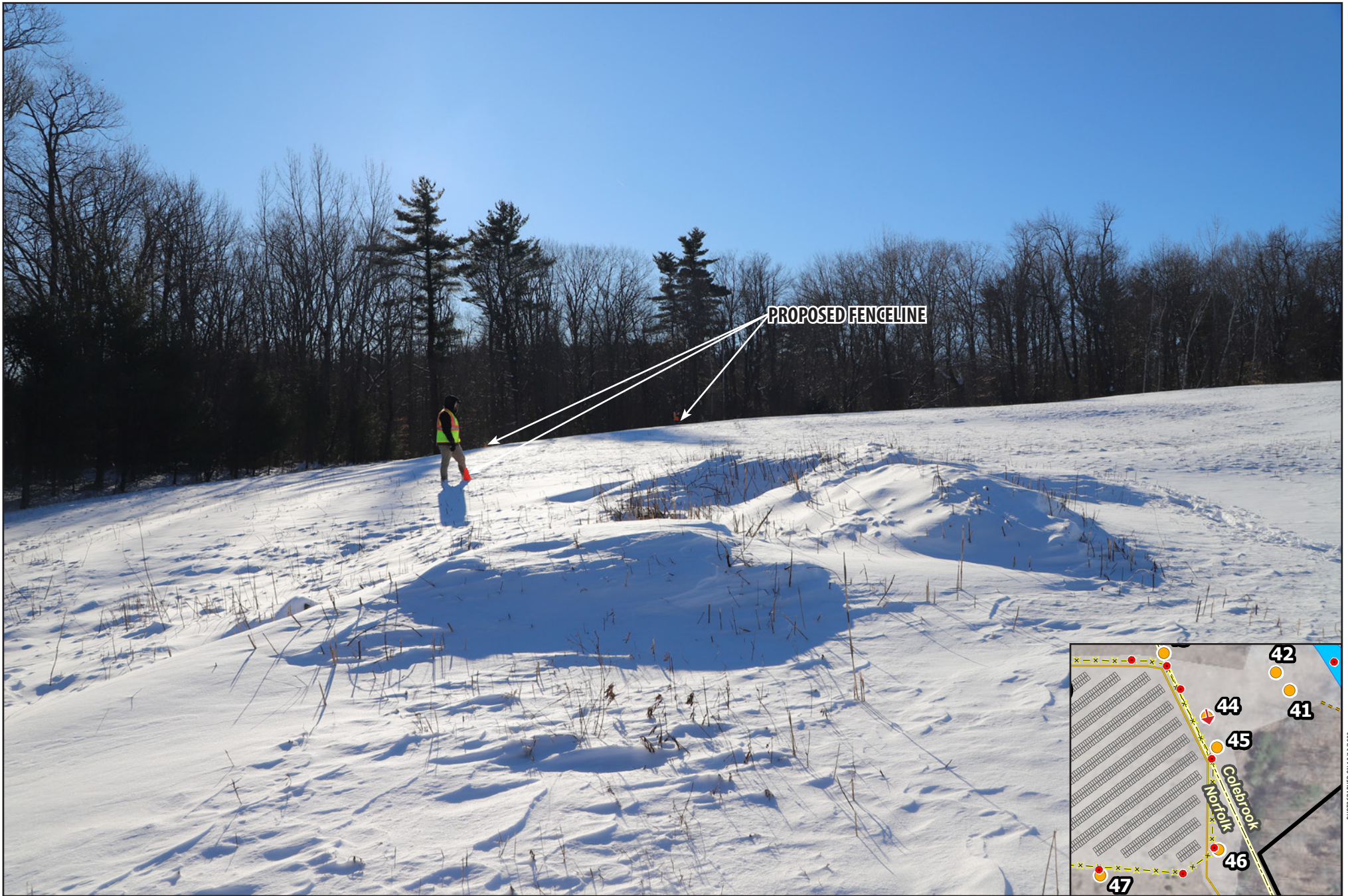
PHOTO

**43**

DESCRIPTION

**VIEW LOOKING NORTHEAST**

PHOTOGRAPHED ON 12/13/2022



PHOTO

44

DESCRIPTION

VIEW LOOKING SOUTH



**PROPOSED FENCELINE**

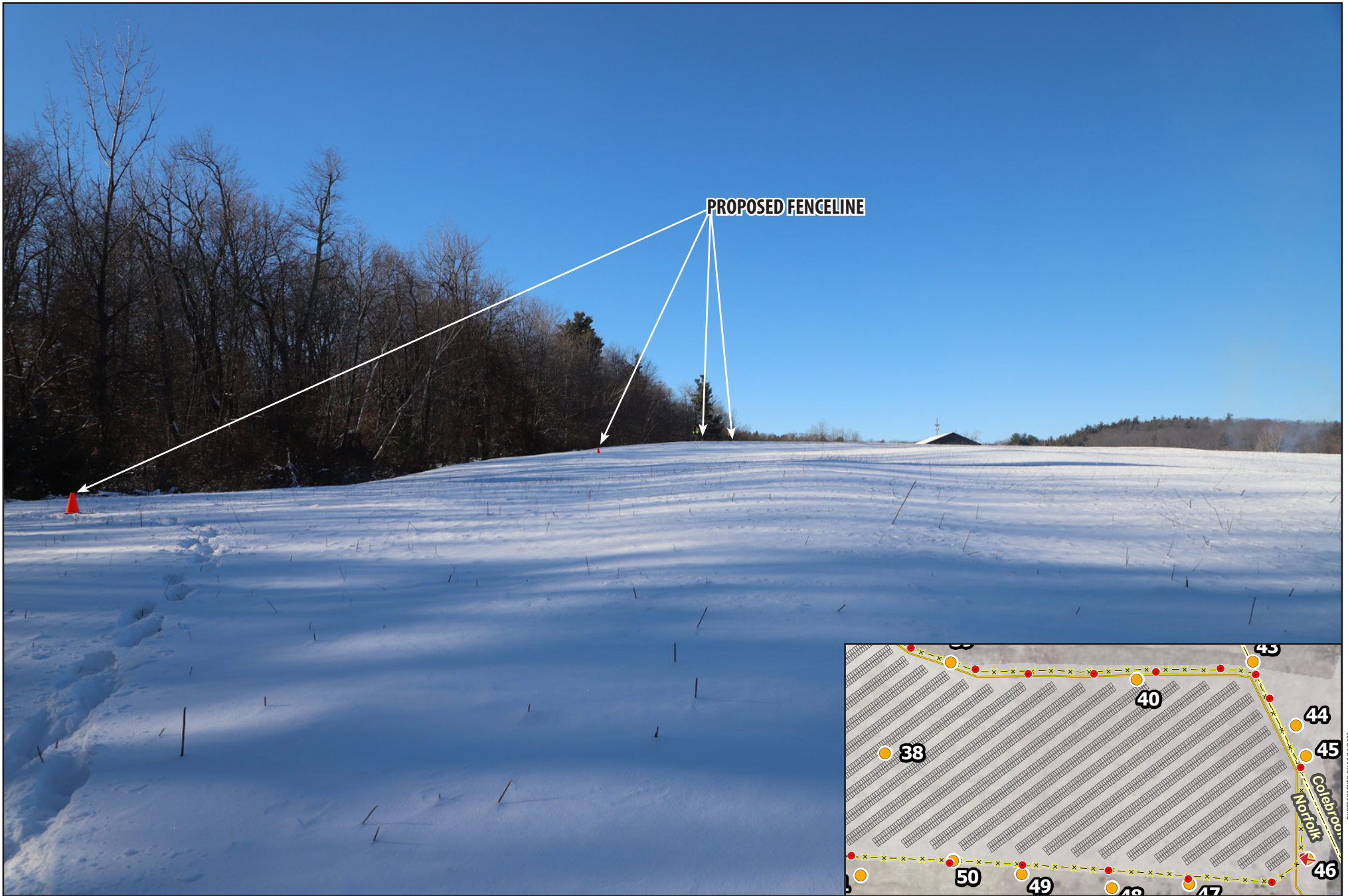
PHOTO

**45**

DESCRIPTION

**VIEW LOOKING SOUTH**

PHOTOGRAPHED ON 12/13/2022

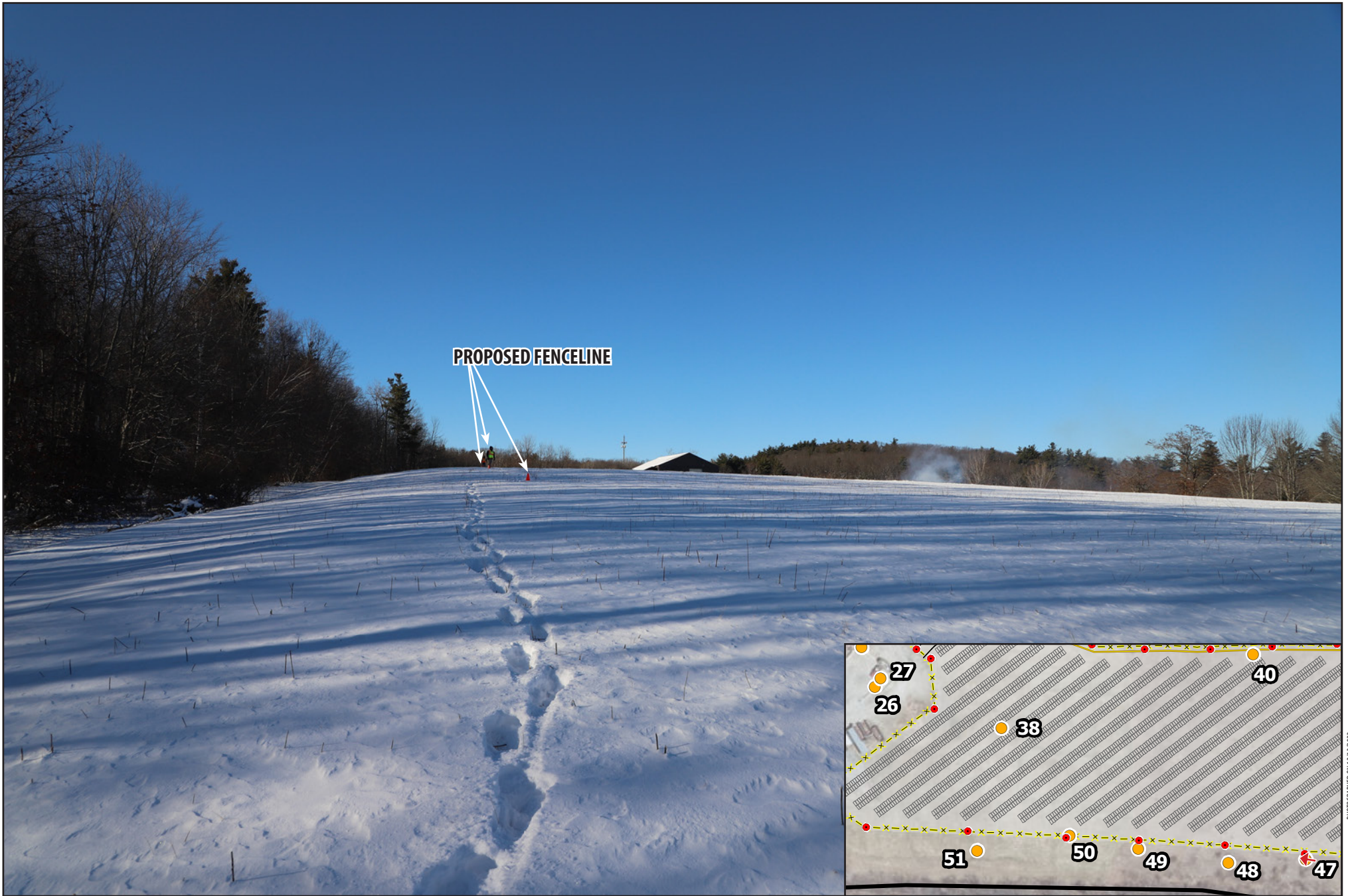


PHOTO

46

DESCRIPTION

VIEW LOOKING WEST

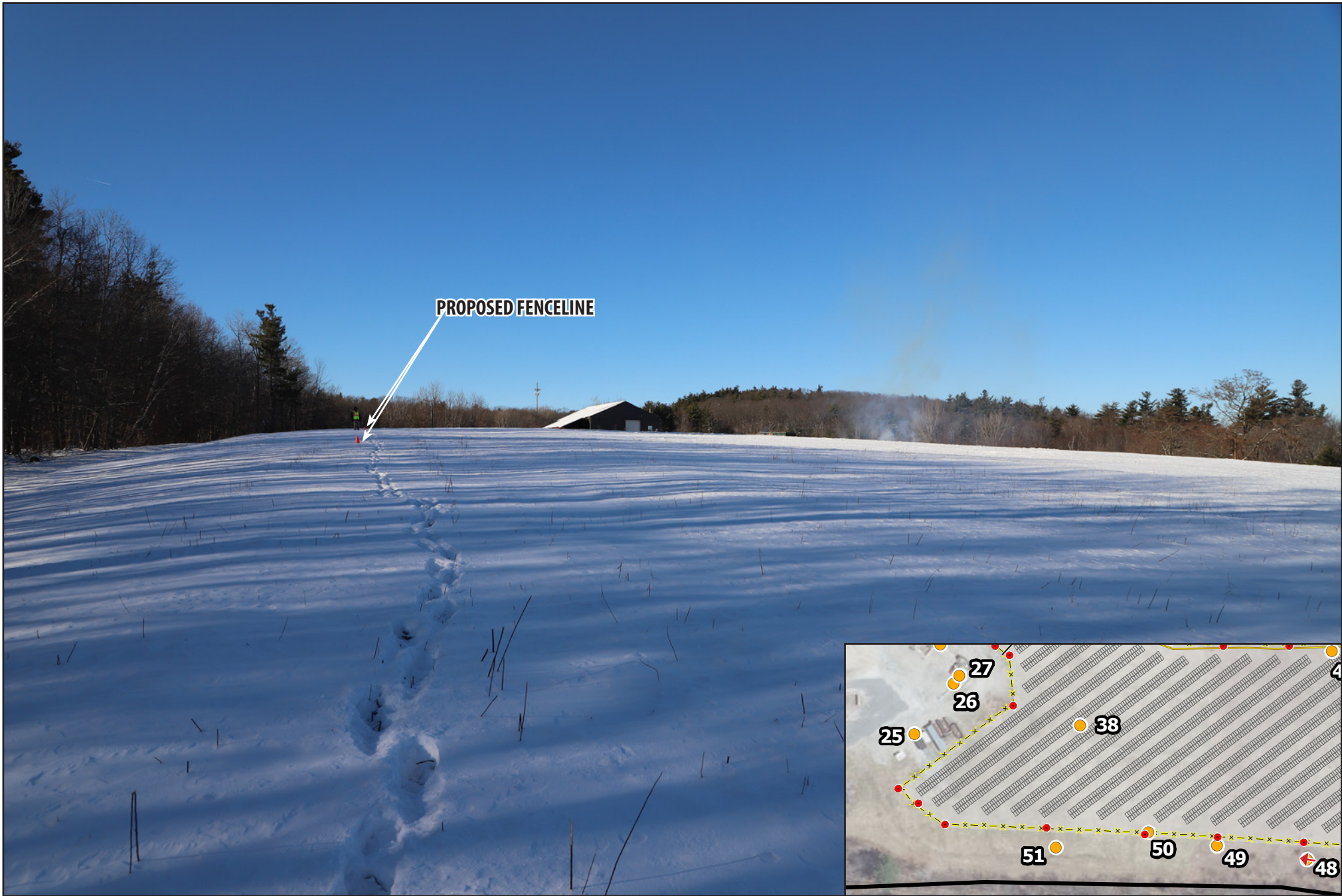


PHOTO

47

DESCRIPTION

VIEW LOOKING WEST



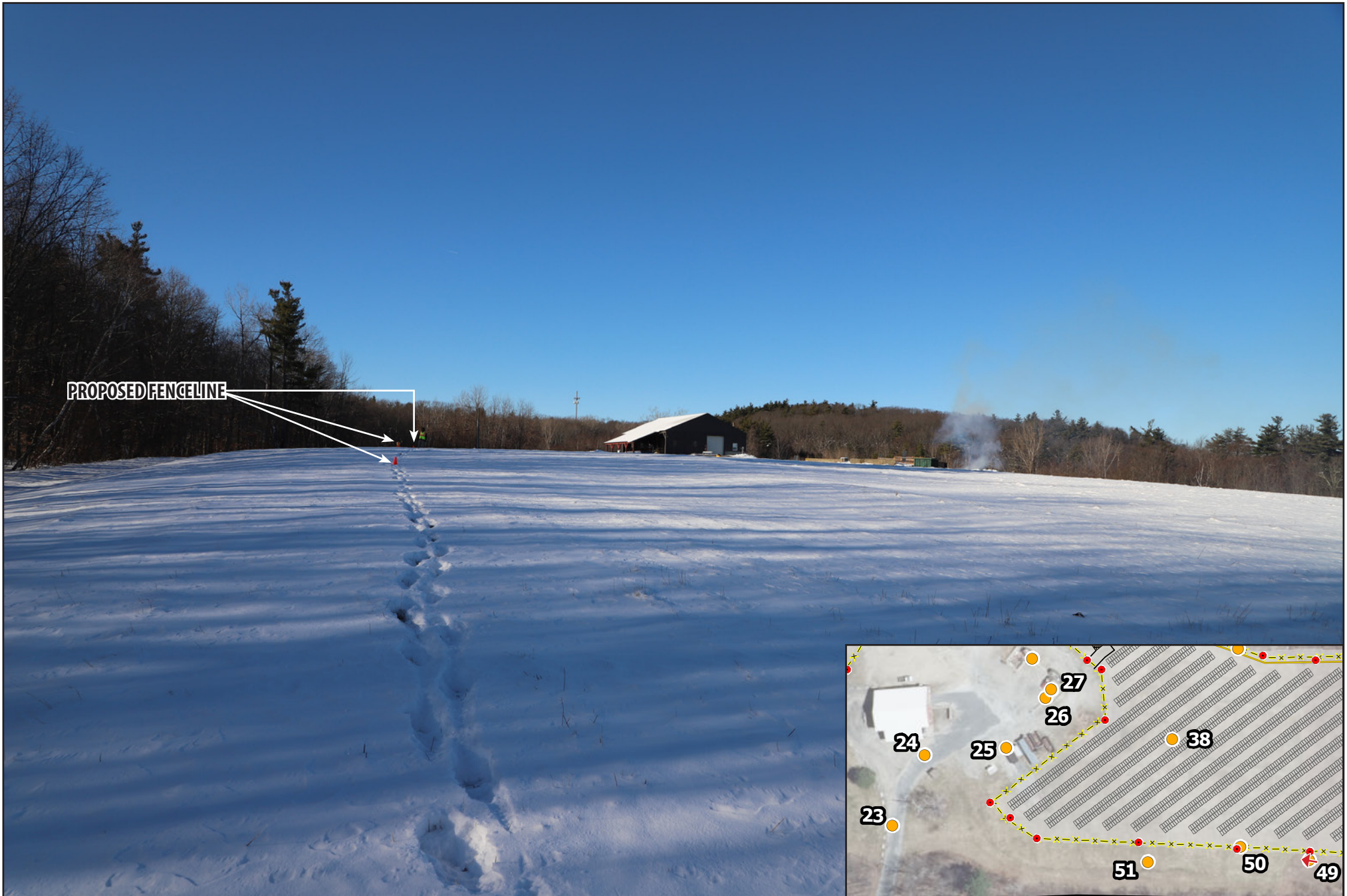
PHOTO

48

DESCRIPTION

VIEW LOOKING WEST





**PROPOSED FENCELINE**

PHOTO

49

DESCRIPTION

**VIEW LOOKING WEST**

PHOTOGRAPHED ON 12/13/2022



PROPOSED FENCELINE

PHOTO

50

DESCRIPTION

VIEW LOOKING WEST

PHOTOGRAPHED ON 1/17/2022



**PROPOSED FENCELINE**

PHOTO

51

DESCRIPTION

**VIEW LOOKING NORTHWEST**



PHOTO

52

DESCRIPTION

VIEW LOOKING NORTHWEST



PHOTO

53

DESCRIPTION

VIEW LOOKING NORTHWEST



PROPOSED FENCELINE

PHOTO

54

DESCRIPTION

VIEW LOOKING NORTHWEST



PHOTO

55

DESCRIPTION

VIEW LOOKING NORTHWEST



PHOTO

56

DESCRIPTION

VIEW LOOKING WEST

PHOTOGRAPHED ON 12/13/2022





PROPOSED FENCELINE

PHOTO

57

DESCRIPTION

VIEW LOOKING WEST

PHOTOGRAPHED ON 12/13/2022



**PROPOSED FENCELINE**

PHOTO

58

DESCRIPTION

**VIEW LOOKING NORTH**



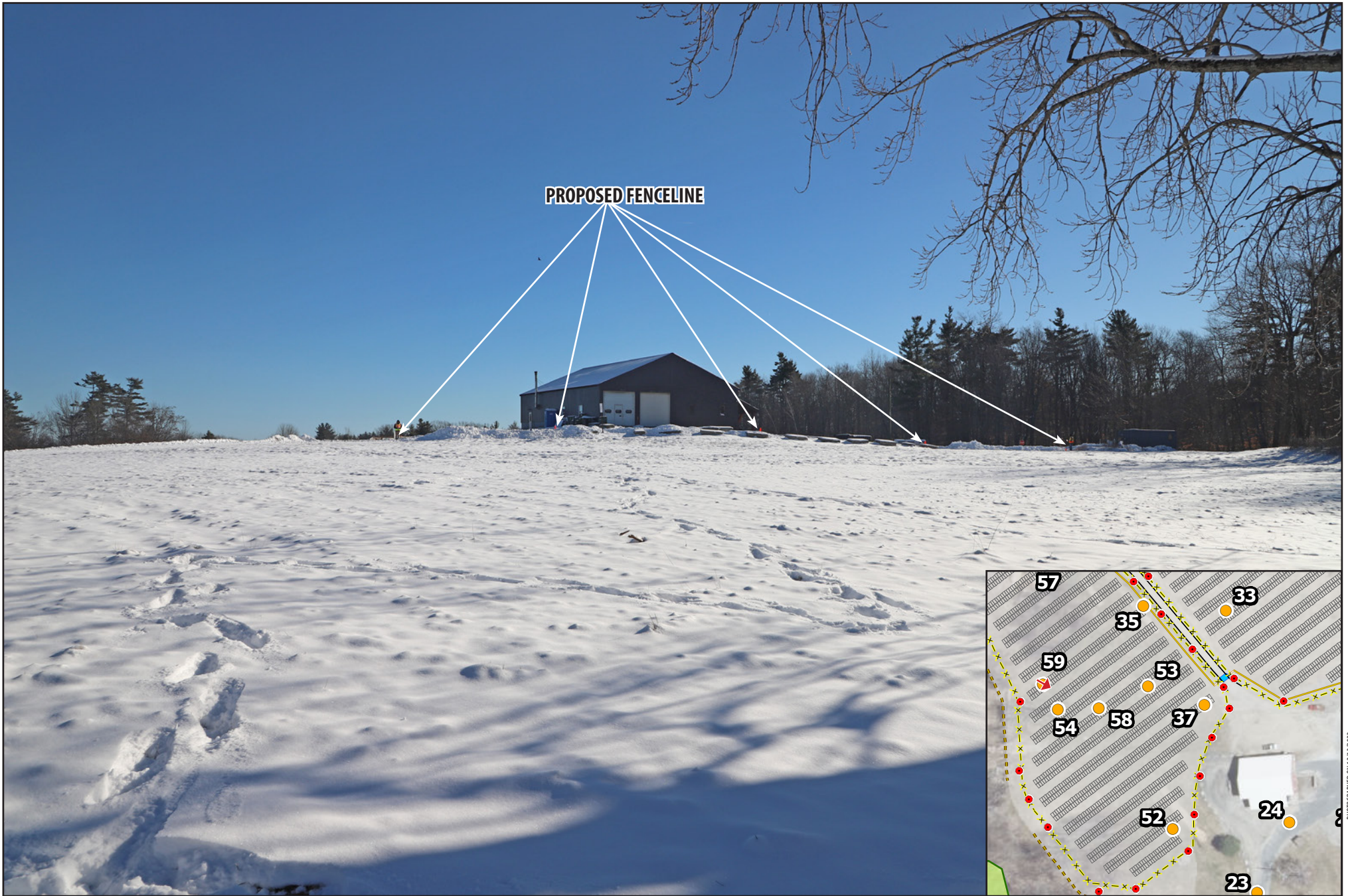
**PROPOSED FENCELINE**

PHOTO

**59A**

DESCRIPTION

**VIEW LOOKING NORTHEAST**



**PROPOSED FENCELINE**

PHOTO  
**59B**

DESCRIPTION  
**VIEW LOOKING SOUTHEAST**