

MicroDraft Technologies NH-A-055

N 200,000

N 200,000

N 198,000

N 198,000

(XX) ROUTE NUMBER (XX) (S) SCALED PARCEL DIMENSION
 (XX) STREET NUMBER (XX) ADJACENT MAP NUMBER

0 100 200 300 400 FEET

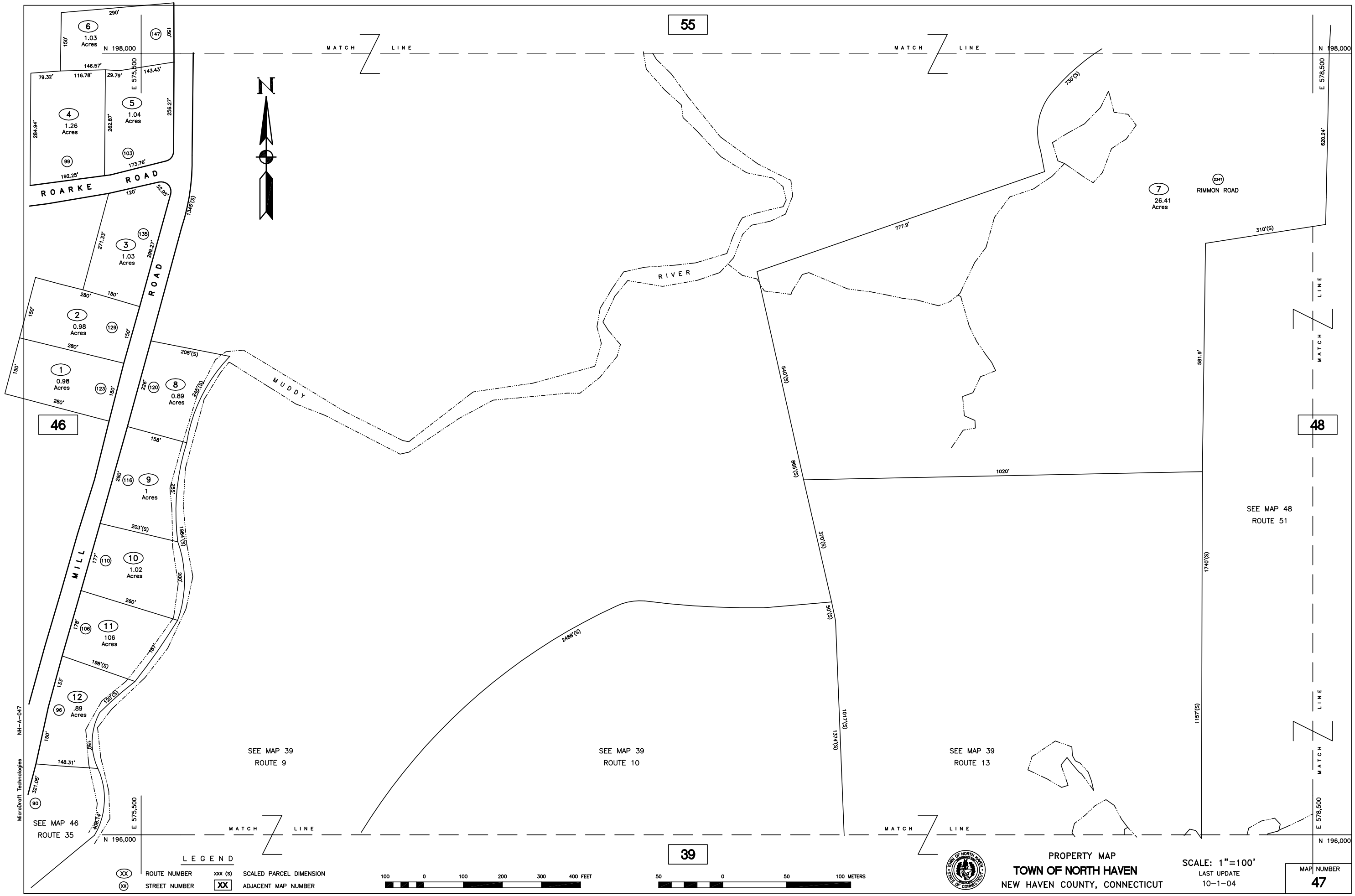
0 50 100 METERS



PROPERTY MAP
 TOWN OF NORTH HAVEN
 NEW HAVEN COUNTY, CONNECTICUT

SCALE: 1"=100'
 LAST UPDATE
 10-1-04

MAP NUMBER
55



55

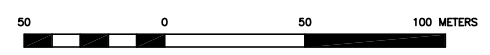
48

39



LEGEND

- (XX) ROUTE NUMBER xxx (s) SCALED PARCEL DIMENSION
- (XX) STREET NUMBER (XX) ADJACENT MAP NUMBER



PROPERTY MAP
TOWN OF NORTH HAVEN
 NEW HAVEN COUNTY, CONNECTICUT

SCALE: 1"=100'
 LAST UPDATE
 10-1-04

MAP NUMBER
47

MicroDraft Technologies NH-A-047

MATCH LINE

MATCH LINE

MATCH LINE

MATCH LINE

MATCH LINE

MATCH LINE

SEE MAP 48
 ROUTE 51

SEE MAP 39
 ROUTE 9

SEE MAP 39
 ROUTE 10

SEE MAP 39
 ROUTE 13

ROARKE ROAD

MILL ROAD

RIVER

MUDDY

RIMMON ROAD

46

6
 1.03 Acres
 N 198,000
 E 575,500
 146.57'
 116.78'
 29.79'
 143.43'
 284.94'
 282.87'
 103
 1.04 Acres
 256.27'
 173.76'
 192.25'
 99

3
 1.03 Acres
 271.33'
 292.27'
 150'
 280'
 150'
 120'
 1345(S)
 52.86'
 120'
 103

2
 0.98 Acres
 280'
 150'
 129

1
 0.98 Acres
 280'
 150'
 123

8
 0.89 Acres
 226'
 289(S)
 120

9
 1 Acres
 260'
 150'
 116

10
 1.02 Acres
 177'
 203(S)
 110

11
 106 Acres
 177'
 260'
 100

12
 .89 Acres
 133'
 198(S)
 96

7
 26.41 Acres

N 198,000
 E 575,500
 620.24'

MATCH LINE

MATCH LINE

MATCH LINE

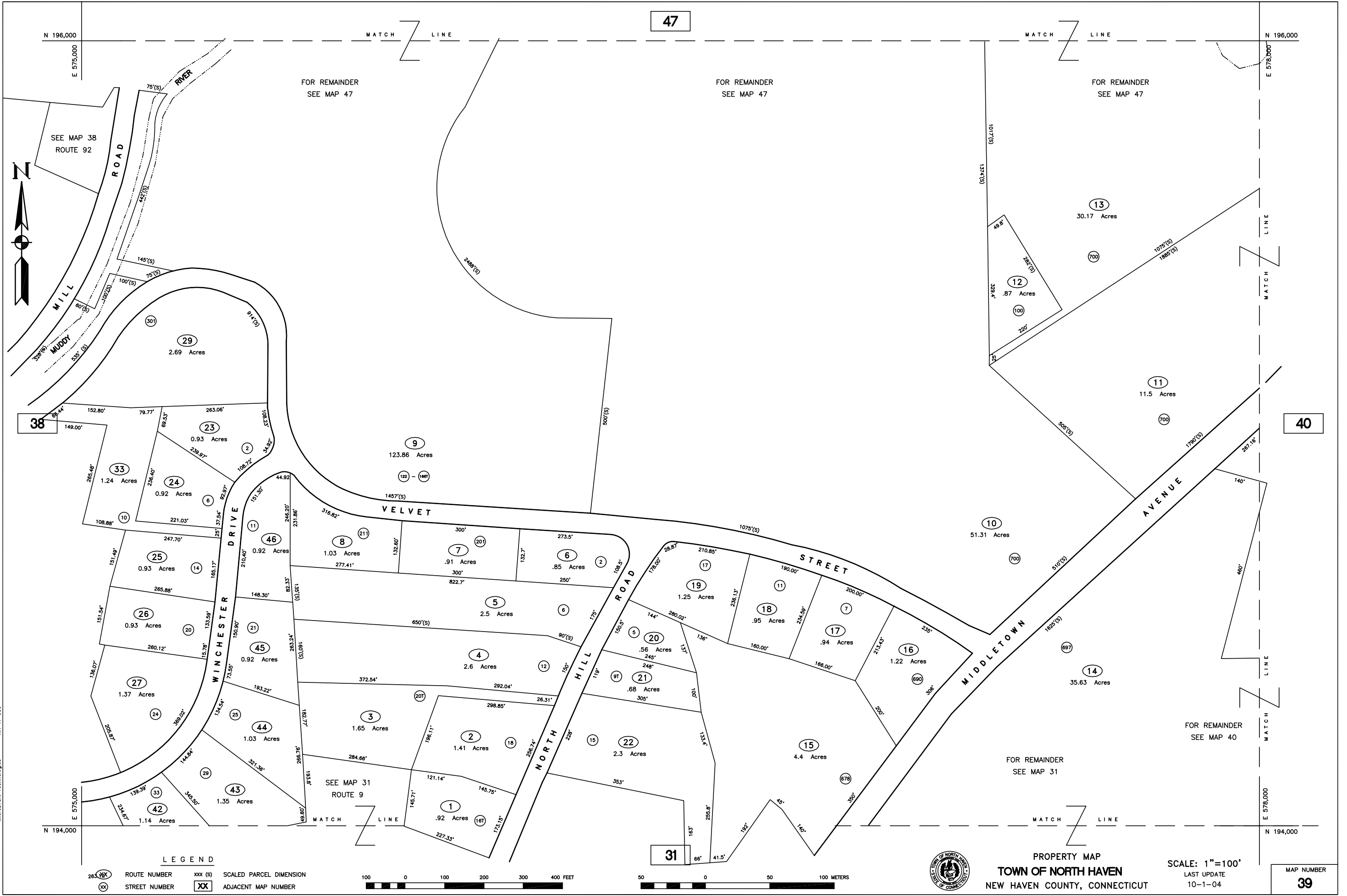
N 196,000
 E 578,500

47

40

31

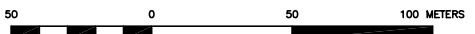
MAP NUMBER
39



N 196,000
E 575,000
MATCH LINE
FOR REMAINDER SEE MAP 47
FOR REMAINDER SEE MAP 47
FOR REMAINDER SEE MAP 47
MIDDLETOWN AVENUE
VELVET STREET
NORTH HILL ROAD
WINCHESTER DRIVE
MILL ROAD
MUDDY RIVER
SEE MAP 38 ROUTE 92
SEE MAP 31 ROUTE 9
FOR REMAINDER SEE MAP 40
FOR REMAINDER SEE MAP 31
N 194,000
E 575,000
MATCH LINE
MATCH LINE
MATCH LINE
MATCH LINE
MATCH LINE

LEGEND

- XX ROUTE NUMBER xxx (S) SCALED PARCEL DIMENSION
- XX STREET NUMBER XX ADJACENT MAP NUMBER



PROPERTY MAP
TOWN OF NORTH HAVEN
NEW HAVEN COUNTY, CONNECTICUT

SCALE: 1"=100'
LAST UPDATE
10-1-04

MicroDraft Technologies NH-A-039