



November 4, 2022

Melanie Bachman, Esq.  
Executive Director & Staff Attorney  
Connecticut Siting Council  
10 Franklin Square  
New Britain, CT 06051

**Re: Petition No. 1515  
Connecticut Green Banke Solar Project  
Manson Youth Correctional Institution  
42 Jarvis Street, Cheshire, CT**

Dear Attorney Bachman,

As you are aware, on August 18, 2022 the Connecticut Siting Council ruled that the proposal for the construction, maintenance, and operation of a 1.95-megawatt AC solar photovoltaic electric generating facility located at the Manson Youth Correctional Institution at 42 Jarvis Street in Cheshire, Connecticut would not have a substantial adverse environmental effect and would not require Certificate of Environmental Compatibility. This ruling was based on petition materials, including Site Plans prepared by J.R. Russo & Associates, LLC dated April 27, 2022, that called for the use of the Trinasolar's Duomax Twin Bifacial Dual Glass 252 Layout Module (470 Watt). Subsequent to the ruling, based on supply chain issues and availability, a new module has been selected as a substitute for the Trinasolar module. The substitute module is the CSI Solar BiHiKu6 CS6W Module (535 Watt). The specifications for this module are attached. In addition, the TCLP testing results for this module are attached. As shown, the TCLP test results indicate that no compounds were detected over the applicable limits for toxicity.

Based on differences in physical size and output, the switch to the CSI module required minor changes to the solar array layout in order to provide the same 1.95-megawatt AC output. Revised Site Plans reflecting these minor changes are also attached. As shown, the change to the more efficient CSI panel actually results in a decrease in the overall footprint of the proposed array from 6.69 acres to 6.17 acres. Thus, if anything, the environmental impacts are reduced as a result of the module substitution.

In accordance with condition 1 of the Siting Council Ruling, on behalf of the Connecticut Green Bank and CEFIA Holdings, LLC, I do hereby request approval of the module substitution as a minor modification. As stated above, the substitution results in a reduction of the area impacted by the solar development. If you have any questions or require further information, please feel free to contact me at (860) 623-0569 or [tcoon@jrusso.com](mailto:tcoon@jrusso.com).

Sincerely,

Timothy A. Coon, P.E.  
**J.R. Russo & Associates, LLC**

Enclosures

cc: Connecticut Green Bank

P.O. Box 938, East Windsor, CT 06088 [www.jrusso.com](http://www.jrusso.com) CT 860.623.0569 MA 413.785.1158

SERVING CONNECTICUT & MASSACHUSETTS

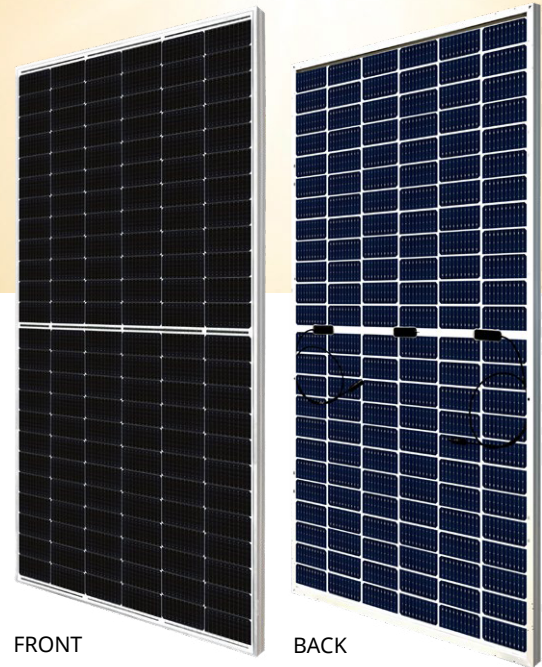


# BiHiKu6

520 W ~ 545 W

BIFACIAL MONO PERC

CS6W-520 | 525 | 530 | 535 | 540 | 545MB-AG



### MORE POWER



Module power up to 545 W  
Module efficiency up to 21.2 %



Up to 12.3 % lower LCOE  
Up to 5.2 % lower system cost



Comprehensive LID / LeTID mitigation technology, up to 50% lower degradation



Compatible with mainstream trackers, cost effective product for utility power plant



Better shading tolerance

### MORE RELIABLE



Minimizes micro-crack impacts



Heavy snow load up to 5400 Pa,  
wind load up to 2400 Pa\*



Enhanced Product Warranty on Materials and Workmanship\*



Linear Power Performance Warranty\*

1<sup>st</sup> year power degradation no more than 2%  
Subsequent annual power degradation no more than 0.45%

\*According to the applicable Canadian Solar Limited Warranty Statement.

### MANAGEMENT SYSTEM CERTIFICATES\*

ISO 9001:2015 / Quality management system  
ISO 14001:2015 / Standards for environmental management system  
ISO 45001: 2018 / International standards for occupational health & safety

### PRODUCT CERTIFICATES\*

IEC 61215 / IEC 61730 / CE / INMETRO / MCS / UKCA  
CEC listed (US California)  
UL 61730 / IEC 61701 / IEC 62716 / IEC 60068-2-68  
Take-e-way



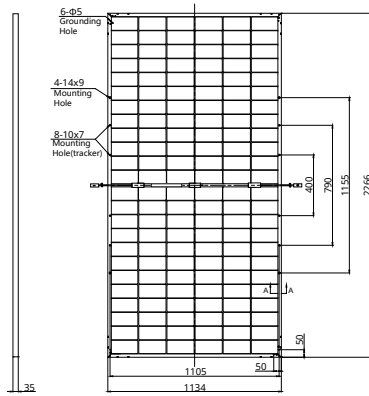
\* The specific certificates applicable to different module types and markets will vary, and therefore not all of the certifications listed herein will simultaneously apply to the products you order or use. Please contact your local Canadian Solar sales representative to confirm the specific certificates available for your Product and applicable in the regions in which the products will be used.

CSI SOLAR (USA) CO., LTD. is committed to providing high quality solar photovoltaic modules, solar energy and battery storage solutions to customers. The company was recognized as the No. 1 module supplier for quality and performance/price ratio in the IHS Module Customer Insight Survey. Over the past 20 years, it has successfully delivered over 63 GW of premium-quality solar modules across the world.

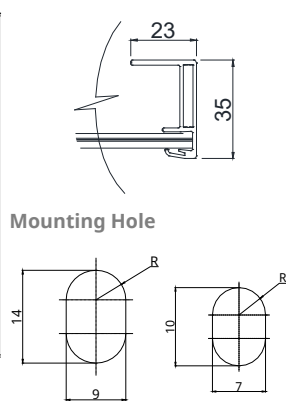
\* For detailed information, please refer to Installation Manual.

## ENGINEERING DRAWING (mm)

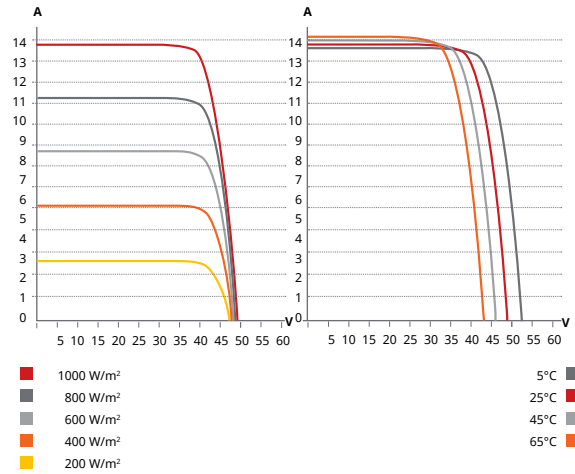
Rear View



Frame Cross Section A-A



## CS6W-530MB-AG / I-V CURVES



## ELECTRICAL DATA | STC\*

	Nominal Max. Power (Pmax)	Opt. Operating Voltage (Vmp)	Opt. Operating Current (Imp)	Open Circuit Voltage (Voc)	Short Circuit Current (Isc)	Module Efficiency
<b>CS6W-520MB-AG</b>	520 W	40.5 V	12.84 A	48.4 V	13.70 A	20.2%
<b>Bifacial Gain**</b>	5%	546 W	40.5 V	13.48 A	48.4 V	21.2%
	10%	572 W	40.5 V	14.12 A	48.4 V	22.3%
	20%	624 W	40.5 V	15.41 A	48.4 V	24.3%
<b>CS6W-525MB-AG</b>	525 W	40.7 V	12.90 A	48.6 V	13.75 A	20.4%
<b>Bifacial Gain**</b>	5%	551 W	40.7 V	13.55 A	48.6 V	21.4%
	10%	578 W	40.7 V	14.21 A	48.6 V	22.5%
	20%	630 W	40.7 V	15.48 A	48.6 V	24.5%
<b>CS6W-530MB-AG</b>	530 W	40.9 V	12.96 A	48.8 V	13.80 A	20.6%
<b>Bifacial Gain**</b>	5%	557 W	40.9 V	13.62 A	48.8 V	21.7%
	10%	583 W	40.9 V	14.26 A	48.8 V	22.7%
	20%	636 W	40.9 V	15.55 A	48.8 V	24.8%
<b>CS6W-535MB-AG</b>	535 W	41.1 V	13.02 A	49.0 V	13.85 A	20.8%
<b>Bifacial Gain**</b>	5%	562 W	41.1 V	13.68 A	49.0 V	21.9%
	10%	589 W	41.1 V	14.34 A	49.0 V	22.9%
	20%	642 W	41.1 V	15.62 A	49.0 V	25.0%
<b>CS6W-540MB-AG</b>	540 W	41.3 V	13.08 A	49.2 V	13.90 A	21.0%
<b>Bifacial Gain**</b>	5%	567 W	41.3 V	13.73 A	49.2 V	22.1%
	10%	594 W	41.3 V	14.39 A	49.2 V	23.1%
	20%	648 W	41.3 V	15.70 A	49.2 V	25.2%
<b>CS6W-545MB-AG</b>	545 W	41.5 V	13.14 A	49.4 V	13.95 A	21.2%
<b>Bifacial Gain**</b>	5%	572 W	41.5 V	13.80 A	49.4 V	22.3%
	10%	600 W	41.5 V	14.46 A	49.4 V	23.3%
	20%	654 W	41.5 V	15.77 A	49.4 V	25.5%

\* Under Standard Test Conditions (STC) of irradiance of 1000 W/m<sup>2</sup>, spectrum AM 1.5 and cell temperature of 25°C.

\*\* Bifacial Gain: The additional gain from the back side compared to the power of the front side at the standard test condition. It depends on mounting (structure, height, tilt angle etc.) and albedo of the ground.

## ELECTRICAL DATA

Operating Temperature	-40°C ~ +85°C
Max. System Voltage	1500 V (IEC/UL) or 1000 V (IEC/UL)
Module Fire Performance	TYPE 29 (UL 61730) or CLASS C (IEC61730)
Max. Series Fuse Rating	30 A
Application Classification	Class A
Power Tolerance	0 ~ + 10 W
Power Bifaciality*	70 %

\* Power Bifaciality =  $\frac{P_{max_{rear}}}{P_{max_{front}}}$  both  $P_{max_{rear}}$  and  $P_{max_{front}}$  are tested under STC, Bifaciality Tolerance:  $\pm 5\%$

\* The specifications and key features contained in this datasheet may deviate slightly from our actual products due to the on-going innovation and product enhancement. CSI Solar Co., Ltd. reserves the right to make necessary adjustment to the information described herein at any time without further notice.

Please be kindly advised that PV modules should be handled and installed by qualified people who have professional skills and please carefully read the safety and installation instructions before using our PV modules.

## ELECTRICAL DATA | NMOT\*

	Nominal Max. Power (Pmax)	Opt. Operating Voltage (Vmp)	Opt. Operating Current (Imp)	Open Circuit Voltage (Voc)	Short Circuit Current (Isc)
<b>CS6W-520MB-AG</b>	390 W	38.0 V	10.27 A	45.7 V	11.05 A
<b>CS6W-525MB-AG</b>	394 W	38.2 V	10.32 A	45.9 V	11.09 A
<b>CS6W-530MB-AG</b>	397 W	38.3 V	10.38 A	46.1 V	11.13 A
<b>CS6W-535MB-AG</b>	401 W	38.5 V	10.42 A	46.3 V	11.17 A
<b>CS6W-540MB-AG</b>	405 W	38.7 V	10.47 A	46.5 V	11.21 A
<b>CS6W-545MB-AG</b>	409 W	38.9 V	10.52 A	46.7 V	11.25 A

\* Under Nominal Module Operating Temperature (NMOT), irradiance of 800 W/m<sup>2</sup> spectrum AM 1.5, ambient temperature 20°C, wind speed 1 m/s.

## MECHANICAL DATA

Specification	Data
Cell Type	Mono-crystalline
Cell Arrangement	144 [2 x (12 x 6)]
Dimensions	2266 x 1134 x 35 mm (89.2 x 44.6 x 1.38 in)
Weight	32.2 kg (71.0 lbs)
Front Glass	2.0 mm heat strengthened glass with anti-reflective coating
Back Glass	2.0 mm heat strengthened glass
Frame	Anodized aluminium alloy
J-Box	IP68, 3 bypass diodes
Cable	4.0 mm <sup>2</sup> (IEC), 12 AWG (UL)
Cable Length (Including Connector)	410 mm (16.1 in) (+) / 290 mm (11.4 in) (-) (supply additional jumper cable: 2 lines / Pallet) or customized length*

Connector T4 or MC4 series

Per Pallet 30 pieces

Per Container (40' HQ) 600 pieces or 540 pieces (only for US)

\* For detailed information, please contact your local Canadian Solar sales and technical representatives.

## TEMPERATURE CHARACTERISTICS

Specification	Data
Temperature Coefficient (Pmax)	-0.34 % / °C
Temperature Coefficient (Voc)	-0.26 % / °C
Temperature Coefficient (Isc)	0.05 % / °C
Nominal Module Operating Temperature	41 $\pm$ 3°C

## PARTNER SECTION



# Test Report

REPORT No.: SHE20-15388/1      DATE RECEIVED: 2020/12/30  
 ATTENTION: -      ANALYSIS DATE : 2020/12/30~2021/01/25  
 CUSTOMER: CSI Solar Co.,Ltd      DATE REPORTED: 2021/01/27  
 199 Lushan Road,Suzhou New      SAMPLE (S): Solid waste (1)  
 District Jiangsu,China  
 REFERENCE: -

## REMARKS

- 1.The results apply to the sample(s) as received
- 2.The report is translated from SHE20-15388.

Edited by:   
 Min ZHOU

Reviewed by:   
 Jun MENG

Approved by:   
 Liqiong TANG





## Statement

1. The test report is invalid without the official seal of the laboratory.
2. This test report cannot be reproduced in any way, except in full content, without prior approval in writing by the laboratory.
3. The test report is invalid without the signature of the compiler, the checker and the approver
4. The test report is invalid if altered.
5. The test report has been drafted in Chinese and translated into English (if applicable) for convenience only. In the event of discrepancy, the Chinese version shall prevail.
6. Should you have any queries or objection to the test report, please contact us within 10 days after receiving the report.

### Legend

NA The sample was not analysed for this analyte

↑ Detection limit raised

↓ Detection limit lowered

ND Not Detected



## INORGANIC & ORGANIC ANALYSIS

Report No.: SHE20-15388/1

Customer Reference: -

Lab ID	SHE20-15388.001
Customer ID	PV Module CS6W-MB-AG
Model No.	1200999990042
Order No.	CP20-068432GZ
Date Received	2020/12/30

TCLP ITEM	METHOD	MDL	UNIT	Limit	Solid waste
Arsenic (As)	USEPA 200.8-1994	0.050	mg/L	≤5	<0.050
Barium (Ba)	USEPA 200.8-1994	0.010	mg/L	≤100	<b>0.058</b>
Cadmium (Cd)	USEPA 200.8-1994	0.001	mg/L	≤1	<0.001
Chromium (Cr)	USEPA 200.8-1994	0.010	mg/L	≤5	<0.010
Lead (Pb)	USEPA 200.8-1994	0.010	mg/L	≤5	<b>3.34</b>
Selenium (Se)	USEPA 200.8-1994	0.050	mg/L	≤1	<0.050
Silver (Ag)	USEPA 200.8-1994	0.010	mg/L	≤5	<0.010
Mercury (Hg)	USEPA 7473-2007	0.005	mg/L	≤0.2	<0.005
2,4-D	USEPA 8151A-1996	0.0005	mg/L	≤10	<0.0005
2,4,5-TP (Silvex, Fenopop)	USEPA 8151A-1996	0.0005	mg/L	≤1	<0.0005
Benzene	USEPA 8260D-2018	0.0005	mg/L	≤0.5	<0.0005
Carbon tetrachloride	USEPA 8260D-2018	0.0005	mg/L	≤0.5	<0.0005
Chlorobenzene	USEPA 8260D-2018	0.0005	mg/L	≤100	<0.0005
Chloroform	USEPA 8260D-2018	0.0005	mg/L	≤6	<0.0005
1,4-Dichlorobenzene	USEPA 8260D-2018	0.0005	mg/L	≤7.5	<0.0005
1,2-Dichloroethane	USEPA 8260D-2018	0.0005	mg/L	≤0.5	<0.0005
1,1-Dichloroethene	USEPA 8260D-2018	0.0005	mg/L	≤0.7	<0.0005
2-butanone(MEK)	USEPA 8260D-2018	0.020	mg/L	≤200	<0.020
Tetrachloroethene	USEPA 8260D-2018	0.0005	mg/L	≤0.7	<0.0005
Trichloroethene	USEPA 8260D-2018	0.0005	mg/L	≤0.5	<0.0005
Vinyl chloride	USEPA 8260D-2018	0.0005	mg/L	≤0.2	<0.0005
2,4-Dinitrotoluene	USEPA 8270E-2018	0.0005	mg/L	≤0.13	<0.0005
Hexachlorobenzene	USEPA 8270E-2018	0.0005	mg/L	≤0.13	<0.0005
Hexachlorobutadiene	USEPA 8270E-2018	0.0005	mg/L	≤0.5	<0.0005



## INORGANIC & ORGANIC ANALYSIS

Report No.: SHE20-15388/1

Customer Reference: -

Lab ID	SHE20-15388.001
Customer ID	PV Module CS6W-MB-AG
Model No.	1200999990042
Order No.	CP20-068432GZ
Date Received	2020/12/30

TCLP ITEM	METHOD	MDL	UNIT	Limit	Solid waste
Hexachloroethane	USEPA 8270E-2018	0.0005	mg/L	≤3	<0.0005
Nitrobenzene	USEPA 8270E-2018	0.0005	mg/L	≤2	<0.0005
Pentachlorophenol	USEPA 8270E-2018	0.0025	mg/L	≤100	<0.0025
Pyridine	USEPA 8270E-2018	0.002	mg/L	≤5.0	<0.002
2,4,5-Trichlorophenol	USEPA 8270E-2018	0.0005	mg/L	≤400	<0.0005
2,4,6-Trichlorophenol	USEPA 8270E-2018	0.0005	mg/L	≤2	<0.0005
Methylphenol	USEPA 8270E-2018	0.001	mg/L	≤200	<0.001
2-Methylphenol	USEPA 8270E-2018	0.0005	mg/L	≤200	<0.0005
3&4-Methylphenol	USEPA 8270E-2018	0.0005	mg/L	≤200	<0.0005
Endrin	USEPA 8270E-2018	0.0005	mg/L	≤0.02	<0.0005
γ-BHC	USEPA 8270E-2018	0.0005	mg/L	≤0.4	<0.0005
Toxaphene	USEPA 8270E-2018	0.050	mg/L	≤0.5	<0.050
Methoxychlor	USEPA 8270E-2018	0.0005	mg/L	≤10	<0.0005
Heptachlor	USEPA 8270E-2018	0.0005	mg/L	≤0.008	<0.0005
Chlordane(Total)	USEPA 8270E-2018	0.001	mg/L	≤0.03	<0.001

Remark:

- 1.Preparative method:USEPA1311-1992(Toxicity Characteristic Leaching Procedure)
- 2.The Limits comes from CFR(code of federal regulations) title 40 part 261.24.



## Method List

USEPA 200.8-1994 Metals ICP-MS  
 USEPA 7473-2007 Metals-Hg  
 USEPA 8151A-1996 Acid Herbicides in Water by GC-MS  
 USEPA 8260D-2018 VOCs  
 USEPA 8270E-2018 SVOCs

## Equipment Information

### Method:USEPA 200.8-1994

Equipment Name	Model	Equipment Number	Serial Number
ICP-MS	Agilent 7900	CHEM-998	JP16311502

### Method:USEPA 7473-2007

Equipment Name	Model	Equipment Number	Serial Number
Hg analyzer	Milestone DMA-80	CHEM-958	16041979

### Method:USEPA 8151A-1996

Equipment Name	Model	Equipment Number	Serial Number
GC-MS	Agilent 7890A/5975C	CHEM-ENV085	CN12371032/US12362A17

### Method:USEPA 8260D-2018

Equipment Name	Model	Equipment Number	Serial Number
PT-GC-MS	Atomx&Agilent7890B/5977B	CHEM-1035	US17062008/CN17103162/US1711M006

### Method:USEPA 8270E-2018

Equipment Name	Model	Equipment Number	Serial Number
GC-MS	Agilent 7890B/5977A	CHEM-1118	CN18053182/US1805M023

### Method:USEPA 8270E-2018

Equipment Name	Model	Equipment Number	Serial Number
GC-MS	Agilent 7890B/5977A	CHEM-1118	CN18053182/US1805M023



Unless otherwise agreed in writing, this document is issued by the Company subject to its General Conditions of Service printed overleaf, available on request or accessible at <http://www.sgs.com/en/Terms-and-Conditions.aspx> and, for electronic format documents, subject to Terms and Conditions for Electronic Documents at <http://www.sgs.com/en/Terms-and-Conditions/Terms-e-Document.aspx>. Attention is drawn to the limitation of liability, indemnification and jurisdiction issues defined therein. Any holder of this document is advised that information contained hereon reflects the Company's findings at the time of its intervention only and within the limits of Client's instructions, if any. The Company's sole responsibility is to its Client and this document does not exonerate parties to a transaction from exercising all their rights and obligations under the transaction documents. This document cannot be reproduced except in full, without prior written approval of the Company. Any unauthorized alteration, forgery or falsification of the content or appearance of this document is unlawful and offenders may be prosecuted to the fullest extent of the law. Unless otherwise stated the results shown in this test report refer only to the sample(s) tested and such sample(s) are retained for 30 days only.

Attention: To check the authenticity of testing /inspection report & certificate, please contact us at telephone: (86-755) 8307 1443, or email: [CN.Deccheck@sgs.com](mailto:CN.Deccheck@sgs.com)  
 3<sup>rd</sup> Building, No.889 Yishan Road, Xuhui District, Shanghai, China 200233 t (86-21) 61072828 f (86-21) 61152164 www.sgs.com.cn  
 中国·上海·徐汇区宜山路889号3号楼 邮编: 200233 t (86-21) 61072828 f (86-21) 61152164 e [sgs.china@sgs.com](mailto:sgs.china@sgs.com)



## APPENDIX 1

Report No.:SHE20-15388/1

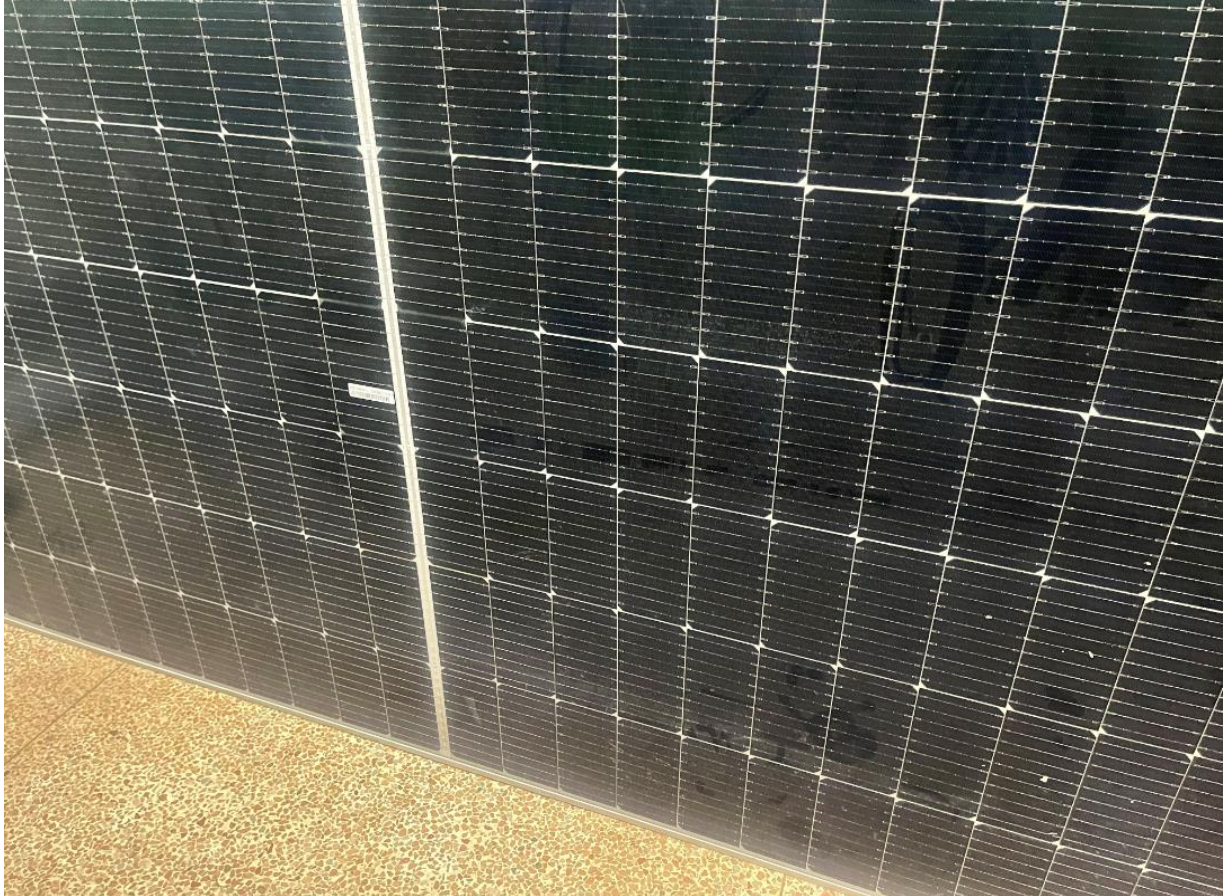
Customer Reference: -



## APPENDIX 2

Report No.:SHE20-15388/1

Customer Reference: -



\*\*\*End of report\*\*\*

Page 7 of 7



Unless otherwise agreed in writing, this document is issued by the Company subject to its General Conditions of Service printed overleaf, available on request or accessible at <http://www.sgs.com/en/Terms-and-Conditions.aspx> and, for electronic format documents, subject to Terms and Conditions for Electronic Documents at <http://www.sgs.com/en/Terms-and-Conditions/Terms-e-Document.aspx>. Attention is drawn to the limitation of liability, indemnification and jurisdiction issues defined therein. Any holder of this document is advised that information contained hereon reflects the Company's findings at the time of its intervention only and within the limits of Client's instructions, if any. The Company's sole responsibility is to its Client and this document does not exonerate parties to a transaction from exercising all their rights and obligations under the transaction documents. This document cannot be reproduced except in full, without prior written approval of the Company. Any unauthorized alteration, forgery or falsification of the content or appearance of this document is unlawful and offenders may be prosecuted to the fullest extent of the law. Unless otherwise stated the results shown in this test report refer only to the sample(s) tested and such sample(s) are retained for 30 days only.

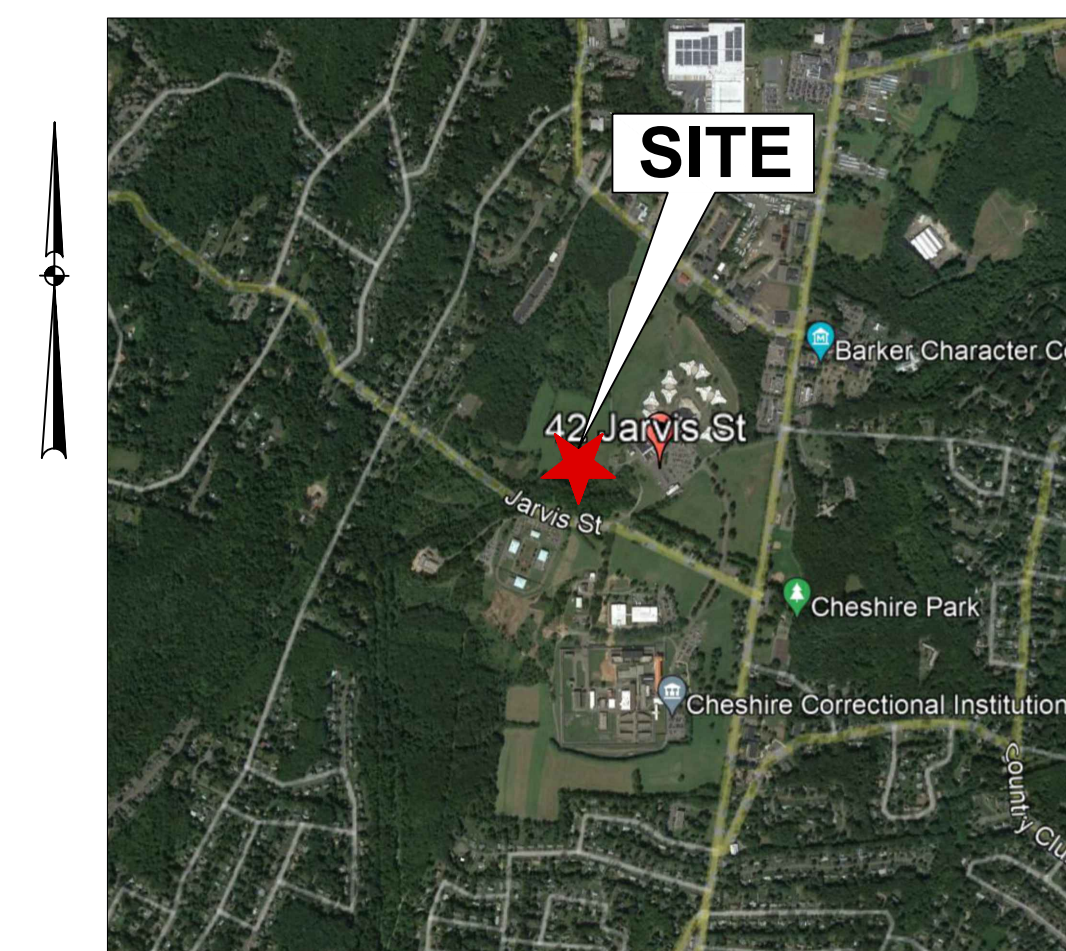
Attention: To check the authenticity of testing /inspection report & certificate, please contact us at telephone: (86-755) 8307 1443, or email: [CN.Deccheck@sgs.com](mailto:CN.Deccheck@sgs.com)

3<sup>rd</sup> Building, No.889 Yishan Road, Xuhui District, Shanghai, China 200233 t (86-21) 61072828 f (86-21) 61152164 www.sgs.com.cn  
中国·上海·徐汇区宜山路889号3号楼 邮编: 200233 t (86-21) 61072828 f (86-21) 61152164 e [sgs.china@sgs.com](mailto:sgs.china@sgs.com)



# CT Green Bank Department of Corrections Solar

Manson Youth Institution  
42 Jarvis Street  
Cheshire, Connecticut



VICINITY MAP  
1"=2,000'  
LATITUDE: 41.528684°  
LONGITUDE: -72.902051°

*Applicant*  
**CT Green Bank**  
75 Charter Oak Ave., Suite 1-103  
Hartford, CT 06106

*Owner*  
**State of Connecticut**  
**Manson Youth Institution**  
42 Jarvis Street  
Cheshire, CT 06410

*Prepared By*

**SUNPOWER®**

1414 HARBOUR WAY SOUTH  
RICHMOND, CA 94804 USA  
(510) 540-0550

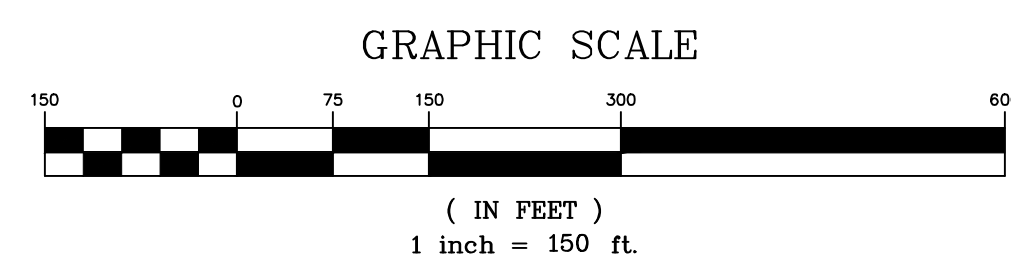


## PERMIT PLANS

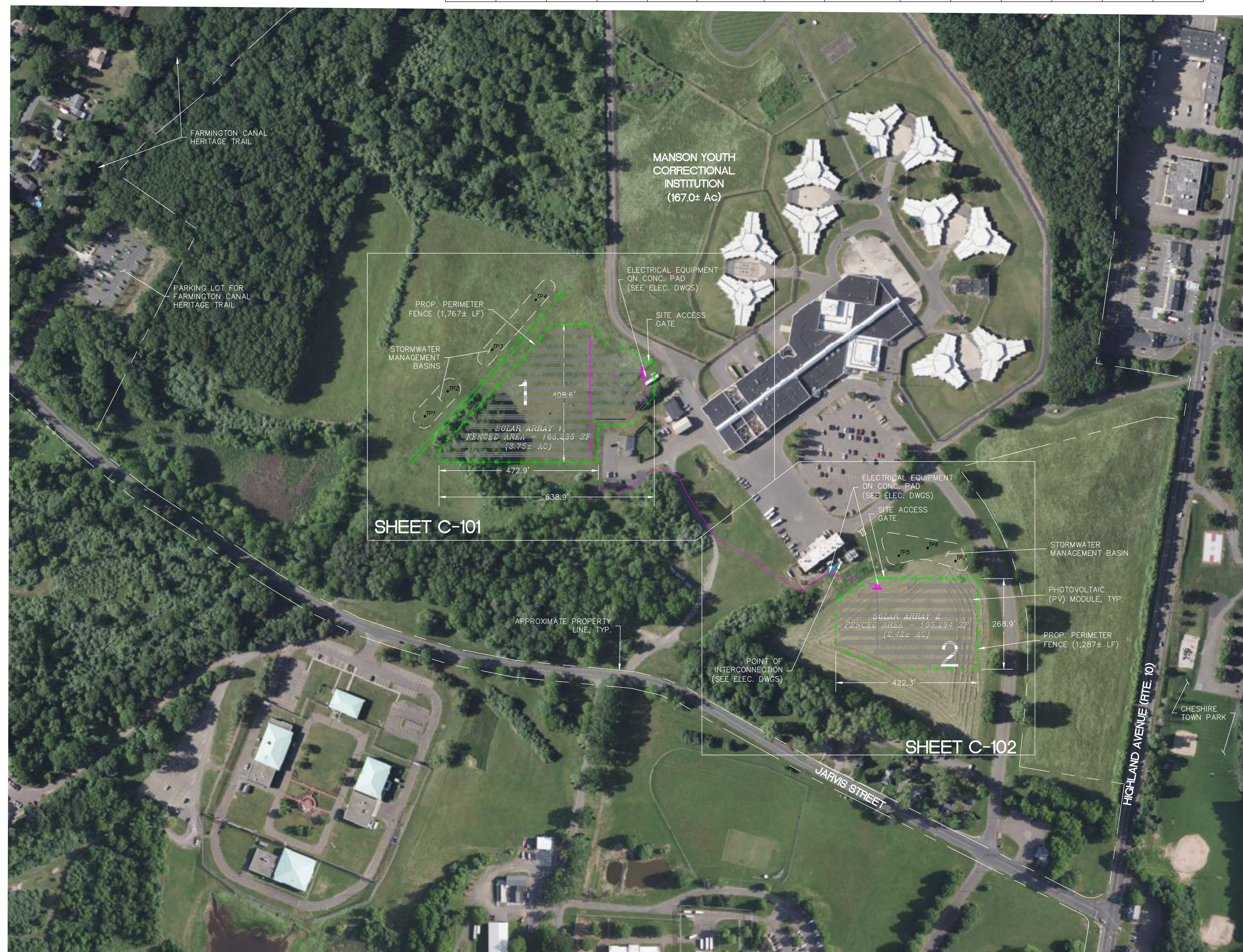
### DRAWING INDEX

SHEET TITLE	SHEET NO.	LATEST REVISION
<b>CIVIL</b>		
COVER SHEET	C-000	10-11-22
OVERALL SITE PLAN	C-100	10-11-22
SITE PLAN (40-SCALE)	C-101	10-11-22
SITE PLAN (40-SCALE)	C-102	10-11-22
EROSION & SEDIMENT CONTROL NOTES	C-201	4-27-22
DETAILS	C-202	4-27-22





SOLAR SWITCHBOARD	BLOCK	# MODULE	#STRING	KW (DC)	18 INPUT CB (W/ 12 STR)	18 INPUT CB (W/ 14 STR)	SHP_150_US_20	KW (AC)	TILT (°)	GCR	CSI AZIMUTH (°)	SPWR AZIMUTH (°)	DC RUN (CB-INV)
SSB01	1	2496	96	1335.36	8		8	1200	25	0.50	180	0	265, 165, 155, 185, 245, 275, 340, 400
SSB02	2	1612	62	862.42	4	1	5	750					20, 75, 110, 165, 200
	TOTAL	4108	158	2197.78	12	1	13	1950					



**RUSSO**  
 SURVEYORS • ENGINEERS  
 SERVING CT & MA  
 J.R. Russo & Associates, LLC  
 1 Shepham Rd East Windsor CT 06088 • CT 860.623.0599 • MA 403.780.1938  
 www.russosurveyors.com • info@russos.com

**Alternative Power Generation Inc.**

**SUNPOWER®**  
 1414 HARBOUR WAY SOUTH  
 RICHMOND, CA 94804 USA  
 (510) 540-0550

REVISIONS

NO.	DATE	DESCRIPTION
10-11-22		PANEL CHANGE, ADJUST LAYOUT

BY: LF/TAC    CHK: JEU

*Connecticut Green Bank*  
*Manson Youth Institution*  
 42 Jarvis Street  
 Cheshire, Connecticut

Overall Plan

DATE	4-27-22
SCALE	1"=150'
JOB NUMBER	2021-040
SHEET	C-100

S:\Acad\2021 Civil 3D\2021-040 APG CT Green Bank\Russo Drawings\2021-040 Cheshire Site.dwg



Test Pit Data:  
Observed by J.R. Russo & Associates on  
2-09-22

TP 1  
0"-11" Sandy Loam Topsoil  
11"-26" Red/Brown Fine-Med Sand  
26"-96" Tan Fine-Med Sand Grading to  
Coarse Sand, Loose  
Water @ 92"  
Mottles @ 60"  
No Ledge

TP 2  
0"-14" Sandy Loam Topsoil  
14"-32" Red/Brown Loamy Sand  
32"-96" Tan Fine-Med Sand Grading to  
Coarse Sand  
No Water  
Mottles @ 64"  
No Ledge

TP 3  
0"-14" Sandy Loam Topsoil  
14"-34" Red/Brown Fine-Med Sand  
34"-62" Tan Fine-Med Sand  
62"-96" Red/Brown Med-Coarse Sand &  
Gravel  
No Water  
Mottles @ 62"  
No Ledge

TP 4  
0"-12" Sandy Loam Topsoil  
12"-26" Red/Brown Fine-Med Sand  
26"-62" Red/Brown Fine-Med Sand &  
Gravel  
62"-96" Red/Brown Med-Coarse Sand &  
Gravel  
No Water  
Mottles @ 62"  
No Ledge

Permeability Results:

TP1/18"-24": 8.273 in/hr  
TP2/18"-24": 10.313 in/hr  
TP3/18"-24": 9.096 in/hr  
TP4/18"-24": 9.054 in/hr

NOTE: ALL DISTURBED  
VEGETATED AREAS TO BE  
RESTORED W/ MIN. 6"  
TOPSOIL, SEED MIX & MULCH

LEGEND

□	EXISTING UTILITY HANDHOLE
□	EXISTING ELECTRIC HANDHOLE
○	EXISTING ELECTRIC MANHOLE
○	EXISTING TELECOMMUNICATIONS MANHOLE
○	EXISTING UTILITY POLE
☆	EXISTING LIGHT POLE
OH	EXISTING OVERHEAD UTILITIES
UG	EXISTING UNDERGROUND ELECTRIC
UGT	EXISTING UNDERGROUND TELECOMM
E	PROPOSED UNDERGROUND ELECTRIC
W	EXISTING WATER GATE
W	EXISTING HYDRANT
W	EXISTING WATER
W	EXISTING GAS GATE
GAS	EXISTING GAS LINE
□	EXISTING CATCH BASIN
□	EXISTING DRAINAGE MANHOLE
□	EXISTING STORM SEWER
□	PROPOSED STORM SEWER
□	EXISTING SANITARY MANHOLE
□	EXISTING SANITARY SEWER
□	EXISTING SIGN
□	EXISTING IRON PIN (FOUND)
□	EXISTING MONUMENT (FOUND)
○	EXISTING SPOT GRADE
○	PROPOSED SPOT GRADE
○	EXISTING CONTOUR
○	PROPOSED CONTOUR
○	EXISTING TRELINE
○	LIMIT OF WETLANDS
○	PROPERTY LINE
○	EASEMENT LINE
○	SEDIMENT BARRIER

EROSION & SEDIMENT CONTROL PLAN KEY

PS	PERMANENT SEEDING
TS	TEMPORARY SEEDING
CE	CONSTRUCTION ENTRANCE
GSF	GEOTEXTILE SILT FENCE
OP	OUTLET PROTECTION

Reference Maps:

- "Site Distribution Plan State of Connecticut Public Works Department, Central Plan, Juvenile Corrections Community, Cheshire, Connecticut Drawing No. H-1, Scale: 1"=100' Date: Dec. 15, 1974 As-built 5-27-81" by Jacob Koton, P.E.

Notes:

- Portion of the parcel is located in inland wetlands as delineated by Davison Environmental in October 2021.
- Parcel is not located in a flood hazard zone per FEMA Flood panel nos. 09009C0143H & 09009C0143J.
- Horizontal datum based on N.A.D. 1983. Elevations based on N.A.V.D. 1988 Datum.
- All underground utility locations on this plan are approximate and may not be complete. Anyone using this information without verifying the locations does so at their own risk. No construction will be done on this site prior to utility mark out. "Call Before You Dig 1-800-922-4455".



Alternative Power  
Generation Inc.

SUNPOWER®

1414 HARBOUR WAY SOUTH  
RICHMOND, CA 94804 USA  
(510) 540-0550

THE COMPANY SHALL BE RESPONSIBLE FOR THE ACCURACY OF THE INFORMATION PROVIDED TO THE CLIENT AND SHALL BE RESPONSIBLE FOR THE INFORMATION PROVIDED TO THE CLIENT.

10-11-22 PANEL CHANGE, ADJUST LAYOUT

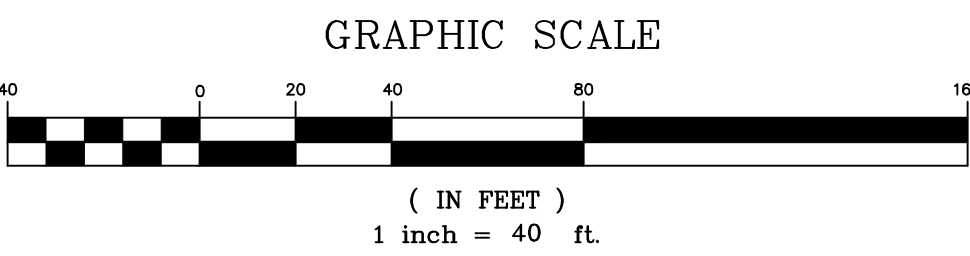
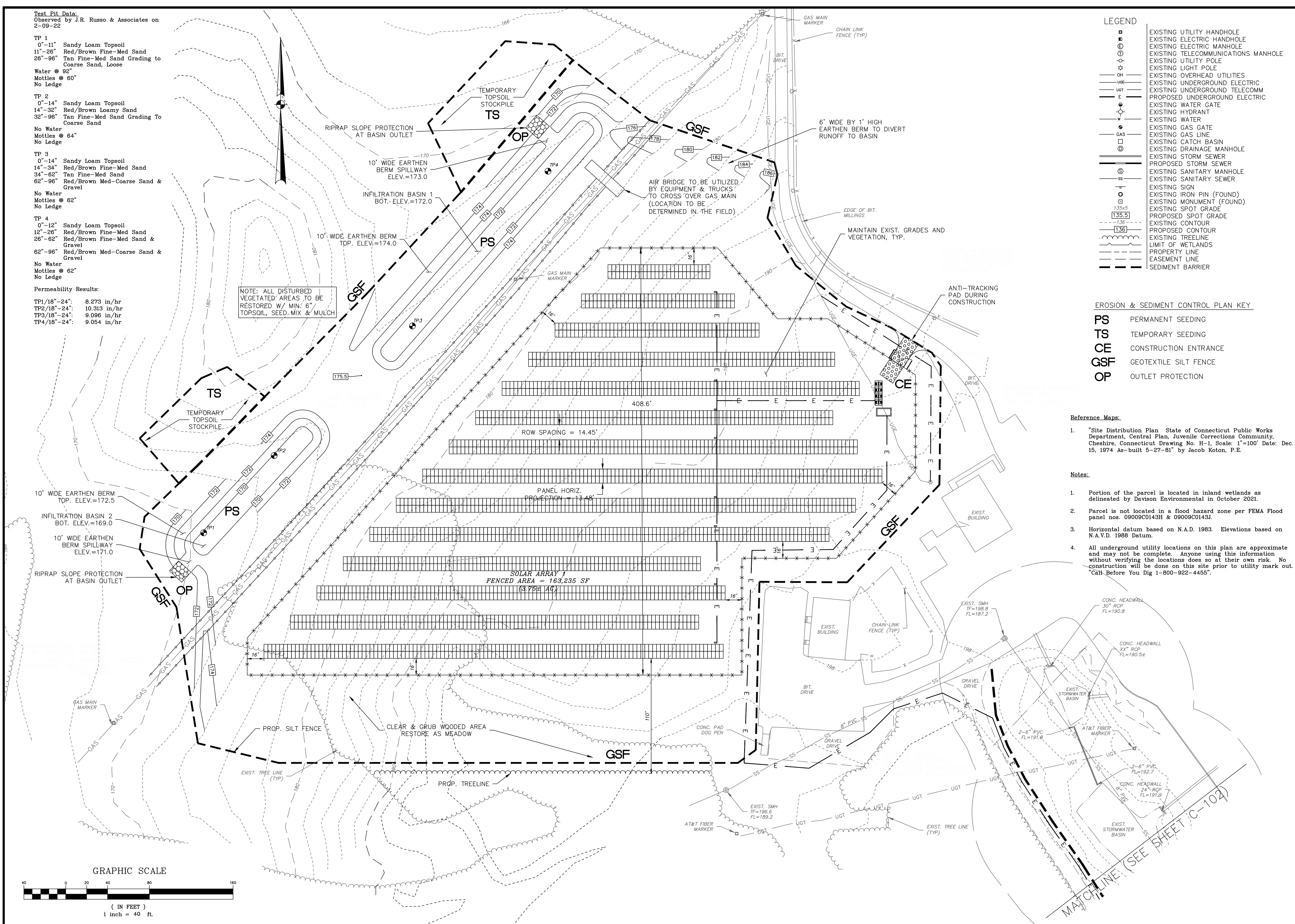
REVISIONS

BY: LF/TAC CHK: JEU

Connecticut Green Bank  
Manson Youth Institute  
42 Jarvis Street  
Cheshire, Connecticut

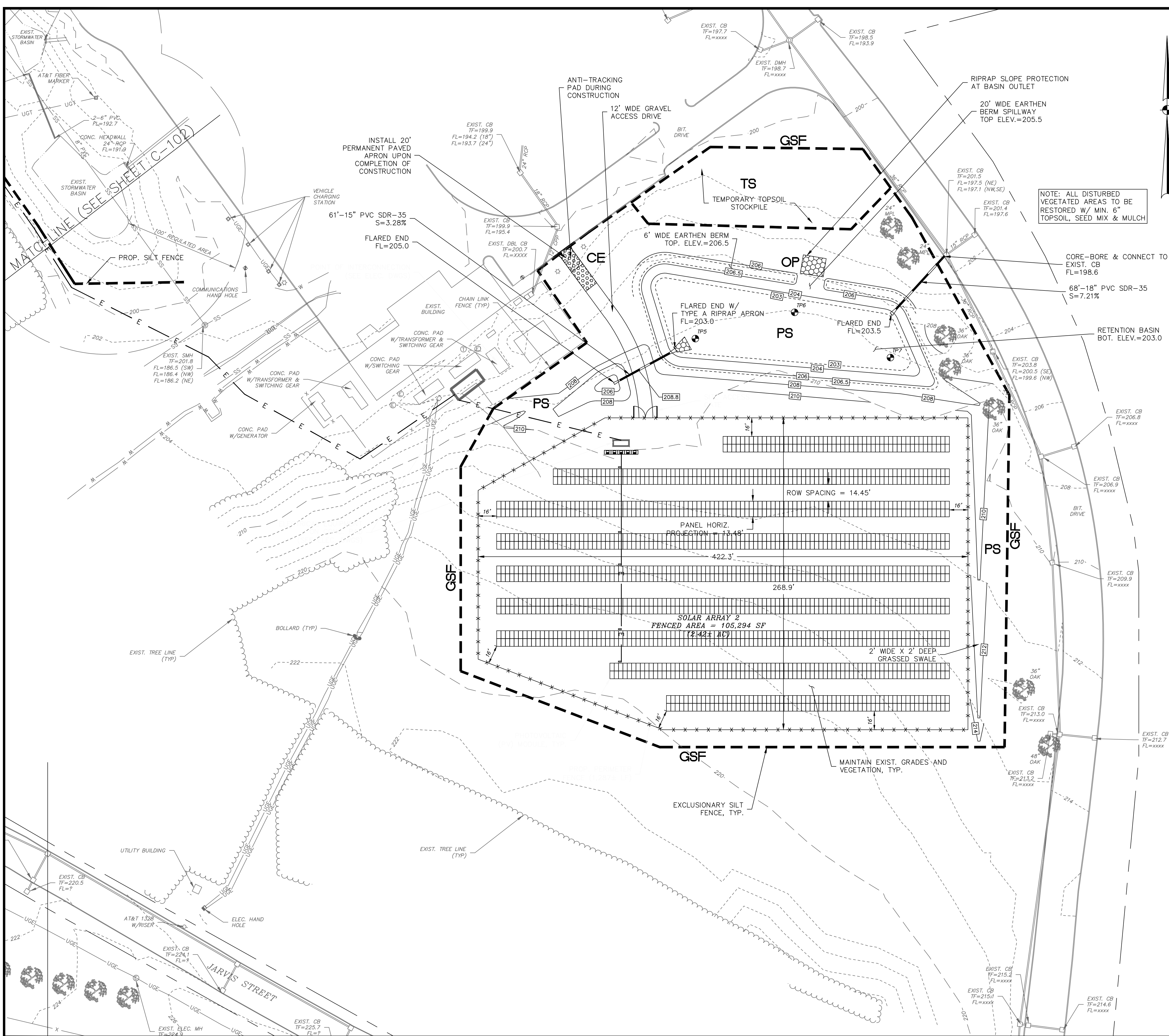
Site Plan

DATE	4-27-22
SCALE	1"=40'
JOB NUMBER	2021-040
SHEET	C-101





S:\Acad\2021 Civil 3D\2021-040 APG CT Green Bank\Russio Drawings\2021-040 Cheshire Site.dwg



**LEGEND**

- EXISTING UTILITY HANDHOLE
- EXISTING ELECTRIC HANDHOLE
- EXISTING ELECTRIC MANHOLE
- EXISTING TELECOMMUNICATIONS MANHOLE
- EXISTING UTILITY POLE
- EXISTING LIGHT POLE
- EXISTING OVERHEAD UTILITIES
- EXISTING UNDERGROUND ELECTRIC
- EXISTING UNDERGROUND TELECOMM
- PROPOSED UNDERGROUND ELECTRIC
- EXISTING WATER GATE
- EXISTING HYDRANT
- EXISTING WATER
- EXISTING GAS GATE
- EXISTING GAS LINE
- EXISTING CATCH BASIN
- EXISTING DRAINAGE MANHOLE
- EXISTING STORM SEWER
- PROPOSED STORM SEWER
- EXISTING SANITARY MANHOLE
- EXISTING SANITARY SEWER
- EXISTING SIGN
- EXISTING IRON PIN (FOUND)
- EXISTING MONUMENT (FOUND)
- EXISTING SPOT GRADE
- PROPOSED SPOT GRADE
- EXISTING CONTOUR
- PROPOSED CONTOUR
- EXISTING TREELINE
- LIMIT OF WETLANDS
- PROPERTY LINE
- EASEMENT LINE
- SEDIMENT BARRIER

NOTE: ALL DISTURBED VEGETATED AREAS TO BE RESTORED W/ MIN. 6" TOPSOIL, SEED MIX & MULCH

**Reference Maps:**

- 'Site Distribution Plan State of Connecticut Public Works Department, Central Plan, Juvenile Corrections Community, Cheshire, Connecticut Drawing No. H-1, Scale: 1"=100' Date: Dec. 15, 1974 As-built 5-27-81" by Jacob Koton, P.E.

**Notes:**

- Portion of the parcel is located in inland wetlands as delineated by Davison Environmental in October 2021.
- Parcel is not located in a flood hazard zone per FEMA Flood panel nos. 09009C0143H & 09009C0143J.
- Horizontal datum based on N.A.D. 1983. Elevations based on N.A.V.D. 1988 Datum.
- All underground utility locations on this plan are approximate and may not be complete. Anyone using this information without verifying the locations does so at their own risk. No construction will be done on this site prior to utility mark out. "Call Before You Dig 1-800-922-4455".

**EROSION & SEDIMENT CONTROL PLAN KEY**

- PS** PERMANENT SEEDING
- TS** TEMPORARY SEEDING
- CE** CONSTRUCTION ENTRANCE
- GSF** GEOTEXTILE SILT FENCE
- OP** OUTLET PROTECTION

**Test Pit Data:**

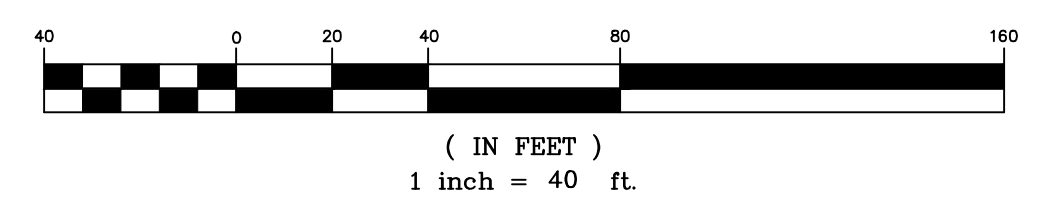
Observed by J.R. Russo & Associates on 2-09-22

- TP 5**  
0"-9" Sandy Loam Topsoil  
9"-70" Red/Brown Silty Sand & Gravel  
Till, Firm, Stony  
70"-96" Grey Cemented Fine-Coarse Sand  
No Water, No Ledge, No Mottles
- TP 6**  
0"-10" Sandy Loam Topsoil  
10"-64" Red/Brown Silty Sand & Gravel  
Till, Firm, Stony  
70"-96" Grey Cemented Fine-Coarse Sand  
No Water, No Ledge, No Mottles
- TP 7**  
0"-7" Sandy Loam Topsoil  
7"-64" Red/Brown Silty Sand & Gravel  
Till, Firm, Stony  
64"-84" Grey Cemented Fine-Coarse Sand  
No Water, No Ledge, No Mottles

**Permeability Results:**

- TP5/30"-36": 1.235 in/hr
- TP6/30"-36": 0.900 in/hr
- TP7/30"-36": 0.574 in/hr

**GRAPHIC SCALE**



**RUSO**  
SURVEYORS-ENGINEERS  
SERVING CT & MA

J.R. Russo & Associates, LLC  
1570 Main Rd East Windsor CT 06088 • CT 860.623.0599 • MA 413.780.1938  
www.russio.com • info@russio.com

**Alternative Power Generation Inc.**

**SUNPOWER**

1414 HARBOUR WAY SOUTH  
RICHMOND, CA 94804 USA  
(510) 540-0550

THE COMPANY'S DESIGN, PREPARED, APPROVED, CONTRACTED, FOR, AND/OR USED IN CONNECTION WITH THE DESIGN, CONSTRUCTION OR INSTALLATION OF ANY PROJECT IS LIMITED TO THE PROJECT AND SITE SPECIFIC.

NO.	DESCRIPTION	DATE

REVISIONS	
BY: LF/TAC	CHK: JEU

Connecticut Green Bank  
 Manson Youth Institute  
 42 Jarvis Street  
 Cheshire, Connecticut

Site Plan	
DATE	4-27-22
SCALE	1"=40'
JOB NUMBER	2021-040
SHEET	C-102



PERMANENT SEEDING (PS)

**SPECIFICATIONS**

**Time Of Year**

Seeding dates in Connecticut are normally April 1 through June 15 and August 15 through October 1. Spring seedings give the best results and spring seedings of all mixes with legumes is recommended. There are two exceptions to the above dates. The first exception is when seedings will be made in the areas of Connecticut known as the Coastal Slope and the Connecticut River Valley. The Coastal Slope includes the coastal towns of New London, Middlesex, New Haven, and Fairfield counties. In these areas, with the exception of crown vetch (when crown vetch is seeded in late summer, at least 35% of the seed should be hard seed (unscarified), the final fall seeding dates can be extended and additional 15 days. The second exception is frost crack or dormant seeding, the seed is applied during the time of year when no germination can be expected, normally November through February. Germination will take place when weather conditions improve, mulching is extremely important to protect the seed from wind and surface erosion and to provide erosion protection until the seeding becomes established.

**Site Preparation**

Grade in accordance with the Land Grading measure which is in the Connecticut Guidelines For Soil Erosion and Sediment Control latest edition.

Install all necessary surface water controls.

For areas to be mowed remove all surface stones 2 inches or larger. Remove all other debris such as wire, cable tree roots, pieces of concrete, clods, lumps, or other unsuitable material.

**Seed Selection**

Lawn Areas: Premium Seed Mix for Sun and Shade.  
Field Areas: Companion Seed Mix by Kings Agriseed Inc. or approved equal.  
Stormwater Basin: New England Erosion Control/Restoration Mix by New England Wetland Plants, Inc. or approved equal.

**Seedbed Preparation**

Apply topsoil, if necessary, in accordance with the Topsoiling measure which is in the Connecticut Guidelines For Soil Erosion and Sediment Control latest edition.

Apply ground limestone and fertilizer according to soil test recommendations (such as those offered by the University of Connecticut Soil Testing Laboratory or other reliable source).

Where soil testing is not feasible on small or variable sites, or where timing is critical, fertilizer may be applied at the rate of 300 pounds per acre or 7.5 pounds per 1,000 square feet of 10-10-10 or equivalent and limestone at 4 tons per acre or 200 pounds per 1,000 square feet.

Work lime and fertilizer into the soil to a depth of 3 to 4 inches with a disc or other suitable equipment.

Inspect seedbed just before seeding. If the soil is compacted, crusted or hardened, scarify the area prior to seeding.

**Seed Application**

Apply selected seed at rates per manufacturer's recommendations uniformly by hand, cyclone seeder, drill, cultipacker type seeder or hydroseeder (slurry including seed, fertilizer). Normal seeding depth is from 0.25 to 0.5 inch. Increase seeding rates by 10% when hydroseeding or frost crack seeding. Seed warm season grasses during the spring period only.

**Mulching**

See guidelines in the Mulch For Seed measures.

**MAINTENANCE**

Inspect temporary soil protection area at least once a week and within 24 hours of the end of a storm with a rainfall amount of 0.5 inch or greater during the first growing season.

Where seed has been moved or where soil erosion has occurred, determine the cause of the failure and repair as needed.

TEMPORARY SEEDING (TS)

**SPECIFICATIONS**

**Site Preparation**

Install needed erosion control measures such as diversions, grade stabilization structures, sedimentation basins and grassed waterways in accordance with the approved plan.

Grade according to plans and allow for the use of appropriate equipment for seedbed preparation, seeding, mulch application and mulch anchoring.

**Seedbed Preparation**

Loosen the soil to a depth of 3-4 inches with a slightly roughened surface. If the area has been recently loosened or disturbed, no further roughening is required. Soil preparation can be accomplished by tracking with a bulldozer, discing, harrowing, raking or dragging with a section of chain link fence.

Apply ground limestone and fertilizer according to soil test recommendations (such as those offered by the University of Connecticut Soil Testing Laboratory or other reliable source).

If soil testing is not feasible on small or variable sites, or where timing is critical, fertilizer may be applied at the rate of 300 pounds per acre or 7.5 pounds per 1,000 square feet of 10-10-10 or equivalent.

**Seeding**

Apply seed uniformly by hand, cyclone seeder, drill, cultipacker type seeder or hydroseeder. The temporary seed shall be Rye (grain) applied at a rate of 120 pounds per acre. Increase seeding rates by 10% when hydroseeding.

**Mulching**

See guidelines in the Mulch For Seed measures.

**MAINTENANCE**

Inspect temporary seeding area at least once a week and within 24 hours of the end of a storm with a rainfall amount of 0.5 inch or greater for seed and mulch movement and rill erosion.

Where seed has been moved or where soil erosion has occurred, determine the cause of the failure and repair as needed.

MULCH FOR SEED (MS)

**SPECIFICATIONS**

**Materials**

Types of Mulches within this specification include, but are not limited to:

1. **Hay:** The dried stems and leafy parts of plants cut and harvested, such as alfalfa, clovers, other forage legumes and the finer stemmed, leafy grasses. The average stem length should not be less than 4 inches. Hay that can be windblown should be anchored to hold it in place.

2. **Straw:** Cut and dried stems of herbaceous plants, such as wheat, barley, cereal rye, or bromo. The average stem length should not be less than 4 inches. Straw that can be windblown should be anchored to hold it in place.

3. **Cellulose Fiber:** Fiber origin is either virgin wood, post-industrial/pre-consumer wood or post consumer wood complying with materials specification (collectively referred to as "wood fiber"), newspaper, kraft paper, cardboard (collectively referred to as "paper fiber") or a combination of wood and paper fiber. Paper fiber, in particular, shall not contain boron, which inhibits seed germination. The cellulose fiber must be manufactured in such a manner that after the addition to and agitation in slurry tanks with water, the fibers in the slurry become uniformly suspended to form a homogeneous product. Subsequent to hydraulic spraying on the ground, the mulch shall allow for the absorption and percolation of moisture and shall not form a tough crust such that it interferes with seed germination or growth. Generally applied with tackifier and fertilizer. Refer to manufacturer's specifications for application rates needed to attain 80%-95% coverage without interfering with seed germination or plant growth. Not recommended as a mulch for use when seeding occurs outside of the recommended seeding dates.

**Tackifiers** within this specification include, but are not limited to: Water soluble materials that cause mulch particles to adhere to one another, generally consisting of either a natural vegetable gum blended with gelling and hardening agents or a blend of hydrophilic polymers, resins, viscosifiers, sticking aids and gums. Good for areas intended to be mowed. Cellulose fiber mulch may be applied as a tackifier to other mulches, provided the application is sufficient to cause the other mulches to adhere to one another. Emulsified asphalts are specifically prohibited for use as tackifiers due to their potential for causing water pollution following its application.

**Nettings** within this specification include, but are not limited to: Prefabricated openwork fabrics made of cellulose cords, ropes, threads, or biodegradable synthetic material that is woven, knotted or molded in such a manner that it holds mulch in place until vegetation growth is sufficient to stabilize the soil. Generally used in areas where no mowing is planned.

**Site Preparation**

Grade according to plans and allow for the use of appropriate equipment for seedbed preparation, seeding, mulch application and mulch anchoring.

**Application**

**Timing:** Applied immediately following seeding. Some cellulose fiber may be applied with seed to assist in marking where seed has been sprayed, but expect to apply a second application of cellulose fiber to meet the requirements of Mulch For Seed in the Connecticut Guidelines For Soil Erosion and Sediment Control latest edition.

**Spreading:** Mulch material shall be spread uniformly by hand or machine resulting in 80%-95% coverage of the disturbed soil when seeding within the recommended seeding dates. Applications that are uneven can result in excessive mulch smothering the germinating seeds. For hay or straw anticipate an application rate of 2 tons per acre. For cellulose fiber follow manufacturer's recommended application rates to provide 80%-95% coverage.

When seeding outside the recommended seeding dates, increase mulch application rate to provide between 95%-100% coverage of the disturbed soil. For hay or straw anticipate an application rate to 2.5 to 3 tons per acre.

When spreading hay mulch by hand, divide the area to be mulched into approximately 1,000 square feet and place 1.5-2 bales of hay in each section to facilitate uniform distribution.

For cellulose fiber mulch, expect several spray passes to attain adequate coverage, to eliminate shadowing, and to avoid slippage.

**Anchoring:** Expect the need for mulch anchoring along the shoulders of actively traveled roads, hill tops and long open slopes not protected by wind breaks.

When using netting, the most critical aspect is to ensure that the netting maintains substantial contact with the underlying mulch and the mulch, in turn, maintains continuous contact with the soil surface. Without such contact, the material is useless and erosion can be expected to occur.

**MAINTENANCE**

Inspect mulch for seed area at least once a week and within 24 hours of the end of a storm with a rainfall amount of 0.5 inch or greater until the grass has germinated to determine maintenance needs.

Where mulch has been moved or where soil erosion has occurred, determine the cause of the failure and repair as needed.

TEMPORARY SEEDING (TS)

**SPECIFICATIONS**

**Site Preparation**

Install needed erosion control measures such as diversions, grade stabilization structures, sedimentation basins and grassed waterways in accordance with the approved plan.

Grade according to plans and allow for the use of appropriate equipment for seedbed preparation, seeding, mulch application and mulch anchoring.

**Seedbed Preparation**

Loosen the soil to a depth of 3-4 inches with a slightly roughened surface. If the area has been recently loosened or disturbed, no further roughening is required. Soil preparation can be accomplished by tracking with a bulldozer, discing, harrowing, raking or dragging with a section of chain link fence.

Apply ground limestone and fertilizer according to soil test recommendations (such as those offered by the University of Connecticut Soil Testing Laboratory or other reliable source).

If soil testing is not feasible on small or variable sites, or where timing is critical, fertilizer may be applied at the rate of 300 pounds per acre or 7.5 pounds per 1,000 square feet of 10-10-10 or equivalent.

**Seeding**

Apply seed uniformly by hand, cyclone seeder, drill, cultipacker type seeder or hydroseeder. The temporary seed shall be Rye (grain) applied at a rate of 120 pounds per acre. Increase seeding rates by 10% when hydroseeding.

**Mulching**

See guidelines in the Mulch For Seed measures.

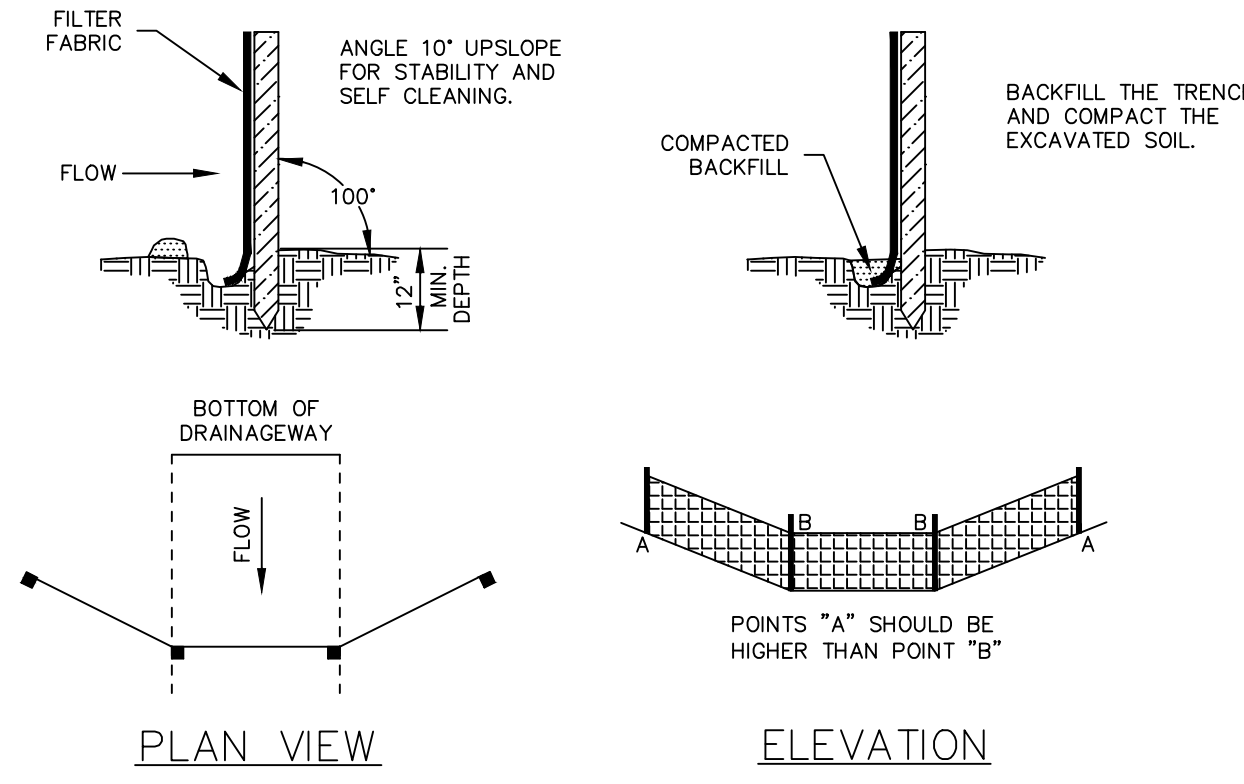
**MAINTENANCE**

Inspect temporary seeding area at least once a week and within 24 hours of the end of a storm with a rainfall amount of 0.5 inch or greater for seed and mulch movement and rill erosion.

Where seed has been moved or where soil erosion has occurred, determine the cause of the failure and repair as needed.

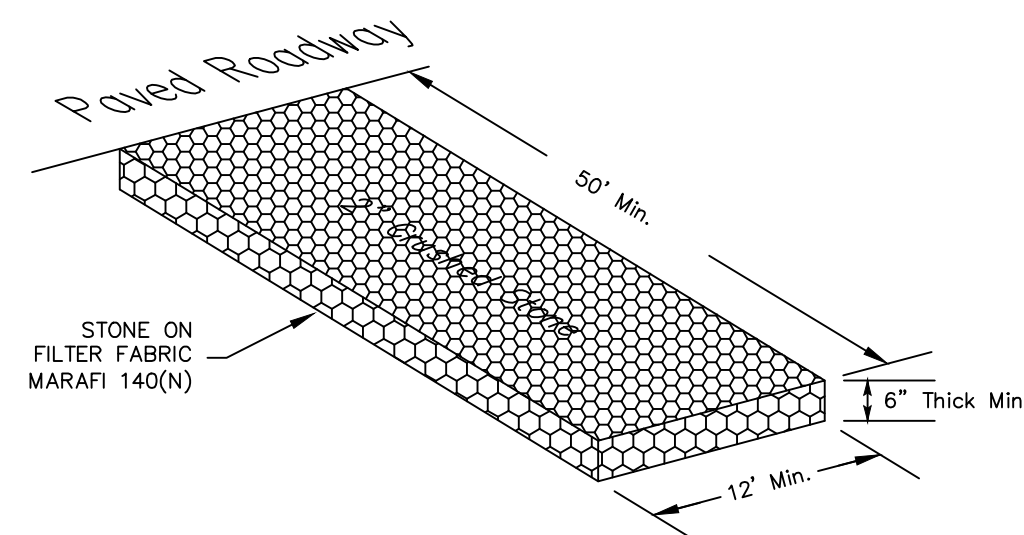
SOIL EROSION & SEDIMENT CONTROL NOTES

- All soil erosion and sediment control work shall be done in strict accordance with the Connecticut Guidelines For Soil Erosion and Sediment Control latest edition.
- Any additional erosion/sediment control deemed necessary by the engineer during construction, shall be installed by the developer. In addition, the developer shall be responsible for the repair/replacement and/or maintenance of all erosion control measures until all disturbed areas are stabilized to the satisfaction of the town staff.
- All soil erosion and sediment control operations shall be in place prior to any grading operations and installation of proposed structures or utilities and shall be left in place until construction is completed and/or area is stabilized.
- In all areas, removal of trees, bushes and other vegetation as well as disturbance of the soil is to be kept to an absolute minimum while allowing proper development of the site. During construction, expose as small an area of soil as possible for as short a time as possible.
- The developer shall practice effective dust control per the soil conservation service handbook during construction and until all areas are stabilized or surface treated. The developer shall be responsible for the cleaning of nearby streets, as ordered by the town, of any debris from these construction activities.
- All fill areas shall be compacted sufficiently for their intended purpose and as required to reduce slipping, erosion or excess saturation. Fill intended to support buildings, structures, conduits, etc., shall be compacted in accordance with local requirements or codes.
- Topsoil is to be stripped and stockpiled in amounts necessary to complete finished grading of all exposed areas requiring topsoil. The stockpiled topsoil is to be located as designated on the plans. Topsoil shall not be placed while in a frozen or muddy condition, when the subgrade is excessively wet, or in a condition that may otherwise be detrimental to proper grading or proposed sodding or seeding.
- Any and all fill material is to be free of brush, rubbish, timber, logs vegetative matter and stumps in amounts that will be detrimental to constructing stable fills. Maximum side slopes of exposed surfaces of earth to be 3:1 or as otherwise specified by local authorities.
- Soil stabilization should be completed within 5 days of clearing or inactivity in construction.
- Waste Materials - All waste materials (including wastewater) shall be disposed of in accordance with local, state and federal law. Litter shall be picked up at the end of each work day.
- The Contractor shall maintain on-site additional erosion control materials as a contingency in the event of a failure or when required to shore up existing BMPs. At a minimum, the on-site contingency materials should include 30 feet of silt fence and 5 straw haybales with 10 stakes.

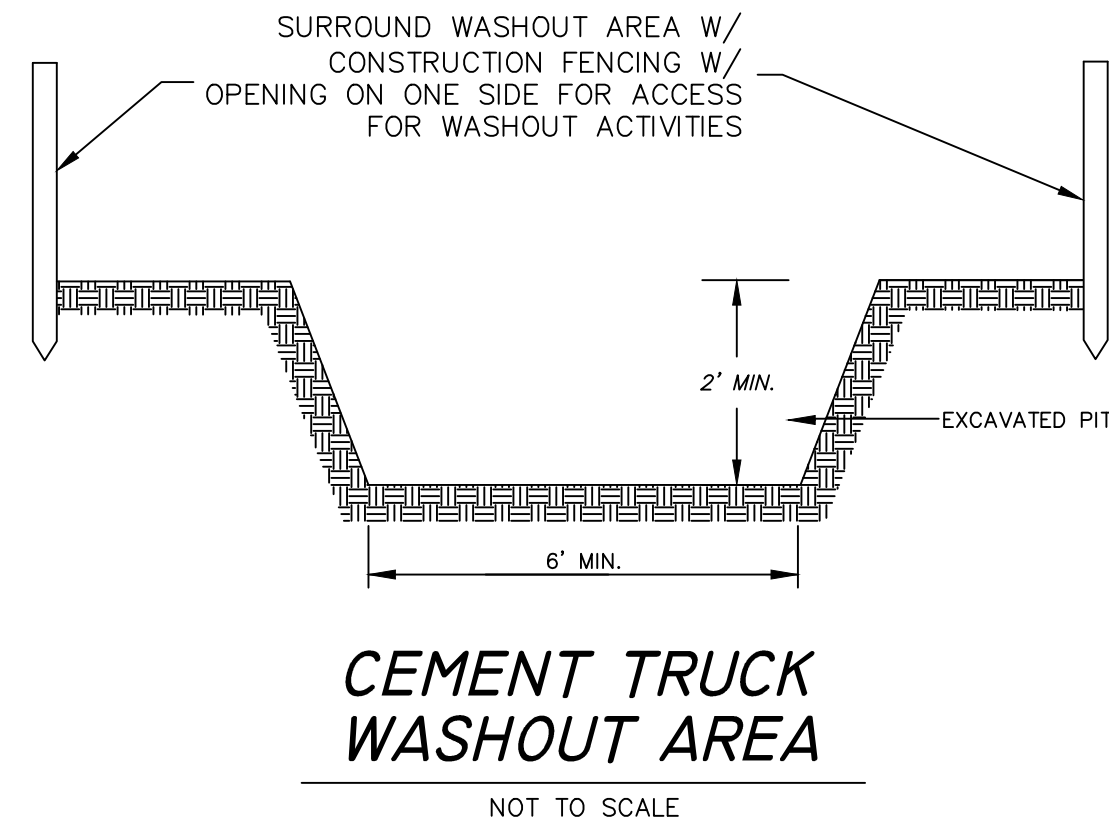


SOURCE: U.S. DEPARTMENT OF AGRICULTURE, SOIL CONSERVATION SERVICE, STORRS, CONNECTICUT

**GEOTEXTILE SILT FENCE (GSF)**  
NOT TO SCALE



**DRIVEWAY/ANTI-TRACKING PAD DETAIL (CE)**  
NOT TO SCALE



**CEMENT TRUCK WASHOUT AREA**  
NOT TO SCALE

CHECKLIST FOR EROSION CONTROL PLAN

**PROJECT:** CT Green Bank Solar Manson Youth Correctional Institute  
**LOCATION:** 42 Jarvis Street, Cheshire, CT  
**PROJECT DESCRIPTION:** Construction of Photovoltaic Solar Arrays  
**PARCEL AREA:** 244.6 acres  
**RESPONSIBLE PERSONNEL:** Ed Pastulnik, Alternate Power Generation, Inc. (APG); 847-477-7455  
**EROSION AND SEDIMENT CONTROL PLAN PREPARER:** J.R. Russo & Associates, LLC

Work Description Erosion & Sediment Control Measures	Location	Date Installed	Initials	Date Removed	Initials
Install construction entrance	As shown on plan.				
Install perimeter sediment barriers	As shown on plan.				

Location	Description or Number	Date	Initials

**Project Dates:**  
**Date of groundbreaking for project:** \_\_\_\_\_  
**Date of final stabilization:** \_\_\_\_\_

PROJECT NARRATIVE AND CONSTRUCTION SEQUENCE

This project is located at the Connecticut Department of Corrections Manson Youth Correctional Institution located at 42 Jarvis Street in Cheshire, Connecticut. The proposed activity is the construction of a photovoltaic solar array. The suggested schedule of construction is as follows:

- Conduct a pre-construction meeting on-site with the contractor to review the design and requirements of the Stormwater Pollution Control Plan. In addition, the qualified biologist shall make a presentation to educate the Contractor and on-site personnel on how to identify the eastern box turtle, and measures to be taken if encountered.
- Install perimeter exclusionary silt fence (GSF) around the construction envelope as shown on the project plans.
- Contractor to perform an initial sweep for turtles within the construction envelope and remove turtles found outside of the envelope. Similar sweeps along the perimeter fence shall be conducted by the contractor each day prior to the start of work.
- Install anti-tracking pad (CE).
- Clear trees & grub stumps in areas as shown on Plans. All debris to be removed from the site.
- Strip topsoil in the vicinity of the proposed stormwater management basins. Stockpile suitable amount of topsoil for reuse on-site in areas shown. Stockpiles shall be surrounded by sediment barriers (GSF).
- Construct stormwater management basin. Seed and mulch to establish vegetation as soon as practicable.
- Install foundations and solar panels.
- Install electrical equipment and distribution lines.
- Install security fence.
- Restore all disturbed areas with topsoil, seed mix and mulch as soon as practicable.
- Remove silt fence after site is fully stabilized.

Construction of this site is anticipated to begin in the spring of 2022 and be complete by January 2023, pending approvals. Temporary erosion control measures shall be installed prior to any soil disturbance and maintained throughout construction until soils have been stabilized with permanent vegetation.

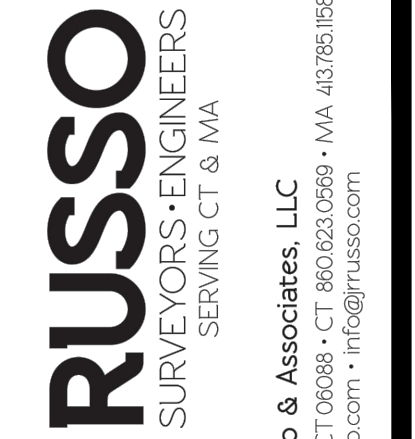
The Contractor shall keep the area of disturbance to a minimum and establish vegetative cover on exposed soils as soon as practical. All soil and erosion control measures shall be installed and maintained in accordance with these plans and the "Connecticut DEP Guidelines for Soil Erosion and Sediment Control", as amended. The Contractor shall verify all conditions noted on the plans and shall immediately notify the Engineer of any discrepancies.

The developer shall be responsible for the repair/replacement/maintenance of all erosion control measures until all disturbed areas are stabilized. Accumulated sediment shall be removed as required to keep silt fence functional. In all cases, deposits shall be removed when the accumulated sediment has reached one-half above the ground height of the silt fence. This material is to be spread and stabilized in areas not subject to erosion, or to be used in areas which are not to be paved or built on. Silt fence (GSF) is to be replaced as necessary to maintain proper filtering action. Silt fence (GSF) are to remain in place and shall be maintained to insure efficient sediment capture until all areas above the erosion checks are stabilized and vegetation has been established.

POST CONSTRUCTION MAINTENANCE NOTES:

The property owner shall be responsible for performing the following post construction maintenance schedule:

- Maintain lawn & landscape areas with minimal pesticides.
- Sweep parking lot and paved areas at least once per year in the spring.
- Inspect catch basins and storm manholes at least twice per year, including after sweeping. Clean at least once per year in April and as necessary to prevent the discharge of pollutants from structures. Remove accumulated oil, trash and excessive sediment with vac-truck. Check condition of hoods (if applicable).
- Inspect infiltration basin annually for evidence of hydrocarbons and remove by vac-truck. Repair eroded areas and replace riprap and vegetation as required. Dredge bottom to remove accumulated sediment every 10 years or when significant volume reduction is observed. Mow infiltration basin on a regular basis to maintain as lawn area for filtering of pollutants.



--	--	--	--	--	--	--	--	--	--

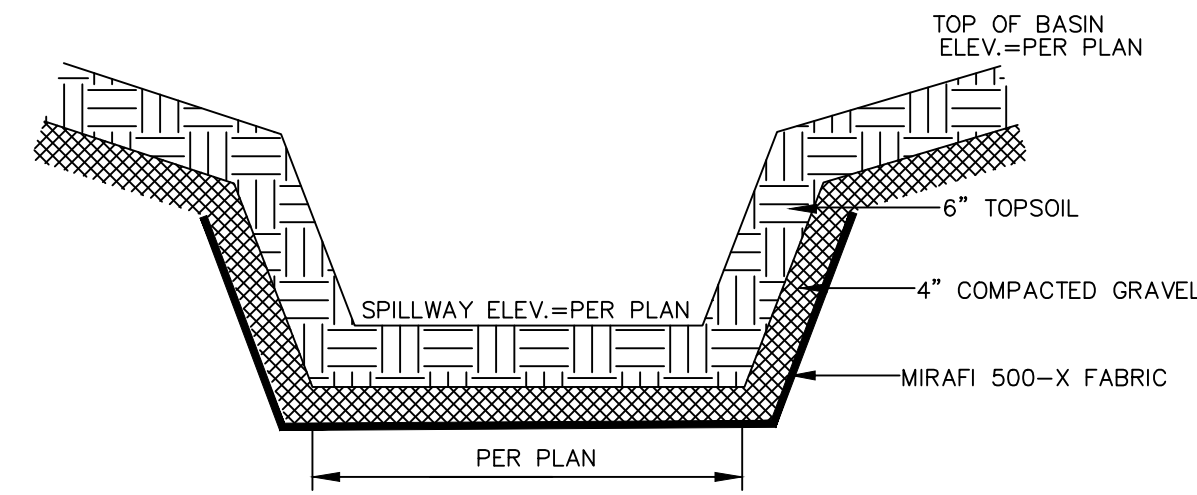
BY: LF/TAC	CHK: JEU
------------	----------

Connecticut Green Bank  
 Manson Youth Institute  
 42 Jarvis Street  
 Cheshire, Connecticut

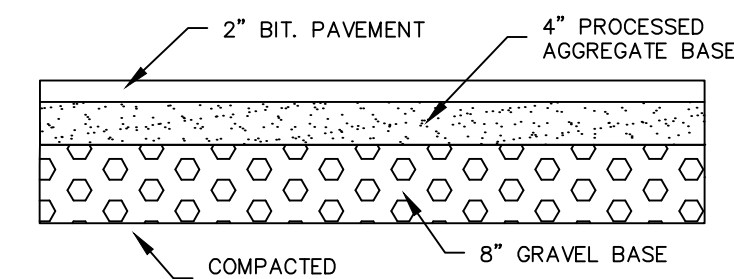
Erosion & Sediment Control Notes & Details

DATE	4-27-22
SCALE	AS SHOWN
JOB NUMBER	2021-040
SHEET	C-201

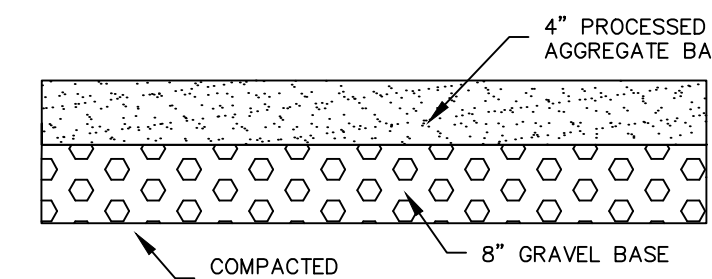




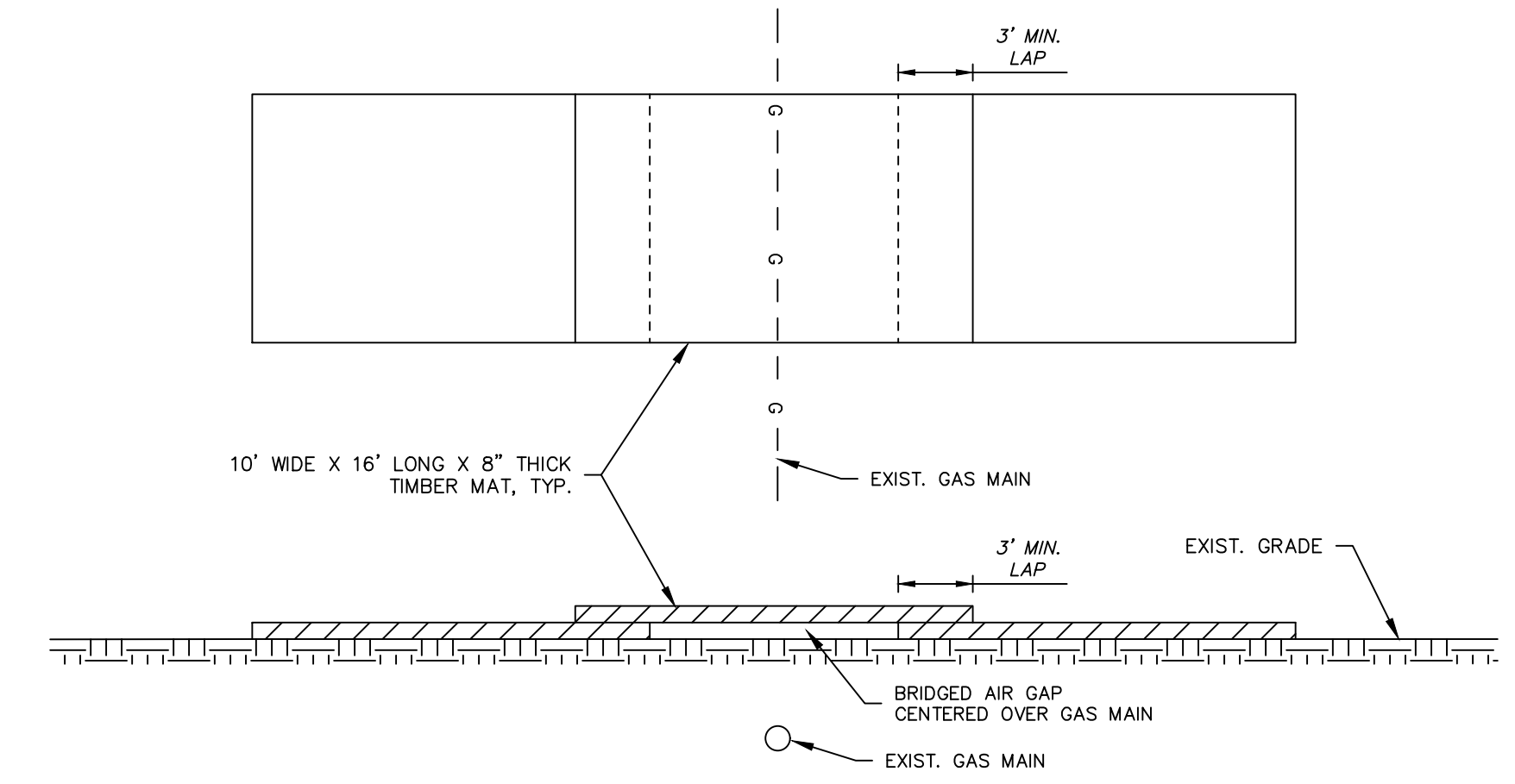
**EARTHEN SPILLWAY**  
NOT TO SCALE



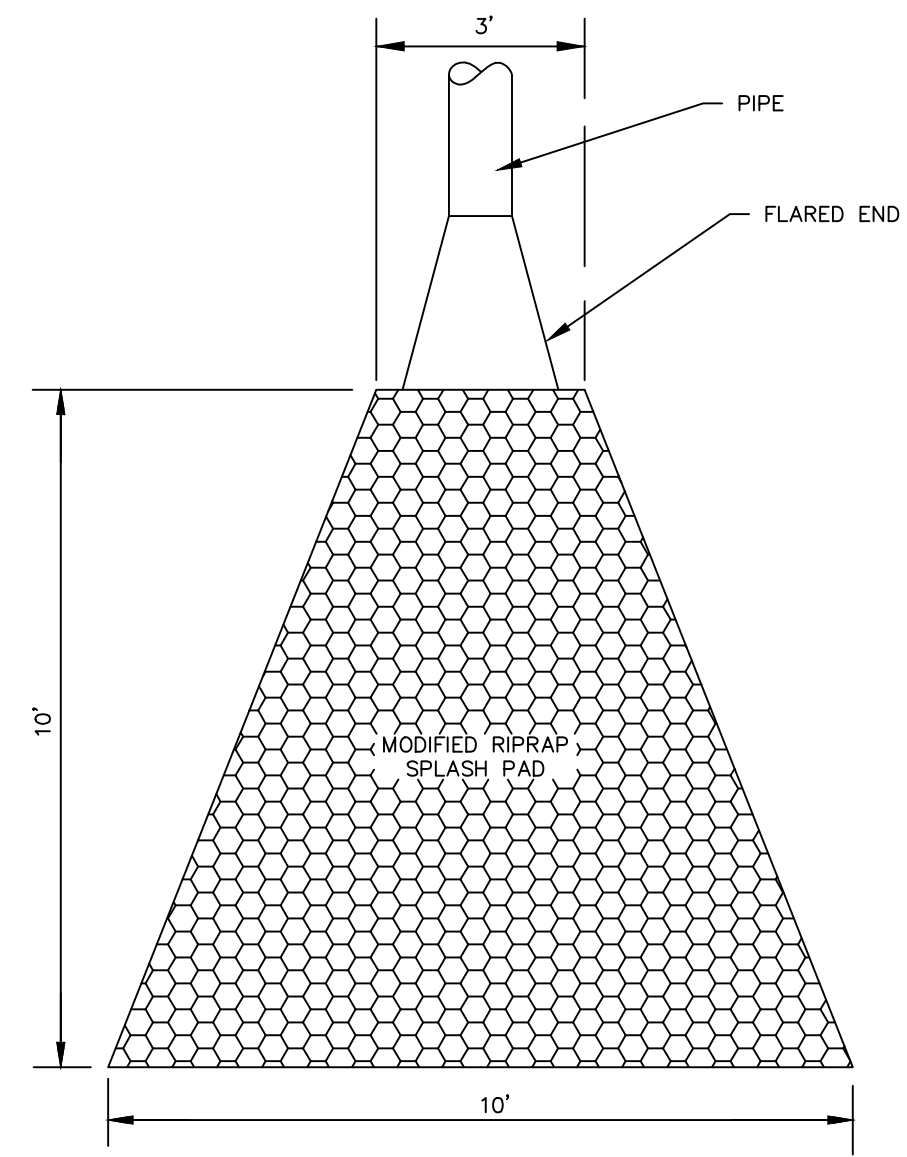
**PAVED APRON DETAIL**  
NOT TO SCALE



**GRAVEL ACCESS DRIVE**  
NOT TO SCALE



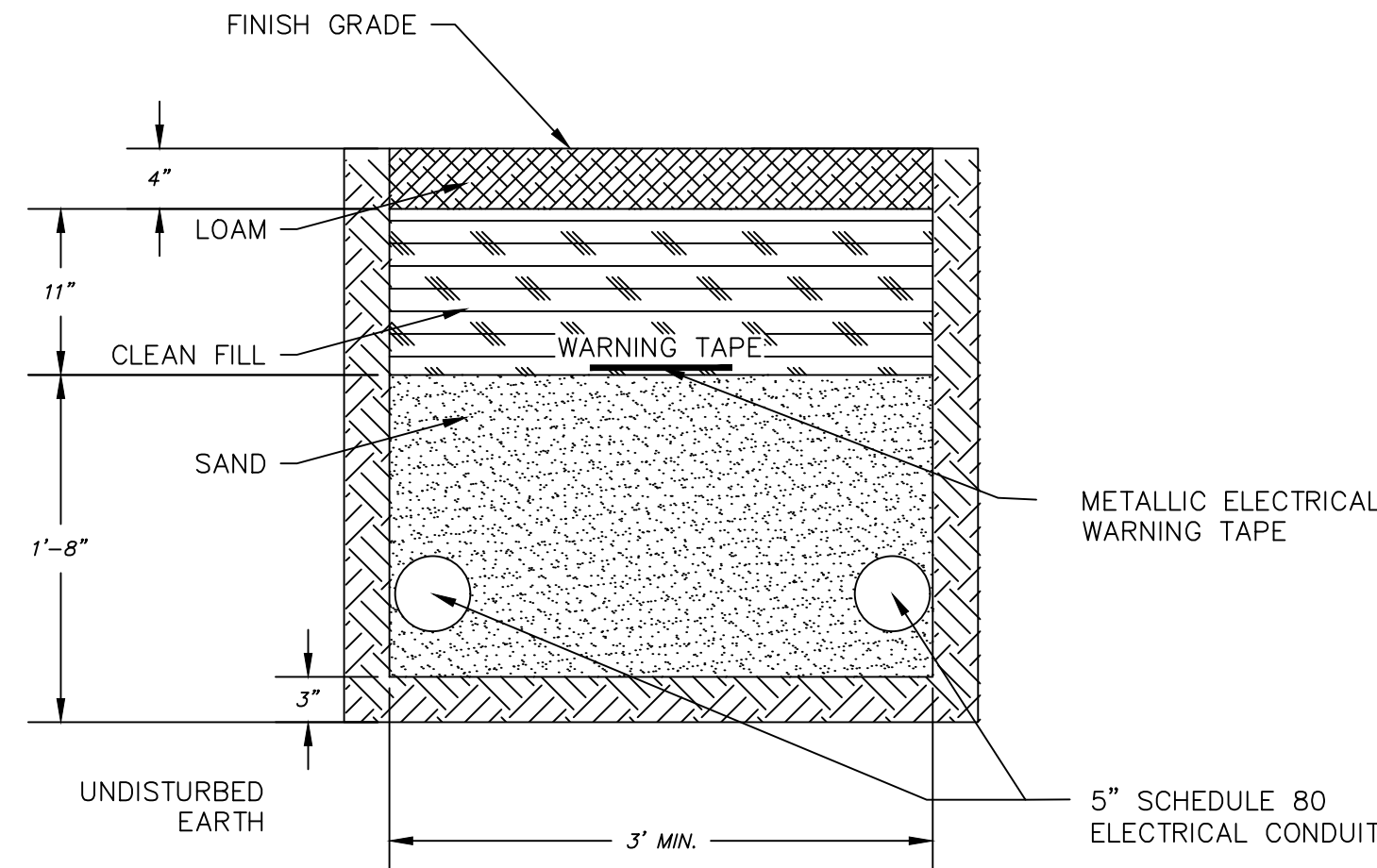
**AIR BRIDGE OVER GAS MAIN**  
NOT TO SCALE



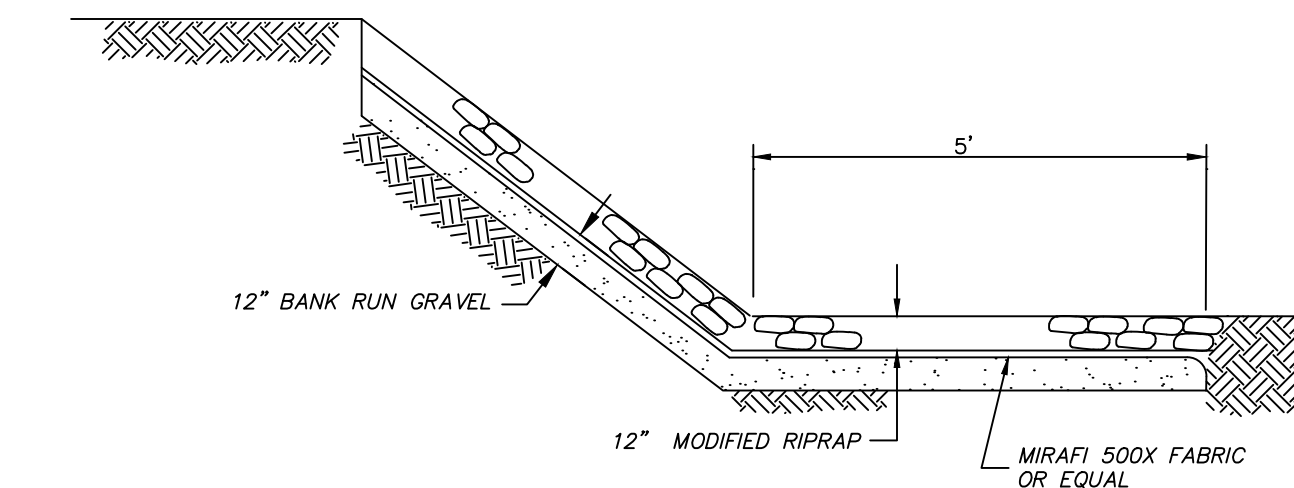
NOTE:  
MODIFIED RIPRAP APRON (12\"/>

**TYPE A RIPRAP APRON (OP)**

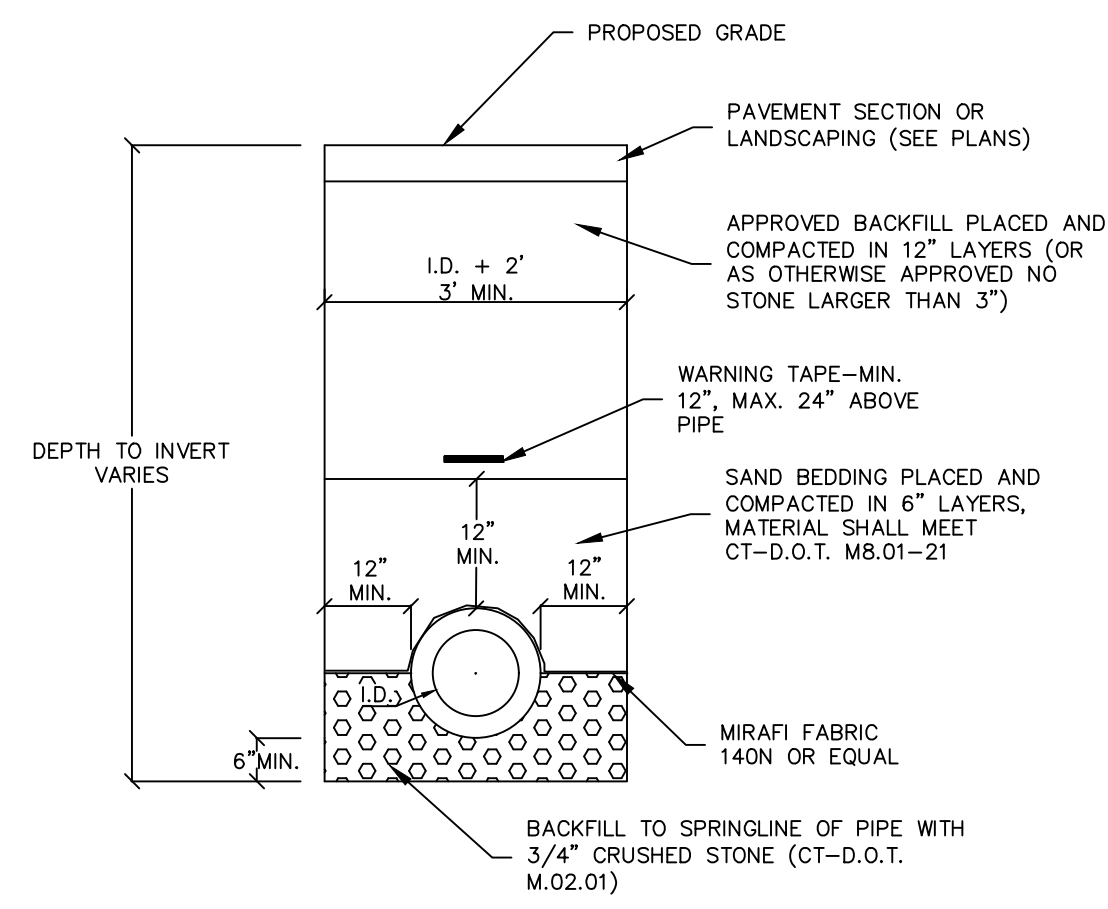
N.T.S.



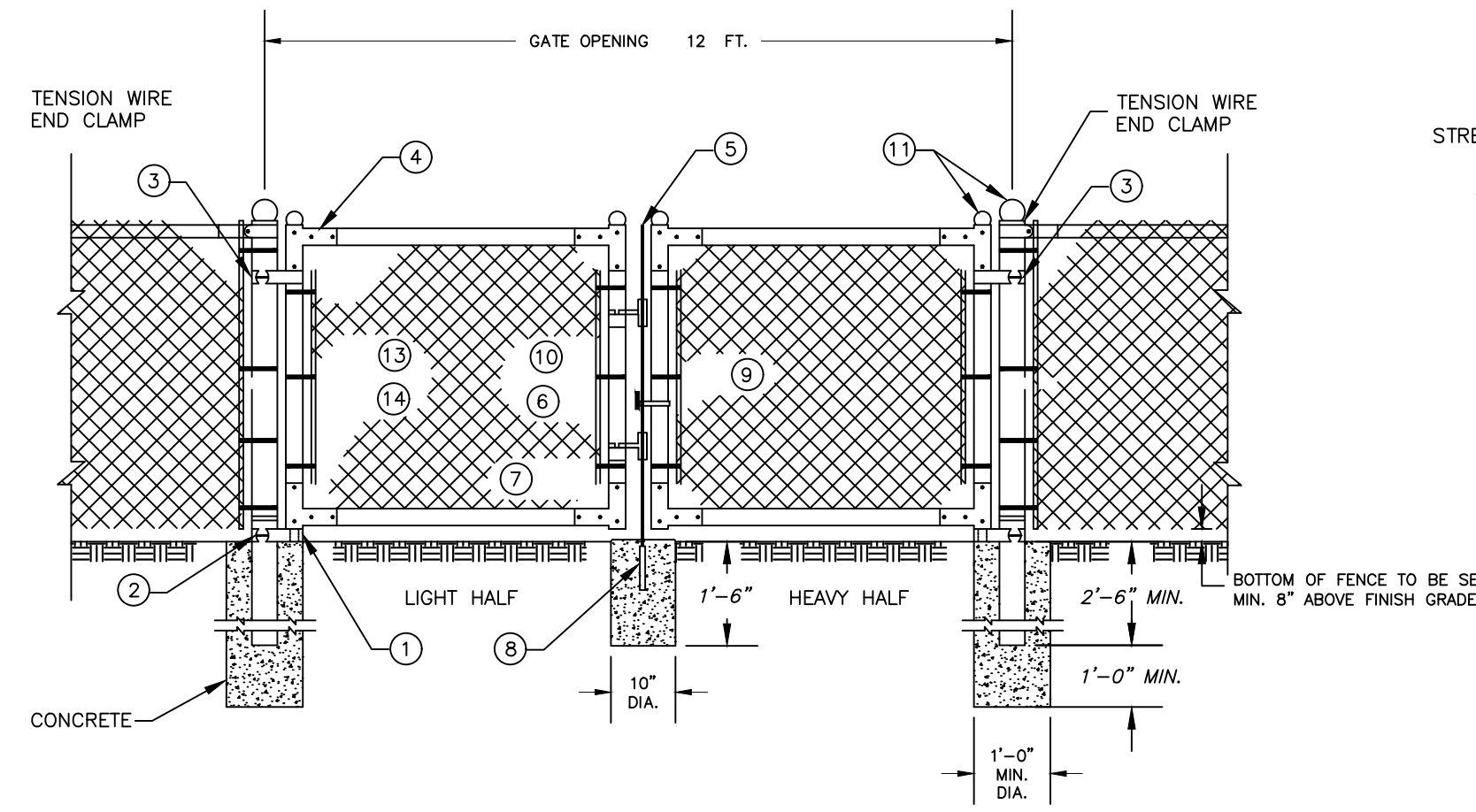
**MEDIUM VOLTAGE CABLE TRENCH DETAIL (MV)**  
NOT TO SCALE



**RIPRAP SLOPE PROTECTION AT SPILLWAY**  
NOT TO SCALE



**STANDARD STORM DRAIN DETAIL**  
NOT TO SCALE

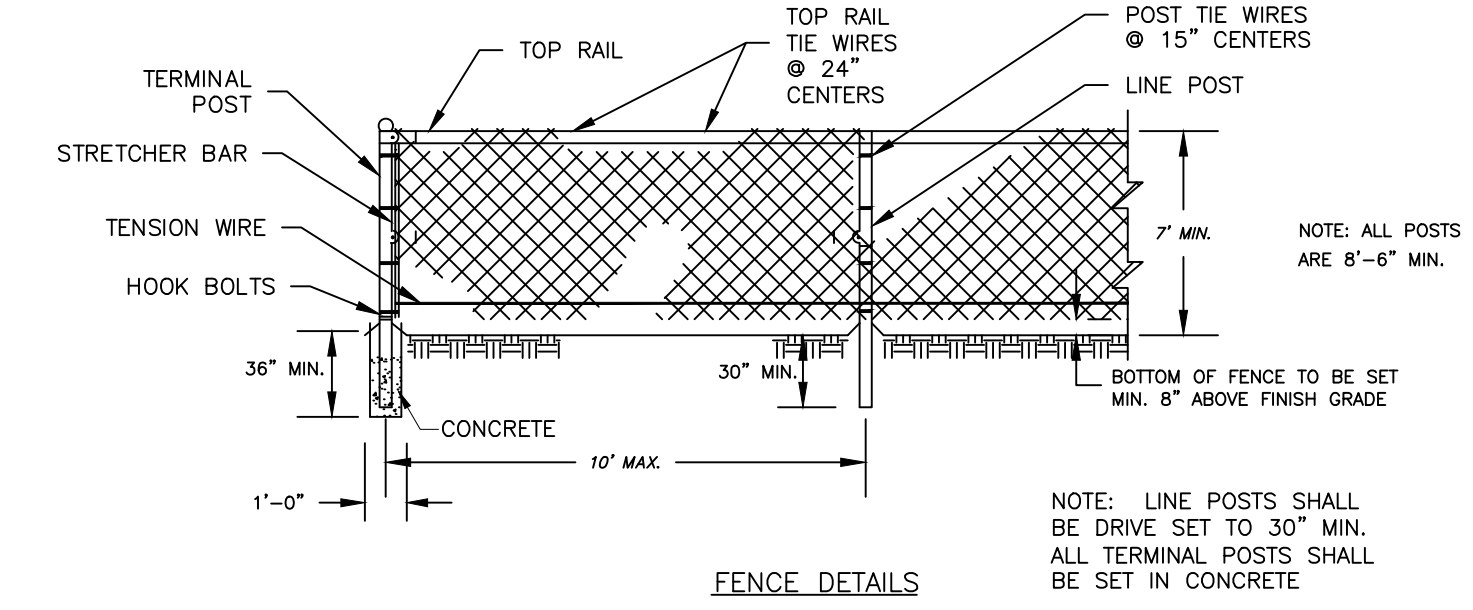


**LEGEND**

PART NO.	DESCRIPTION	QUANTITY
1	STRAIGHT PLUG	2
2	BOTTOM HINGE	2
3	TOP HINGE	2
4	CORNER ELBOW	8
5	PLUNGER ROD	1
6	LATCH FORK	2
7	FORK CATCH	2
8	PLUNGER ROD CATCH	1
9	LOCK KEEPER GUIDE	1
10	LOCK KEEPER	1
11	ORNAMENTAL TOPS	6
12	TRUSS RODS	4
13	STRETCHER BAR	4
14	HOOK BOLTS	12

NOTE:  
THE FENCING SHALL BE #9 GAGE FENCE FABRIC, STANDARD 2-INCH CHAIN LINK DIAMOND MESH.

**CHAIN LINK FENCE DETAIL**  
NOT TO SCALE



**SHAPE, SIZE AND WEIGHT REQUIREMENTS FOR FENCE POSTS AND RAILS**

ITEM	SHAPE	OUTSIDE DIMENSIONS INCHES	WEIGHT LBS./LIN. FT.
**	ROUND	2.375	3.65
TERMINAL POSTS	*ROUND	2.375	3.12
LINE POSTS	*ROUND	1.90	2.72
	*ROUND	1.90	2.28
TOP & BRACE RAILS	*ROUND	1.66	2.27
	*ROUND	1.66	1.84

**GATE FRAME MEMBERS SIZE AND WEIGHT**

GATE FRAME	OUTSIDE DIMENSIONS INCHES	WEIGHT LBS./LIN. FT.
*ROUND	1.66	2.27
*ROUND	1.66	1.84

\* GRADE B HIGH STRENGTH STEEL

**GATE POST SIZE AND WEIGHT**

GATE LEAF WIDTH OF 6 FT. OR LESS	OUTSIDE DIMENSIONS INCHES	WEIGHT LBS./LIN. FT.
*ROUND	2.875	5.79
*ROUND	2.875	4.84

\* GRADE B HIGH STRENGTH STEEL

- CONSTRUCTION NOTES**
- MATERIALS AND WORKMANSHIP NOT SHOWN ON THIS DRAWING SHALL CONFORM TO THE MANUFACTURER'S SPECIFICATIONS.
  - ALL POSTS SHALL BE INSTALLED VERTICALLY. WHERE POSTS ARE INSTALLED ON AN INCLINED SURFACE, THE ANGLE OF THE POST SHALL BE ADJUSTED SO THAT THE POST WILL BE VERTICAL.
  - THE FENCING SHALL BE #9 GAGE FENCE FABRIC, STANDARD 2-INCH CHAIN LINK DIAMOND MESH.

**REVISIONS**

NO.	DATE	DESCRIPTION

BY: LF/TAC CHK: JEU

*Connecticut Green Bank  
Manson Youth Institution*  
42 Jarvis Street  
Cheshire, Connecticut

Details

DATE	4-27-22
SCALE	AS SHOWN
JOB NUMBER	2021-040
SHEET	C-202